



United States

Booklet Panes

SERIES OF 1898

1900

DOUBLE-LINE WATERMARK

PERF. 12



279E

George Washington

AEXXX

Booklet panes were the innovation of Third Assistant Postmaster General C. E. Madden, who presided over the release of the 2c 1898 Washington regular in booklet pane form on April 2, 1900. The panes were printed from special plates that consisted of 360 and later 180 stamps, and were issued in books of two, four, and eight panes.

1907



300B

Benjamin Franklin

EXXXX

SERIES OF

1902-03

Not until March 1907, more than four years after the 1c Franklin design appeared, was this booklet issued. The watermark on these stamps and on all subsequent issues is vertical instead of horizontal as on the sheet stamps.

This booklet was released on January 24, 1903, only a short time after the ordinary stamp variety appeared. The design was current for a brief period, but almost 150 million copies were issued in booklet pane form.

1903



301C

George Washington

OXXXX

MADE IN U.S.A.

5-203

Whitely





US#300b

1903

1c

Blue green

"it is a genuine unused, o.g., previously hinged, booklet pane of six."



131905

EXPERT COMMITTEE

We have examined the enclosed item, of which a photograph is attached, and *described by the applicant* as follows:

Country: UNITED STATES OF AMERICA

Cat. No.	Issue	Denom.	Color
279Be	1900	2¢	red

Scott's unless otherwise specified.

UNUSED OG
BOOKLET PANE OF SIX.

AND WE ARE OF THE OPINION THAT:

IT IS GENUINE, NEVER HINGED. * * * * *



United States

Booklet Panes

MADE IN U.S.A.



SERIES OF
1902-03

1903

This shield type design was more acceptable to the public. The booklet panes were first issued on December 3, 1903, approximately ten months after the first 2c 1902 Series design was released.

3196

George Washington

KEXX



SERIES OF
1908-09

1908

DOUBLE-LINE
WATERMARK
PERF. 12

331A

Benjamin Franklin

MCNEX



332A

George Washington

MCXXX





United States

Booklet Panes



374A Benjamin Franklin NEXX



375A George Washington CKXX

SERIES OF
1910-11
1910

SINGLE-LINE WATERMARK
PERF. 12



405B George Washington HEX



406A George Washington CEXX

ISSUES OF
1912-14
1912





United States

Booklet Panes

ISSUES OF
1914-15

1914

SINGLE-LINE WATERMARK
PERF. 10



424 D George Washington 11X



425 E George Washington 1EX



462A George Washington 1EX



463A George Washington C1EX

SERIES OF
1916-17

1916

UNWATERMARKED
PERF. 10





United States

Booklet Panes

1917



498 E George Washington LE

1917



499 E George Washington MIX

SERIES OF
1917-19

1917



501B I George Washington

1918



OKEY 502B II George Washington CEXX

UNWATERMARKED
PERF. 11



White Ace
33

S-203

MADE IN U. S. A.

9

AMERICAN EXPEDITIONARY FORCES

1918



498F

George Washington

KIEXX

A. E. F. 30 subject booklet panes were prepared principally for the use of Army postal clerks overseas in World War I. Each booklet contained ten panes and being made primarily for Government use no extra charge was made for the book.



United States

Booklet Panes



United States Postlet Pages



✓552

Benjamin Franklin

OKX

1926

Rotary Press Printing — Perf. 10

REGULAR
ISSUE
OF 1922-25

1923

Flat Plate Printing

Perf. 11



✓554C

George Washington

CLE

1927

Rotary Press Printing — Perf. 11 x 10½



✓583A

George Washington

CXX

✓632 A

Benjamin Franklin

OE

✓634 D

George Washington

MXX



White Ace

9-203

MADE IN U. S. A.

8





United States

Booklet Panes

LINDBERGH

1928



C10A

Spirit of St. Louis

LXXX

1932



720B

George Washington

IXXX

Issued to commemorate the first non-stop solo flight by Charles A. Lindbergh from New York to Paris in May of 1927. The booklet pane was first placed on sale May 26, 1928.

PRESIDENTIAL SERIES OF 1938

1939



804B

George Washington

AX



806B

John Adams

MAE



807A

Thomas Jefferson

CEX





United States

Booklet Panes

AIR MAIL

1949



C39A

DC-4 Skymaster

NEX

AIR MAIL

1943



C25A Twin-Motor Mail Transport CLE

LIBERTY SERIES OF 1954-67

1954



1035 A Statue of Liberty

MLE

1958



1036 A Abraham Lincoln

MOX

MADE IN U.S.A.

S-203

Whitefish





United States

Booklet Panes

AIR MAILS

1958



C51A

Jet Aircraft

MMEX

1960



C60A

Jet Aircraft

K1

MADE IN U.S.A.

5-203

WhiteHills





United States

Booklet Panes

1962



C64B I

Jet over Capitol

ELX

REGULAR
AIR MAILS OF
1962-65

1963



C64B II

Jet over Capitol

MKEX

1964



C64B III

Jet over Capitol

MIE





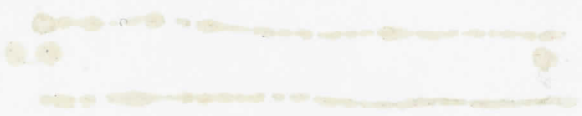
United States

Booklet Pages



C64C

MIE



MADE IN U.S.A.

8-203

Whitcomb





United States

Booklet Panes

1962



ISSUES OF
1962-66

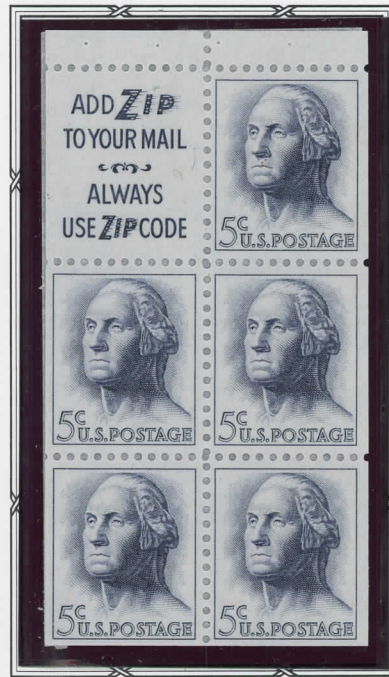
1213A I George Washington

1963



1213A II George Washington

1964



1213A III George Washington



MADE IN U.S.A.

9-203

Whitman



United States

Booklet Panes

MADE IN U.S.A.



1213C II TAGGED OXXX



1213C III TAGGED MEX

13A





United States

Booklet Panes

PROMINENT AMERICAN SERIES

1968



1278A

Thomas Jefferson

A

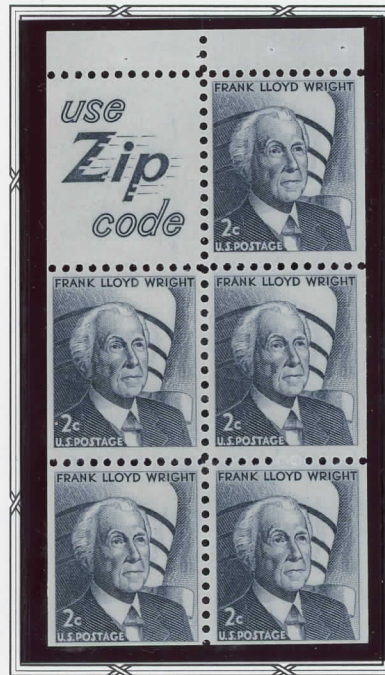
1968

1968



1280A IV Frank Lloyd Wright

MX



1280A V Frank Lloyd Wright

AX

MADE IN U.S.A.

9-203

Whitcomb





United States

Booklet Panes



1280C

SHINY GUM

M1



14A

1280C WRIGHT M1
DULL GUM

MADE IN U.S.A.

9-203

Whitcomb





United States

Booklet Panes

PROMINENT AMERICAN SERIES

1968



1284c IV

Franklin D. Roosevelt

AE

1967



1284B

Franklin D. Roosevelt

KA

1968



1284c V

Franklin D. Roosevelt

LE

MADE IN U.S.A.

EO3-5

Whitcomb



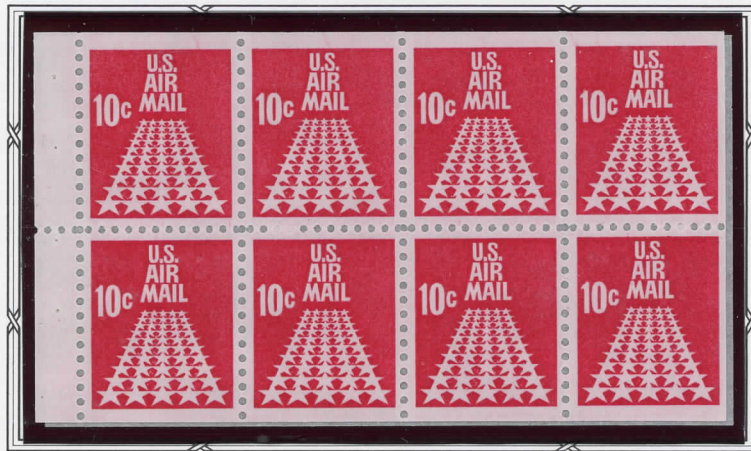


United States

Booklet Panes

AIR MAILS

1968



C72B

Runway of Stars

AX

1968



C72C IV

Runway of Stars

EX

1968



C72C V

Runway of Stars

EX

MADE IN U.S.A.

9-203

Walt Disney





United States *Booklet Panes*

EISENHOWER ISSUES

1970

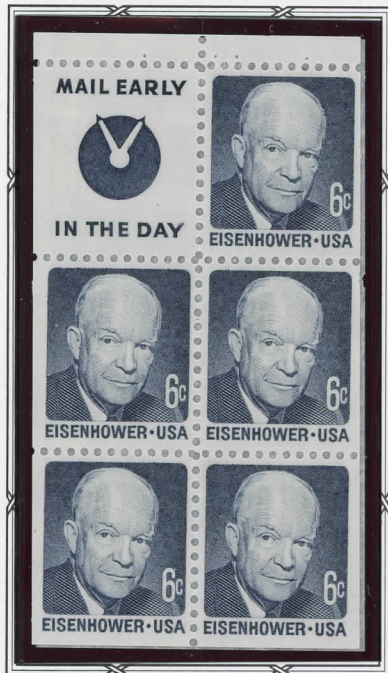


1393A

Dwight D. Eisenhower

KA

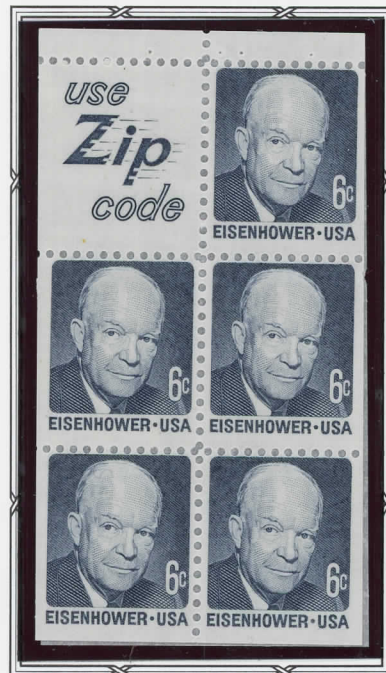
1970



1393B *IV* *Dwight D. Eisenhower*

CX

1970



1393B *V* *Dwight D. Eisenhower*

CX

MADE IN U.S.A.

9-203

Whitely's





United States

Booklet Panes



1278A

TEST GUM

A



1393A

TEST GUM

KA

MADE IN U.S.A.

9-203

Whitely's

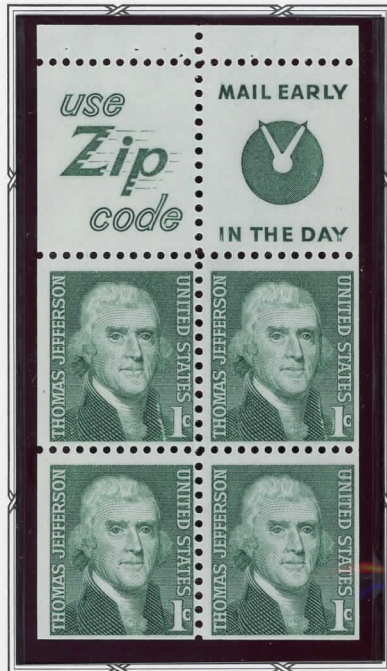




United States

Booklet Panes

REGULAR
ISSUES OF
1971



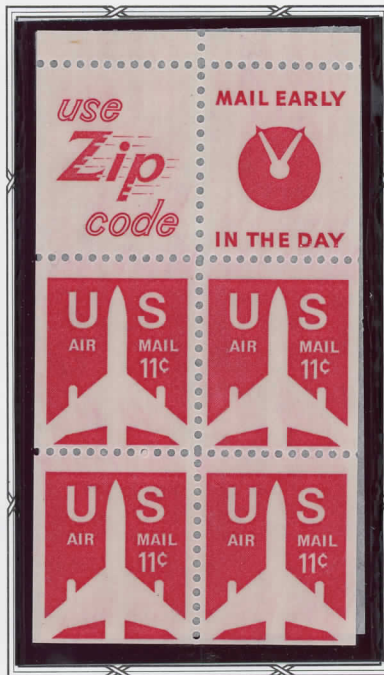
1278 B Thomas Jefferson K



1280 C Frank Lloyd Wright M1



1395 B Dwight D. Eisenhower KA



C78 A Jet Airliner Silhouette KK

The one-cent Jefferson pane of four was used in booklets of two Eisenhower panes of six to make a \$1.00 booklet in vending machines. The two-cent Frank Lloyd Wright booklet of six appeared in a \$1.00 booklet of two panes of 4 - 11c air mail stamps.





United States

Booklet Panes

EISENHOWER ISSUES

1971

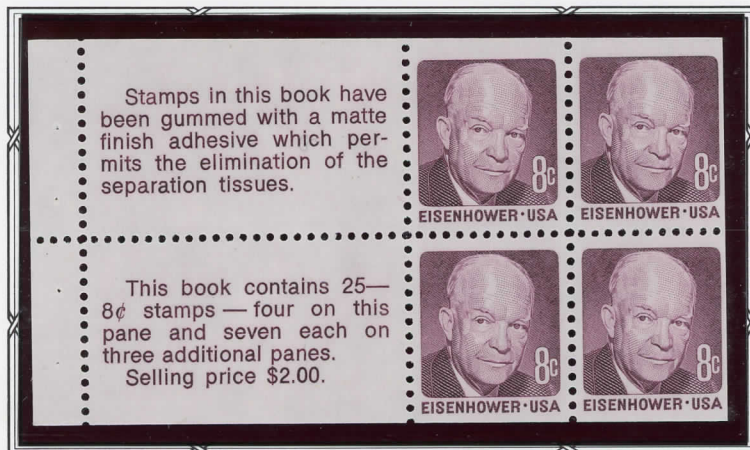


1395 A

Dwight D. Eisenhower

OK

1972



1395 C

VI VII

Dwight D. Eisenhower

CI





United States

Booklet Panes

MADE IN U.S.A.

Stamps in this book have been gummed with a matte finish adhesive which permits the elimination of the separation tissues.

This book contains 25—8¢ stamps—four on this pane and seven each on three additional panes. Selling price \$2.00.

EISENHOWER · USA EISENHOWER · USA
EISENHOWER · USA EISENHOWER · USA

1395C VI VII

MXX

9-203

Stamps in this book have been gummed with a matte finish adhesive which permits the elimination of the separation tissues.

This book contains 25—8¢ stamps—four on this pane and seven each on three additional panes. Selling price \$2.00.

EISENHOWER · USA EISENHOWER · USA
EISENHOWER · USA EISENHOWER · USA

1395C VI VII

MXX

19A





United States

Booklet Panes



1395 D IV

MEX



1395 D IV

MEX

20A



MADE IN U.S.A.

9-203

Whitcomb



United States

Booklet Panes



1395D ∇

MEX



1395D ∇

MEX

MADE IN U.S.A.

9-203

Whitcomb

2073





United States

Booklet Panes

EISENHOWER ISSUES

1972



1395 D IV

Dwight D. Eisenhower

E0

1972



1395 D V

Dwight D. Eisenhower

E0

A booklet consisting of 25 eight-cent stamps and selling for \$2.00 was issued January 28, 1972. The panes were assembled without interleaves and gummed with humidity resisting adhesive. The first pane in each booklet consists of four stamps and two printed blanks. Three other panes contain seven stamps and one blank. The booklet cover was completely redesigned and printed in brown on buff stock.





United States

Booklet Panes

RATE CHANGE ISSUES

1973



1510C

Jefferson Memorial

AX

1973

1973



1510B

Jefferson Memorial

EX



C79A VIII

Envelope in Flight

OE

In anticipation of the increase in the first class postal rate to 10c, the design depicting the Jefferson Memorial was issued on December 14. The inscription across the top, "We Hold These Truths . . ." is from the Declaration of Independence which Jefferson authored. The 13c airmail design, issued to provide for the new domestic airmail rate, was released in booklet format on December 27 in Chicago. New with these issues is the label bearing the "Use Postal Money Orders" slogan.





United States

Booklet Panes

1974



1510D Jefferson Memorial DX

1975



1595B Liberty Bell NM

1975



1595A Liberty Bell LA

1975



1595C Liberty Bell MXK

The Jefferson Memorial pane of six was issued on August 5, 1974 at Oakland, California. The 13c panes depicting the Liberty Bell were issued on October 31, 1975 at Cleveland, Ohio. The release of the latter three panes was in anticipation of an increase in the basic first class mail rate from 10c to 13c late in 1975.

MADE IN U.S.A.

9-203

Whitcomb





United States

Booklet Panes



1595 C

MXK



1595 B

NM

MADE IN U.S.A.

9-203

Whitcomb





United States

Booklet Panes



1595C

MXK



1595B

NM

MADE IN U.S.A.

9-203

Whitcomb





United States

Booklet Panes

LIBERTY BELL

1976

Liberty Bell

PERF. 10



This pane of five 13c Liberty Bell stamps was designed for use in vending machines in self-service postal units. Two of these panes were combined in a booklet selling for \$1.30. The Liberty Bell stamp was originally issued in three booklet formats in November, 1975, as part of the Americana Series of regulars.

PERF. 11 x 10 1/2

\$1.00 BOOKLET PANE

1977

This pane was issued March 11, 1977; it was contained in a booklet designed for use in vending machines which will not accept more than \$1.00. The 13c stamp, a new design for the booklet, was created by Esther Porter of the Bureau of Engraving and Printing. Printing was done on the intaglio press.

Flag & Capitol

Flag & Capitol





United States

Booklet Pages

OLIVER
WENDELL
HOLMES

1978



Oliver Wendell Holmes

This booklet version of the Oliver Wendell Holmes regular was issued on June 14, 1978, at Boston, Massachusetts, Holmes' birthplace. The design of the stamp is the same as that for the sheet version issued in 1968 as a part of the Prominent American Series.

"A" STAMP

1978



Each booklet of these "A" stamps — issued May 22, 1978 — contains three pages of eight stamps each. Since the stamps had been assigned a 15c value — the one ounce first class domestic mail rate — the booklet sold for \$3.60. The stamps were produced by the Intaglio Printing Process.



United States

Booklet Panes



1736

MIX



1736

MIX



MADE IN U.S.A.

8-203

Whitman



United States *Booklet Pages*

FORT MCHENRY FLAG 1978



Fort McHenry Flag

This booklet version of the Fort McHenry Flag regular was issued on June 30, 1978, at Baltimore, Maryland; the stamp was printed by the intaglio method. The booklet, for use in vending machines, contains one pane of eight stamps. V. Jack Ruther designed the stamp.

ROSES 1978



Roses

Issued in booklet format, this stamp was released on July 11, 1978, at Shreveport, Louisiana. It depicts a Red Masterpiece, the 1974 Rose of the Year, and the Medallion, an apricot rose that in 1973 won two of the highest honors in Roseodrom. Mary Faulconer designed the stamp.





United States

Booklet Panes



MADE IN U.S.A.

9-203

Whitcomb



United States

Booklet Panes

MADE IN U.S.A.

"B" STAMP

1981



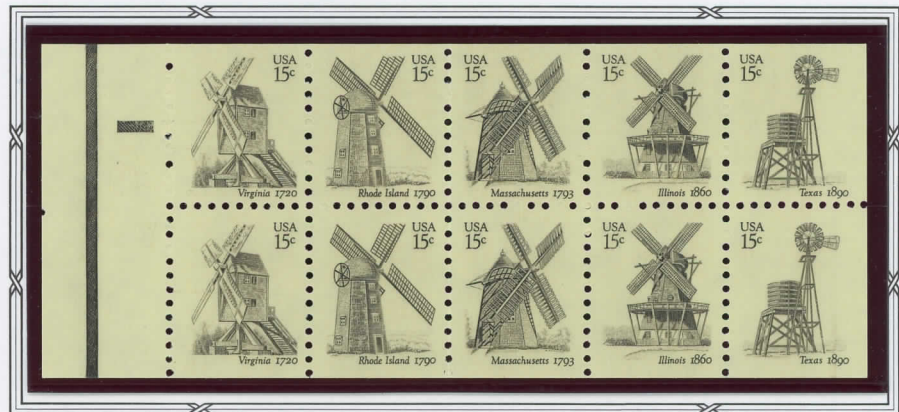
Eagle

This booklet pane with nondenominated "B" stamps was placed on sale on March 15, 1981, as a contingency item to assure ample supplies of postage to customers until 18c denominated booklets could be issued. The basic first class domestic postage rate went to 18c on March 22, 1981.

WINDMILLS

1981

Windmills that are part of America's past are shown on this booklet pane, which was issued on February 7, 1980. Two of these panes of diminutive stamps were in each of the \$3.00 booklets, issued for over-the-counter sale. Ronald C. Sharpe designed the five different stamps.



Historic American Windmills

Whitely's





United States

Booklet Panes



AMERICAN FLAG

1981

This booklet pane, with stamps designed by Peter Cocci, was issued April 24, 1981. The 18c denomination features a pictorial representation of a phrase from the song "America the Beautiful." The stars on the 6c stamp symbolize the original thirteen American colonies.

1279-1280

Flag & Mountains



"C" STAMP

1981

This pane of diminutive "C" stamps was included in a booklet of two panes that sold over-the-counter for \$4.00. The nondenominated stamp was issued on October 11, 1981, to meet the need for higher rate postage stamps when the first class rate was raised November 1, 1981.

Eagle





United States

Booklet Panes

WILDLIFE

1981



1820-1829 *American Wildlife*

This booklet pane, featuring ten different stamps showing American wildlife, was issued May 14, 1981. Jim Brandenburg designed the stamps. Two such panes were included in each booklet, which sold over-the-counter for \$3.60. The stamp size, smaller than standard, is .57 x .72 inch.

AMERICAN FLAG

1981



1896A *Flag & Supreme Court*

Dean Ellis designed this 20c Flag regular stamp. The booklet pane is included in a booklet selling for \$1.20 and intended for vending machine sale. It was printed by the intaglio process at the Bureau of Engraving and Printing in Washington, D.C.

MADE IN U.S.A.

9-203

Wildlife





United States

Booklet Panes

AMERICAN FLAG

1982

BIGHORNED SHEEP

1982



1949

Bighorned Sheep

The design of this booklet stamp, which was issued January 8, 1982, features the bighorned sheep depicted in the 1981 wildlife stamps booklet. The stamp was engraved from a photograph by Jim Brandenburg. It was produced on pre-gummed paper on the single-color intaglio press.



1896 B

Flag & Supreme Court

A \$2.00 booklet of stamps intended for use in vending machines was placed into use on June 1, 1982. The design of the stamps in the booklet is the same as that of the Flag Over the Supreme Court stamps issued in sheet, booklet, and coil form December 17, 1981.

