

Issue of 1916

The Bureau introduced unwatermarked paper, still using the bicycle design, perforated 10.



Sideographer, Samuel S. Ludlum



Roller break is progressive under right '10'
Discovery copies

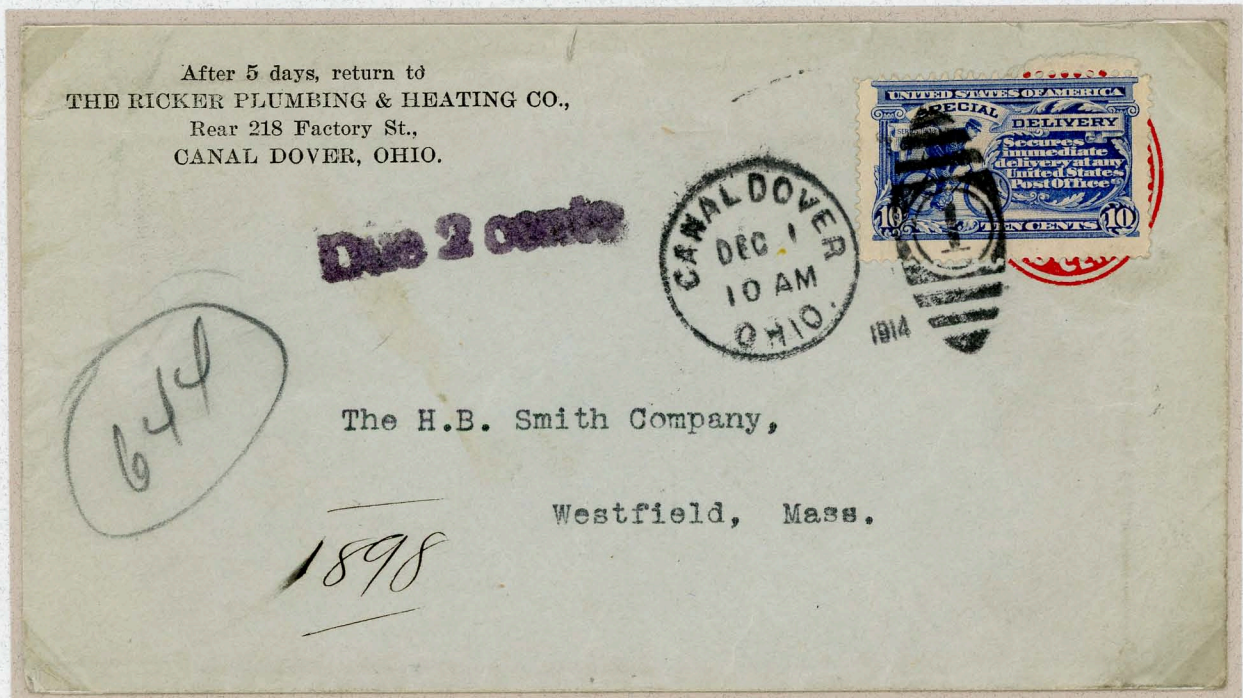


No specific rate known

First Class Postage Unpaid

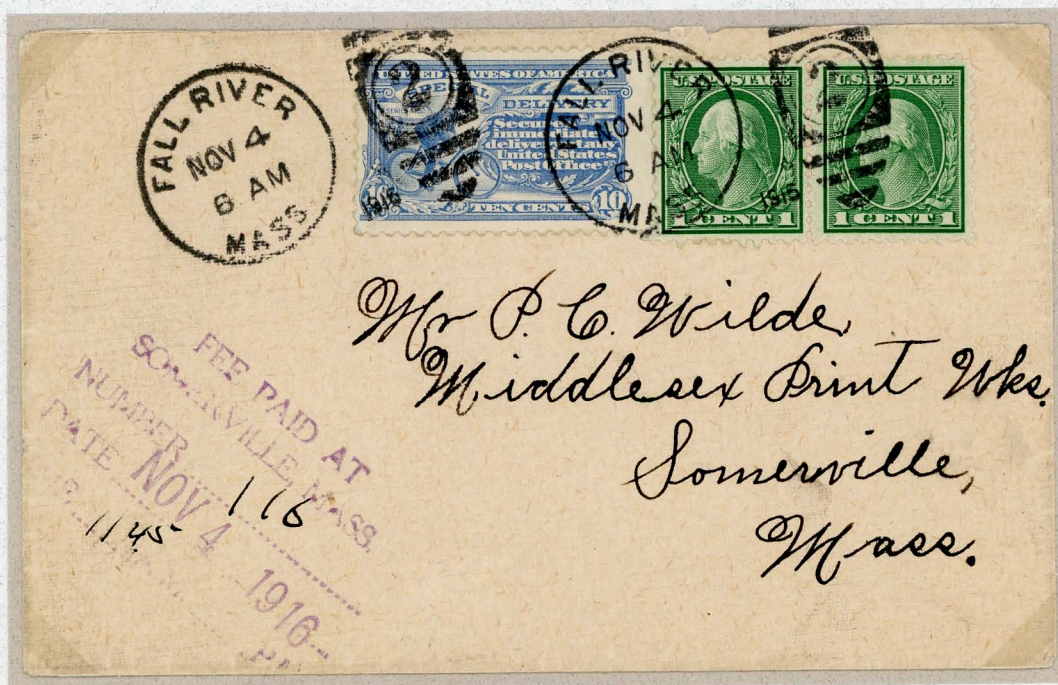


East Liverpool, to Lisbon, Oh., November 15, 1915
Marked 'Postage Due 2 cents'



Special Delivery stamp applied over postal stationery two cent indicia mistakenly marked 'Due 2 cents' without indication of two cents collected

Domestic Service



Fee paid carrier marking

Official Mail Service



Penalty imprint paid first class postage, Special Delivery fee paid by stamp