

# U.S. AIRMAIL SPECIAL DELIVERY

## Combination Service Issues of 1934 and 1935

The first combination airmail special delivery stamp (6¢ airmail and 10¢ special delivery) which properly so states was conceived by then U.S. President Franklin D. Roosevelt, a stamp collector, who used the design of the Great Seal of the United States as the basis of the stamp design.

The stamp issue was prepared in horizontal format in the traditional blue color for special delivery. It was issued for the APS convention in August of 1934 and was widely used. Few uses to foreign countries have been found and even fewer located which originated abroad.

When the uproar over the limited edition imperforate national park series stamps surrounded James A. Farley, both a political power and the Postmaster General of the United States, the special delivery airmail stamp was included in the issue known as Farley's Follies of March 15, 1935. The sheet of 200 stamps was issued in that form to collectors so that four arrow blocks, and a center-line block are available to exhibit. Commercial postal usages of the imperforates was rare and proper in period of use covers are very difficult to find.

The Farleys provided easy money for special delivery messengers. They teamed up with stamp dealers seeking to satisfy their greed and the collector's need by obtaining canceled to order plate blocks. How was this accomplished?

Dealers would have special delivery messengers, who were paid eight cents of the ten cent stamps' face value for delivering letters, buy the special delivery stamps at the post office, affix a plate block to six "special delivery envelopes", have them favor canceled, give the envelopes numbers, and deliver the letters to dealers who probably were standing in the post office lobby.

A regulation prevented the payment of special delivery fees to messengers if letters were addressed to General Delivery, so another scheme had to be arranged. Probably splitting the 48¢ fee the messenger received from the six letters was the way dealers profited on the buy side of the scheme, and then they probably charged a premium on the sale side. Illustrated in the exhibit is a matched set of these favor canceled plate blocks of the 1934 perforate issue. An imperforate favor plate block is also shown.

### SPECIAL-DELIVERY AIR-MAIL POSTAGE STAMP

THIRD ASSISTANT POSTMASTER GENERAL,  
*Washington, August 17, 1934.*

Postmasters and employees of the Postal Service are notified that the Department is preparing to issue a special postage stamp in the 16-cent denomination for use on air mail matter in which provision is also made for special delivery.

The new stamp is  $\frac{84}{100}$  by  $\frac{144}{100}$  inches in dimensions and is arranged horizontally. The stamp is enclosed in a narrow double line border and is printed in blue ink. The central subject is a reproduction of the Great Seal of the United States of America. Across the top of the stamp are the words "Special Delivery" in white roman lettering. On the sides of the stamp, arranged vertically, in white gothic are the words "U.S. Postage" at the left, and "Air Mail" at the right. Along the bottom of the stamp below the central design is the word "Cents" in white roman, on either side of which is the denomination designation "16."

The 16-cent special-delivery air-mail stamp will be first offered for sale at the American Air Mail Society Convention Station, Chicago, Ill., on August 30, 1934.

Collectors desiring first-day cancellations of the 16-cent special-delivery air-mail stamp on that date may send addressed covers, *not to exceed ten (10)*, to the Postmaster, Chicago, Ill., with a cash or postal money order remittance payable to the postmaster to cover the value of the stamps required for affixing. Personal checks and postage stamps will *positively not be accepted in payment*. Covers will be accepted from individual subscribers only and shall be addressed legibly with ample space left for the placing of the stamps. Compliance cannot be made with unusual requests such as the affixing of plate number blocks, etc.

Requests for a supply of uncanceled stamps of this issue must not be included with orders for first-day covers. Stamps needed for mailing purposes should be purchased at the local post office, while stamps of selected quality for collection use should be secured on mail order to the Philatelic Agency.

The 16-cent special-delivery air-mail stamp will be placed on sale at the post office, Washington, D.C., and the Philatelic Agency on August 31, and at other post offices as needed for mailing use, beginning September 1 or as soon thereafter as production will permit.

Collectors desiring covers with the Washington, D.C., cancellation on August 31 may send a limited number of addressed covers to the postmaster under the rules specified herein.

Postmasters at direct- and central-accounting post offices having public demand therefor may submit requisition to the Department for a limited quantity not to exceed a 2 months' estimated supply of 16-cent special-delivery air-mail stamps on form 3201. Postmasters at district post offices will obtain needed stocks of this stamp by requisition on the central-accounting post office.

C. B. EILENBERGER,  
*Third Assistant Postmaster General.*

70782°. (Ed. 20,000.)

U. S. GOVERNMENT PRINTING OFFICE: 1934

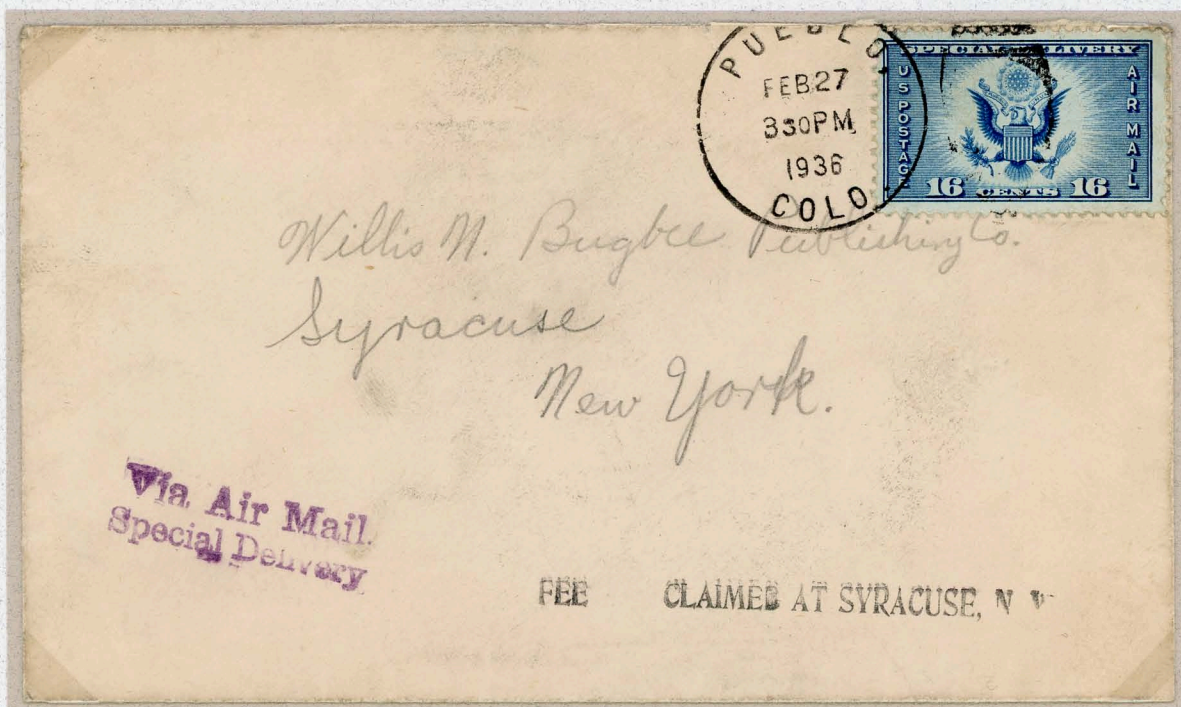


## Issue of August 30, 1934

This issue formally acknowledged combined airmail Special Delivery service in one design.



Small die proof  
dark blue on wove paper



Special single line fee claimed handstamp for Syracuse, N.Y.



Favor Cancel



Matched plate number blocks



# Plates for 1935 Issue

F 21312



F 21313



F 21314



F 21315



Plate numbers 21312 through 21315 were reused for imperforate issue



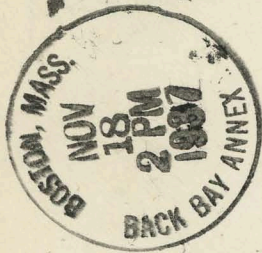
Domestic Service

If not delivered in FIVE DAYS, return to

P. O. BOX 111

BACK BAY POST OFFICE

BOSTON, - - MASS.



Mr. Erskine P. Noyes  
Director of Personnel  
Central Maine Power Company  
Augusta, Maine

AIR MAIL

SPECIAL DELIVERY



## Domestic Service



Envelope for Special Delivery approved by Post Office

## Ship Origin



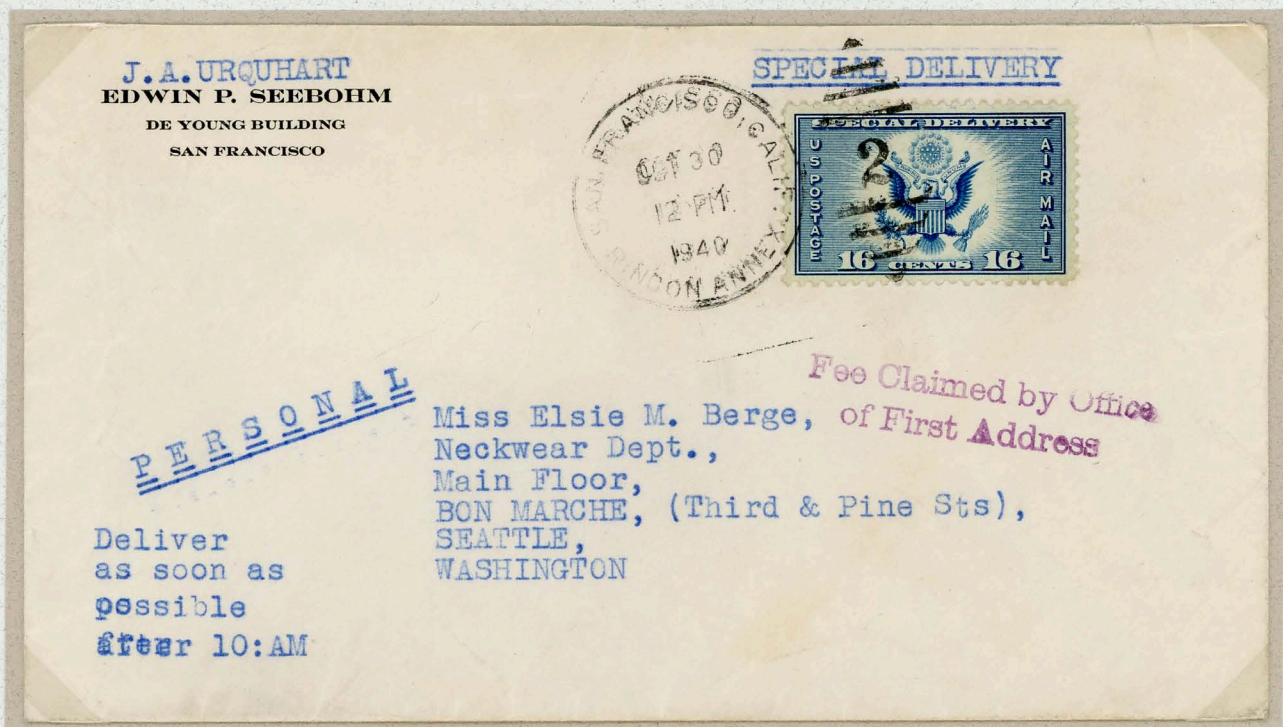
Receiving backstamp New York, N.Y., November 13, 1935



# Domestic Service



Confirmation handstamp 'Special Delivery Fee Paid 10 Cents'



Typed instructions for requested delivery



## Territorial Origin



Mailed Christmas Day, December 25, 1936, Leone, Tutuila, Samoa



Blain & Seat R.P.O., March 24, 1937  
Chicago Airmail Field (Tour 1), Ill., March 26, 1937, 5 A.M.  
Newark, N.J. March 26, 1937, 12 P.M.  
Weehawken, N.J., March 26, 1937, 1:55 P.M.  
Kingston, N.Y., March 26, 1937, 8 P.M.



Foreign Origin  
U.S. Offices Abroad



Receiving backstamp Detroit, Mi., March 18, 1935  
No indication Special Delivery service was provided



U.S. Marine Corps. 4th Regiment, Shanghai, China, December 13, 1936 to Philadelphia, Pa.  
Receiving backstamp Philadelphia, Pa., January 11, 1937, 9 P.M.



AIR MAIL

1363  
2245

MISS AMURI JOHNSON,  
2736 WEST 49<sup>TH</sup> AVE.,  
VANCOUVER,  
B. C.

LOS ANGELES  
MAR 22  
6 PM  
1935  
CALIF.

AIR MAIL  
SAVES TIME

SPECIAL DELIVERY  
U.S. POSTAGE  
16 CENTS 16  
AIR MAIL

What is  
postal delivery

VANCOUVER  
B.C.  
MAR 23  
1935

AFTER FIVE DAYS RETURN TO  
 VIA AIR MAIL  
 SPECIAL DELIVERY  
 AIR MAIL  
 SAVING TIME  
 1936  
 4 PM  
 FEB 20  
 20  
 22<sup>30</sup>/<sub>6</sub>  
 Phone a m will do  
 Mr. Brien Horne  
 626 - 13<sup>th</sup> Ave W  
 Calgary  
 Alberta  
 Canada  
 Please inform your correspondent  
 the Special Delivery fee on letters  
 in Canada is twenty cents.  
 POSTAGE DUE  
 5

Postage due assessed for remainder of 20¢ Special Delivery fee in Canada



## Foreign Destination



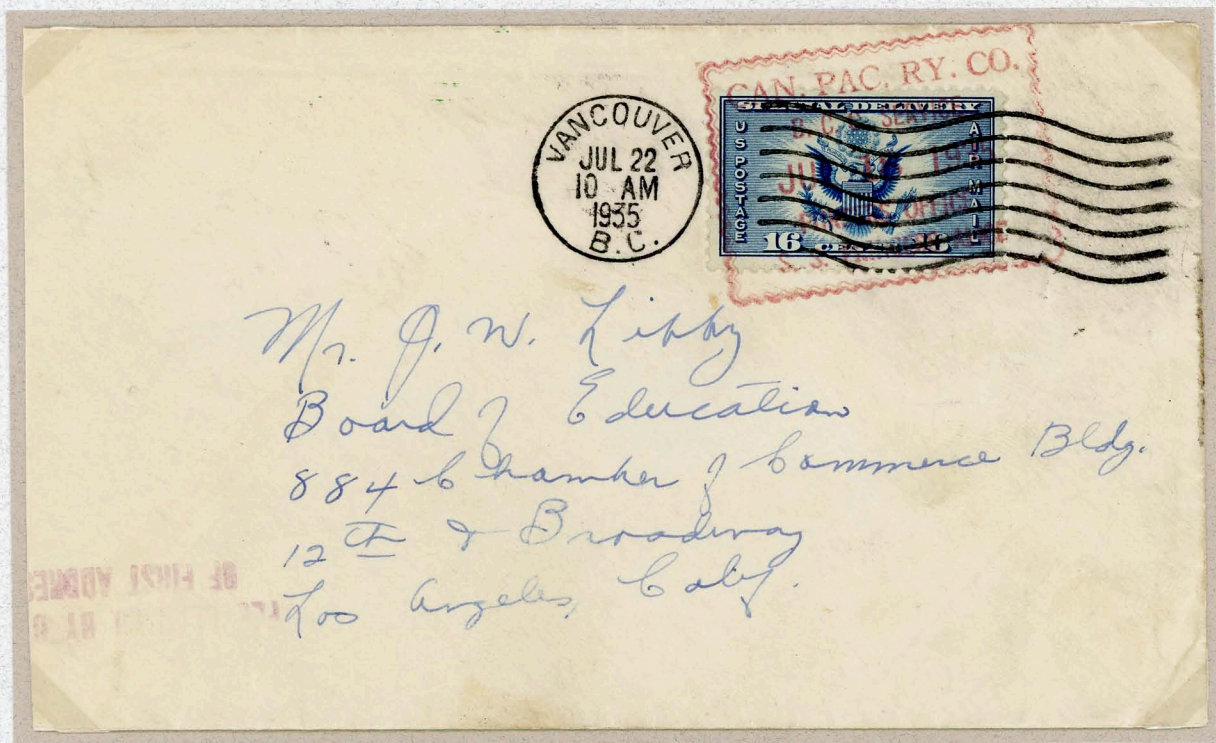
Handstamp 'Not in Special Delivery Mail, Post Office New York, U.S.A.'  
Service not provided in Switzerland



English handstamp acknowledging Special Delivery (Express) fee paid as 6 pence



## Foreign Origin



Mailed from Canadian Pacific Railway Company, July 18, 1935  
via Vancouver, British Columbia, Canada to Los Angeles, Ca., July 22, 1935  
Receiving backstamp Los Angeles, Ca., July 24, 1935



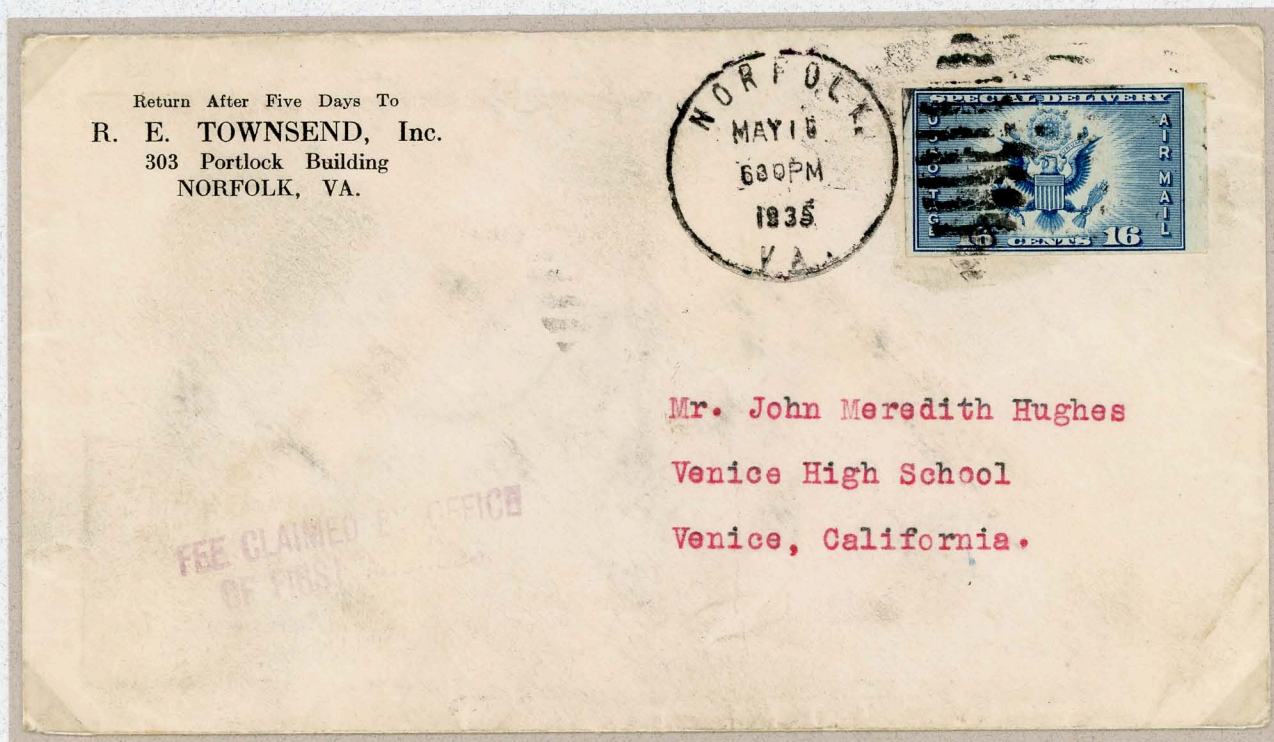
Mailed via Charleston, S.C., February 27, 1936  
Receiving backstamp Worcester, Ma., February 29, 1936



## Domestic Service



First Day of Issue usage, March 15, 1935



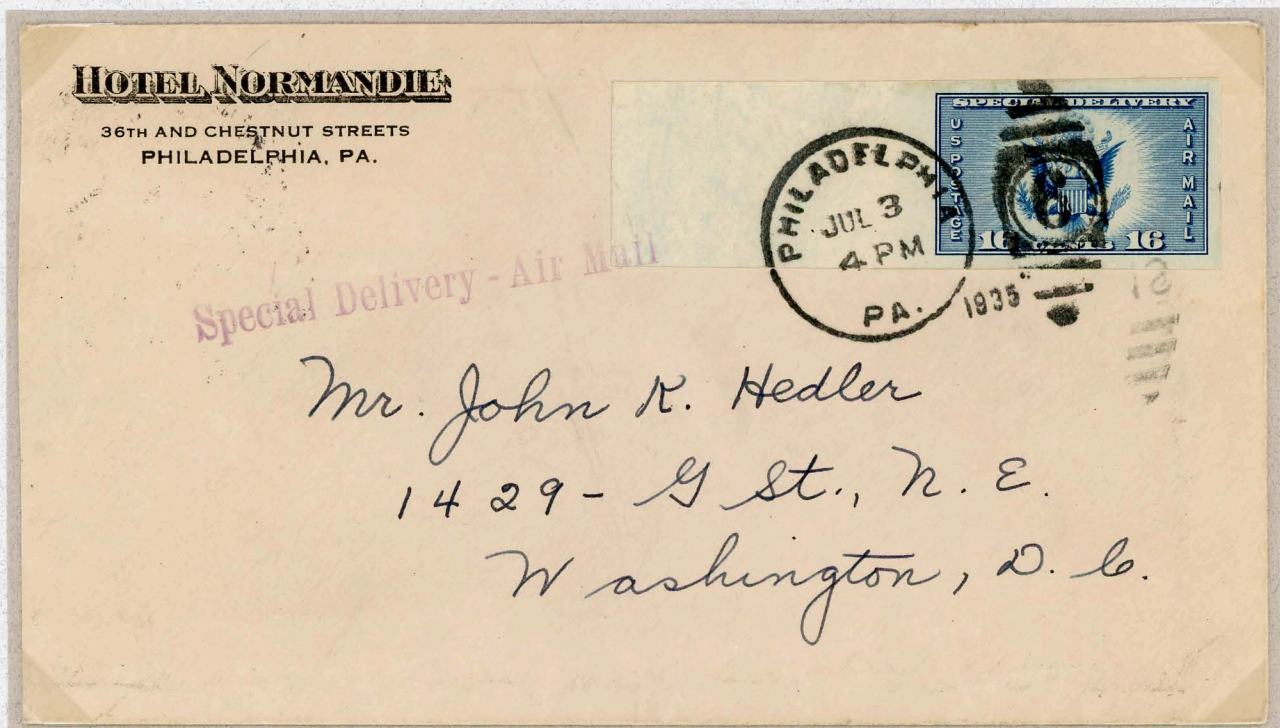
Backstamped Air Mail Field, Kansas City, Mo., May 17, 1935



## Domestic Service



Special Cincinnati, Ohio fee claimed marking



Special Delivery - Air Mail combination service marking



## Unusual Destination



"Passenger eastbound, Overland Limited, due 7:40 P.M. Sunday, June 26, Car 90, Lower 6"

## Foreign Destination

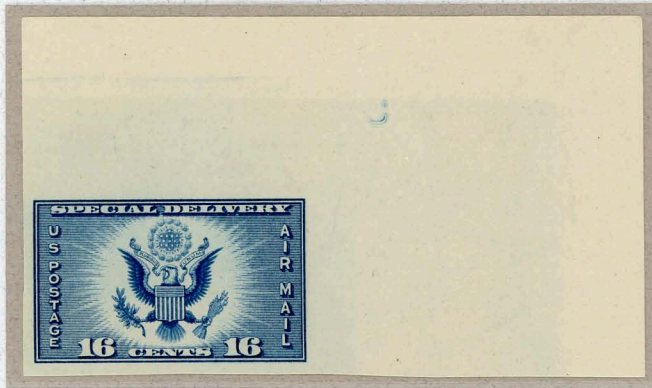


Rochester, N.Y. to Dresden, Germany, July 15, 1935  
via Airmail to the S.S. Europa sailing for Southampton  
via Catapult flight ship to shore, July 21, 1935  
Receiving backstamp Dresden TA, July 22, 1935



## Issue of March 15, 1935

The basic airmail special Delivery stamp design was utilized to print the Farley issues.



Note imprinted 'C' for chrome steel

Special Printing  
Produced imperforate and ungummed

*"Issued for a limited time in full sheets as printed, and in blocks thereof, to meet the requirements of collectors and others who may be interested."*

- From Postal Bulletin No. 16614



Printing plate incorrectly wiped



Preprinting paper fold



Favor canceled block