



TLALPUJAHUA



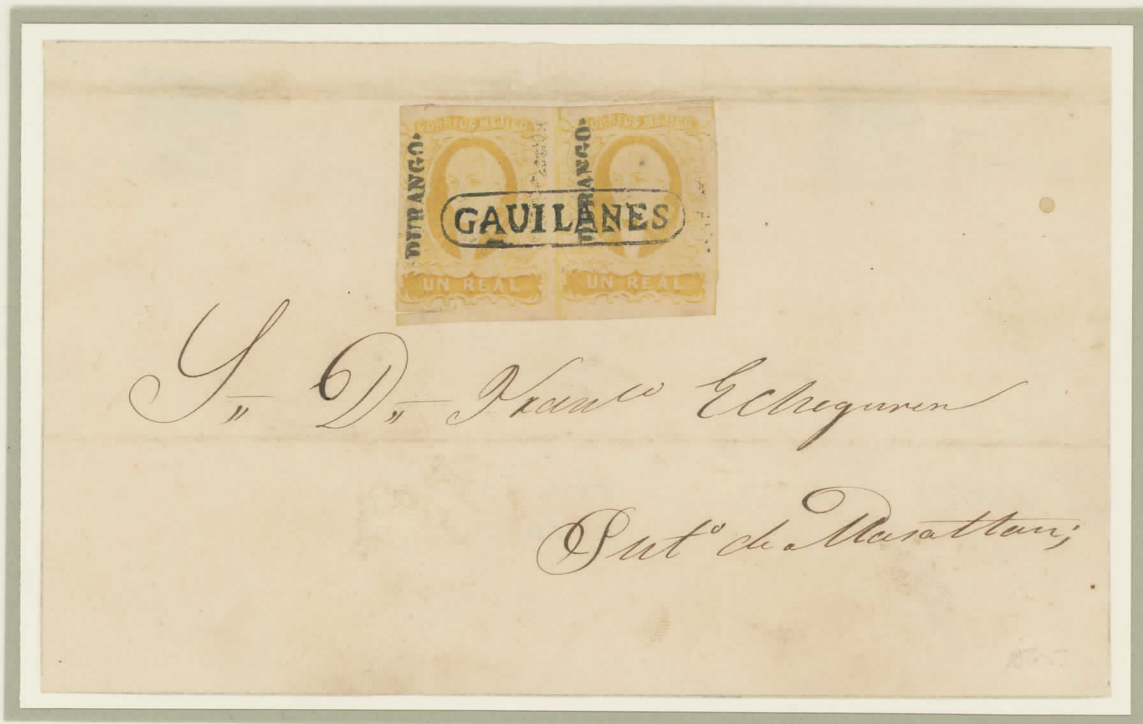
ALAMOS



METZTITLAN



TEMASCALTEPEC



GAVILANES



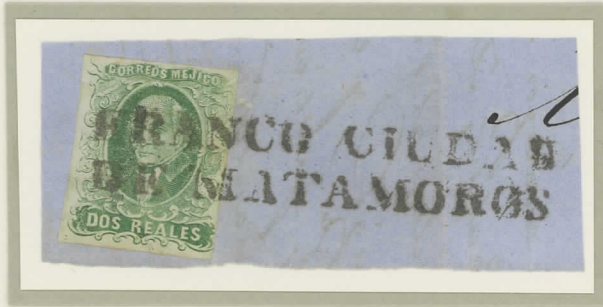
HUAMANTLA



NOPALUCAN



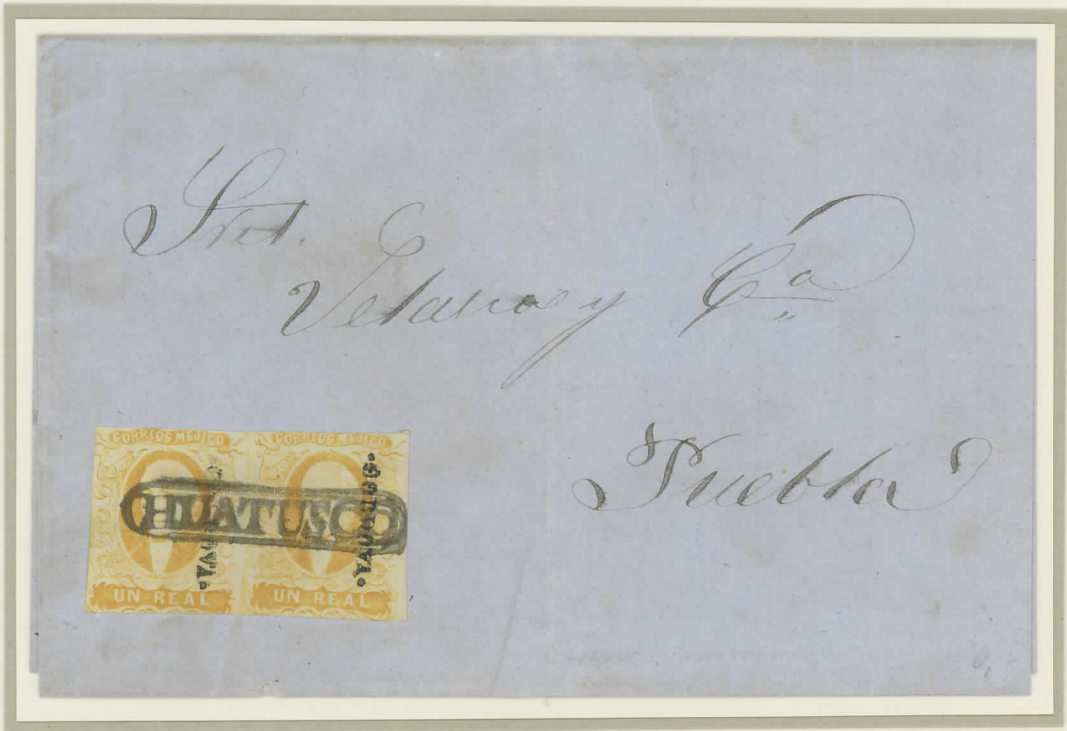
SAN AGUSTIN DEL PALMAR



CIUDAD DE MATAMOROS



CHALCHICOMULA TO PUEBLA



HUATUSCO TO PUEBLA  
JANUARY 3, 1858



PREZAS TO TAMPICO



PARRAL



AGUASCALIENTES



SAN CRISTOBAL



AGUASCALIENTES TO GUADALAJARA  
DECEMBER 4, 1856



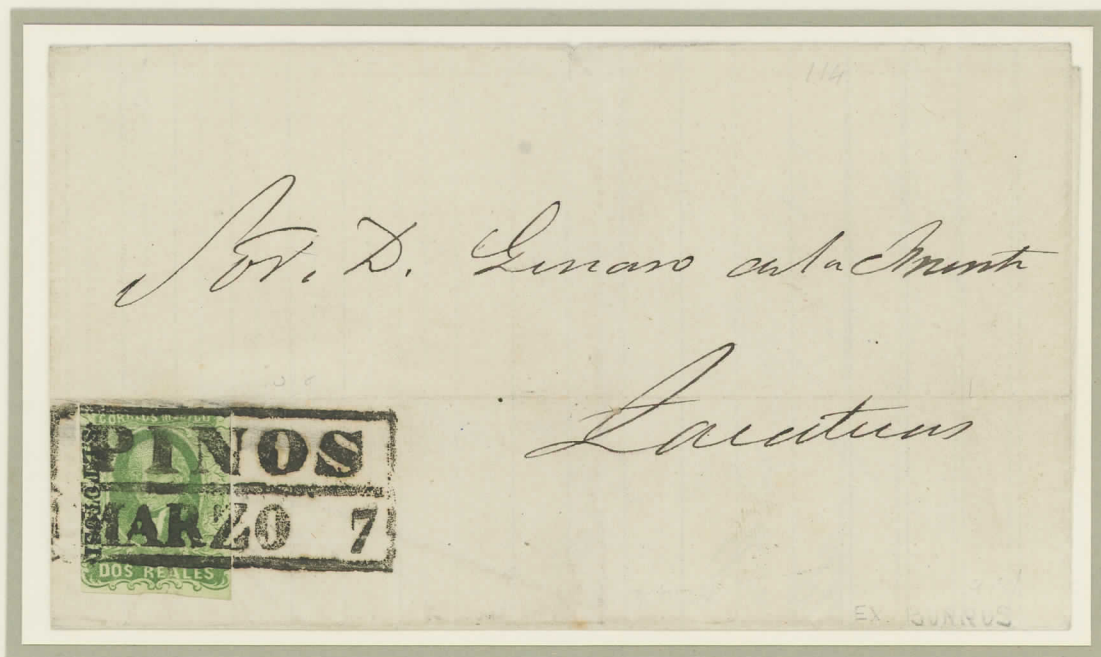
CIUDAD DE LA CONCEPCION



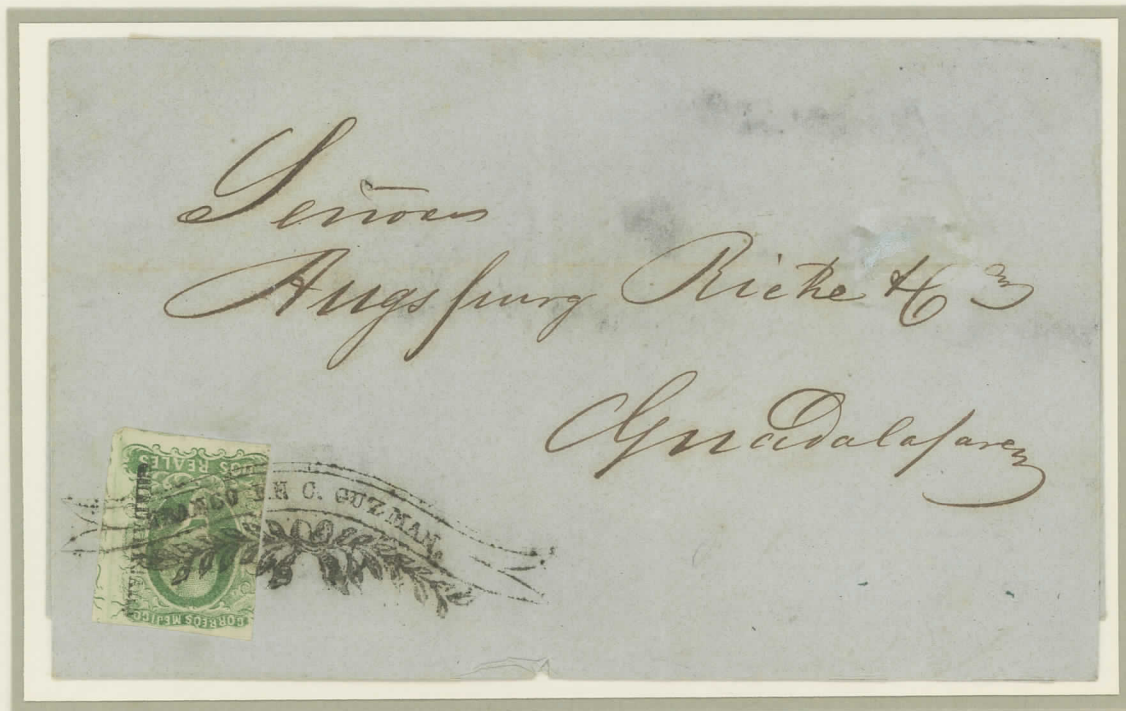
SALINAS DEL PENON BLANCO



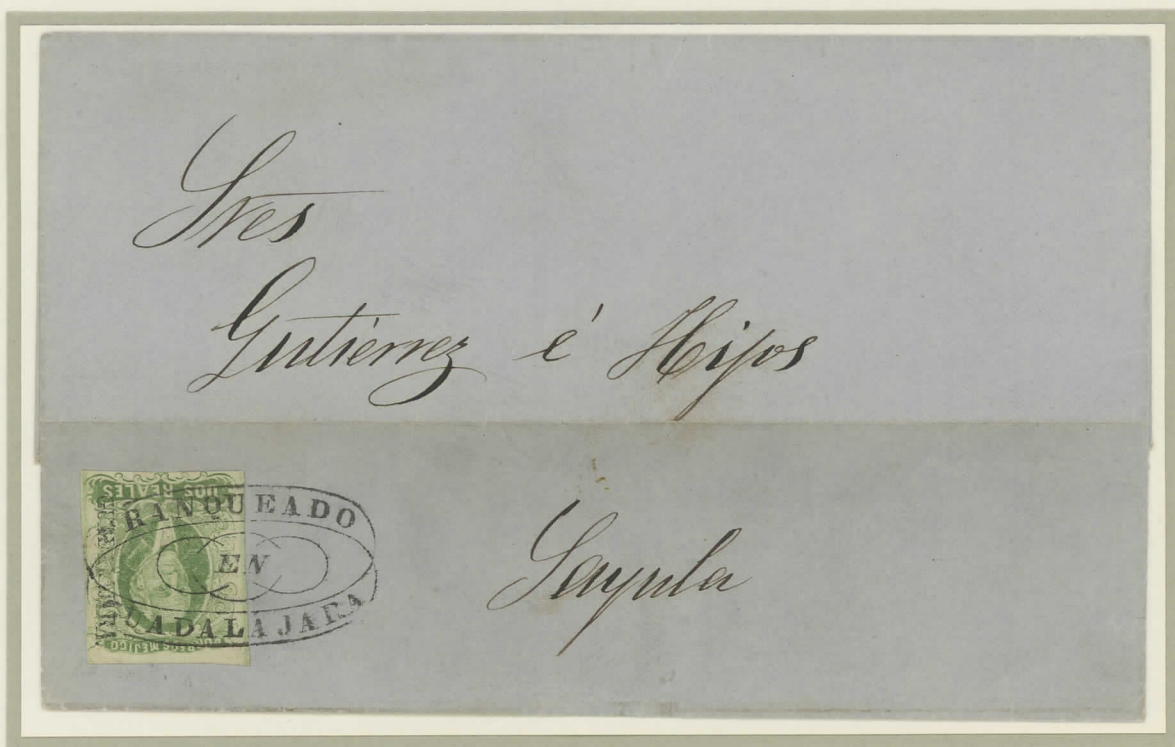
RIO VERDE



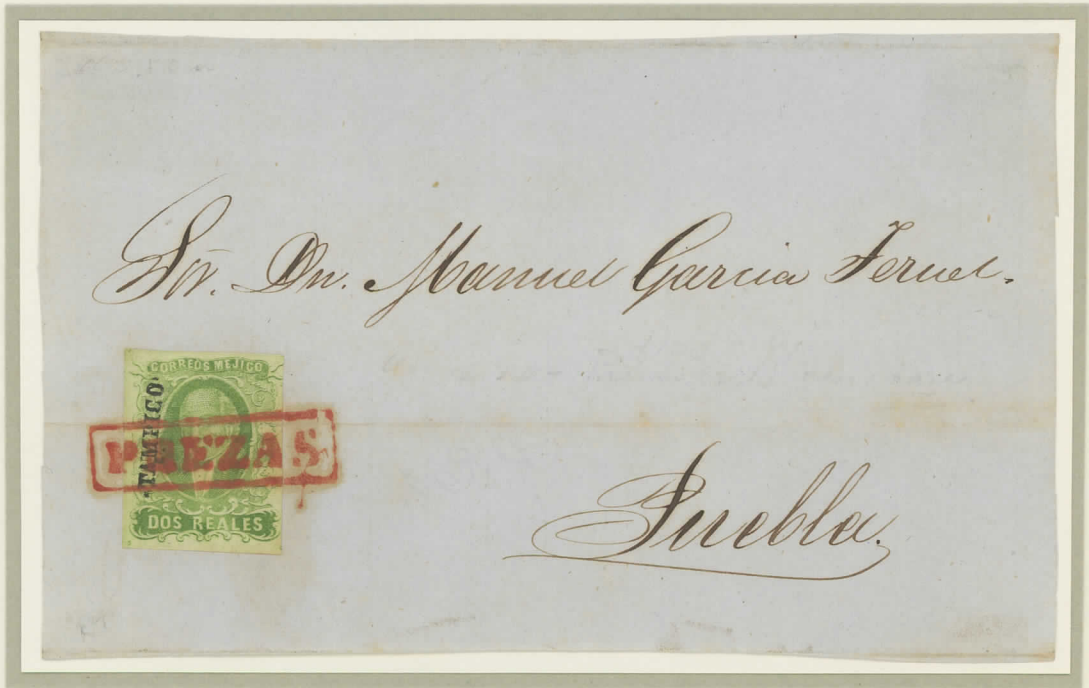
PINOS TO ZACATECAS  
MARCH 5, 1858



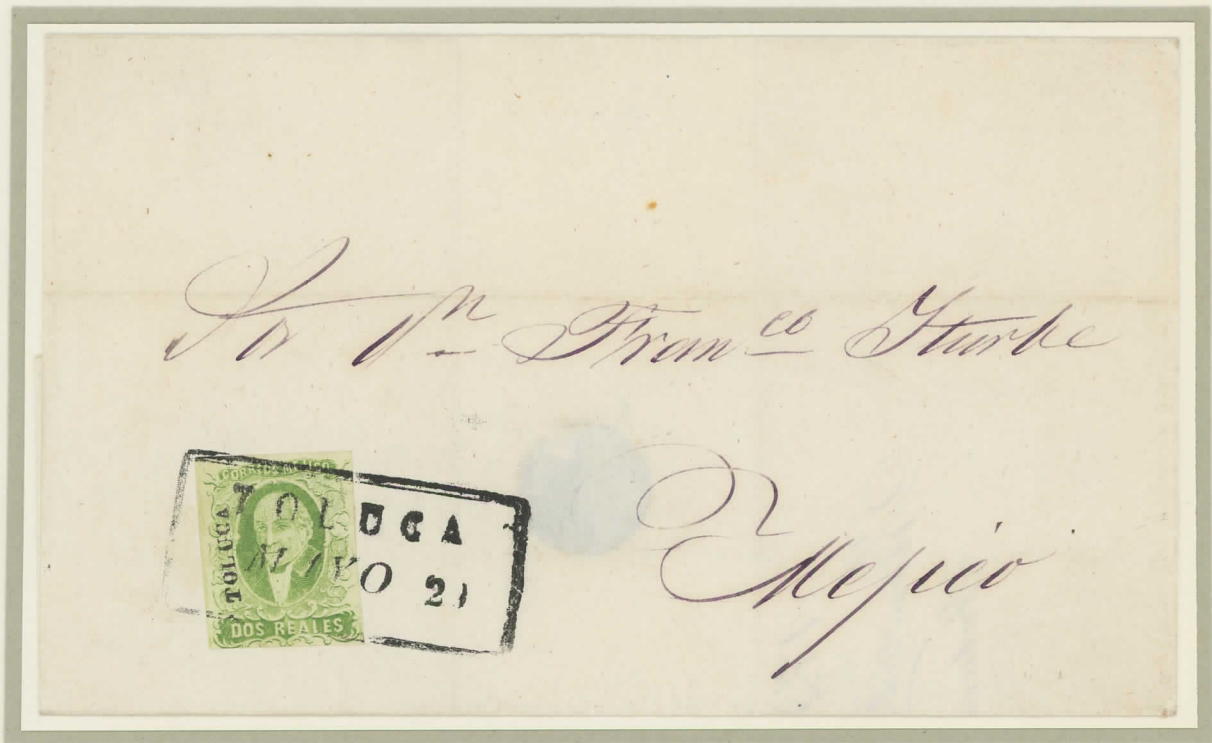
CIUDAD GUZMAN TO GUADALAJARA  
OCTOBER 18, 1857



GUADALAJARA TO SAYULA  
DECEMBER 12, 1858



PREZAS TO PUEBLA



TOLUCA TO MEXICO CITY



CAMPECHE IS KNOWN FOR USING LETTERS, FRACTIONS  
AND NUMBERS AS CANCELS. THE THREE EXAMPLES  
APPEARING HERE ARE REPRESENTATIVE.



VERA CRUZ  
JANUARY 4, 1857



ACATLAN TO PUEBLA





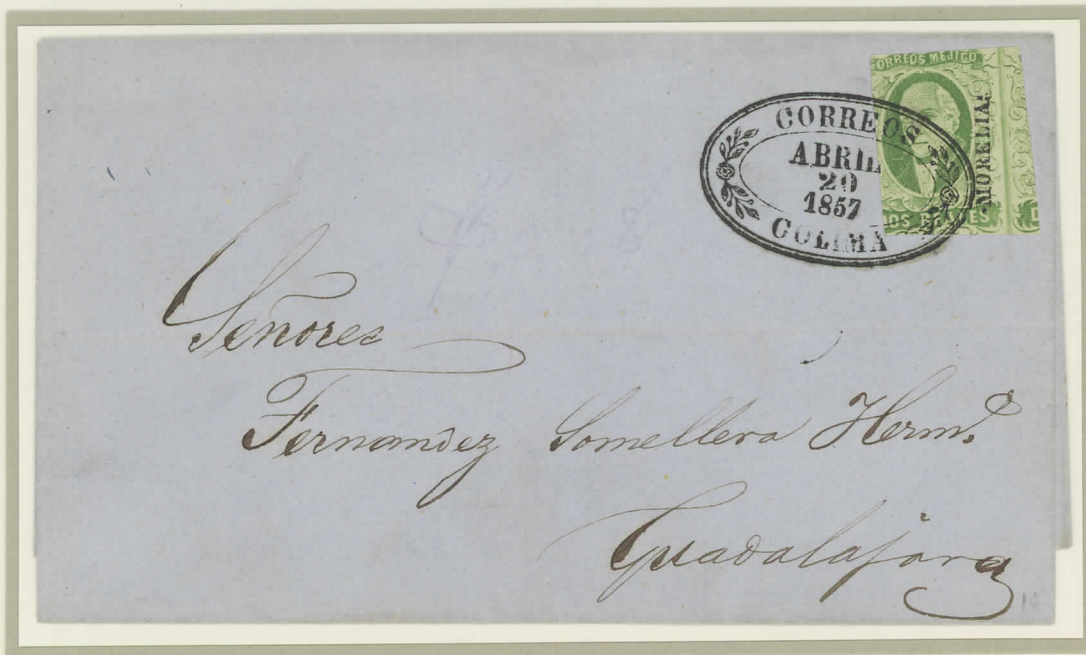
MAZATLAN TO DURANGO  
RED MAZATLAN WREATH WITH BLACK DURANGO GRID  
APRIL 12, 1857



MAZATLAN TO GUADALAJARA  
MAZATLAN WREATH  
MARCH 8, 1859



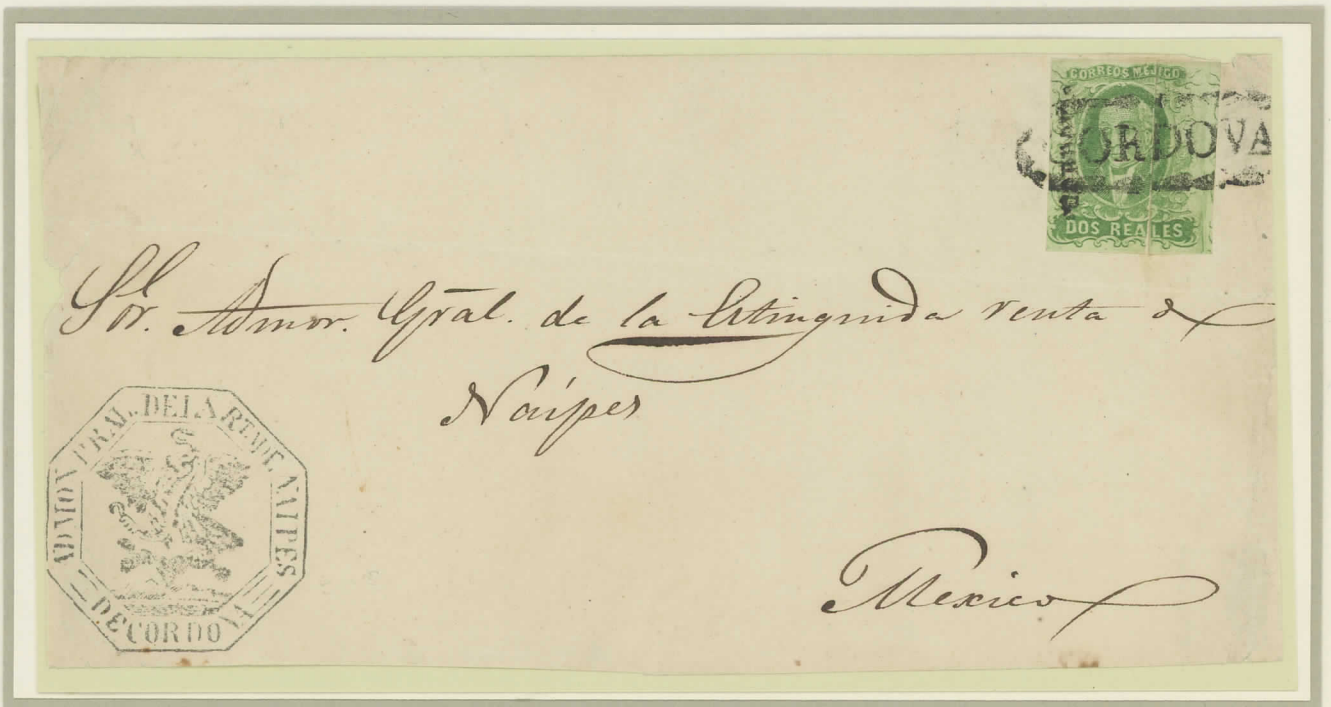
COLIMA TO MEXICO CITY  
APRIL 24, 1858



COLIMA TO GUADALAJARA  
APRIL 20, 1857



ACATZINGO TO PUEBLA



CORDOVA TO MEXICO CITY



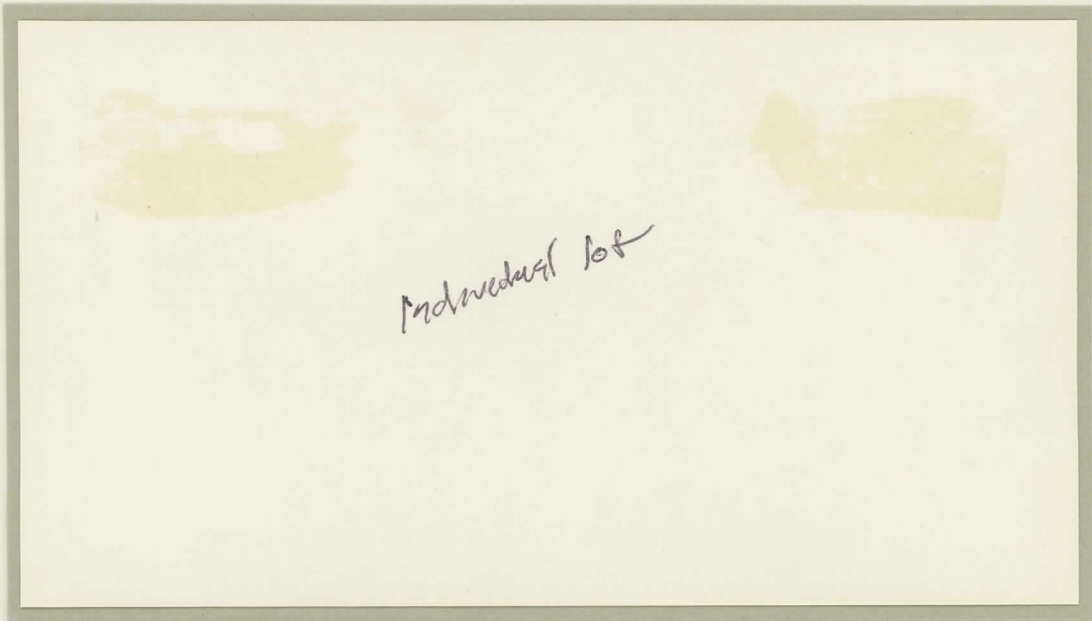
PATZCUARO TO MEXICO CITY  
JULY 4, 1857



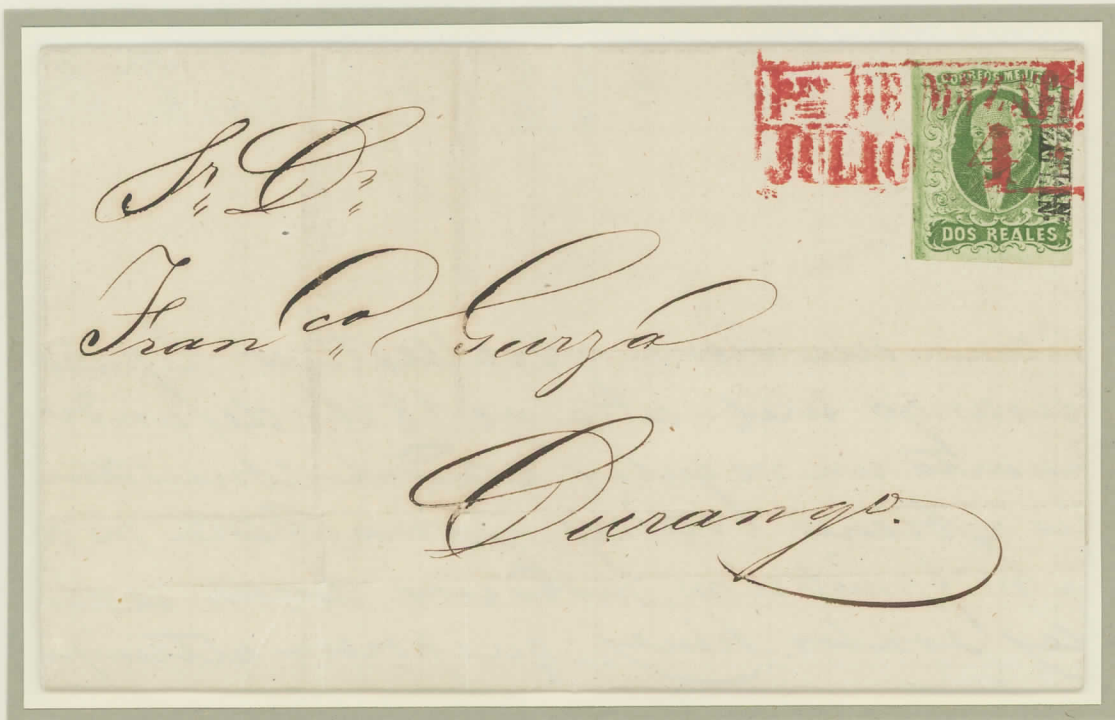
MORELIA TO MEXICO CITY  
JANUARY 7, 1857



CUERNAVACA TO MEXICO CITY  
SEPTEMBER 10, 1857



HERMOSILLO TO GUAYMAS  
MARCH 26, 1857



MAZATLAN TO DURANGO  
JULY 4, 1857



GUANAJUATO



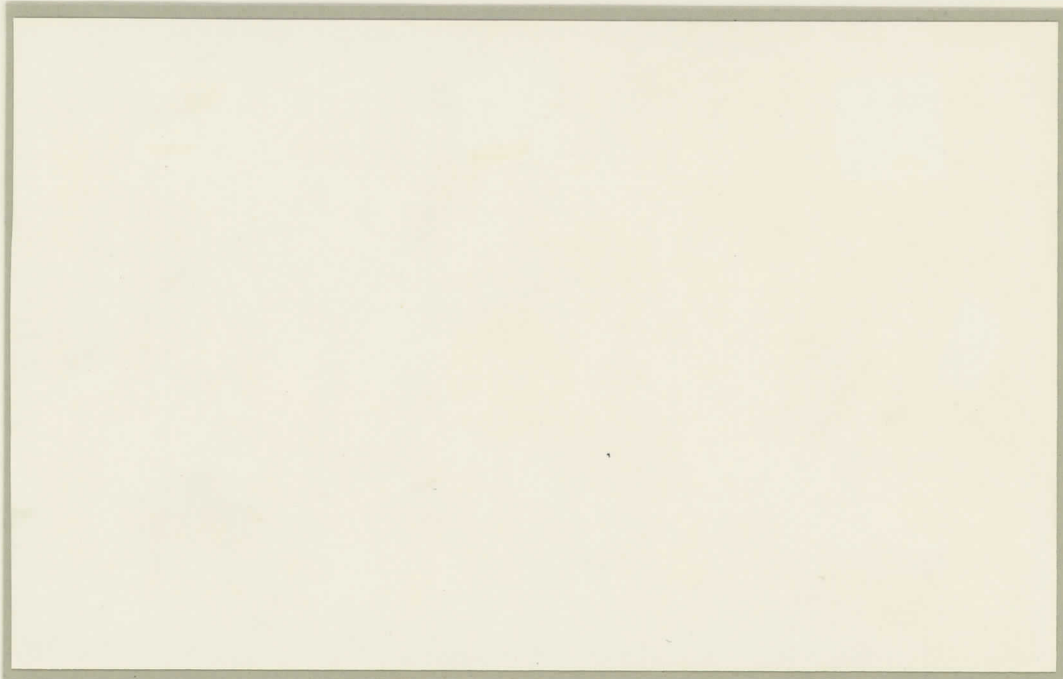
PIEDRA GORDA



IRAPUATO  
FEBRUARY 20, 1857

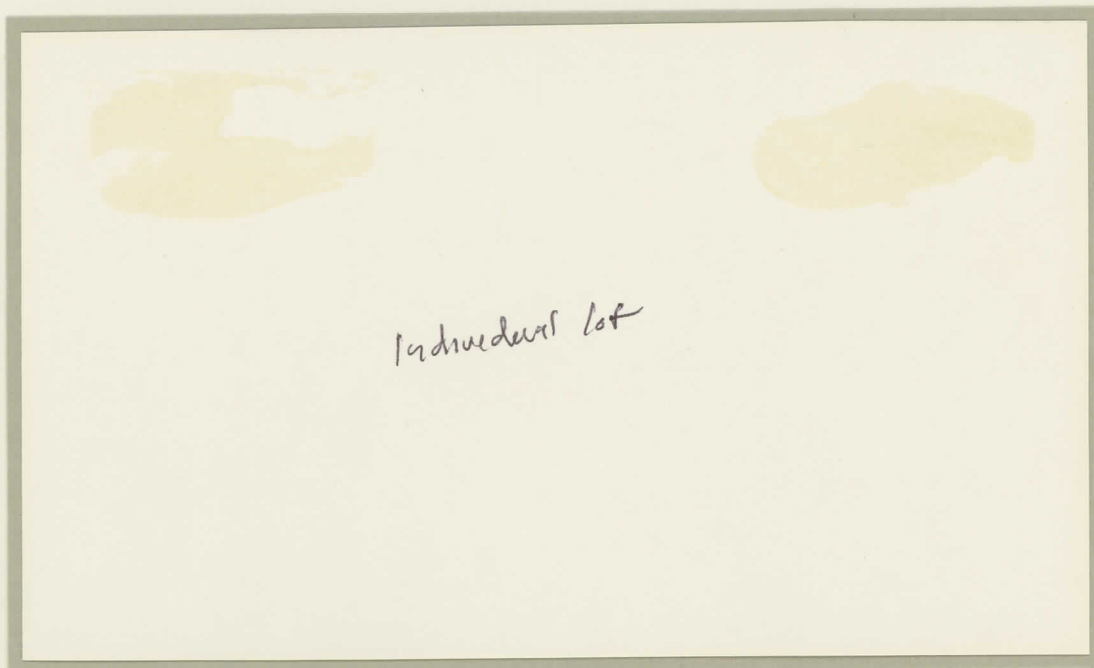


GUANAJUATO



LA LUZ TO MEXICO CITY  
AUGUST, 1860

1856 HIDALGO ISSUE



OJO CALIENTE (SALINAS DEL PENON BLANCO TRANSIT)  
NOVEMBER 15, 1858

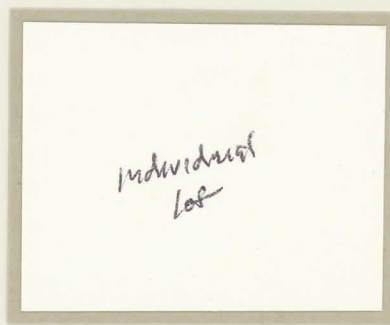


SAN MIGUEL DEL MEZQUITAL TO ZACATECAS  
FEBRUARY 14, 1858





RIO GRANDE



TOLUCA DILIGENCIAS



ZACUALTIPAN



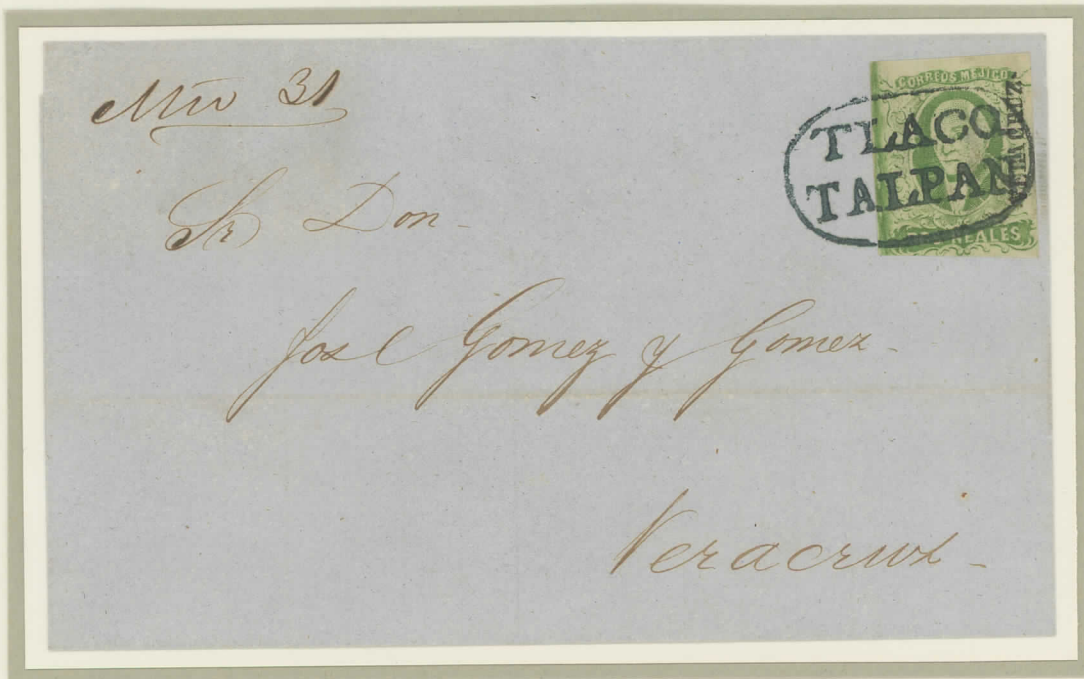
CHALCHIHUITES



COPALA



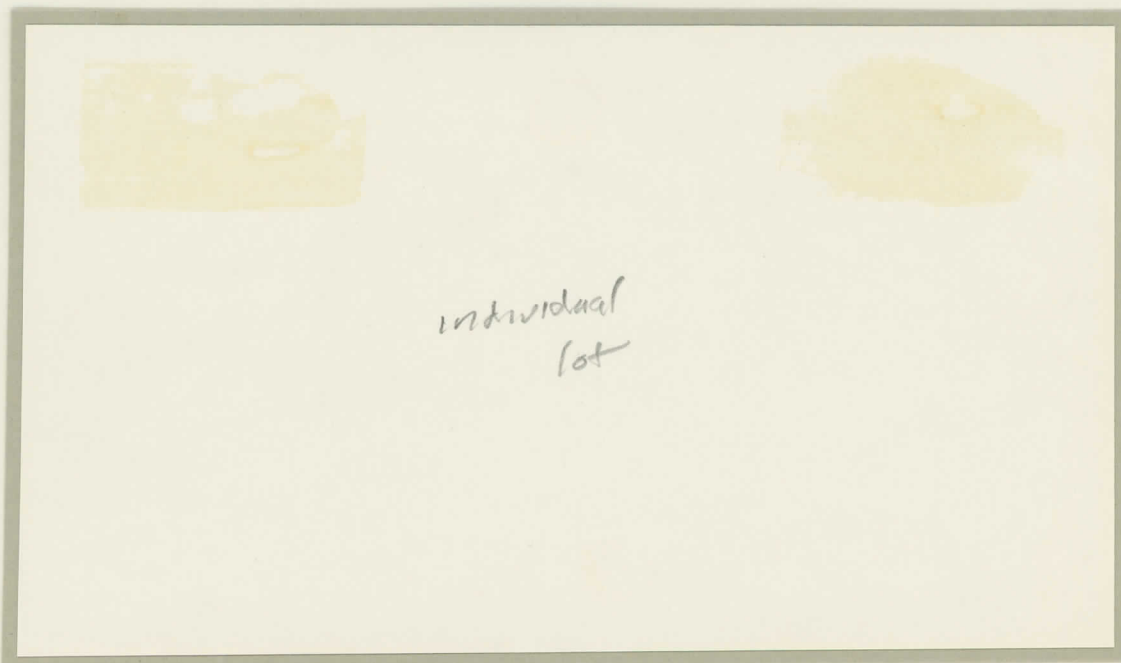
ZACOALCO TO SAYULA  
JUNE 22, 1857



TLACOTALPAM TO VERA CRUZ  
MARCH 31, 1857



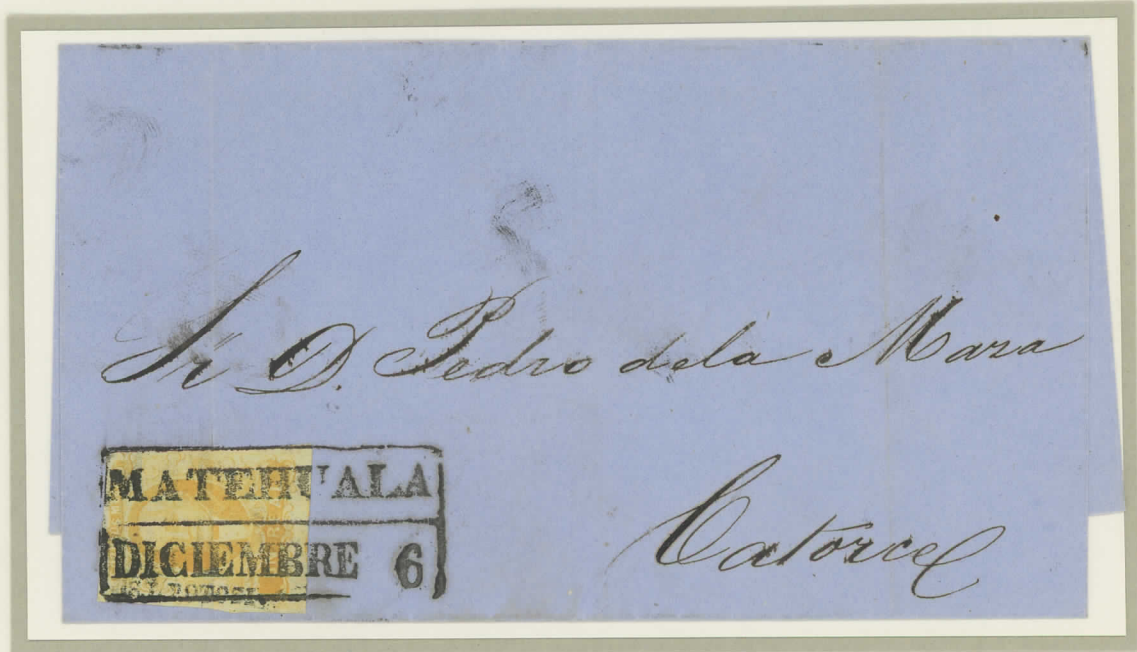
SAN JUAN DEL RIO TO MEXICO CITY  
JUNE 10, 1858



SAN JOSE DE ITURBIDE TO MEXICO CITY  
APRIL 28, 1859



HACIENDA DE ESPIRITU SANTO TO MEXICO CITY



MATEHUALA TO CATORCE  
DECEMBER 6, 1857



LA PIEDAD



TARETAN

THIS CANCEL IS COMPOSED OF TWO OVAL CLICHES AND APPEARS NORMALLY IN A VERTICAL FORMAT. THE HORIZONTAL FORMAT IS MUCH LESS COMMON.



HUIMANGUILLO TO VERA CRUZ  
NOVEMBER 16, 1856



ACAYUCAN



SAN ANDRES TUXTLA



THREE CANCELS OF ALVARADO