

30 a/b

31

31 a/b/c

32



36 C
36 C



37

38

38a/b

38c/d

39



39a

40a/b



3a



46



050



51



052



054

055

056

57 50x9

58

Type 1



Type 2



Type 1

Type 1



Type 3

Type 1

59
SG 62 & 63, 64 & 65
see separate book for
RECONSTRUCTION

Scott 46, 47
1882. Reconstruction

60a

061

62



Type 1

065



a/b



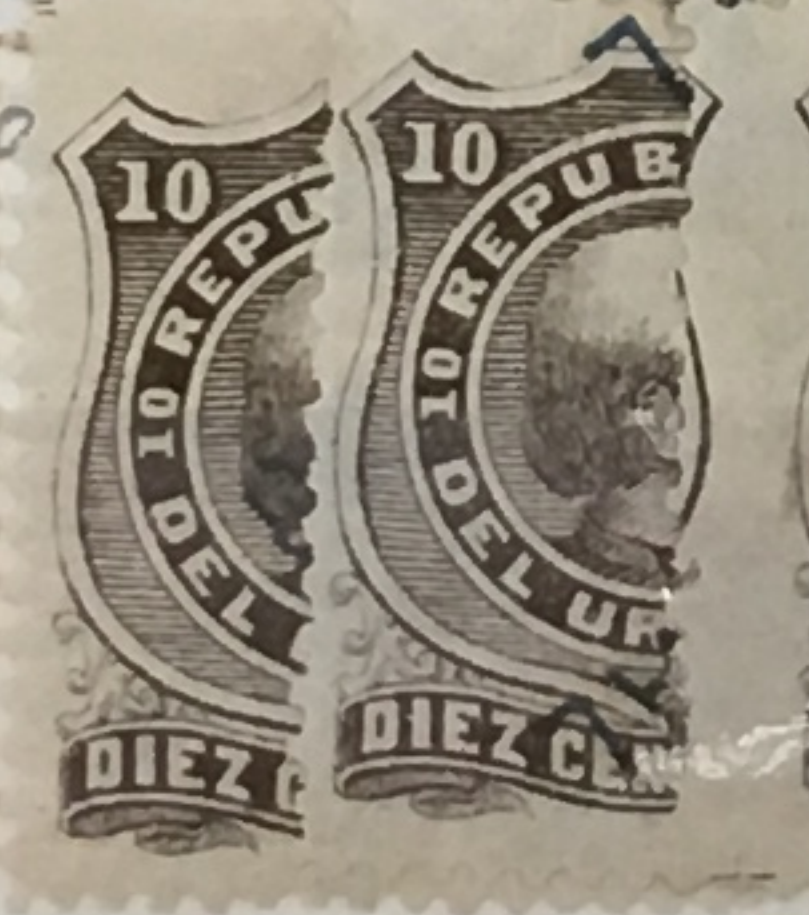
Type 2

67a/b

68



Type 1



070



072



75-76
SG 77 see
separate book for
reconstruction

75c/d

76



78

78-79
SG 081 see separate
book for
reconstruction

79 ①

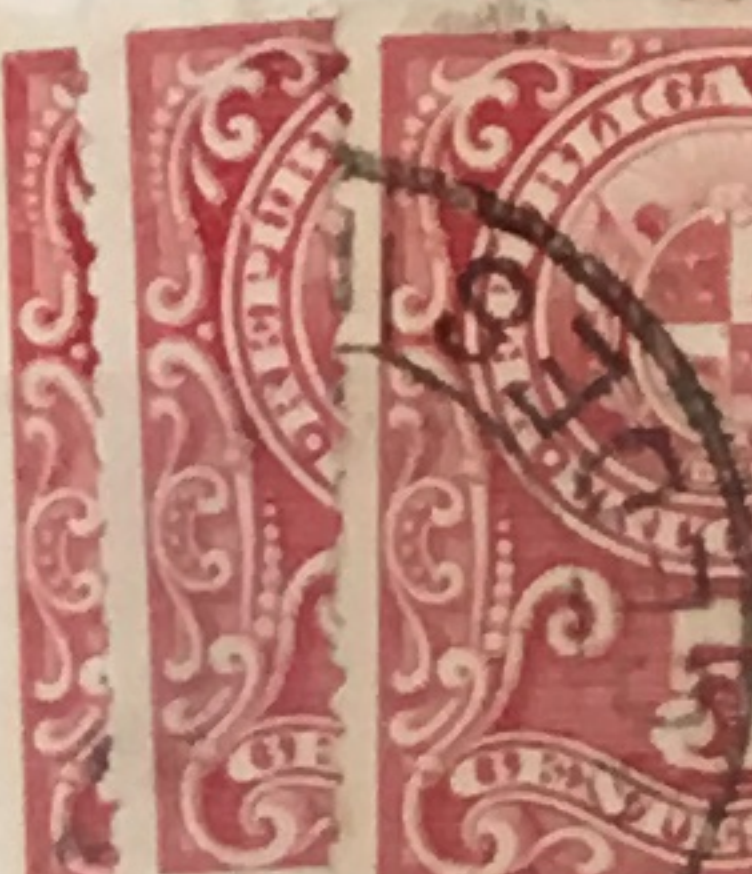
080

080a/b

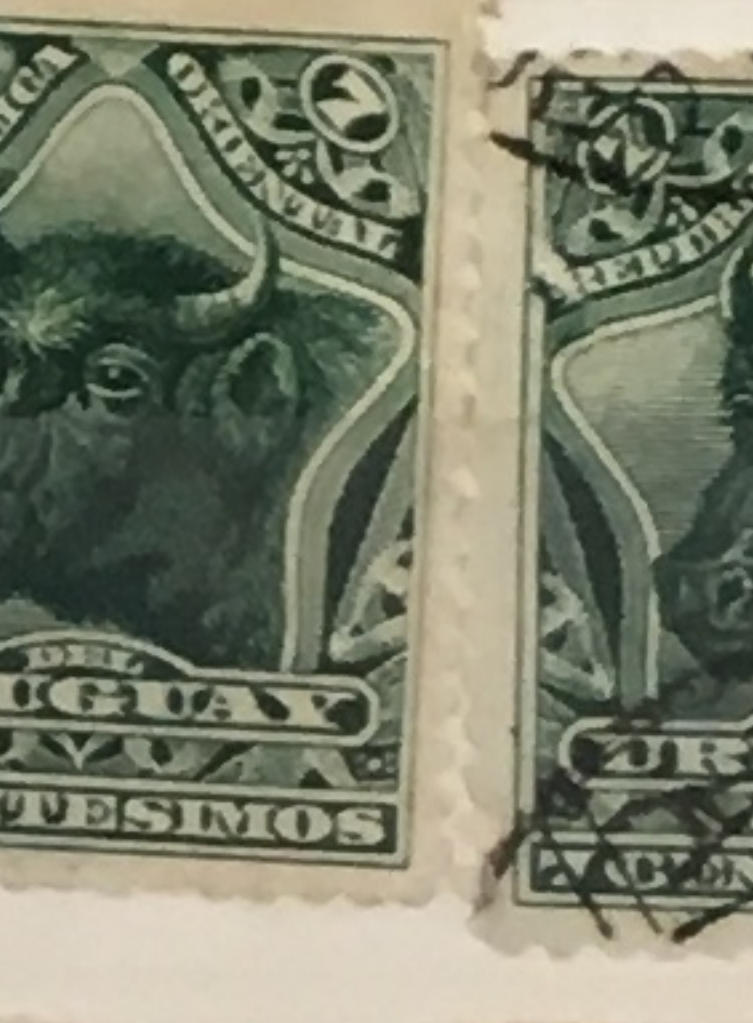
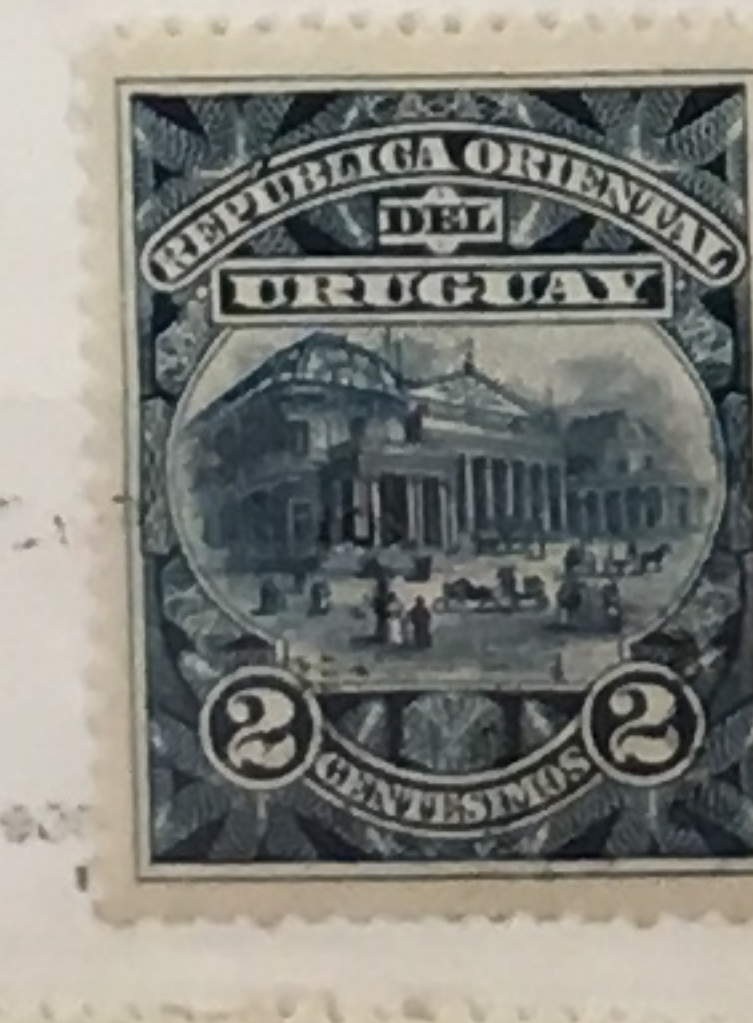
081



2a/b/c



147



162



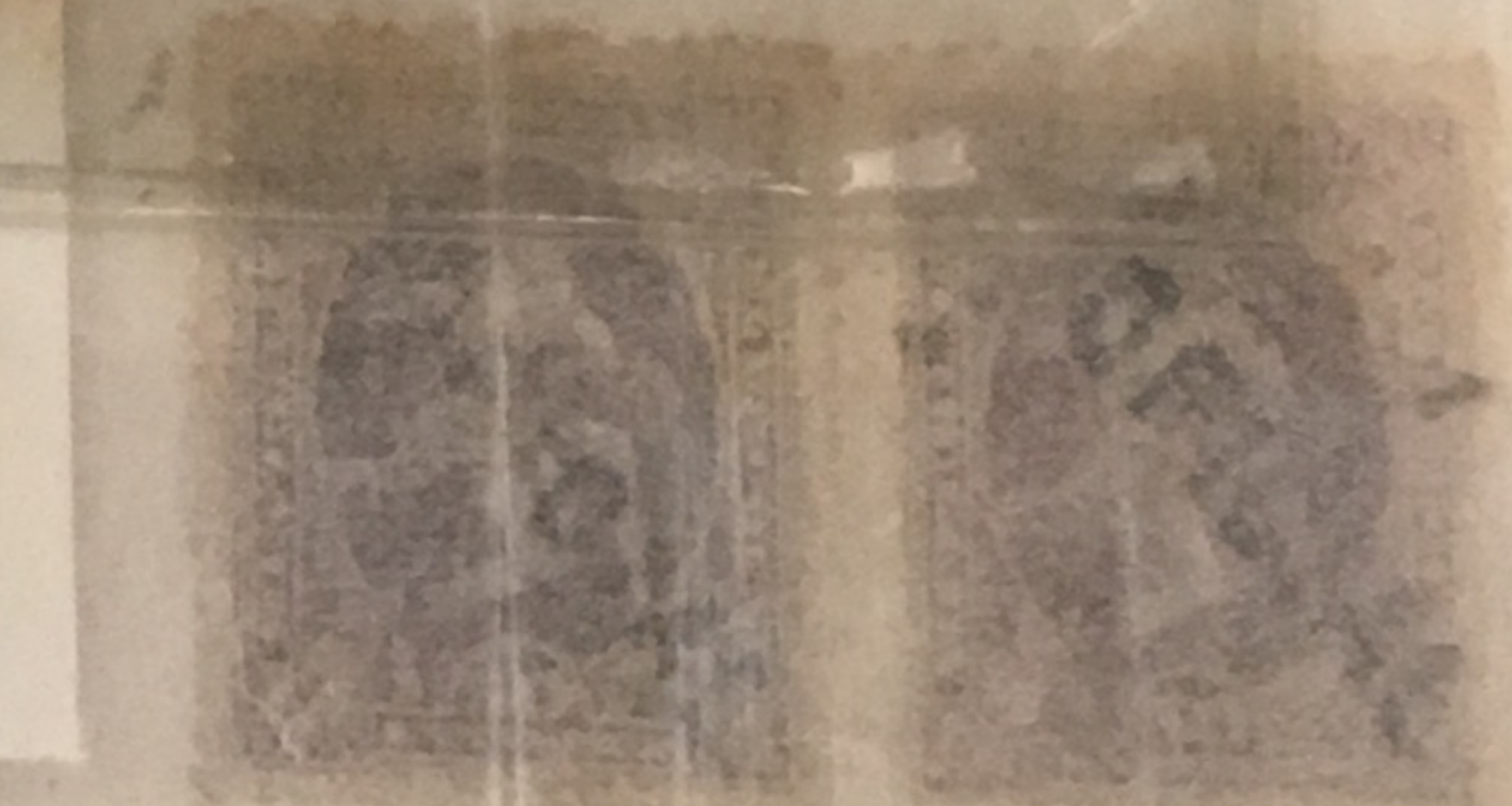
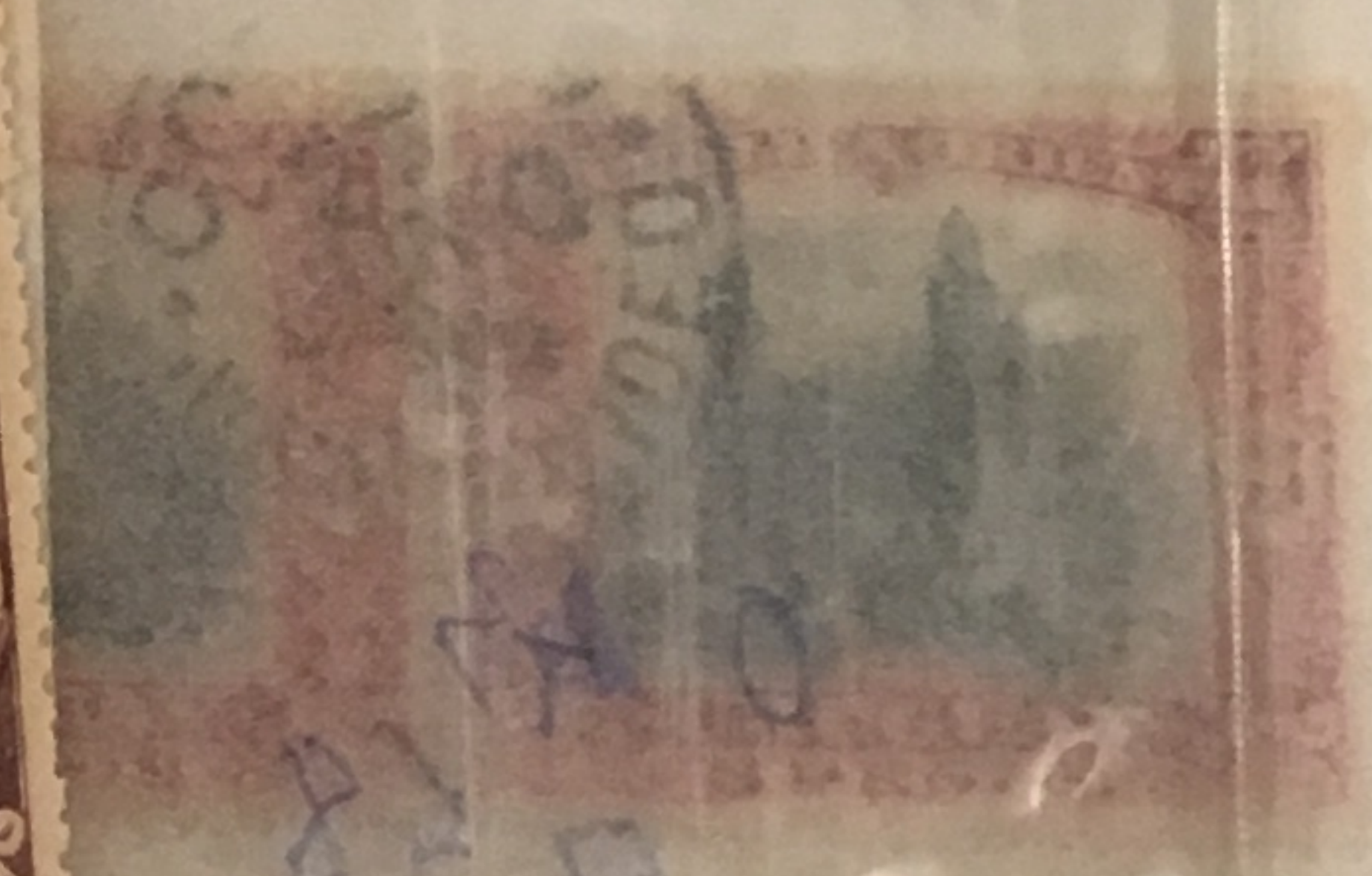
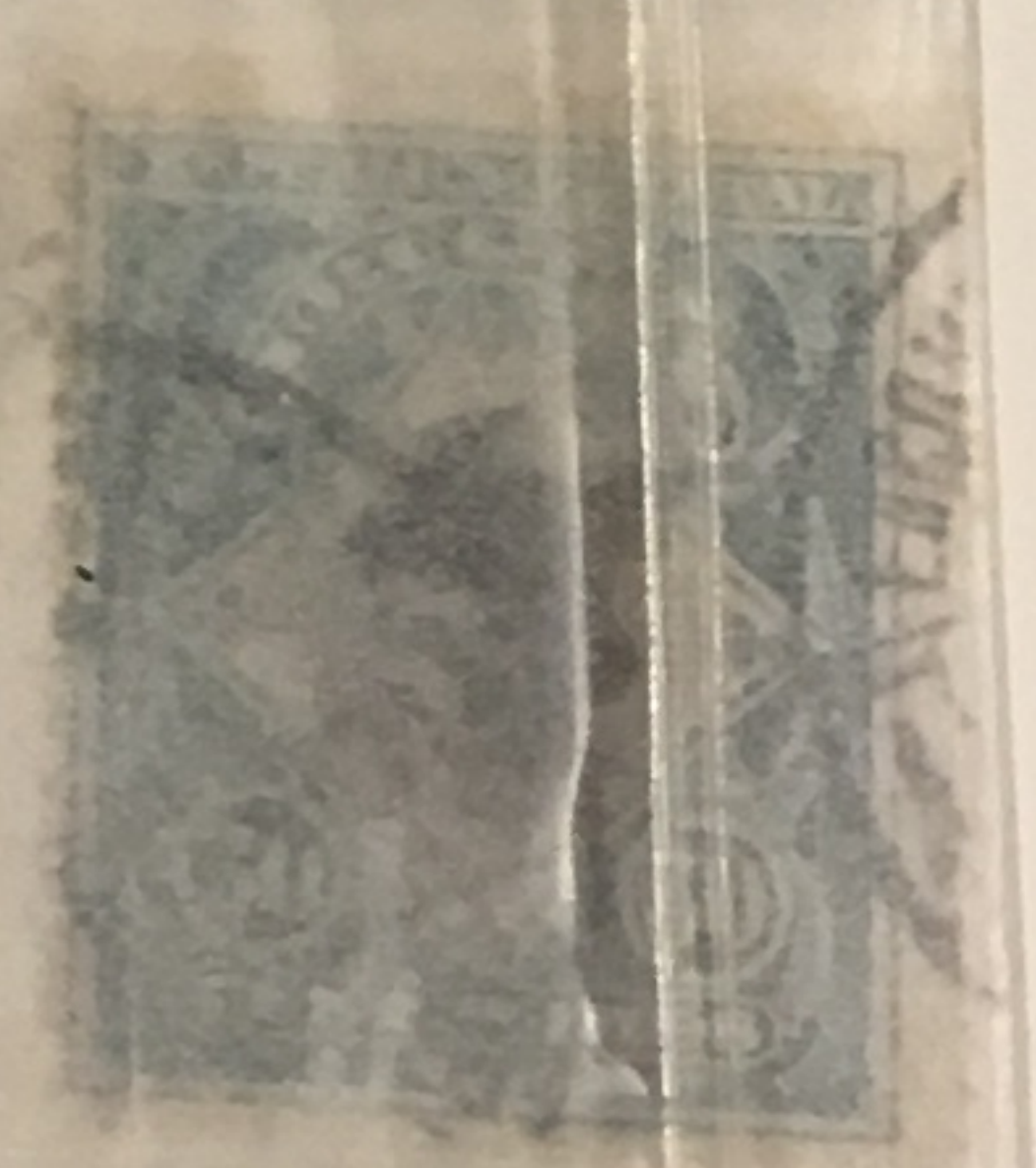
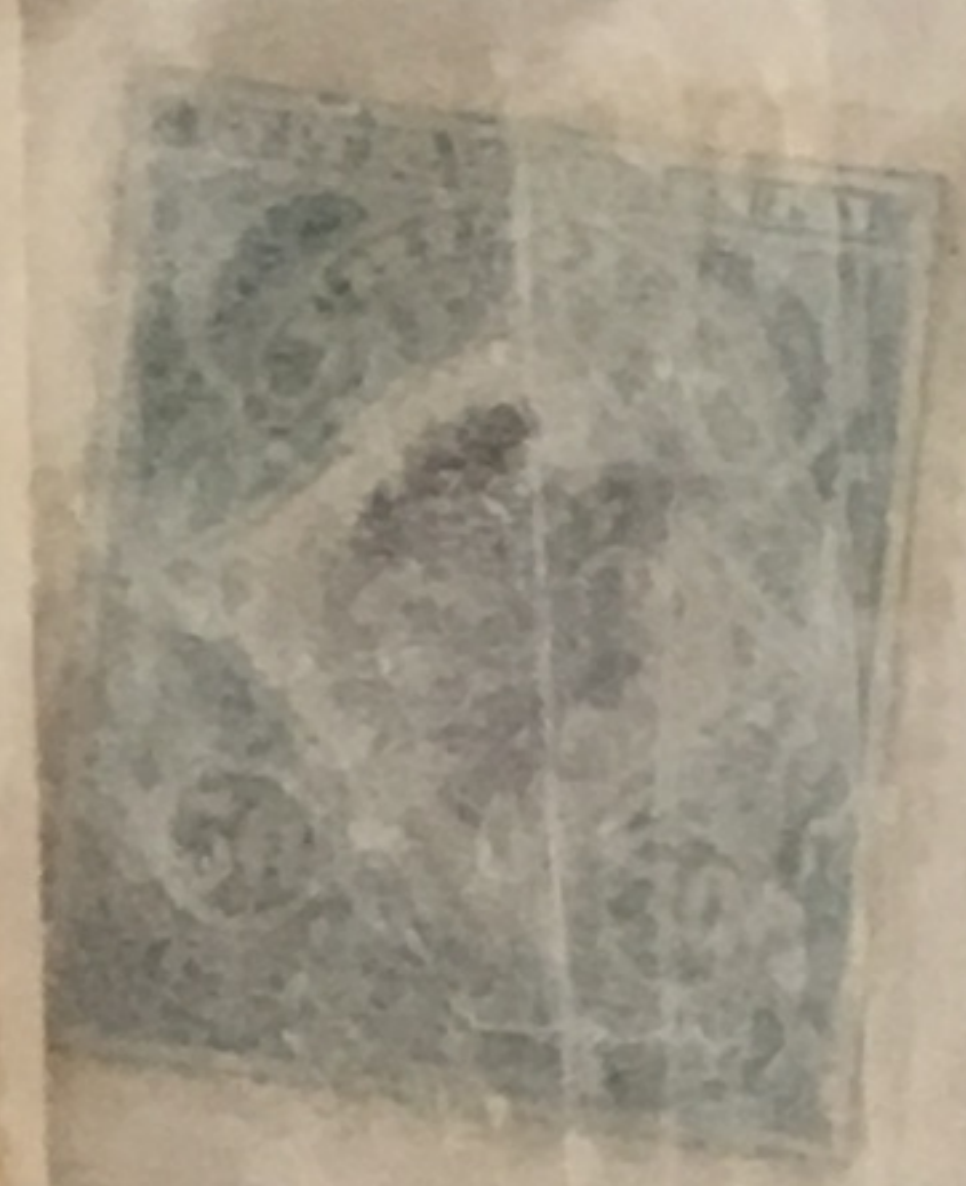
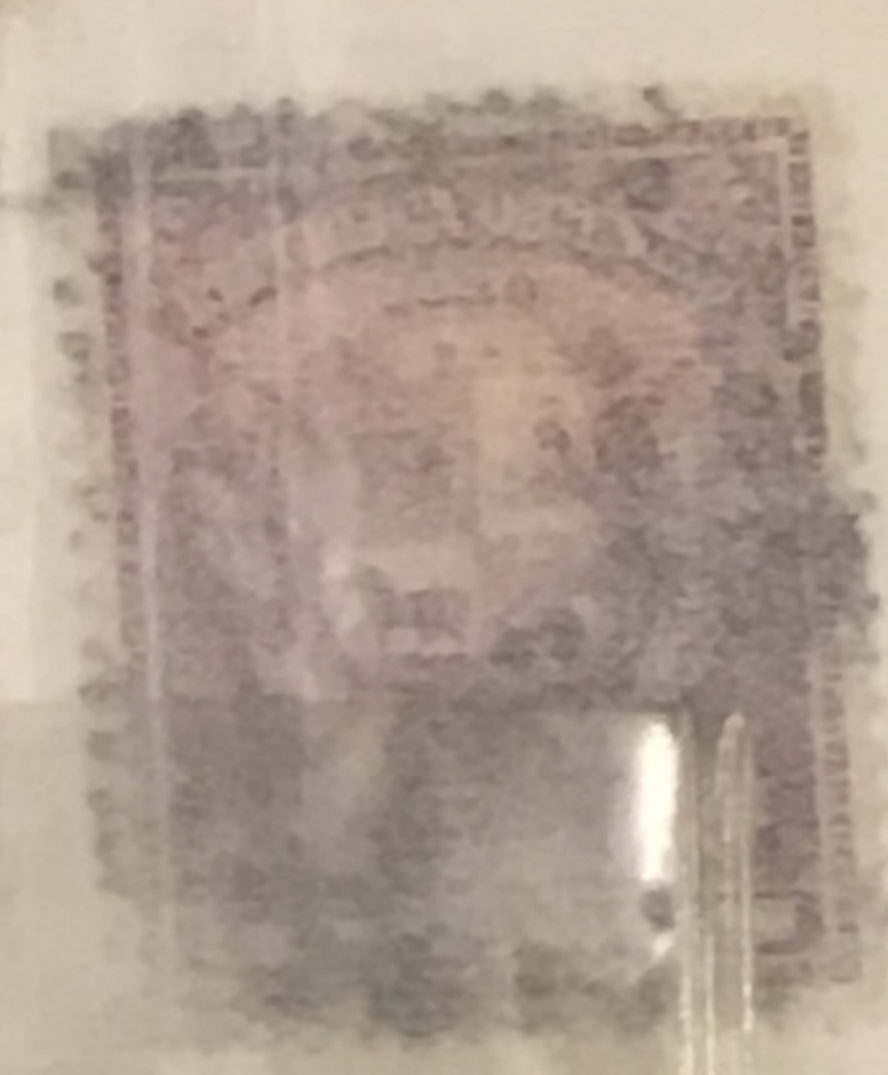
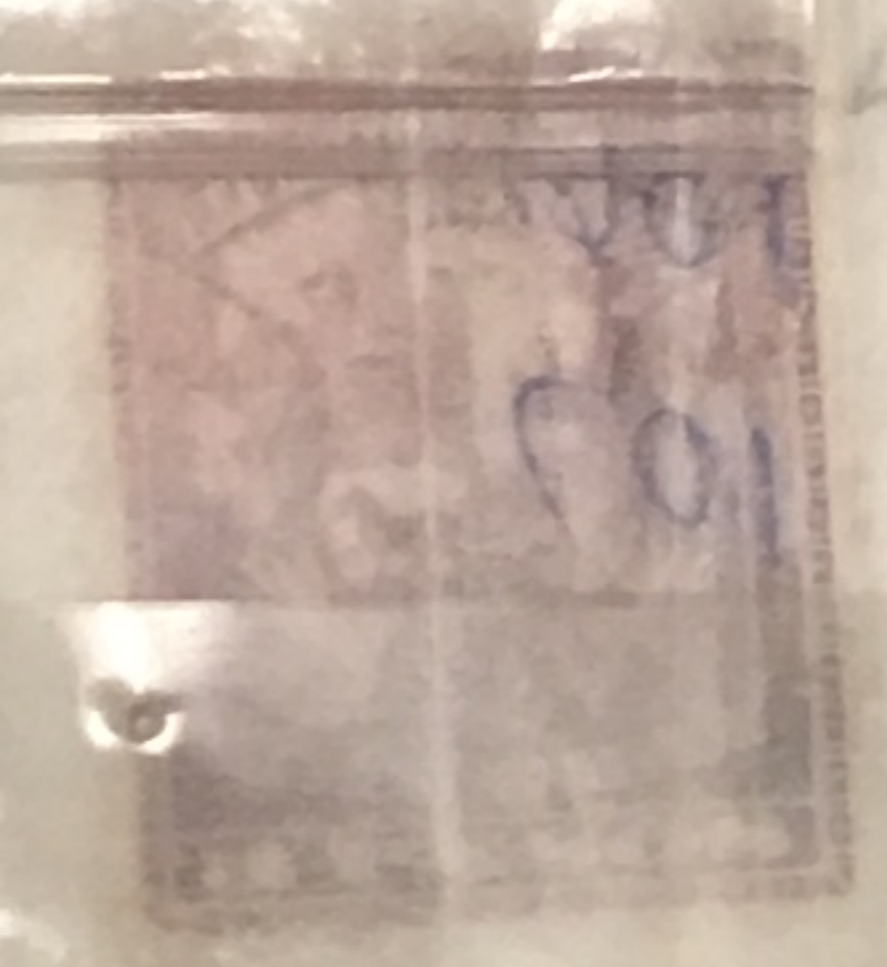
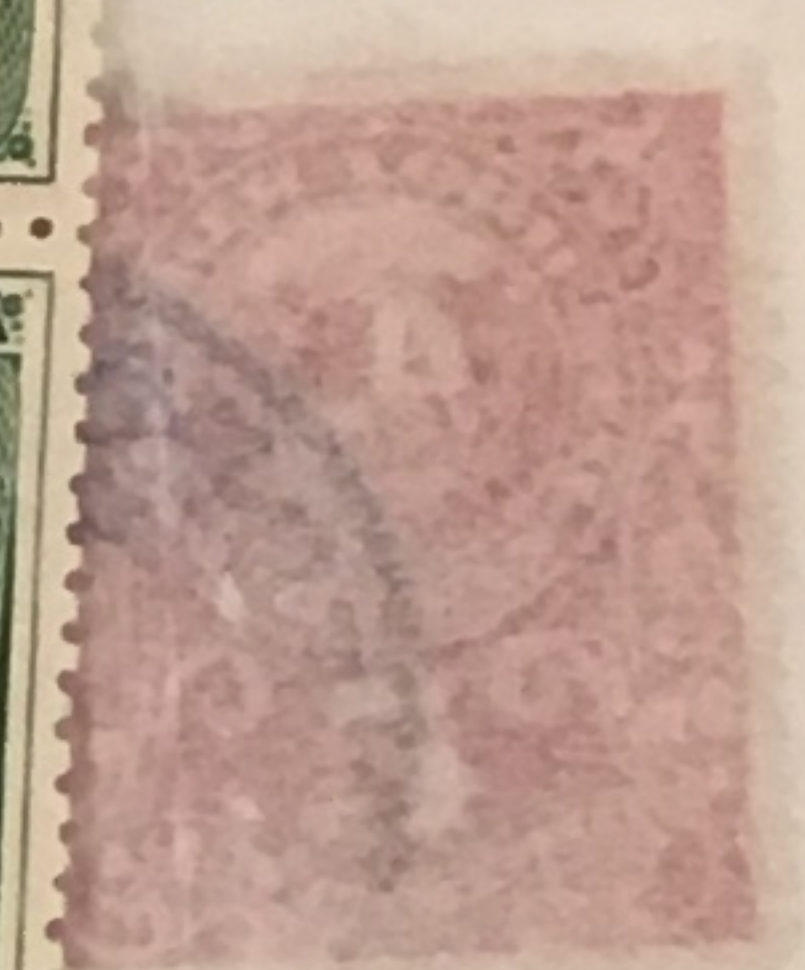
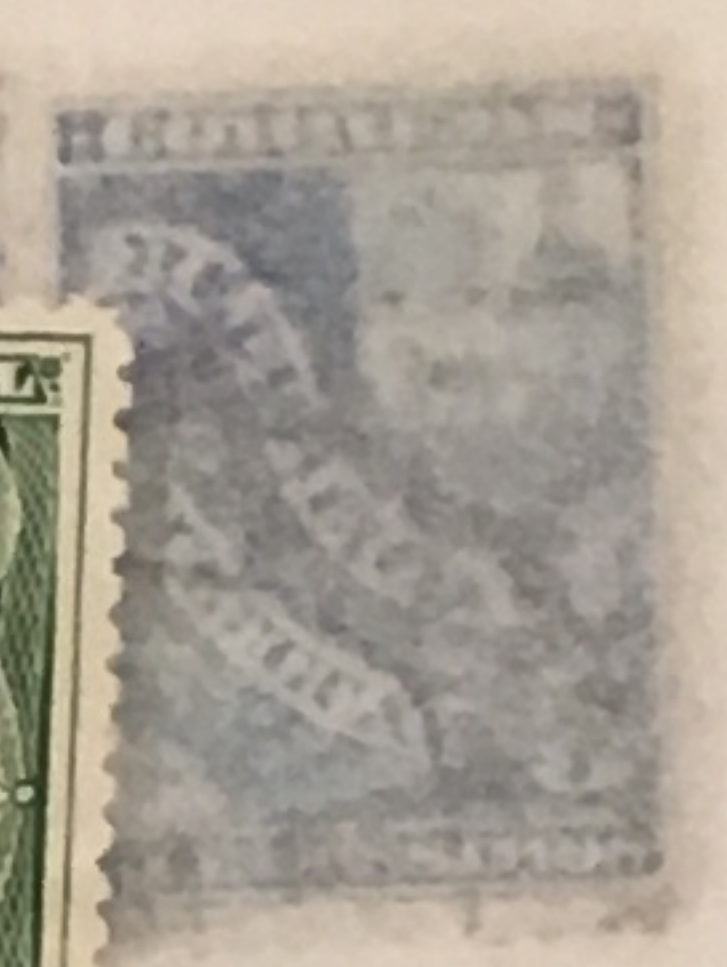
0164

0165

0166

0167

81 32



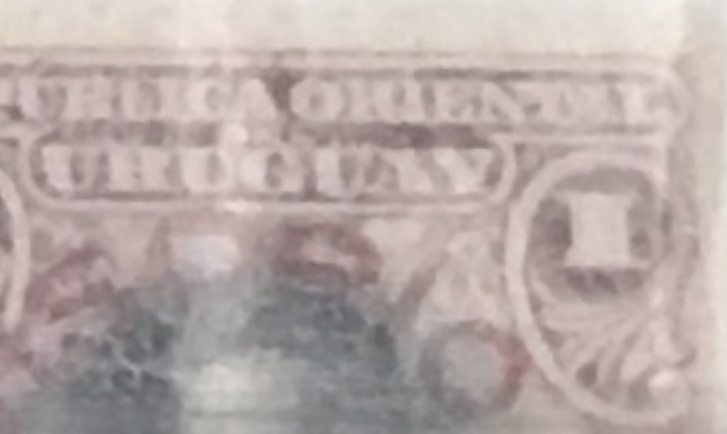
2165

0166

0167

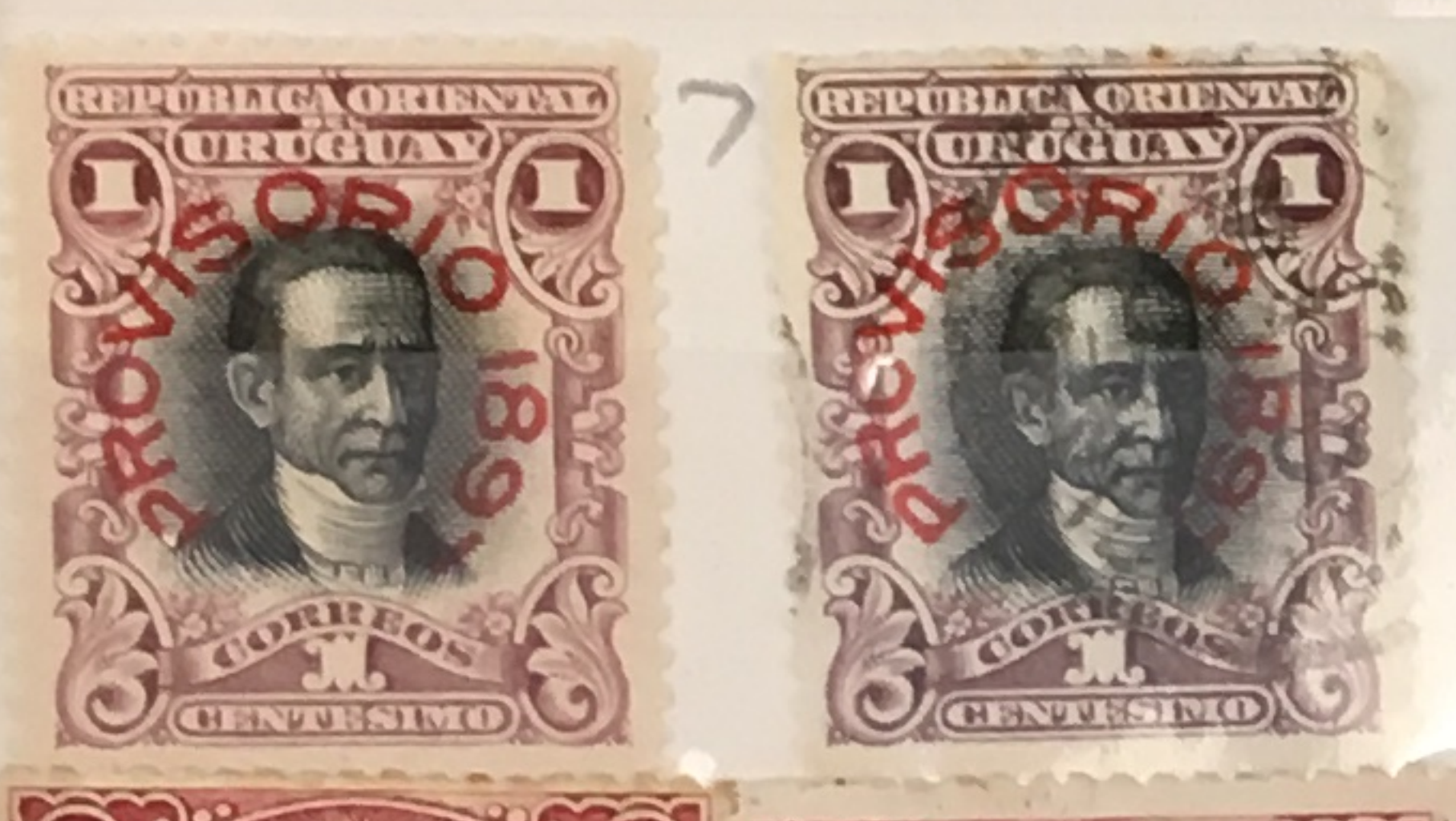


Handwritten numbers: 100, 100, 100



Handwritten number: 100





177



179



180a



191



0195



197a

198



0226

0227

0227a

0228

210a

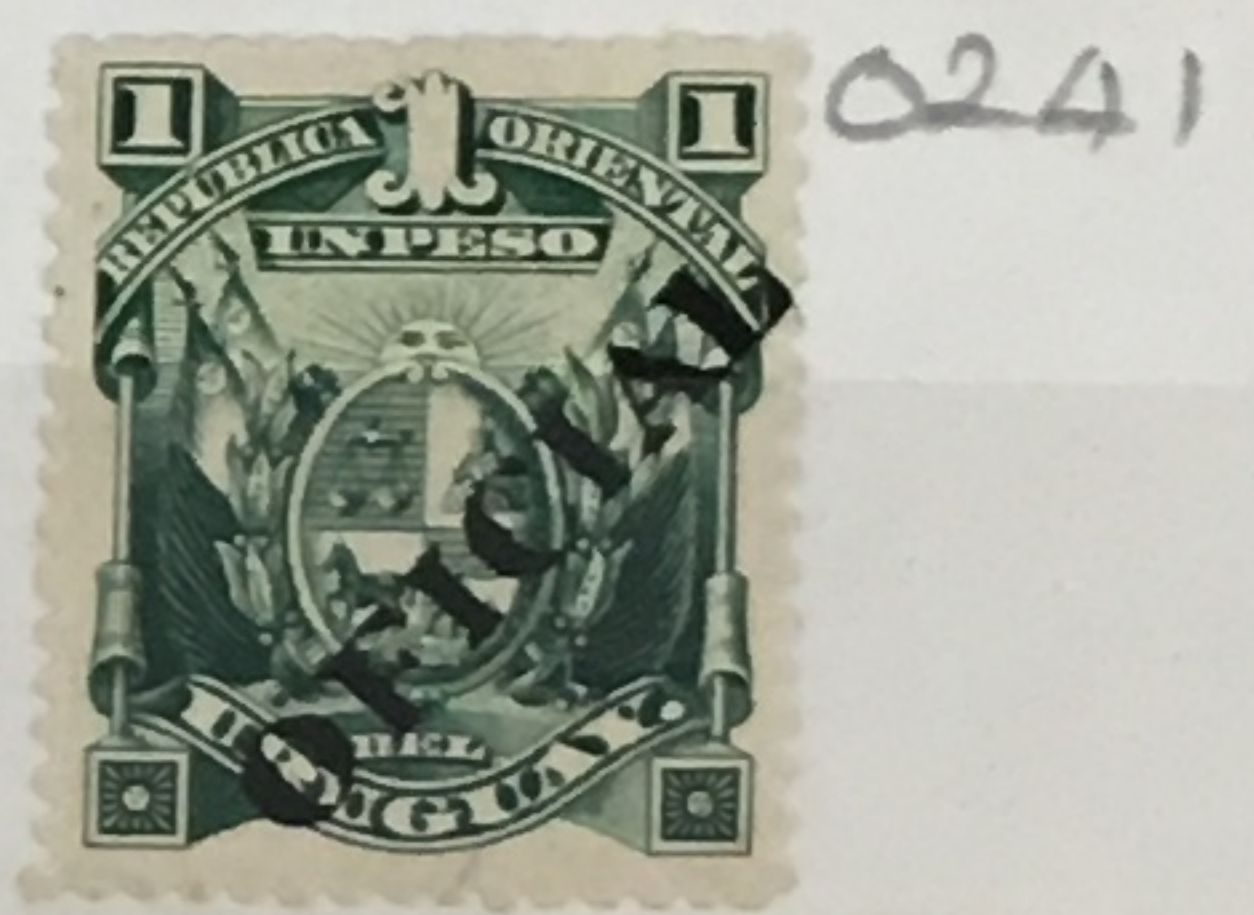
215

2

2

2

0224



253a



254b

254c

255

256



257



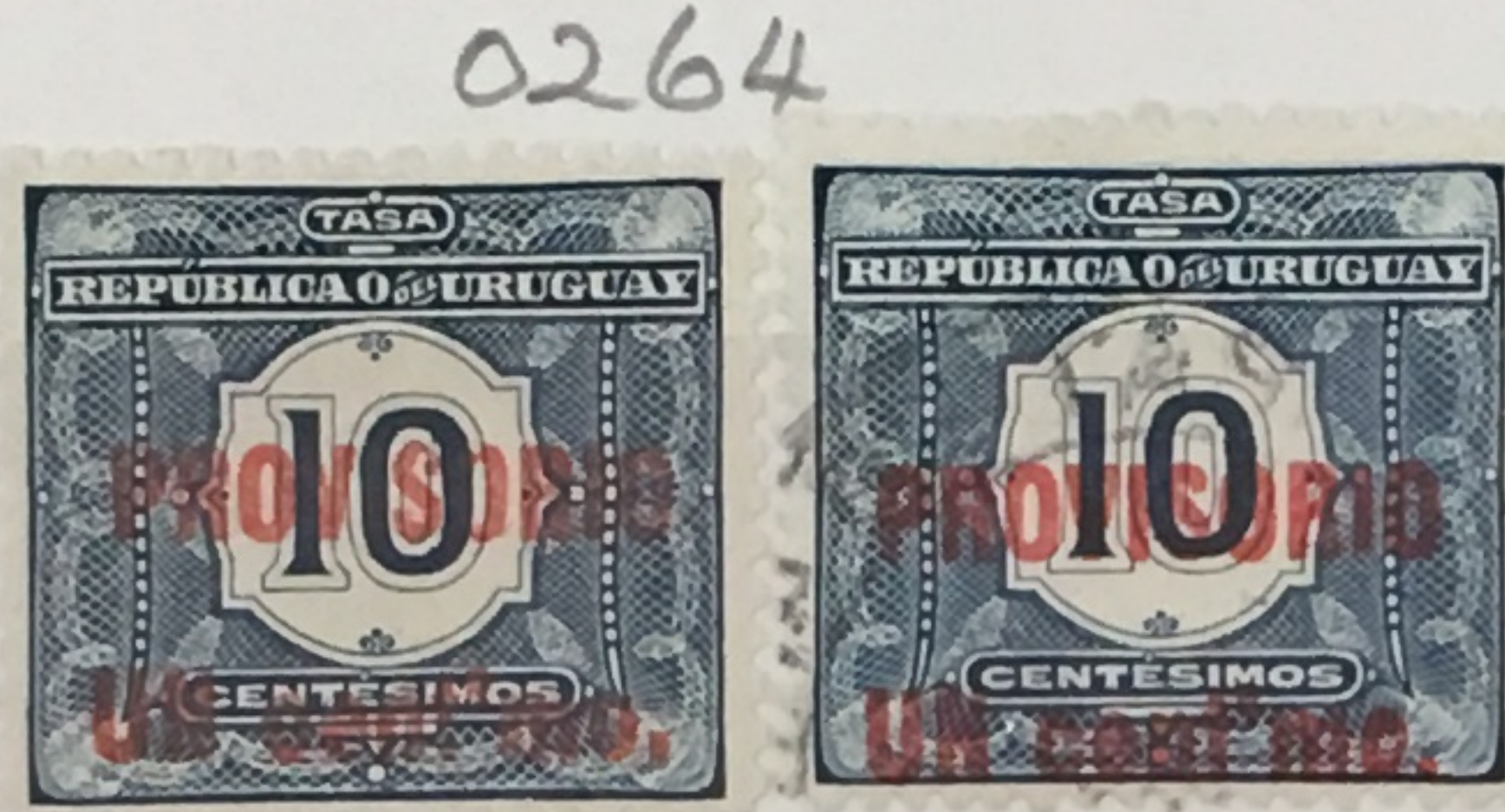
26

260a



2

0263



0264



25



7



286

287

0288

0289



316 316a 317 317a



334

D335

D336

D337

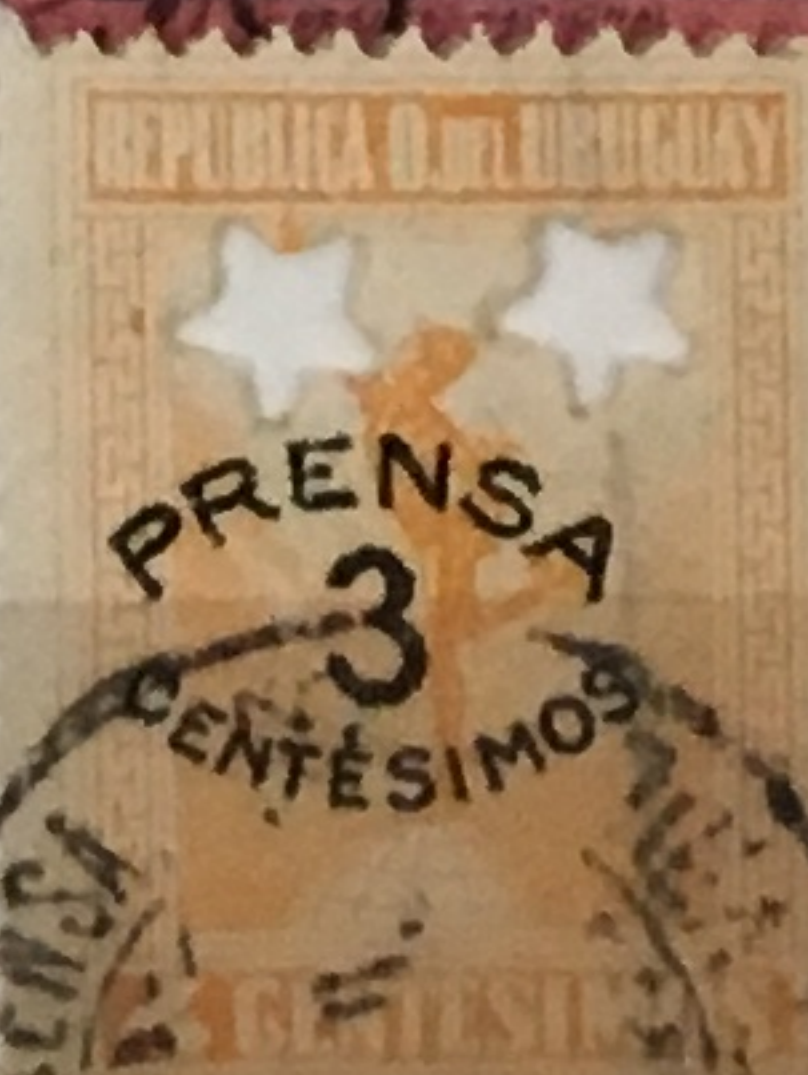
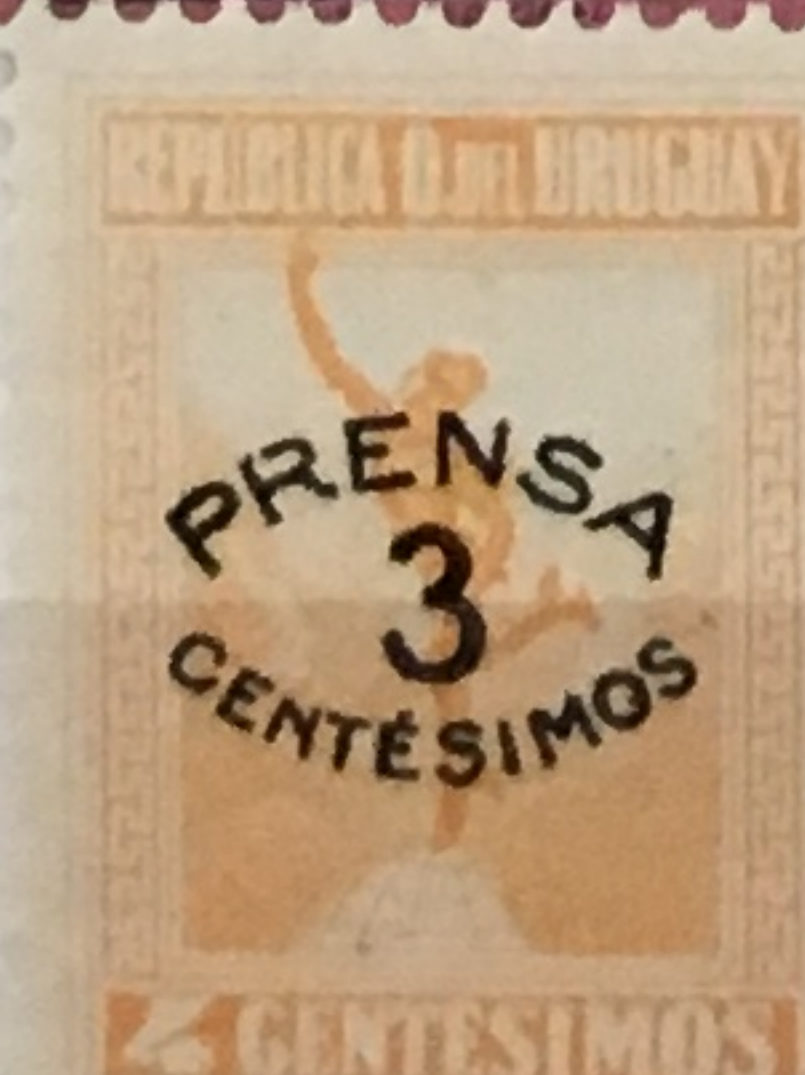
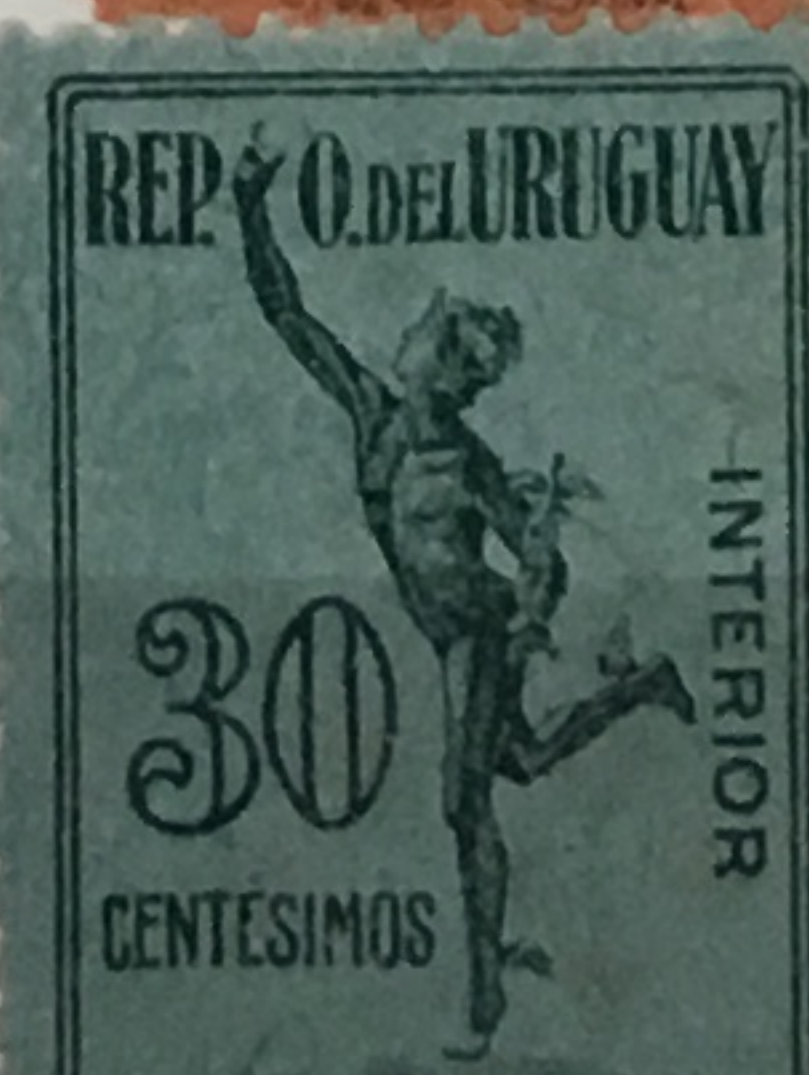
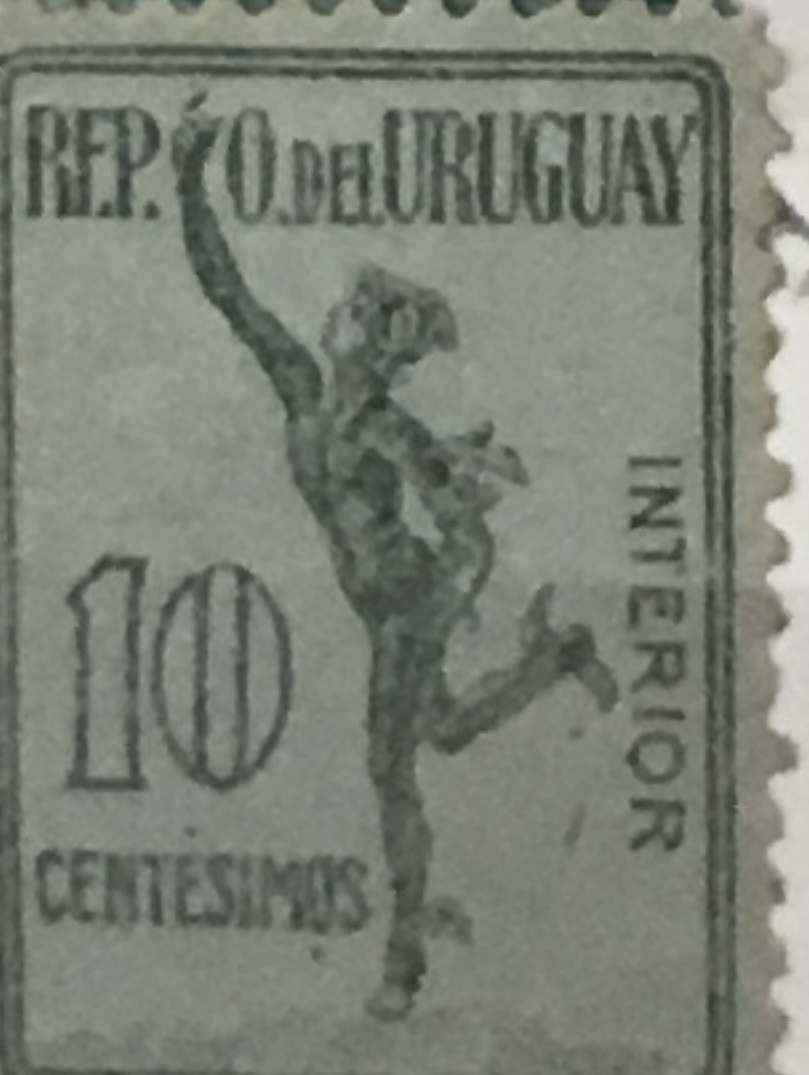
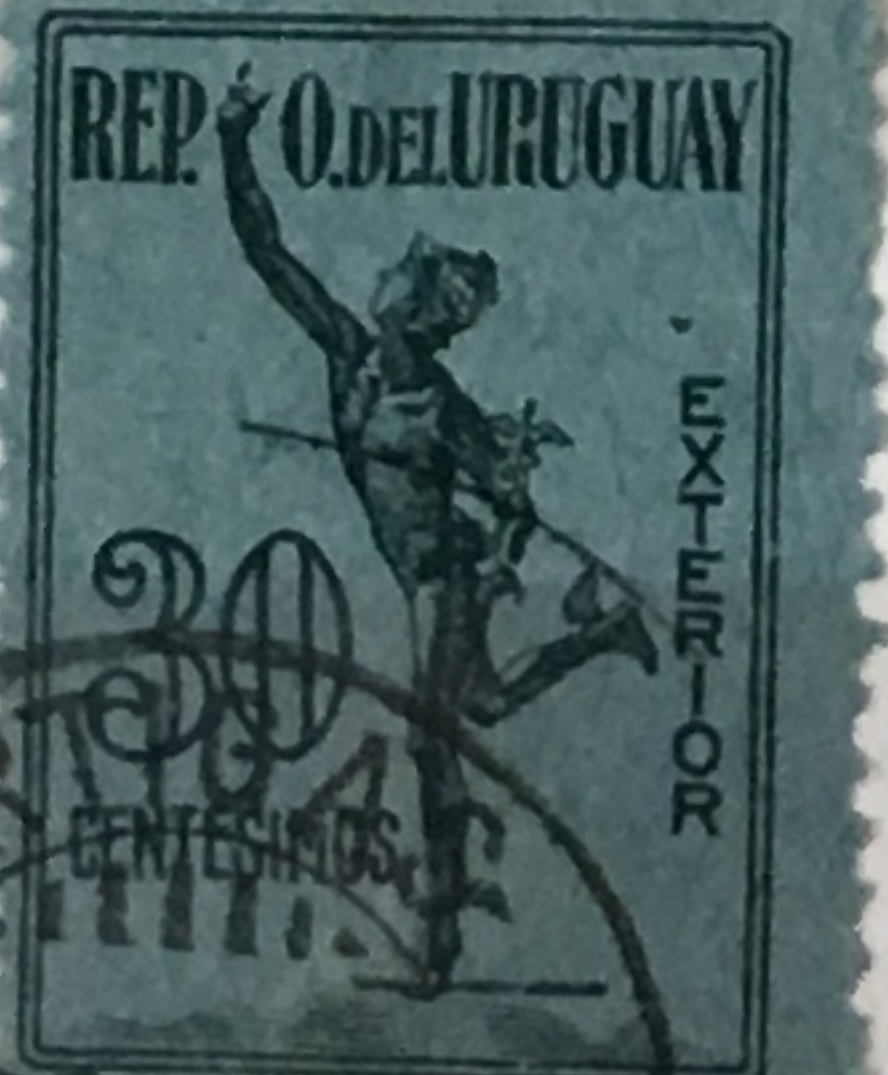
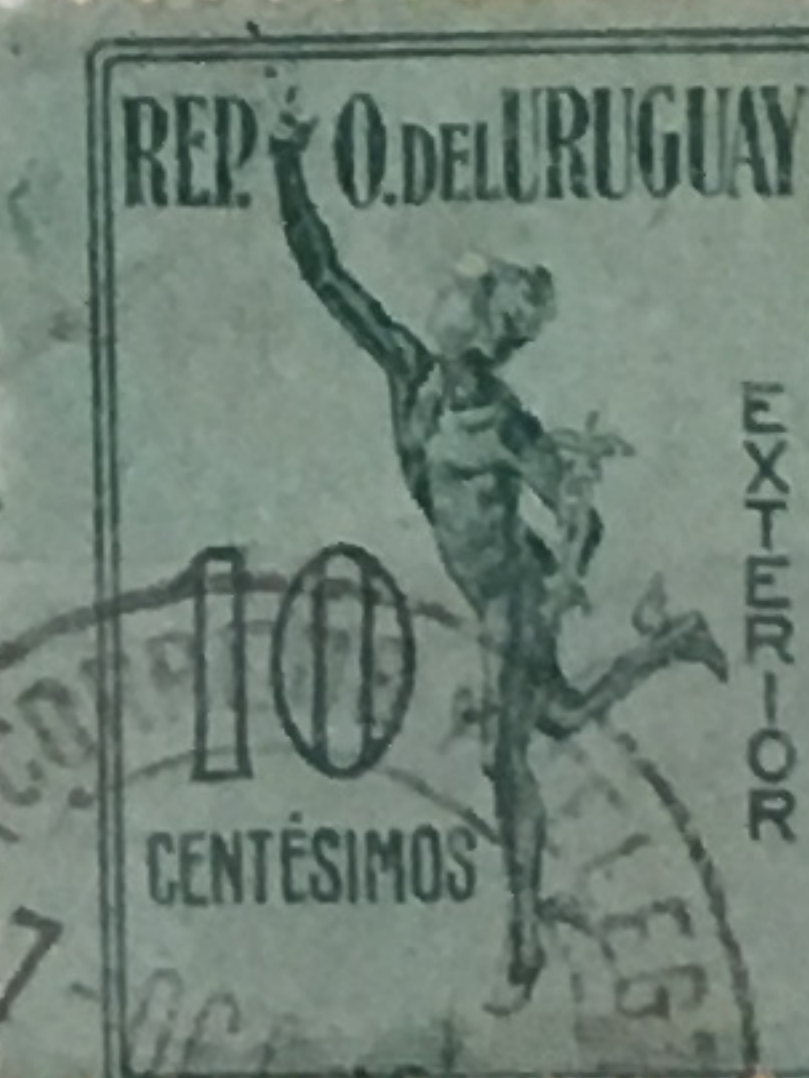
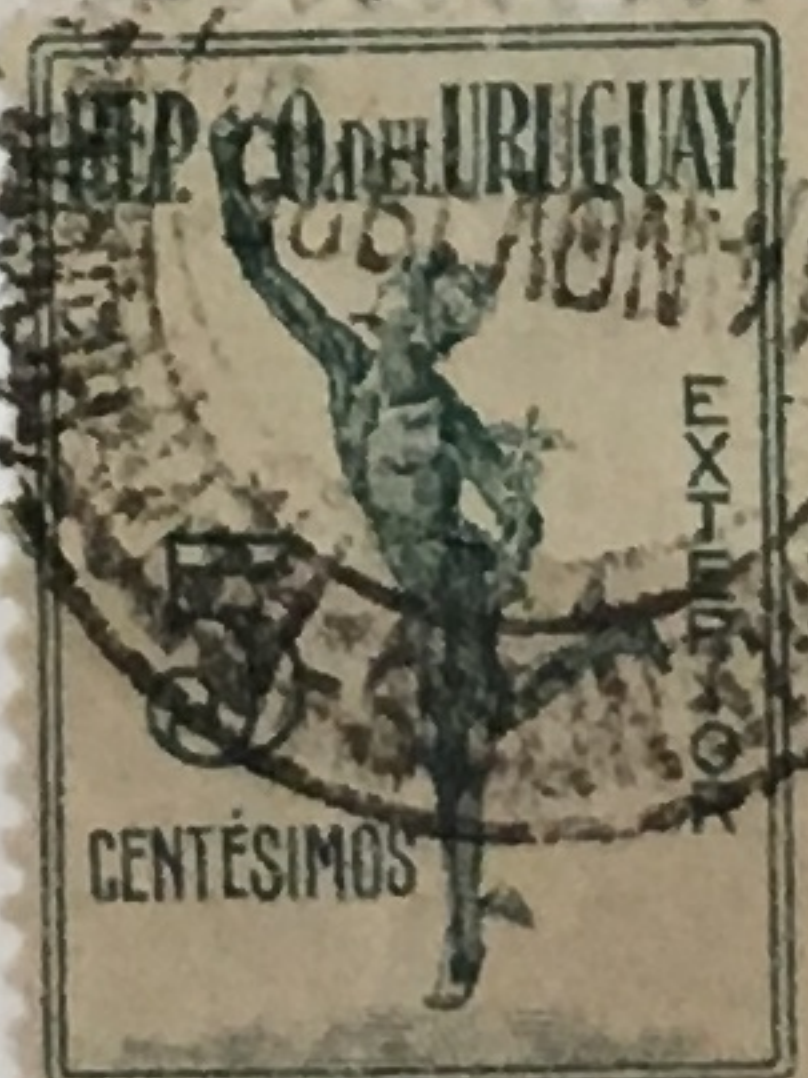
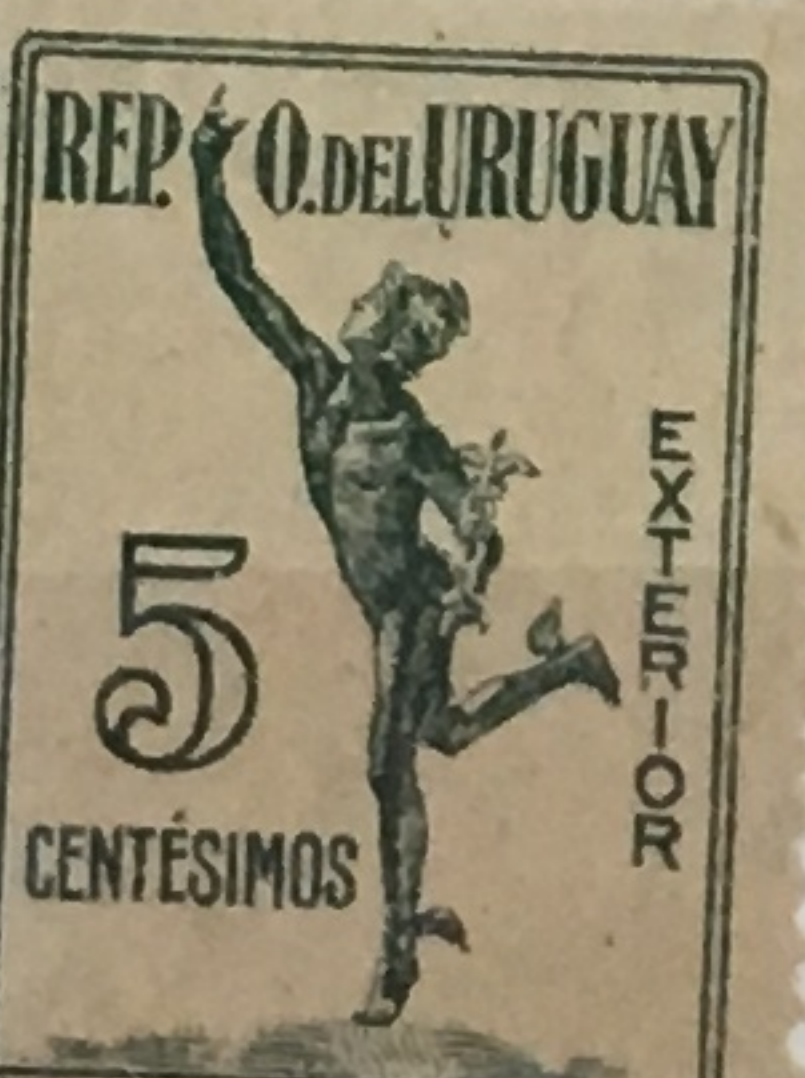
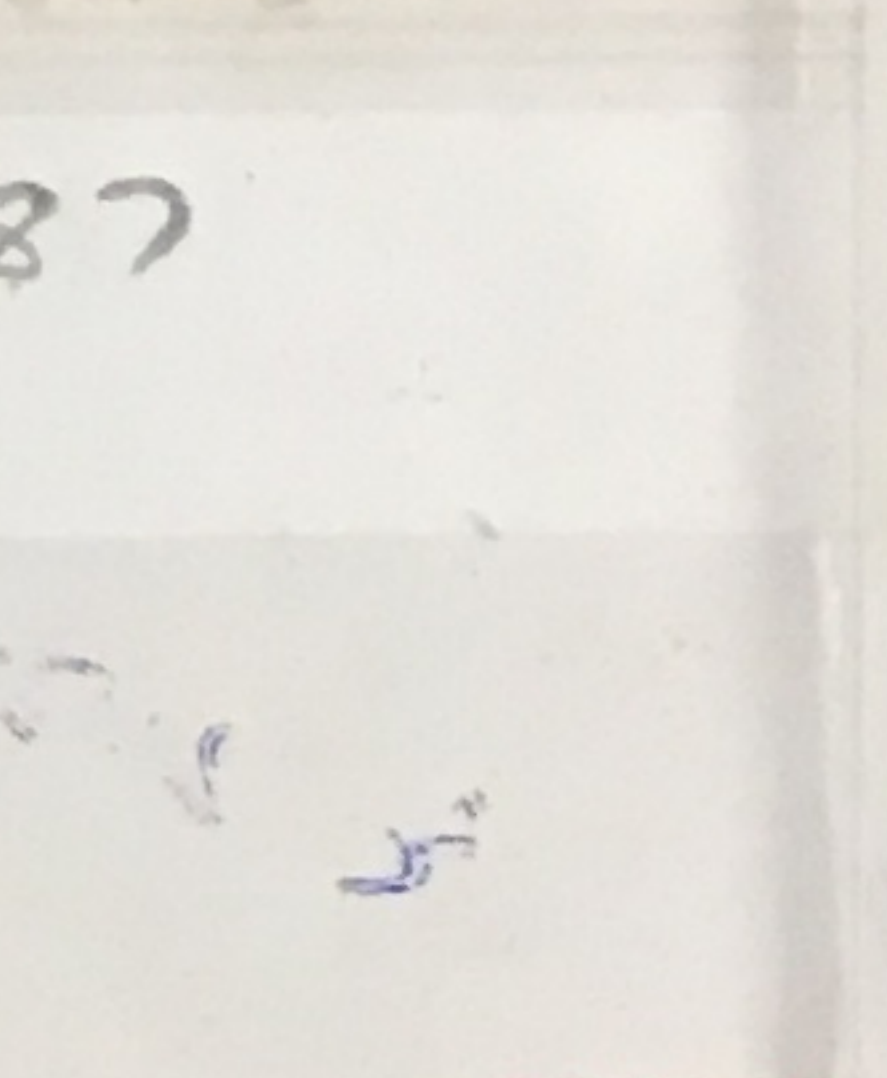
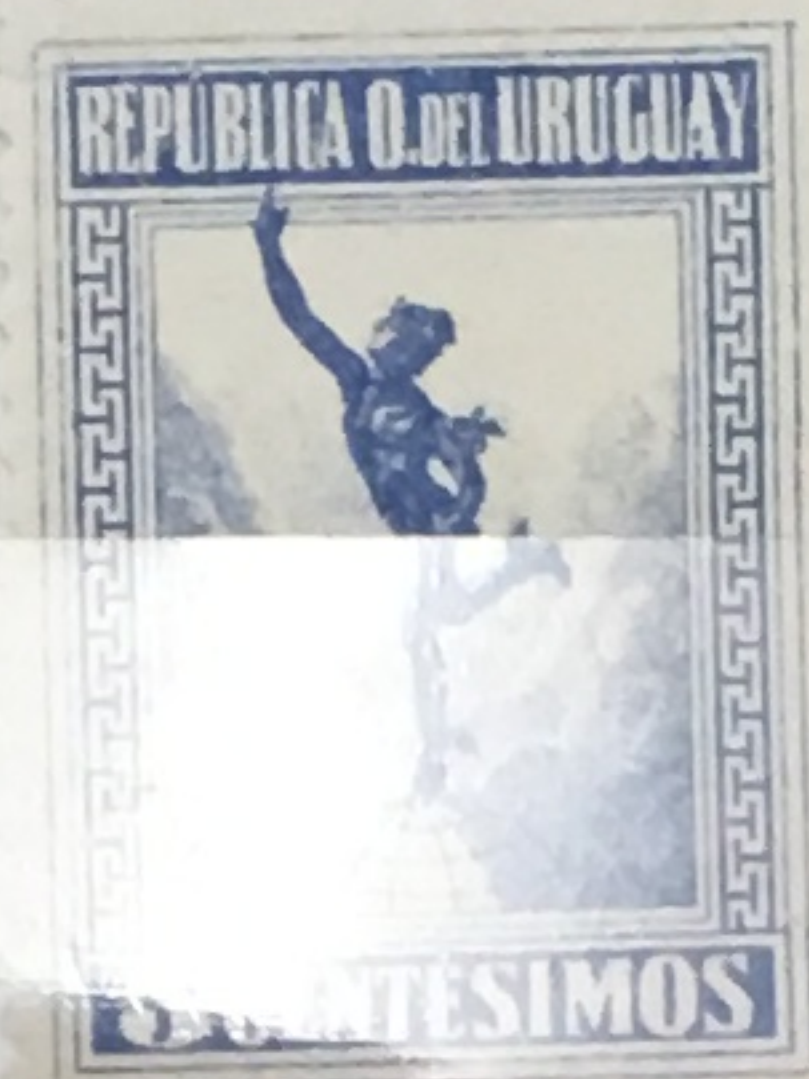
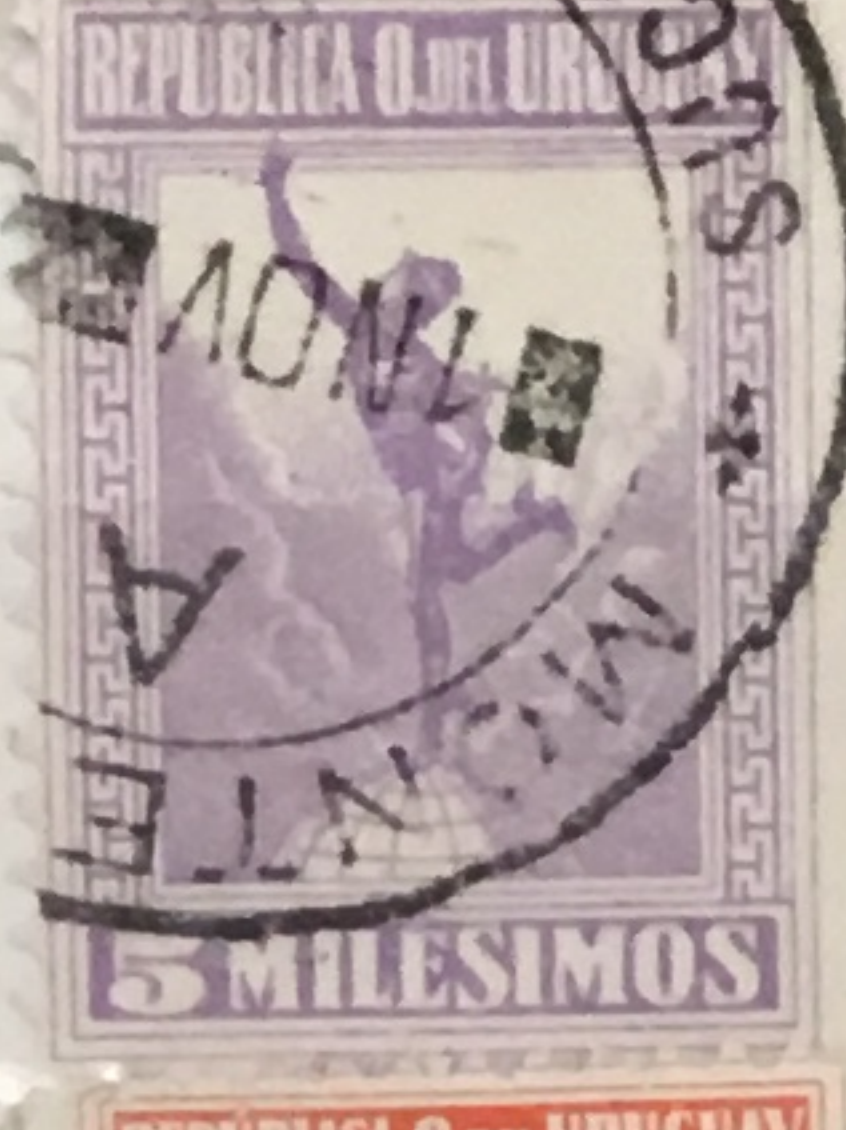


0145

0368

0371

0365a/367a/371a



P402

P403

P400

P401

P404



D405

D405a

D406



08

D409



4



E417



421



421a



426

427

428

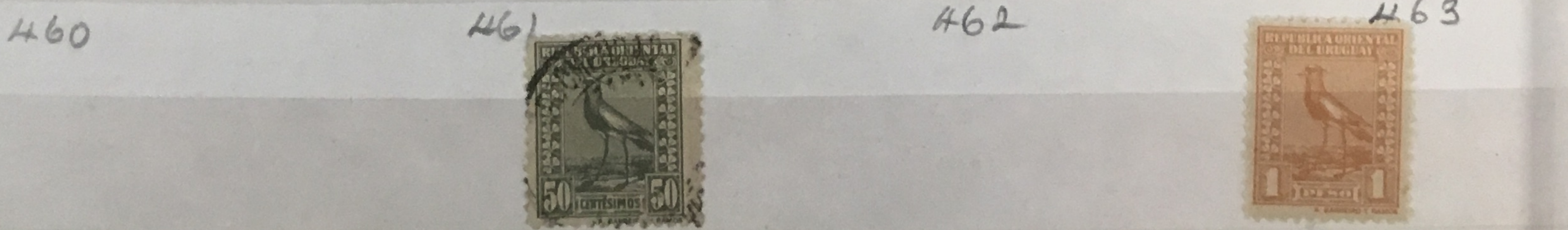


430

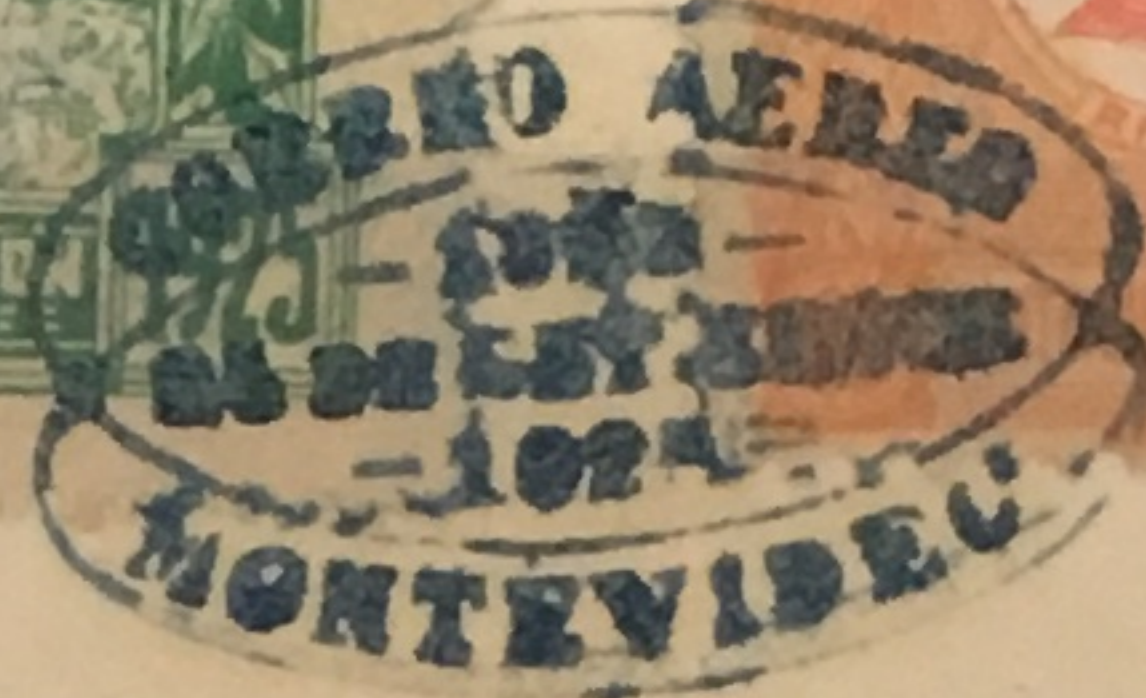
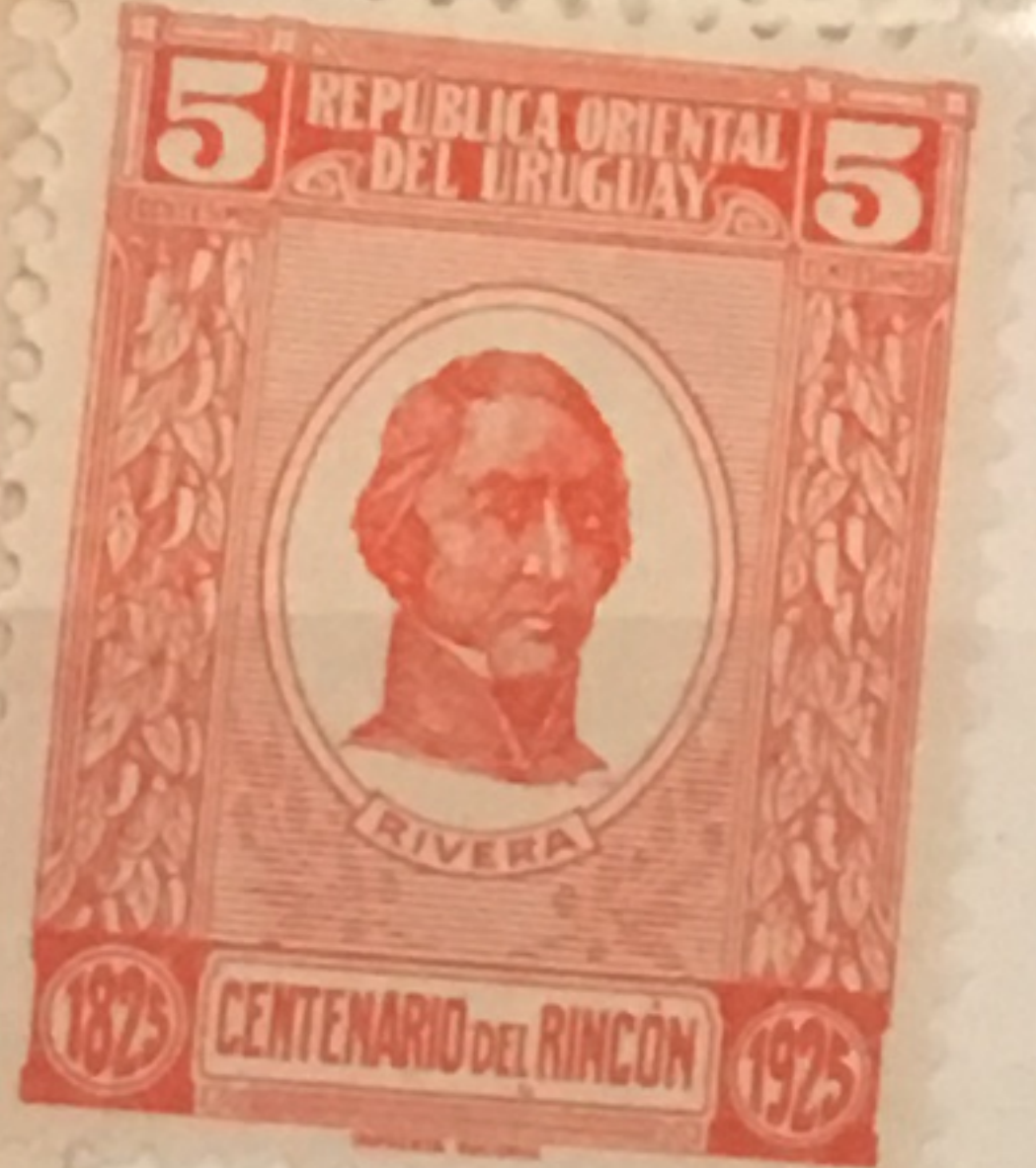
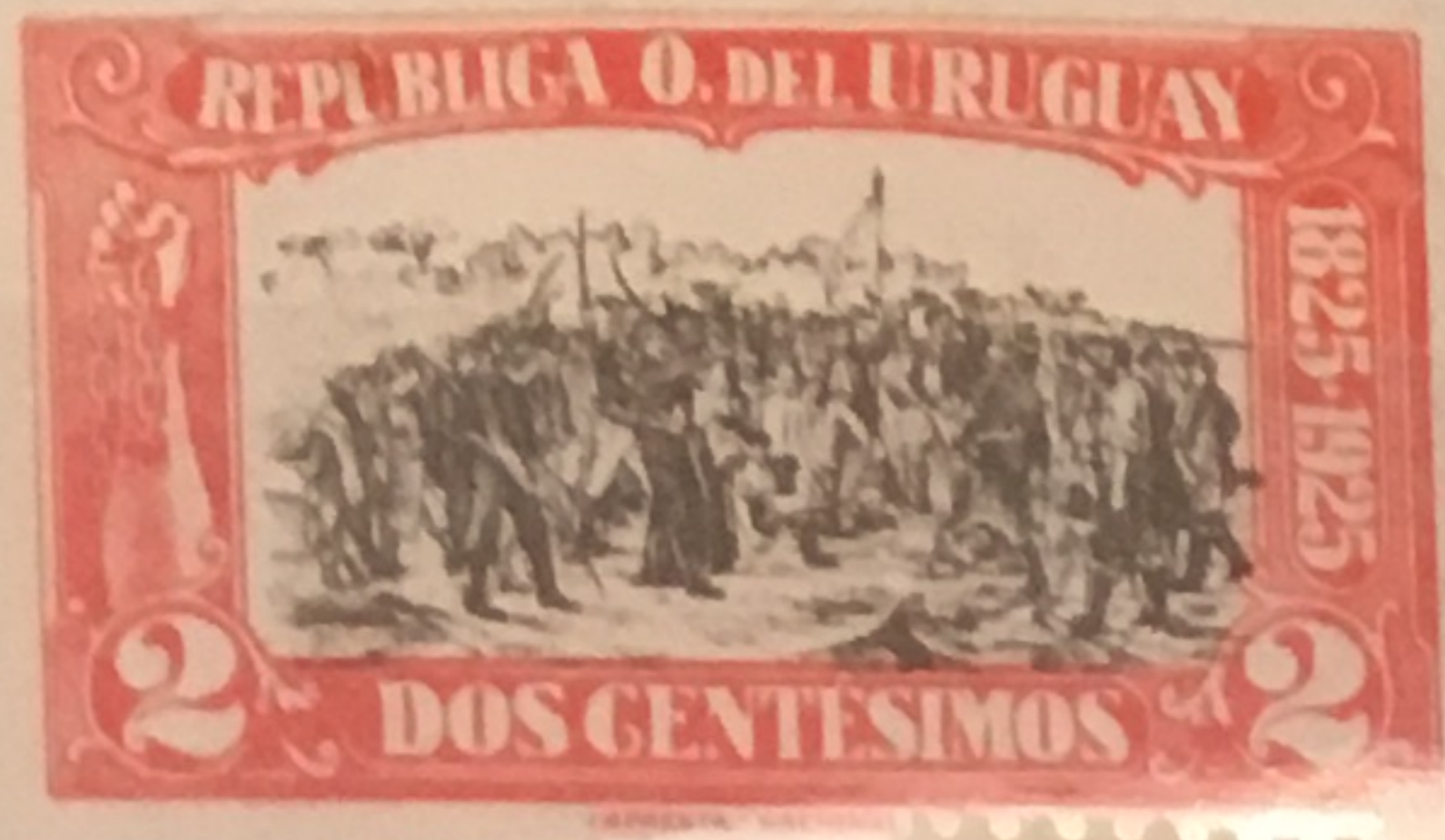
431

432

433



460 461 462 463 463a 464 464a 465



472

473

474

475



476

476a

477

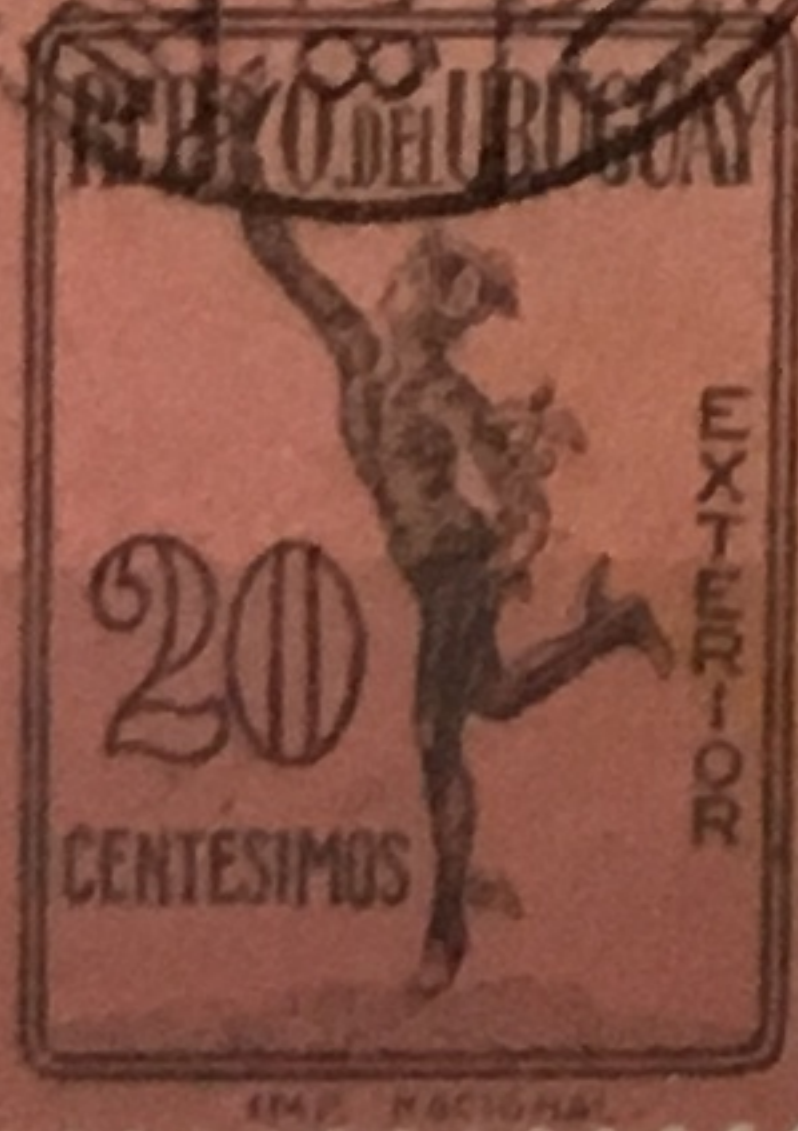
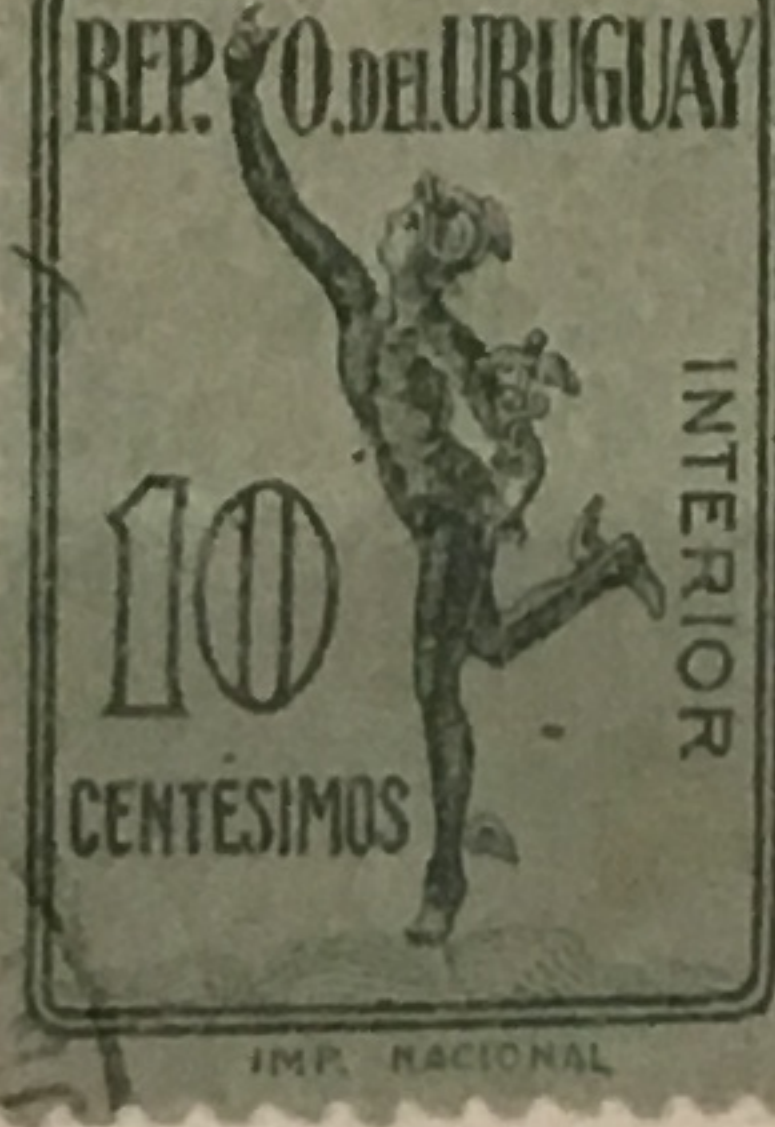
477a



478a

479

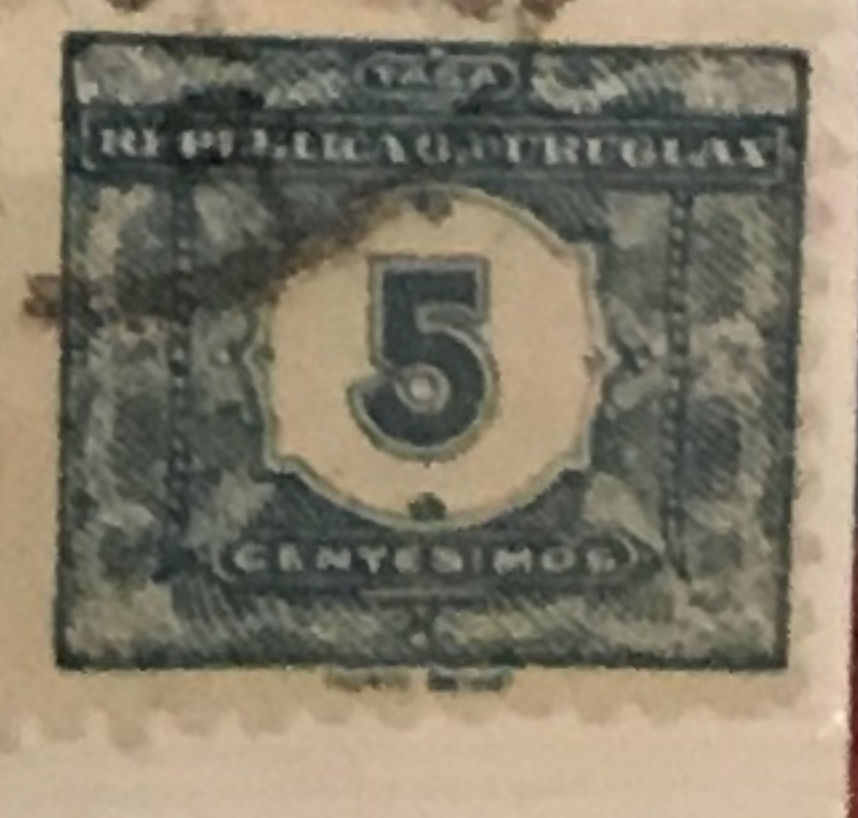
479a



P486

P487

P488



P489

D490

D491

D492



D493

D494

495



P518

N519

N520

N521



P522



P525

P526



P527



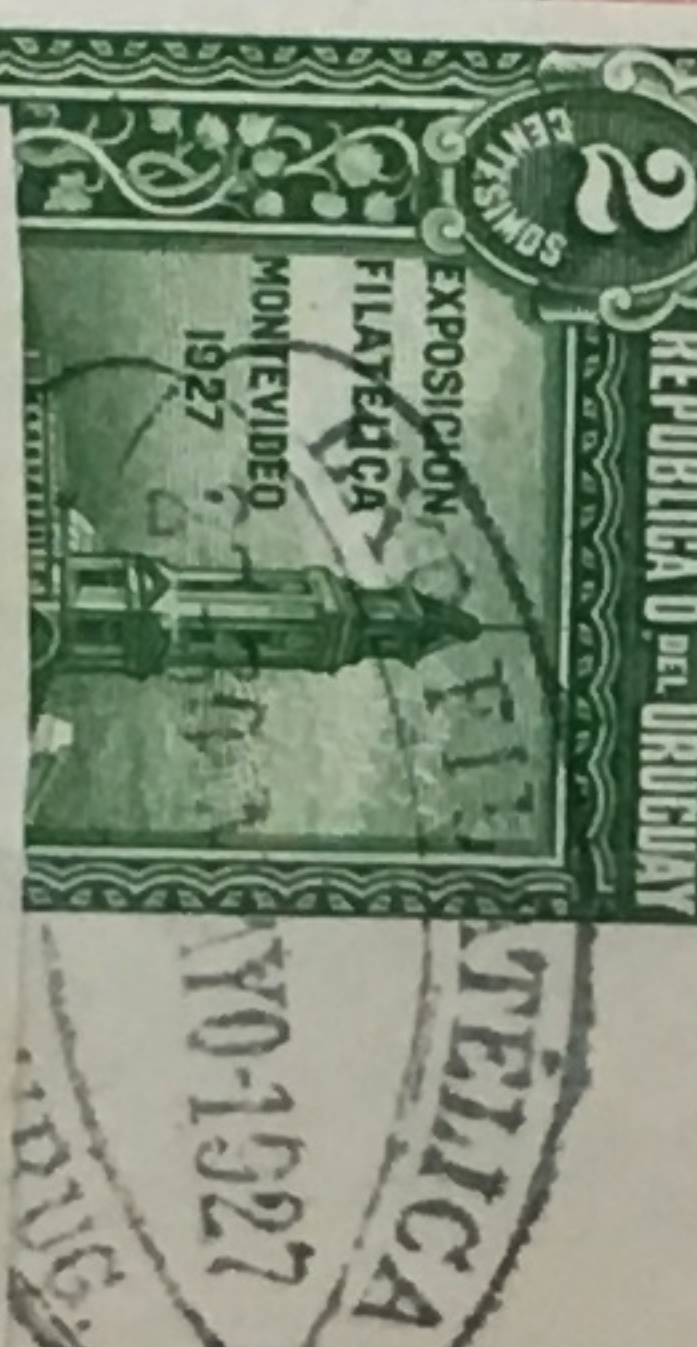
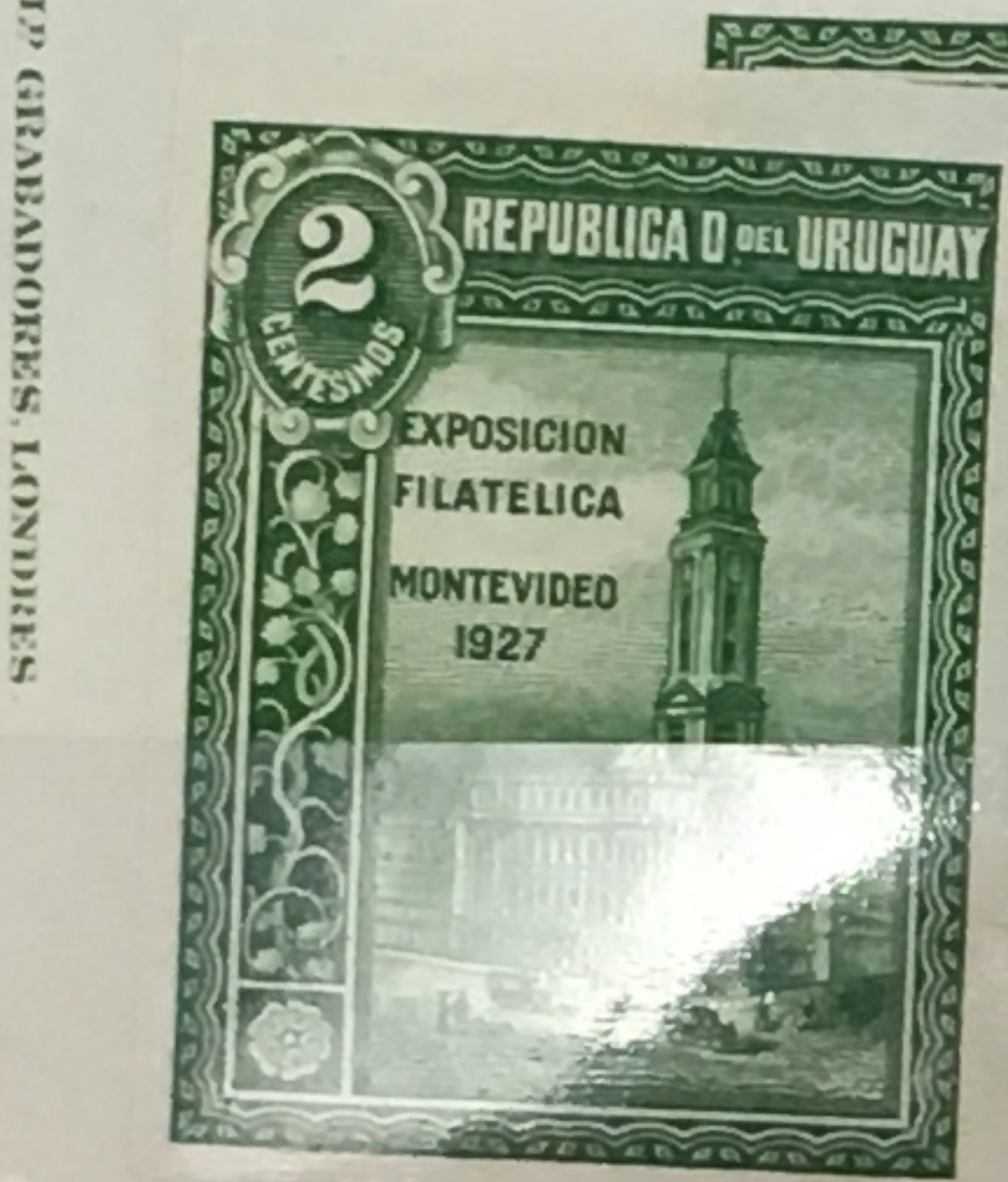
528a



529



531



532



534



535



536



537



39

540

54



542



543



544



545



547

548

549

550

551



553

55

56



557

558

559

560

561



567

568

569



571

572

573



574

6



50
C1
+
C2

50
350
350

39
-3

56
C14
to
C25

56
358-
350

391
-393



5
5
5
1
5
5
5
5
5
5
5
5
5
5
58
56

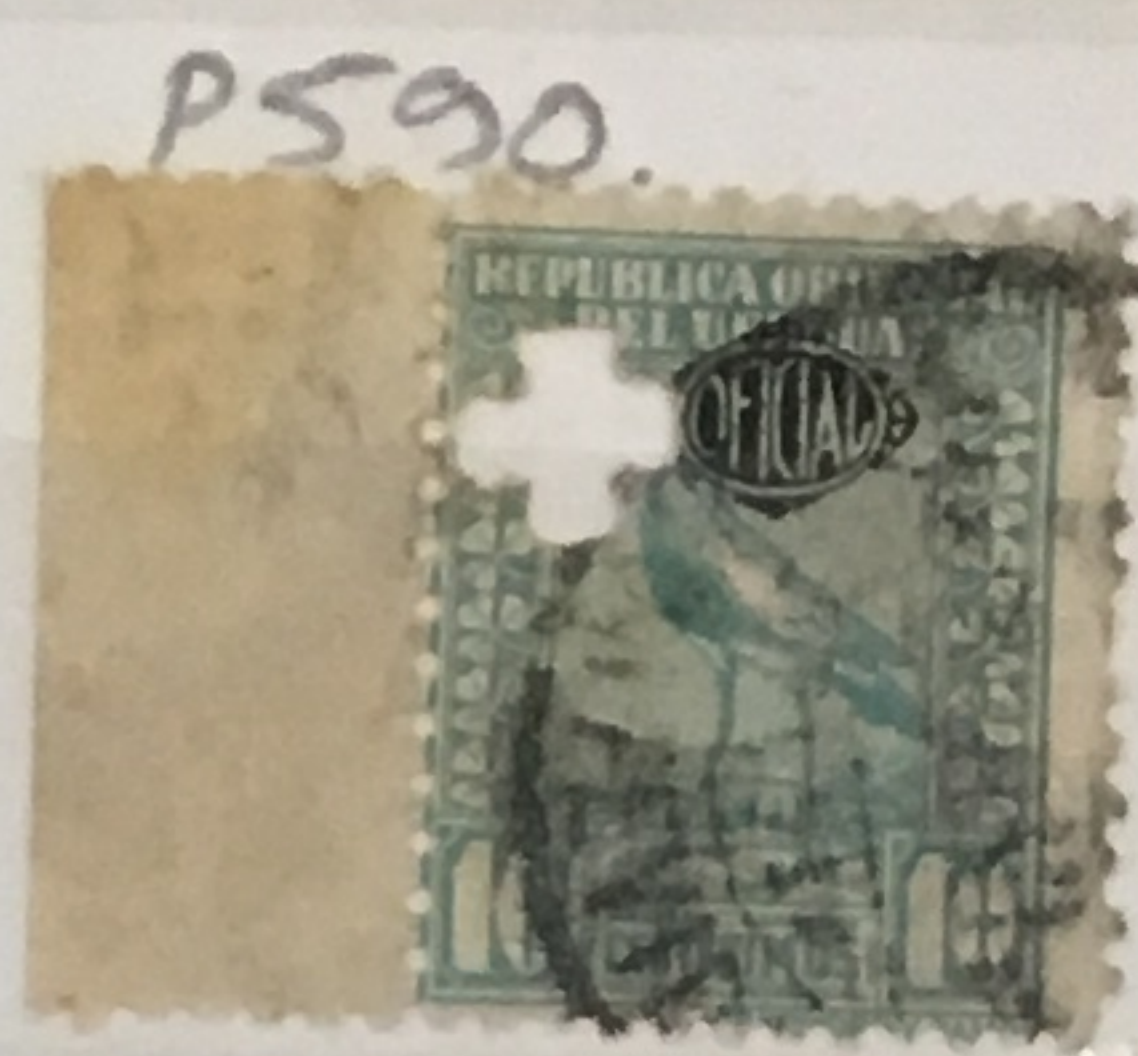
19
58
58
583

151
1928
Im
584
585
586
Pri

492

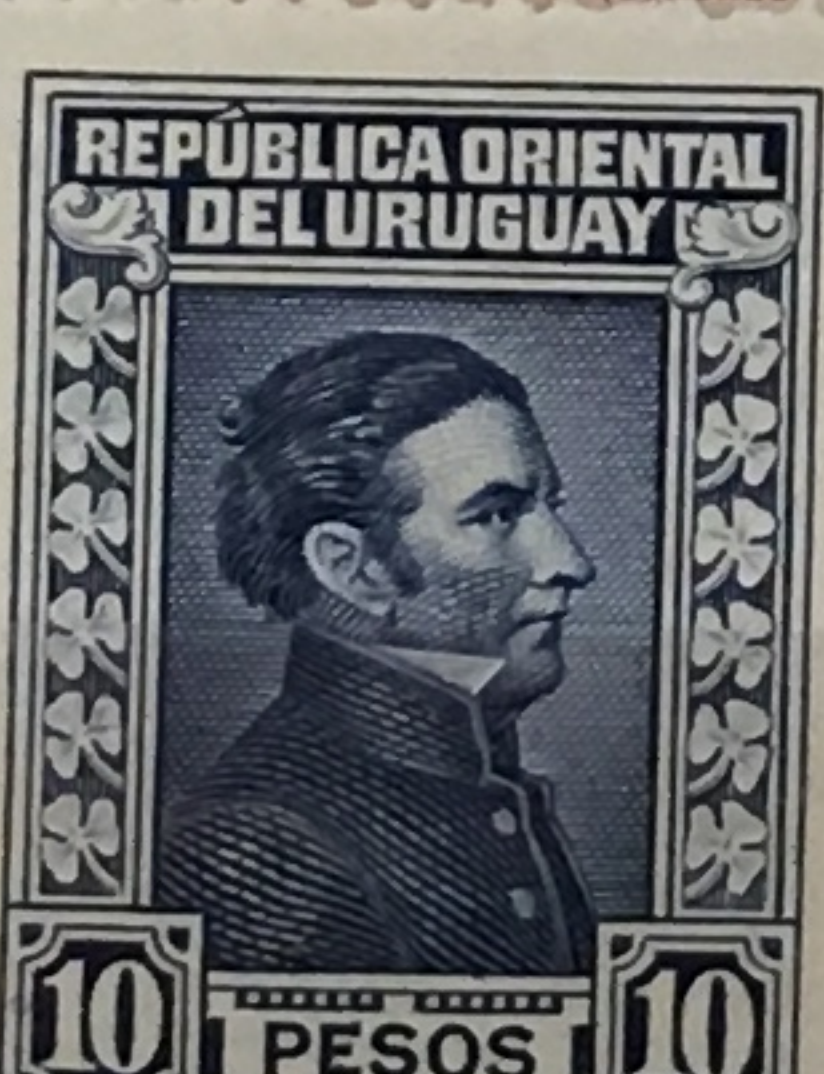
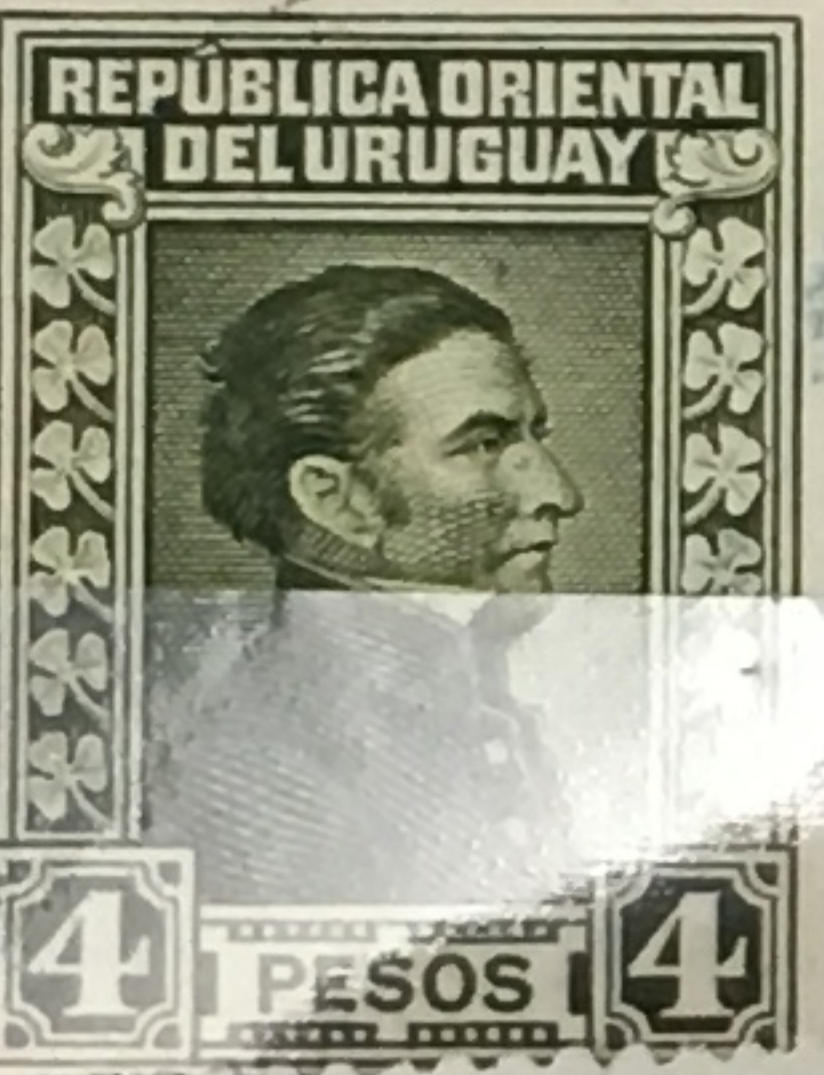
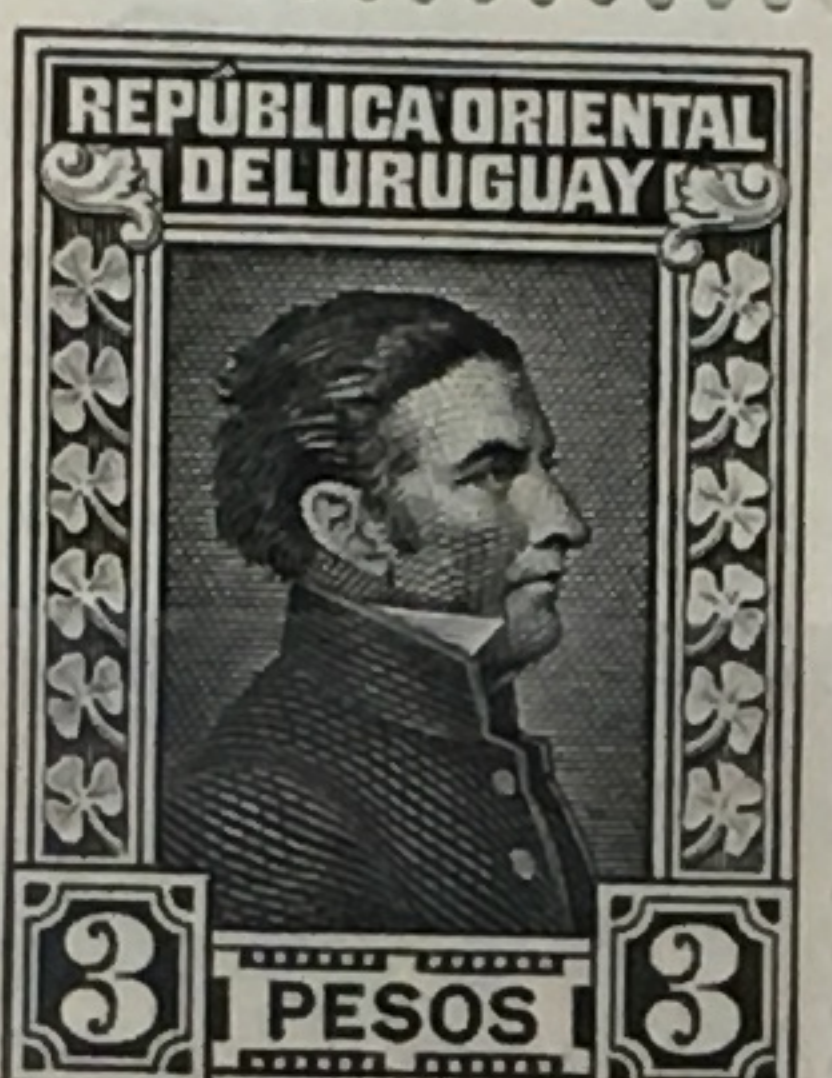
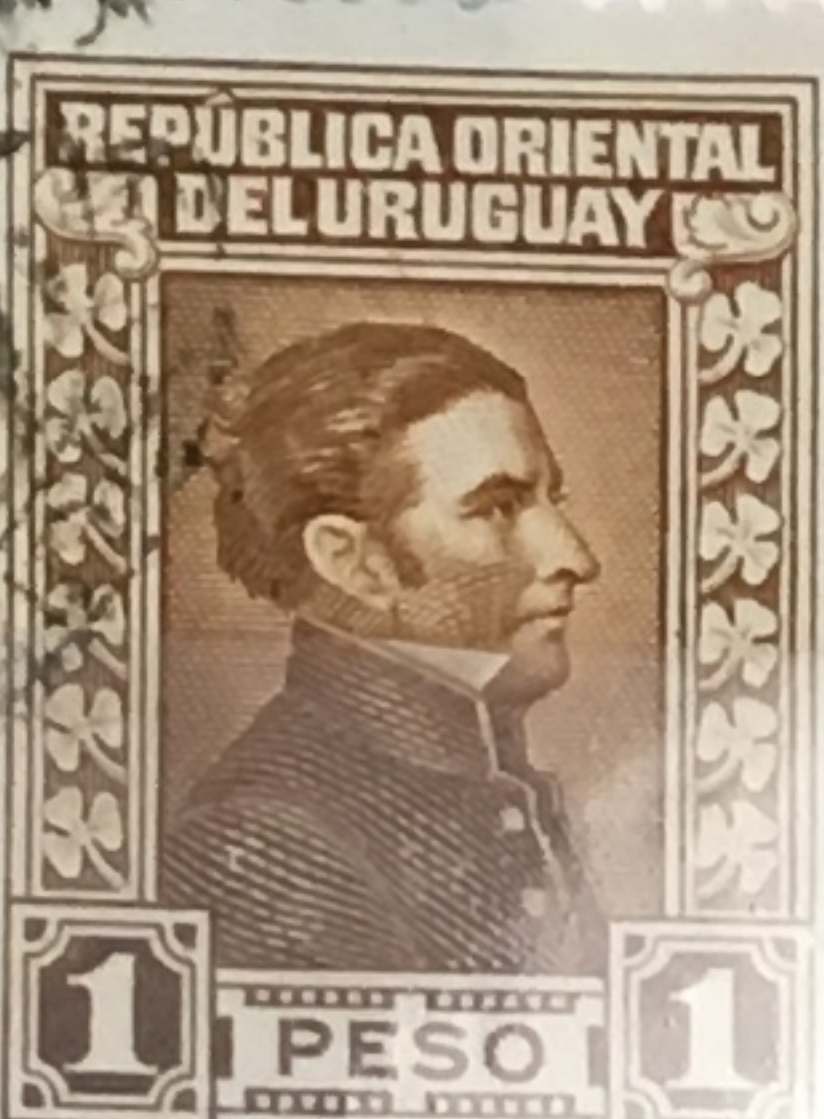
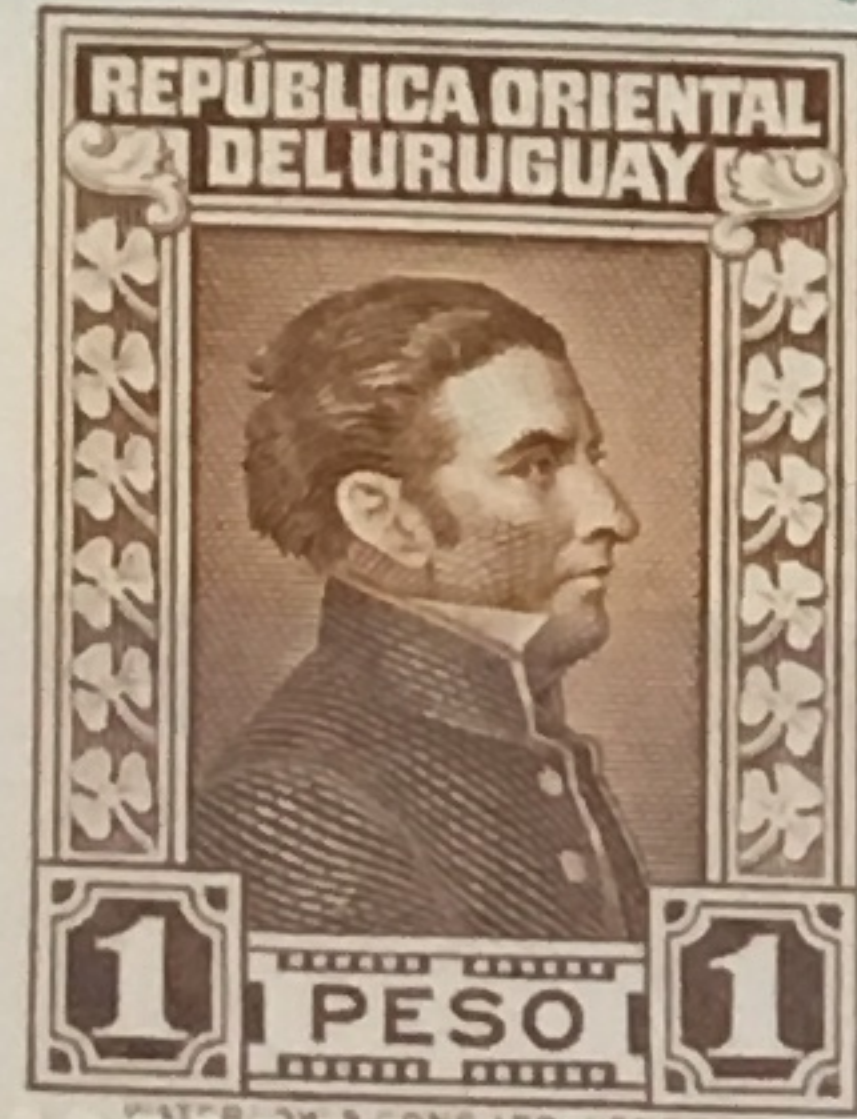


P587



P590

0594



602



P60



08



P608a



P60



P1



P611



22



P616



6



627



629

630



631



632



633



634



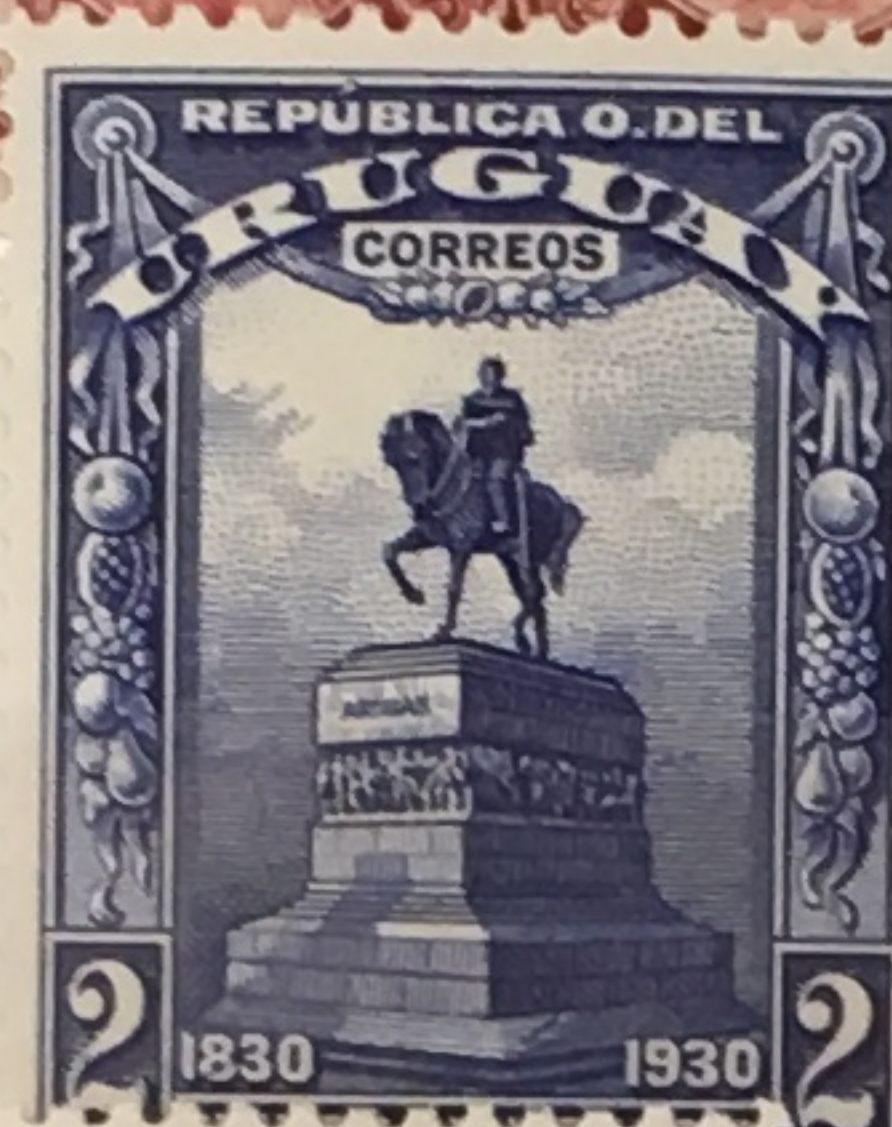
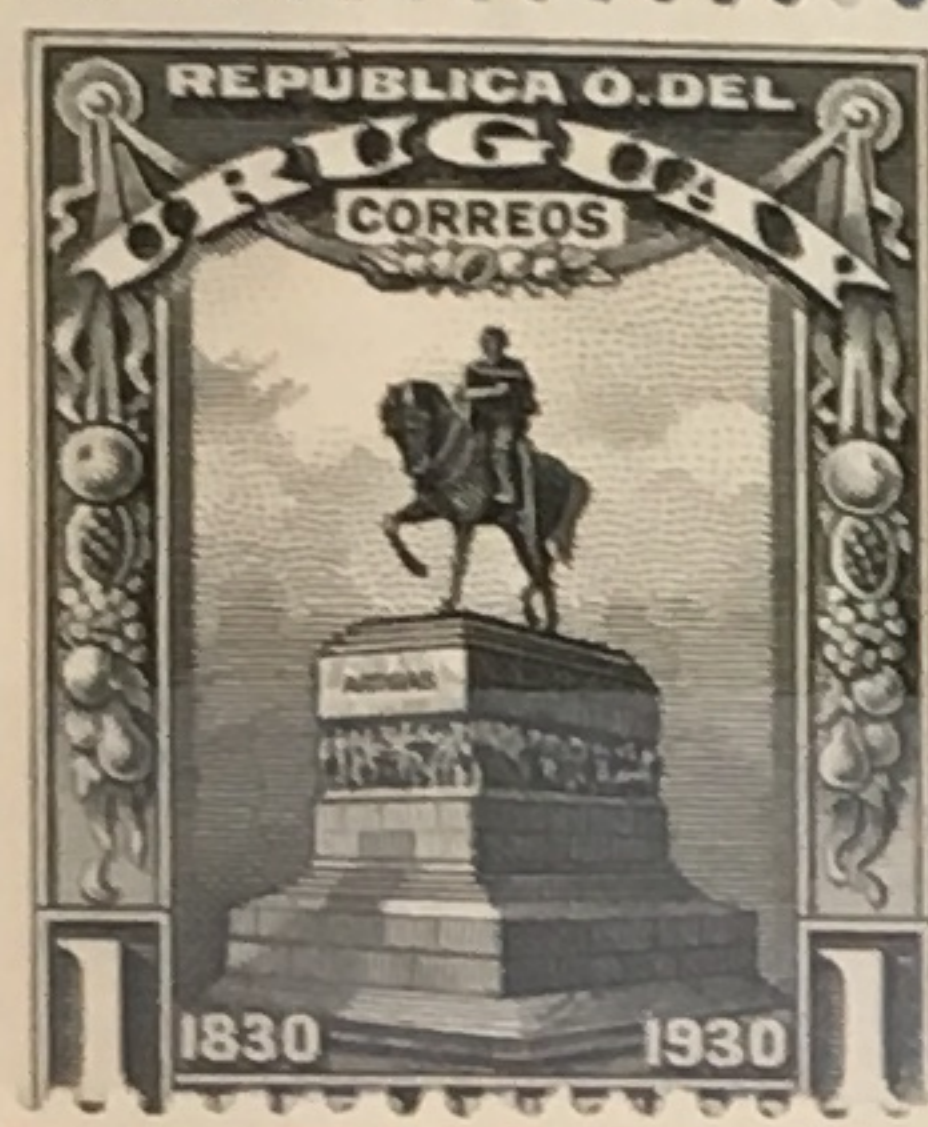
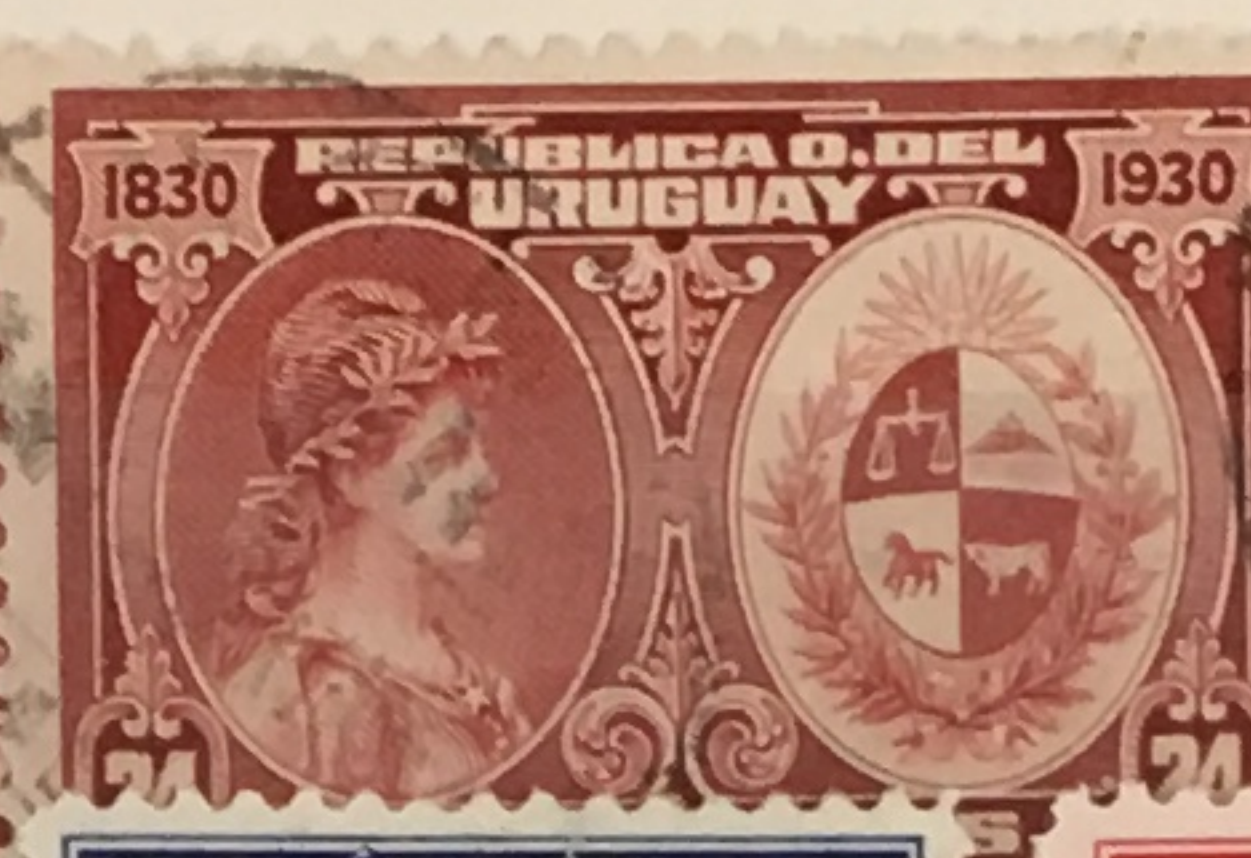
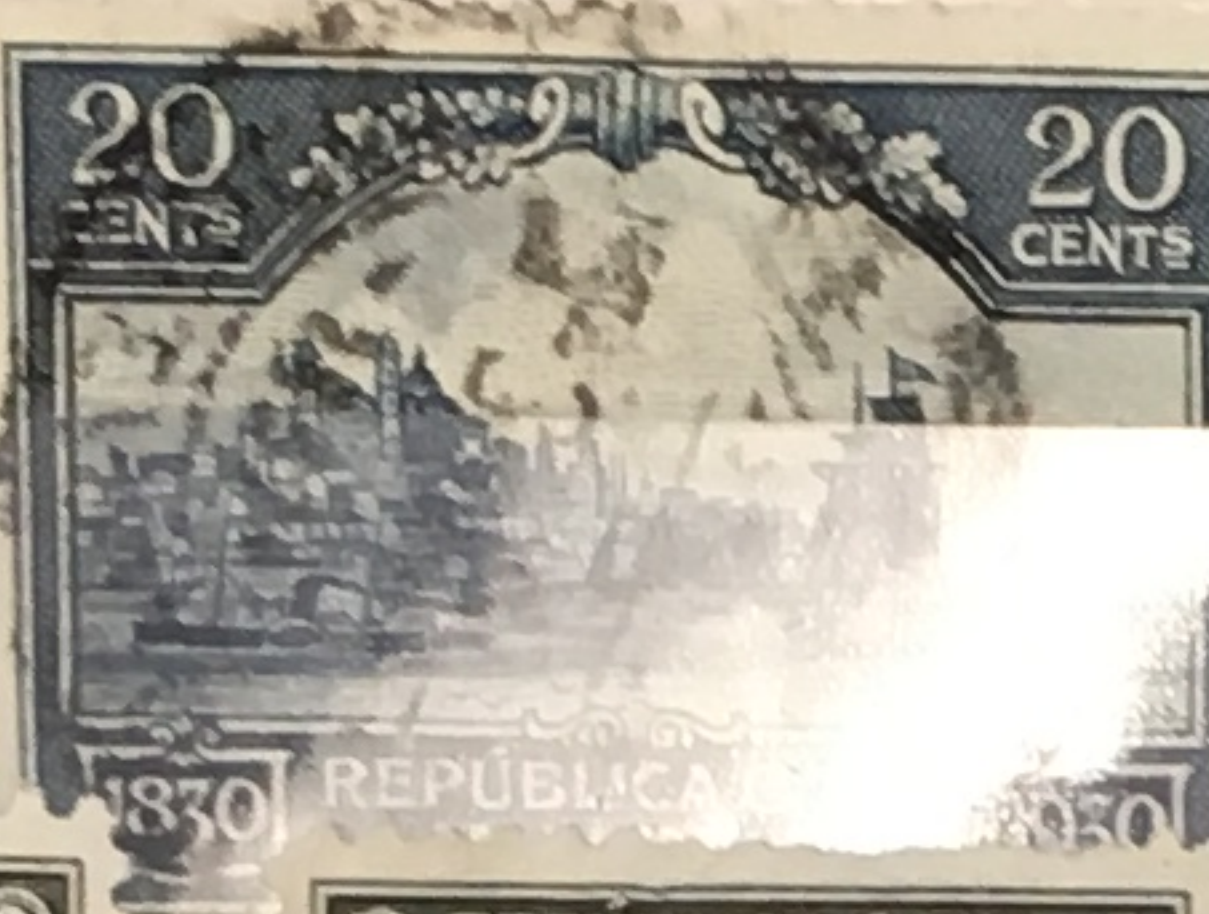
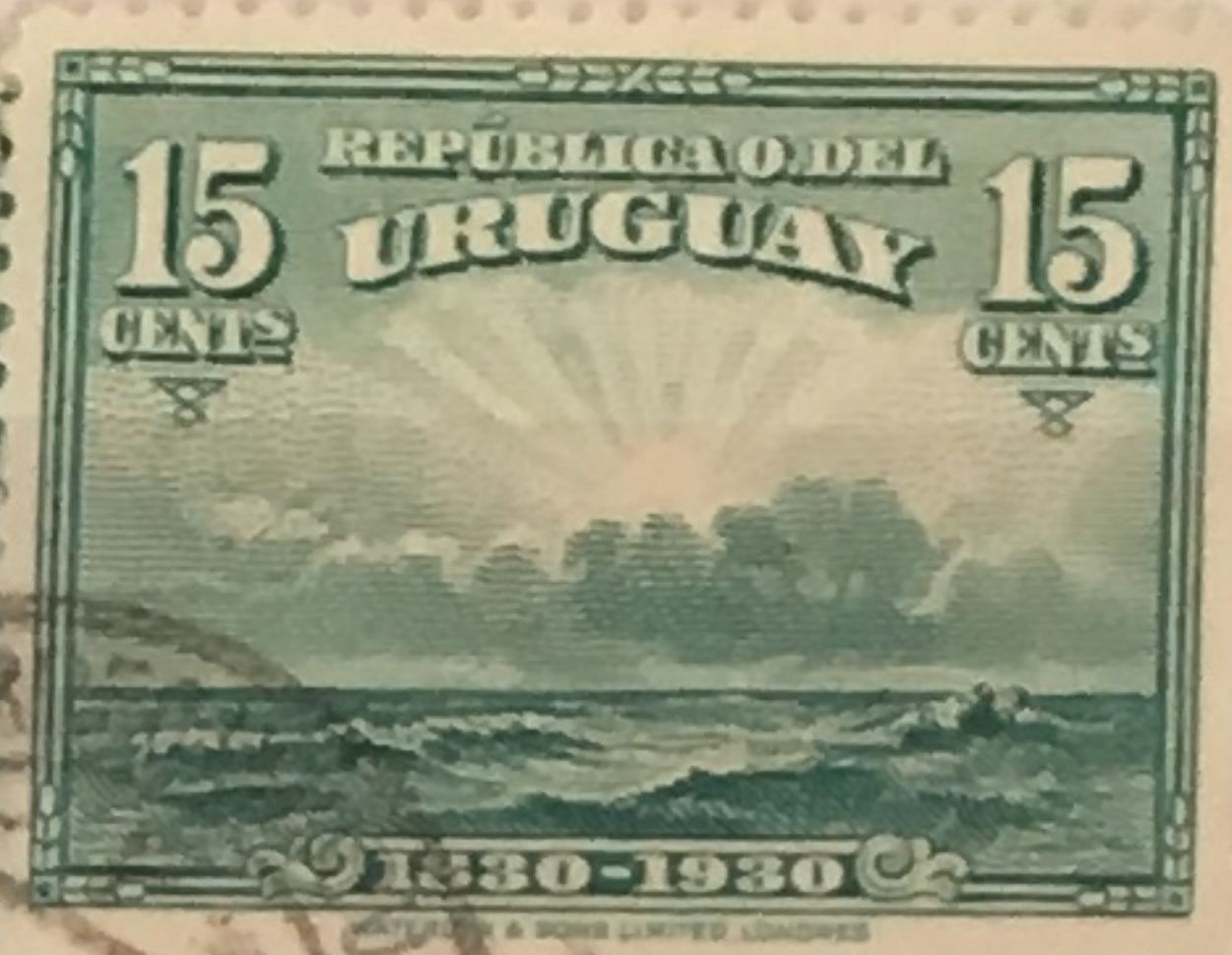
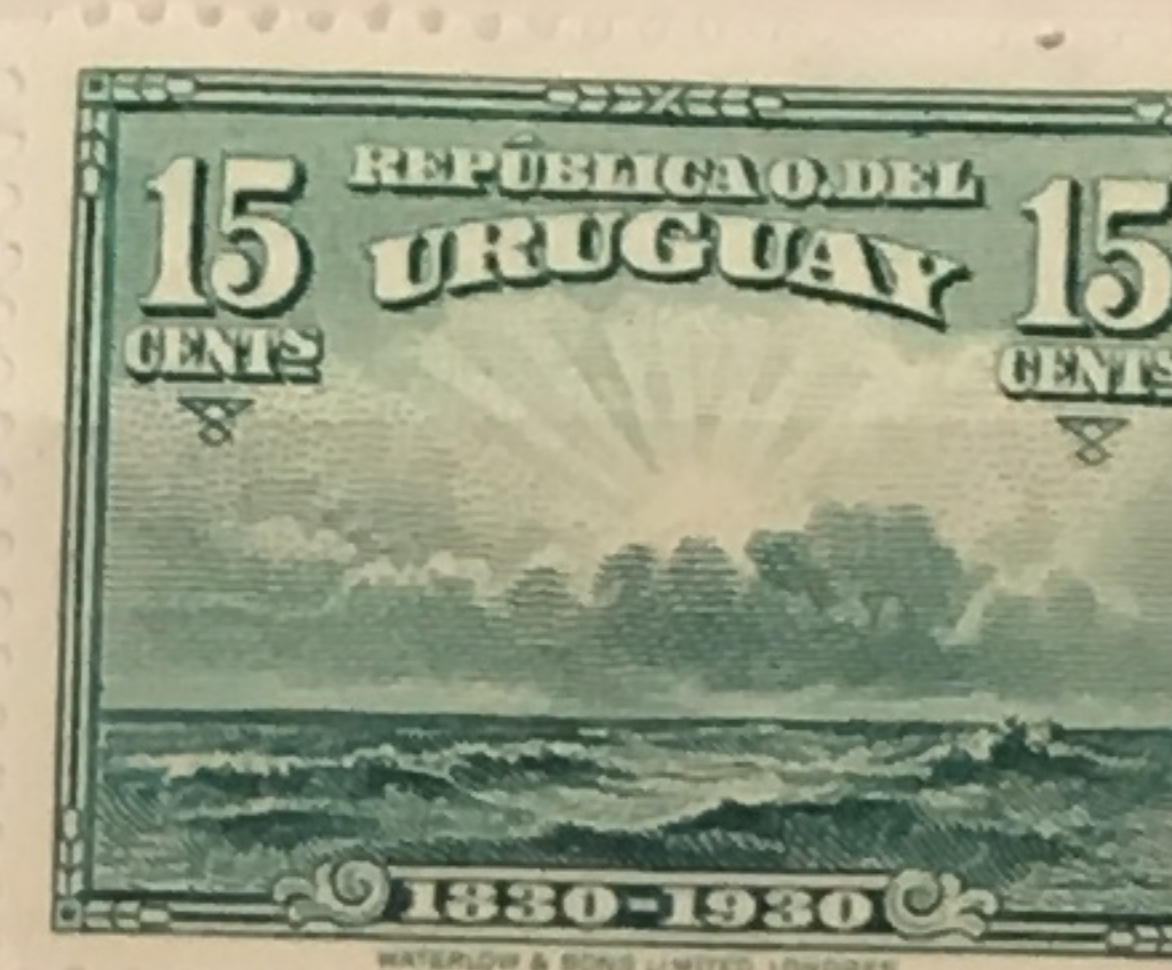
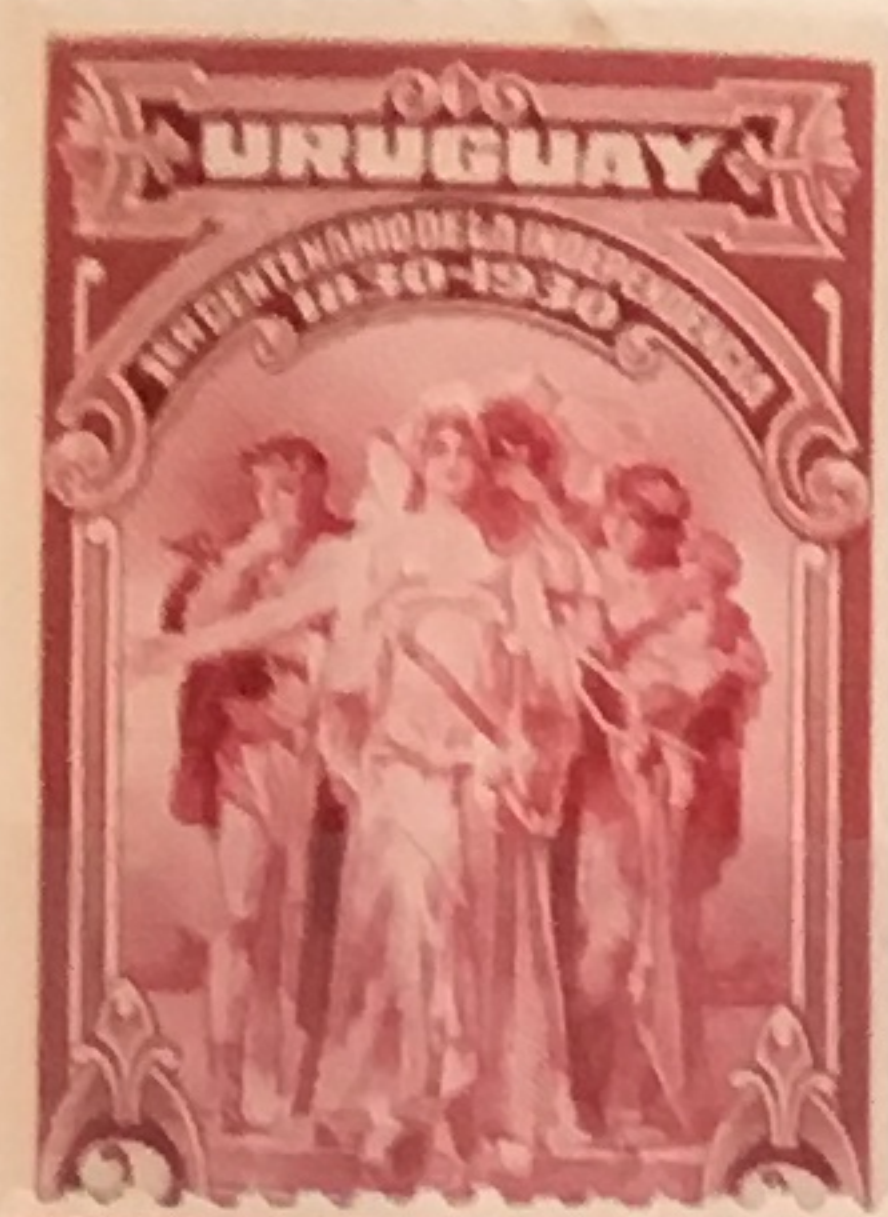
E635



E638

639

640





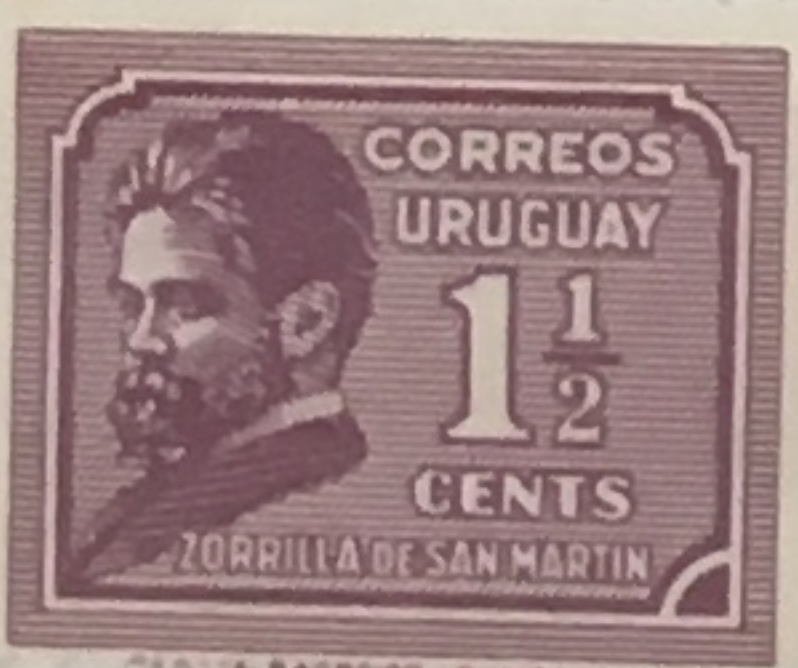
674



676

677

MS 678 see at end.



679



681



682



683

684

685

686



688

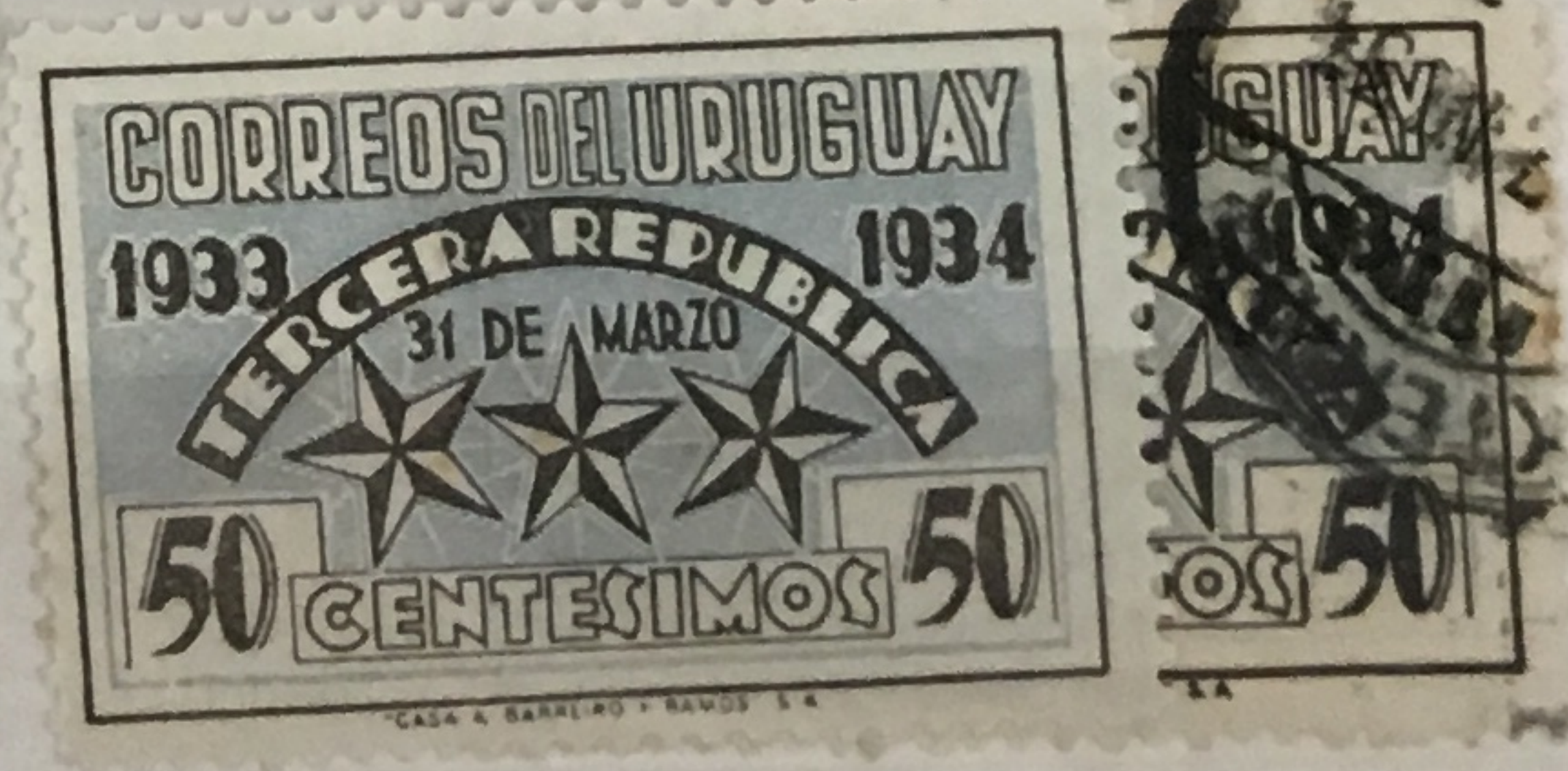
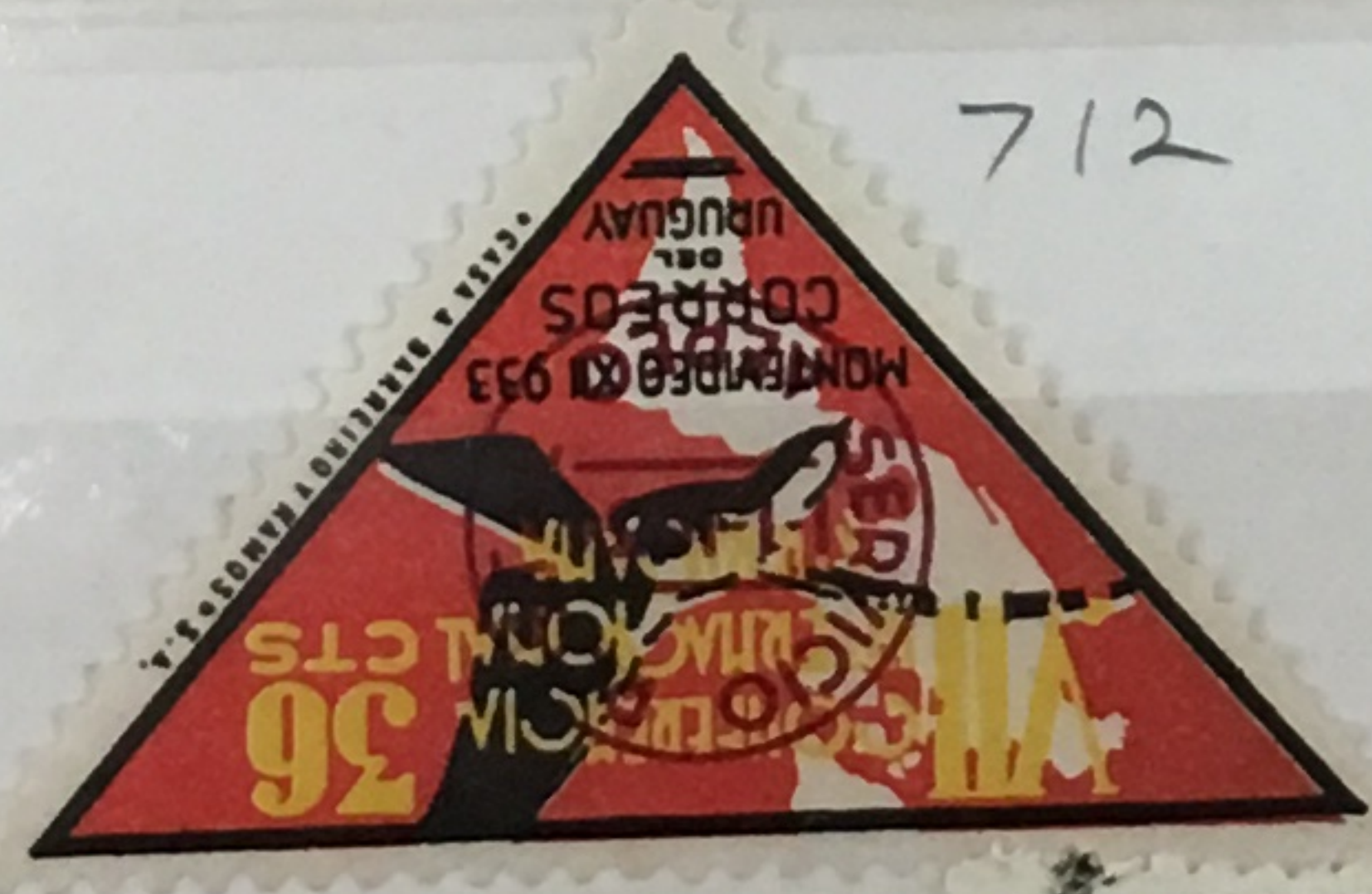
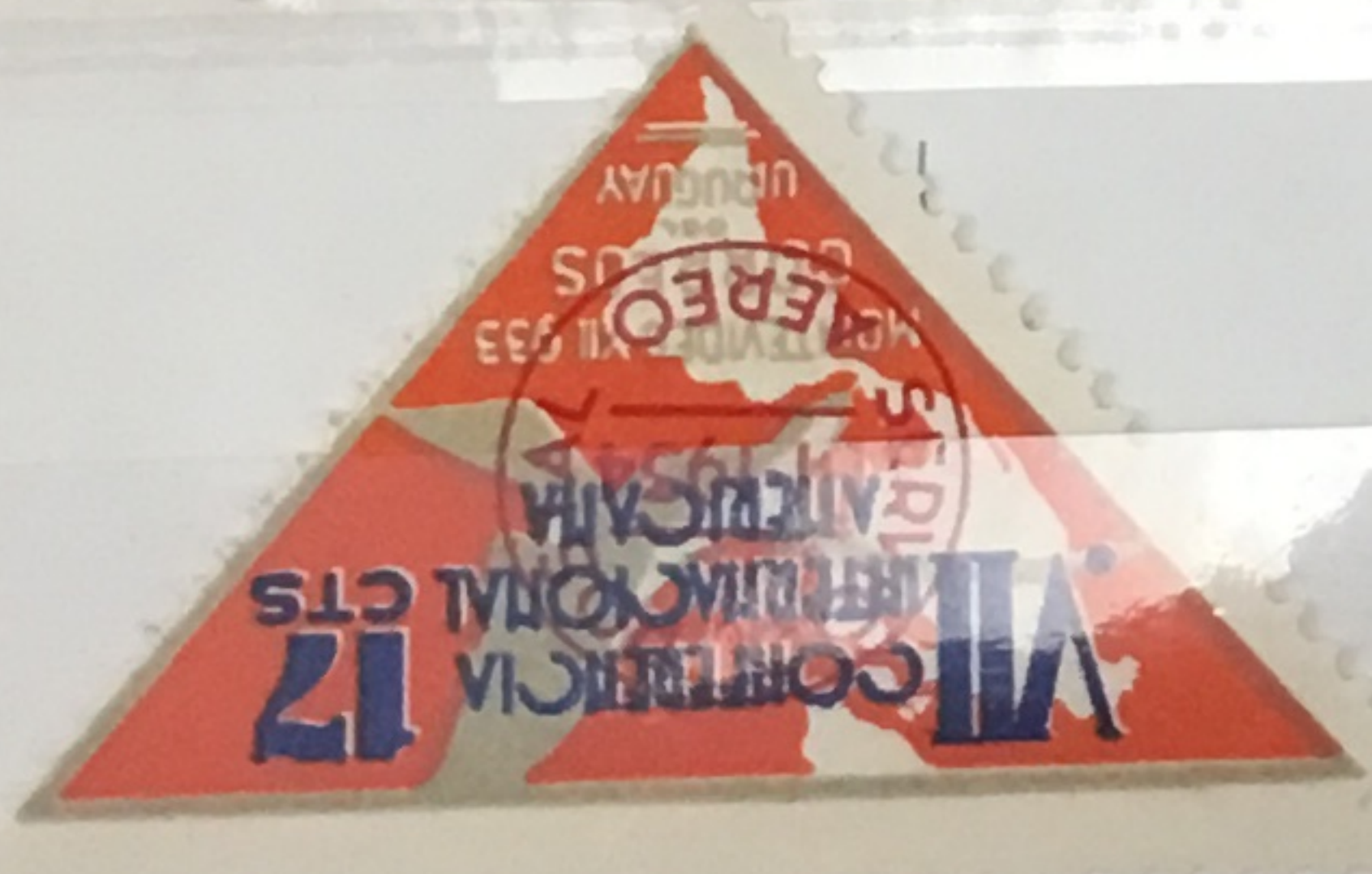
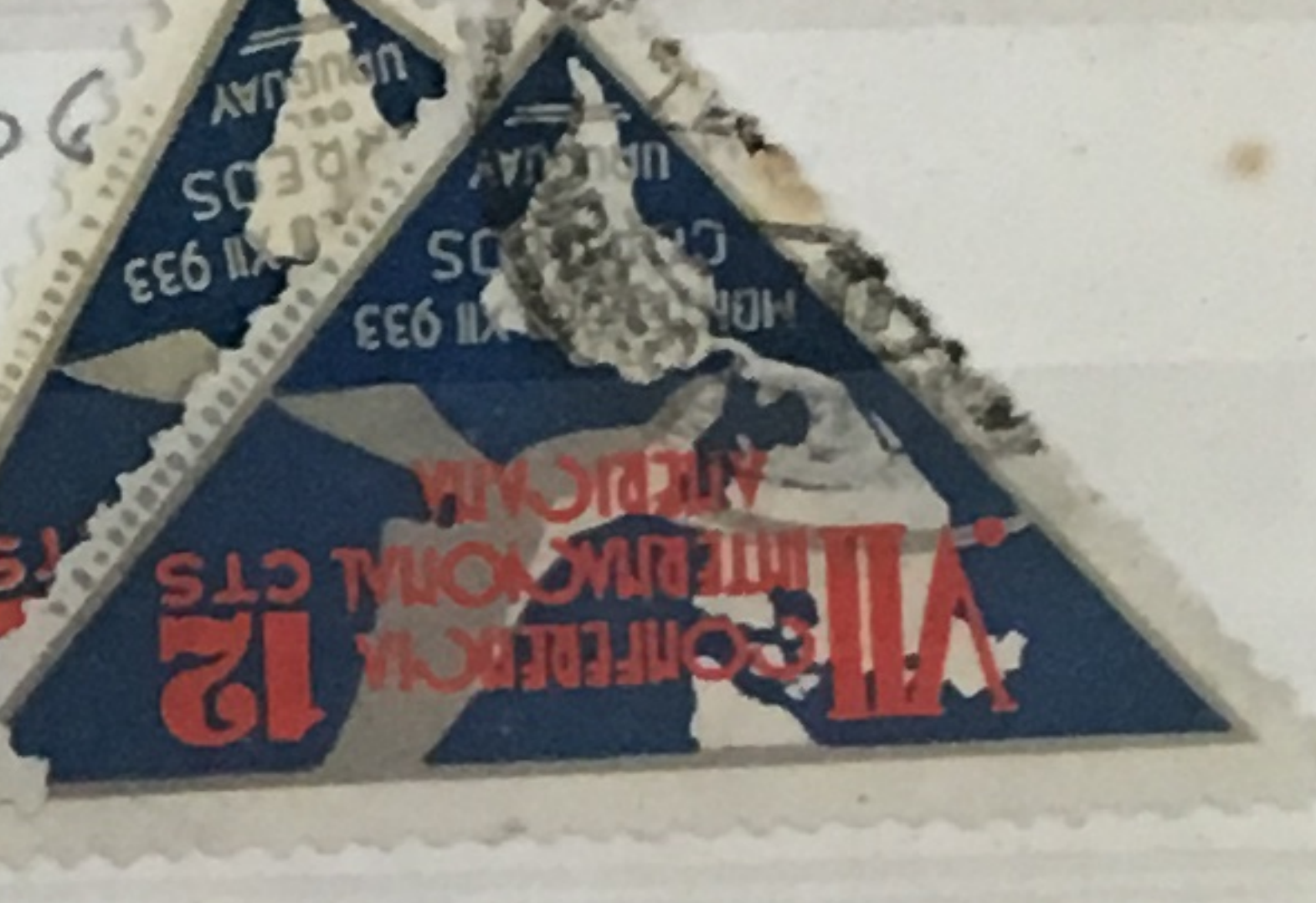
690



695

696

697





750

751

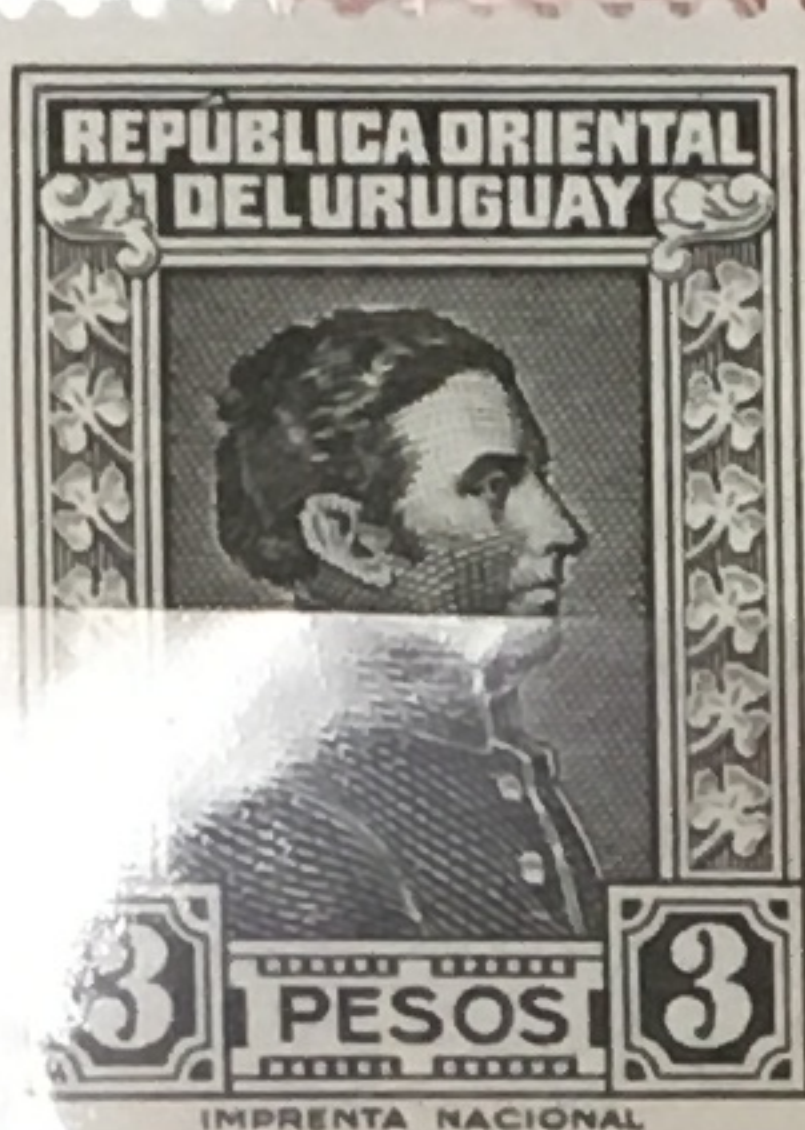
752



753



754



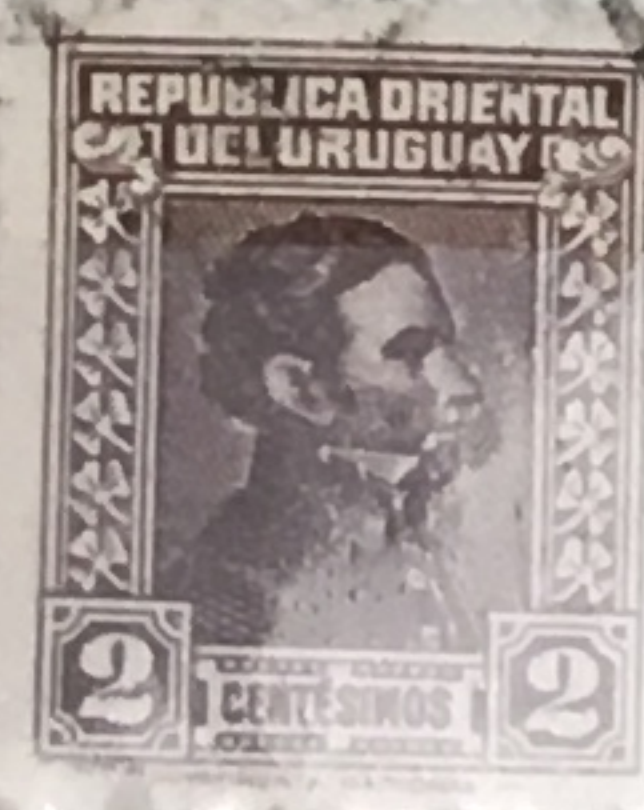
758



759



760



761



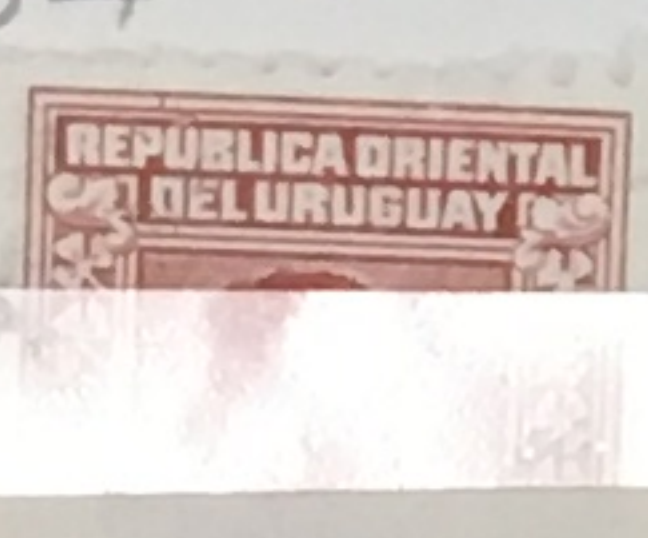
762



763



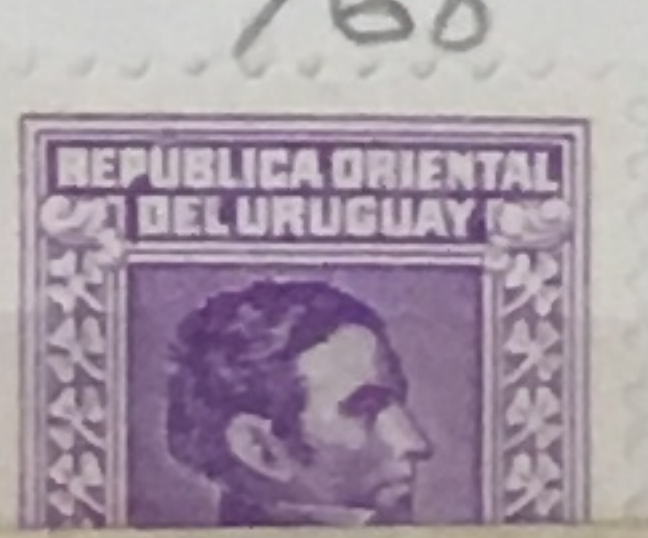
764



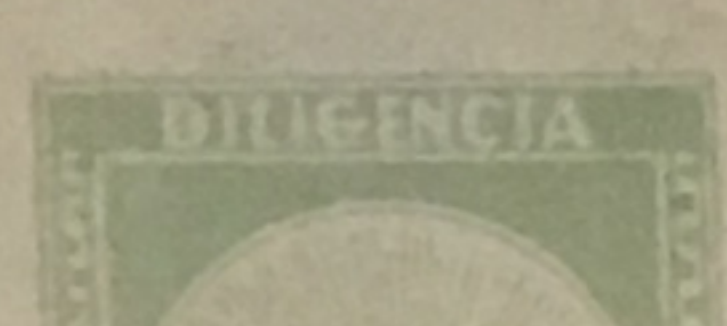
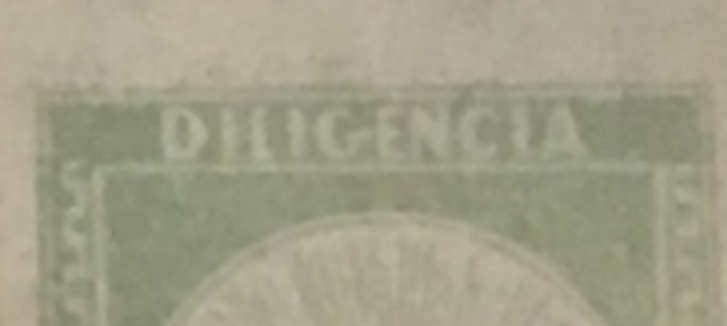
765



767

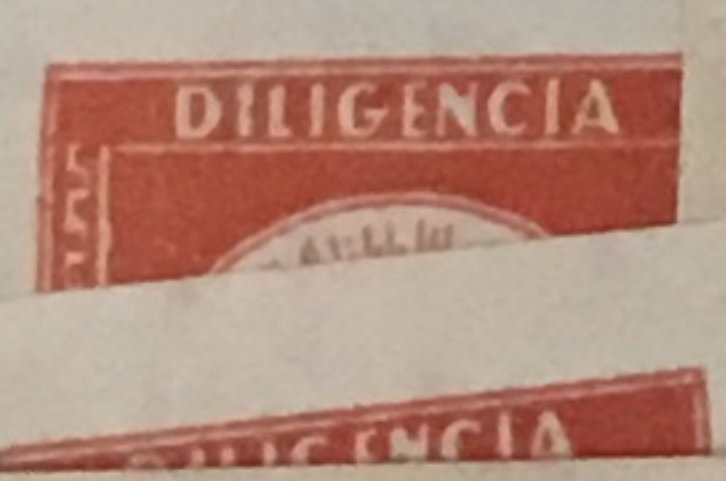


768



REPUBLICA ORIENTAL DEL URUGUAY
EXPOSICION FILATELICA DEL...

REPUBLICA ORIENTAL DEL URUGUAY
EXPOSICION FILATELICA DEL CENTENARIO
11-15 DE ABRIL DE 1931



REPUBLICA ORIENTAL DEL URUGUAY
EXPOSICION FILATELICA DEL CENTENARIO
11-15 DE ABRIL DE 1931
MONTVIDEO