

CONFEDERATE STATES #5 10 CENT ROSE

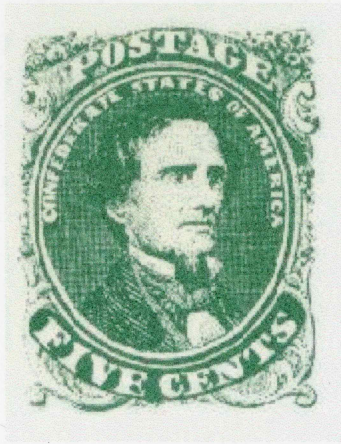


THOMAS JEFFERSON

Designer & Engraver: Charles Ludwig **Printing Method:** Stone Lithography
Lithographer: Hoyer & Ludwig **Number Printed:** 1,150,000 **Earliest Recorded Date of Use:** 10 MAR 1862 (27 MAY 1862 Carmine) **Most Typical Use:** 10c letter rate over 500 miles prior to 1 JUL 1862 and 10c rate for all letters after 1 JUL 1862 **Secondary Use:** Multiples used for overweight envelopes (usually legal size) are scarce.



CONFEDERATE STATES #1 5 CENT GREEN



JEFFERSON DAVIS

Designer & Engraver: Charles Ludwig **Printing Method:** Stone Lithography
Lithographer: Hoyer & Ludwig **Number Printed:** 9,250,000 **Earliest Recorded Date of Use:** Stone A/B -- 16 OCT 1861, Stone 1 -- 23 OCT 1861, Stone 2 -- 2 DEC 1861
Most Typical Use: 5c rate for under 500 miles **Secondary Use:** Pair used as 10c rate over 500 miles (multiples other than pairs used for higher rates are very scarce).

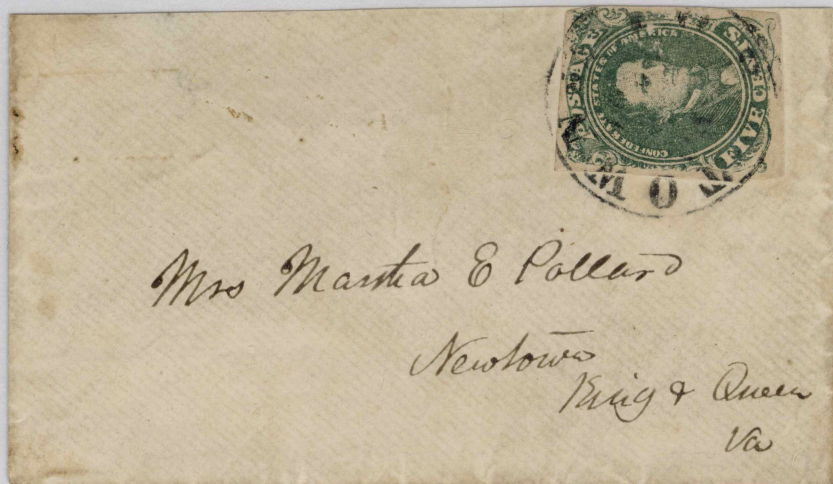


CONFEDERATE STATES #1 5 CENT GREEN



JEFFERSON DAVIS

Designer & Engraver: Charles Ludwig **Printing Method:** Stone Lithography
Lithographer: Hoyer & Ludwig **Number Printed:** 9,250,000 **Earliest Recorded Date of Use:** Stone A/B -- 16 OCT 1861, Stone 1 -- 23 OCT 1861, Stone 2 -- 2 DEC 1861
Most Typical Use: 5c rate for under 500 miles **Secondary Use:** Pair used as 10c rate over 500 miles (multiples other than pairs used for higher rates are very scarce).



CONFEDERATE STATES #1 5 CENT GREEN



JEFFERSON DAVIS

Designer & Engraver: Charles Ludwig **Printing Method:** Stone Lithography
Lithographer: Hoyer & Ludwig **Number Printed:** 9,250,000 **Earliest Recorded Date of Use:** Stone A/B -- 16 OCT 1861, Stone 1 -- 23 OCT 1861, Stone 2 -- 2 DEC 1861
Most Typical Use: 5c rate for under 500 miles **Secondary Use:** Pair used as 10c rate over 500 miles (multiples other than pairs used for higher rates are very scarce).

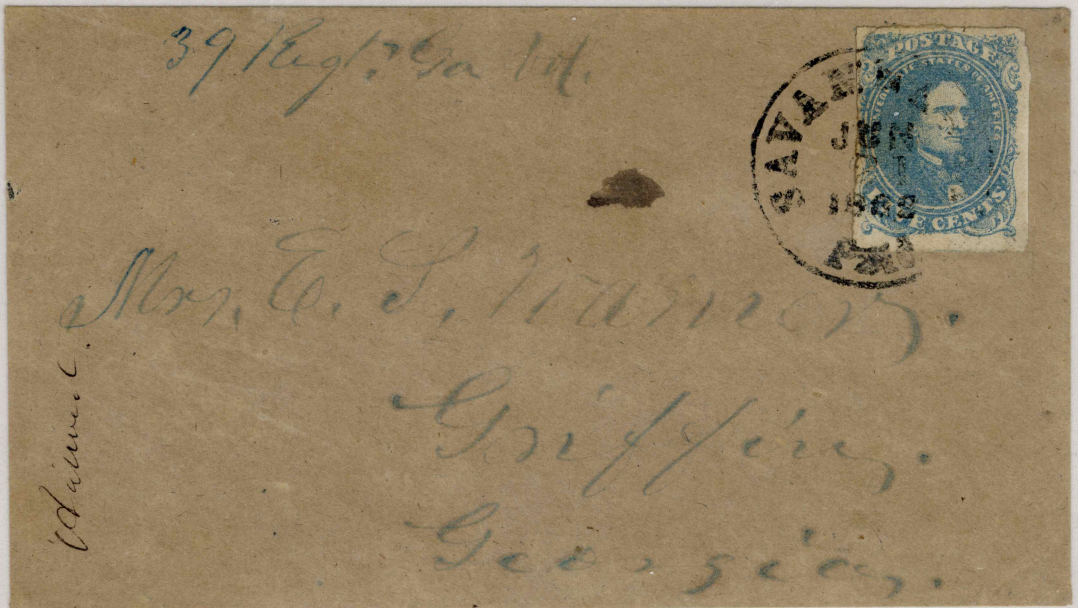


CONFEDERATE STATES #4 5 CENT BLUE



JEFFERSON DAVIS

Designer & Engraver: Charles Ludwig **Printing Method:** Stone Lithography
Lithographer: Hoyer & Ludwig **Number Printed:** 6,700,000 **Earliest Recorded Date of Use:** Stone 2: 26 FEB 1862, Stone 3: 10 APR 1862 **Most Typical Use:** 5c letter rate under 500 miles **Secondary Use:** Pairs or a single in combination with another 5c stamp to pay the 10c letter rate.



CONFEDERATE STATES #7 5 CENT BLUE RICHMOND PRINTING



JEFFERSON DAVIS

Designer & Engraver: Jean Ferdinand Joubert De La Ferte **Printing Method:** Typography first utilizing paper and ink supplied from London and later using paper and ink procured locally in Richmond **Printer:** Archer & Daly **Number Printed:** 36,250,000 **Earliest Recorded Date of Use:** 15 AUG 1862 **Most Typical Use:** Pairs paying the 10c letter rate **Secondary Use:** Singles used in combination with other 5c stamps to pay the 10c letter rate. Singles used as overpaid drop letters. Larger multiples for overweight envelopes. **Miscellaneous Data:** Printed from same plates as CSA #6. Generally distinguished from the London Print by a coarse fuzzy impression and / or the presence of plate flaws.



CONFEDERATE STATES #11

10 CENT BLUE



JEFFERSON DAVIS

(Type I A&D/ K&B)

Designer & Engraver: John Archer **Printing Method:** Steel Plate Engraved **Printer:** Archer & Daly **Number Printed:** 23,800,000 (approx) **Earliest Recorded Date of Use:** 21 APR 1863 **Most Typical Use:** 10c letter rate **Secondary Use:** Pairs paying 20c double weight letter rate, Blocks or Strips of 4 paying 40c Trans-Mississippi rate, few larger multiples for overweight letters **Printer:** Keatinge & Ball **Number Printed:** 7,500,000 (approx) **Earliest Recorded Date of Use:** 4 OCT 1864 **Most Typical Use:** 10c letter rate **Secondary Use:** Multiples for overweight letters, Overpaid drop letters **Miscellaneous Data:** The plates for the A&D stamps were transferred to Columbia SC when the fall of Richmond became evident in late 1864. Printing of the stamps ceased on 17 February 1865 when Sherman's Army captured Columbia SC.

Quint. J. S. R. Thomson.
York. C. H.
So. Car.





Ans. 7th Sep. 1863.



Miss. Camie Gist.

Unionville

Care of Ex-Gov Gist.

So. Ca.



Prof. Gray & Long
Unionville
S.C.

April 14th

190



Miss Minnie Mordecai.

Hon. W. C. Mordecai.

Columbia S. C.



Miss Minnie A. Palleardo
Box 20 Falls
Halifax City

1 March 1864
Oct 7



Capt Brown Manning
A & C Brig Gen James Cantey
Mobile
Alabama




Mrs. Martha H. Fowler
P. J. Fowler Esq
Jefferson Road No
Hatteras County, Va




Prof J. L. Davis
University of Va
Charlottesville
Virginia

875-

A blue postage stamp with a circular postmark is located in the upper right corner of the envelope. The stamp features a portrait of George Washington and the text "CONFEDERATE STATES" and "FIVE CENTS".

Sicut Joseph
Tye River W. House
Nelson County
Va

A red postage stamp with a circular postmark is located in the upper right corner of the envelope. The stamp features a portrait of George Washington and the text "CONFEDERATE STATES" and "TEN CENTS". The circular postmark contains the text "VA. 1862" and "DND".

AUDITORS OFFICE P.O.

OFFICIAL BUSINESS

FREE

AUSTON



P. Baker

*P. M.
Georgetown*

So. Ca.

HEAD QUARTERS,

SUBSISTENCE DEPARTMENT,

7th Brigade, U. S. A.,

Leesburg, Va.

Checks Bank on

Not Examined

Estillville Va
Sept 12th

Paid



Capt H. C. Wood

Col. Fulkerson's
Regt.

Monterey
Highland County
Virginia

Headquarters Cotts Legion
Dec. 1st, 1861

Dear Brother:

I am again

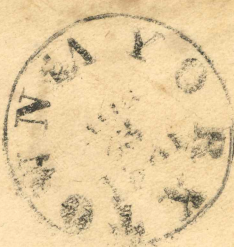
to be sent to it is not and



11



10



10

James J. Black
General

Morgan Co
Ga

Private R. B. Black
Panola County
Cotts Legion