

United States Internal Revenue,

ASSESSOR'S OFFICE, DISTRICT OF



BUSINESS.

Wreck
ass't Assessor.

UNCLAIMED

UNCLAIMED

UNCLAIMED

UNCLAIMED

UNCLAIMED

UNCLAIMED

UNCLAIMED

Wm Ruel
City

ED HAAS, BAILAR

SALT LAKE CITY
FEB 21
UTAH

PRINTED
"DISTRICT OF UTAH"
TERRITORIAL

S15000
1/59



THE PHILATELIC FOUNDATION

21 EAST 40TH STREET
NEW YORK, N.Y. 10016
EXPERT COMMITTEE

No. 0225339
5/18/90

We have examined the enclosed item, of which a photograph is attached, and described by the applicant as follows:

Country: UNITED STATES OF AMERICA

Cat. No.	Issue	Denom.	Color
112	1869	1¢	buff

Scott's unless otherwise specified.

SINGLE ON U.S. INTERNAL REVENUE CORNER CARD CUR., SALT LAKE CITY, UTAH CANCEL ON REVERSE S/L "UNCLAIMED" HANDSTAMP ON FRONT.

AND WE ARE OF THE OPINION THAT:

IT IS GENUINELY USED ON COVER AND USED DURING THE TERRITORIAL PERIOD. * * * * *



Rosen
For The Expert Committee
ACTING Chairman

A 79574



The Philatelic Foundation

341 West 38th Street • 5th Floor
New York, NY 10018
EXPERT COMMITTEE

No. 529250
07/22/2015

We have examined the enclosed item, of which a photograph is attached, and *described by the applicant* as follows:

Country: UNITED STATES OF AMERICA

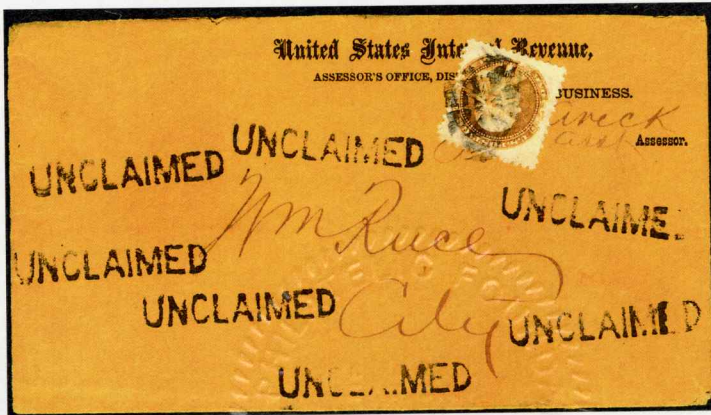
Cat. No.	Issue	Denom.	Color
112	1869	1¢	buff

Scott's unless otherwise specified.

SINGLE, TIED BY GEOMETRIC CORK CANCEL, ON COVER WITH INTERNAL REVENUE CORNER CARD, REVERSE WITH TERRITORIAL "SALT LAKE CITY UTAH FEB 21" PMK., STRAIGHTLINE "UNCLAIMED" STRUCK 7 TIMES.

AND WE ARE OF THE OPINION THAT:

IT IS A GENUINE TERRITORIAL USAGE, *****



529250

For The Expert Committee
Chairman

Photocopies of this Certificate are not valid.