

3/



TAYLOR WORN



NO FACE ONLY DOTS AND LINES



TAYLOR



TAYLOR WORN WITH CANCEL



GLUED TIGHT TO OLD ALBUM TAYLOR



OLD SCOTT SUPPLEMENT TAYLOR PLATE



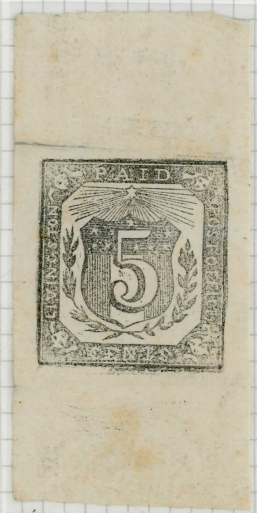
PHOTO OF SCOTT



NOT SCOTT



T WORN



A TAYLOR PROOF NOT ON ALBUM PAGE

BLOCKADE

FEWER THAN 30
EXAMPLES KNOWN

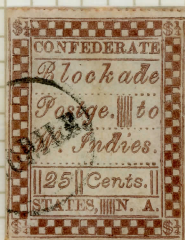
UPHAM?



1B a



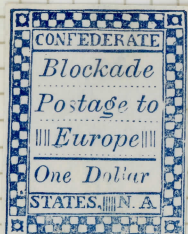
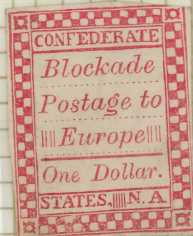
1A



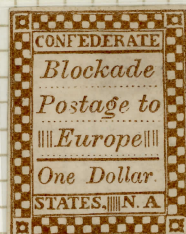
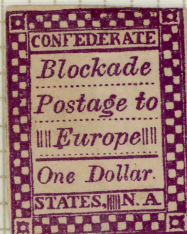
1B b



1C

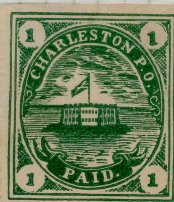


ONLY CANCELLED
AND "AGED" TAYLOR
TAYLOR KNOWN



COPY OF TAYLOR
ALSO KNOWN
IN BROWN, BLUE,
ORANGE, RED
THINNER PAPER

CHARLESTON S.C.



7

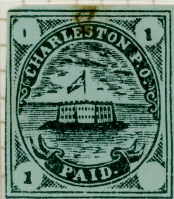
7

7

7

7

7



7

7

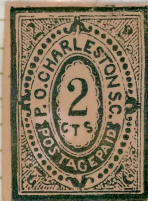
7

7

7



7

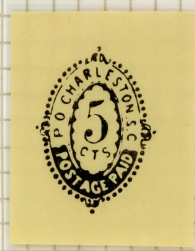


TAYLOR

TAYLOR

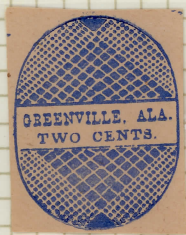
TAYLOR

RICK
CALHOUN
BELIEVES
GENUINE



TAYLOR

1978 STRIKE FROM
W.M. BROWN DIE



7

7

7



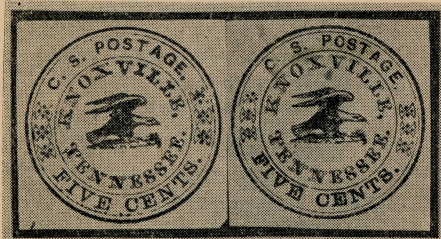
7

7



**Knoxville—Confederate Provisional
Dangerous Counterfeit**

The Confederate postmaster at Knoxville, Tenn., in 1861, issued some rare stamped envelopes, 5c blue and 10c red, which are listed by Scott as Nos. 47XU1, etc. The two values are listed each on white and orange paper, presumably wove paper, since Scott does not indicate the contrary, but I have also seen a 5c blue on white, diagonally laid.



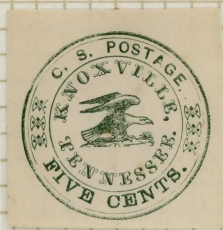
The genuine issue of the 5c is illustrated above at the left. (I have seen no counterfeit of the 10c). The item at right is the counterfeit, differing in numerous details, readily identified when both are shown together. In the original, the "V" of "Knoxville," is directly under the "S" of "Postage," while in the fake the "V" falls under the "O" of "Postage." The Scott catalog illustration (in reduced size) is that of the counterfeit, pictured in Scott publications as far back as 1885, perhaps earlier. This highly deceptive counterfeit was typeset, as was the original, and was evidently a *new set-up of the same type pieces*. The original seems always in the one arrangement of type, apparently set up in a single subject and the envelopes imprinted one at a time.

This fake was a contribution to philately by J. A. Petrie, known as "Doctor," of Phillipsburg, N. J., and is found imprinted on various colors of paper, frequently on cut-square corners of envelopes. Petrie floated much unorthodox merchandise on the philatelic market, and succeeded in developing a somewhat notorious reputation, seemingly reaching his zenith in the late 1890's. In a sardonic mood, he also created a now fairly scarce fake, patterned in the style of the Confederate postmasters' provisionals — "P. O. Cheatem, N. J., J. A. Petrie, P.M.," with a numeral "2" in the center.

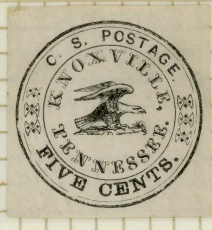


I also illustrate the very crude counterfeit, commonly seen in numerous colors, printed from a woodcut. This fake is attributed to the equally famed and never to be ignored S. Allan Taylor.

George B. Sloane



PETRIE
SCOTT 1873

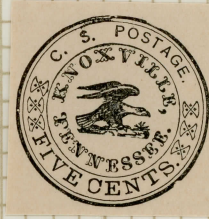


PETRIE
WITH GUM
SAME MOENS 1892



APRIL TO
N. J. 1862

*of the
dec. 1862*



SCOTT

?



T WITH GUM



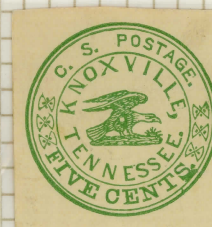
TAYLOR



T WITH GUM



TAYLOR



TAYLOR



TAYLOR

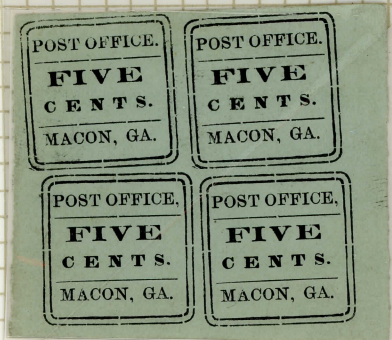


OLD "REPRINTS" BUT
 THESE ARE COUNTERFEITS
 NOTE COLON BETWEEN "C"
 OF C.H. AND "K" OF KNOX-
 VILLE SEE GRAHAM & DIETZ

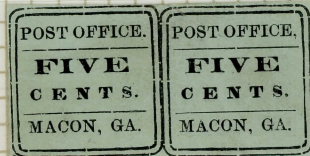
PETRIE



SETTING 6

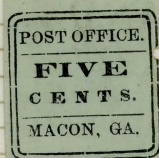


PETRIE



← NOTE INSIDE
 OF 0 OF
 POST.

PETRIE
 I AM ONLY AWARE
 OF TWO GENUINE
 UNUSED MACON PMP



SETTING ON THE
 SAME PAPER TWO
 DIFFERENT SETTINGS

COMMA OR PERIOD AFTER POST OFFICE ONLY 2 POSITIONS USED

KENYON LAND COMPANY
LONG BEACH, CALIFORNIA

Jan. 7. 1927.

Mr. Edward S. Knapp,
New York, N.Y.,

Dear Sir;

In July 1895 I purchased of R.H. Glass, ex-Confederate Postmaster of Lynchburg, Va., his original electrotype, from which the local stamps were printed, - see SOUTHERN PHILATELIST, vol. I, p.167. This, and the documents showing transfer, etc., I desire to sell, my price being \$750.00 cash, or \$1,200.00 in exchange for U.S. and Confederate stamps. At the request of a number of collectors, I made 250 reprints, they being in blue and surcharged REPRINT in black. If you are interested in acquiring this electro, I would be pleased to hear from you.

Very truly yours

261 Granada Ave.

Brewster Kenyon.

*No!
(a damaged
duplicate)*



REPRINT FROM
ORIGINAL ELECTROTYPE



REPRINT FROM
ORIGINAL ELECTROTYPE



REPRINT FROM
ORIGINAL ELECTROTYPE



REPRINT FROM
ORIGINAL ELECTROTYPE

LYNCHBURG, VA.—I am enabled to present the authentic history of this interesting Local. An electrotype (made from the original woodcut) is still in existence, and has been submitted to me for inspection, along with the following documents. The name of the owner is withheld by request.

DAILY NEWS OFFICE
Iron Front Building, 215 Ninth Street
CARTER GLASS, Proprietor,
Lynchburg, Va.

"* * * In December, 1893, I received a note from you inquiring whether I had the original 'plate' upon which my old Confederate postal stamps were printed in 1861. I informed you, I think, that I had not, and that it had been destroyed by the great fire here in 1883, which consumed the whole printing office and square, with the exception of a few worthless fragments.

"I now beg leave to state to you that a few days ago the foreman of my office had occasion to open a few boxes of old type and stereotype plates, and among them stumbled, to the surprise of all of us, upon my old postal die.

"It shows abrasion on one corner of its face by its long contact with old cuts, but it is still very distinct, and would print almost as clear a stamp as ever. I have placed no value upon it, but I suppose you know the value, at least to yourself, and if you are still in the same line of business, I would be glad to correspond with you again upon the subject.

"I have received from time to time four other inquiries of the same kind, and more than a hundred for my old stamps and envelopes, and had to give them all the same reply. I have given them now an alike reply in regard to my unexpected find, and hope to hear again from all of them.

"Very Respectfully, your obedient servant,

"R. H. GLASS."

The following affidavit accompanies the sale of this electrotype of the Lynchburg Local:

"I hereby certify that I have not printed in the original colors any stamps from my old Confederate stamp die sold to——— and I hereby agree not to divulge the price paid me to the general public.

"R. H. GLASS."

NOTARIAL ATTEST

"STATE OF VIRGINIA,

"City of Lynchburg,—ss.:

"This day personally appeared before me, K. Otey, a Notary Public in and for the City and State aforesaid, R. H. Glass, who by me being duly sworn on his oath says, that the writing above is true and correct, and binds himself to be bound thereby.

"Given under my hand and official Seal this 18th day of July, 1895.

"K. OTEY, Notary Public."

NEW SOUTHERN PUBLICATIONS



Carter Glass.

Printed by Brewster Kenyon from a duplicate electrotype supplied him by Postmaster Glass. Note damage to lower left corner which identifies this duplicate electrotype. Some prints, of this was one, were presented to Carter Glass of Lynchburg, who autographed them. Data from Fred Grant who now owns this duplicate electro. Original has Glass in top of big 5. 11/22
Nov/1958 Mac's

MAC'S COMMENTS ON REVERSE

RICHMOND VA.



3 CENT



MOENS COPY



LATE



TAYLOR



COULD BE DIFFERENT TAYLOR PRINTING?



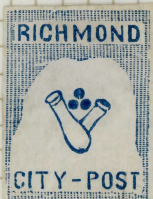
ALFRED SAITH (1880)



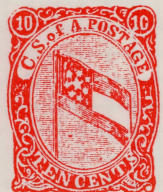
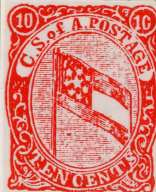
EARLIEST FAKE NOT TAYLOR



TAYLOR



TAYLOR

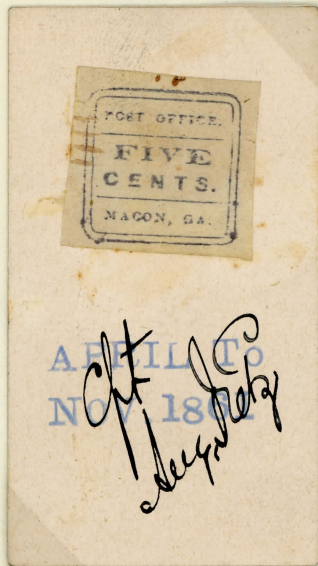


COUNTERFEIT POSTMASTER'S PROVISIONALS

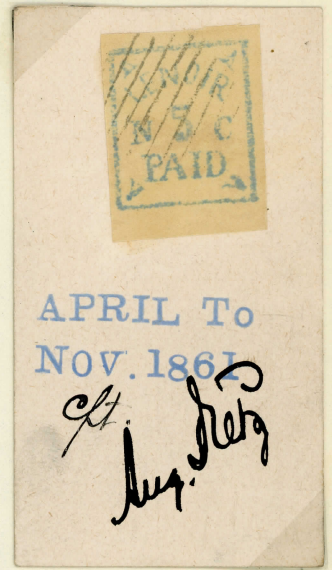
General Dietz threw up his hands in horror when he saw these- or maybe he just threw up.



Ringgold,
Georgia.



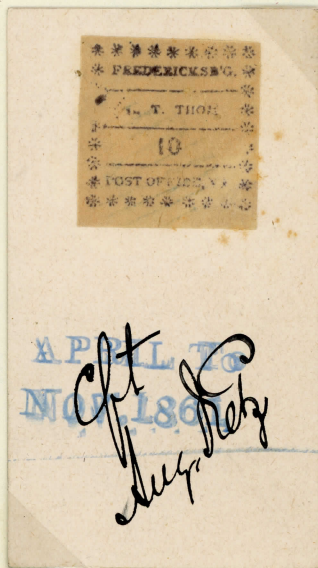
Macon,
Georgia.



Lenoir,
N.C.



Salem,
N.C.



Fredericksburg,
Virginia.



Petersburg,
Virginia.



VERY EARLY PRINT ON HEAVY PAPER
 POS 31-33 - 91-93 DIAMONT WRONG
 COLOR



THE CUT SHEET NOTE FLAWS
 POS 32 & 42 GOOD QUALITY
 NOT DIETZ PROBABLY DIAMONT



FROM OLD COLLECTION THESE 2 NOTED
 AS PRINTED BY GEO. W. LINN COLUMBUS, OHIO
 SLIGHT GLOSS TO PAPER

ISSUED UNDER AUTHORITY OF
 JAMES A. FOLLY, POSTMUSSER GENERAL

PRINTED BY
THE DEFICIT BUREAU OF THE POST OFFICE

IN COMPLIMENT TO
THE COLUMBUS PHILATELIC CLUB

COLUMBUS, OHIO, JANUARY 12, 1935
 PLATE NUMBER 1234567890

DIAMANT PRINTING 1896.

From the original plate - To Mr. Edw. S. Keapp from H. A. Diamond



02184



BLOCK OF 49 #41-#97 PROBABLY ONE OF THE EARLIEST
PRINTS OF THIS "CUT PLATE." WORKMANSHIP IN GENERAL IS
RATHER GOOD & MOST FLAWS SEEN HERE ON ARE
PERMANENT & APPEAR IN MUCH GREATER DETAIL ON NEXT
SHEET #52, 92, 91, 92