

Schuyler Rumsey Auctions, Inc.

2245

United States Collection, 1847-1970
Sale No. 78. April 26-29, 2018. Item 199307

UNITED STATES

Imperforated

1847

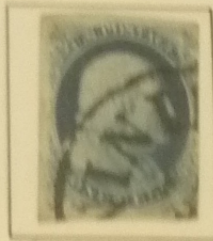
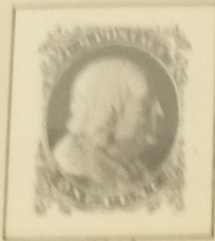
Geschnitten



Imperforated

1851/57

Geschnitten



5 77

3A pos 6 R 18 X

6 pos 92 R 4 X

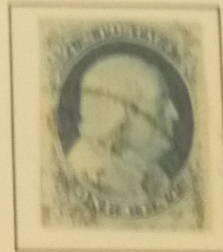


Type III

Type III a

1c
blue

1c
blue

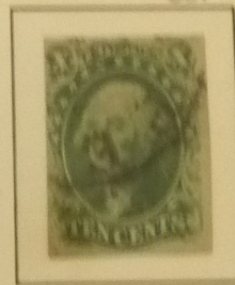
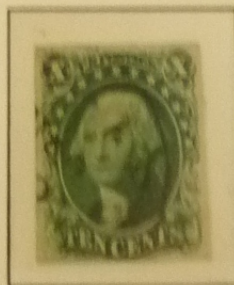
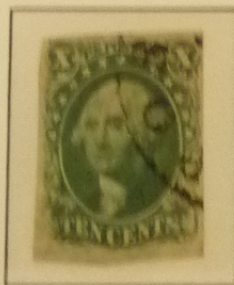
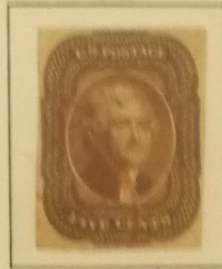


7

8

8A

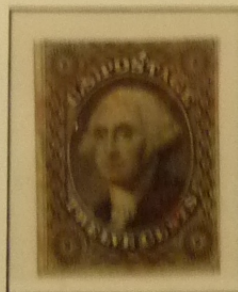
7



cut.

13

16 pos 64 L 1



Perforated 15

1857/61

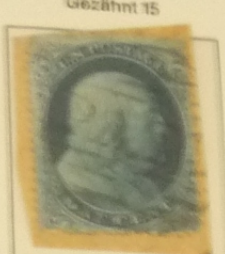
Gezähnt 15



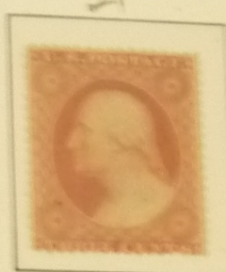
18



19 * cert.



21



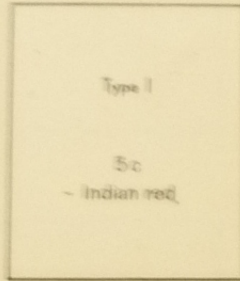
26



27



28



Type I

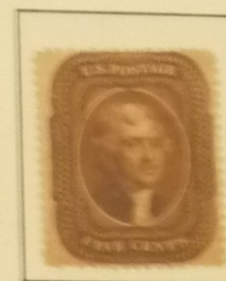
5c

- Indian red

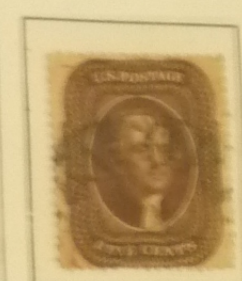
284 *



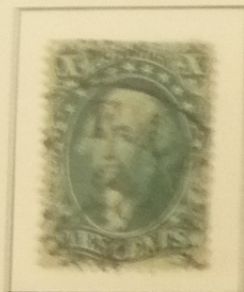
29



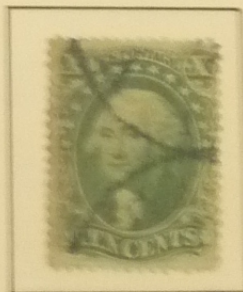
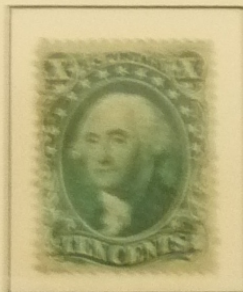
30



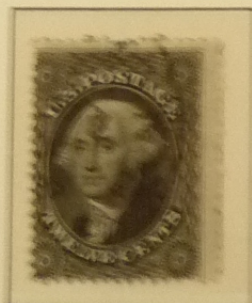
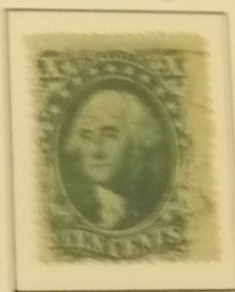
30A



31



34

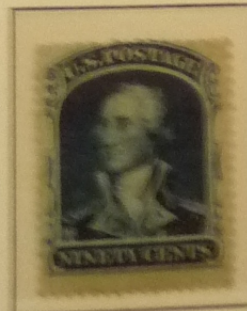
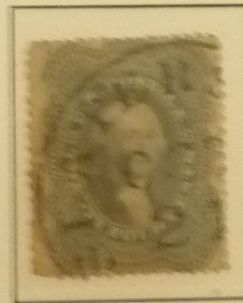


(← Plate I)

Plate III

12c

black



39

UNITED STATES

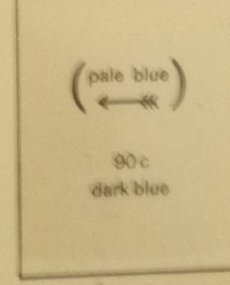
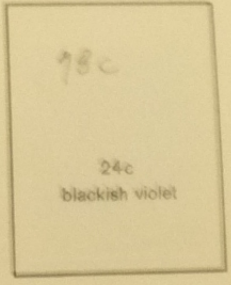
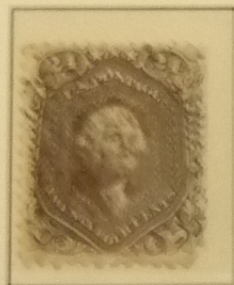
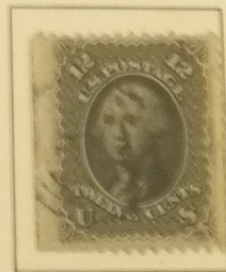
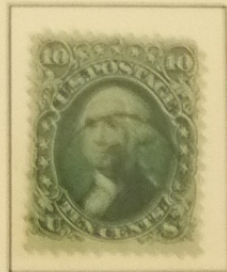
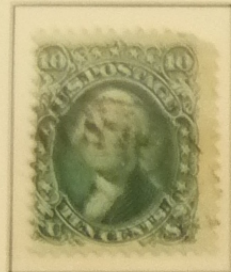
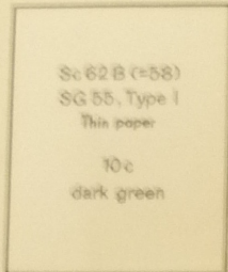
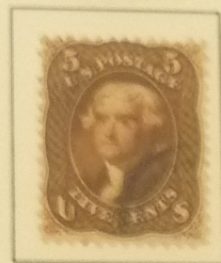
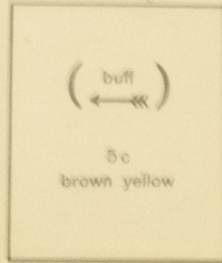
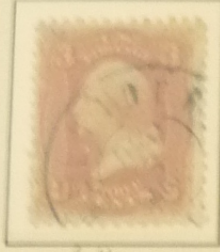
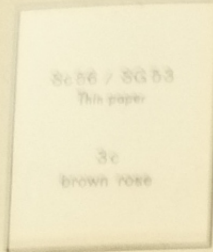
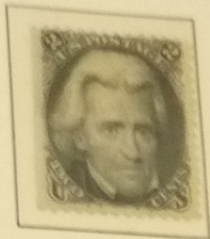
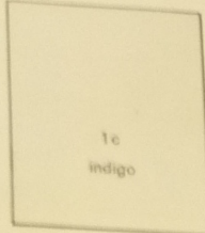
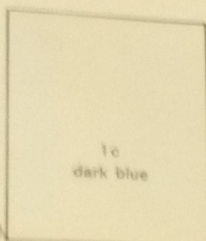
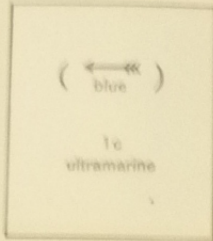
Without Grill

Perforated 12

1861/66

Gezähnt 12

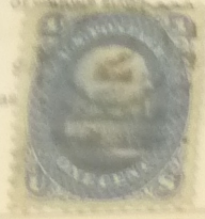
Ohne Waffel-Einpressung



UNITED STATES

1867

Embossed with grills
of various sizes



102 SPEC. P.T.B.



86



92



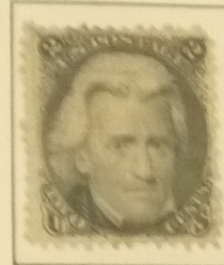
85

D. Grill (IV)
12 x 14 mm

2c
black



Z GRILL



D. Grill (IV)
12 x 14 mm

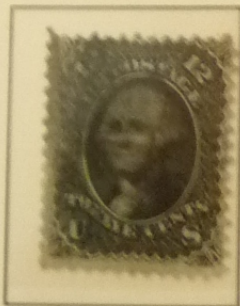
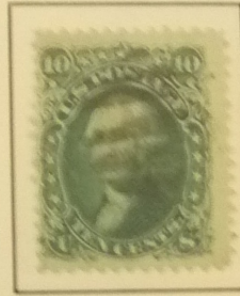
3c
rose



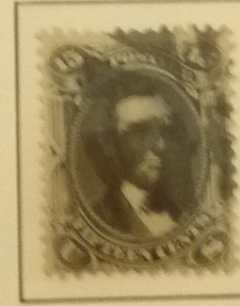
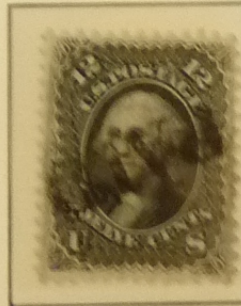
Z GRILL



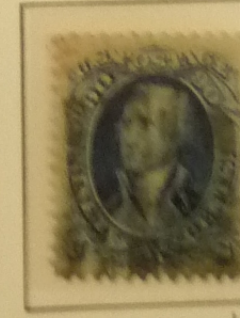
C GRILL



Z GRILL



art.



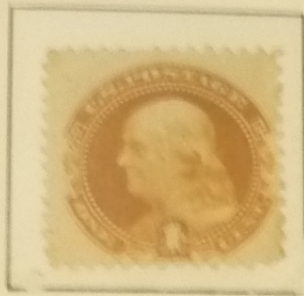
101

102

Embossed with G. Grill

9 1/2 x 9 1/2 mm

Perforated 12



112

Mit Waffeleinpressung

9 1/2 x 9 1/2 mm

Gezähnt 12



122

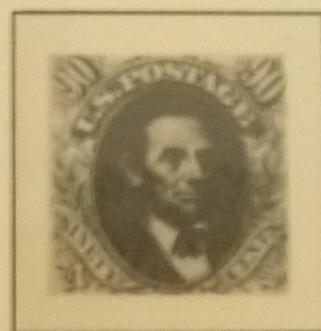
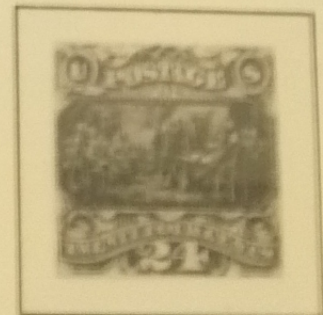
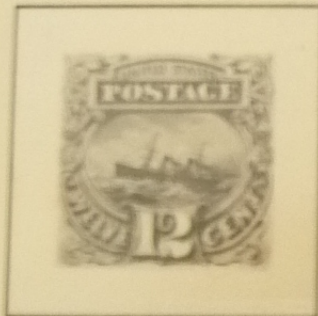
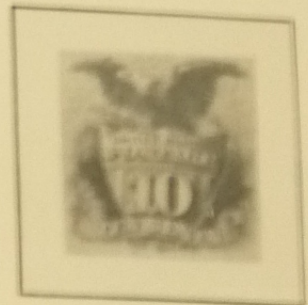
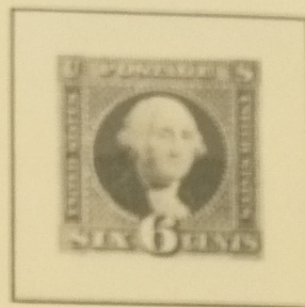
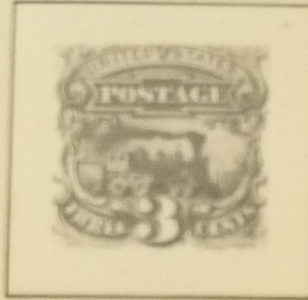
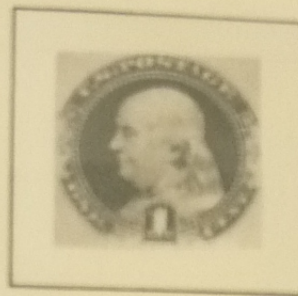
1875

Hard white Paper
without grill

Perforated 12

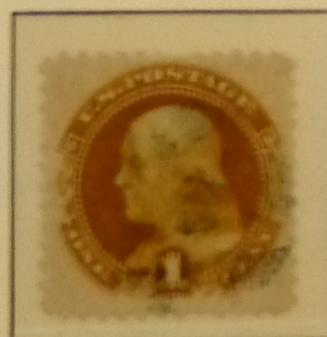
Weißes hartes Papier
ohne Waffeleinprägung

Gezähnt 12

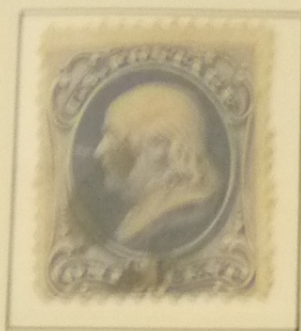


1880

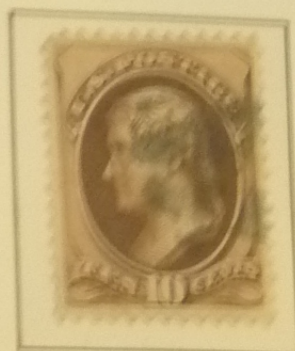
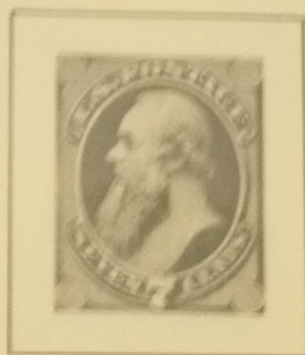
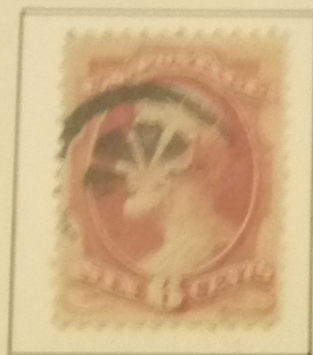
Soft porous paper – Weiches poröses Papier



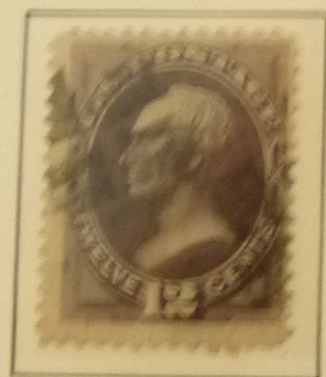
Embossed with Grill - Mit Waffeleinprägung
 Printed by the National Bank Note Company



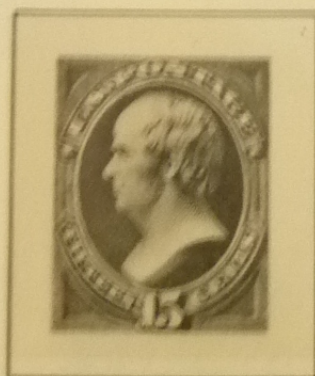
134



cert



140 cert



* cert



cert

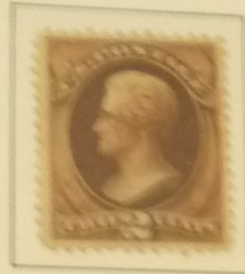


144

UNITED STATES

1870/71

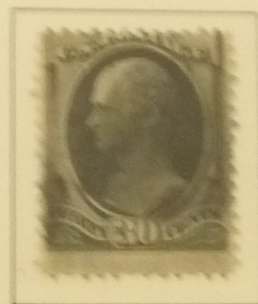
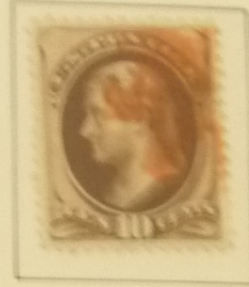
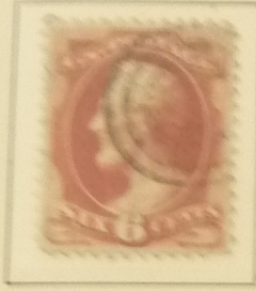
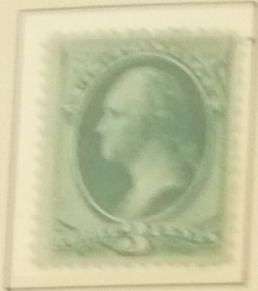
Without Grill - Ohne Waffelung



Printed by the

145

white wave paper
National Bank Note Co.

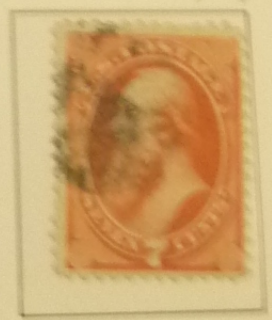
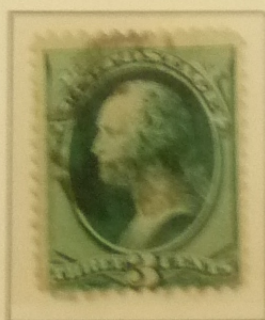
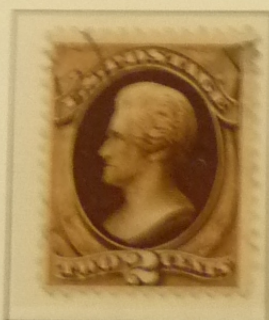
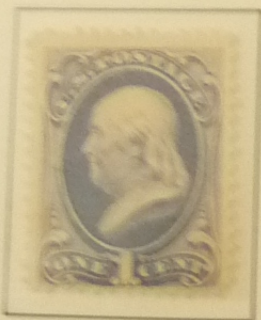


155

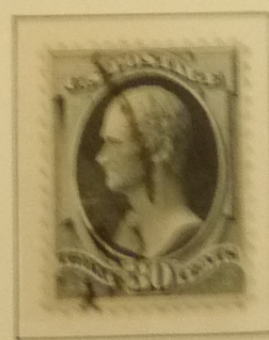
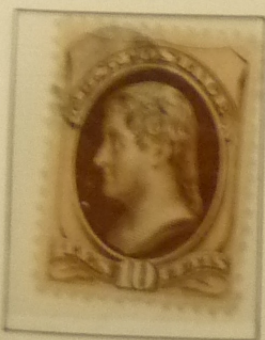
secret marks

Printed by the Continental Bank Note Co.

white wave paper



156



166

UNITED STATES

1875

Yellowish wove paper



178

1879

Printed by the American Bank Note Co.

Soft porous paper



182

X

*

*

greenish black

191

Designs of 1873 Re-engraved - 1881/82 - Neugravierte Platten



206

209

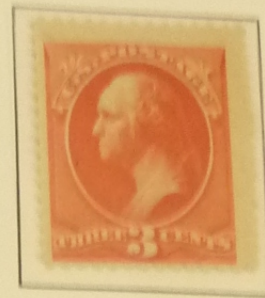
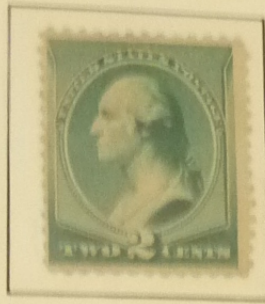
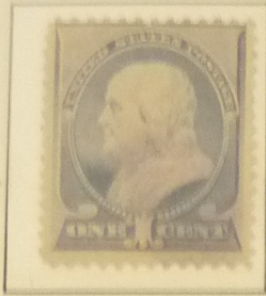
1882/83



211B

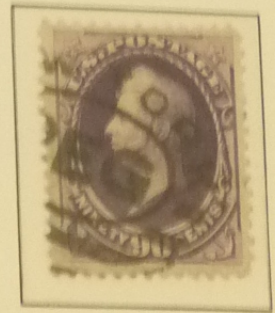
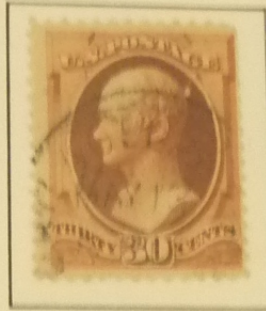
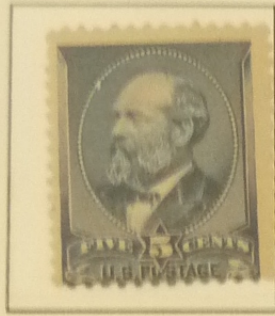
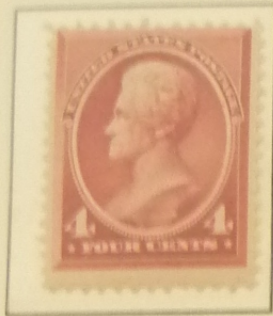
205

1887

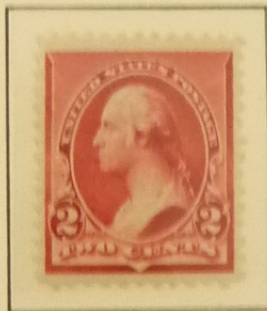
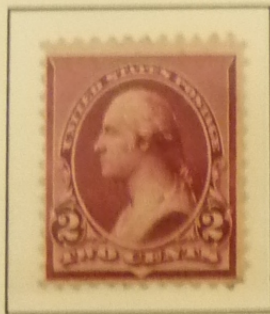
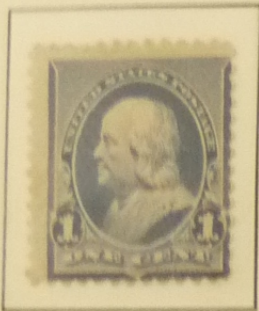


212

1888

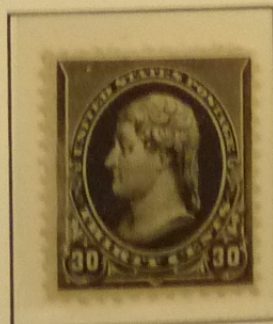
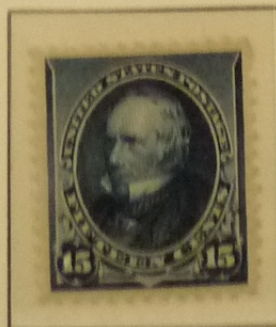
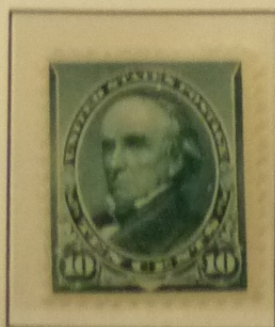
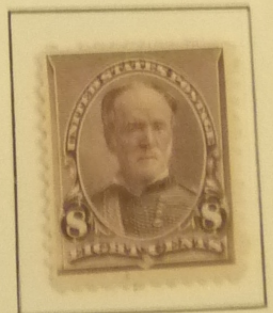
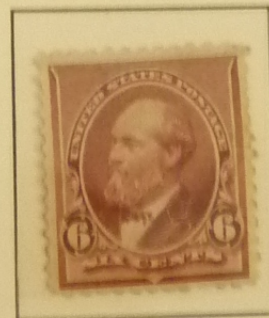
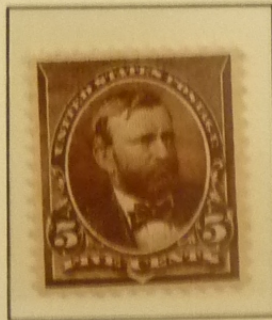
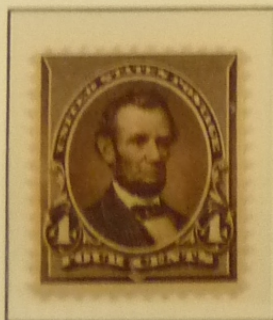
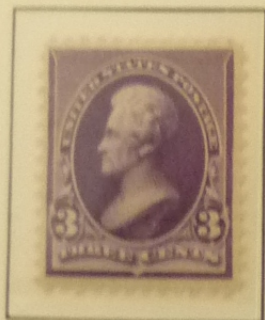


1890/93



Cap on left „2“
Mützen auf
linker Wertziffer
2c
carmine

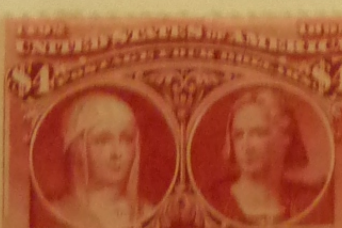
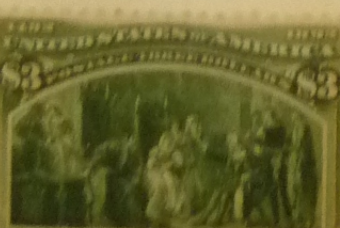
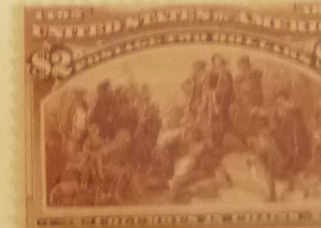
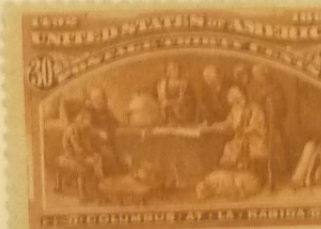
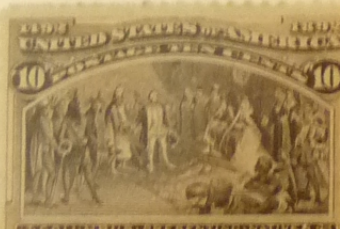
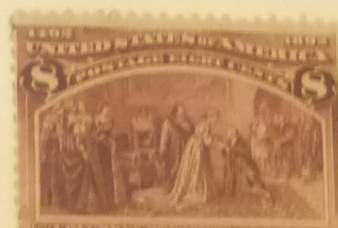
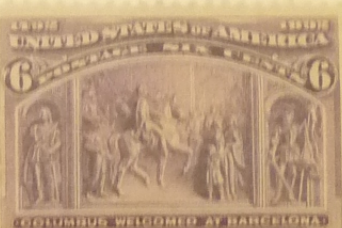
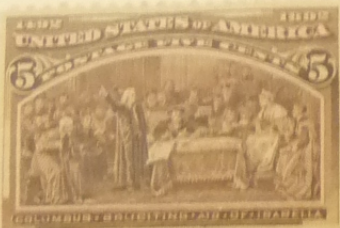
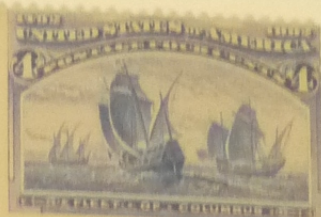
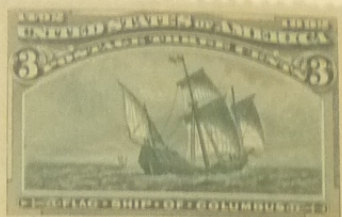
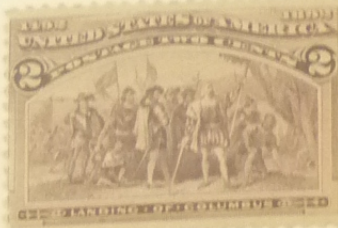
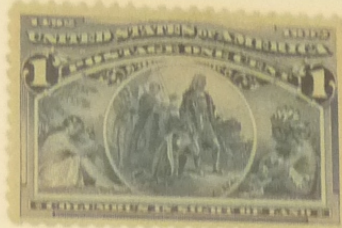
Cap on both „2“s
Mützen auf
beiden Ziffern
2c
carmine



229

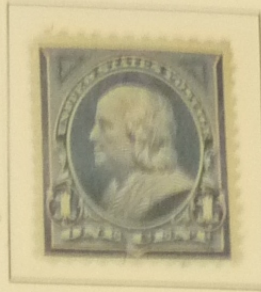
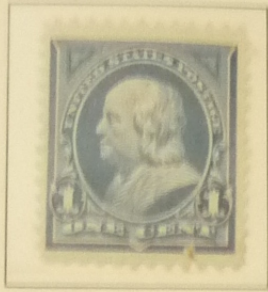
Columbian Exposition

1893

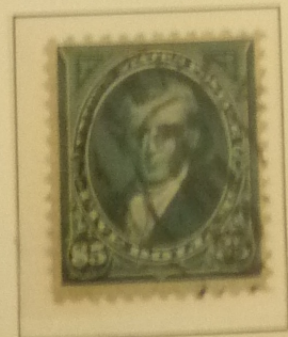
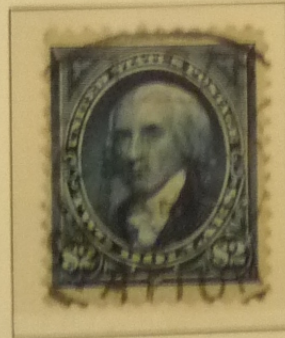
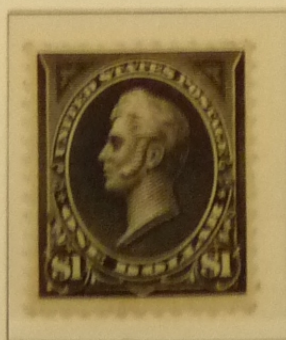
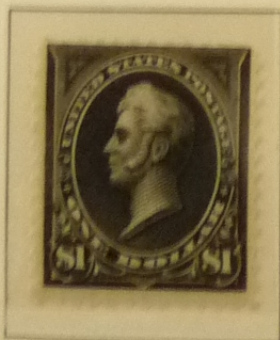
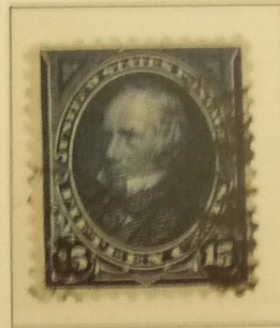
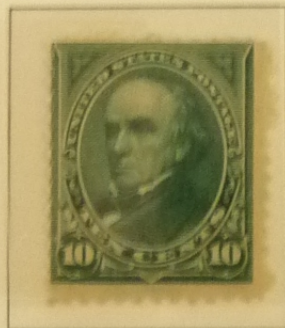
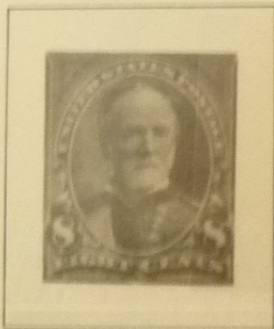
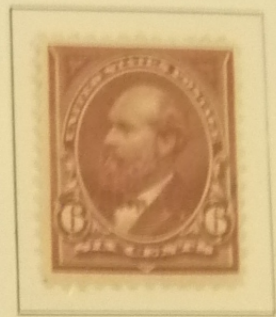
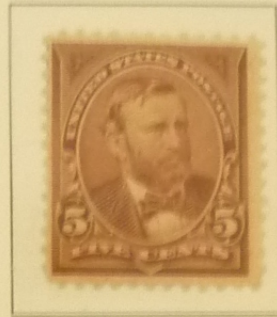
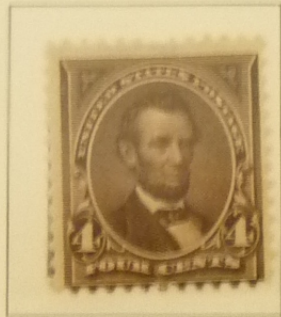
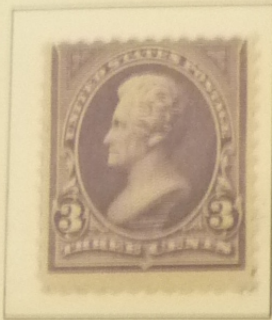
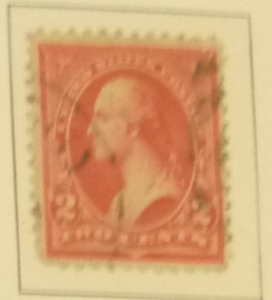
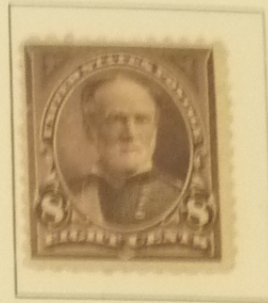
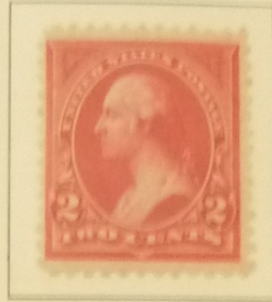
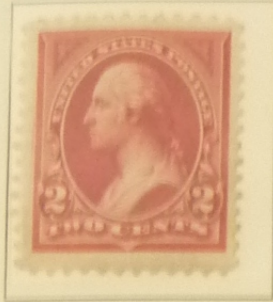
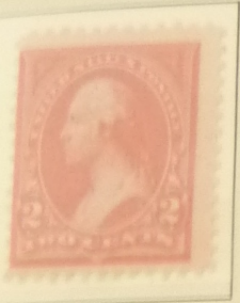


With triangles in upper corners.

Unwatermarked



246

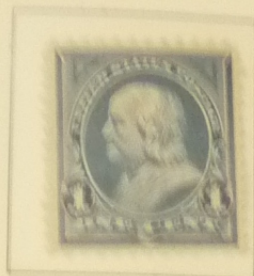


261

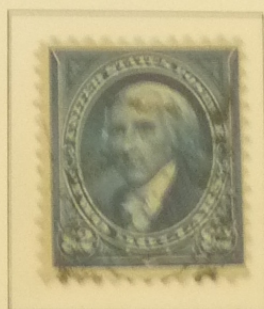
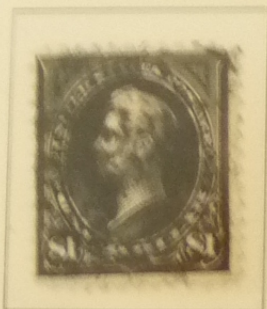
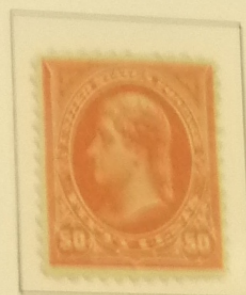
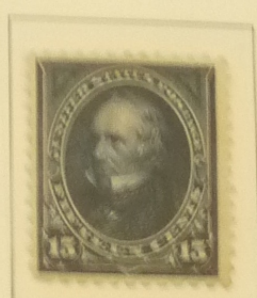
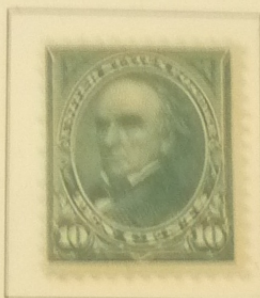
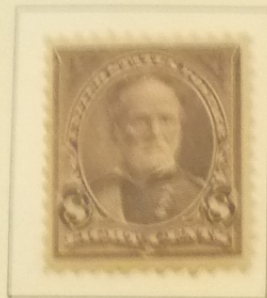
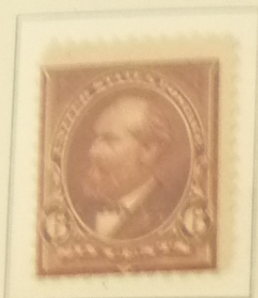
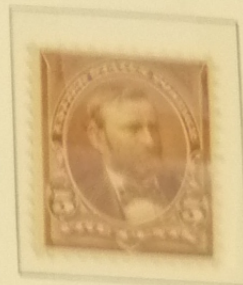
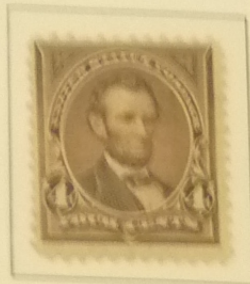
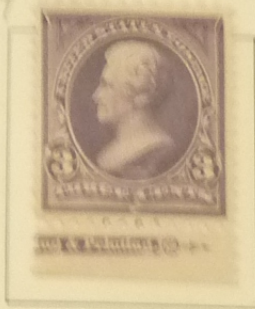
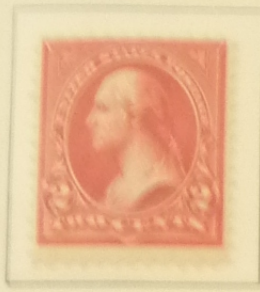
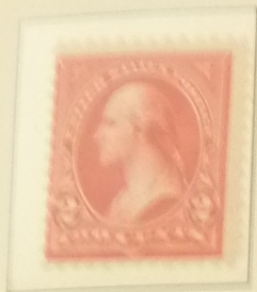
263 cent.

1895

Watermarked
USPS



Mit Wasserzeichen
USPS



278

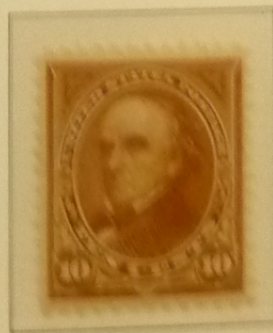
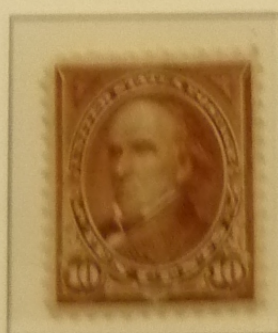
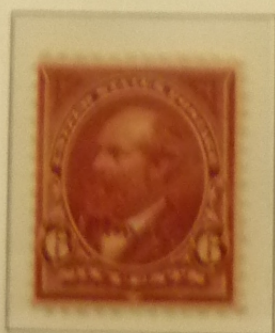
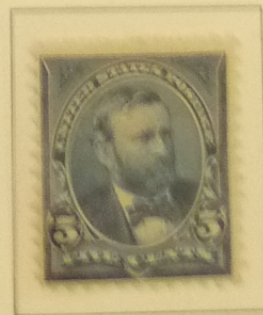
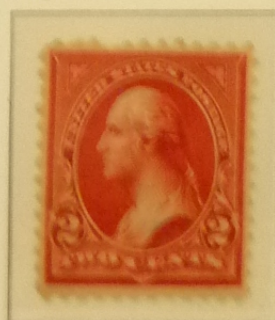
Colors changed

1898

Farbänderungen

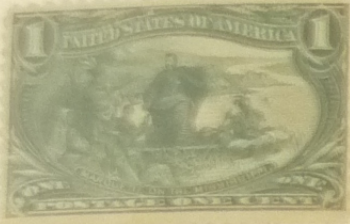


279

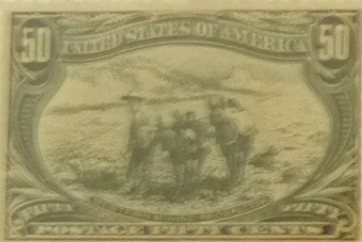
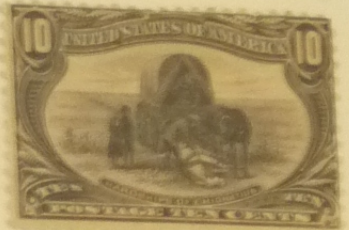
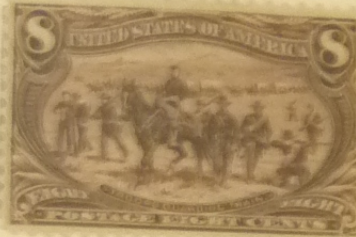
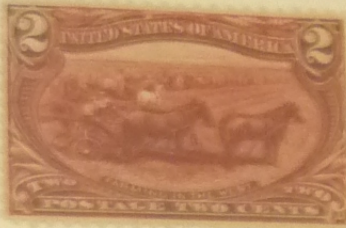


284

1898



285

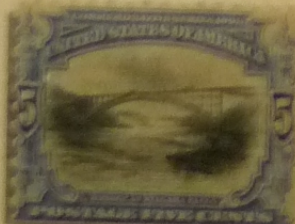


Pan-American Exposition

1901



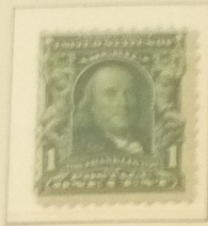
294



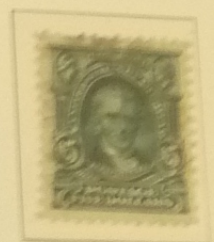
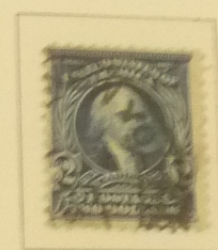
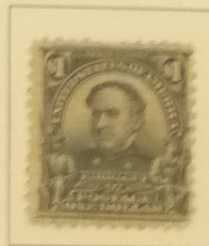
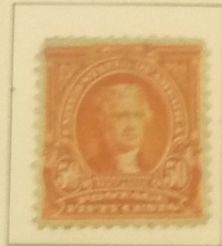
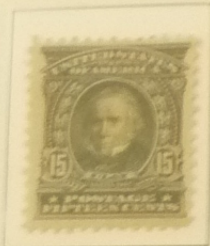
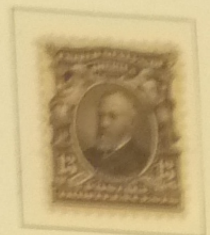
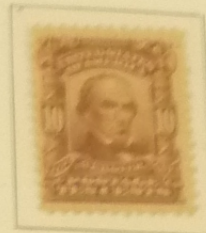
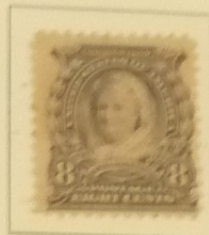
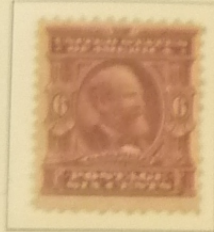
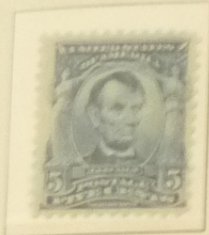
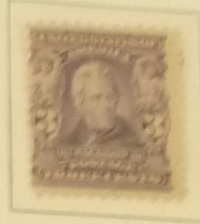
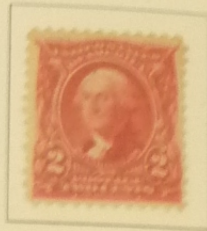
UNITED STATES

1902/03

Wmkd. USPS - Perf. 12



300



1906/08

Imperforated



319

315

104

1903

1906

Perf. 12

Imperf.



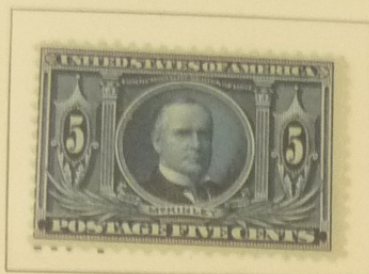
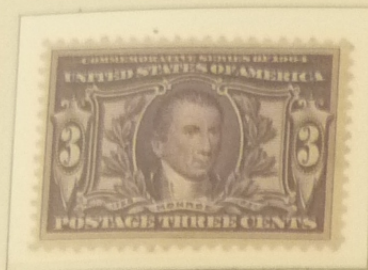
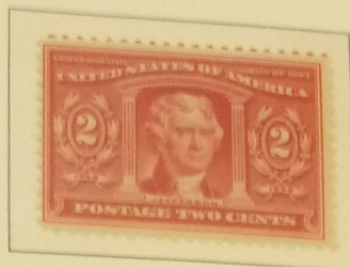
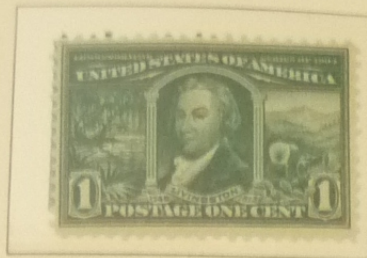
320

320a

320b

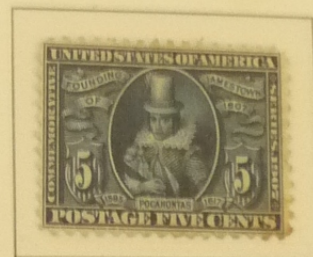
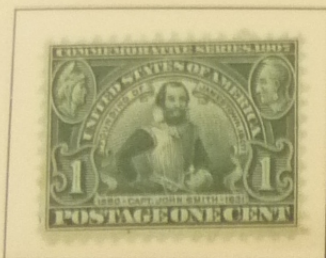
1904

Louisiana Purchase Exposition



1907

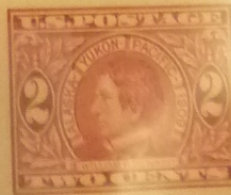
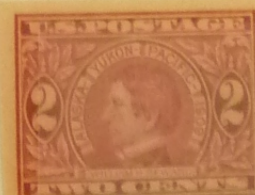
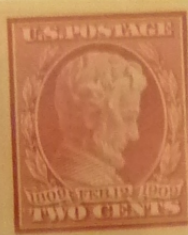
Jamestown Exposition



1909

Perf. 12

Imperf.



Perf. 12

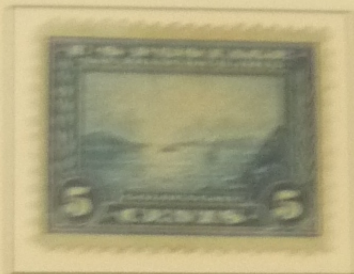
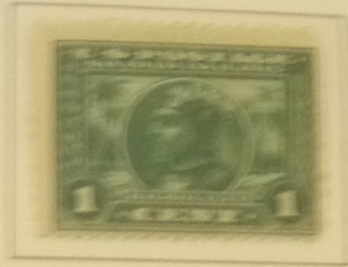
Bluish Paper

Imperf.



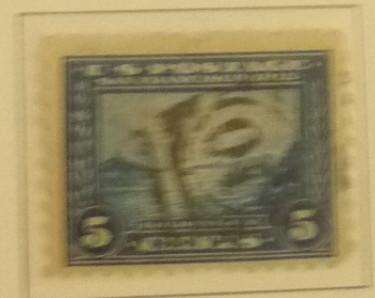
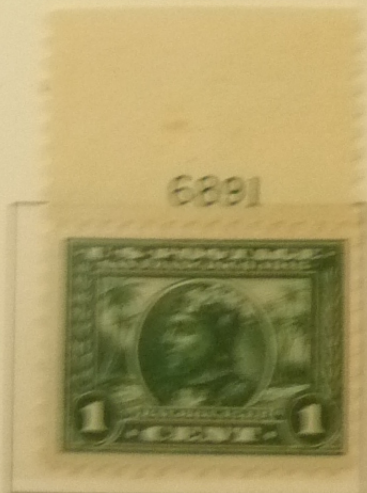
18113

Perf. 12



1814/15

Perf. 10



1919



537a art *

Pilgrim Tercentenary Issue

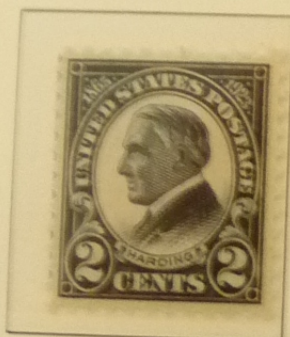
1920



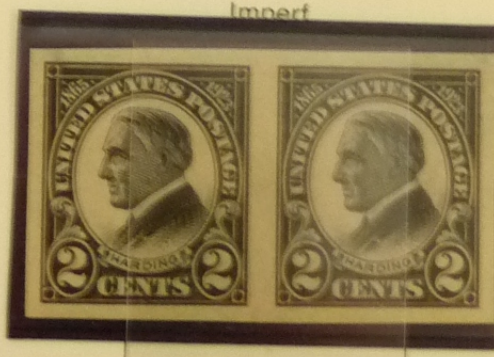
Harding Memorial Issue

1923

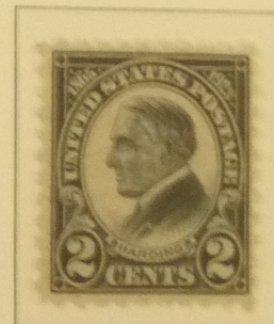
Perf. 11



Imperf



Rotary Perf. 10



19x22.5 mm

Huguenot-Walloon Tercentenary Issue

1924



1926

INTERNATIONAL PHILATELIC EXHIBITION OCTOBER 10th TO 23rd 1926



NEW

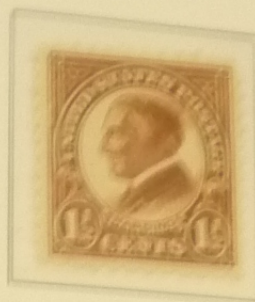
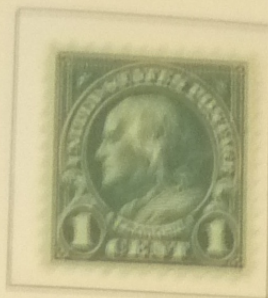
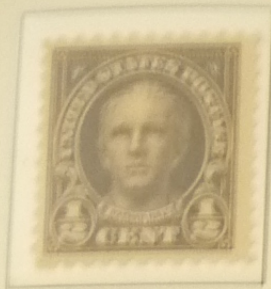
YORK

1871

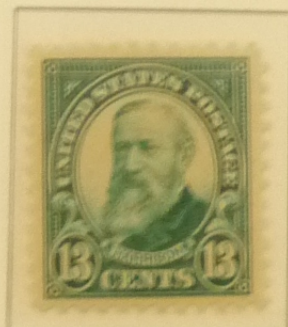
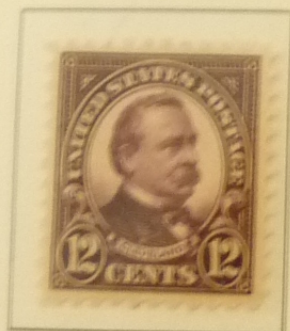
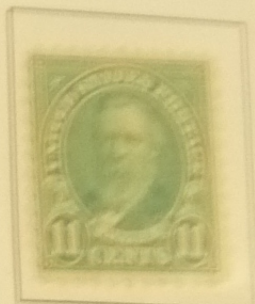
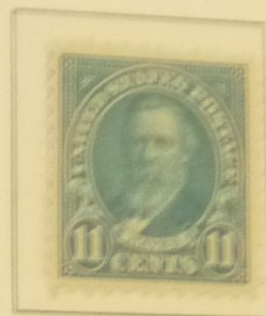
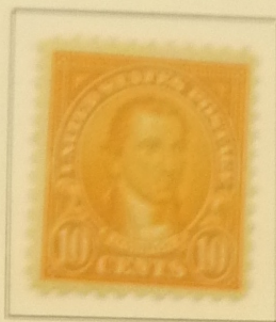
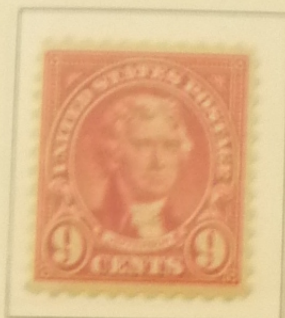
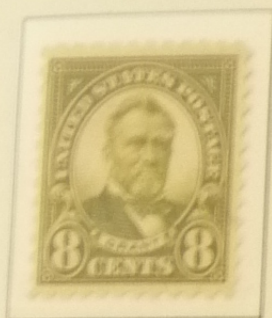
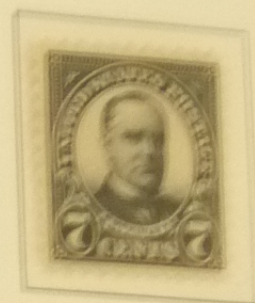
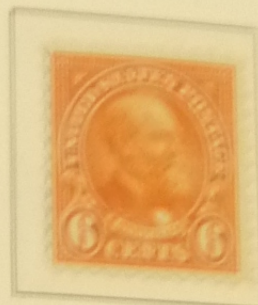
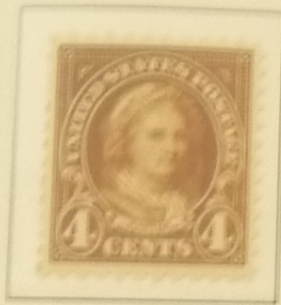
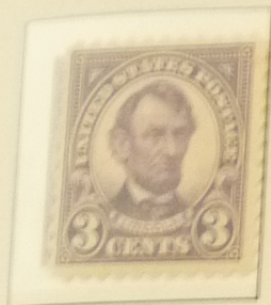
N.Y.

U.S.A.

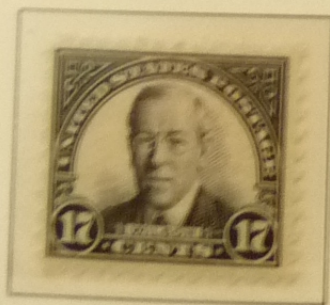
First U.S. Souvenir Sheet



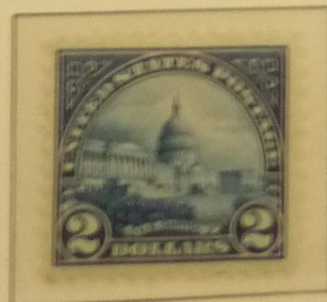
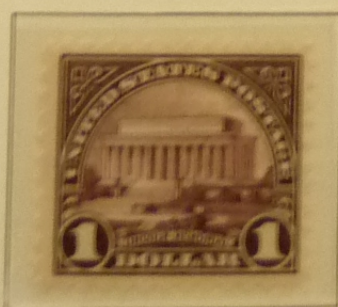
551



Sc. 622/SG 626

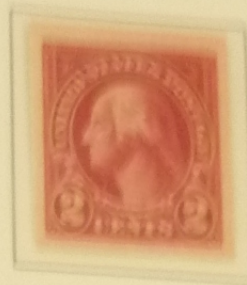


Sc. 623/SG 627



573

1923/26



18.5—19x22 mm

Unwmkd. — Rotary Press Printing — Var. Perfs.

1923

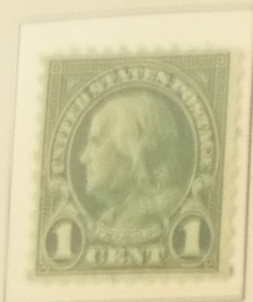
1926

1924

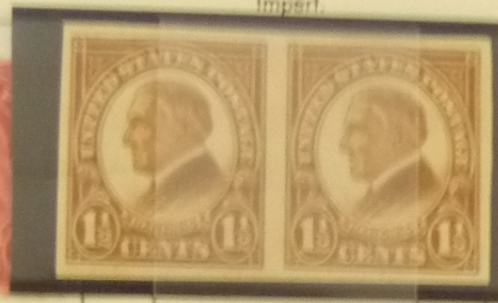
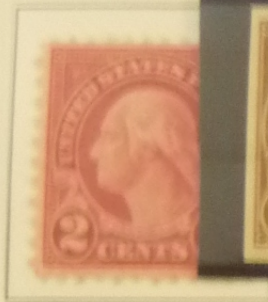
Perf. 11:10

Imperf.

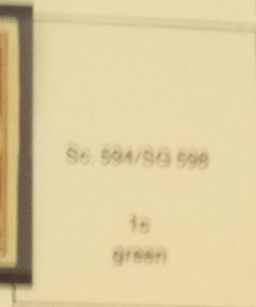
Perf. 11



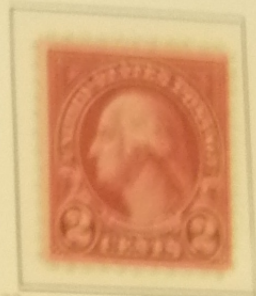
19.5—20x22 mm



18.5—19x22.5 mm



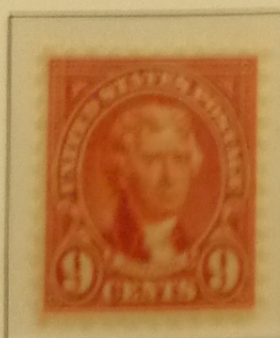
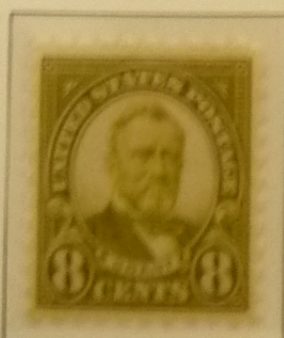
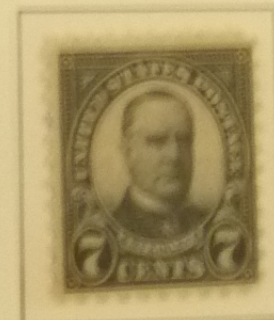
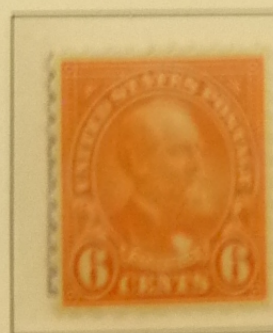
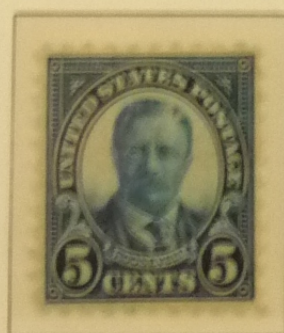
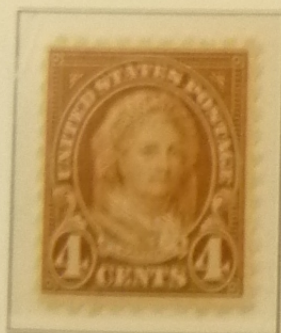
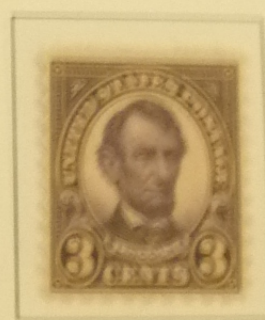
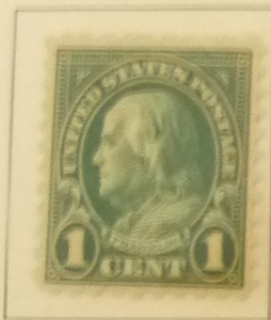
19.5—20x22 mm



18.5—19x22.5 mm

1923/26

Perf. 10



1926/34

634b



Sc. 632/SG 632



Sc. 632/SG 634



Sc. 633/SG 635



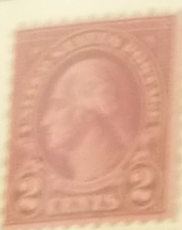
Sc. 634/SG 635



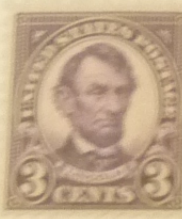
Sc. 634/SG 636



Sc. 634b/SG 636b



Sc. 634 A/SG 637

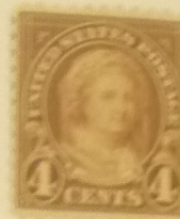


Sc. 635/SG 638

(violet)

←

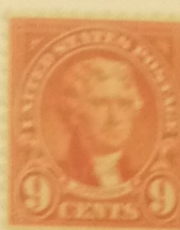
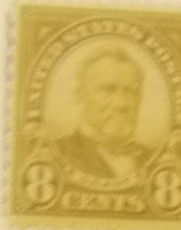
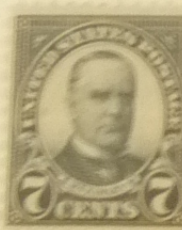
Re-issue
1934
3c
bright violet



Sc. 635/SG 636



Sc. 637/SG 640



Sc. 641b/SG 644

(1927)

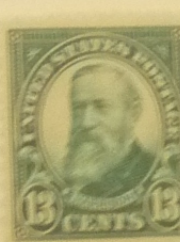
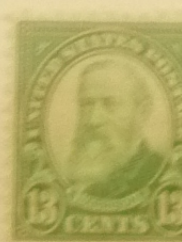
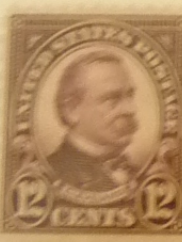
←

(1931)
9c
orange red

Sc. 641/SG 644b



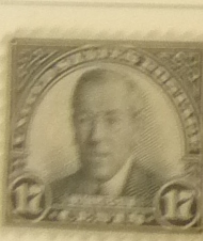
Sc. 692/SG 692



Sc. 694b/SG 694b

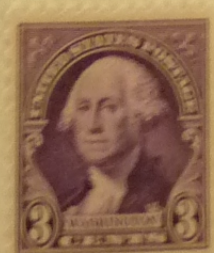


Perf. 10½:11



1932

Perf. 11:10½



Sc. 720/SG 720

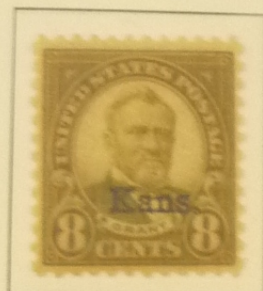
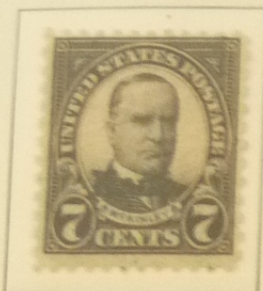
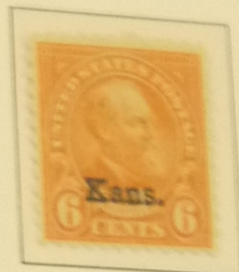
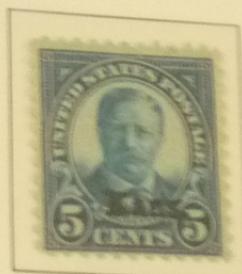
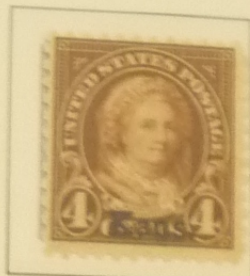
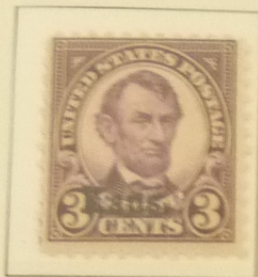
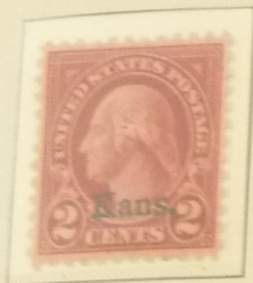
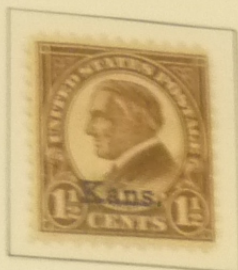
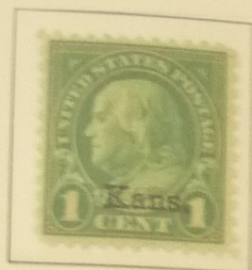
1929

Regular Issue of 1926—27

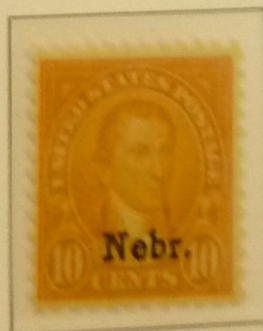
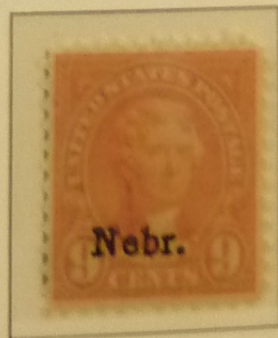
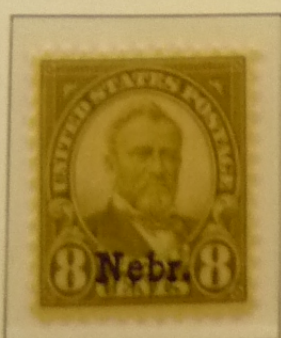
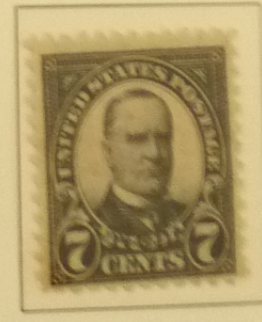
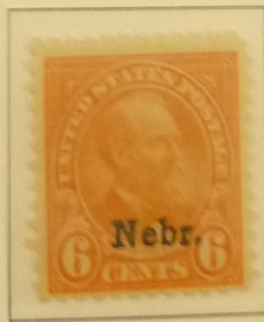
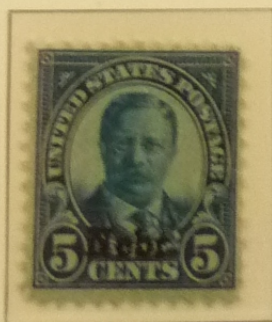
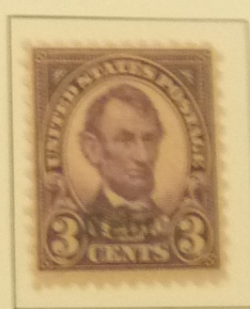
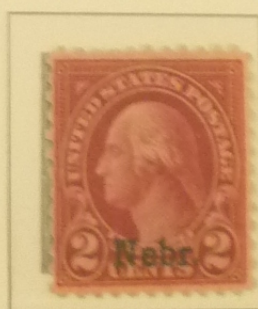
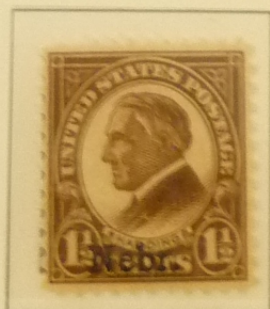
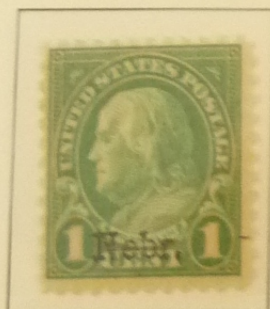
Overprinted Kans.

Rotary Press Printing

Perf. 11:10½



Overprinted Nebr.



UNITED STATES

1906-07

1896

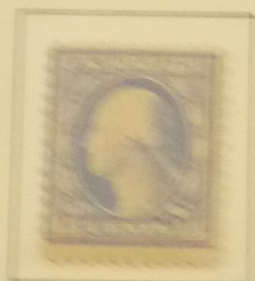
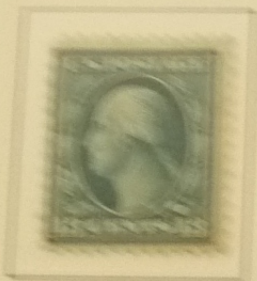
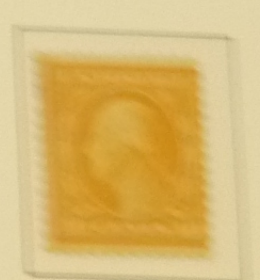
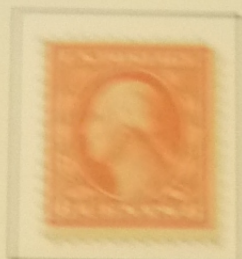
Double Line Watermark

Double Line Watermark

Post 10

35

Post 10



342

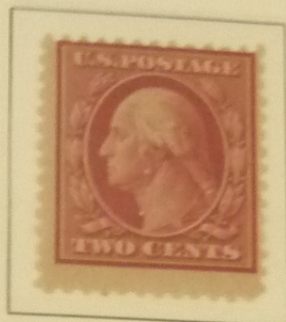
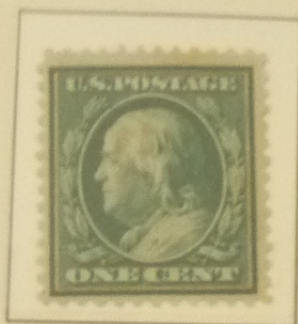
Imperialist

1908-09

Imperialist



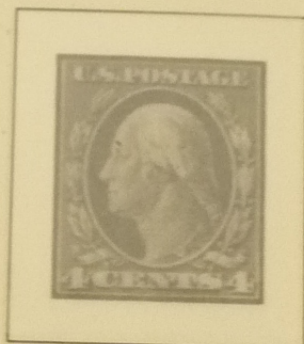
Double Line Wmk. — On Bluish Gray Paper — Perf. 12



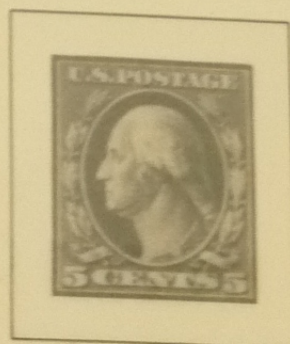
357



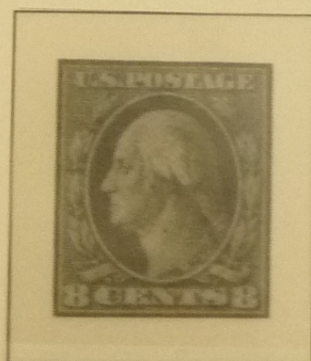
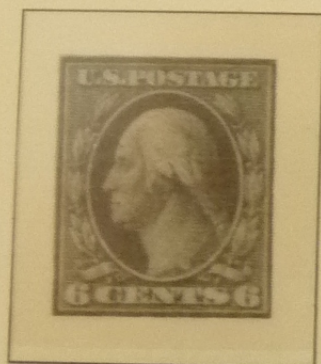
cert.



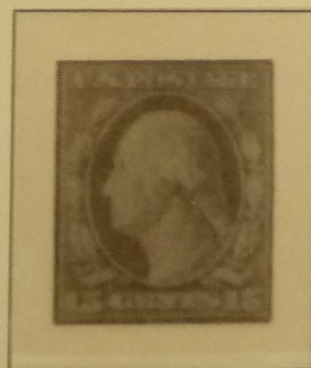
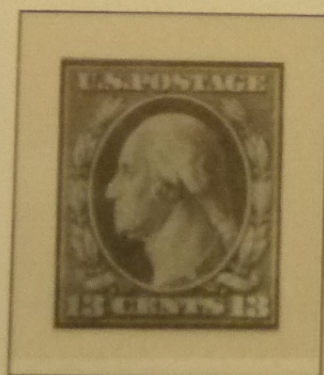
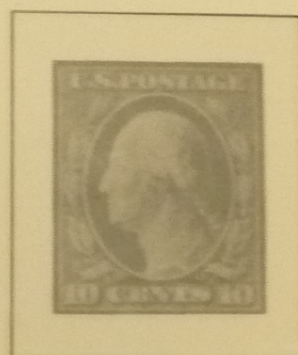
*



*



*

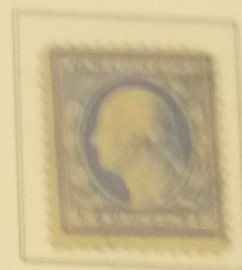


Single Line Wmk. 28PS Perf. 12

1810/11



374

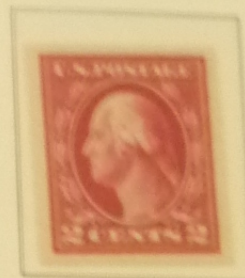
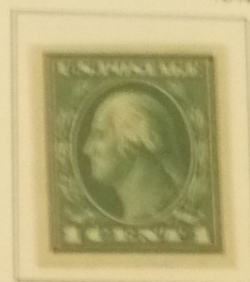
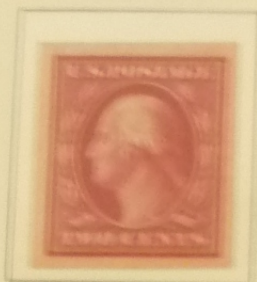
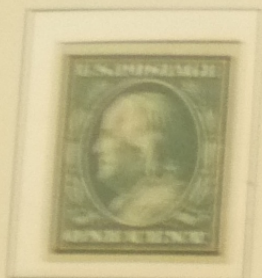


1811 Imperf.

Registration Stamp

1812 Imperf.

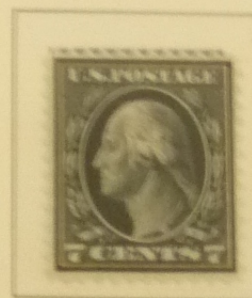
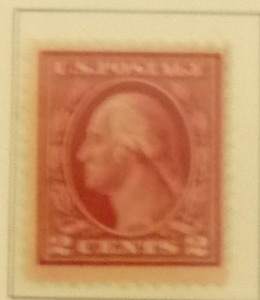
382



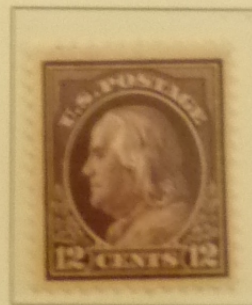
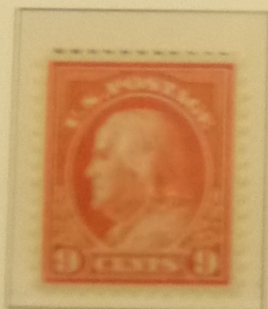
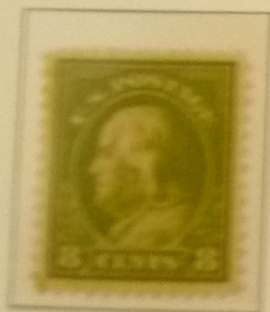
Single Line Wmk.

1812/14

Perf. 12



405



414



421

UNITED STATES

Watermark

USPS

Wasserzeichen

1912

Perf. 12 Gez.



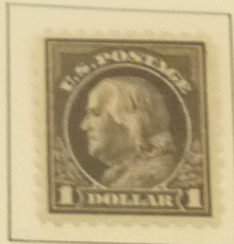
1912

Perf. 12 Gez.



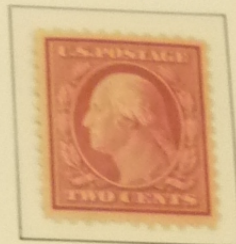
1915

Perf. 10 Gez.



1917

Perf. 11 Gez.



423

Watermark

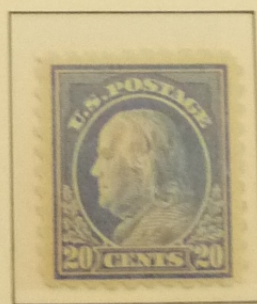
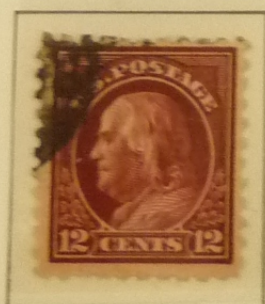
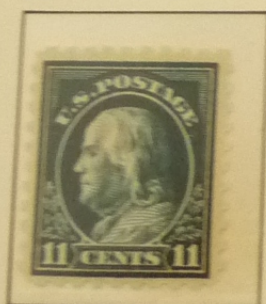
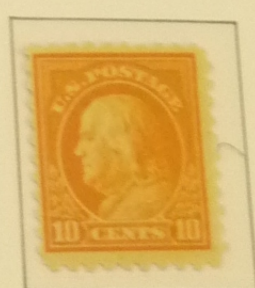
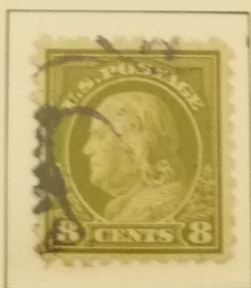
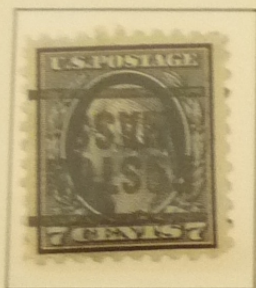
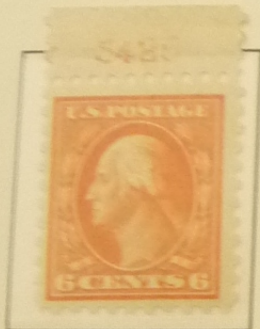
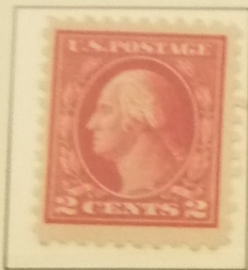
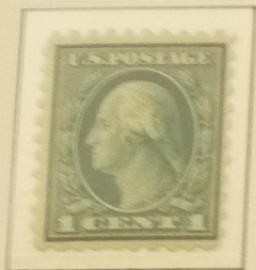
USPS

460

Wasserzeichen

519

1914/15



1914

Imperf.-Geschn.



435a

459



440

1915

Perf. 11 Gez.



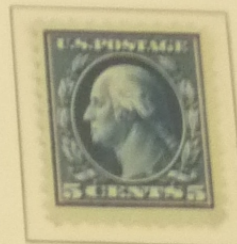
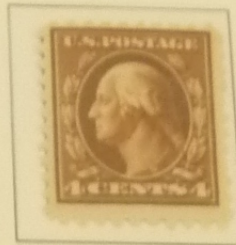
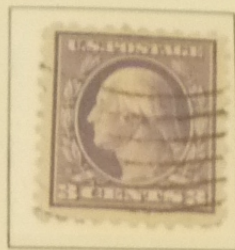
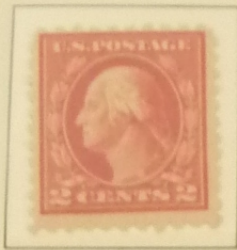
461 art

UNITED STATES

1916/17

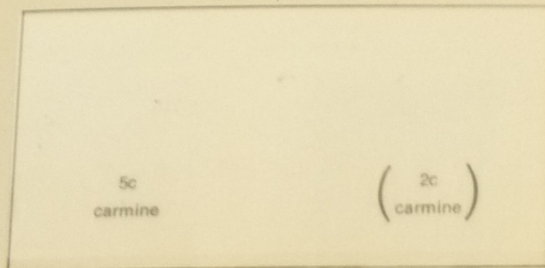
Unwatermarked — Flat Plate Printing — Perf. 10

18.5—19 x 22 mm

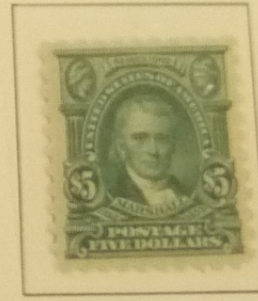
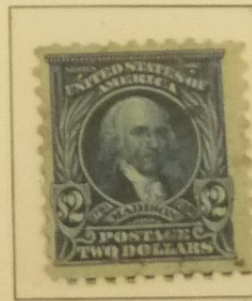
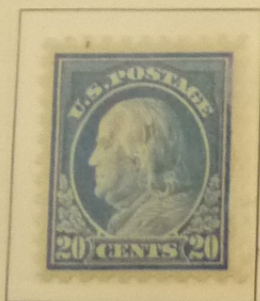
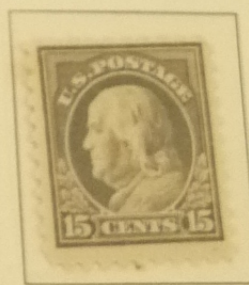
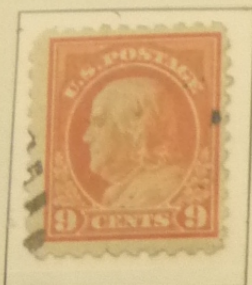


462

Error in plate of 2c



467 see block



Imperforated

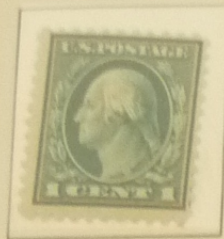


UNITED STATES

1917/19

Unwatermarked — Flat Plate Printing — Perf. 11

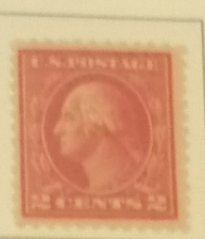
18.5—19 x 22 mm



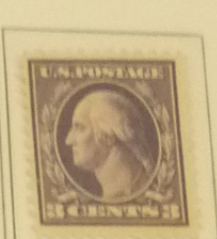
(green)
←

1c
dark green

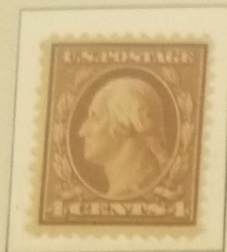
498



50c cert.



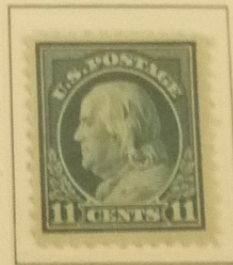
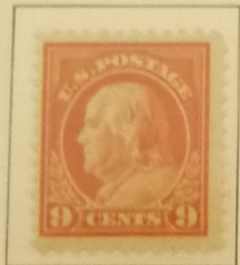
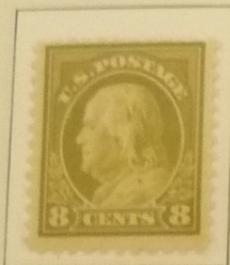
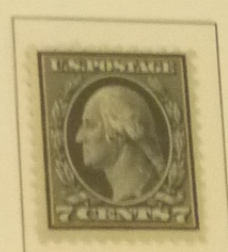
Error



(blue)
←

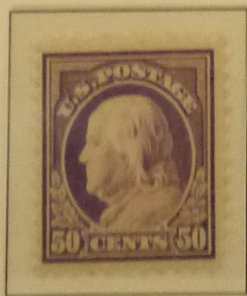
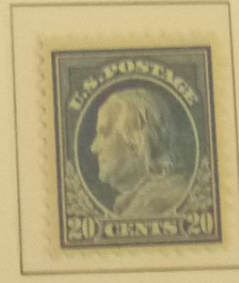
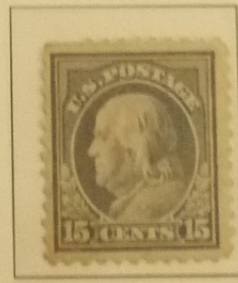
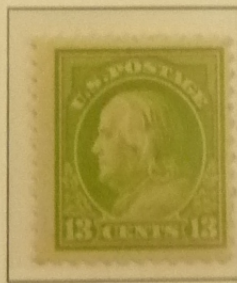
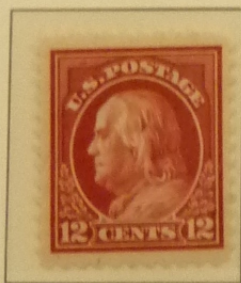
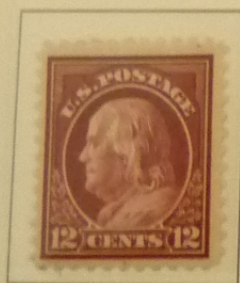
5c
rose

505 see block



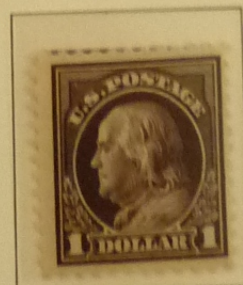
(light green)
←

11c
dark green

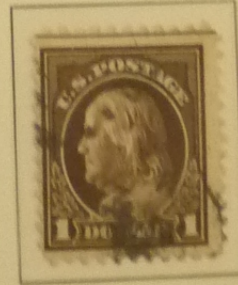


(red violet)
←

50c
light violet



518



518 b cert.

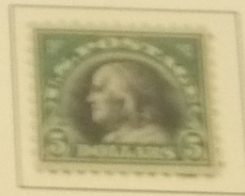
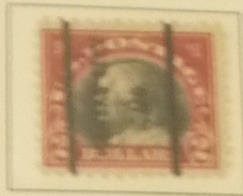
UNITED STATES

Unwmkd. — Flat Plate Printing — Perf. 11

1918

1920

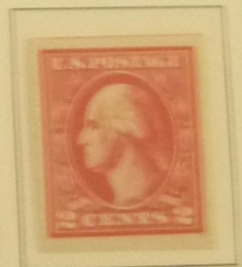
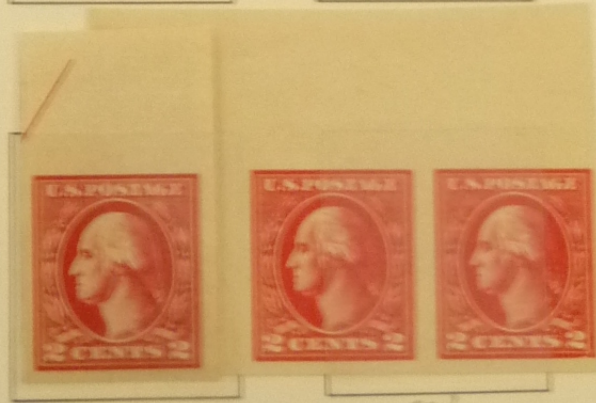
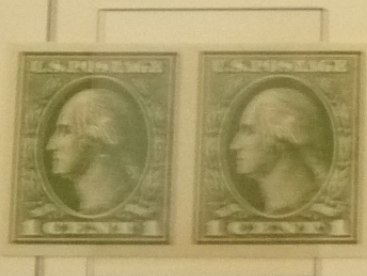
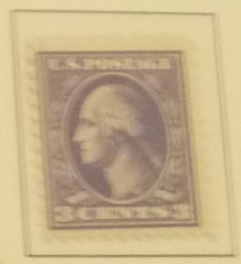
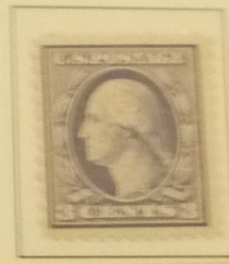
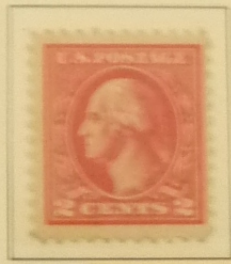
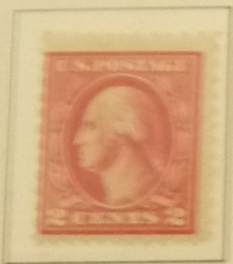
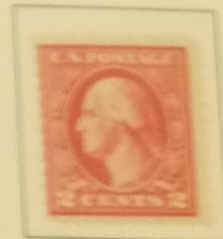
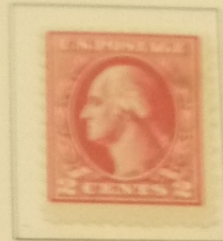
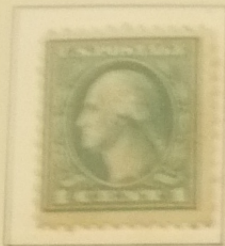
1918



copy below

Unwmkd. — Offset Printing — Perf. 11

1918/20



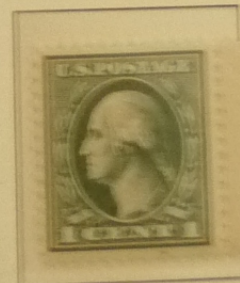
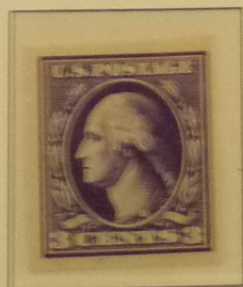
532

533

534

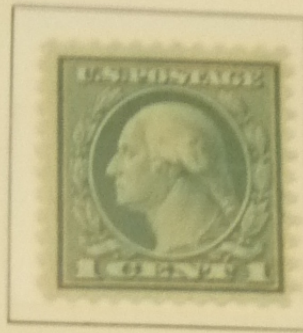
534A

Perf. 12½

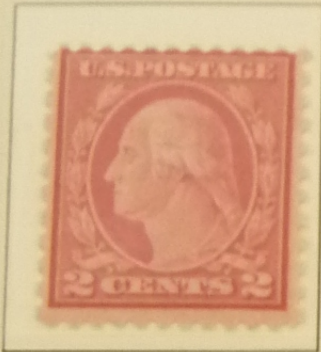


534B*

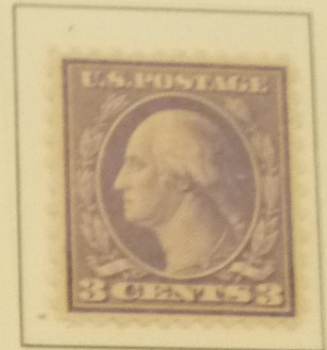
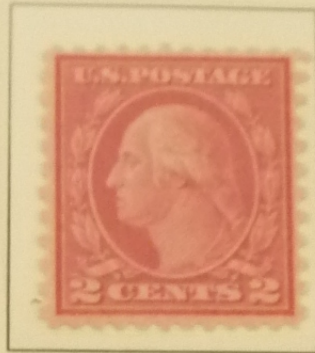
1919



19.5—20x22 mm



Cert. 539*



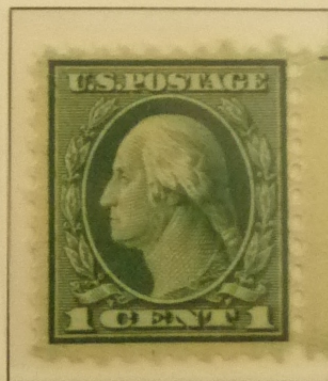
1920/21

10.11

Perf. 11:10



Perf. 10

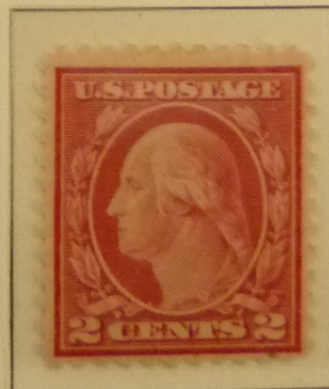
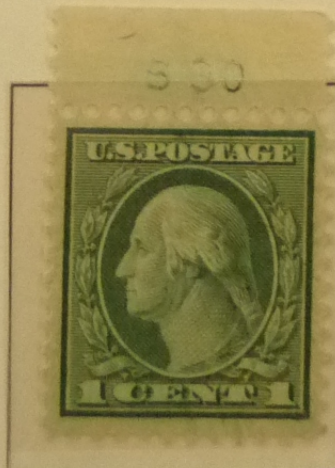


Perf. 11



544* cert.

Perf. 11





467 b



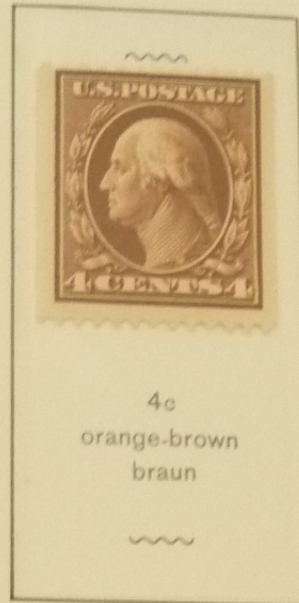
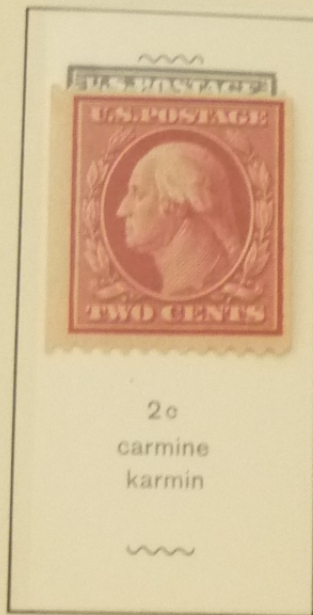
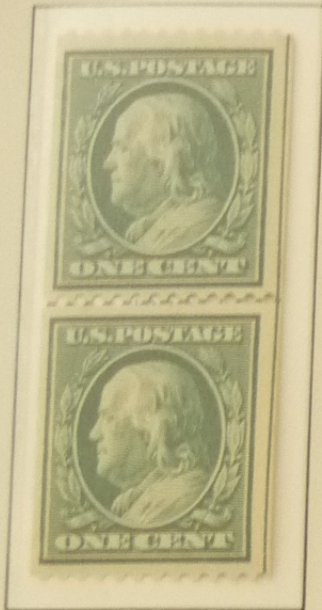
505 b

1908/10

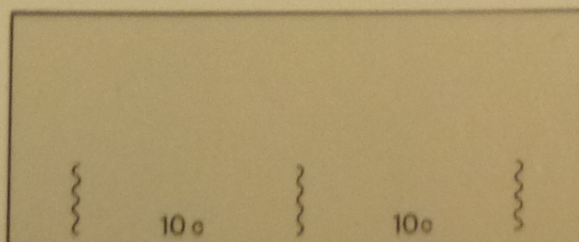
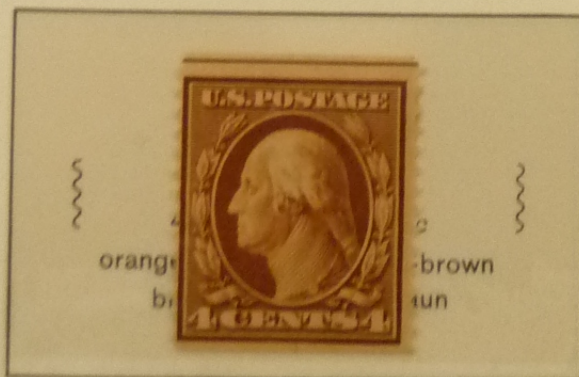
Double Line Watermark

USPS

Zweiliniiges Wasserzeichen



1909



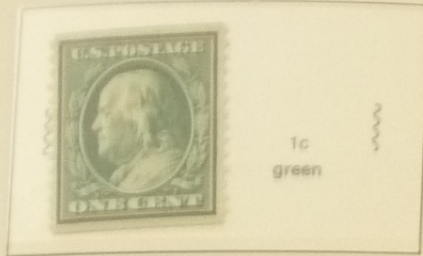


UNITED STATES

Coil Stamps

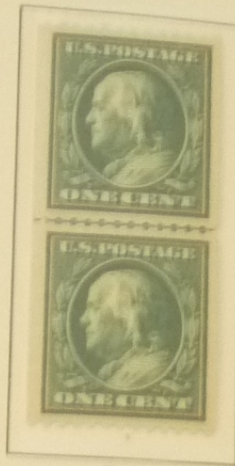
USPS

Single Line Wmk.

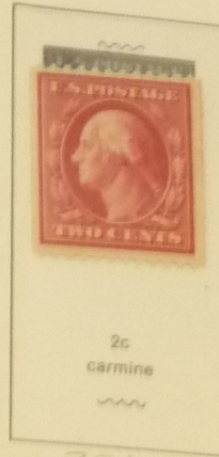


1c
green

387



385



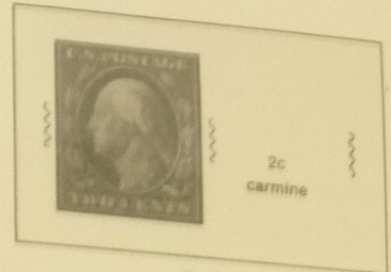
2c
carmine

386

389 cert. 4

1910/11

Perf. 12

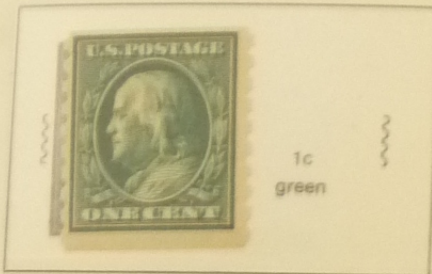


2c
carmine

388

USPS

Single Line Wmk.



1c
green

392



390

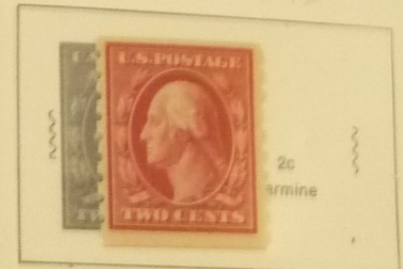


391

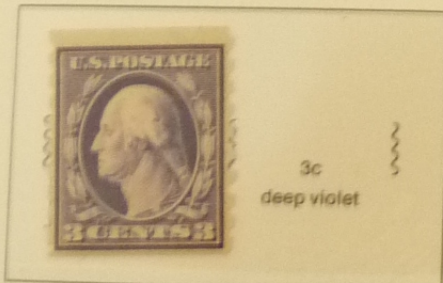
1910/13

Perf. 8 1/2

393

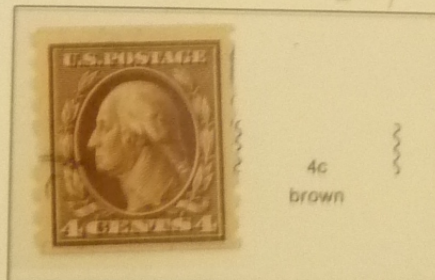


2c
carmine



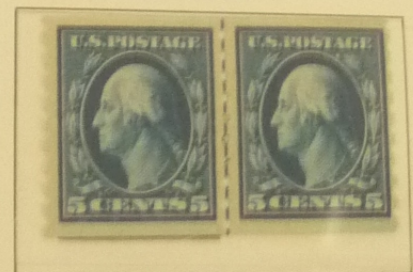
3c
deep violet

394



4c
brown

395



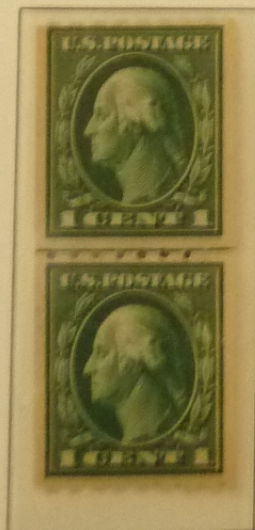
396 cert

USPS

Single Line Wmk.



412



410



2c
carmine

411

1912

Perf. 8 1/2



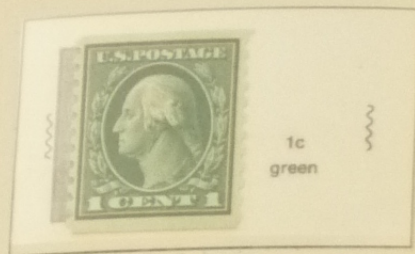
413

UNITED STATES

Coil Stamps

USPS

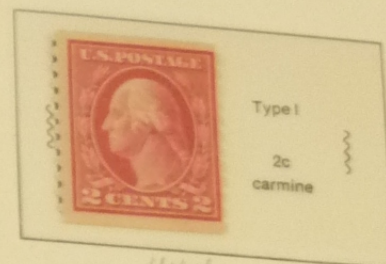
Single Line Wmk.



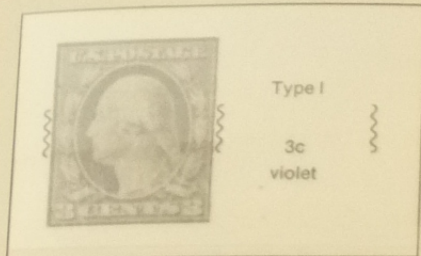
1c
green



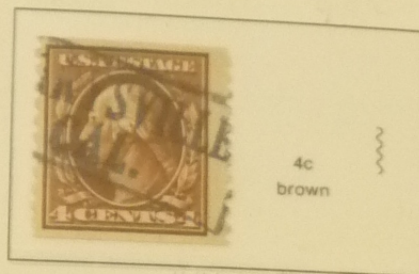
1914
Perf. 10
Flat Plate Printing
18.5—19 x 22 mm



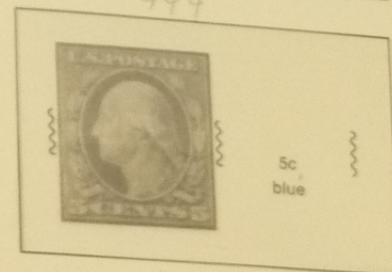
Type I
2c
carmine



Type I
3c
violet

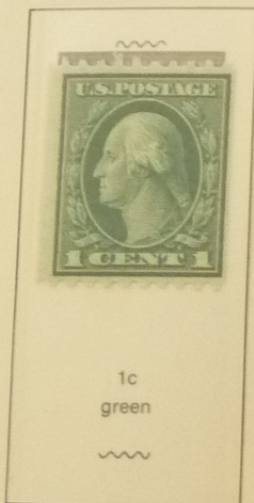


4c
brown



5c
blue

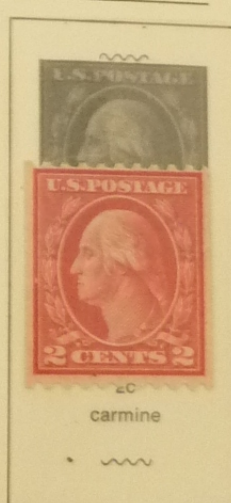
18.5—19 x 22.5 mm



1c
green

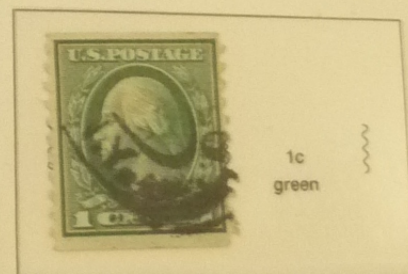


2c
red



2c
carmine

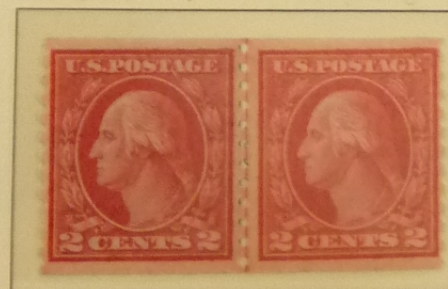
1914/16
Perf. 10
Rotary Press Printing
19.5—20 x 22 mm



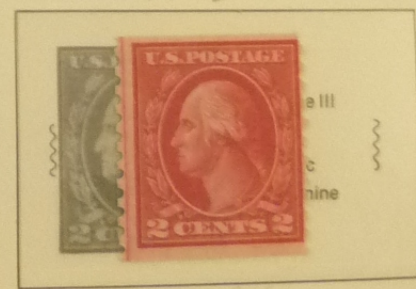
1c
green



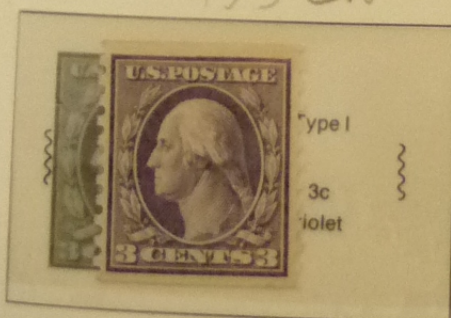
449 cert



454

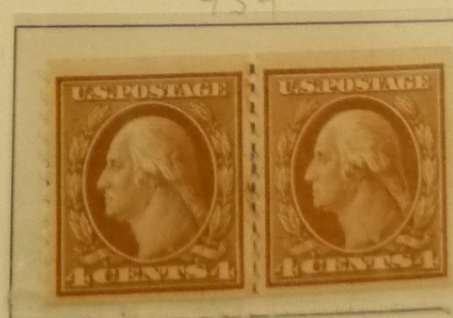


455

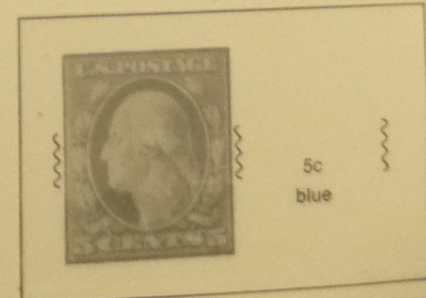


Type I
3c
violet

456



457



5c
blue

458

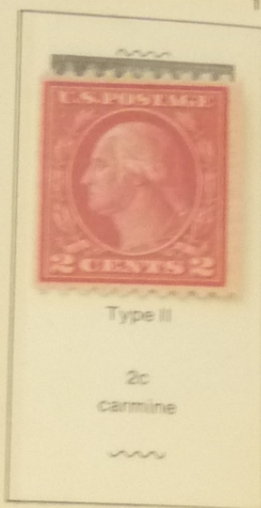
18.5—19 x 22.5 mm

1916/19

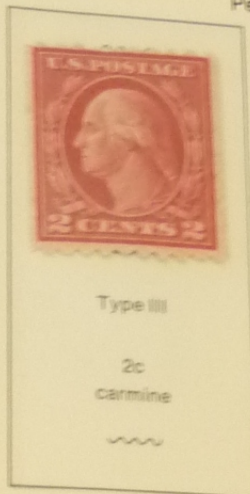
Perf. 10



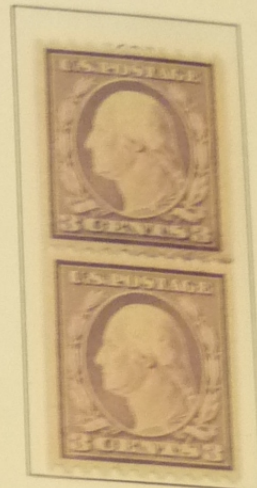
486



487



488

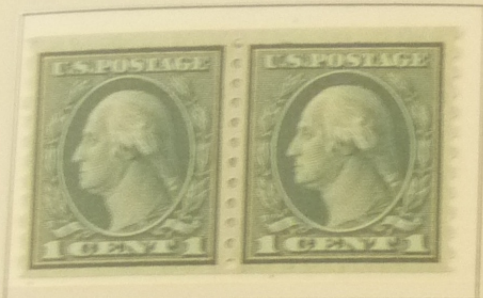


489

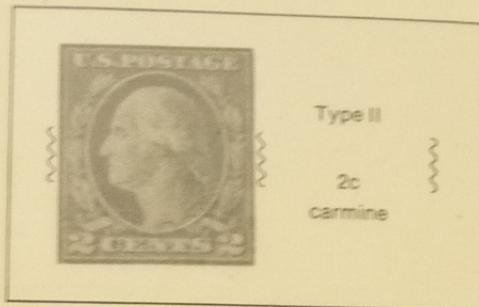
19.5—20 x 22 mm

1916/22

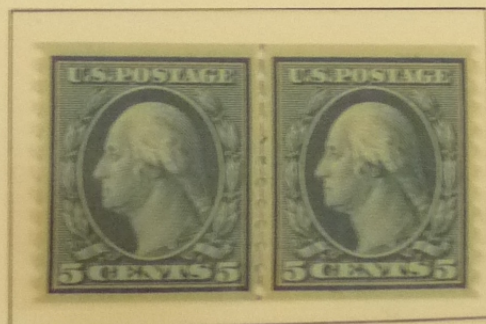
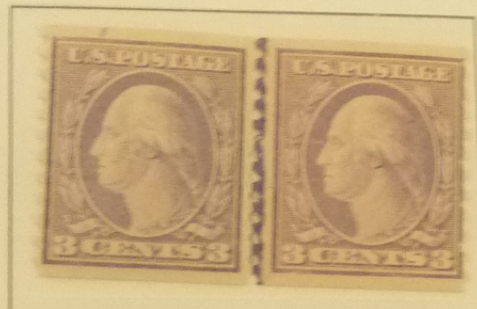
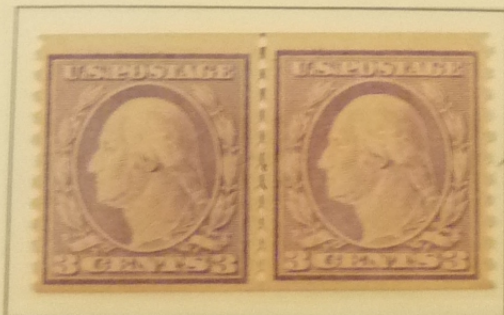
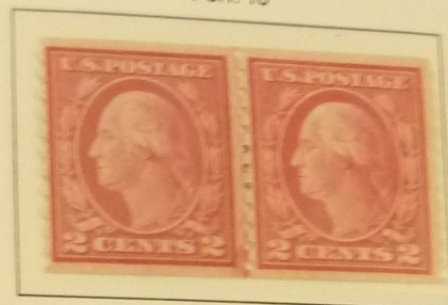
Perf. 10



490



491 *



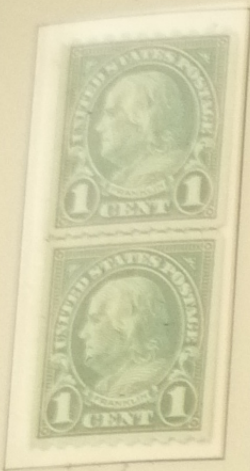
UNITED STATES

Coil Stamps

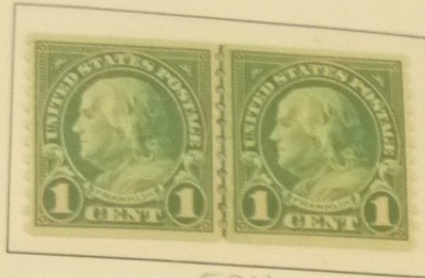
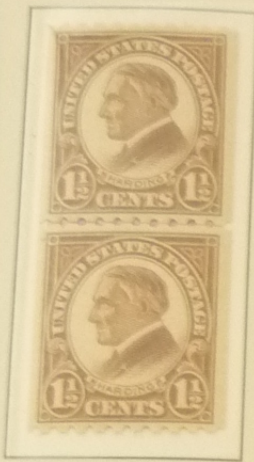
Rotary Press Printing

Perf. 10

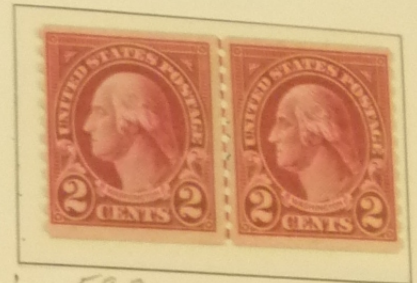
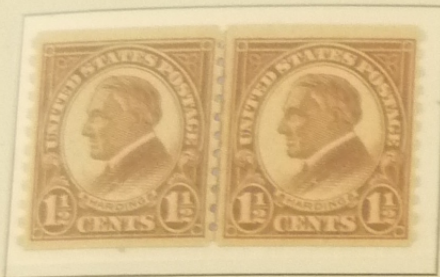
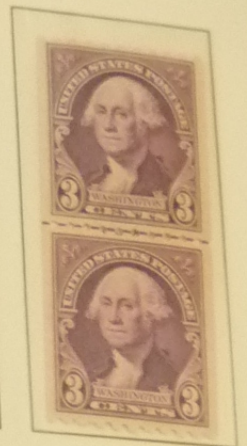
1923/32



604

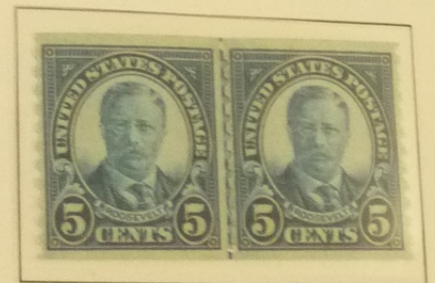


597



599

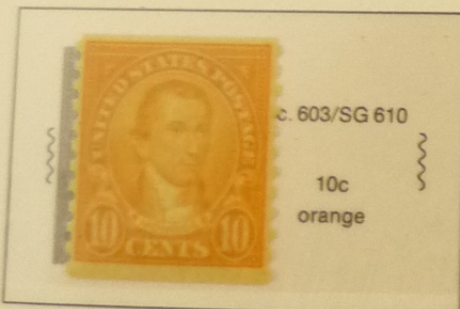
599A



1924

1930

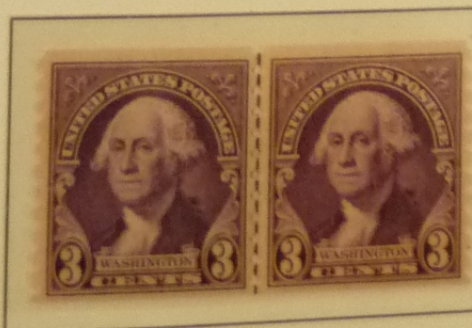
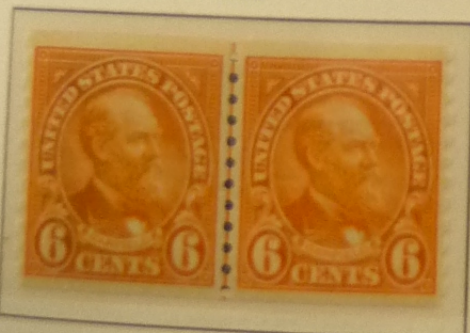
1930



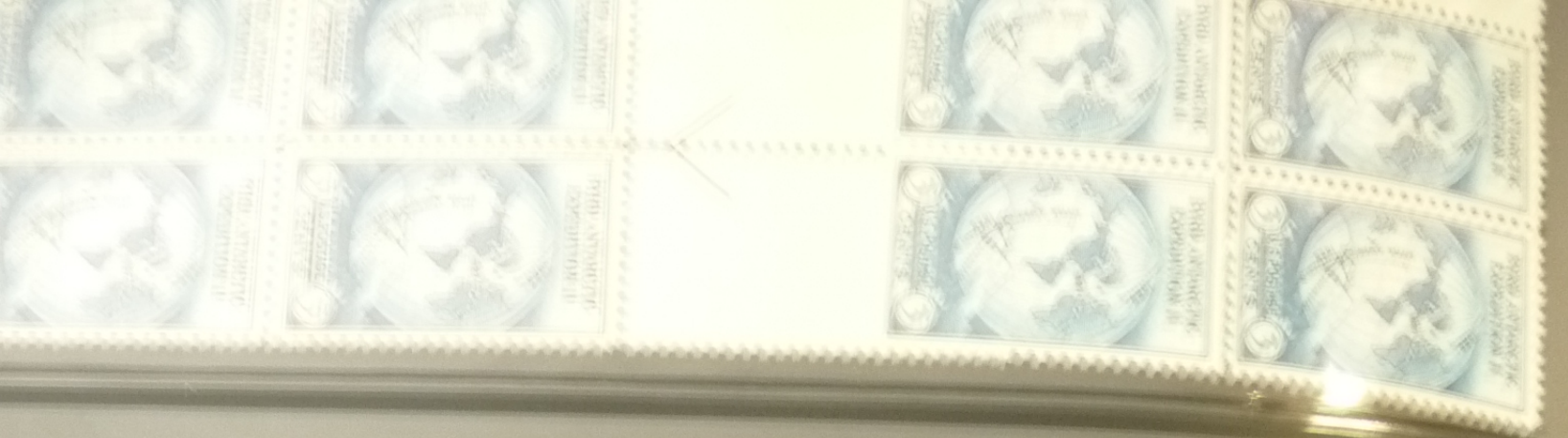
1932

1932

1929



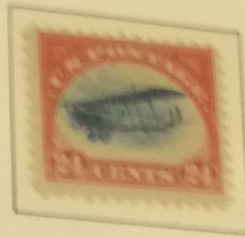
721



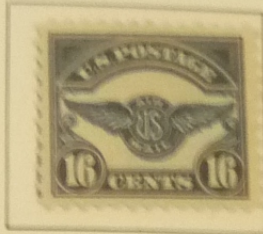
UNITED STATES

Air Post Stamps - Luftpostmarken

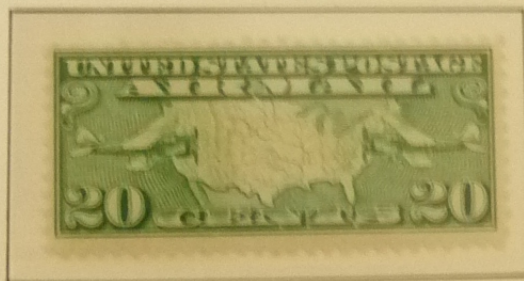
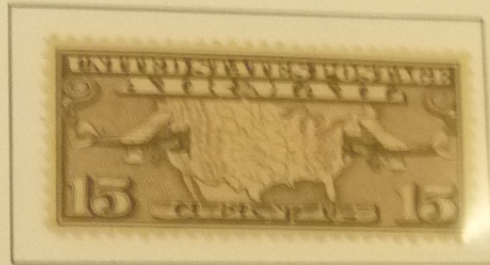
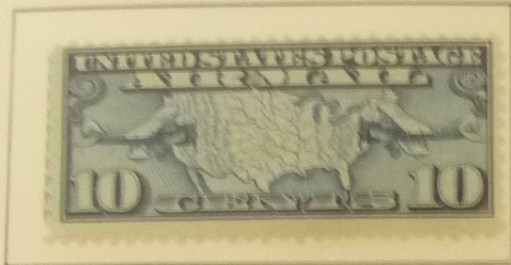
1918



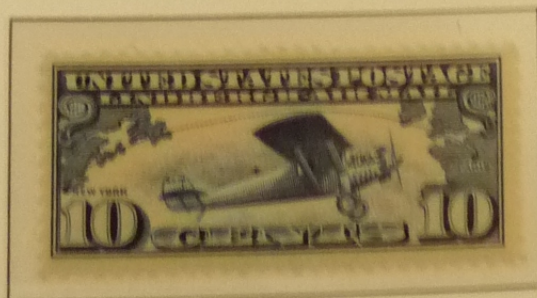
1923



1926/27



1927



1930



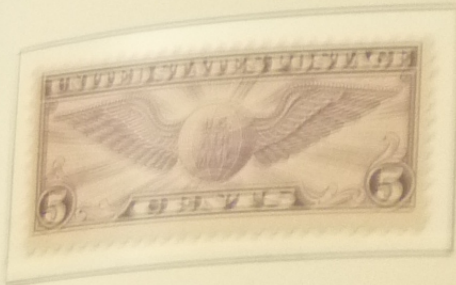
Air Post Stamps Luftpostmarken

1928



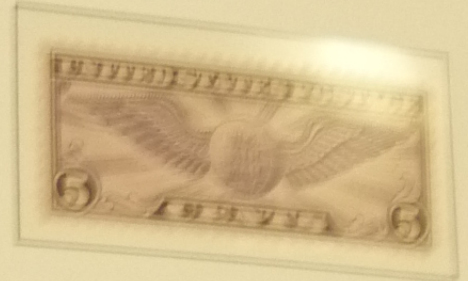
1930

Post 31 Cez



1931

Post 40 1/2 31 Cez



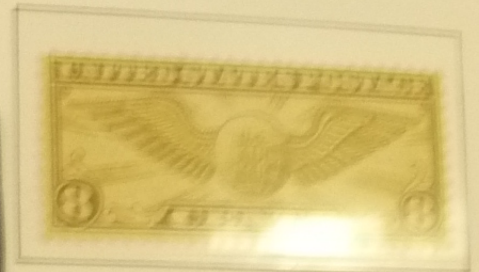
1935



1934



1932



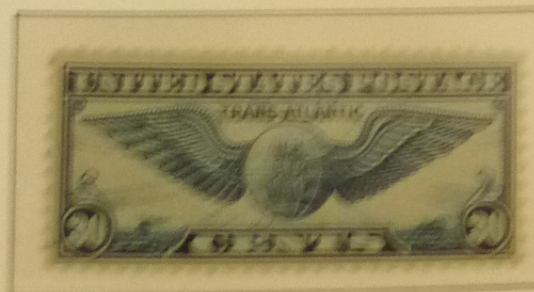
1937



1937



1939



Unwatermarked - Perf. 12

1885



1888



1893



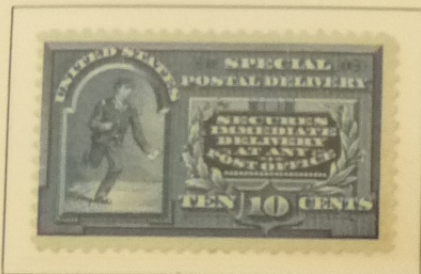
1894



Line under "TEN CENTS"

Double Line USPS Wmk. - Perf. 12

1895



1908



1902



Single Line USPS Wmk.

1911

Perf. 12



1914

Perf. 10



Unwatermarked

1916

Perf. 10



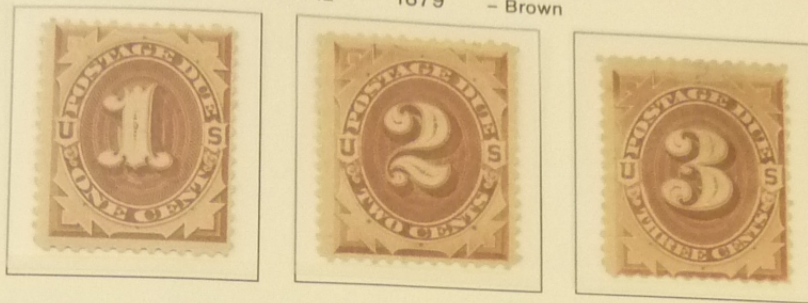
1917

Perf. 11



Postage Due Stamps

Perf. 12 - 1879 - Brown



J1



Perf. 12 - 1884/89 - Red Brown

J7

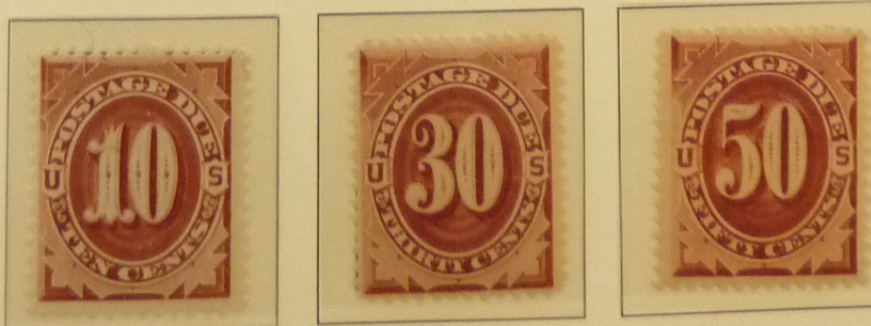


J15



J21

Perf. 12 - 1891/93 - Claret

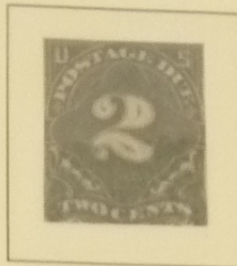


Postage Due Stamps

(Observe care in soaking stamps; colors liable to run)



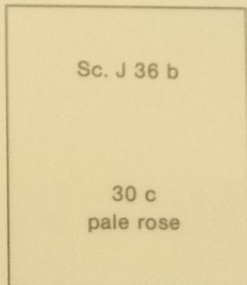
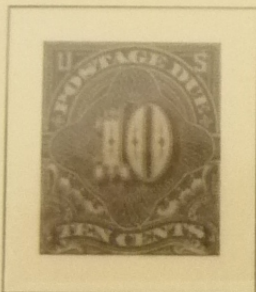
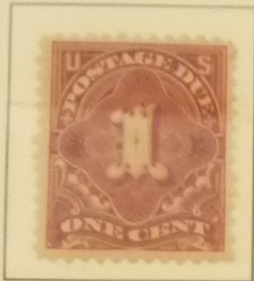
1894 - Perf. 12, Vermillion



cert. J29

J31

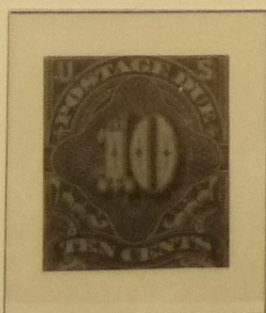
Unwatermarked - 1894/95 - Perf. 12, Deep Claret



J37

J38

Double Line Wmk. USPS - 1895/97 - Perf. 12, Deep Claret



44



Single Line Wmk. USPS

1914/15

Perf. 10, Carmine Lake

J50

J52



Unwatermarked

1916

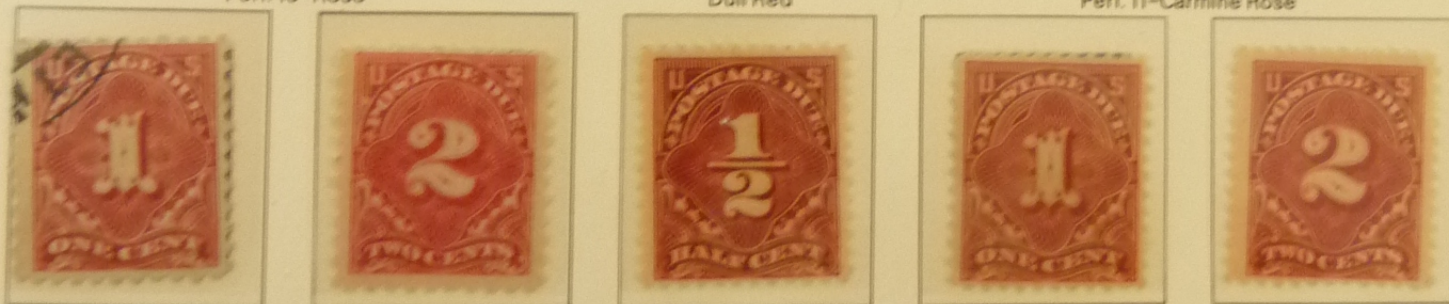
1925

1917/23

Perf. 10-Rose

Dull Red

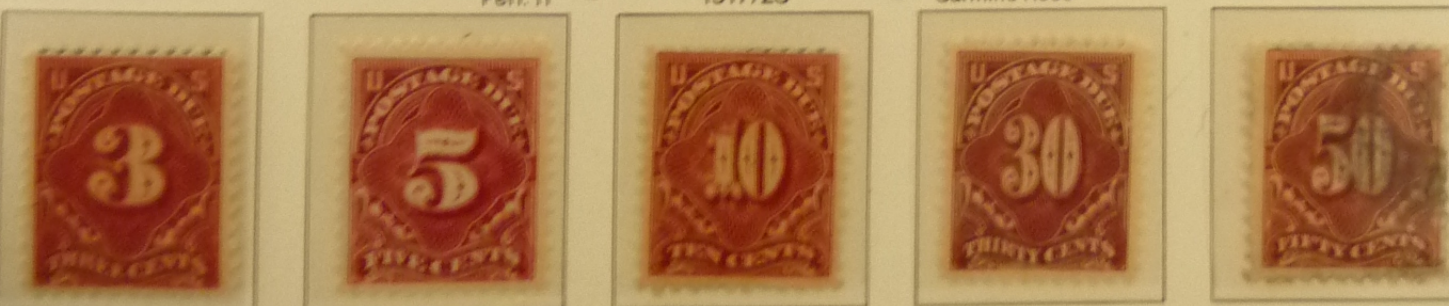
Perf. 11-Carmine Rose

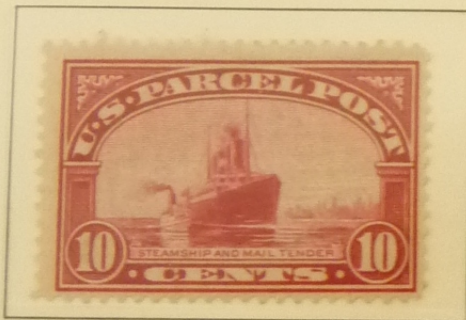
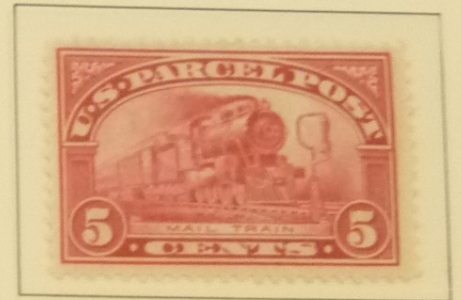


Perf. 11

1917/23

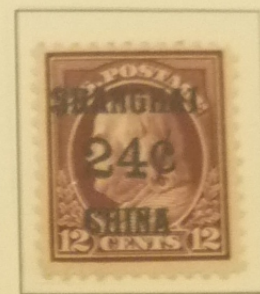
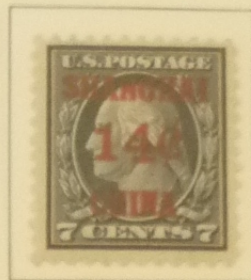
Carmine Rose







NH



K16 cert

Local Surch.

1922

Perf. 11



UNITED STATES POSTAGE
1873
Department of Agriculture



Executive Department



Department of the Interior



OFFICIAL

Printed by the Continental Bank Note Co.
1873

Department of Justice



Navy Department



OFFICIAL

Printed by the Continental Bank Note Co.
1873

Post Office Department



State Department



cert 4

cert.

cert.

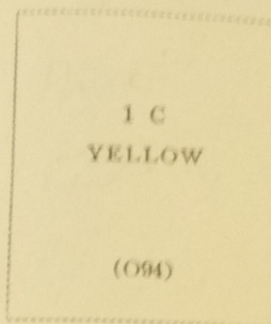
Treasury Department



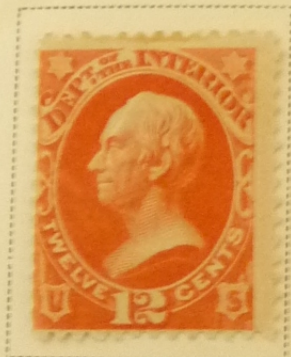
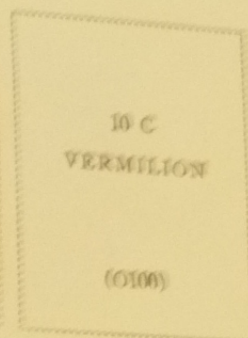
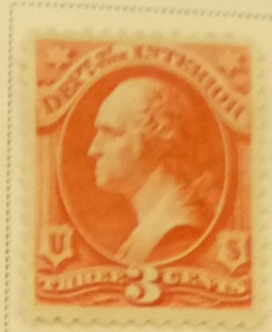
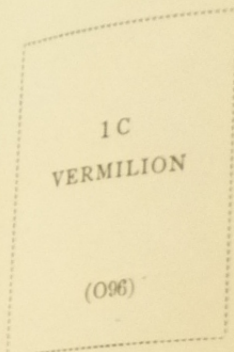
War Department



Department of Agriculture

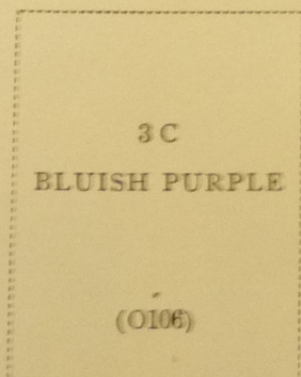


Department of the Interior

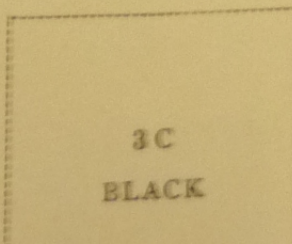


cert.

Department of Justice

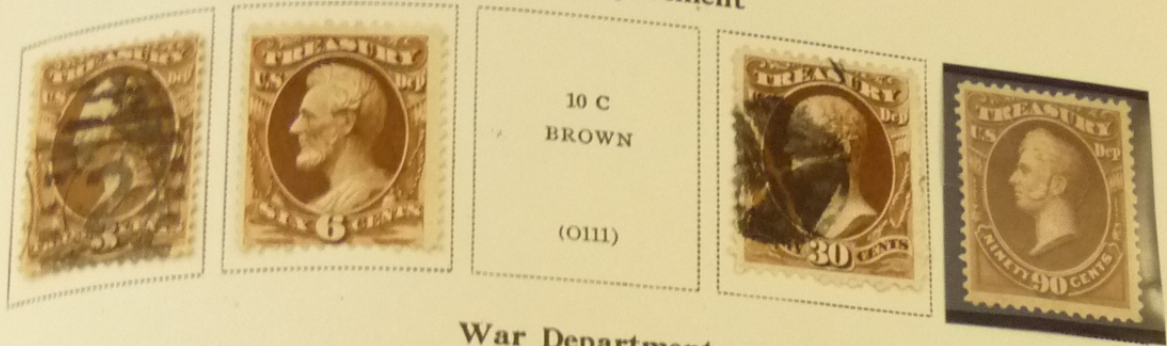


Post Office Department



1879
Printed by the American Bank Note Co.
Soft Porous Paper

Treasury Department



War Department



REMOVED

Postal Savings

1910-11

Printed by the Bureau of Engraving and Printing
Watermarked USPS



Watermarked USPS

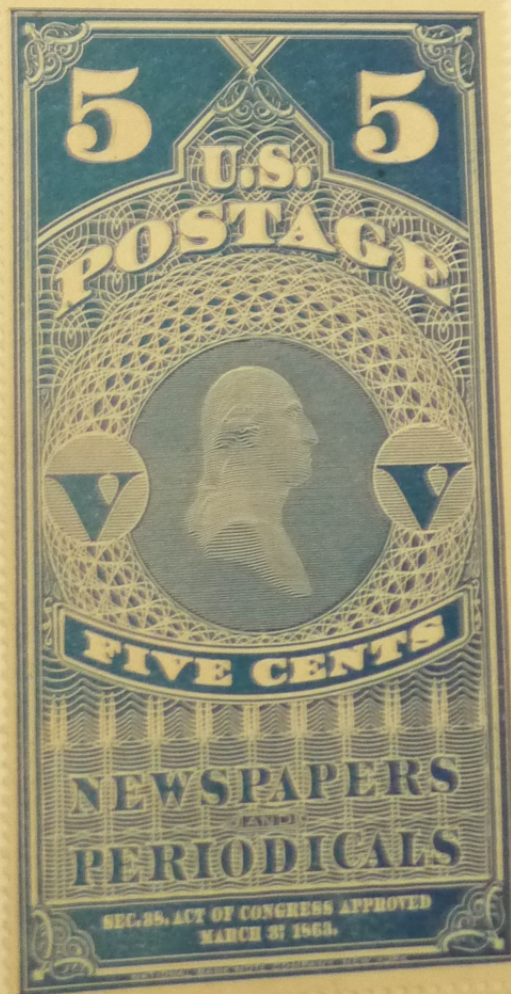
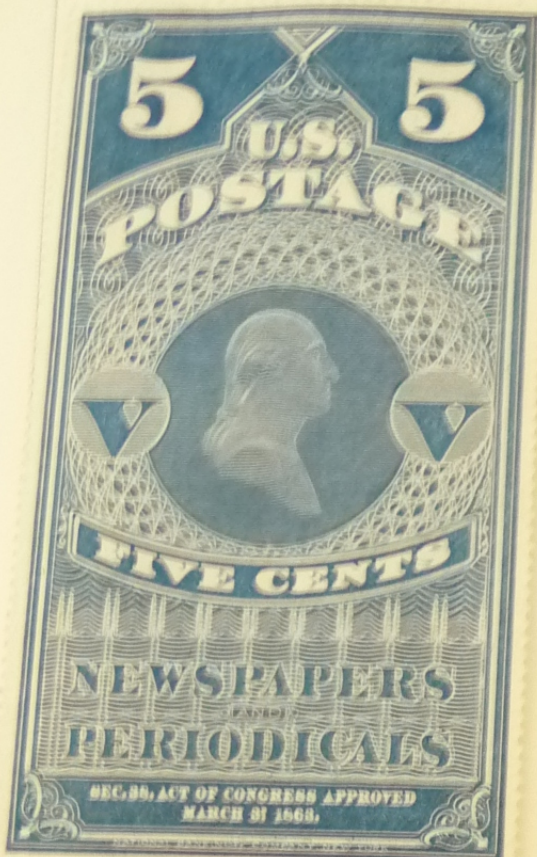


this hard paper



P. 36 Pelure Paper

Handwritten paper



Soft porous

NEWSPAPERS AND PERIODICALS

Printed by the Continental Bank Note Co.
1875

thin hard paper



cert.
CART

STAMPS AND PERIODICALS () No. Issued

Special Printing of Issue of 1875
Printed by the Continental Bank Note Co.

1875

Handwritten paper
no gum



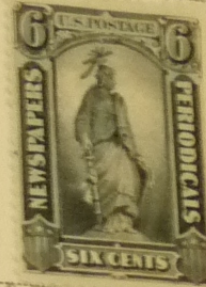
APS



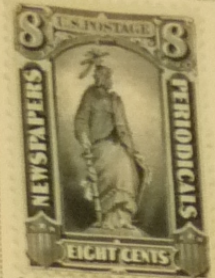
APS



APS



APS



APS



PF

10 C
GRAY BLACK
(1499)

(PR39)



APS



PF



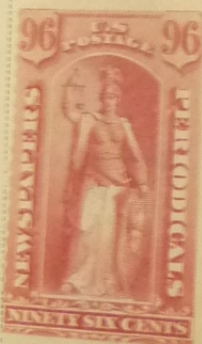
48 C
PALE ROSE
(268)
*
(PR43)

60 C
PALE ROSE
(222)
*
(PR44)

72 C
PALE ROSE
(174)
*
(PR45)

84 C
PALE ROSE
(164)
*
(PR46)

ALL
WITH
CERTS



APS

\$1.92
DARK BROWN
(41)
(PR48)

\$3
VERMILION
(20)
(PR49)

\$6
ULTRAMARINE
(14)
(PR50)

\$9
YELLOW
(4)
(PR51)

\$12
BLUE GREEN
(5)
(PR52)

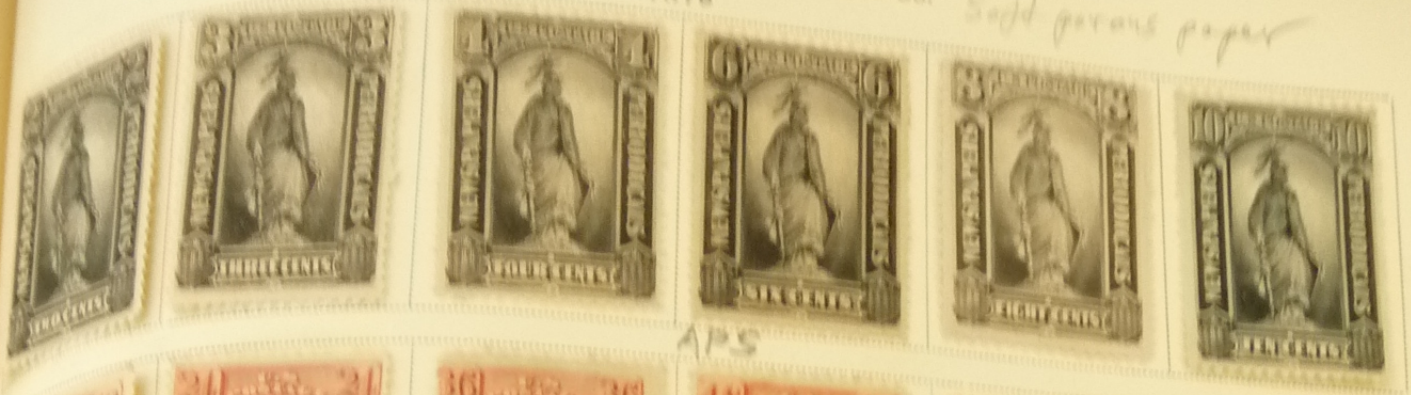
\$24
DARK
GRAY VIOLET
(2)
(PR53)

\$36
BROWN ROSE
(2)
(PR54)

\$48
RED BROWN
(1)
(PR55)

\$60
VIOLET
(1)
(PR56)

Soft green paper



APS



APS



8 C
RED

80 C
RED

(PR60)

(PR70)



art.

1888

Special Printing of Issue of 1879



*Soft porous paper
No Gum*



12 C
CARMINE

(PR89)

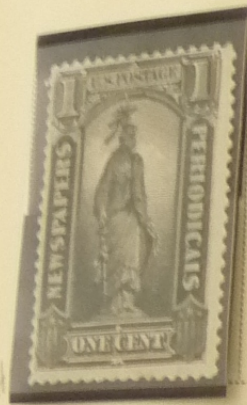


1894

Printed by the Bureau of Engraving and Printing

Soft wave paper

475



2 C
INTENSE BLACK

(PR91)

4 C
INTENSE BLACK

(PR92)

6 C
INTENSE BLACK

(PR93)



cert

12 C
PINK

(PR95)



36 C
PINK

(PR97)

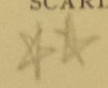
60 C
PINK

(PR98)

96 C
PINK

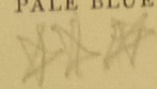
(PR99)

\$3
SCARLET



(PR100)

\$6
PALE BLUE



(PR101)

NEWSPAPERS AND PERIODICALS
 Printed by the Bureau of Engraving and Printing
 1895-97 *no watermark*



Watermarked USPS

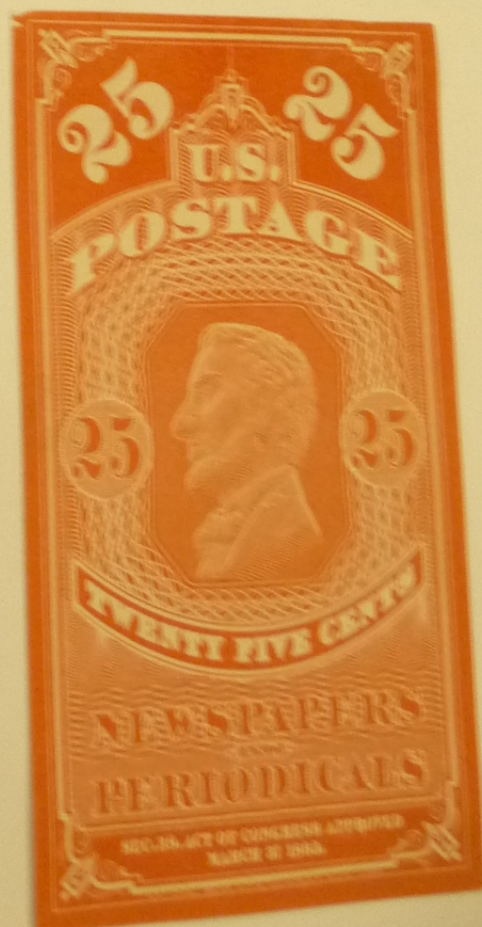
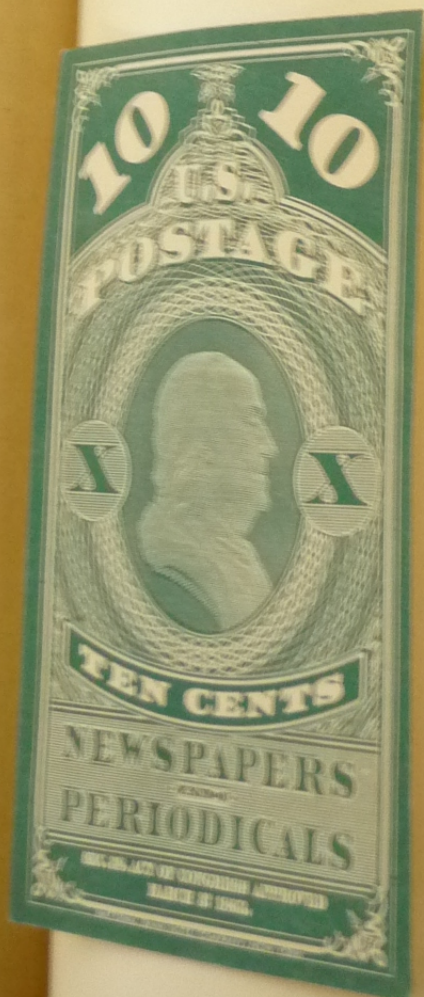
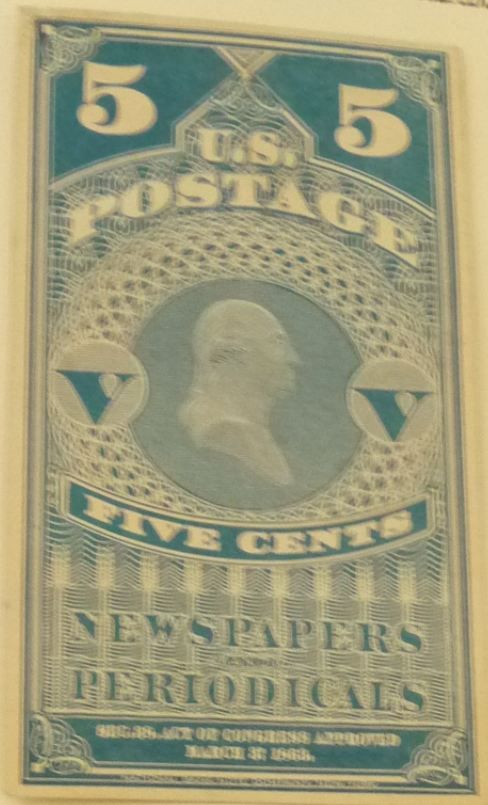


1899

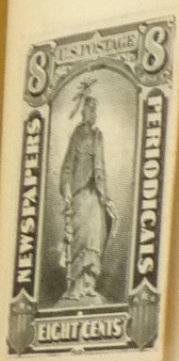
Reprints of 1895 Issue
 Watermarked USPS



PROOFS
1865 NEWSPAPERS PLATE CARDS



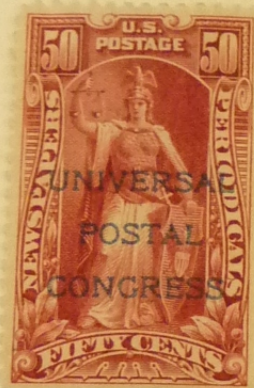
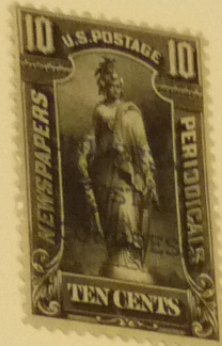
1865 NEWSPAPERS CARDS

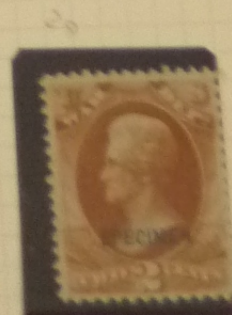
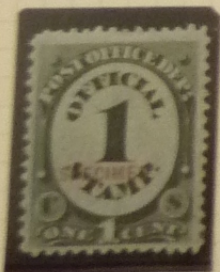
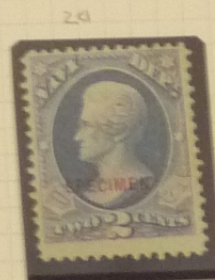
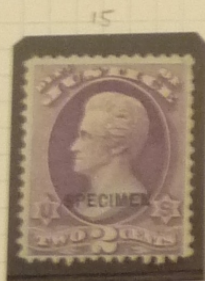
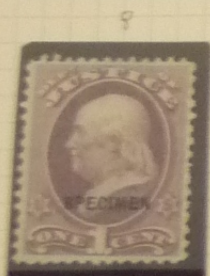
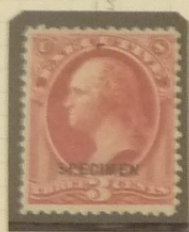
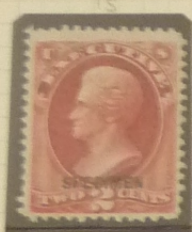




1897 NEWSPAPERS

OVERPRINTED UNIVERSAL POSTAL CONGRESS







THE PHILATELIC FOUNDATION

21 EAST 40TH STREET
NEW YORK, N.Y. 10016
EXPERT COMMITTEE

No. 0255979
3/27/92

We have examined the enclosed item, of which a photograph is attached, and described by the applicant as follows:

Country: UNITED STATES OF AMERICA

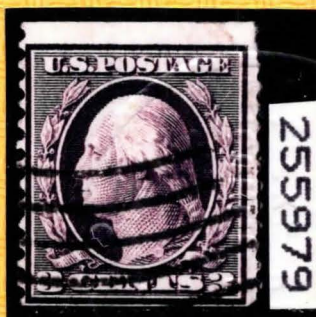
<u>Cat. No.</u>	<u>Issue</u>	<u>Denom.</u>	<u>Color</u>
389	1911	3¢	deep violet

Scott's unless otherwise specified.

USED

AND WE ARE OF THE OPINION THAT:

IT IS GENUINE WITH SMALL CREASES AT TOP RIGHT * *
* * * * *



Rosen
For The Expert Committee
Chairman

A 114938

Submitted by

LEWIS KAUFMAN

No. 22 450

Feb. 7th 19 66

THE PHILATELIC FOUNDATION
22 EAST 35TH STREET
NEW YORK 16, N. Y.

EXPERT COMMITTEE

We have examined the enclosed USA

1851 1c blue used -----

submitted by Gimbel's Stamp Dept. -----

of which a photograph is attached and are of the opinion

that it is not Scott #5 but that it is

Scott #6b type Ib pos. 6RIE defective ---



For The Expert Committee

For The Expert Committee
Chairman

*Catalog # Changed
now type Ib
is # 5A*

68



The Philatelic Foundation

70 West 40th Street • 15th Floor
New York, NY 10018

EXPERT COMMITTEE

No. 0395346
2/24/03

We have examined the enclosed item, of which a photograph is attached, and *described by the applicant* as follows:

Country: UNITED STATES OF AMERICA

<u>Cat. No.</u>	<u>Issue</u>	<u>Denom.</u>	<u>Color</u>
6	1857	1¢	blue

Scott's unless otherwise specified.

USED
POS. 92R4.

AND WE ARE OF THE OPINION THAT:

IT IS GENUINE WITH A PRESSED OUT VERTICAL CREASE
AND A FAINT DIAGONAL CREASE AT CENTER. * * * * *

* * * *




For The Expert Committee
Chairman

088524

Photocopies of this Certificate are not valid.

No. 78 324

Oct. 15, 1979

THE PHILATELIC FOUNDATION

270 MADISON AVENUE
NEW YORK, N.Y. 10016

EXPERT COMMITTEE

**We have examined the enclosed item submitted by the
applicant described as follows:**

Country USA Issue 1857 Denomination 1¢
Color blue Cat. No. 6

Brief description or additional
information

All Catalogue numbers are Scott's unless
otherwise specified.

Position 92 LIV, used.

of which a photograph is attached and are of the opinion

that it is a genuine position 92R4 with a

vertical crease. -----



Marion L. ...
**For The Expert Committee
Chairman**

submitted by Eldon A. Mohler.



No. 48866

01/14/2001

Professional Stamp Experts

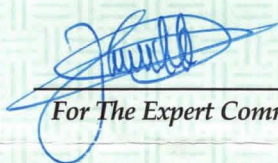
P.O. Box 6170, Newport Beach, CA 92658

Authentication Committee

We have examined the enclosed item submitted to PSE, of which the photo is attached with seal and are of the opinion that:

Cat.#	Issue	Denom.	Color
US#16	1855	10c	Green

"it is genuine used, Pos. 64L1 - Recut top and bottom and small corner crease at lower left."


For The Expert Committee

No. 38 558

JUN 5 - 1972

19

THE PHILATELIC FOUNDATION
99 PARK AVENUE
NEW YORK, N. Y. 10016

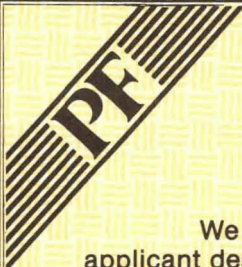
EXPERT COMMITTEE

We have examined the enclosed USA
1861, 3c, unused, o.g.

submitted by Stampazine
of which a photograph is attached and are of the opinion
that it is genuine Scott 64b, rose pink



John H. Hally
For The Expert Committee
Acting Chairman



THE PHILATELIC FOUNDATION

270 MADISON AVENUE
NEW YORK, N.Y. 10016
EXPERT COMMITTEE

No.
0128105
2/07/84

We have examined the enclosed item submitted by the
applicant described as follows:

Country: UNITED STATES OF AMERICA

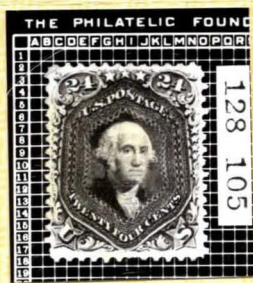
Cat. No.	Issue	Denom	Color
78	1863	24¢	Lilac

Scott's unless otherwise specified.

UNUSED, NO GUM

OF WHICH A PHOTOGRAPH IS ATTACHED AND
ARE OF THE OPINION THAT:

IT IS A GENUINE SCOTT 70a, BROWN LILAC SHADE WITH
A VERTICAL CREASE * * * * *



[Signature]
For The Expert Committee
CO- Chairman

submitted by J. & H. STOLOW, INC.

No. 44 667

May 6, 19 74

THE PHILATELIC FOUNDATION
99 PARK AVENUE
NEW YORK, N. Y. 10016

EXPERT COMMITTEE

We have examined the enclosed USA
1861, 24¢, blue cancel.-----

submitted by Richard Wolffers Inc.-----
of which a photograph is attached and are of the opinion
that it is genuine Scott 70d, grayish lilac.-----



[Signature]
For The Expert Committee
Chairman



The Philatelic Foundation

21 East 40th Street
New York, NY 10016

EXPERT COMMITTEE

No. 0288265
2/22/95

We have examined the following item, of which a photograph is attached, and *described by the applicant* as follows:

Country: UNITED STATES OF AMERICA

Cat. No.	Issue	Denom.	Color
99	1867	24¢	gray lilac

Scott's unless otherwise specified:

USED

AND WE ARE OF THE OPINION THAT:

IT IS GENUINE WITH A SMALL CORNER CREASE AT TOP
LEFT * * * * *



Robert P. Odell, Jr.
For The Expert Committee
Chairman

B 017676

Submitted by

VOGT STAMPS



THE PHILATELIC FOUNDATION
270 MADISON AVENUE
NEW YORK, N.Y. 10016
EXPERT COMMITTEE

No. 0191212
5/25/88

We have examined the enclosed item submitted by the
applicant described as follows:

Country: UNITED STATES OF AMERICA

Cat. No.	Issue	Denom	Color
139	1870	10¢	brown

Scott's unless otherwise specified.

USED

OF WHICH A PHOTOGRAPH IS ATTACHED AND
ARE OF THE OPINION THAT:

IT IS GENUINE WITH A TINY CORNER MARGIN CREASE AT
BOTTOM LEFT * * * * *



For The Expert Committee
VICE Chairman

submitted by RICHARD A. CHAMPAGNE LTD.

A 40515

THE PHILATELIC FOUNDATION

270 MADISON AVENUE
NEW YORK, N.Y. 10016
EXPERT COMMITTEE

No. 0188950
4/28/88

We have examined the enclosed item submitted by the applicant described as follows:

Country: UNITED STATES OF AMERICA

Cat. No.	Issue	Denom	Color
140	1870	12¢	dull violet

Scott's unless otherwise specified.

USED

OF WHICH A PHOTOGRAPH IS ATTACHED AND
ARE OF THE OPINION THAT:

IT IS GENUINE WITH A TINY THIN SPOT * * * * *



Rose

For The Expert Committee
VICE Chairman

A 38890



THE PHILATELIC FOUNDATION

21 EAST 40TH STREET
NEW YORK, N.Y. 10016
EXPERT COMMITTEE

No. 0267486
12/11/92

We have examined the enclosed item, of which a photograph is attached, and described by the applicant as follows:

Country: UNITED STATES OF AMERICA

Cat. No.	Issue	Denom.	Color
142	1870-71	24¢	purple

Scott's unless otherwise specified.

USED

AND WE ARE OF THE OPINION THAT:

IT IS GENUINE* * * * *



A 126838

Robert P. O'Connell
For The Expert Committee
ACTING Chairman

Submitted by

VALLEY STAMP CO.

No. 0008685010/8/02**Professional Stamp Experts**

P.O. Box 6170, Newport Beach, CA 92658

Authentication Committee

We have examined the enclosed item submitted to PSE, of which the photo is attached with seal and are of the opinion that:

Cat #	Issue	Denom.	Color
US#143	1870	30c	Black

"it is genuine used, with purple backstamp bleeding through slightly at upper right corner."



86850

For The Expert Committee



THE PHILATELIC FOUNDATION

21 EAST 40TH STREET
NEW YORK, N.Y. 10016
EXPERT COMMITTEE

No. 0232048

10/26/90

We have examined the enclosed item, of which a photograph is attached, and described by the applicant as follows:

Country: UNITED STATES OF AMERICA

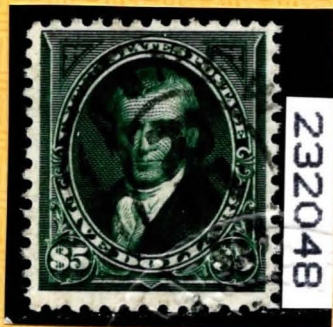
Cat. No.	Issue	Denom.	Color
263	1894	\$5.00	dark green

Scott's unless otherwise specified.

USED

AND WE ARE OF THE OPINION THAT:

IT IS GENUINE REPERFORATED AT RIGHT * * * * *



For The Expert Committee
ACTING Chairman

8957568
A

Submitted by

MICHAEL BROURMAN



The Philatelic Foundation

501 Fifth Avenue • Suite 1901
New York, NY 10017

EXPERT COMMITTEE

No. 0322538
1/21/98

We have examined the enclosed item, of which a photograph is attached, and *described by the applicant* as follows:

Country: UNITED STATES OF AMERICA

Cat. No.	Issue	Denom.	Color
449	1915	2¢	red

Scott's unless otherwise specified.

USED

AND WE ARE OF THE OPINION THAT:

IT IS GENUINE * * * * *



ARomin
For The Expert Committee
Chairman

D010154

Photocopies of this Certificate are not valid.

Submitted by

VOGT STAMPS



THE PHILATELIC FOUNDATION

21 EAST 40TH STREET
NEW YORK, N.Y. 10016
EXPERT COMMITTEE

No. 0250617
11/21/91

We have examined the enclosed item, of which a photograph is attached, and described by the applicant as follows:

Country: UNITED STATES OF AMERICA

Cat. No.	Issue	Denom.	Color
491	1916	2¢	carmine

Scott's unless otherwise specified.

UNUSED OG
JOINT LINE PAIR.

AND WE ARE OF THE OPINION THAT:

IT IS A GENUINE SCOTT 453, TYPE I PREVIOUSLY
HINGED * * * * *



Rosen
For The Expert Committee
Chairman

A 108009

Submitted by PHILLIP & PAM VOGT

No. 88 874

July 11, 1980

THE PHILATELIC FOUNDATION

270 MADISON AVENUE
NEW YORK, N.Y. 10016

EXPERT COMMITTEE

We have examined the enclosed item submitted by the
applicant described as follows:

Country USA Issue 1915 Denomination 2¢
pale

Color carmine red Cat. No. 461

Brief description or additional
information

All Catalogue numbers are Scott's unless
otherwise specified.

Unused, o.g.

of which a photograph is attached and are of the opinion
that it is genuine. -----



[Signature]
For The Expert Committee
Chairman

submitted by Stephen A. Moore

No. 73 930

April 20, 1979

THE PHILATELIC FOUNDATION

270 MADISON AVENUE
NEW YORK, N.Y. 10016

EXPERT COMMITTEE

We have examined the enclosed item submitted by the applicant described as follows:

Country USA Issue 1917-19 Denomination 2¢

Color deep rose Cat. No. 500

Brief description or additional
information

All Catalogue numbers are Scott's unless
otherwise specified.

Unused, o.g.

of which a photograph is attached and are of the opinion
that it is genuine. -----



Howard Decker

For The Expert Committee
Chairman

submitted by Stephen A. Moore.



The Philatelic Foundation

501 Fifth Avenue • Suite 1901
New York, NY 10017

EXPERT COMMITTEE

No. 0332027
11/25/98

We have examined the enclosed item, of which a photograph is attached, and *described by the applicant* as follows:

Country: UNITED STATES OF AMERICA

Cat. No.	Issue	Denom.	Color
518b	1917	\$1.00	deep brown

Scott's unless otherwise specified.

USED

AND WE ARE OF THE OPINION THAT:

IT IS GENUINE WITH A LIGHT DIAGONAL CREASE AT TOP, AND A SMALL HOLE AT BOTTOM. * * * * *



For The Expert Committee
Chairman

D020020

Photocopies of this Certificate are not valid.

Submitted by

MARK STUCKER

THE PHILATELIC FOUNDATION

270 MADISON AVENUE
NEW YORK, N.Y. 10016
EXPERT COMMITTEE

No. 0161822
8/11/86

We have examined the enclosed item submitted by the applicant described as follows:

Country: UNITED STATES OF AMERICA

Cat. No.	Issue	Denom	Color
533	1920	2¢	carmine

Scott's unless otherwise specified.

UNUSED OG
TOP MARGIN ARROW BLOCK OF FOUR.

OF WHICH A PHOTOGRAPH IS ATTACHED AND
ARE OF THE OPINION THAT:

IT IS GENUINE* * * * *



For The Expert Committee
Chairman

A 09287



THE PHILATELIC FOUNDATION

21 EAST 40TH STREET
NEW YORK, N.Y. 10016

EXPERT COMMITTEE

No. 0264384
9/30/92

We have examined the enclosed item, of which a photograph is attached, and described by the applicant as follows:

Country: UNITED STATES OF AMERICA

Cat. No.	Issue	Denom.	Color
539	1919	2¢	carmine rose

Scott's unless otherwise specified.

UNUSED OG

AND WE ARE OF THE OPINION THAT:

IT IS GENUINE * * * * *



Robert P. Odell

For The Expert Committee
ACTING Chairman

A 123699

Submitted by

WILLIAM A. LITTLE

No. 8281

Sept. 9th 1957

THE PHILATELIC FOUNDATION
22 EAST 35TH STREET
NEW YORK 16, N. Y.

EXPERT COMMITTEE

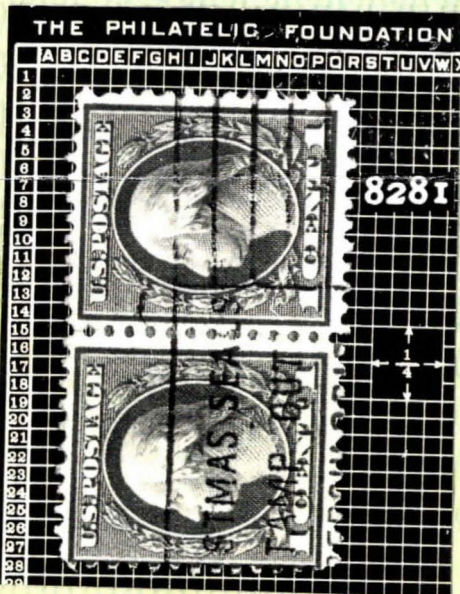
We have examined the enclosed U.S.A. 1921

1c. green, Scott #544, used pair

submitted by Vahan Mozian Inc.,

of which a photograph is attached and are of the opinion

that it is Scott #544 genuine used pair



Travis B. Dine

For The Expert Committee
Chairman





The Philatelic Foundation

501 Fifth Avenue • Suite 1901
New York, NY 10017

No. 0346572
12/22/99

EXPERT COMMITTEE

We have examined the enclosed item, of which a photograph is attached, and *described by the applicant* as follows:

Country: UNITED STATES OF AMERICA

Cat. No.	Issue	Denom.	Color
537a	1918	3c	deep red

Scott's unless otherwise specified.

UNUSED
HORIZONTAL PAIR

AND WE ARE OF THE OPINION THAT:

IT IS GENUINE, PREVIOUSLY HUNDED * * * * *



042295

Al Roman

For The Expert Committee
Chairman

Photocopies of this Certificate are not valid.

Submitted by

DAVID T. COBB

THE PHILATELIC FOUNDATION

270 MADISON AVENUE
NEW YORK, N.Y. 10016

EXPERT COMMITTEE

No. 0181204
12/09/87

We have examined the enclosed item submitted by the applicant described as follows:

Country: UNITED STATES OF AMERICA

<u>Cat. No.</u>	<u>Issue</u>	<u>Denom</u>	<u>Color</u>
J29	1894	1¢	vermillion

Scott's unless otherwise specified.

UNUSED OG
PART IMPRINT BLOCK OF FOUR.

OF WHICH A PHOTOGRAPH IS ATTACHED AND
ARE OF THE OPINION THAT:

IT IS GENUINE PREVIOUSLY HINGED WITH A TINY TEAR
AT TOP RIGHT * * * * *



L. L. Loefer

For The Expert Committee
VICE Chairman

A 31468

No. 105 006

January 29, 1982

THE PHILATELIC FOUNDATION

270 MADISON AVENUE
NEW YORK, N.Y. 10016

EXPERT COMMITTEE

We have examined the enclosed item submitted by the
applicant described as follows:

Country USA Issue 1912 Denomination 50¢

Color deep claret Cat. No. J50

Brief description or additional
information

All Catalogue numbers are Scott's unless
otherwise specified.

Unused, o.g.
of which a photograph is attached and are of the opinion

that it is genuine. -----



[Signature]
For The Expert Committee
Chairman

submitted by L. S. Murphy Jr.

No. 83 831

Feb. 25, 1980

THE PHILATELIC FOUNDATION

270 MADISON AVENUE
NEW YORK, N.Y. 10016

EXPERT COMMITTEE

We have examined the enclosed item submitted by the
applicant described as follows:

Country USA Issue 1919 Denomination \$2.00 on \$1.

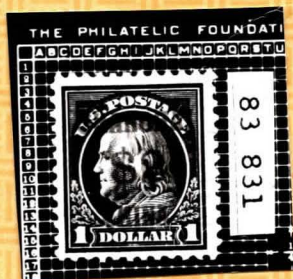
Color violet brown Cat. No. K16

Brief description or additional
information

All Catalogue numbers are Scott's unless
otherwise specified.

Unused, o.g.

of which a photograph is attached and are of the opinion
that it is genuine. -----



Wm. H. ...
For The Expert Committee
Chairman

submitted by Don Basist.



The Philatelic Foundation

70 West 40th Street • 15th Floor
New York, NY 10018
EXPERT COMMITTEE

No. 442352

08/02/2006

We have examined the enclosed item, of which a photograph is attached, and *described by the applicant* as follows:

Country: UNITED STATES OF AMERICA

<u>Cat. No.</u>	<u>Issue</u>	<u>Denom.</u>	<u>Color</u>
O69	1873	\$5.00	green & black

Scott's unless otherwise specified.

UNUSED, NO GUM,
AND WE ARE OF THE OPINION THAT:
IT IS GENUINE*****



442352



For The Expert Committee
Chairman

Photocopies of this Certificate are not valid.

Submitted by

CHERRYSTONE STAMP CENTRE

F 154028

THE BRITISH PHILATELIC ASSOCIATION, LTD.
EXPERT COMMITTEE.

34/35, SOUTHAMPTON STREET, STRAND,

LONDON, W.C.2. *Mar. 17th 1928*

We have examined the attached..... *United States*
 *1873, State, \$10 black & green,*
unused front 23.....

and are of the opinion that:—

it is a genuine unused copy

W. Hunkamer

Frank H. Oliver

R. E. F. E. E. E.



Hunkamer

This opinion is given subject to the conditions printed on the back hereof.



THE PHILATELIC FOUNDATION

21 EAST 40TH STREET
NEW YORK, N.Y. 10016
EXPERT COMMITTEE

No. 0246034
8/29/91

We have examined the enclosed item, of which a photograph is attached, and described by the applicant as follows:

Country: UNITED STATES OF AMERICA

Cat. No.	Issue	Denom.	Color
071	1873		\$20.00 green & black

Scott's unless otherwise specified.

UNUSED OG
HORIZONTAL PAIR.

AND WE ARE OF THE OPINION THAT:

IT IS GENUINE PREVIOUSLY HINGED* * * * *



Rosen

For The Expert Committee
ACTING Chairman

A 103254

Submitted by AJAX STAMP CO.

No. 4162908/03/2000**Professional Stamp Experts**


P.O. Box 6170, Newport Beach, CA 92658

Authentication Committee

We have examined the enclosed item submitted to PSE, of which the photo is attached with seal and are of the opinion that:

Cat.#	Issue	Denom.	Color
US#O103	1879	24c	Vermilion

"it is genuine unused, No Gum"



President, Professional Stamp Experts





No. 0130556
4/09/84

We have examined the enclosed item submitted by the applicant described as follows:

Country: UNITED STATES OF AMERICA

<u>Cat. No.</u>	<u>Issue</u>	<u>Denom</u>	<u>Color</u>
PR30	1875	\$36---	brown rose

Scott's unless otherwise specified.

UNUSED 06

OF WHICH A PHOTOGRAPH IS ATTACHED AND
ARE OF THE OPINION THAT:

IT IS GENUINE 其 其 其 其 其 其 其 其 其 其 其 其 其 其 其 其 其



For The Expert Committee
Chairman

submitted by JACK E. MOLESWORTH, INC.



The Philatelic Foundation

501 Fifth Avenue • Suite 1901
New York, NY 10017

EXPERT COMMITTEE

No. 0357346
8/03/00

We have examined the enclosed item, of which a photograph is attached, and *described by the applicant* as follows:

Country: UNITED STATES OF AMERICA

Cat. No.	Issue	Denom.	Color
PR38	1875	9¢	gray black

Scott's unless otherwise specified.

UNUSED, NO GUM

AND WE ARE OF THE OPINION THAT:

IT IS GENUINE* * * * *



Alan D 047590

For The Expert Committee
Chairman

Photocopies of this Certificate are not valid.

Submitted by

DANA OKEY

No. 46 658

NOV 4 1974

19

THE PHILATELIC FOUNDATION
99 PARK AVENUE
NEW YORK, N. Y. 10016

EXPERT COMMITTEE

We have examined the enclosed USA
1875, 24¢, pale rose, Scott PR41, unused. -

submitted by Frank Sankey -----
of which a photograph is attached and are of the opinion
that it is genuine. -----



John H. Hall
For The Expert Committee
Chairman



The Philatelic Foundation

501 Fifth Avenue • Suite 1901
New York, NY 10017

No. 0376456
10/09/01

EXPERT COMMITTEE

We have examined the enclosed item, of which a photograph is attached, and *described by the applicant* as follows:

Country: UNITED STATES OF AMERICA

Cat. No.	Issue	Denom.	Color
PR42	1875	36¢	pale rose

Scott's unless otherwise specified:

UNUSED

AND WE ARE OF THE OPINION THAT:

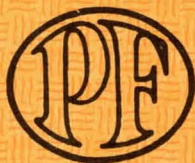
IT IS GENUINE WITH A SMALL VERTICAL CREASE IN THE TOP RIGHT MARGIN



For The Expert Committee
Chairman

Photocopies of this Certificate are not valid.

067625



THE PHILATELIC FOUNDATION

21 EAST 40TH STREET
NEW YORK, N.Y. 10016

EXPERT COMMITTEE

No. 0268610
1/29/93

We have examined the enclosed item, of which a photograph is attached, and described by the applicant as follows:

Country: UNITED STATES OF AMERICA

Cat. No.	Issue	Denom.	Color
PR30	1875	\$36.-	brown rose

Scott's unless otherwise specified.

UNUSED OG

AND WE ARE OF THE OPINION THAT:

IT IS A GENUINE SCOTT PR77var, PRIVATELY
PERFORATED AMERICAN BANKNOTE CO. SPECIAL
PRINTING. * * * * *



Robert P. O'Connell

For The Expert Committee
ACTING Chairman

A 128943

Submitted by

VOGT STAMPS

No. **00127740****12/7/2004*****Professional Stamp Experts***

P.O. Box 6170, Newport Beach, CA 92658

Authentication Committee

We have examined the enclosed item submitted to PSE, of which the photo is attached with seal and are of the opinion that:

Cat #	Issue	Denom.	Color
US#PR90	1894	1c	Intense black

"it is genuine unused, o.g., previously hinged."

**127740**
For The Expert Committee

No. 5522509/13/2001**Professional Stamp Experts**

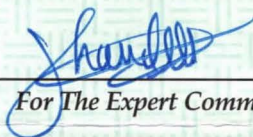
P.O. Box 6170, Newport Beach, CA 92658

Authentication Committee

We have examined the enclosed item submitted to PSE, of which the photo is attached with seal and are of the opinion that:

Cat.#	Issue	Denom.	Color
US#PR94	1894	10c	Intense black

"it is genuine unused, o.g., previously hinged."



For The Expert Committee

No. **00104301****9/18/03****Professional Stamp Experts**

P.O. Box 6170, Newport Beach, CA 92658


Authentication Committee

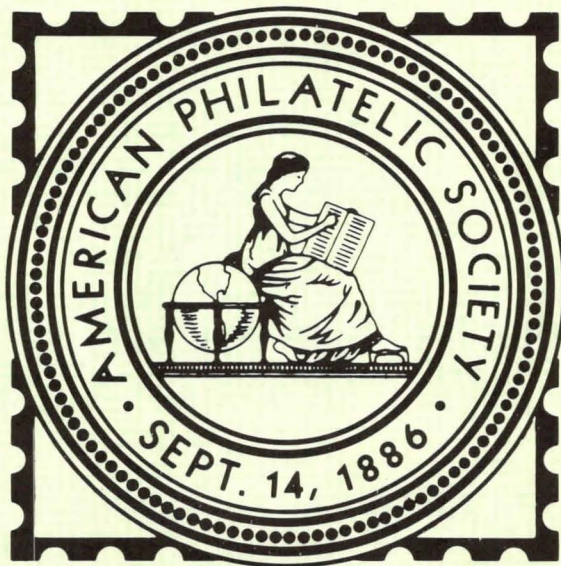
We have examined the enclosed item submitted to PSE, of which the photo is attached with seal and are of the opinion that:

Cat #	Issue	Denom.	Color
US#FR112	1895	\$50	Dull rose

GRADE: FR 20,Mint,DOG

"it is genuine unused, disturbed o.g., with small faults."

**104301**
For The Expert Committee



The
American Philatelic
Expertizing Service



P.O. BOX 8000
STATE COLLEGE, PA. 16803

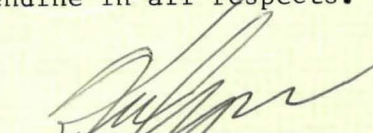
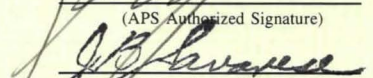
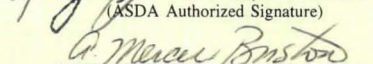
CERTIFICATE: 61086



Members of The American Philatelic Expertizing Service have examined the item submitted and it is their opinion that it is

United States, Scott No. PR89, unused,
original gum, genuine in all respects.

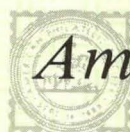
Date FEB 12 1967


(APS Authorized Signatory)

(ASDA Authorized Signatory)

(Administrator Signature)

news. PR 89 GOLD MEDAL

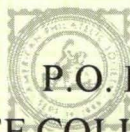


The



American Philatelic

Expertizing Service



P.O. Box 8000

STATE COLLEGE, PA. 16803



7-86CBF/3M



The American Philatelic Expertizing Service



Use the No. assigned here→
when referring to the opinion
rendered by the Committee.

37106

Enclosed herewith for examination is the following item believed to be:

Country U.S.A. Year Issued 1875

Denomination 96.4 Color Pale Rose

☐ Unused o.g. ☐ Unused part o.g. ☐ Used

☒ Unused no gum

Cat. No. PR 47 Cat. Value \$450.00
(Enter one number only)

Catalogue used 1979 Scott U.S. Spec.

Other information

The item submitted has been previously expertized ☐ yes, ☒ no.

If yes, give committee name

certificate number , date

The following information is desired:

IS IT GENUINE?

My remittance in the amount of \$8.00, \$11.00, \$15.00, \$20.00 (circle one) is enclosed as per the schedule set forth in Rule No. 3. I am also enclosing the stamped addressed envelope required by Rule No. 4.

I have read and fully understand the Rules and Requirements and I accept them without qualification. I further certify that the item submitted is the property of the undersigned and if coverage against loss or damage is desired I will provide my own insurance.

Parks M. King Jr.
(signature)

Owner's Item No. 1 Date submitted 5-7-79

Name PARKS M. KING JR.
(Print or Type)

Address 200 S. TRYON ST., SUITE 1100

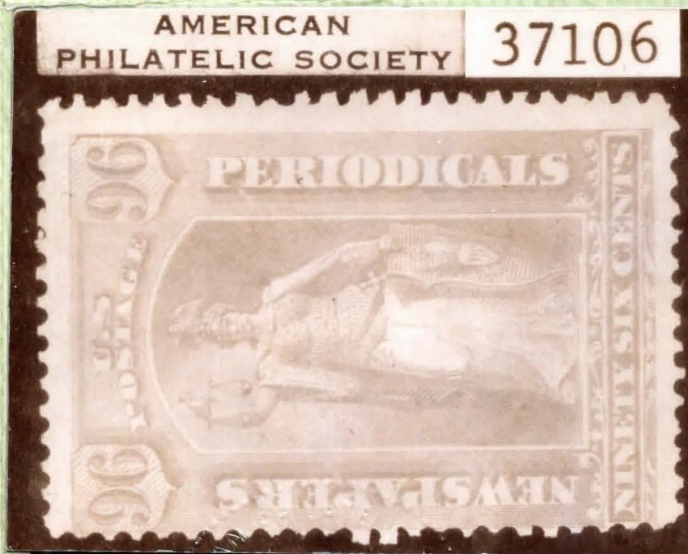
City CHARLOTTE State N.C. Zip No. 28202

APS No. 58598 , ASDA Member

MOUNT ONLY ONE STAMP, PAIR, BLOCK OR COVER IN THIS SPACE. MOUNT ITEM SO IT CAN BE EASILY REMOVED FOR EXAMINATION BUT BE SURE THE MOUNT IS CLOSED OR FOLDED SO THE ITEM WILL NOT ACCIDENTALLY SLIDE OUT. A SMALL ACETATE OR GLASSINE ENVELOPE IS RECOMMENDED.

DO NOT USE SCOTCH TAPE OR STAPLES.

CERTIFICATE IS INVALID IF LEFT-HAND PANEL IS SEPARATED FROM THIS PANEL.



Members of The American Philatelic Expertizing Service have examined the item submitted and it is their opinion that it is

Scott No. PR 47, unused, no gum,
genuine, UR corner crease.

James DeLoe
(APS Authorized Signature)
John Swanson
(ASDA Authorized Signature)

Date JUL 19 1979

rendered. No insurance against loss in the mails will be provided by the American Philatelic Expertizing Service. The owner must affix sufficient postage to the second envelope so the item can be returned by registered mail at full valuation. The requirement is optional only for those items valued at \$200 or less.

5. The American Philatelic Expertizing Service reserves the right at all times to decline to examine or give an opinion on any item. Single stamps will not be accepted for authentication as coil or imperforate varieties. Such items must be submitted in pairs or larger pieces. Requests for the plate position of a stamp or overprint will not be accepted. **Stamps without gum and used varieties must be thoroughly cleaned of all hinges.**

6. Requests for the market or net value of an item will not be accepted nor will an opinion as to the mint never hinged condition be given.

7. The decisions rendered by The American Philatelic Expertizing Service are not guaranteed and are only opinions. No refunds unless no opinion given.

8. Since the meaning of the terms, superb, very fine, etc., are debatable, no opinion as to general condition will be given. Defects and alterations not readily apparent will be noted.

9. All reasonable care will be taken of items submitted for examination, but all items are accepted with the full understanding on the part of the owner that neither the American Philatelic Society, the American Stamp Dealers' Association, nor members of their Expertizing Committees are liable for any loss or damage resulting from any cause whatever except for gross negligence. Since the American Philatelic Expertizing Service is unable to obtain insurance coverage of any kind, an owner desiring coverage must carry his own insurance.

10. The American Philatelic Society and the American Stamp Dealers' Association reserve the right to make such changes without notice to the rules and requirements as they deem necessary, but such changes will be announced as soon as possible.

11. The request for an examination constitutes an acceptance by the owner of all rules and requirements of The American Philatelic Expertizing Service.



The
American Philatelic
Expertizing Service



37106

P. O. Box 800
STATE COLLEGE, Pa. 16801

* * *

RULES AND REQUIREMENTS

1. Each stamp or cover submitted for examination must be mounted or affixed to a separate form. A coil pair or block shall be considered a single item. Sets of stamps will not be accepted unless individually mounted on separate forms.
2. Each item must be the bona fide property of the individual submitting it for examination. The owner may assign an identification number to each item submitted.
3. The fee for a certificate of opinion, in accordance with the following schedule, **must accompany** each item submitted.

<i>Current Scott Catalogue Value</i>	<i>APS/ASDA Members</i>	<i>Non- Members</i>
\$200 or less	\$ 8.00	\$11.00
Over \$200 to \$1000 and all unpriced items	\$11.00	\$15.00
Over \$1000	\$15.00	\$20.00

The fee for an uncatalogued item will be the same as for an unpriced item. Stamps will not be accepted. Foreign checks, including Canadian, will not be accepted unless drawn upon a United States bank and payable in U.S. dollars at par.

4. One stamped addressed No. 10 (large 9½") envelope must accompany each item submitted plus one small stamped addressed envelope for each item or group of items submitted at one time. The small envelope will be used to acknowledge receipt by returning Owner's Receipt of Expertizing Service form after a number has been assigned. The second envelope (No. 10) will be used to return the item submitted with the report of the opinion

←(Continued)

12-78H/10M



The
American Philatelic
Expertization Service



Enclosed herewith for examination is the following item believed to be:

Country U. S. Year Issued 1875

Denomination 6c Color gray black

☐ Mint never hinged ☐ Unused o.g. ☐ Used
PR 60 ☒ Unused part o.g. ☐ Unused no gum

Cat. No. PR 36 Cat. Value 12.50

Catalogue used Scott's 1974 U. S. Spec.

Other information _____

The item submitted has been previously expertized ☐ yes, ☒ no.
If yes, give committee name and date _____

The following information is desired:

Genuine as described above

My remittance in the amount of \$3.00, \$5.00, \$8.00, \$12.00 (circle one) is enclosed as per the schedule set forth in Rule No. 3. I am also enclosing the stamped addressed envelopes required by Rule No. 4.

I have read and fully understand the Rules and Requirements and I accept them without qualification. I further certify that the item submitted is the property of the undersigned and if coverage against loss or damage is desired I will provide my own insurance.

Owner's Item No. 3 (signature) Date submitted 3/11/74

Name W. G. Browne (Print or Type)

Address 1237 N. W. 11th St. P. O. Box 6837

City Burbank, State CA Zip No. 91510

APS No. 45446 ASDA Member _____

Use the No. assigned here →
when referring to the opinion
rendered by the Committee.

18465

MOUNT ONLY ONE STAMP, PAIR, BLOCK OR COVER IN THIS SPACE. MOUNT ITEM SO IT CAN BE EASILY REMOVED FOR EXAMINATION BUT BE SURE THE MOUNT IS CLOSED OR FOLDED SO THE ITEM WILL NOT ACCIDENTALLY SLIDE OUT. A SMALL ACETATE OR GLASSINE ENVELOPE IS RECOMMENDED.

AMERICAN
PHILATELIC SOCIETY 18465



Members of The American Philatelic Expertization Service have examined the item submitted and it is their opinion that it is

Scott No. PR 60, unused, genuine in all respects
o.g.

Date JUN 27 1974

James T. DeLong
(APS Authorized Signature)
James R. Seigle
(ASDA Authorized Signature)

second envelope so the item can be returned by registered mail at full valuation. This requirement is optional only for those items valued at \$200 or less.

5. The American Philatelic Expertization Service reserves the right at all times to decline to examine or give an opinion on any item. Single stamps will not be accepted for authentication as coil or imperforate varieties. Such items must be submitted in pairs or larger pieces. Requests for the plate position of a stamp or overprint will not be accepted. Stamps without gum and used varieties must be thoroughly cleaned of all hinges.

6. Requests for the market or net value of an item will not be accepted. Catalogue values may be furnished if published and desired.

7. The decisions rendered by The American Philatelic Expertization Service are not guaranteed and are only opinions. No refunds unless no opinion given.

8. Since the meanings of the terms, superb, very fine, etc., are debatable, no opinion as to general condition will be given. Defects and alterations not readily apparent will be noted.

9. All reasonable care will be taken of items submitted for examination, but all items are accepted with the full understanding on the part of the owner that neither the American Philatelic Society, the American Stamp Dealers' Association, nor members of their Expertization Committees are liable for any loss or damage resulting from any cause whatever except for gross negligence. Since the American Philatelic Expertization Service is unable to obtain insurance coverage of any kind, an owner desiring coverage must carry his own insurance.

10. Item will be returned as soon after examination as possible but since they are forwarded to committee members not more than once or twice a month, owners should allow between 60 and 90 days before expecting a reply. No item is accepted if the owner insists upon a deadline date for its return.

11. The American Philatelic Society and the American Stamp Dealers' Association reserve the right to make such changes without notice to the rules and requirements as they deem necessary, but such changes will be announced as soon as possible.

12. The request for an examination constitutes an acceptance by the owner of all rules and requirements of The American Philatelic Expertization Service.



PR 60

The
American Philatelic
Expertization Service

P. O. Box 800 **18465**

STATE COLLEGE, PA. 16801

* * *

RULES AND REQUIREMENTS

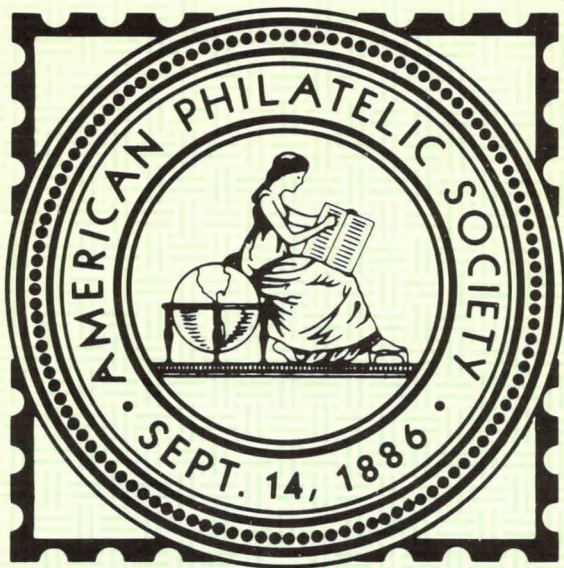
1. Each stamp or cover submitted for examination must be mounted or affixed to a separate form. A coil pair or block shall be considered a single item. Sets of stamps will not be accepted unless individually mounted on separate forms.
2. Each item must be the bona fide property of the individual submitting it for examination. The owner may assign an identification number to each item submitted.
3. The fee for a certificate of opinion, in accordance with the following schedule, must accompany each item submitted.

<i>Current Scott Catalogue Value</i>	<i>APS/ASDA Members</i>	<i>Non- Members</i>
\$200 or less	\$3.00 6.00	\$5.00
Over \$200 to \$1000 and all unpriced items	\$5.00 8.00	\$8.00
Over \$1000	\$8.00 11.00	\$12.00

Stamps will not be accepted. Foreign checks, including Canadian, will not be accepted unless drawn upon a United States bank and payable in U.S. dollars at par.

4. One stamped self-addressed No. 10 (large 9½") envelope must accompany each item submitted plus one small stamped self-addressed envelope for each item or group of items submitted at one time. The small envelope will be used to acknowledge receipt by returning Owner's Receipt of the Expertization Service form after a number has been assigned. The second envelope (No. 10) will be used to return the item submitted with the report of the opinion rendered. No insurance against loss in the mails will be provided by the American Philatelic Expertization Service. The owner must affix sufficient postage to the

← (Continued)



*The
American Philatelic
Expertizing Service*



P.O. BOX 8000
STATE COLLEGE, PA. 16803

CERTIFICATE: 61591



Members of The American Philatelic Expertizing Service have examined the item submitted and it is their opinion that it is

United States, Scott No. PR66, unused,
original gum, genuine, hinge thin. -

Date JUN 5 1987

(APS Authorized Signature)

(ASDA Authorized Signature)

(Administrator Signature)

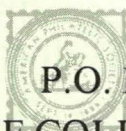
PR 66



The
American Philatelic



Expertizing Service



P.O. Box 8000
STATE COLLEGE, PA. 16803





The American Philatelic Expertization Service



Enclosed herewith for examination is the following item believed to be:

Country U. S. Year Issued 1875

Denomination 3¢ Color gray black

☐ Mint never hinged ☐ Unused o.g. ☐ Used
☐ Unused part o.g. ☒ Unused no gum

Cat. No. PR 34 Cat. Value 12.00

Catalogue used Scott U. S. Spec. 1974

Other information

The item submitted has been previously expertized ☐ yes, ☒ no.

If yes, give committee name and date

The following information is desired:

Genuine as described above.

My remittance in the amount of (\$3.00, \$5.00, \$8.00, \$12.00 (circle one) is enclosed as per the schedule set forth in Rule No. 3. I am also enclosing the stamped addressed envelopes required by Rule No. 4.

I have read and fully understand the Rules and Requirements and I accept them without qualification. I further certify that the item submitted is the property of the undersigned and if coverage against loss or damage is desired I will provide my own insurance.

Owner's Item No. 1 (signature) Date submitted 3/11/74

Name W. G. Browne (Print or Type)

Address P. O. Box 6837

City Burbank, State CA Zip No. 91510

APS No. 45446 ASDA Member

Use the No. assigned here → when referring to the opinion rendered by the Committee.

18463

MOUNT ONLY ONE STAMP, PAIR, BLOCK OR COVER IN THIS SPACE. MOUNT ITEM SO IT CAN BE EASILY REMOVED FOR EXAMINATION BUT BE SURE THE MOUNT IS CLOSED OR FOLDED SO THE ITEM WILL NOT ACCIDENTALLY SLIDE OUT. A SMALL ACETATE OR GLASSINE ENVELOPE IS RECOMMENDED.

AMERICAN PHILATELIC SOCIETY 18463



Members of The American Philatelic Expertization Service have examined the item submitted and it is their opinion that it is

Scott No. PR 34, unused, no gum
as issued, genuine in all respects.

James T. DeVos
(APS Authorized Signature)
Daniel R. Seyle
(ASDA Authorized Signature)

Date JUN 27 1974

second envelope so the item can be returned by registered mail at full valuation. This requirement is optional only for those items valued at \$200 or less.

5. The American Philatelic Expertization Service reserves the right at all times to decline to examine or give an opinion on any item. Single stamps will not be accepted for authentication as coil or imperforate varieties. Such items must be submitted in pairs or larger pieces. Requests for the plate position of a stamp or overprint will not be accepted. Stamps without gum and used varieties must be thoroughly cleaned of all hinges.

6. Requests for the market or net value of an item will not be accepted. Catalogue values may be furnished if published and desired.

7. The decisions rendered by The American Philatelic Expertization Service are not guaranteed and are only opinions. No refunds unless no opinion given.

8. Since the meanings of the terms, superb, very fine, etc., are debatable, no opinion as to general condition will be given. Defects and alterations not readily apparent will be noted.

9. All reasonable care will be taken of items submitted for examination, but all items are accepted with the full understanding on the part of the owner that neither the American Philatelic Society, the American Stamp Dealers' Association, nor members of their Expertization Committees are liable for any loss or damage resulting from any cause whatever except for gross negligence. Since the American Philatelic Expertization Service is unable to obtain insurance coverage of any kind, an owner desiring coverage must carry his own insurance.

10. Item will be returned as soon after examination as possible but since they are forwarded to committee members not more than once or twice a month, owners should allow between 60 and 90 days before expecting a reply. No item is accepted if the owner insists upon a deadline date for its return.

11. The American Philatelic Society and the American Stamp Dealers' Association reserve the right to make such changes without notice to the rules and requirements as they deem necessary, but such changes will be announced as soon as possible.

12. The request for an examination constitutes an acceptance by the owner of all rules and requirements of The American Philatelic Expertization Service.



PR 34 S

The
American Philatelic
Expertization Service



18463

P. O. Box 800

STATE COLLEGE, PA. 16801

♦ ♦ ♦

RULES AND REQUIREMENTS

1. Each stamp or cover submitted for examination must be mounted or affixed to a separate form. A coil pair or block shall be considered a single item. Sets of stamps will not be accepted unless individually mounted on separate forms.
2. Each item must be the bona fide property of the individual submitting it for examination. The owner may assign an identification number to each item submitted.
3. The fee for a certificate of opinion, in accordance with the following schedule, must accompany each item submitted.

<i>Current Scott Catalogue Value</i>	<i>APS/ASDA Members</i>	<i>Non- Members</i>
\$200 or less	\$3.00	\$5.00
Over \$200 to \$1000 and all unpriced items	\$5.00	\$8.00
Over \$1000	\$8.00	\$12.00

Stamps will not be accepted. Foreign checks, including Canadian, will not be accepted unless drawn upon a United States bank and payable in U.S. dollars at par.

4. One stamped self-addressed No. 10 (large 9½") envelope must accompany each item submitted plus one small stamped self-addressed envelope for each item or group of items submitted at one time. The small envelope will be used to acknowledge receipt by returning Owner's Receipt of the Expertization Service form after a number has been assigned. The second envelope (No. 10) will be used to return the item submitted with the report of the opinion rendered. No insurance against loss in the mails will be provided by the American Philatelic Expertization Service. The owner must affix sufficient postage to the

←(Continued)

1-74/10M



The
American Philatelic
Expertization Service



Enclosed herewith for examination is the following item believed to be:

Country U. S. Year Issued 1875

Denomination 4¢ Color gray black

☐ Mint never hinged ☐ Unused o.g.
☐ Unused part o.g. ☐ Used
☒ Unused no gum

Cat. No. PR 35 Cat. Value 12.00

Catalogue used Scott's 1974 U. S. Spec.

Other information _____

The item submitted has been previously expertized ☐ yes, ☒ no.
If yes, give committee name and date _____

The following information is desired:

Genuine as described above

My remittance in the amount of \$3.00, \$5.00, \$8.00, \$12.00 (circle one) is enclosed as per the schedule set forth in Rule No. 3. I am also enclosing the stamped addressed envelopes required by Rule No. 4.

I have read and fully understand the Rules and Requirements and I accept them without qualification. I further certify that the item submitted is the property of the undersigned and if coverage against loss or damage is desired I will provide my own insurance.

(signature)

Owner's Item No. 2 Date submitted 3/11/74

Name W. G. Browne
(Print or Type)

Address P. O. Box 6837

City Burbank, State CA Zip No. 91510

APS No. 45446 ASDA Member _____

Use the No. assigned here→
when referring to the opinion
rendered by the Committee.

18464

MOUNT ONLY ONE STAMP, PAIR, BLOCK OR COVER IN THIS SPACE. MOUNT ITEM SO IT CAN BE EASILY REMOVED FOR EXAMINATION BUT BE SURE THE MOUNT IS CLOSED OR FOLDED SO THE ITEM WILL NOT ACCIDENTALLY SLIDE OUT. A SMALL ACETATE OR GLASSINE ENVELOPE IS RECOMMENDED.



Members of The American Philatelic Expertization Service have examined the item submitted and it is their opinion that it is

Scott No. PR 35, unused, no gum
as issued, genuine in all respects.

JUN 27 1974

Date _____

James D. DeLoz
(APS Authorized Signature)
Daniel R. Seale
(ASDA Authorized Signature)

second envelope so the item can be returned by registered mail at full valuation. This requirement is optional only for those items valued at \$200 or less.

5. The American Philatelic Expertization Service reserves the right at all times to decline to examine or give an opinion on any item. Single stamps will not be accepted for authentication as coil or imperforate varieties. Such items must be submitted in pairs or larger pieces. Requests for the plate position of a stamp or overprint will not be accepted. Stamps without gum and used varieties must be thoroughly cleaned of all hinges.

6. Requests for the market or net value of an item will not be accepted. Catalogue values may be furnished if published and desired.

7. The decisions rendered by The American Philatelic Expertization Service are not guaranteed and are only opinions. No refunds unless no opinion given.

8. Since the meanings of the terms, superb, very fine, etc., are debatable, no opinion as to general condition will be given. Defects and alterations not readily apparent will be noted.

9. All reasonable care will be taken of items submitted for examination, but all items are accepted with the full understanding on the part of the owner that neither the American Philatelic Society, the American Stamp Dealers' Association, nor members of their Expertization Committees are liable for any loss or damage resulting from any cause whatever except for gross negligence. Since the American Philatelic Expertization Service is unable to obtain insurance coverage of any kind, an owner desiring coverage must carry his own insurance.

10. Item will be returned as soon after examination as possible but since they are forwarded to committee members not more than once or twice a month, owners should allow between 60 and 90 days before expecting a reply. No item is accepted if the owner insists upon a deadline date for its return.

11. The American Philatelic Society and the American Stamp Dealers' Association reserve the right to make such changes without notice to the rules and requirements as they deem necessary, but such changes will be announced as soon as possible.

12. The request for an examination constitutes an acceptance by the owner of all rules and requirements of The American Philatelic Expertization Service.



PR 35 2

*The
American Philatelic
Expertization Service*

P. O. Box 800

STATE COLLEGE, PA. 16801

18464

♦ ♦ ♦

RULES AND REQUIREMENTS

1. Each stamp or cover submitted for examination must be mounted or affixed to a separate form. A coil pair or block shall be considered a single item. Sets of stamps will not be accepted unless individually mounted on separate forms.

2. Each item must be the bona fide property of the individual submitting it for examination. The owner may assign an identification number to each item submitted.

3. The fee for a certificate of opinion, in accordance with the following schedule, must accompany each item submitted.

<i>Current Scott Catalogue Value</i>	<i>APS/ASDA Members</i>	<i>Non- Members</i>
\$200 or less	\$3.00	\$5.00
Over \$200 to \$1000 and all unpriced items	\$5.00	\$8.00
Over \$1000	\$8.00	\$12.00

Stamps will not be accepted. Foreign checks, including Canadian, will not be accepted unless drawn upon a United States bank and payable in U.S. dollars at par.

4. One stamped self-addressed No. 10 (large 9½") envelope must accompany each item submitted plus one small stamped self-addressed envelope for each item or group of items submitted at one time. The small envelope will be used to acknowledge receipt by returning Owner's Receipt of the Expertization Service form after a number has been assigned. The second envelope (No. 10) will be used to return the item submitted with the report of the opinion rendered. No insurance against loss in the mails will be provided by the American Philatelic Expertization Service. The owner must affix sufficient postage to the

← (Continued)

1-74/10M



The
American Philatelic
Expertization Service



Enclosed herewith for examination is the following item believed to be:

Country U. S. Year Issued 1879

Denomination 6c Color black

☐ Mint never hinged ☐ Unused o.g. ☐ Used
PR36 ☐ Unused part o.g. ☒ Unused no gum

Cat. No. PR 60 Cat. Value 3.50

Catalogue used Scott's 1974 U. S. Spec.

Other information _____

The item submitted has been previously expertized ☐ yes, ☒ no.
If yes, give committee name and date _____

The following information is desired:

Genuine as described above.

My remittance in the amount of (\$3.00, \$5.00, \$8.00, \$12.00 (circle one) is enclosed as per the schedule set forth in Rule No. 3. I am also enclosing the stamped addressed envelopes required by Rule No. 4.

I have read and fully understand the Rules and Requirements and I accept them without qualification. I further certify that the item submitted is the property of the undersigned and if coverage against loss or damage is desired I will provide my own insurance.

(signature)

Owner's Item No. 45 Date submitted 3/11/74

Name W. G. Browne
(Print or Type)

Address P. O. Box 6837

City Burbank, State CA Zip No. 91510

APS No. 45446 ASDA Member _____

Use the No. assigned here →
when referring to the opinion
rendered by the Committee.

18467

MOUNT ONLY ONE STAMP, PAIR, BLOCK OR COVER IN THIS SPACE. MOUNT ITEM SO IT CAN BE EASILY REMOVED FOR EXAMINATION BUT BE SURE THE MOUNT IS CLOSED OR FOLDED SO THE ITEM WILL NOT ACCIDENTALLY SLIDE OUT. A SMALL ACETATE OR GLASSINE ENVELOPE IS RECOMMENDED.

AMERICAN
PHILATELIC SOCIETY

18467



Members of The American Philatelic Expertization Service have examined the item submitted and it is their opinion that it is

Scott No. PR36, unused, no gum as issued, genuine in all respects.

James DeVos
(APS Authorized Signature)

Daniel R. Seigle
(ASDA Authorized Signature)

Date JUN 27 1974

second envelope so the item can be returned by registered mail at full valuation. This requirement is optional only for those items valued at \$200 or less.

5. The American Philatelic Expertization Service reserves the right at all times to decline to examine or give an opinion on any item. Single stamps will not be accepted for authentication as coil or imperforate varieties. Such items must be submitted in pairs or larger pieces. Requests for the plate position of a stamp or overprint will not be accepted. Stamps without gum and used varieties must be thoroughly cleaned of all hinges.

6. Requests for the market or net value of an item will not be accepted. Catalogue values may be furnished if published and desired.

7. The decisions rendered by The American Philatelic Expertization Service are not guaranteed and are only opinions. No refunds unless no opinion given.

8. Since the meanings of the terms, superb, very fine, etc., are debatable, no opinion as to general condition will be given. Defects and alterations not readily apparent will be noted.

9. All reasonable care will be taken of items submitted for examination, but all items are accepted with the full understanding on the part of the owner that neither the American Philatelic Society, the American Stamp Dealers' Association, nor members of their Expertization Committees are liable for any loss or damage resulting from any cause whatever except for gross negligence. Since the American Philatelic Expertization Service is unable to obtain insurance coverage of any kind, an owner desiring coverage must carry his own insurance.

10. Item will be returned as soon after examination as possible but since they are forwarded to committee members not more than once or twice a month, owners should allow between 60 and 90 days before expecting a reply. No item is accepted if the owner insists upon a deadline date for its return.

11. The American Philatelic Society and the American Stamp Dealers' Association reserve the right to make such changes without notice to the rules and requirements as they deem necessary, but such changes will be announced as soon as possible.

12. The request for an examination constitutes an acceptance by the owner of all rules and requirements of The American Philatelic Expertization Service.



PR 36 S

The
American Philatelic
Expertization Service

P. O. Box 800

18467

STATE COLLEGE, PA. 16801

♦ ♦ ♦

RULES AND REQUIREMENTS

1. Each stamp or cover submitted for examination must be mounted or affixed to a separate form. A coil pair or block shall be considered a single item. Sets of stamps will not be accepted unless individually mounted on separate forms.

2. Each item must be the bona fide property of the individual submitting it for examination. The owner may assign an identification number to each item submitted.

3. The fee for a certificate of opinion, in accordance with the following schedule, must accompany each item submitted.

<i>Current Scott Catalogue Value</i>	<i>APS/ASDA Members</i>	<i>Non- Members</i>
\$200 or less	\$3.00	\$5.00
Over \$200 to \$1000 and all unpriced items	\$5.00	\$8.00
Over \$1000	\$8.00	\$12.00

Stamps will not be accepted. Foreign checks, including Canadian, will not be accepted unless drawn upon a United States bank and payable in U.S. dollars at par.

4. One stamped self-addressed No. 10 (large 9½") envelope must accompany each item submitted plus one small stamped self-addressed envelope for each item or group of items submitted at one time. The small envelope will be used to acknowledge receipt by returning Owner's Receipt of the Expertization Service form after a number has been assigned. The second envelope (No. 10) will be used to return the item submitted with the report of the opinion rendered. No insurance against loss in the mails will be provided by the American Philatelic Expertization Service. The owner must affix sufficient postage to the

←(Continued)

1-74/10M



The
American Philatelic
Expertizing Service



P.O. BOX 800

52980

STATE COLLEGE, PA. 16801

* * *

Enclosed herewith for examination is the following item believed to be:

Country U. S. Year Issued 1875

Denomination 8¢ Color gray black

☐ Unused o.g. ☐ Unused part o.g. ☐ Used
☒ Unused no gum

Cat. No. PR 37 Cat. Value \$130.00
(Enter one number only)

Catalogue used Scott's Year 1984
(Must be current issue)

Other information _____

The item submitted has been previously expertized ☐ yes, ☐ no.

If yes, give committee name _____

certificate number _____, date _____

The following information is desired:

Genuine?

Correctly described?

MOUNT ONLY ONE STAMP, PAIR, BLOCK OR COVER IN THIS SPACE. MOUNT ITEM SO IT CAN BE EASILY REMOVED FOR EXAMINATION BUT BE SURE THE MOUNT IS CLOSED OR FOLDED SO THE ITEM WILL NOT ACCIDENTALLY SLIDE OUT. A SMALL ACETATE OR GLASSINE ENVELOPE IS RECOMMENDED.

DO NOT USE SCOTCH TAPE OR STAPLES.

CERTIFICATE IS INVALID IF LEFT-HAND PANEL IS SEPARATED FROM THIS PANEL.

AMERICAN
PHILATELIC SOCIETY 52980



Members of The American Philatelic Expertizing Service have examined the item submitted and it is their opinion that it is

US Scott No. PR37, unused, genuine, in all respects.

Date DEC 29 1983

(APS Authorized Signature)

(ASDA Authorized Signature)

RULES AND REQUIREMENTS

1. Each stamp or cover submitted for examination must be mounted or affixed to a separate form and addressed directly to the American Philatelic Expertizing Service at P.O. Box 800, State College, Pa. 16801. A coil pair or block shall be considered a single item. Sets of stamps will not be accepted unless each stamp is individually mounted on a separate form.

2. Each item must be the bona fide property of the individual submitting it for examination. The owner may assign an identification number to each item submitted.

3. The fee for a certificate of opinion, in accordance with the following schedule, **must accompany** each item submitted.

<i>Current Scott Catalogue Value</i>	<i>APS/ASDA Members</i>	<i>Non- Members*</i>
\$200 or less	\$10.00	\$15.00
Over \$200 to \$1000 and all unpriced items	\$13.00	\$20.00
Over \$1000	\$17.00	\$25.00

The fee for an uncatalogued item will be the same as for an unpriced item. Stamps will not be accepted. Foreign checks, including Canadian, will not be accepted unless drawn upon a United States bank and payable in U.S. dollars at par.

4. One stamped addressed No. 10 (large 9½") envelope must accompany each item submitted plus one small stamped addressed envelope for each item or group of items submitted at one time. The small envelope will be used to acknowledge receipt by returning Owner's Receipt of Expertizing Service form after a number has been assigned. The second envelope (No. 10) will be used to return the item submitted with the report of the opinion rendered. Unless necessary, do not use an oversized envelope as they are easily folded and frequently damage the enclosure. No insurance against loss in the mails will be provided by the American Philatelic Expertizing Service. The owner must affix sufficient postage (metered postage not accepted) to

* If application for APS or ASDA membership accompanies first submission, indicate that your application for membership is "pending" and take advantage of the "Members" schedule of fees.

the second envelope so the item can be returned by registered mail. The requirement is optional only for those items valued at \$200 or less.

5. The American Philatelic Expertizing Service reserves the right at all times to decline to examine or give an opinion on any item. Single coil stamps will not be accepted for authentication. Imperforate varieties of stamps regularly issued perforated will not be accepted for authentication except as a joined pair or larger piece. Requests for the plate position of a stamp or overprint will not be accepted. Used stamps and stamps without gum must be thoroughly cleaned of all hinges.

6. Requests for the market or net value of an item will not be accepted nor will an opinion as to the mint never hinged condition be given.

7. The decisions rendered by The American Philatelic Expertizing Service are not guaranteed and are only opinions. No refunds unless no opinion given.

8. Since the meaning of the terms, superb, very fine, etc., are debatable, no opinion as to general condition will be given. Defects and alterations not readily apparent will be noted.

9. All reasonable care will be taken of items submitted for examination, but all items are accepted with the full understanding on the part of the owner that neither the American Philatelic Society, the American Stamp Dealers' Association, nor members of their Expertizing Committees are liable for any loss or damage resulting from any cause whatever except for gross negligence. Since the American Philatelic Expertizing Service is unable to obtain insurance coverage of any kind, an owner desiring coverage must carry his own insurance.

10. The American Philatelic Society and the American Stamp Dealers' Association reserve the right to make such changes without notice to the rules and requirements as they deem necessary, but such changes will be announced as soon as possible.

11. The request for an examination constitutes an acceptance by the owner of all rules and requirements of The American Philatelic Expertizing Service.

12. No item will be accepted if the owner insists upon a deadline date for its return. Owners should allow at least 90 days before expecting a reply. Since items are submitted to expert committee members for their opinion by registered mail, unavoidable delays are often experienced.



The
American Philatelic
Expertizing Service



52982

P.O. BOX 800

STATE COLLEGE, PA. 16801

* * *

Enclosed herewith for examination is the following item believed to be:

Country U. S. Year Issued 1875

Denomination 10¢ Color gray black

☐ Unused o.g. ☐ Unused part o.g. ☐ Used
☒ Unused no gum

Cat. No. PR 15 PR 39 Cat. Value \$185.00
(Enter one number only)

Catalogue used Scott's Year 1984
(Must be current issue)

Other information _____

The item submitted has been previously expertized ☐ yes, ☐ no.

If yes, give committee name _____

certificate number _____, date _____

The following information is desired:

Genuine?

Correctly described?

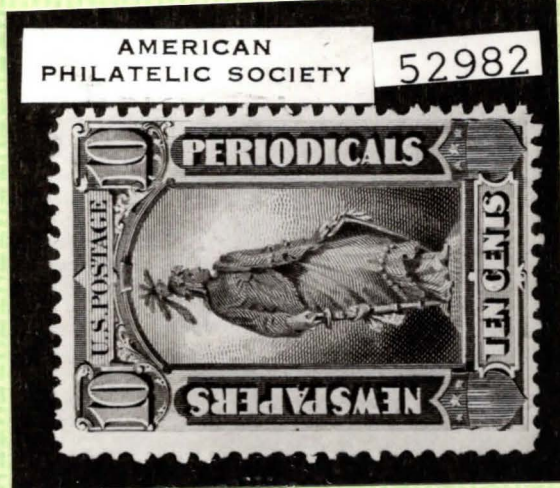
MOUNT ONLY ONE STAMP, PAIR, BLOCK OR COVER IN THIS SPACE. MOUNT ITEM SO IT CAN BE EASILY REMOVED FOR EXAMINATION BUT BE SURE THE MOUNT IS CLOSED OR FOLDED SO THE ITEM WILL NOT ACCIDENTALLY SLIDE OUT. A SMALL ACETATE OR GLASSINE ENVELOPE IS RECOMMENDED.

DO NOT USE SCOTCH TAPE OR STAPLES.

CERTIFICATE IS INVALID IF LEFT-HAND PANEL IS SEPARATED FROM THIS PANEL.

AMERICAN
PHILATELIC SOCIETY

52982



Members of The American Philatelic Expertizing Service have examined the item submitted and it is their opinion that it is

US Scott No. PR15, unused, genuine in all respects

Date

DEC 29 1983

(APS Authorized Signature)

(ASDA Authorized Signature)

RULES AND REQUIREMENTS

1. Each stamp or cover submitted for examination must be mounted or affixed to a separate form and addressed directly to the American Philatelic Expertizing Service at P.O. Box 800, State College, Pa. 16801. A coil pair or block shall be considered a single item. Sets of stamps will not be accepted unless each stamp is individually mounted on a separate form.

2. Each item must be the bona fide property of the individual submitting it for examination. The owner may assign an identification number to each item submitted.

3. The fee for a certificate of opinion, in accordance with the following schedule, **must accompany** each item submitted.

<i>Current Scott Catalogue Value</i>	<i>APS/ASDA Members</i>	<i>Non- Members*</i>
\$200 or less	\$10.00	\$15.00
Over \$200 to \$1000 and all unpriced items	\$13.00	\$20.00
Over \$1000	\$17.00	\$25.00

The fee for an uncatalogued item will be the same as for an unpriced item. Stamps will not be accepted. Foreign checks, including Canadian, will not be accepted unless drawn upon a United States bank and payable in U.S. dollars at par.

4. One stamped addressed No. 10 (large 9½") envelope must accompany each item submitted plus one small stamped addressed envelope for each item or group of items submitted at one time. The small envelope will be used to acknowledge receipt by returning Owner's Receipt of Expertizing Service form after a number has been assigned. The second envelope (No. 10) will be used to return the item submitted with the report of the opinion rendered. Unless necessary, do not use an oversized envelope as they are easily folded and frequently damage the enclosure. No insurance against loss in the mails will be provided by the American Philatelic Expertizing Service. The owner must affix sufficient postage (metered postage not accepted) to

* If application for APS or ASDA membership accompanies first submission, indicate that your application for membership is "pending" and take advantage of the "Members" schedule of fees.

PRIS S

the second envelope so the item can be returned by registered mail. The requirement is optional only for those items valued at \$200 or less.

5. The American Philatelic Expertizing Service reserves the right at all times to decline to examine or give an opinion on any item. Single coil stamps will not be accepted for authentication. Imperforate varieties of stamps regularly issued perforated will not be accepted for authentication except as a joined pair or larger piece. Requests for the plate position of a stamp or overprint will not be accepted. Used stamps and stamps without gum must be thoroughly cleaned of all hinges.

6. Requests for the market or net value of an item will not be accepted nor will an opinion as to the mint never hinged condition be given.

7. The decisions rendered by The American Philatelic Expertizing Service are not guaranteed and are only opinions. No refunds unless no opinion given.

8. Since the meaning of the terms, superb, very fine, etc., are debatable, no opinion as to general condition will be given. Defects and alterations not readily apparent will be noted.

9. All reasonable care will be taken of items submitted for examination, but all items are accepted with the full understanding on the part of the owner that neither the American Philatelic Society, the American Stamp Dealers' Association, nor members of their Expertizing Committees are liable for any loss or damage resulting from any cause whatever except for gross negligence. Since the American Philatelic Expertizing Service is unable to obtain insurance coverage of any kind, an owner desiring coverage must carry his own insurance.

10. The American Philatelic Society and the American Stamp Dealers' Association reserve the right to make such changes without notice to the rules and requirements as they deem necessary, but such changes will be announced as soon as possible.

11. The request for an examination constitutes an acceptance by the owner of all rules and requirements of The American Philatelic Expertizing Service.

12. No item will be accepted if the owner insists upon a deadline date for its return. Owners should allow at least 90 days before expecting a reply. Since items are submitted to expert committee members for their opinion by registered mail, unavoidable delays are often experienced.



The
American Philatelic
Expertizing Service



P.O. BOX 800
STATE COLLEGE, PA. 16801

52979

* * *

Enclosed herewith for examination is the following item believed to be:

Country U. S. Year Issued 1875

Denomination 6c Color gray black

☐ Unused o.g. ☐ Unused part o.g. ☐ Used

☒ Unused no gum

Cat. No. PR-12
PR 36 Cat. Value 110.00
(Enter one number only)

Catalogue used Scott's Year 1984
(Must be current issue)

Other information _____

The item submitted has been previously expertized ☐ yes, ☒ no.

If yes, give committee name _____

certificate number _____, date _____

The following information is desired:

Genuine?

Correctly identified?

MOUNT ONLY ONE STAMP, PAIR, BLOCK OR COVER IN THIS SPACE. MOUNT ITEM SO IT CAN BE EASILY REMOVED FOR EXAMINATION BUT BE SURE THE MOUNT IS CLOSED OR FOLDED SO THE ITEM WILL NOT ACCIDENTALLY SLIDE OUT. A SMALL ACETATE OR GLASSINE ENVELOPE IS RECOMMENDED.

DO NOT USE SCOTCH TAPE OR STAPLES.

CERTIFICATE IS INVALID IF LEFT-HAND PANEL IS SEPARATED FROM THIS PANEL.

AMERICAN
PHILATELIC SOCIETY 52979



Members of The American Philatelic Expertizing Service have examined the item submitted and it is their opinion that it is

US Scott No. PR12 . unused, genuine in all
respects.

Date DEC 29 1983

(APS Authorized Signature)

(ASDA Authorized Signature)

RULES AND REQUIREMENTS

1. Each stamp or cover submitted for examination must be mounted or affixed to a separate form and addressed directly to the American Philatelic Expertizing Service at P.O. Box 800, State College, Pa. 16801. A coil pair or block shall be considered a single item. Sets of stamps will not be accepted unless each stamp is individually mounted on a separate form.

2. Each item must be the bona fide property of the individual submitting it for examination. The owner may assign an identification number to each item submitted.

3. The fee for a certificate of opinion, in accordance with the following schedule, **must accompany** each item submitted.

<i>Current Scott Catalogue Value</i>	<i>APS/ASDA Members</i>	<i>Non- Members*</i>
\$200 or less	\$10.00	\$15.00
Over \$200 to \$1000 and all unpriced items	\$13.00	\$20.00
Over \$1000	\$17.00	\$25.00

The fee for an uncatalogued item will be the same as for an unpriced item. Stamps will not be accepted. Foreign checks, including Canadian, will not be accepted unless drawn upon a United States bank and payable in U.S. dollars at par.

4. One stamped addressed No. 10 (large 9½") envelope must accompany each item submitted plus one small stamped addressed envelope for each item or group of items submitted at one time. The small envelope will be used to acknowledge receipt by returning Owner's Receipt of Expertizing Service form after a number has been assigned. The second envelope (No. 10) will be used to return the item submitted with the report of the opinion rendered. Unless necessary, do not use an oversized envelope as they are easily folded and frequently damage the enclosure. No insurance against loss in the mails will be provided by the American Philatelic Expertizing Service. The owner must affix sufficient postage (metered postage not accepted) to

the second envelope so the item can be returned by registered mail. The requirement is optional only for those items valued at \$200 or less.

5. The American Philatelic Expertizing Service reserves the right at all times to decline to examine or give an opinion on any item. Single coil stamps will not be accepted for authentication. Imperforate varieties of stamps regularly issued perforated will not be accepted for authentication except as a joined pair or larger piece. Requests for the plate position of a stamp or overprint will not be accepted. Used stamps and stamps without gum must be thoroughly cleaned of all hinges.

6. Requests for the market or net value of an item will not be accepted nor will an opinion as to the mint never hinged condition be given.

7. The decisions rendered by The American Philatelic Expertizing Service are not guaranteed and are only opinions. No refunds unless no opinion given.

8. Since the meaning of the terms, superb, very fine, etc., are debatable, no opinion as to general condition will be given. Defects and alterations not readily apparent will be noted.

9. All reasonable care will be taken of items submitted for examination, but all items are accepted with the full understanding on the part of the owner that neither the American Philatelic Society, the American Stamp Dealers' Association, nor members of their Expertizing Committees are liable for any loss or damage resulting from any cause whatever except for gross negligence. Since the American Philatelic Expertizing Service is unable to obtain insurance coverage of any kind, an owner desiring coverage must carry his own insurance.

10. The American Philatelic Society and the American Stamp Dealers' Association reserve the right to make such changes without notice to the rules and requirements as they deem necessary, but such changes will be announced as soon as possible.

11. The request for an examination constitutes an acceptance by the owner of all rules and requirements of The American Philatelic Expertizing Service.

12. No item will be accepted if the owner insists upon a deadline date for its return. Owners should allow at least 90 days before expecting a reply. Since items are submitted to expert committee members for their opinion by registered mail, unavoidable delays are often experienced.

* If application for APS or ASDA membership accompanies first submission, indicate that your application for membership is "pending" and take advantage of the "Members" schedule of fees.

#10



The
American Philatelic
Expertizing Service



Enclosed herewith for examination is the following item believed to be:

Country United States Year Issued 1918
Denomination \$2 Color Orange Red + Black

☒ Unused o.g. ☐ Unused part o.g. ☐ Used
☐ Unused no gum

Cat. No. 523 Cat. Value \$1450
(Enter one number only)

Catalogue used Brooklyn, Mid 1980

Other information _____

The item submitted has been previously expertized ☐ yes, ☒ no.

If yes, give committee name _____

certificate number _____, date _____

The following information is desired:

Is it genuine? Has it been
requerished or reperfed? Are
there any defects?

My remittance in the amount of \$8.00, \$11.00, \$15.00, \$20.00 (circle one) is enclosed as per the schedule set forth in Rule No. 3. I am also enclosing the stamped addressed envelope required by Rule No. 4.

I have read and fully understand the Rules and Requirements and I accept them without qualification. I further certify that the item submitted is the property of the undersigned and if coverage against loss or damage is desired I will provide my own insurance.

George O. Redington, Jr.
(signature)

Owner's Item No. 10 Date submitted mailed 6-2-80

Name George O. Redington, Jr.
(Print or Type)

Address 19831 Robin Way

City Saratoga State Ca. Zip No. 95070

APS No. 107501, ASDA Member _____

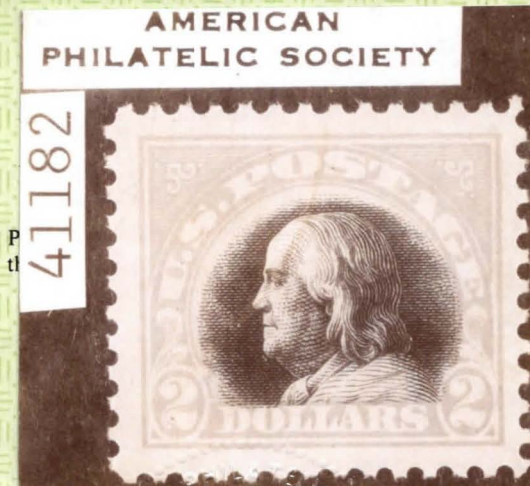
Use the No. assigned here→
when referring to the opinion
rendered by the Committee.

41182

MOUNT ONLY ONE STAMP, PAIR, BLOCK OR COVER
IN THIS SPACE. MOUNT ITEM SO IT CAN BE EASILY
REMOVED FOR EXAMINATION BUT BE SURE THE
MOUNT IS CLOSED OR FOLDED SO THE ITEM WILL
NOT ACCIDENTALLY SLIDE OUT. A SMALL ACETATE
OR GLASSINE ENVELOPE IS RECOMMENDED.

DO NOT USE SCOTCH TAPE OR STAPLES.

CERTIFICATE IS INVALID IF LEFT-HAND PANEL IS
SEPARATED FROM THIS PANEL.



Members of The American Philatelic Expertizing Service have examined
the item submitted and it is their opinion that it is

Scott No. 523, unused, o. g. genuine in all respects.

Date OCT 22 1980

James T. Nelson
(APS Authorized Signature)
J. B. Lawrence
(ASDA Authorized Signature)

rendered. No insurance against loss in the mails will be provided by the American Philatelic Expertizing Service. The owner must affix sufficient postage to the second envelope so the item can be returned by registered mail at full valuation. The requirement is optional only for those items valued at \$200 or less.

5. The American Philatelic Expertizing Service reserves the right at all times to decline to examine or give an opinion on any item. Single stamps will not be accepted for authentication as coil or imperforate varieties. Such items must be submitted in pairs or larger pieces. Requests for the plate position of a stamp or overprint will not be accepted. **Stamps without gum and used varieties must be thoroughly cleaned of all hinges.**

6. Requests for the market or net value of an item will not be accepted nor will an opinion as to the mint never hinged condition be given.

7. The decisions rendered by The American Philatelic Expertizing Service are not guaranteed and are only opinions. No refunds unless no opinion given.

8. Since the meaning of the terms, superb, very fine, etc., are debatable, no opinion as to general condition will be given. Defects and alterations not readily apparent will be noted.

9. All reasonable care will be taken of items submitted for examination, but all items are accepted with the full understanding on the part of the owner that neither the American Philatelic Society, the American Stamp Dealers' Association, nor members of their Expertizing Committees are liable for any loss or damage resulting from any cause whatever except for gross negligence. Since the American Philatelic Expertizing Service is unable to obtain insurance coverage of any kind, an owner desiring coverage must carry his own insurance.

10. The American Philatelic Society and the American Stamp Dealers' Association reserve the right to make such changes without notice to the rules and requirements as they deem necessary, but such changes will be announced as soon as possible.

11. The request for an examination constitutes an acceptance by the owner of all rules and requirements of The American Philatelic Expertizing Service.



No. 10
The
American Philatelic



41182
Expertizing Service

P. O. Box 800
STATE COLLEGE, Pa. 16801

* * *

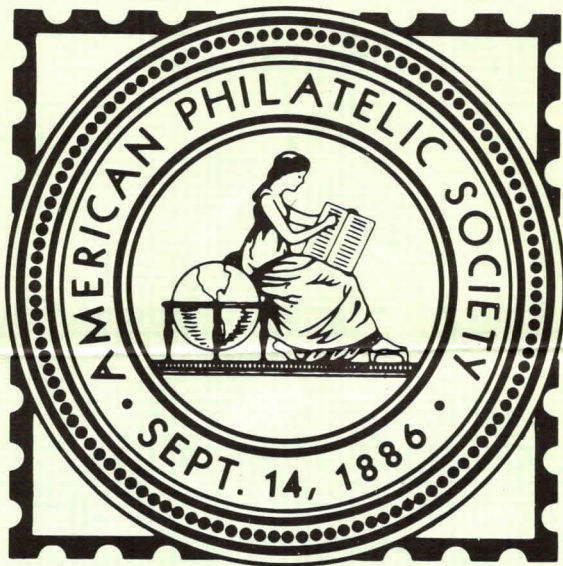
RULES AND REQUIREMENTS

1. Each stamp or cover submitted for examination must be mounted or affixed to a separate form. A coil pair or block shall be considered a single item. Sets of stamps will not be accepted unless individually mounted on separate forms.
2. Each item must be the bona fide property of the individual submitting it for examination. The owner may assign an identification number to each item submitted.
3. The fee for a certificate of opinion, in accordance with the following schedule, **must accompany** each item submitted.

<i>Current Scott Catalogue Value</i>	<i>APS/ASDA Members</i>	<i>Non- Members</i>
\$200 or less	\$ 8.00	\$11.00
Over \$200 to \$1000 and all unpriced items	\$11.00	\$15.00
Over \$1000	\$15.00	\$20.00

The fee for an uncatalogued item will be the same as for an unpriced item. Stamps will not be accepted. Foreign checks, including Canadian, will not be accepted unless drawn upon a United States bank and payable in U.S. dollars at par.

4. One stamped addressed No. 10 (large 9½") envelope must accompany each item submitted plus one small stamped addressed envelope for each item or group of items submitted at one time. The small envelope will be used to acknowledge receipt by returning Owner's Receipt of Expertizing Service form after a number has been assigned. The second envelope (No. 10) will be used to return the item submitted with the report of the opinion



This panel may be removed if certificate is to be folded.



*The
American Philatelic
Expertizing Service*



P.O. BOX 8000
STATE COLLEGE, PA. 16803

CERTIFICATE: 66255

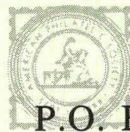
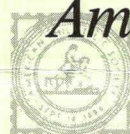


Members of The American Philatelic Expertizing Service have examined the item submitted and it is their opinion that it is

United States, Scott No. 396 line pair, unused, genuine, slightly disturbed original gum? - - - -

Date SEP 21 1998

[Signature]
(APS Authorized Signature)
[Signature]
(ASDA Authorized Signature)
[Signature]
(Administrator Signature)



P.O. Box 8000

STATE COLLEGE, PA. 16803



4-88CBF/5M



*The
American Philatelic
Expertizing Service*



P.O. BOX 8000
STATE COLLEGE, PA. 16803

CERTIFICATE: 105823



Members of The American Philatelic Expertizing Service have examined the item submitted and it is their opinion that it is

United States, Scott No. 70b, steel blue shade, used, genuine, filled thin, repaired tear at bottom. -

Robert E. Lamb

(APS Authorized Signature)

J. B. Swanson

(ASDA Authorized Signature)

A. Mercer Bous

(Administrator Signature)

Date **MAY 5 1997**



22678

Professional

STAMP EXPERTIZING

PSE#22678

CERTIFICATE NO.

One Datan Center, Ste. 1149 • 9100 S. Dadeland Blvd., Miami, FL 33156

02/02/94

CAT #	ISSUE	DENOM	COLOR
US#PR29	1875	\$24.00	Dk Gray Violet

PROFESSIONAL has examined this submission and is of the opinion that:

"it is genuine unused, o.g."

The opinions rendered by PROFESSIONAL are based upon the best judgment and expertise of highly specialized philatelic consultants using current information available to them. PROFESSIONAL's opinions do not constitute a guarantee that an item is genuine or that others may reach a different conclusion as to description. No warranties are therefore expressed or implied in PROFESSIONAL's opinions. The physical condition of a stamp may change with time through improper handling, storage or alteration, therefore, the opinion given here may not apply beyond the date of this certificate. Xeroxes or copies of this certificate are INVALID.

R. Champagne

EXPERTS:

F. Sharp

R. Shoemaker

Chairman, Board of Consultants



16175

Professional

STAMP EXPERTIZING

PSE#16175
CERTIFICATE NO.

One Datan Center, Ste. 1149 • 9100 S. Dadeland Blvd., Miami, FL 33156

03/27/91

CAT #	ISSUE	DENOM	COLOR
US#359	1909	3 Cent	Deep Violet

PROFESSIONAL has examined this submission and is of the opinion that:

"it is genuine unused, o.g."

The opinions rendered by PROFESSIONAL are based upon the best judgment and expertise of highly specialized philatelic consultants using current information available to them. PROFESSIONAL's opinions do not constitute a guarantee that an item is genuine or that others may reach a different conclusion as to description. No warranties are therefore expressed or implied in PROFESSIONAL's opinions. The physical condition of a stamp may change with time through improper handling, storage or alteration, therefore, the opinion given here may not apply beyond the date of this certificate. Xeroxes or copies of this certificate are INVALID.

R. Champagne
EXPERTS: 1

R. Shoemaker
2

M. Banas
3

Chairman, Board of Consultants



29679

Professional Stamp Experts, Inc.

Dadeland Towers North, Suite 600 • 9300 S. Dadeland Blvd. • Miami, FL 33156 • USA

Certificate #29679

Cat#	ISSUE	DENOM.	COLOR
US#72	1861	90 Cent	Blue

PROFESSIONAL has examined this submission and is of the opinion that:

**"it is genuine used with 'Circle of V's' cancel
and small corner crease at upper left".**

The opinions rendered by PSE are based upon the best judgement and expertise of highly specialized philatelic consultants using current information available to them. PSE's opinions do not constitute a guarantee that an item is genuine or that others may reach a different conclusion as to description. No warranties are therefore expressed or implied in PSE opinions. The physical condition of a stamp may change with time through improper handling, storage or alteration. Therefore, the opinion given here may not apply beyond the date of this certificate. Xeroxes or copies of this certificate are INVALID.

1. D. Champagne 2. F. Sharp 3. R. Shoemaker
EXPERTS:



Chairman, Board of Philatelic Consultants
FEBRUARY 1997



28082

Professional Stamp Experts, Inc.

One Dattran Center, Suite 319 • 9100 S. Dadeland Blvd. • Miami, FL 33156 • USA

Certificate #28082

Cat#	ISSUE	DENOM.	COLOR
US#19	1857	1 Cent	Blue

PROFESIONAL has examined this submission and is of the opinion that:

**"it is genuine used, with Black c.d.s. cancel, POS. 91L4
With light corner crease at Lower Right".**

The opinions rendered by PSE are based upon the best judgement and expertise of highly specialized philatelic consultants using current information available to them. PSE's opinions do not constitute a guarantee that an item is genuine or that others may reach a different conclusion as to description. No warranties are therefore expressed or implied in PSE opinions. The physical condition of a stamp may change with time through improper handling, storage or alteration. Therefore, the opinion given here may not apply beyond the date of this certificate. Xeroxes or photocopies of this certificate are INVALID.

1. J. Farrington 2. R. Champagne 3. F. Sharp

EXPERTS:



Chairman, Board of Philatelic Consultants
JULY 1996