



Negative "PAID" in gnd - blue
Nonwich, Conn



"Wells Fargo & Co" - red
"Bankers & Express Forwarders
32 Broadway - NY" in Shield



"U.S. Mail City Delivery" ⁰⁸
"PAID" (New York) - red

"New York Am. PKT."
(Prussian Convention)



"WAY"

"WAY" in circle - blue



"WAY"



"WAY 5" ⁰⁸
Baltimore, Md.

"WAY 5"
New Orleans, La.

"WAY 6" - blue
Richmond, VA.





"U.S. Express Mail"
"Boston"

"U.S. Express Mail"
"N.York"



"U.S. Express Mail"
"Eastport"

"U.S. Express Mail N.Y." - red



Chicago & Rock Island R.R.

Eastern R.R. - blue



"DUE 5" in fancy scroll
CDS Detroit, Mich



"FREE" in CDS

"FREE"

"FREE" - blue

"FREE" - blue



(FOR)WARD(ED)

"New York" packet - red

"NEW 19 YORK"
British Treaty mail



"DP 1." in box - red



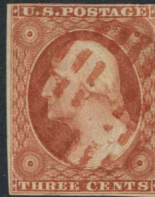
Closed Grid - segmented



Blue

Red

03



03

Open Grid - box shaped



Blue



"STEAM SHIP"

"SHIP"



(ST)EAMBOA(T) - blue

"STEAMBOAT"



"STEAM"

(ST)EAM



New York Ocean Mail



"Louisville & Cincinnati"
"Mail Line"

"Louisville & Cincinnati" - red
"Mail Line"
Segmented cork OB

"L.VILLE & CINTI"
Mail Line - blue



"N.YORK
STEAMSHIP"



"From Steamer Natchez No.2"
"Steam" w/ New Orleans CDS



Fancy

Cross or "X" - blue
OB



Crucifix
Sunderland, VT



Cross
Canton, Miss



3-Leaf clover - blue



Letter "B"
Bridgeport, Conn



"I. Field, P.M."
Harris Square, Mass



Arrowhead



Spiral Pattern
Salem, Mass



Shield
Plymouth Hollow, Conn



Crude Shield



Crude Shield



Year-Dates

1857 year-date



1857 year-date - blue



1858 year-date



1858 year-date - blue



1859 year-date



1859 year-date
Year above month



1859 year-date inside
Concentric circles CDS



1859 year-date - blue



1860 year-date



1860 year-date
Year between month & day



1860 year-date
in octagon CDS



1860 year-date inside
Concentric circles CDS



CSA



1860 year-date inside
Tiny year-date above mo.
Centre Sandwich, NH



1860 year-date - no CDS



1860 year-date - blue



1861 year-date



1861 year-date inside
Concentric circles CDS



1861 mo. & year only inside
Concentric circles CDS



1861 year-date - blue



1861 year-date - blue inside
Concentric circles CDS



Double oval
New London, NH

Unusual

Poplar Ridge, NY



kewanee, IL double circle CDS

Swampcott, Mass
Only one "t"

Mount Vernon, Ky double circle



"Bristoe Station, VA"

"Colliad, Tex CDS

Saint Paris, Ohio

CDS with wavy line above date



Berwick City, LA Fancy CDS

Oval
(...FALLS...Y.)

(...B. VASSAL...?)

New Briton, Staten Island
NY CDS



Blairsville, PA
No date in center of CDS

Single slug in CDS

Abbreviated month (May) - MY



Newport, Mich CDS - green



Town cancels

White Hall, NY CDS - red



Segmented cork
New Baltimore, NY CDS



Saratoga Springs, NY CDS



Single slug in
New York CDS



Dover, MO CDS



Old Point Comfort, VA CDS



Double-circle date-stamp
Ludingtonville, NY



CDS Colors
Dark blue

Light blue

CDS with blue paint
Painted Post, NY



Bright red

Dark red



Bright green

Dark Green

Olive green



Reddish brown

Dark brown



Light ultramarine

Dark ultramarine



Territorial Usage



Tucson N.M.
New Mexico Terr

Camp Floyd
Utah (Territory)



CDS Wabashaw, Minn Terr



CDS Minneapolis, M.T.



"Leavenworth City, K.T."
Kansas Territory - 1859



Kansas Terr. CDS



Town cancels

Corpus Christi, Tex CDS

Crocket, Texas CDS



IRVING COLLEGE, TENN

THEO. SEMINARY, VA.



12-bar open grid - green
Double circle Chicago, Ills

9-bar closed grid - blue
Double circle Chicago, Ills



Rushville, Ind. CDS

Newburgh, PA CDS





Negative 5-point star in circle



Stars

Negative star in pentagon
Putnam, Conn



Hollow 5-point star in circle



Open 5-point star in circle



Hollow star in circle
Ludlow, VT



Solid star in circle
Greenwich, NY



Solid 5-point star in circle



Star with dashes in circle
Madison, Conn / Salem, Ohio ?



Intertwined 6-point star
Chicopee, Mass



Intertwined 6-point star
So. Yarmouth, Mass



Small 6-point star



6-point star
Jefferson, Maine



6-point star in circle



Solid 6-point star with open center



6-point star with ring
Ulster, PA



Stars

Star with dot in hollow center
Williamsburgh, Mass



Star w/ dot in hollow center
Downieville, Cal.



Star with hollow center
Jersey Shore, PA



Star with hollow dot in center



Star with hollow center



5-point Star w/ hollow center



Segmented star
Downieville, Cal



Outlined star
Basher Falls, NY



Negative 5-point star
Northfield, VT ?



Star with screw center - blue
Clappville, Mass



Solid star



Small 5-point star



Small solid star
Haverstraw, NY



Stars

Hollow star
Danvers Centre, Mass



Hollow star - bluish green
Danvers Centre, Mass



Hollow star - blue
Danvers Centre, Mass



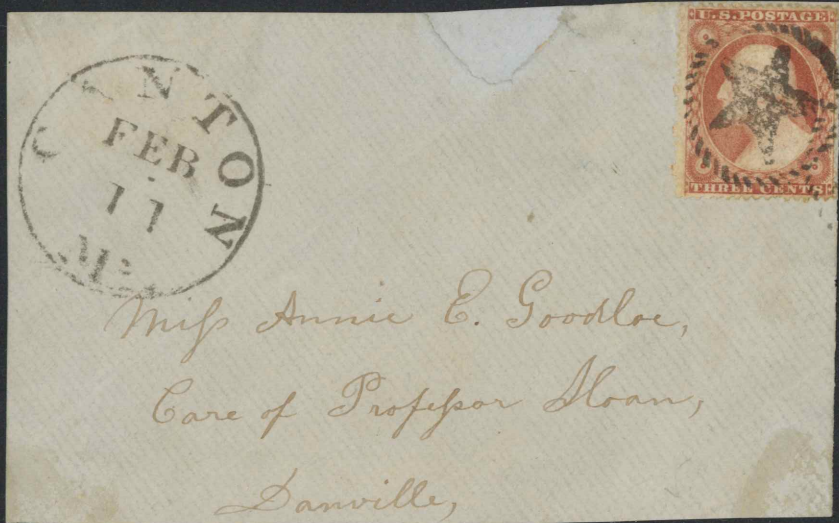
Hollow star - brown
Danvers Centre, Mass



Star in grid
Canaan, Conn



Stars



Star in circle of rope
Canton, Miss

Wells Fargo & Co.
Stockton



Wells Fargo & Co.
Sacramento

Wells Fargo & Co.
Sac. Messenger

Moore's Flat, CA
Langdons Express



Basel Exposition CDS
Switzerland CDS

Great Britain CDS

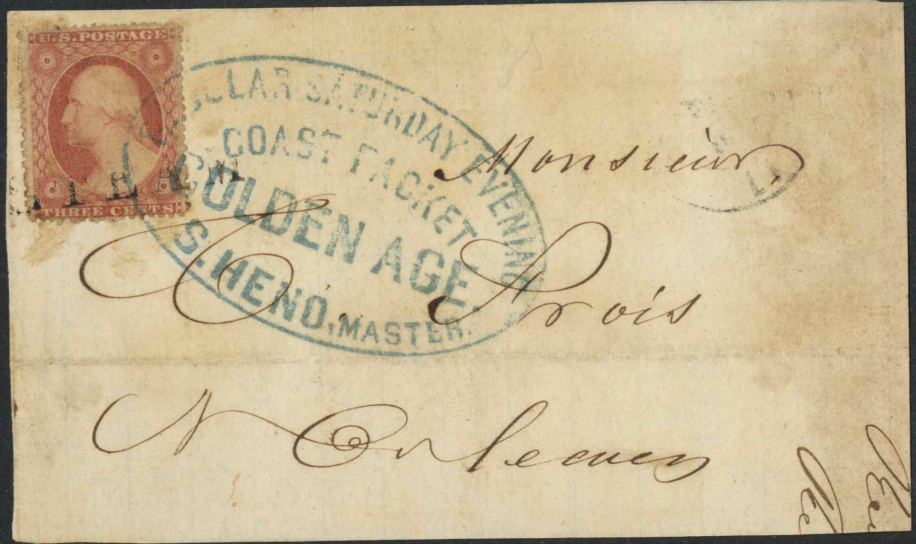
Great Britain
Numeral cancel





1861
PM-PNc 41
Westborough,
Massachusetts





Regular Saturday Evening
Coast Packet Golden Age
S. Heno, Master



"3 Paid" in CDS
Detroit, Mich ?



"PAID" in CDS



NEW YORK
STEAM(SHIP)

"STEAMBOAT"



"STEAM"

L.VILLE & CINTI
MAIL LINE CDS



Saturday Evening Packet
Steamer Natchez, Route 8165

Steamer J.F. Pargoud
J.W. Tobin, Commader

"U.S. MAIL PACKET
NATCHEZ" - river mail



N.Y. & Boston
Steamboat & R.R.

"WAY" with line

"WAY"



Chicago, IL
Supplementary Mail - blue



PAID US Mail "1"
City Delivery - red

U.S. MAIL "1" - red
City Delivery

U. S. P. O. Dispatch
Pre-Paid One Cent



(D)ue 3

"POSTAG(E)
DUE"



"FREE"

"FREE"

"FREE" inside CDS



"FREE" in circle

"FREE" - blue

"FREE" in oval



Railroads

N.Y. & Boston
Steam & R.R.R.

Eastern R.R.

Baltimore R.R.

Lou.&Fran.&Lex.&Fran. R.R.



Morris & Essex R.R.

Express Mail
Eastpost

N.York 12 U.S. Pkt PAID - red
Bremen Convention Mail

"NEW 19 YORK" - red
British Treaty Mail



"New-York Ship" CDS

New York ocean mail

Boston Br (Packet)
French Convention Mail

From Regular Frieght & Pass.
Steamer Paul Jones



Concentric Circles



Circle





"OCT 23 1858"
Pigeon Hill, Ark



Manuscript Cancels



"Jenny Lind Cal Feb 25"
Ex. Simpson

"Oct 19 1858
Snachwine, Ills"

"Flint Creek" (Miss)
"July 12, 1857"



"W" precancel
Weston, Mass

"3"



Manuscript date
Hedgesville, VA CDS



"1856" ???
Stamp issued in 1857

Manuscript Cancels



First National Bank of ???
Possible revenue usage?



Late Usage

PAID ALL in circle
Probably 1870s usage



1894



Circle of Wedges



Hollow wedges

Dot in wedges



Segmented wedges



Blue



Circle of "V"s

Circle of "V"s
Wilson's, NY



Blue





Mr. Arthur Lott

Winnover

New Hampshire

Circle of wedges
Boscawen, NH

"DUE3" on label
(covers manuscript notation)

Closed Grids - bars touching

Blue



Red



Green



Violet



Closed Grid - bars not touching



Blue



Closed Grid - circle & bars segmented



Closed Grid - circle & bars segmented

Blue



Closed Grid with segmented bars

