



The picturesque Oahu Railway. There are daily trains from Honolulu to the beautiful Haleiwa Hotel, and to Leilehua. Also combined auto and rail trips around the island through the Wahiawa pineapple fields, with a stay at Haleiwa. \$10 covers all expenses of this two-day trip.

From San Francisco Around the Pacific

Toyo Kisen Kaisha is the largest steamship company operating between San Francisco, Hawaii, Japan, and the Orient. It maintains fast and frequent service across the Pacific, following the "Pathway of the Sun" along the semi-tropic route. This is one of the most delightful ocean voyages in the world, as it carries the passenger over smoothest seas and, by touching at Honolulu, affords a pleasant break in the journey. The steamers of this line are of the most advanced types, having been built especially for this service.

The fleet consists of vessels of various sizes, from the giant liners of 22,000 tons, to the smaller but no less comfortable vessels of 10,000 tons.

Toyo Kisen Kaisha maintains its own agents in the principal cities of the world, thus enabling travelers to secure definite information regarding rates and sailings at all times.

The head office is in Tokyo, Japan, with a general office in Yokohama. The San Francisco office is on the fourth floor of the Merchants National Bank Building at 625 Market street, and in Honolulu it is care of Castle & Cooke, Ltd.

The Pacific Steamship Company operates palatial steamers from Alaska to the Mexican border.

It has arranged with all the railroads of the United States and Canada for trips along the Pacific Coast, without other cost than unused portions of railway tickets.

Should your destination be San Francisco-Oakland, you can make the trip either through Los Angeles, using the ocean steamers from Los Angeles to San Francisco, or else you can proceed by railroad to Seattle-Tacoma-Victoria and from there experience the delights of an ocean voyage. As berth and meals are included at sea, you will have no extra expense.

'Tis said, "Americans are always in a hurry," but thousands will welcome the opportunity to see more cities, more of the wonderful country in which they live, and to gain larger and valuable experience with-

out extra cost. It is real economy to get the most your money will buy.

These attractive tickets are on sale at every railroad ticket office. They may be bought as easily and cost no more than tickets that include much less.

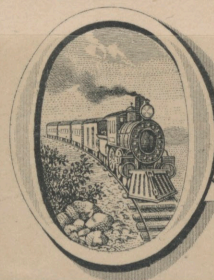
In San Francisco, the Pacific Steamship Company has spacious offices at 112 Market street, as well as agencies in every city on the Pacific Coast, and in the larger cities of America. E. G. McMicken is the general manager in San Francisco.

Several hotels in San Francisco make a specialty of entertaining visitors from Hawaii and Pacific lands. The Hotel Stewart, on Geary street, just off Union Square, is a new steel-concrete-brick structure, with 300 rooms, and 300 connecting bathrooms. The rates are \$1.50 a day, with an additional cost of sixty cents for breakfast, sixty cents for lunch, and one dollar for dinner.

This hotel is in the center of the theatre and retail districts, on car lines transferring to all parts of the city. The hotel motorbus meets trains and steamers.

The Clift, San Francisco's *likable* hotel, is at the corner of Geary and Taylor streets. Obadiah Rich is manager and this means much to people from Pacific lands visiting San Francisco, who desire location in the down-town district with perfect service. The rates are right, reasonable, on both American and European plans. Every room has an adjoining bath. For one person, European plan, \$2.00 to \$4.00 per day; for two, \$3.50 to \$6.00. American plan, \$5.00 a day and up. The hotel is absolutely fireproof and reservations may be made by wire or mail. Frederick C. Clift is president of the company.

San Francisco's newest hotel is the Plaza, facing Union Square, Post and Stockton streets. It has a capacity of 600 guests; European plan, \$1.50 to \$5.00 a day; American plan, \$3.00 to \$7.00 a day. There are numerous combination sample rooms. C. A. Gonder is the manager of the Hotel Plaza Company.



OAHU RAILWAY
AND
LAND COMPANY

HONOLULU, H. I.

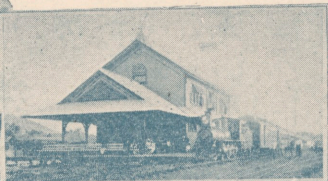


OAHU RAILWAY & LAND CO. RAN ITS INITIAL TRIP ON SEPT. 4 1889. CARRIED POSTAL MATTERS TO THE REGULAR POST OFFICES, SUCH MAIL WAS POSTMARKED WITH THE COMPANY'S HANDSTAMP.



PEARL CITY STA.
SCARCE!





GREETINGS
from
HAWAII

O. R. & L Co.

POSTAL CARD

CARTE POSTALE



Private Mailing Card



PLACE
A
ONE-CENT
STAMP
HERE

Authorized by Act of Congress May 19, 1898

THIS SIDE IS EXCLUSIVELY FOR THE ADDRESS

#10

This is the station where we take the train for the city or country ways.



"Aiea Railroad Station"

This is a Hint From



Still Looking for That Letter



POST CARD

FOR CORRESPONDENCE

FOR ADDRESS ONLY

1128
N.Y. Frigate
Hawaii
Hawaii
Hawaii

2
1/2

Dear friend - I certainly
will be anxious awaiting
your photo - do you say
you was sending it.
Ha, ha, those cards star
I've been sending you
they are all from the
Island where I live.
Some of them are views
from the city of Honolulu,
which I believe is just
a few miles from where I live.

Mr. John Hall.
181 Pierre Ave.,
Grafiel, New Jersey.
U.S.A.