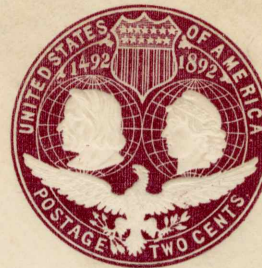


ESSAY: Two Cent; Type 1 - E2a; Size 111-142

SPECIMEN.

IMPRESSION OF FIRST DIE OF
COLUMBIAN STAMPED ENVELOPES,
SUBMITTED TO THE POSTMASTER-GENERAL
DECEMBER 30, 1893.



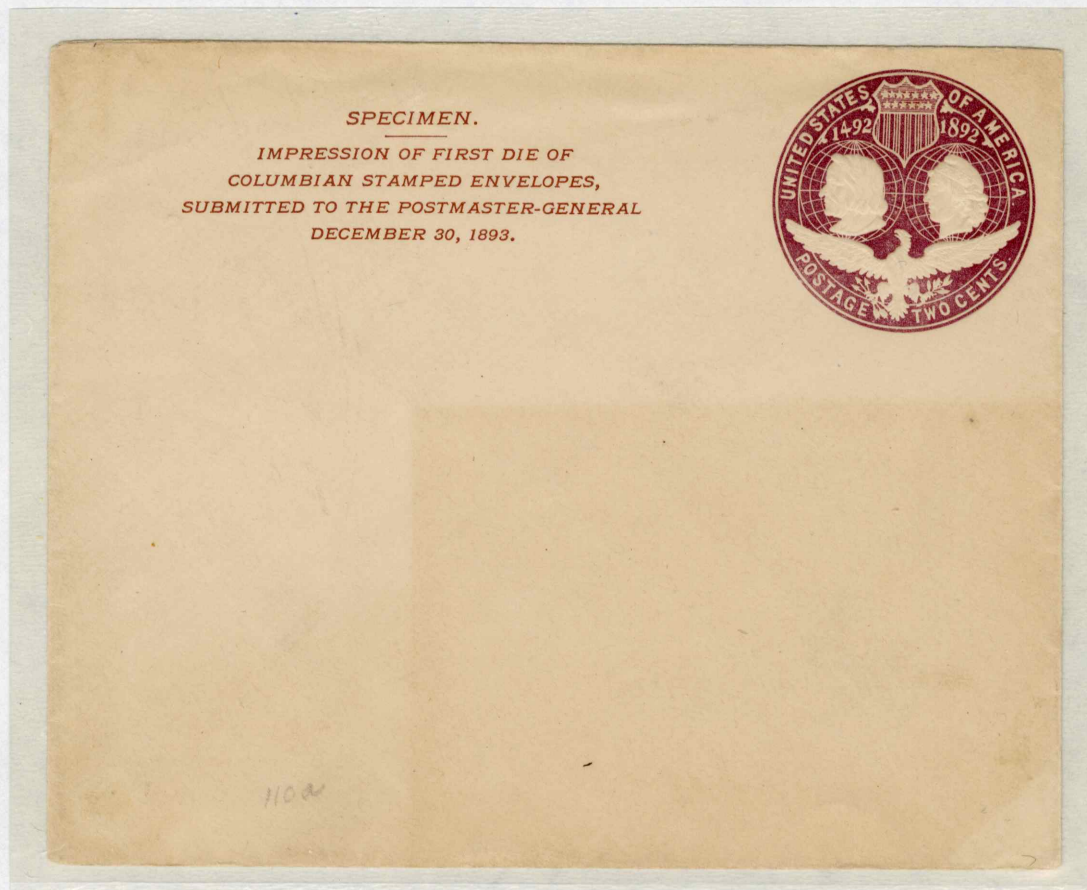
SPECIMEN.

IMPRESSION OF FIRST DIE OF
COLUMBIAN STAMPED ENVELOPES,
SUBMITTED TO THE POSTMASTER-GENERAL
DECEMBER 30, 1893.



ESSAY: Two Cent; Type 1 - E2b; Size 111-142

Approval for production of United States Columbian Postal Stationery was made on December 5, 1892. The Contractors, Morgan Envelope Company and Plimpton Manufacturing Company, were instructed to prepare Die Designs as soon as practical. Various types of Essays, printed on various types of paper, were prepared and submitted to the Postmaster General on December 30, 1892. Following are examples of Essays submitted on December 30, 1892.



United States Columbian Postal Stationery Essay.

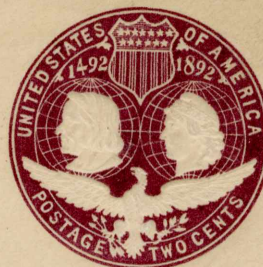
ESSAY: Two Cent; Type 1-Ela; Size 108-133

Type ONE (1) Essay has very wide wings that extend almost to the Outer Frame line and has no Side Ornaments.

SPECIMEN.
IMPRESSION OF FIRST DIE OF
COLUMBIAN STAMPED ENVELOPES,
SUBMITTED TO THE POSTMASTER-GENERAL
DECEMBER 30, 1893.



SPECIMEN.
IMPRESSION OF FIRST DIE OF
COLUMBIAN STAMPED ENVELOPES,
SUBMITTED TO THE POSTMASTER-GENERAL
DECEMBER 30, 1893.



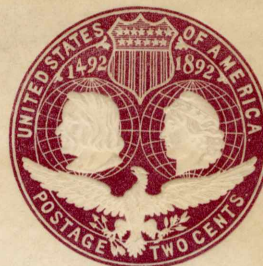
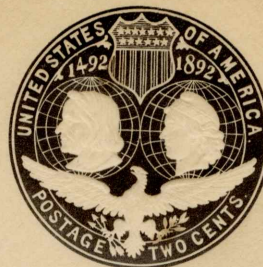
ESSAY; Two Cent; Type 1 - Elb; Size 108 - 133

The two same type SPECIMEN are presented
to show slight color shade variations.

ESSAY: Two Cent; Type 1 - Elc; Size 108-133

SPECIMEN.

*IMPRESSION OF FIRST DIE OF
COLUMBIAN STAMPED ENVELOPES,
SUBMITTED TO THE POSTMASTER-GENERAL
DECEMBER 30, 1893.*

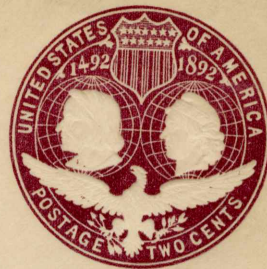


ESSAY: Two Cent; Type 1 - Elh; Size 108-133

ESSAY: Two Cent; Type 1 - E2c; 111-142



SPECIMEN.
IMPRESSION OF FIRST DIE OF
COLUMBIAN STAMPED ENVELOPES,
SUBMITTED TO THE POSTMASTER-GENERAL
DECEMBER 30, 1893.



ESSAY: Two Cent; Type 1 - E2c; 111-42