



Moyen Bros.

Druggists.

1595 Milwaukee ave
city.

728 WORLDS FAIR STA. Fine JUL 7 type 2 h/s on 1c Columbian entire.
Seal of German Commissioner to the expo. VF \$75-100

UNITED STATES 1893 COLUMBIAN COMMEMORATIVE
POSTAL STATIONERY ISSUE.

THE PURPOSE OF THIS EXHIBIT IS TO SHOW FACETS OF THE
PLANNING, DEVELOPMENT, PRODUCTION, AND USAGES OF THE
UNITED STATES COLUMBIAN COMMEMORATIVE POSTAL STATIONERY.

The following items are Photo Copies of proposed designs for the 1893 United States Columbian Postal Stationery. Apparently the proposed designs had been submitted to the Office of Postmaster General, where Photo Copies were made and submitted to various Officials or individuals for comment and suggestions for a final design.





The Auction Description of this item was, "Cover E 2c Violet Columbian Essay Entire-149x93mm, Thorp No. 113 Variety, Unlisted in Catalogue, rare and very Fine, ex-Barkhausen".

In a search for information one Philatelist's Opinion was, "It is off-color, and is a relatively poor print of Thorp 1563, Size P, Die 2A1, Watermark 11, 149x93 mm, therefore it could be a Trial Color Proof". Another Philatelist's opinion is, "It could be an error of Color, as the color is very similar to the normal 5c Columbian".

At the least, this is an Interesting, Controversial, Different, Unusual and Rare Item.

The Expression "KNIFE" as used in discussions of this Exhibit refer to the device used to cut envelope paper to size prior to folding and assembling the finished envelopes. The Envelope shown below has been "unglued" to show the overall shape of the "A" type envelope which was cut with Knife 48.



Thorp No. 1557; Size A; Knife 48; Die 1-C-1

For the Columbian Postal Stationery there were eight Envelope sizes, A, G, H, I, N, P, Q, and R, which were cut by Knives 48, 51, 58, 59, 61, 62, 63, and 64. There were twenty-two envelope size-denomination combinations.



Thorp 1574; Size P; Knife 62; Die 2-C-1

AN ERROR OF COLOR?

This cover was postally used to Germany, with no additional postage, and no indication that it was a reduced rate. The color matches that of the regular Columbian Five Cent Envelope and it apparently was not questioned by either United States or German Postal Personnel.



ESSAY: Two Cent; Type 3 - E6e; Size Q 95-160

*issued entire
now
see p 181*

If not called for within TEN DAYS, return to



T. D. RANDALL & Co.
FRUIT AND PRODUCE MERCHANTS,
No. 219 South Water Street,
CHICAGO, ILL.



John Eigenberg
Golden
Ill

ALMOST AN ALBINO

THE LAWRENCE CEMENT COMPANY,
MANUFACTURERS OF
"Hoffman" Rosendale Cement,
67 WILLIAM STREET,
NEW YORK.
P. O. Box 449.



Thorp 1583
Size G
Knife 51
Die 2-D-2

A Printer's Problem,
a misplaced stamp,
dropped down.



Return to
SHEPARD & MORSE LUMBER CO.,
Box 5297, BOSTON, Mass.,
If not delivered within 5 days.

Thorp 1563; Size P; Knife 62; Die 2-A-1

A double Impression, maybe a printing
mistake or perhaps "Printer's Waste".



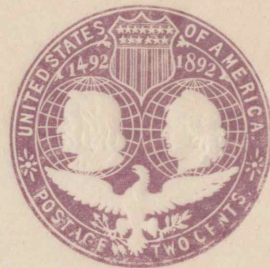
A DOUBLE IMPRESSION

One inked in the normal color and the other
showing on the right with no ink.

This Envelope is Die Type "A"; Size N; and Knife 58.

This Envelope Die Type and Size is not listed in
Thorp or UPSS Catalogue of Stamped Envelopes.

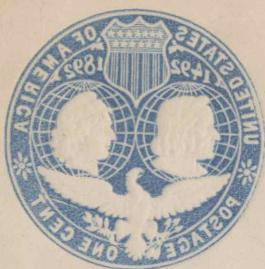
THIS ENVELOPE APPEARS TO BE AN UNIQUE ITEM.



I-A-S of

AN OFFSET PRINTING

Thorp 1561, Size R, Knife 64, Die 1 C 3





Printed on the
wrong end and
in reverse.

Thorp 1577
Size I
Knife 61
Die 2-C-5



Printed on the
wrong end and
and in reverse.

Thorp 1611
Size H
Knife 59
Die 10-C-1

Thorp No. 1598
Scott No. U350
Size H
Knife 59
Die 5-B-1

Another Printing Problem.

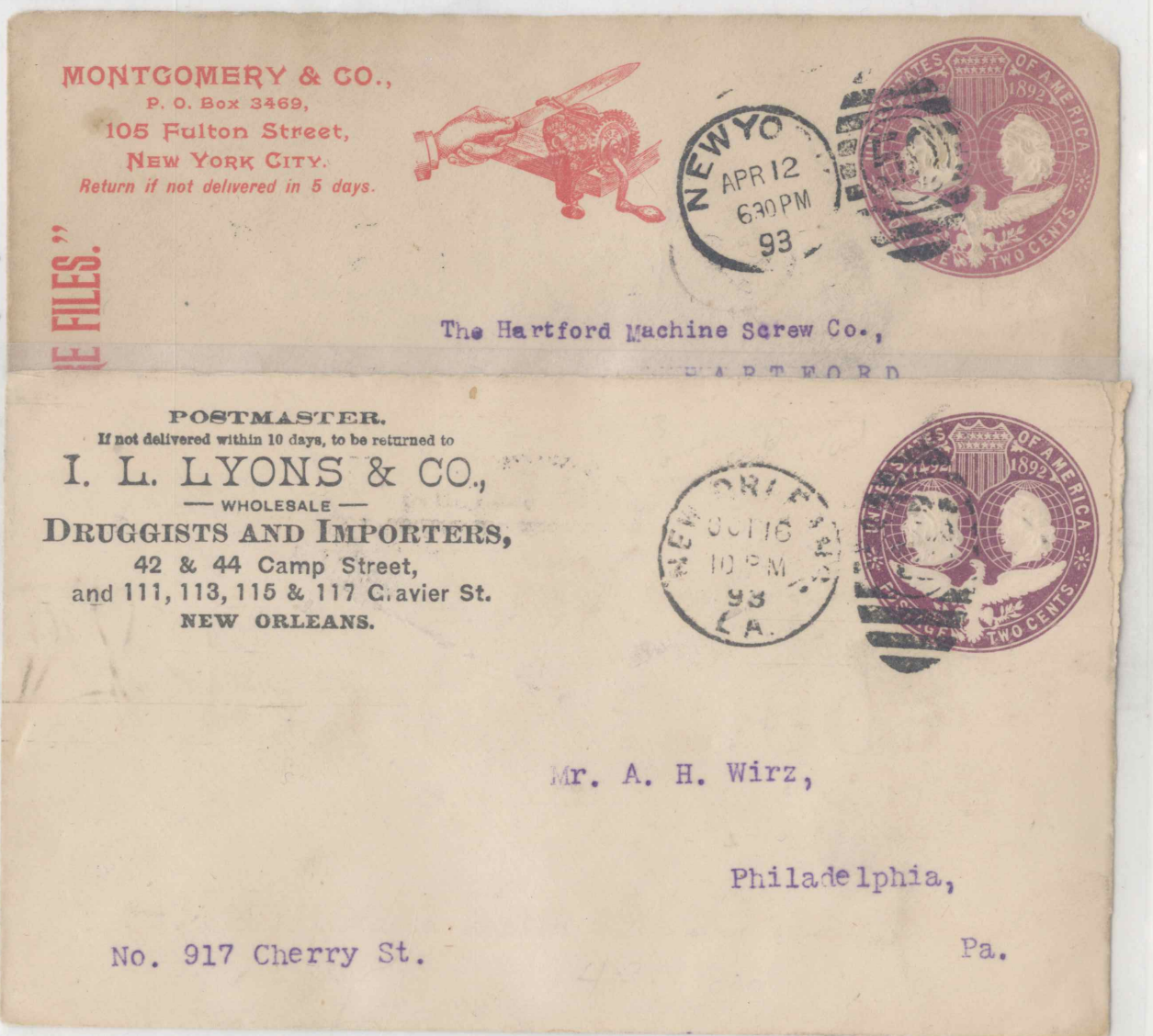


The Stamp on this entire United States Columbian Envelope has about one fourth of the printing of the Stamp missing, probably as a result of some unspecified printing problem.

Thorp 1570; Size Q; Knife 63; Die 2B1

These two envelopes show the contrast in the early and later printings of Thorp 1566.

Thorp 1566; Size Q; Knife 63; Die 2-A-1 Early. This is the early printing and shows the inferior detail of the early printings.

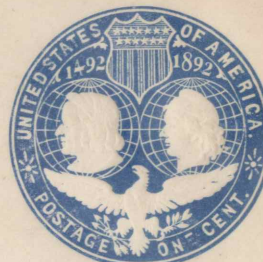


Thorp 1566; Size Q; Knife 63; Die 2-A-1 Late. This is of the later printings and shows the better printing detail of the later Printings.

COLOR SHADE VARIATIONS

During the printing of the United States Columbian Postal Stationery it was apparently very difficult to maintain a constant and uniform shade of colors used for the various denominations. Apparently the mixing and blending of the inks used for the printing were not exact and the materials were most likely not well standardized. The color shades at the beginning of a printing run would likely vary considerably from that at the end of an individual printing run. Also shade variations could vary considerably from printings that were spaced at a month or more apart, which would most likely have different mixtures of ink components.

Thorp 1549a; Dark Blue; Size P; Knife 62; Die 1-A-1



Thorp 1549b; Milky Blue; Size P; Knife 62; Die 1-A-1

COLOR SHADE VARIATIONS



Thorp 1554a
Dark Blue
Size Q
Knife 63
Die 1-B-1



Thorp 1554b
Milky Blue
Size Q
Knife 63
Die 1-B-1



Thorp 1560a
Dark Blue
Size N
Knife 58
Die 1-C-3

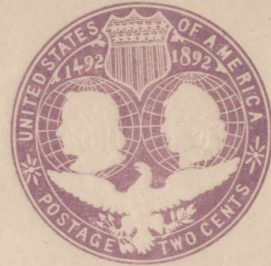


Thorp 1560b
Light Blue
Size N
Knife 58
Die 1-C-3

COLOR SHADE VARIATIONS



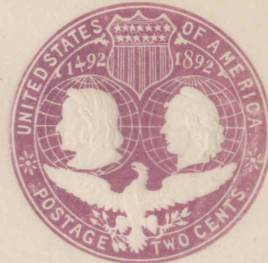
Thorp 1563a
Dark Violet
Size P
Knife 62
Die 2-A-3



Thorp 1563b
Red Violet
Size P
Knife 62
Die 2-A-3



Thorp 1566a
Dark Violet
Size Q
Knife 63
Die 2-A-1

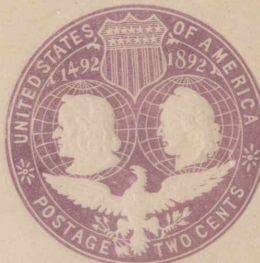


Thorp 1566b
Red Violet
Size Q
Knife 63
Die 2-A-1

COLOR SHADE VARIATIONS



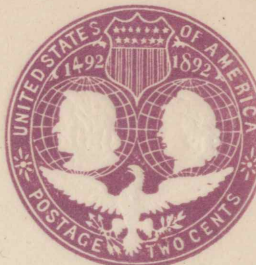
Thorp 1572a
Dark Violet
Size A
Knife 48
Die 2-C-10



Thorp 1572b
Red Violet
Size A
Knife 48
Die 2-C-10



Thorp 1579a
Dark Violet
Size N
Knife 58
Die 2-C-1

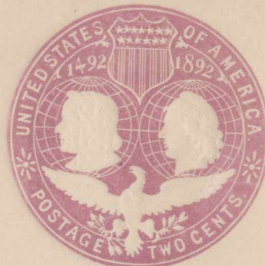


Thorp 1579b
Red Violet
Size N
Knife 58
Die 2-C-1

COLOR SHADE VARIATIONS



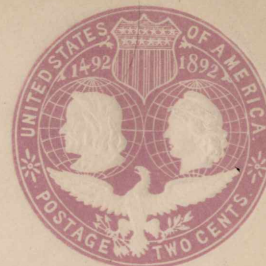
Thorp 1569a
Dark Violet
Size P
Knife 62
Die 2-B-2



Thorp 1569b
Light Violet
Size P
Knife 62
Die 2-B-2



Thorp 1570a
Dark Violet
Size Q
Knife 63
Die 2-B-1



Thorp 1570b
Light Violet
Size Q
Knife 63
Die 2-B-1

W W. WILLIAMSON

AGENT

Rooms 40-41 1st, National Bank Bldg

150

COLOR SHADE VARIATIONS



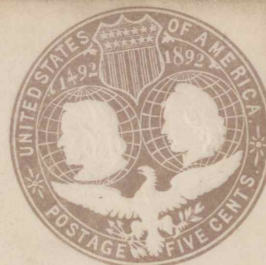
Thorp 1590a
Dark Brown
Size P
Knife 62
Die 5-A-1



Thorp 1590b
Light Brown
Size P
Knife 62
Die 5-A-1



Thorp 1595a
Dark Brown
Size R
Knife 64
Die 5-A-1



Thorp 1595a
Light Brown
Size R
Knife 64
Die 5-A-1

COLOR SHADE VARIATIONS



Thorp 1600a
Dark Brown
Size Q
Knife 63
Die 5-B-1



Thorp 1600b
Light Brown
Size Q
Knife 63
Die 5-B-1



Thorp 1601a
Medium Dark
Brown
Size R
Knife 64
Die 5-B-1



Thorp 1601b
Medium light
Brown
Size R
Knife 64
Die 5-B-1

COLOR SHADE VARIATIONS



Thorp 1610a
Dark Slate
Size Q
Knife 63
Die 10-C-1



Thorp 1610b
Light Slate
Size Q
Knife 63
Die 10-C-1



Thorp 1610a
Dark Slate
Almost Black
Size Q
Knife 63
Die 10-C-1

*If not delivered in Five Days return to
H. E. DEATS,
FLEMINGTON, NEW JERSEY.*



Thorp 1610b
Light Slate
Almost Brown
Size Q
Knife 63
Die 10-C-1

REVALUED

Thorp 1555, Size N, Knife 58, Die 1-B-1



REVALUED

Thorp 1557, Size A, Knife 48, Die 1-C-1

REVALUED ITEMS

The Envelope below and the two on the following Page are Type 8, Revalued as a result of change in rates effective April 15, 1925 pertaining to Mailing printed matter.



Thorp 1549, Size P, Knife 62, Die 1-A-1



Mr. Oscar Lutzman

140 Invaliden Str

Berlin N^o 4

Germany

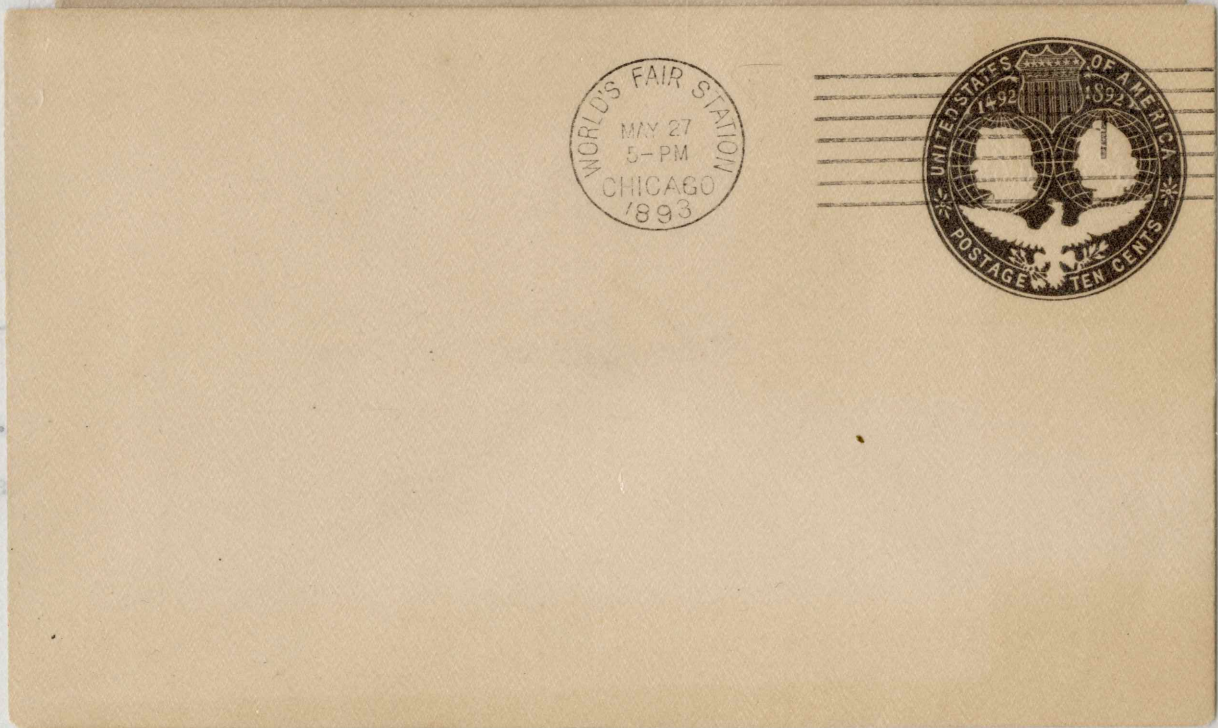
1000

Thorp 1593
Size I
Knife 61
Die 5-A-1

Thorp 1550
Size Q
Knife 63
Die 1-A-1

A World's Fair Station Cancellation, probably as an accomodation for a "hand back" for convenience to persons attending the "World's Fair Postal Station.

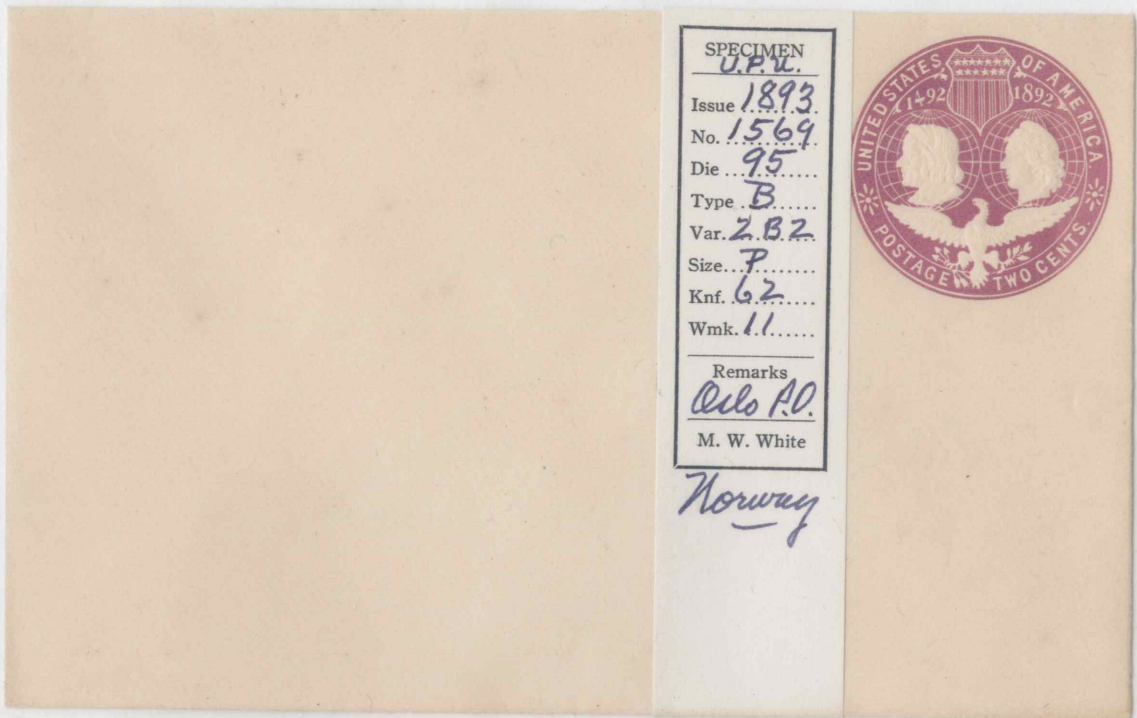
Thorp 1574; Size P; Knife 62; Die 2-C-3



Thorp 1610; Size Q; Knife 63; Die 10-C-1

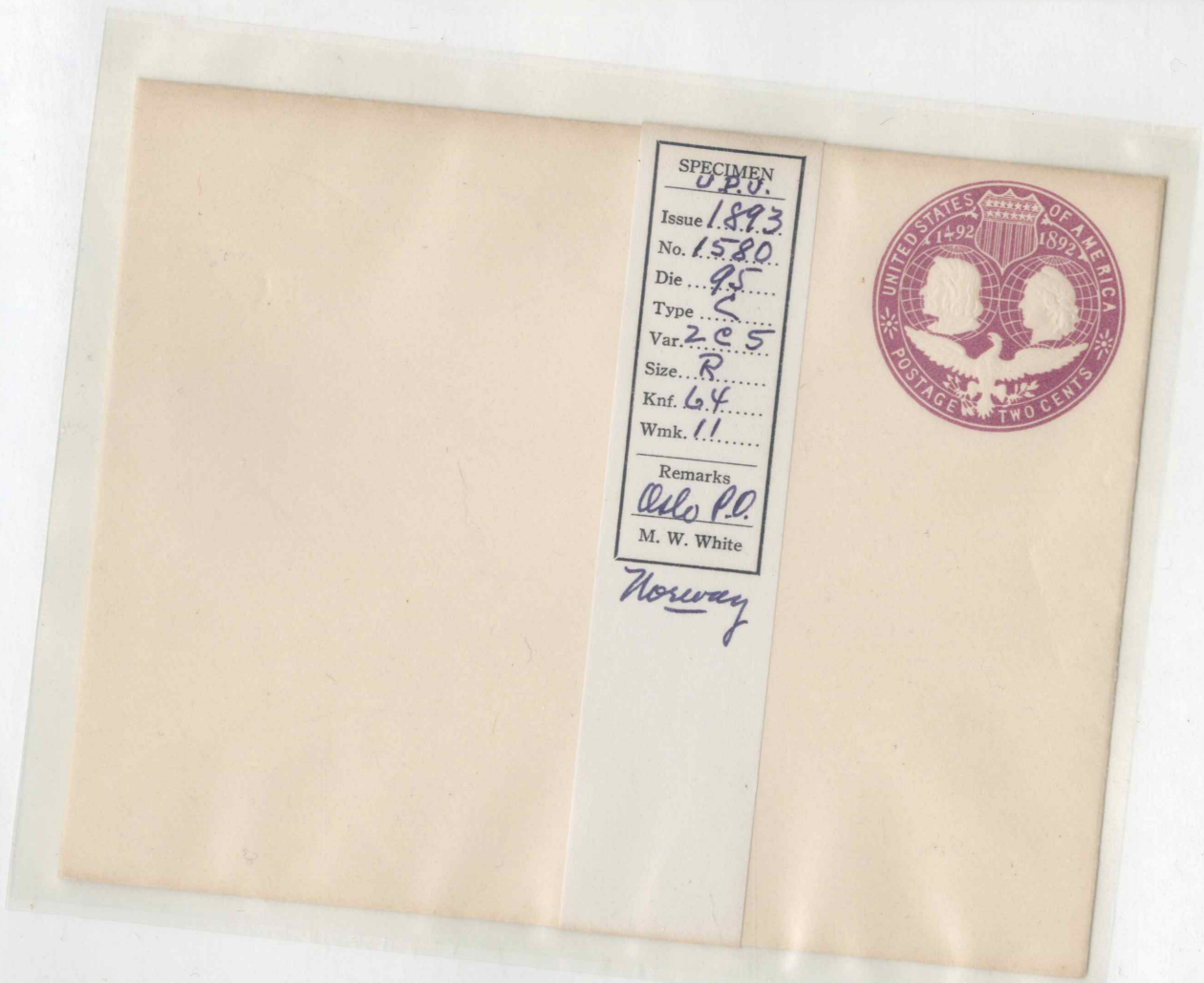
A World's Fair Station Chicago May 27, 1893 5PM cancellation on the First Day that the World's Fair Postal Station was in operation.

UNIVERSAL POSTAL UNION EXCHANGE ITEMS



SPECIMEN
U.P.U.
Issue *1893*
No. *1569*
Die *95*
Type *B*
Var. *2.B.2*
Size *P*
Knf. *62*
Wmk. *11*
Remarks
Olds P.O.
M. W. White

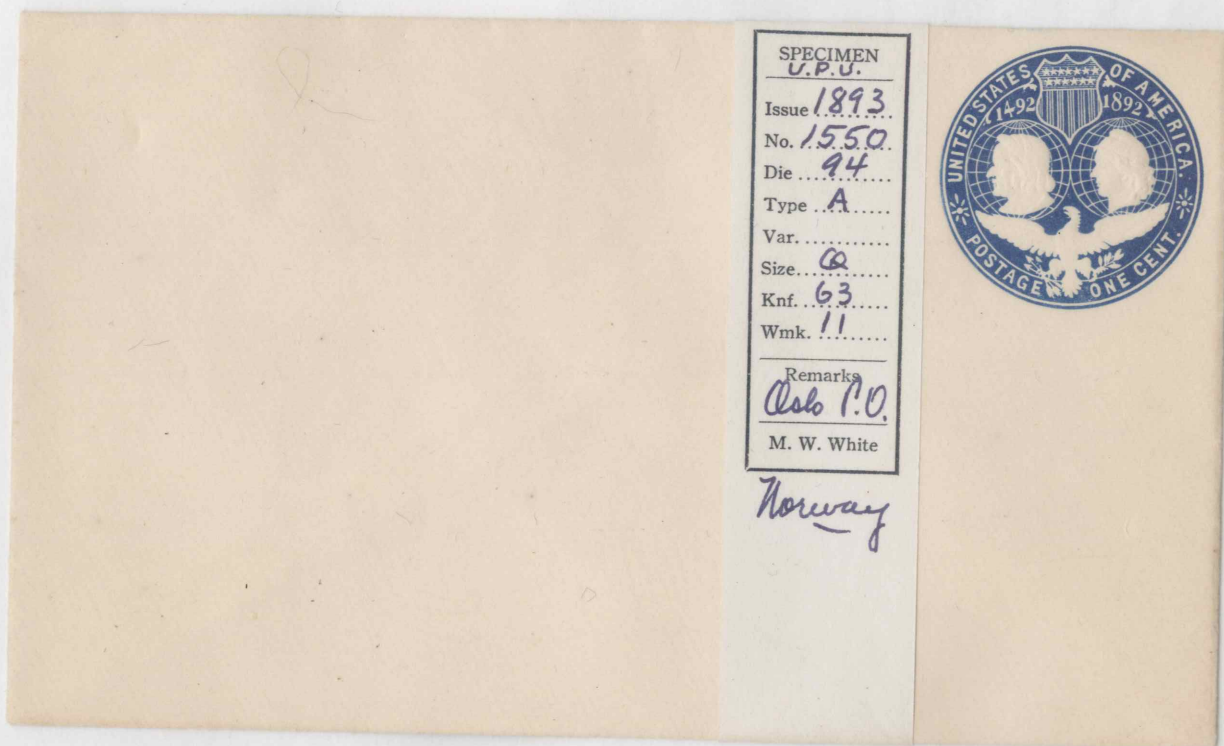
Norway



SPECIMEN
U.P.U.
Issue *1893*
No. *1580*
Die *95*
Type *C*
Var. *2.C.5*
Size *R*
Knf. *64*
Wmk. *11*
Remarks
Olds P.O.
M. W. White

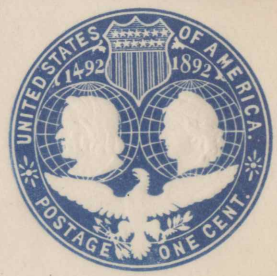
Norway

Eighteen Thousand copies of the 1893 United States Columbian Postal Stationery were selected to furnish items to Universal Postal Union Members. The following seven envelopes were sent to Norway to comply with U.P.U. requirements relative to Exchange of information concerning issuance of new Postal items. How these items were obtained by the Postal Stationery Expert Marcus W. White would be an interesting story. Pertinent information concerning the following seven items appears on the Certified M. W. White information bands.



SPECIMEN
U.P.U.
Issue 1893
No. 1550
Die 94
Type A
Var.
Size 60
Knf. 63
Wmk. 11
Remarks
Oslo P.O.
M. W. White

Norway



UNIVERSAL
POSTAL
UNION
EXCHANGE
ITEMS



SPECIMEN	
U.P.U.	
Issue	1893
No.	1592
Die	96
Type	A
Var.	
Size	H
Knf.	57
Wmk.	11
Remarks	<i>Oslo PD</i>
M. W. White	

Norway

SPECIMEN	
U.P.U.	
Issue	1893
No.	1601
Die	96
Type	B
Var.	
Size	R
Knf.	64
Wmk.	11
Remarks	<i>Oslo PD</i>
M. W. White	

Norway



UNIVERSAL POSTAL
UNION EXCHANGE
ITEM



SPECIMEN	U.P.U.
Issue	1893
No.	1576
Die	95
Type	C
Var.	203
Size	H
Knf.	59
Wmk.	11
Remarks	Also PD
	M. W. White
	Norway

UNIVERSAL POSTAL
UNION EXCHANGE
ITEM



SPECIMEN	CPU.
Issue	1883
No.	1611
Die	97
Type	
Var.	
Size	H
Knf.	59
Wmk.	1
Remarks	Sub 10
M. W. White	

Norway

Post

Interesting covers to an early Philatelic Crook

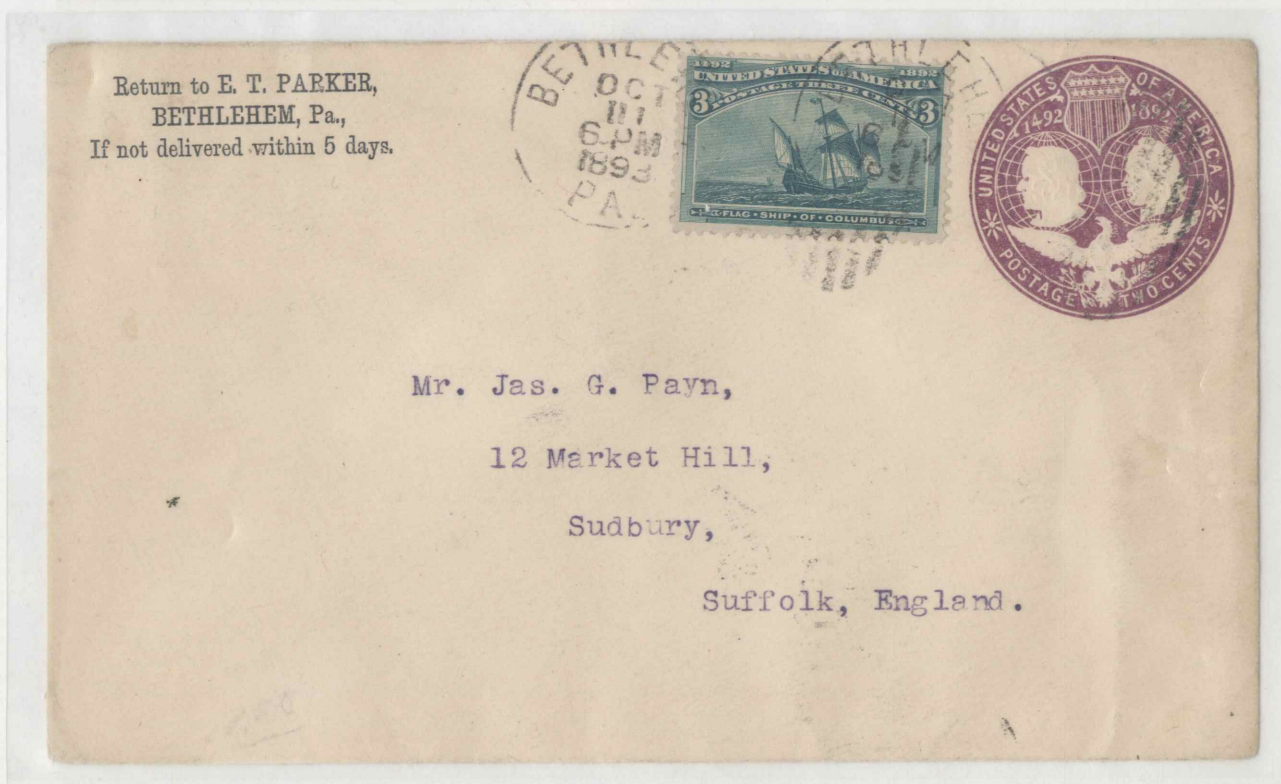


Both Thorp 1549; Size P; Knife 62; Die 1-A-1

On page 48 of Herman Herst's Book "Fun and Profit in Stamp Collecting" the following information appears, "_____ a Stamp Dealer Rogue from San Francisco, a Frenchman named Georges Carion".

Foreign Usages of U. S. Columbian Postal Stationery.

Thorp 1553; Size P; Knife 62; Die 1B1



Thorp 1566; Size Q; Knife 63; Die 2A4

EXAMPLES OF USAGE

Thorp 1561; Size R; Knife 64; Die 1-C-1

One cent rate for printed material to Belgium.



Thorp 1549; Size P; Knife 62; Die 1-A-1
One cent rate for printed material to Germany.

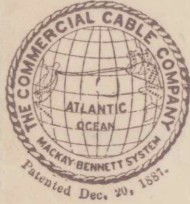
Typical Foreign Usage

Thorp 1590, Size P, Knife 66, Die 5 A 1



Thorp 1574, Size P, Knife 62, Die 2 C 7

Commercial Usages of United States
Columbian Postal Stationery
Thorp 1566; Size Q; Knife 63; Die 2-A-7



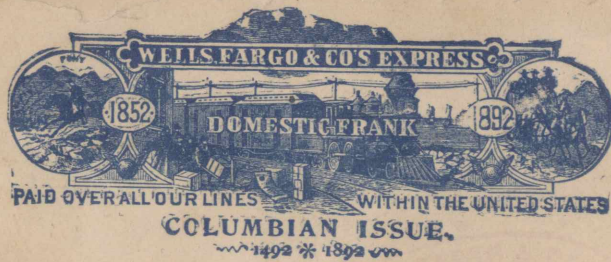
OFFICE OF SUPPLY DEPARTMENT, ROOM 6, 55 BROADWAY, N. Y.

"THE POSTAL" REACHES
All Important Commercial Points
IN THE
UNITED STATES & CANADA.



To *Noel Higgins & Co*
Toronto
T.S.

CABLE MESSAGES TO ALL PARTS OF THE WORLD "VIA COMMERCIAL."



S. Menzies & Co.
514 Battery St.
San Francisco
Cal

Thorp 1574; Size P; Knife 62; Die 2-C-3



U. S. Columbian Postal Stationery with postage Due Stamps are difficult to find.

A late usage of U. S. Columbian Postal Stationery that indicates the revival of interest in the Columbian Issue of Stamps that occurred during the late "twenties" and "early thirties".

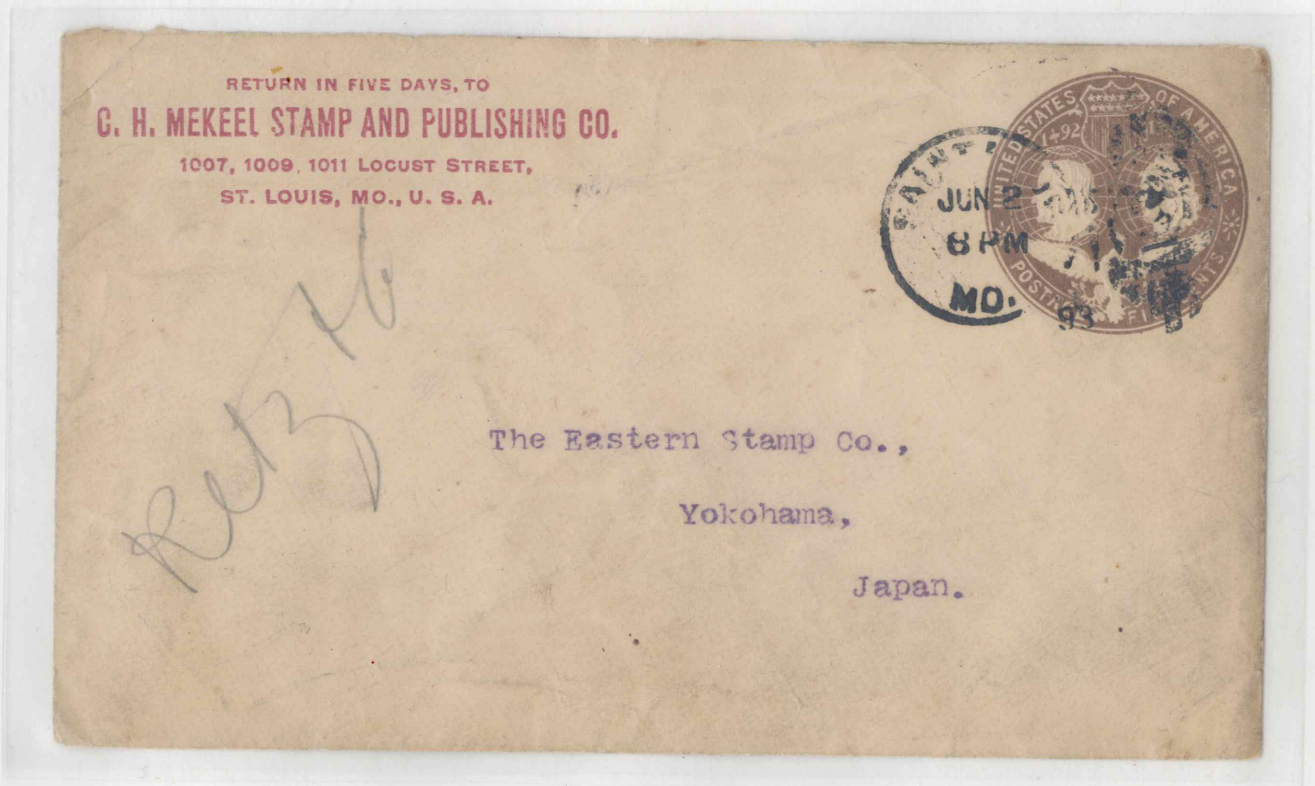


Foreign Usages of U. S. Columbian Postal Stationery
Thorp 1574; Size P; Knife 62; Die 2C7



Thorp 1594; Size Q; Knife 63; Die 5A1

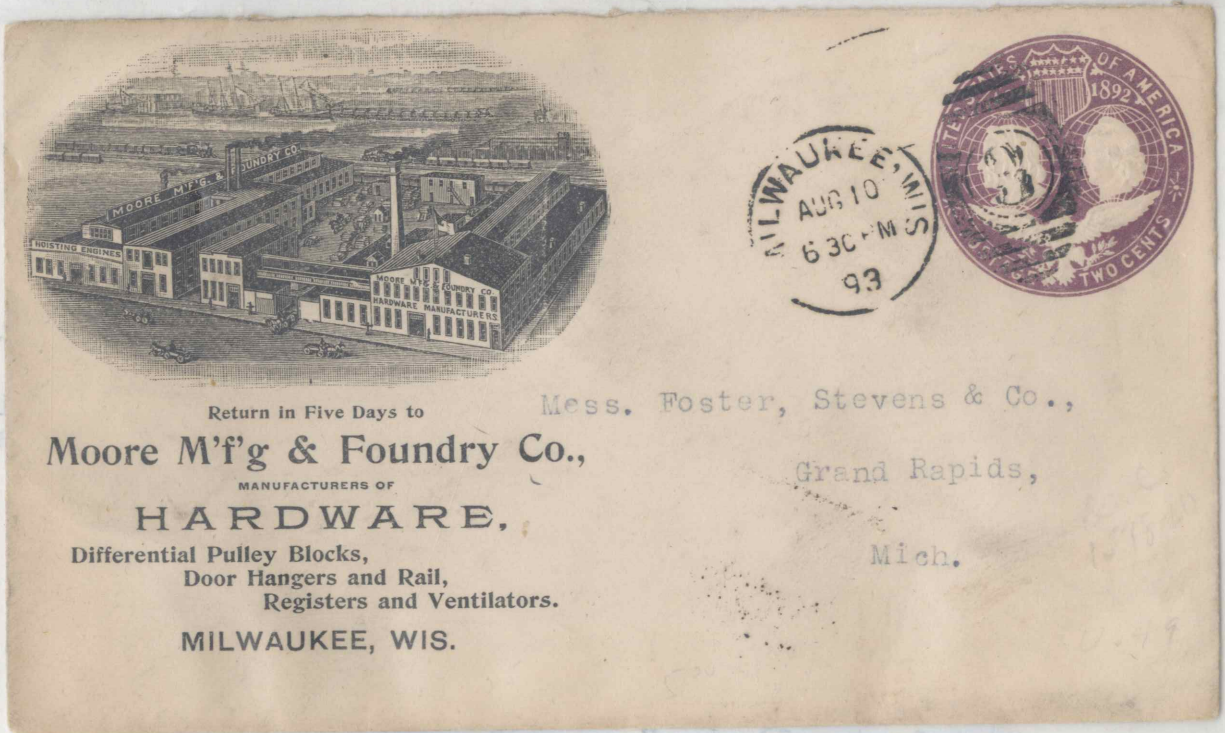
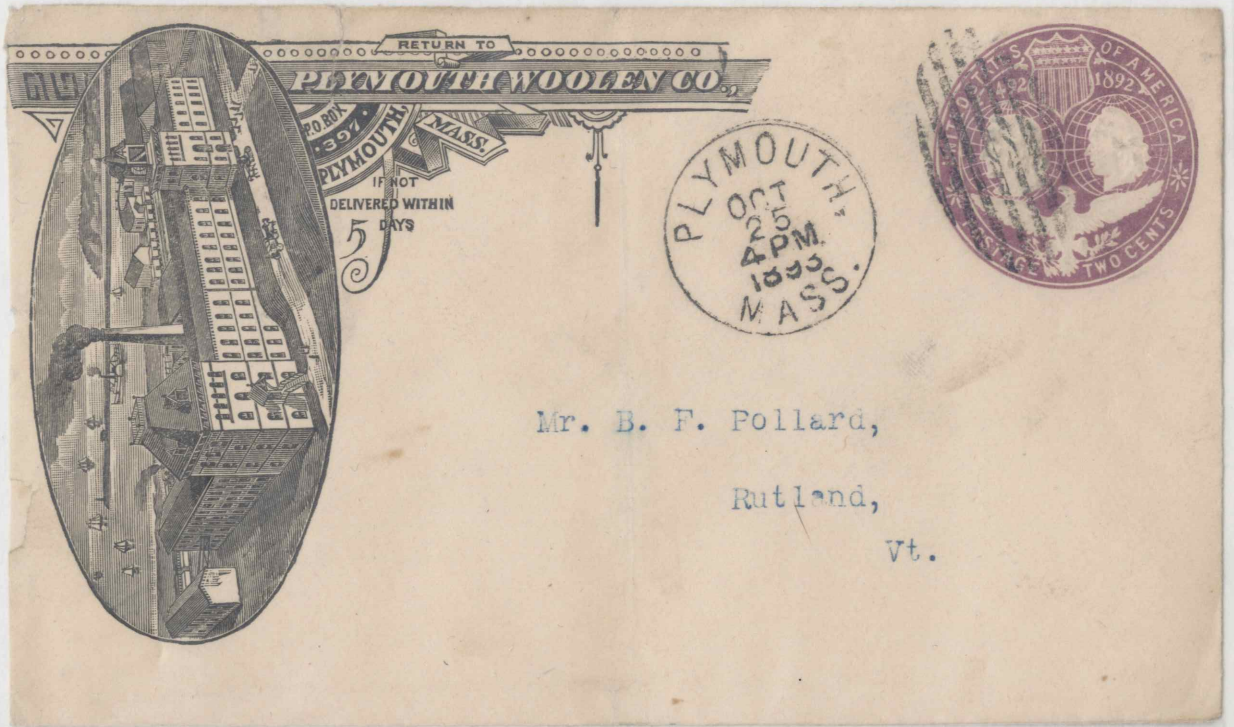
A Stamp Dealer's Letter to India.
Thorp 1600; Size Q; Knife 63; Die 5-B-1



A Stamp Dealer's Letter to Japan.
Thorp 1600; Size Q; Knife 63; Die 5-B-1

Advertising Covers from the Day and Age when
SMOKING SMOKESTACKS were a sign of progress.

YRSHOITATS JATB Thorp 1578; Size Q; Knife 63; Die 2-C-2



Thorp 1578; Size Q; Knife 63; Die 2-C-4

An early United States Stamp Dealer
Thorp 1549; Size P; Knife 62; Die 1A1



Thorp 1595; Size R; Knife 64; Die 5A1
A Stamp Dealer from the "Mid-West" showing Philately
had an early start in the Mid-Section of our Nation.

A Territorial Cover from New Mexico.
Thorp 1563; Size P; Knife 62; Die 2-A-3

Return to WHITTELSEY & JOYS,
EDDY, New Mex.,
If not delivered within 5 days.



The Horton Mfg Co.,
Bristol,
Conn.

Return to.....

TUCSON, Arizona,
If not delivered within 10 days.



F. A. Hardy & Co
46 Madison Str
Chicago
Ill.

Thorp 1574; Size P; Knife 62; Die 2-C-7
A Territorial Cover from Arizona.

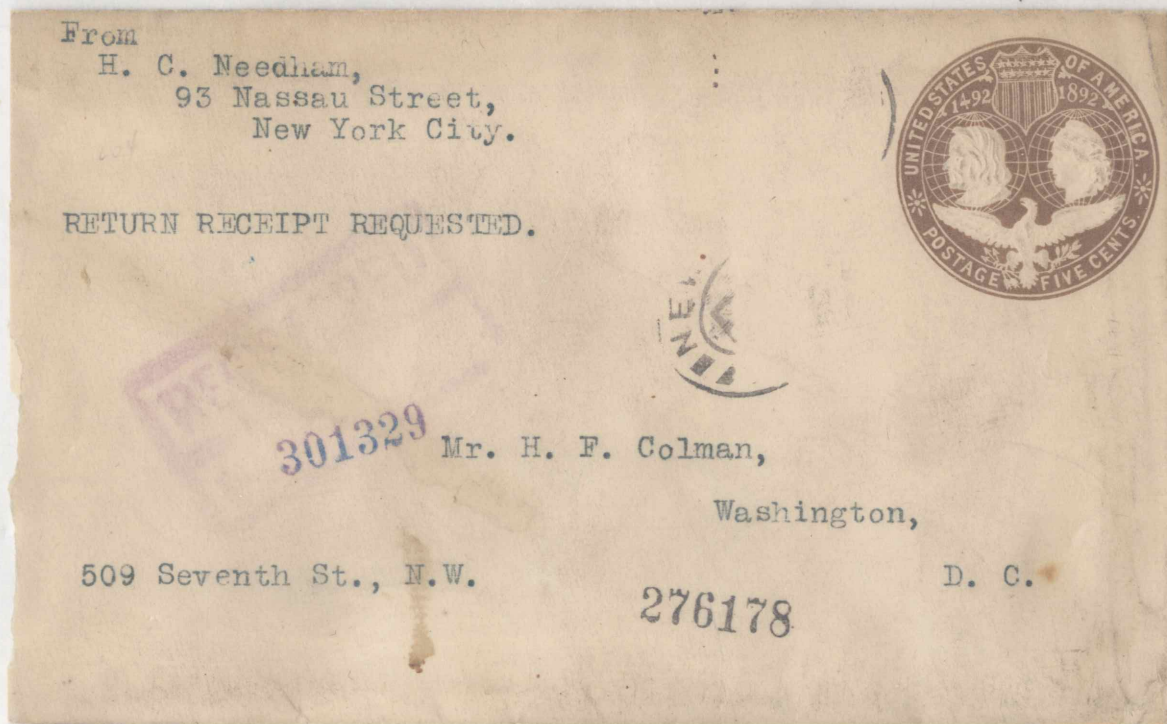
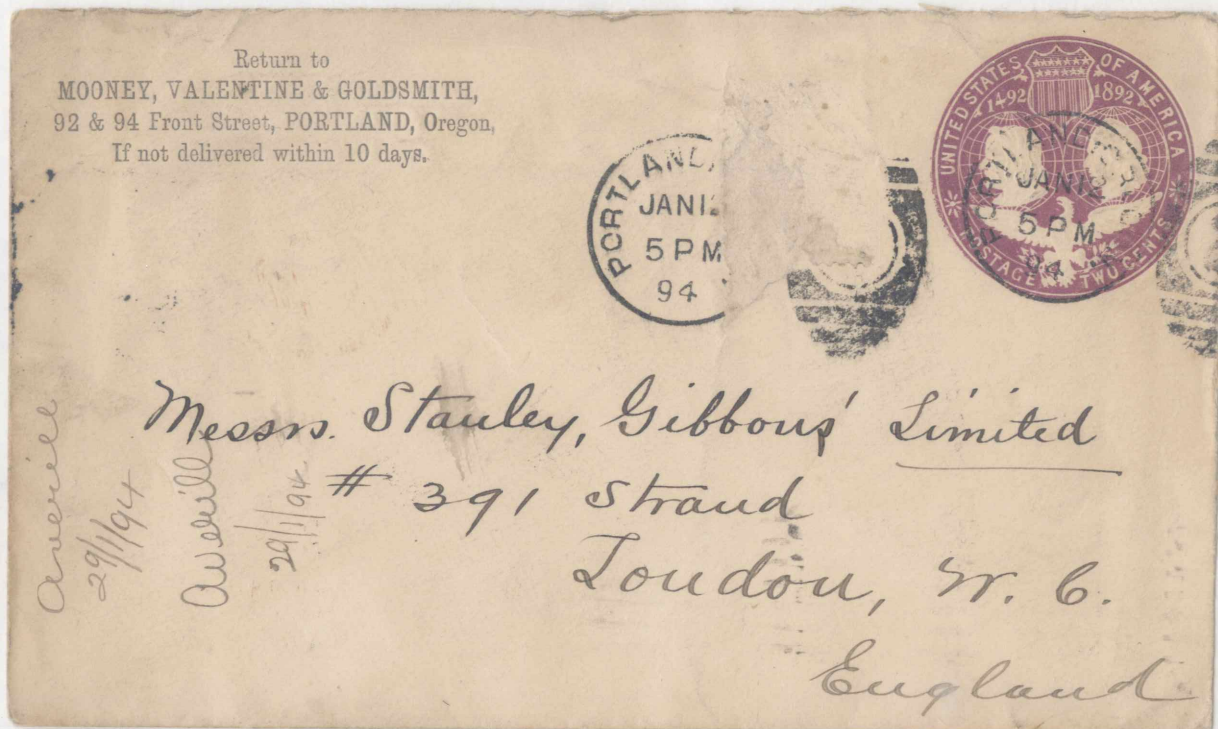
A colorful, different and unusual advertising Cover
with the United States Columbian Postal Stationery.



Thorp 1554; Size Q; Knife 63; Die 1B1

These two "JUNK" covers are shown to emphasize the changing trends in Philately. In the "Gay Nineties" used stamps were worth more "off cover" than "on cover". This led to defacing and "ruining" many covers that would now be called "Premium".

Thorp 1578; Size Q; Knife 63; Die 2-C-4



Thorp 1600; Size Q; Knife 63; Die 5-B-1

An unusual item with improper usage of a United States Columbian Postal Stationery Stamp.



The Stamp from a United States Columbian Postal Stationery envelope was cut-out, carefully trimmed, then glued to another envelope along with a three cent U. S. Columbian adhesive Stamp. This combination was mailed to a German address. Neither the Domestic or Foreign Postal Services noted this improper Stamping procedure.

The Die variety of this Stamp is 2A1 however the envelope size and Thorp number were lost with the trimming.



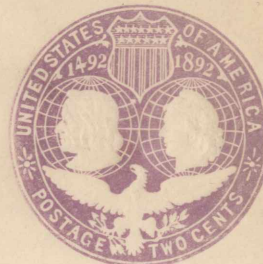
Thorp 1548
Size A
Knife 48
Die 1-A-1



Thorp 1551
Size A
Knife 48
Die 1-B-1



Thorp 1572
Size A
Knife 48
Die 2-C-11



Thorp 1581
Size A
Knife 48
Die 2-D-1

There were four basic Die Varieties, with a total of 31 working Dies used to produce United States Columbian Postal Stationery.

- A. Meridian back of Columbus' head, periods after words cents and/or America, with a total of nine working Dies.
- B. No Meridian back of Columbus' head, periods after words cents and/or America, with a total of four working Dies.
- C. Meridian back of Columbus' head, no periods after words cents and/or America, with a total of sixteen working Dies
- D. No Meridian back of Columbus' head, no periods after words cents and/or America, with a total of two working Dies.

The remainder of this presentation is the featured part of this Exhibit:

DIE VARIETIES AND ENVELOPE SIZES

There are eighty one listed working Die - Envelope Size combinations consisting of: 16 One Cent; 50 Two Cent; 12 Five Cent; and 3 Ten Cent. Each Die Variety has a characteristic that identifies it from all other combinations.

Identity mark for Die 1-A-1 is a colored line cutting into the outer frame line of the Right Globe adjacent to right bottom of the Shield.



Thorp 1548
Size A
Knife 48
Die 1-A-1



Thorp 1549
Size P
Knife 62
Die 1-A-1

Return to COLUMBIA NATIONAL BANK,
CHICAGO, Ill.,
If not delivered within 5 days.

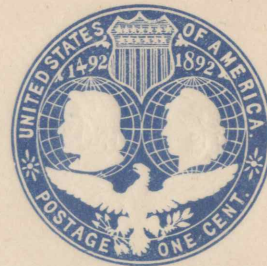


Thorp 1550
Size Q
Knife 63
Die 1-A-1

Identity mark for Die 1-B-1 is a vertical colored line in the left side of the Shield joining with the two regular lines to make a three line bar for the Shield.

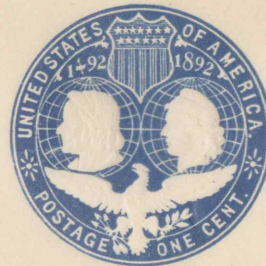


Thorp 1551
Size A
Knife 48
Die 1-B-1



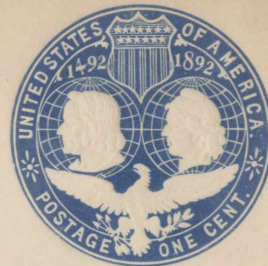
Thorp 1553
Size P
Knife 62
Die 1-B-1

Return to ITHACA TRUST CO.,
Savings Bank Building, ITHACA, N. Y.,
If not delivered within 5 days.



Thorp 1554
Size Q
Knife 63
Die 1-B-1

Thorp 1555; Size N; Knife 48; Die 1-B-1 [J-V-1]

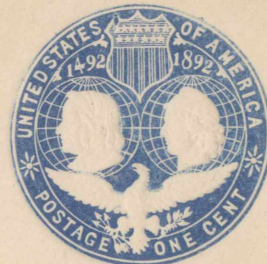
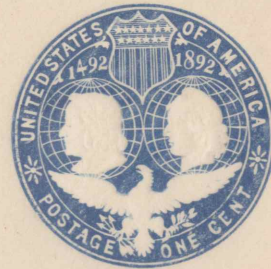


Thorp 1556; Size R; Knife 64; Die 1-B-1

UNITED STATES POSTAL SERVICE

Identity mark for the One Cent Die 1-C-1 is a white line connecting one claw of the Eagle's right talon to inner frame line above "0" of One.

Thorp 1557; Size A; Knife 48; Die 1-C-1



Thorp 1560; Size N; Knife 58; Die 1-C-4

Identity mark for the One Cent Die 1-C-4 is a thin white line extending downward from the center of the junction of the two globes.

Identity mark for the One Cent Die 1-C-2 is a short white dash extending from the right bottom of the Shield downward to right Globe line.

Shield No. 1492: Scott No. 1892: Size N: Knife 63: Die 1-C-2



Thorp 1559
Size Q
Knife 63
Die 1-C-2



Thorp 1560
Size N
Knife 58
Die 1-C-2



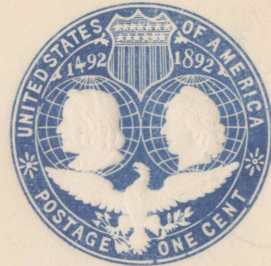
Thorp 1561
Size R
Knife 64
Die 1-C-2

1892
1892
1892

FIELD NO. 1207; SCORE NO. 1379; STAGE 1; KNIFE NO. DIE 1-C-3

Identity mark for the One Cent Die 1-C-3 is a white dash extending diagonally from "D" of "United" to the outer frame line.

Thorp 1560; Size N; Knife 58; Die 1-C-3



Thorp 1561; Size R; Knife 64; Die 1-C-3

UNITED STATES POST OFFICE - WASHINGTON, D.C.

Identity Mark for the Two Cent Die 2-A-1 is an extra curved horizontal line under Columbus' Head just above the Wing.

Thorp 1563; Size P; Knife; Die 2-A-1

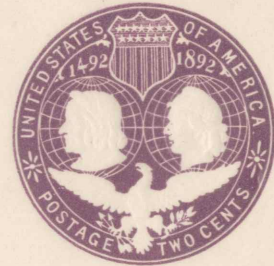
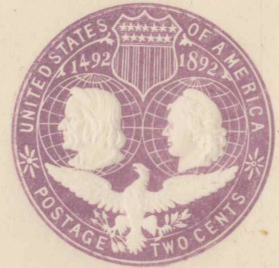
Thorp no. 1563; size P; Knife; Die 2-A-1



Thorp 1566; Size Q; Knife 63; Die 2-A-1

Identity mark for the Two Cent Die 2-A-2 is a straight white dash touching curved horizontal line under Columbus' Head.

Thorp 1566; Size Q; Knife 63; Die 2-A-2



I-A-S 310 ; 30 e Thorp: 1563; 2 Size P; . Knife 62; ; Die 2-A-3 ; Thorp

Identity mark for the Two Cent Die 2-A-3 is a 1/4 inch white dash under "P" of Postage.

Identity Mark for the Two Cent Die 2-A-4 is a thin white line from the inner Frame Line below "D" of "United" to outer left Globe line at second from top horizontal Globe line.

Thorp 1566; Size Q; Knife 63; Die 2-A-4



Thorp 1566; Size Q; Knife 63; Die 2-A-6

Identity for the Two Cent Die 2-A-6 is a small white dash in the letter "D" of United.



The Die 2-A-7 seems to be the most difficult to identify. Identity seems to rest on the way that differs from the rest of the Series A Dies of the two cent Dies.

Thorp 1564
Size H
Knife 59
Die 2-A-7

CHARLES ESTÉ,
WHOLESALE AND RETAIL
LUMBER MERCHANT,
20TH ST., ABOVE YORK ST.,
PHILADELPHIA.

RETURN, IF NOT CALLED FOR IN FIVE DAYS.



Mr. R. C. Lippincott,

925 Chestnut St.,

Phila.

Thorp 1566
Size Q
Knife 63
Die 2-A-7

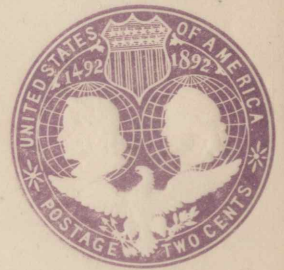


Identity mark for the Two Cent 2-A-5 Die is five vertical white lines between the right wing of the Eagle and the feathers of it's right leg.

Thorp 1565
Size I
Knife 61
Die 2-A-5

dash in the letter

One Envelope also
which is shown



Return to.....
ALVIN, Brazoria Co., Texas,
If not delivered within 10 days.

Thorp 1562
Size A
Knife 48
Die 2-A-5



Thorp 1565

Size I

Knife 61

Die 2-A-7

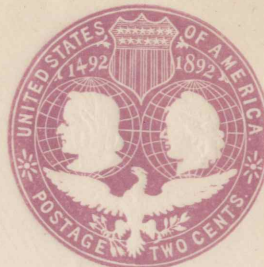
Identity mark for the Two Cent Die 2-B-1 is a Vertical white dash placed diagonally between the third and fourth Meririans, from the left, over Columbus' head to form a V.

Thorp 1570; Size Q; Knife 63; Die 2-D-1



Identity mark for the Two Cent Die 2-B-2 is an extra Horizontal white dash under and touching curved Horizontal line under Isabella's head.

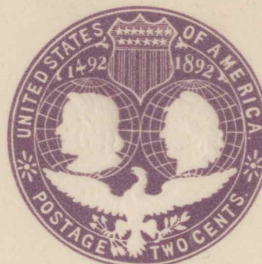
UNITED STATES 1903 COLUMBIAN ISSUE OF POSTAL STATIONERY



Thorp 1569
Size P
Knife 62
Die 2-B-2



Thorp 1570
Size Q
Knife 63
Die 2-B-2



Thorp 1571
Size R
Knife 64
Die 2-B-2

ENCL NO. 1221: SCOFF NO. 1378: STS: H: KUTLE QY: HTE 3-B-3
Identity mark for the Two Cent Die 2-C-1 is, more vertical lines
under Columbus' head than any of the rest of Die C Varieties.

Thorp 1574; Size P; Knife 62; Die 2-C-1



Thorp 1579; Size N; Knife 58; Die 2-C-1



Identity mark for the
Two Cent Die 2-C-2 is
a colored dash cutting
into inner frame line
at tip of left wing.

Thorp 1575
Size G
Knife 51
Die 2-C-2



Thorp 1578
Size Q
Knife 63
Die 2-C-2



Identity mark for the
Two Cent Die 2-C-2 is
a colored dash cutting
into inner frame line
at tip of left wing.

Identity mark for
dash cutting into
envelope and
the following
Thorp 1575
Size G
Knife 51
Die 2-C-2



Thorp 1578
Size Q
Knife 63
Die 2-C-2

Thorp 1576
Size H
Knife 59
Die 2 C 2



Stephen A. Marin
U.S. Mission Agent
Des Moines Iowa

Return to *to M. H. K.*
DE WITT, Iowa,
If not delivered within 10 days.

A VERY RARE ITEM
ONLY SIX COPIES
KNOWN

Identity mark for the Two Cent Die 2-C-3 is a white horizontal dash between outer frame line and "O" of "OF".

Thorp 1574; Size P; Knife 62; Die 2-C-3

Return to

WOOSTER, Ohio,
If not delivered within 10 days.



Return to
FIRST NATIONAL BANK,
LOGANSPORT, Ind.,
If not delivered within 10 days.



*Keller Rental Co.
Foot Wayne Ind.*

Thorp 1578; Size Q; Knife 63; Die 2-C-3



Thorp 1579, Size N, Knife 58, Die 2 C 3



UNITED STATES

Identify man
dash between
Four envelope
and H. Envel
are on the

Thorp 1576

Size H

Knife 59

Die 2-C-3

2-C-3

Thorp No. 1576



Identity mark for the Two Cent Die 2-C-4 is a short white line from left Globe frame line extending outward to point of Shield.

Thorp 1576
Size H
Knife 59
Die 2-C-4

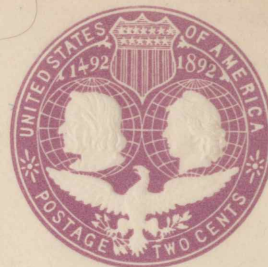
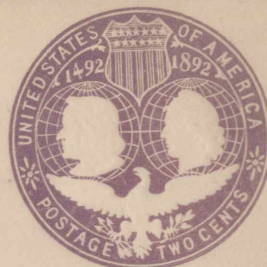
JOHN F. BRENNAN,
ASSIGNEE,
No. 45 Warburton Avenue,
YONKERS, N.Y.



Thorp 1578
Size Q
Knife 63
Die 2-C-4

Identity mark for the Two Cent Die 2-C-5 is a colored dash in the letter "A" of "Postage" giving the impression of a double line.

Thorp 1578; Size Q; Knife 63; Die 2-C-5



Thorp 1580; Size R; Knife 64; Die 2-C-5



TYPE 23: Die S-C-2

Thorp 1577

Size I

Knife 61

Die 2-C-5

FOR WITH BUREAU
Die 2-C-5

Die 2-C-5

TYPE 23: Die S-C-2

Identity mark for the Two Cent Die 2-C-6 is a tongue in Eagles mouth, however overinking will sometimes obscure it.

Thorp 1578; Size Q; Knife 63; Die 2-C-6



Thorp 1574; Size P; Knife 62; Die 2-C-7

Identity mark for the Two Cent Die 2-C-7; is a straight white dash right of right feather of arrow near tail of Eagle.

Identity mark for the Two Cent Die 2-C-8 is a white dot
under ornament at "O" of "OF" and over "8" of "1892".



Thorp 1574; Size P; Knife 62; Die 2-C-8

IDENTITY MARK FOR THE TWO CENT DIE 2-C-8 IS A WHITE DOT

UNDER ORNAMENT AT "O" OF "OF" AND OVER "8" OF "1892".

OF "OF".

WHITE DOT UNDER ORNAMENT AT "O" OF "OF" AND OVER "8" OF "1892".

IDENTITY MARK FOR THE TWO CENT DIE 2-C-8 IS A WHITE DOT

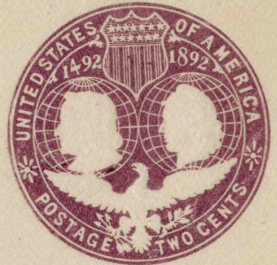
UNITED STATES 1893 COLUMBIAN ISSUE OF POSTAGE STATIONERY



*R. Patrick & Co. Bankers,
Pittsburgh,
Pa.*

Identity mark for the
Two Cent Die 2-C-9 is
three lines in left
vertical bar of the
Shield.

Thorp 1577.
Size I
Knife 61
Die 2-C-9



Messrs. MUNN & CO.,

No. 361 BROADWAY,

NEW YORK,

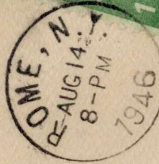
N. Y.

Return to ALEXANDER & CO.,
MONONGAHELA, Washington Co., Pa.,
If not delivered within 5 days.

Thorp 1572
Size A
Knife 48
Die 2-C-9

32

Thorp 1576
Size H
Knife 59
Die 2-C-9



*H. E. Deats
2 1/2 N. Wash. St.
Rome, N. J.*

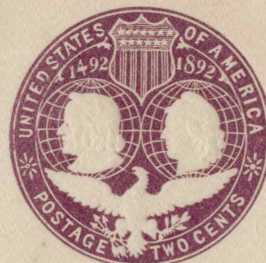
If not delivered in three days
return to H. E. DEATS,
FLEMINGTON, N. J.

Mr. S. Schachne,
Masonic Temple Bldg.,
Chillicothe,
O.

Thorp 1575
Size G
Knife 51
Die 2-C-9

Identity mark for the Two Cent Die 2-C-10 is a tapered white line extending from the left globe frame lint outward to the Eagle's beak, a sort of "spur".

Thorp 1572; Size A; Knife 48; Die 2-C-10



Thorp 1580; Size R; Knife 64; Die 2-C-10



Thorp 1575

Size G

Knife 51

Die 2-C-10

Die 5-C-2

Knife 22

Size H

Score no. 1272

Thorp no. 1222

UNITED STATES
POSTAGE
1892
TWO CENTS
OF AMERICA

Identity mark for the Two Cent Die 2-C-11 is a colored vertical dash in inner frame line where left Globe Touches frame line at "U" of United.

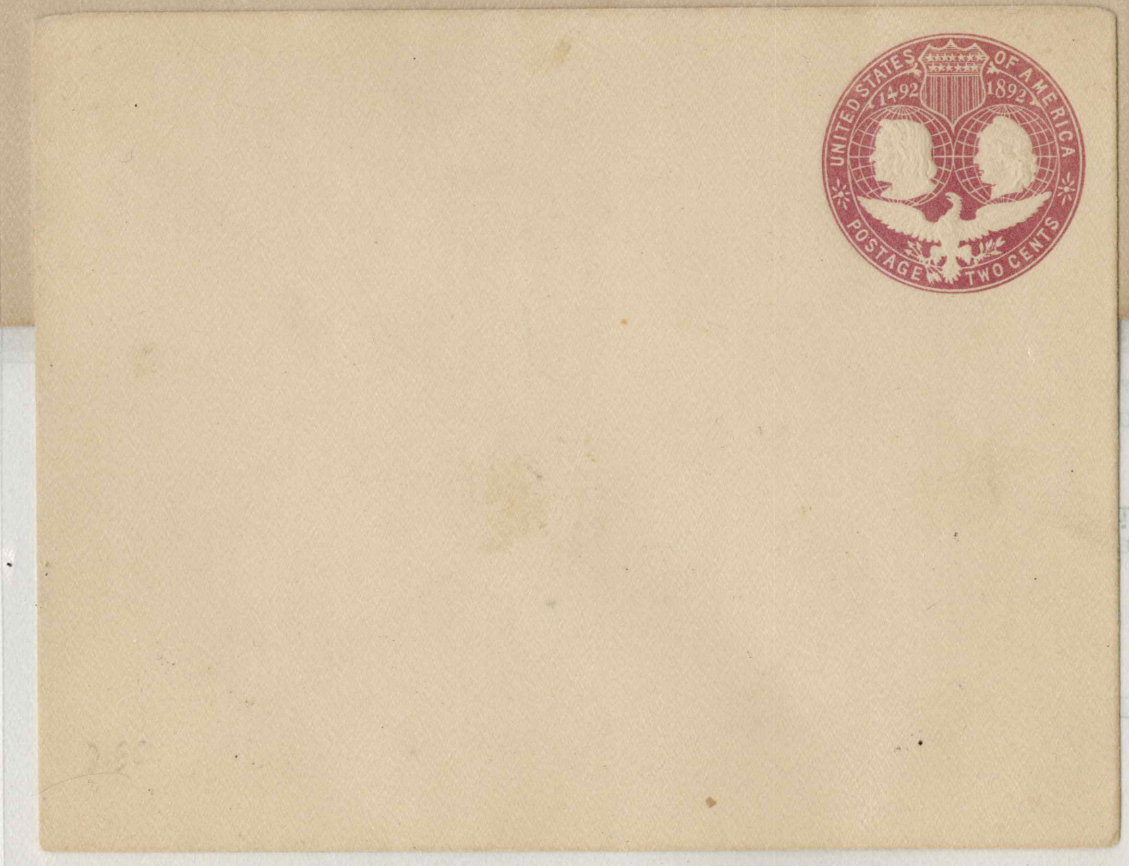
Die 2-C-11



Thorp 1572
Size A
Knife 48
Die 2-C-11



Thorp 1578
Size Q
Knife 63
Die 2-C-11



Thorp 1580
Size R
Knife 64
Die 2-C-11

Die 2-C-11

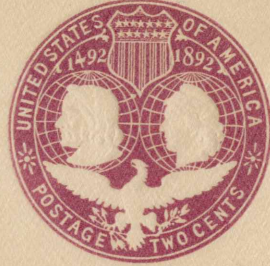
Die 2-C-11

Die 2-C-11

Identity mark for the Two Cent Die 2-D-1 is a white lump or blunt spur on the left Globe frame line adjacent to the pointed tip of the Shield.

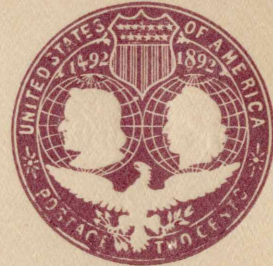
Thorp 1581; Size A; Knife 48; Die 2-D-1

Ballot for Trustee.



Treasurer Cornell University,

ITHACA, N. Y.



Thorp 1582; Size P; Knife 62; Die 2-D-1

Identity Mark for the
Two Cent Die 2-D-2
is, left inner Frame
line is not contin-
uous between shaft
of arrow and left
side of Eagle's
Tail.



Thorp 1583

Size G

Knife 51

Die 2-D-2

3541085A
1983 CB 10817
1983 COPPER
DATED 35482

Thorp 1584
Size H
Knife 59
Die 2-D-1

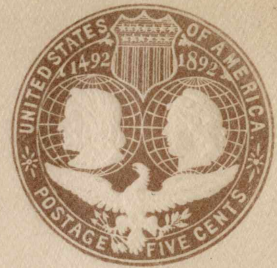


*If not delivered in Five Days return to
H. E. DEATS,
FLEMINGTON, NEW JERSEY.*



Identity mark for the
Five Cent Die 5-A-1 is
a small white dash ext-
ending in a little from
the inner frame line
over "P" and "O" of
Postage.

Thorp 1591
Size G
Knife 51
Die 5-A-1



Thorp 1590
Size P
Knife 62
Die 5-A-1



Thorp 1592

Size H

Knife 59

Die 5-A-1



Thorp 1594

Size Q

Knife 63

Die 5-A-1



Thorp 1593
Size I
Knife 61
Die 5-A-1



Thorp 1595
Size R
Knife 64
Die 5-A-1

Identity mark for the Five Cent Die 5-B-1 is a horizontal curved line does not connect third meridian line from right to lower curl of Liberty's hair.

Thorp 1596; Size P; Knife 62; Die 5-B-1



Thorp 1601; Size R; Knife; Die 5-B-1

Thorp 1598
Size H
Knife 59
Die 5-B-1

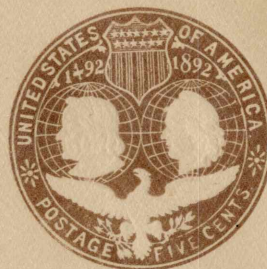


Thorp 1597
Size G
Knife 51
Die 5-B-1

Thorp No. 1598; See



Thorp 1599
Size I
Knife 61
Die 5-B-1



Thorp 1600
Size Q
Knife 63
Die 5-B-1



Identity mark for the
Ten Cent Die 10-C-1 is
a short white dash ext-
ending from left to
right Globe frame line,
just under tip or point
of Shield.

Thorp 1611
Size H
Knife 59
Die 10-C-1



Thorp 1610
Size Q
Knife 63
Die 10-C-1



Thorp 1612
Size I
Knife 61
Die 10-C-1