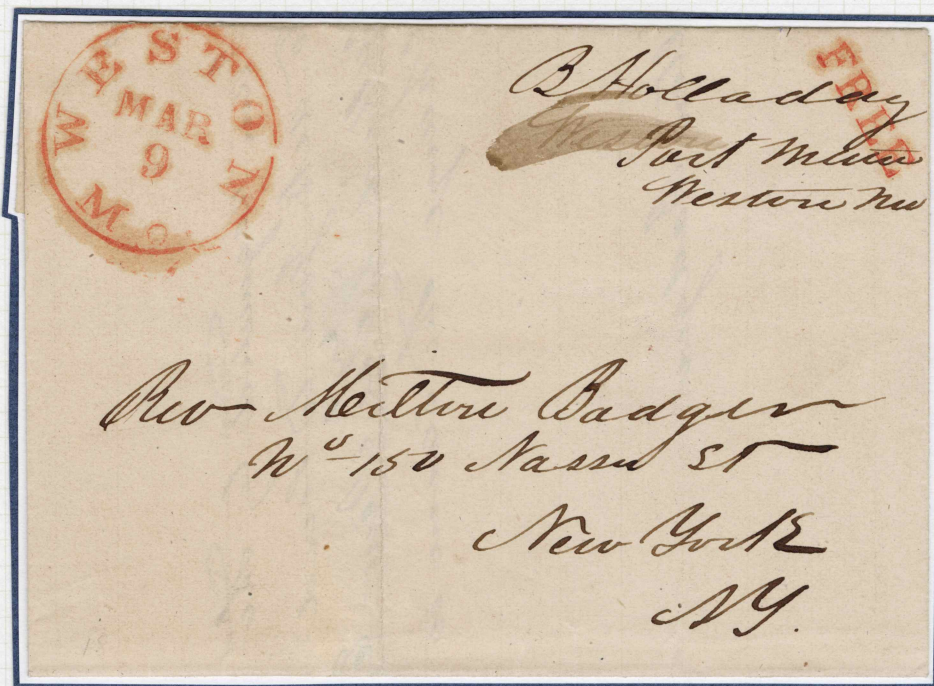


BEN HOLLADAY  
THE STAGECOACH KING  
1844



Ben Holladay was Weston, Missouri's most prominent citizen. He began his career by keeping a log tavern in 1839. From 1841 to 1845 he served as postmaster. Holladay's fortune was based on a contract he secured to supply Stephen W. Kearny's expedition to Santa Fe during the Mexican War. After the war he began freighting over the California Trail. He was a major creditor of Russell, Majors & Waddell. When that firm went bankrupt he acquired it, together with their freighting business and mail routes to Denver and Salt Lake City. In later years the Holladay Overland Stage Line extended branches to California and Oregon.

This cover is the only recorded example of his free frank as postmaster of Weston.



B Holladay  
~~New York~~ Port Moresby  
New York

Rev Melville Badger  
No 150 Nassau St  
New York  
NY.

2537

Dr. Edmund Wright  
No. 8. 1834  
N. York

PAID  
2537

O.C. =

Woodrow N. 3

5-47/2/2

349

WSP