

AGBABIS 1-3 ARAADAB 4-5 ARIS 6 AROAB 7 AUB 8 AUS 9-11



15 4 14



BARBY 12 BERGLAND 13 BERSEBA 14 BETHANIEN 15 BOGENFELS 16



BRACKWASSER 1-8 BRACKWATER 19

BRACKWASSER 7-18 C BRACKWATER 19



18



19



18



22



23



24



10 10 14



26-6-14



13-3-14







19 10 14



28 7 14



33 11





9615

24415



7



KUBAS ON REAR.



51



53

76V MSC
Rötlich ochre







9 1 14



4 5 13



18 5 14





KOSACK



7



10



11

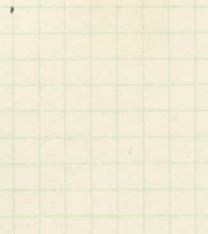
11

12

12



M 28 y d



u



KEETMANSHOOP



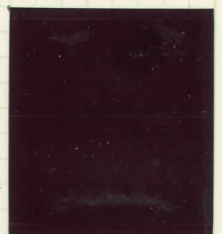


70



70

70



M 284-b
5.8.14



Khanrivier

73



11 6 14



M 28 Y



5 2 14



12 3 14



KUBIS USED IN KUB 14-3-05



KUB 78

KUBIS 81-2

KUIS 83-4 ↓







Reserve 11



Reserve 13



Reserve 12







a



19714



3714

30714





24.1.14

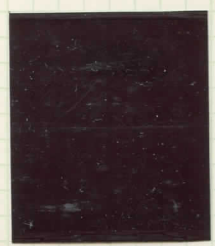


25.6.14



Reverse (Bothe)





32ab





76

24-2-04

101





15514



29-9-14



2.4.14

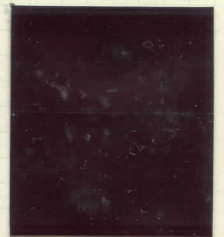


20-1-15



(106) 4-6-15 ?

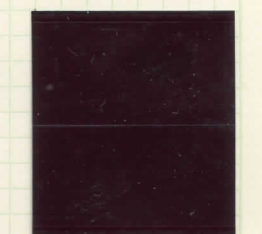
107







117 11 190



118



113 40

124

OTJIMBINGUE 120-1

OTJIWARONGO 122-3-4





122

123



125



20 14



W



31-7-05
131



133 52



136 I



24.1.06





137 ?



inverted 8



(97)



(97)



(99)



(97)



(97)



(97)



7b



7b



7

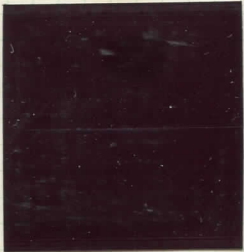


7a



7a





11

12

12



12

12

12

12



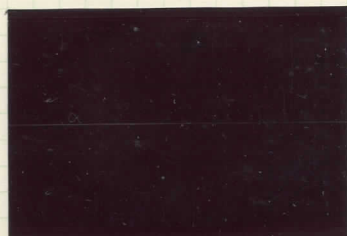
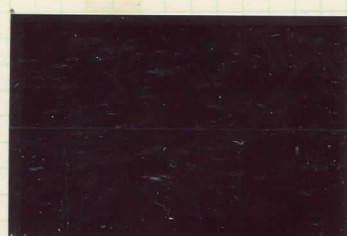


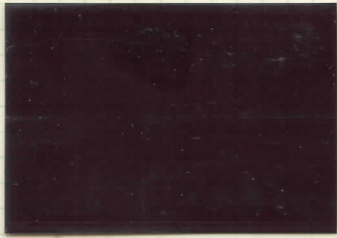


26319











14 5-14 M132A5 34





9-7-14





USA KOS 151-2 WALDAU 153-4-5 UKAMAS 150 WATERBERG 159 160 161 162









a



a

a



a

a





167 b



Intact Bridge 21-1-06



white bridge



17214





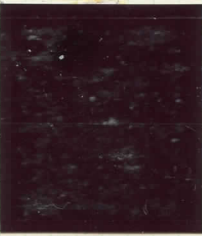
20 2 14



15 2 14



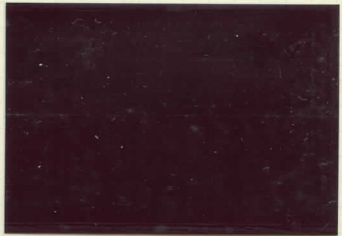
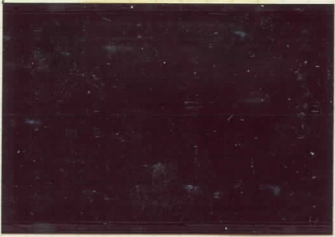
10 1 14



10 1 14

13 M 28 Y

M 28 Y 5-14

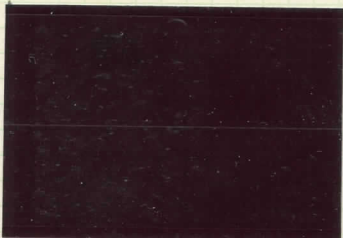


15 10 14



147 32Ab "b"

169 20 "c"



21 5 14 AUSTELLUNG-170

168-170 WINDHUK



4 6 14



3 7 14



2 2 14



3 0 5 14



2 4 5 14



5



5



6



6





Fp2



Fp4



SP2



SP4



Fp3



FELDPOST HERERO Fp1



Fp1



BRITISH CANCELS

GERMAN CANCELS



M 287



PONAPE KAROLINEN 76



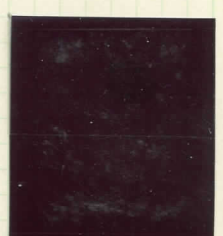
FINOW KANAL





76



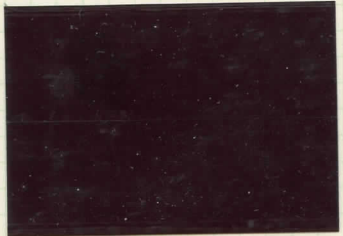


M1287



M1287







10.3.14



28.5.14



5.5.14



14.6.14



19.1.14



8.4.14



AKONO LINGA 3

BAMENDA 5



50



Violet



9.3.14



3.4.14



5.3.14



BIBUNDI 8-9

BIPINDIHOFOIO

BONAMBASI 12



125-14



6.2.14

21.4.14

20.7.14

7614



7 12 00 ✓



189 00 ✓



7 2 01 ✓



2 1 01



7 2 01 ✓



BUFA (Kamerun)



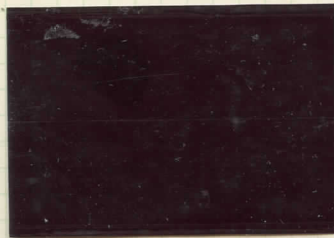






22-7-14

£1 12 10



20.4.14



1a



21





BOTH



"Reserve 6-5-09

INVERTED R



254





8.7.15



27-7

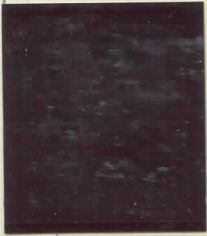


8 6 14



"b" #21

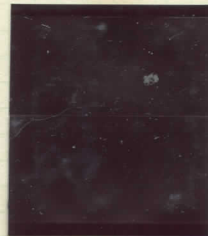


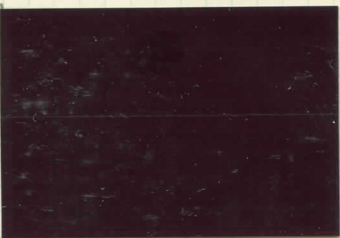
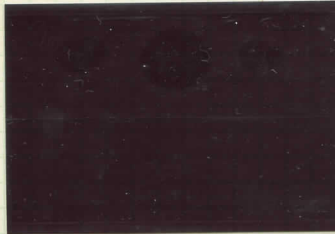
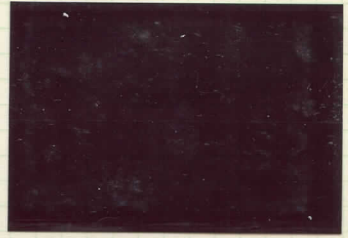
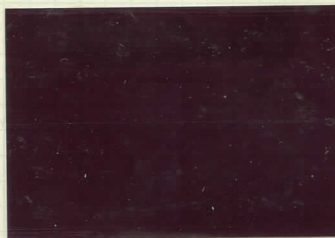
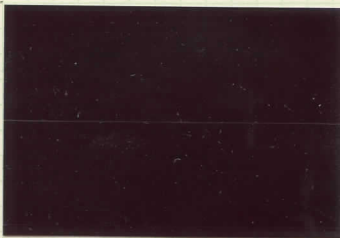
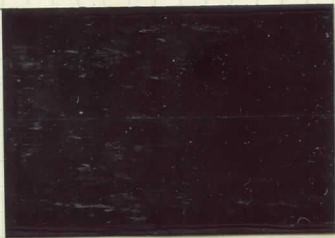
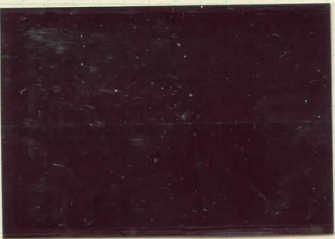
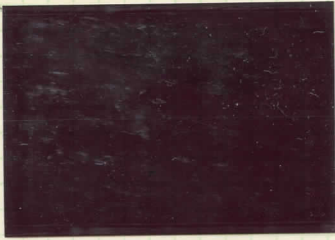


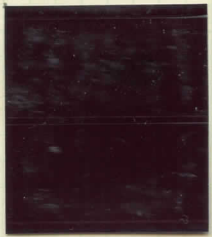
20 6 14



6 5 14







25514 23

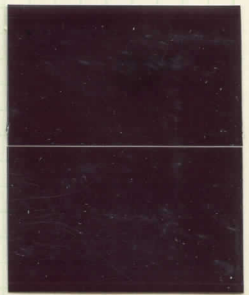
621 23



Freimarken
und Aufgabestempel.
Application des timbres-poste
ic.



7.6.14



24



Blue



24

Blue



7714

7714



4614

6514



5514

14



EDEA 25 FONTEI DORF 26 GARUA 27 GROSS-BATANGA 28 (RARE) KELEMBU 29 (RARE)



8.10.1923





6.2.14

22.7.14



8.6.14



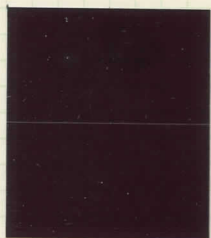
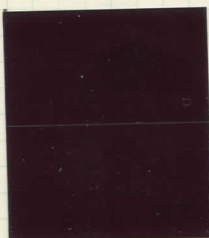
7-8-12



11 11 14



date omitted (1889)





98



1a



1b



98



1a



1b



98



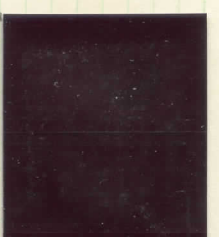
97





310787

31098



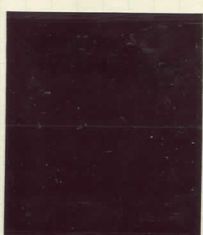
98

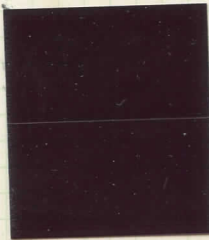
KAMERUN 35 LATER DUALA





15







RICHTER 15614 25





Blau

27/14



92/14



24/14

6.1.14



22.3.17



Richter



durot 8





20



iii.
Applic
et



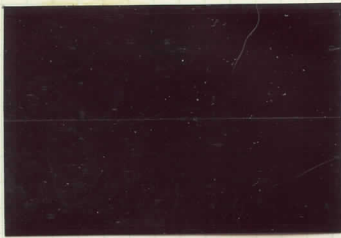
OSSIDINGI



7



23.4.14



20514





K-60







24514

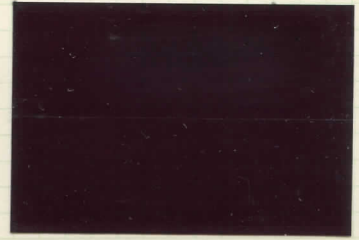


9514

16514

8514

24614 23





inverted 8



DUALA BAHNPOST 15





VICTORIA



NKONG SAMBA



Bare?

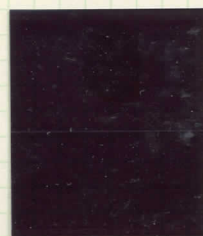


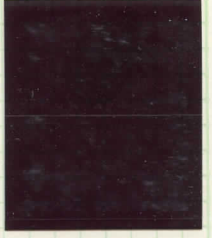
Buca



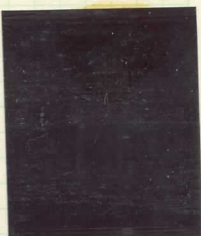
Duala or Wibi



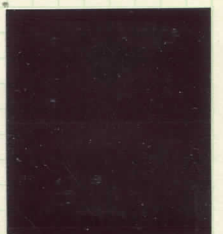
















65a L

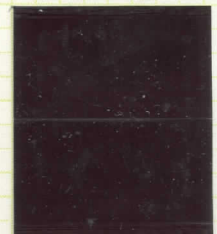
AGBELUVHOE 1

AGOME PALIME 2



21







4.5.14

21.3.14

22

6.5.14

22

AGOME PALIME 2

AGU3

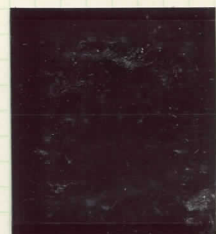
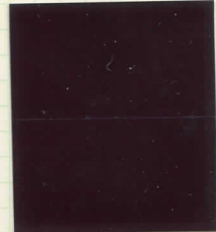
ASSAHUN 5



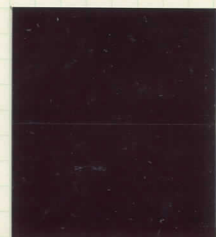
↑SP



T

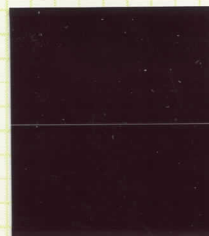
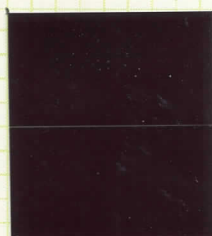


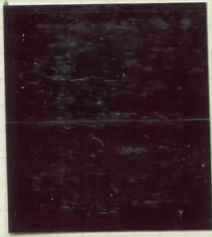
21 3 14



24 2 19







22



21



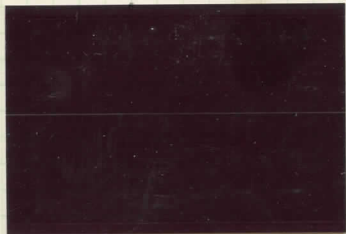
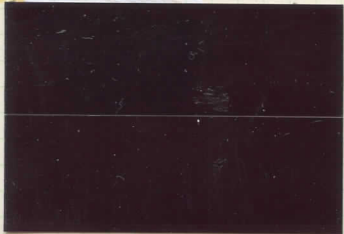
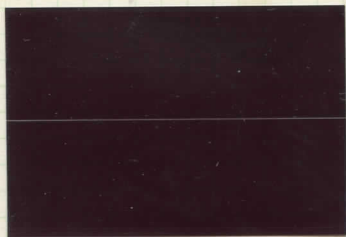
21



21



21





2514



2514



22414



21



21



22



8214

22



73



Dothe



1



1b



1b



Var. missing P in 7060



1a

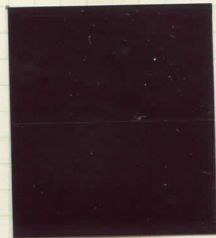
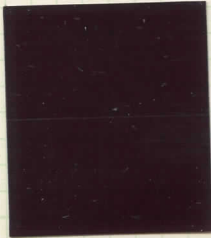


1a



1a

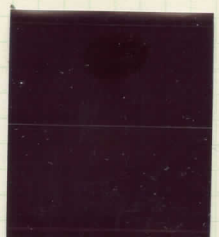


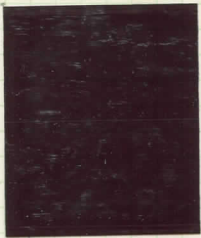


late use 26-9-01



KLEIN POPO II LATER ANECHO





1

1

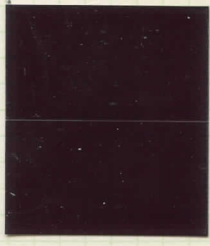
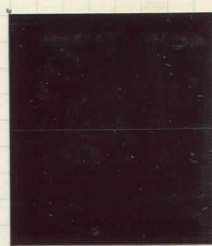
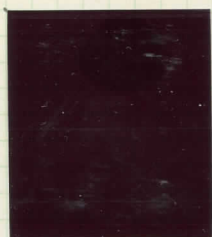
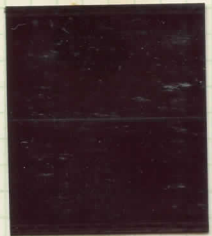
1a

1b



1a









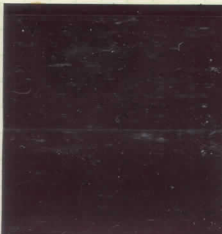
BO THE

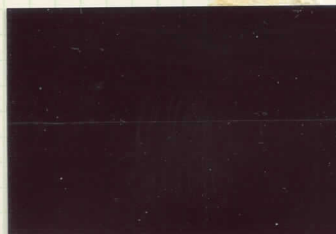
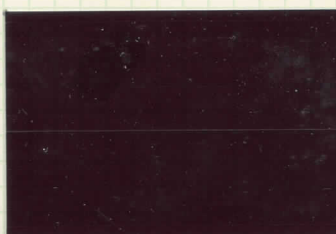
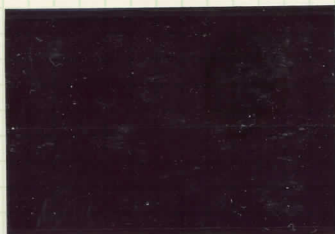


BO THE

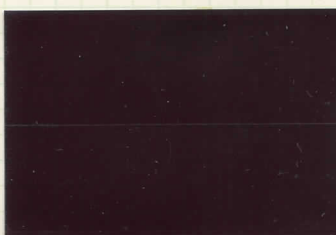


BOHE

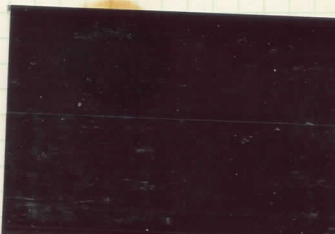




14



15



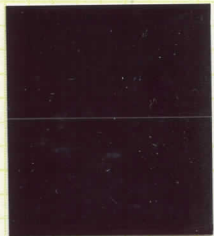
24-7-14

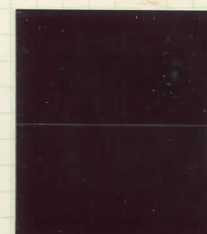
16(a)



23 2 19







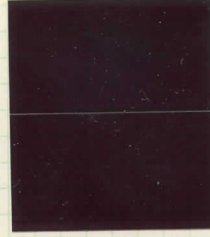
Togo 15-16

KPANDU 12-13 (RARE)

NOEPÉ 17



17-4-14



874 22

25 3 14 22

20-7-14 (10)

374 (10)



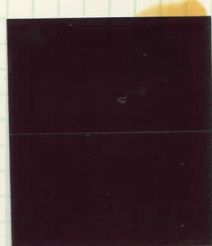
(a) 13







30 5 14



24 V

VIOLET

VIOLET



25 W



25 W



24 V

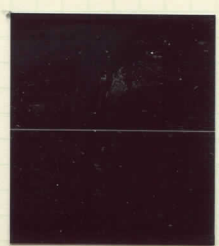


24 V

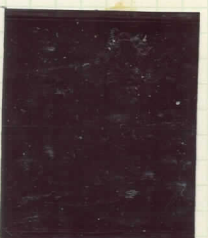


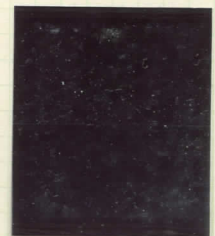
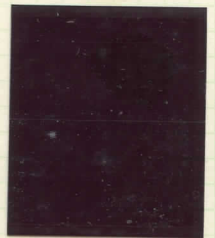
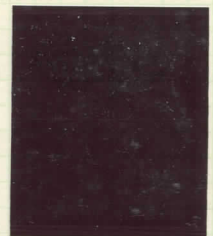
25 W

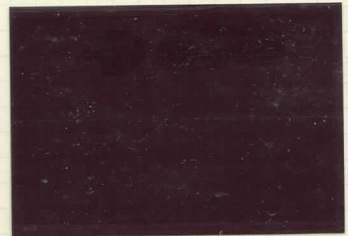
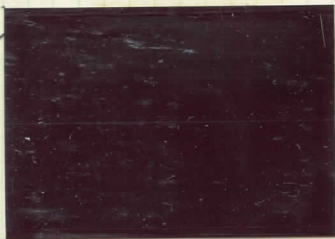
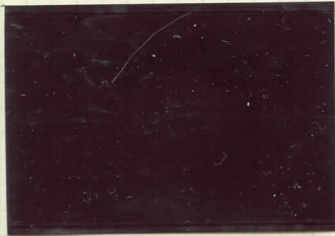
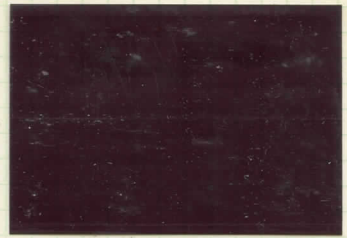
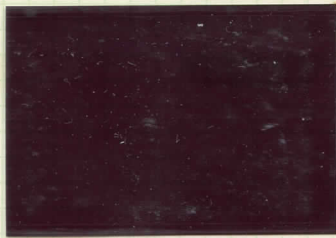
- SEE POST

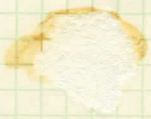


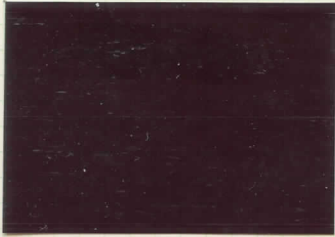
VSE 9













STATION



11746 EX





\$250 each



\$275 each



46b 46
46 46 *missung'o*



47a



47a
46-1



Th



51a C



Th





First Day Cancel



First Day Cancel





dark paper



Broken 0



156

154

155



atank same





75

L





L



L

180

L