



24-12-00



TT

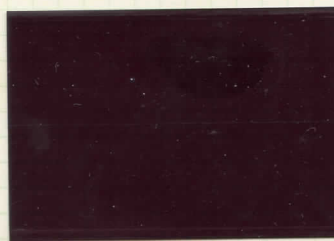
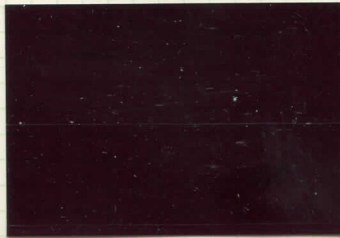




BEIRUT 1-2 (ALSO 1 OR 2)











3



3



4



4



4



3



4



6a



6a





CONSTANTINOPEL 9







36c 8



6a





Thin Dark green 1st

Rose Thin 1st Printing

12a



12a

12a









ROSE

ROSE Thin Paper



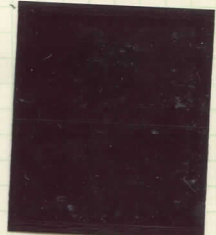
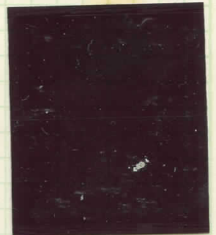
Thin Paper

















10



23



24B



29



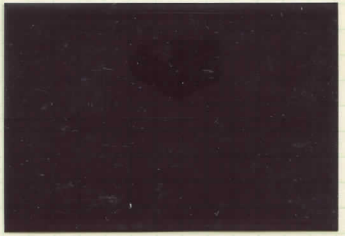
11



Type A



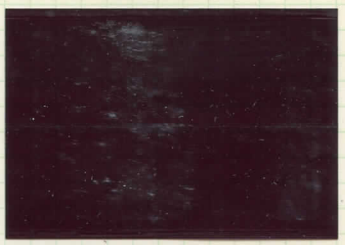
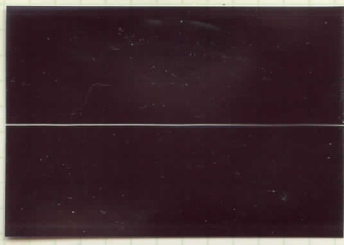
12



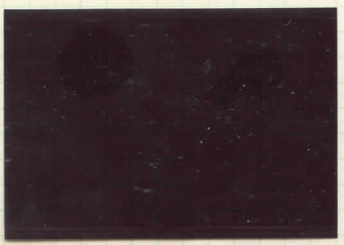
30







243





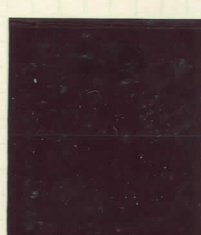
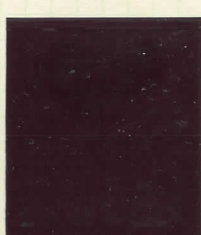
CONSTANTINOPEL 10 OR 13



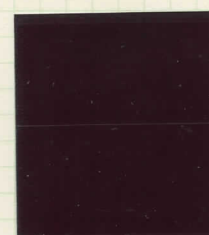




*Dr Blue*













CONSTANTINOPLE 11-13















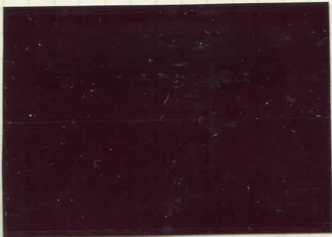




23



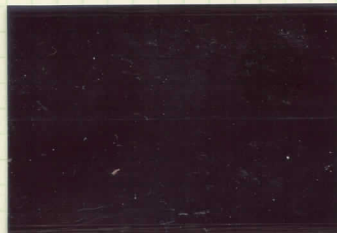
29



40



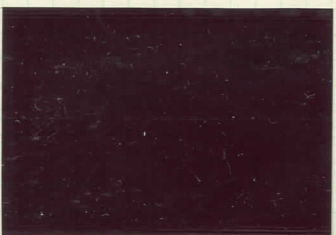




42



52



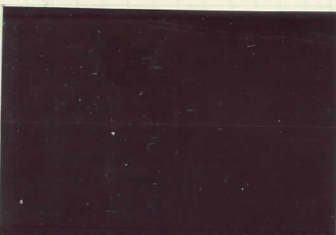
53

54



39

40







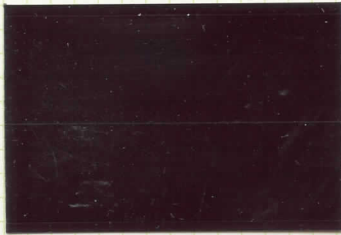








304 pe A



16



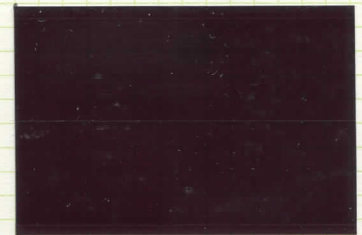
16 53



16



16







17



17



17



18



23



24d

Bothe



17



17



18 53



19



19



17 53



19



19



20







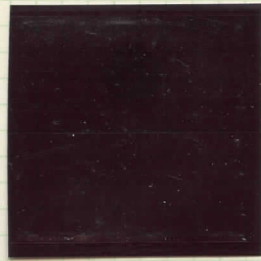


17.





19



19



20



20



20



19









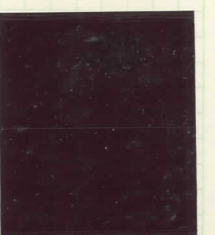
SMYRNA 21



37f















23



25

24

24



SMYRNA 21 or 22 or 23 not absolutely identified







28 Type A



23-42



21

22

23



TURKEY USED





TURKEY (UNUSED)





TURKEY (UNUSED)

