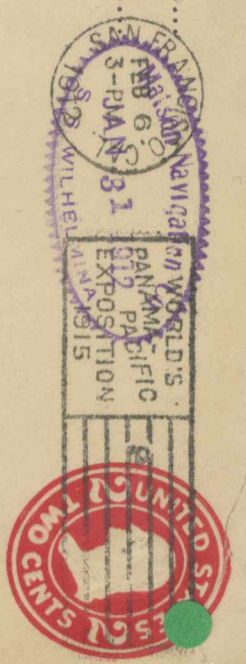


15
300-

Miss Gertrude Barragan
1368 Gayland St
Helenes Ave.

After.....days, return to
HONOLULU, HAWAII.



(THIS SIDE OF CARD IS FOR ADDRESS ONLY)

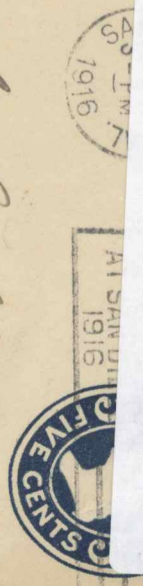
Mrs. M. M. Shamer.
Los Gatos
Cal.



CENSOR.

M.D.
W. Pfeiffer
10 days, return to
KFEILD & CO., LTD.,
P.O. Box 248,
HONOLULU, HAWAII.

Miss Mary
H. Kiefer
Hamburg 21
Chicago 45



U418 (Honolulu, Hawaii) paquebot usage mailed from
San Francisco, CA to Germany 1916
"Matson Navigation Co SS Lurline" handstamp &
censor tape
FAX \$150

ref. 15/11/16 Hamburg. 19/11/16

13
200-

trip cable London Hawaii
Miss H. E. G. Davis
of Mrs. George H. Mead
1537 Dearbitch St.
Chicago
Ill.



W. S. RAY MANUFACTURING CO.,
220 Market Street,
San Francisco, California.



14
For Post St.
Mr. Capital Terminal Bldg
San Francisco
Warren U.S.A.



14
300-

HONOLULU, T. H.

Ernest Bernick



23
200-

Miss W. S. A. Castle
5536 Archerden Ave
Chicago - Illinois



1917

225-

MATSON LINE TO
US (PROBABLY HAWAII)
TIVEN ETPO CONCCL

S. MATSON
SAN FRANCISCO
JAN 19
8-AM
1915
MATSON NAVIGATION CO.

WORLD
PANAMA-
PACIFIC
EXPOSITION
1915



BLAKE, MOFFITT & TOWNE,
37 - 45 First St.,
San Francisco,
Calif.