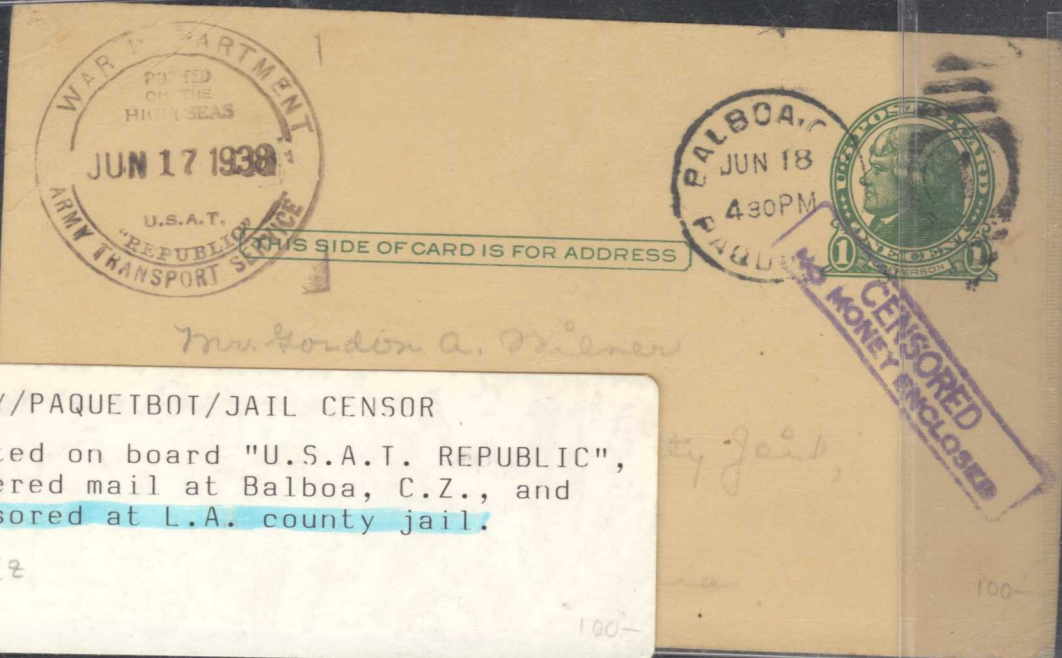
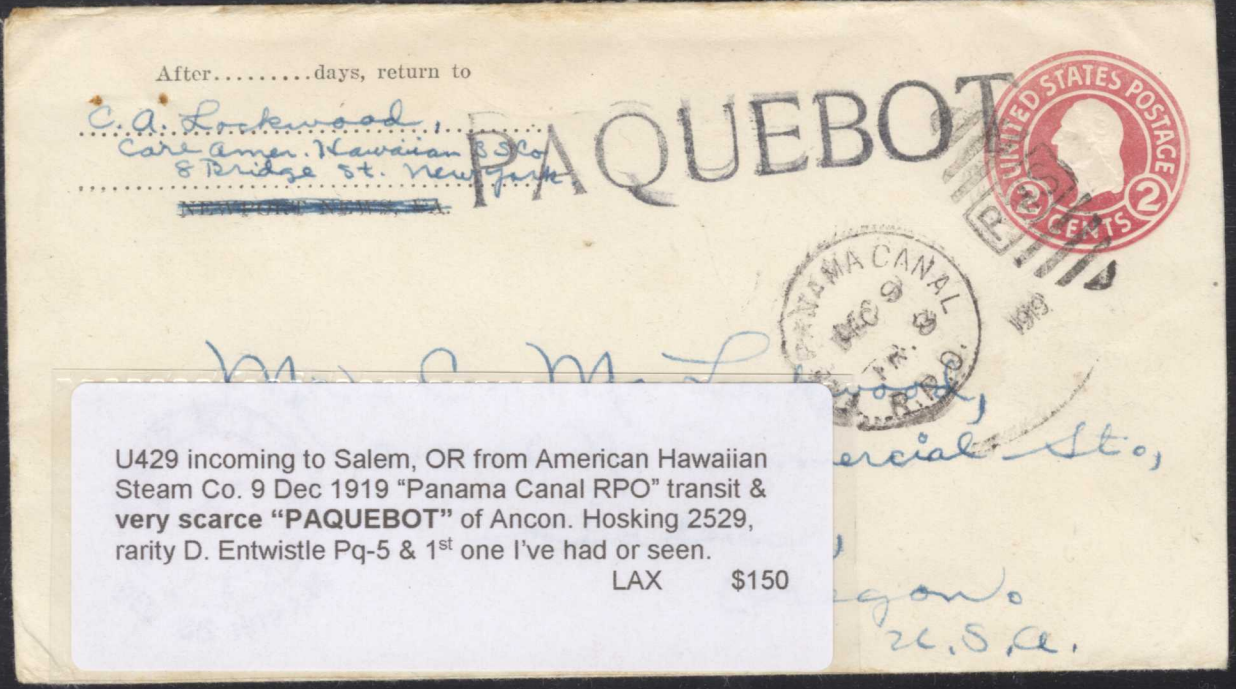
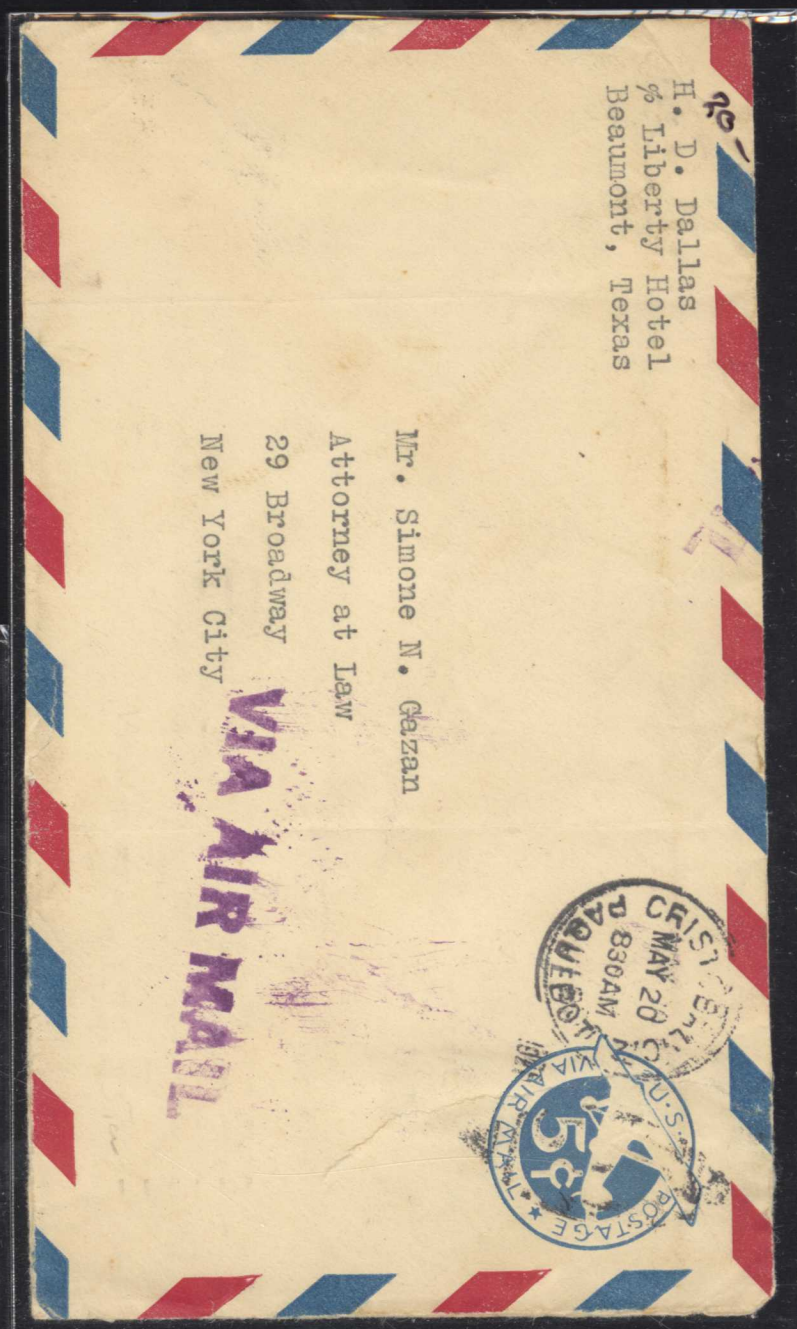


c.1902, 1C. 'McKinley' stat. postcard used from Jeremie to New Jersey with "Hamburg-American Line / Atlas Service / S.S. VIRGINIA", faults



ARMY/PAQUETBOT/JAIL CENSOR
Posted on board "U.S.A.T. REPUBLIC", entered mail at Balboa, C.Z., and censored at L.A. county jail.
UX, C2
DEM 100-



U429 incoming to Salem, OR from American Hawaiian Steam Co. 9 Dec 1919 "Panama Canal RPO" transit & very scarce "PAQUEBOT" of Ancon. Hosking 2529, rarity D. Entwistle Pq-5 & 1st one I've had or seen.
LAX \$150
gone U.S.A.



Mr. Richard J. Beck,
32-06 29th Street,
Long Island City,
New York

Premonal



Mejory H. Mackfeld & Co.

U330 (opened for display) San Francisco, CA to Honolulu, Hawaii 1892 from Pacific Mail SS Co to its agent in Honolulu

\$150 YL

P.M.C.

Honolulu.

H.S.

TOUEBOT



MISS. VIRGINIA JOHNSTON.

19 MAPLE STREET.

BATAVIA N.Y.
U.S.A.



THIS SIDE OF CARD IS FOR ADDRESS

Mr. Norman Atwood

*State Street
West Lafayette*

Indiana U.S.A.

UNLISTED ?

874236-C