

1853 envelope from Auckland (March 26) to Louth, Lincolnshire, England (August 20). Has red Crown Circle "PAID AT AUCKLAND" and manuscript '2' in red (2d paid by sender) and '8' in black (8d paid by recipient); these were the charges for a half ounce letter from April 1851 to March 1857. Time in transit = 147 days.

Full Face Queen Covers - Perforated

1873 2d vermilion cover Christchurch
20/11/1873 to Wellington, Earp
correspondence, sent per Ship

\$1500.00 NZM 3.1 166415



114

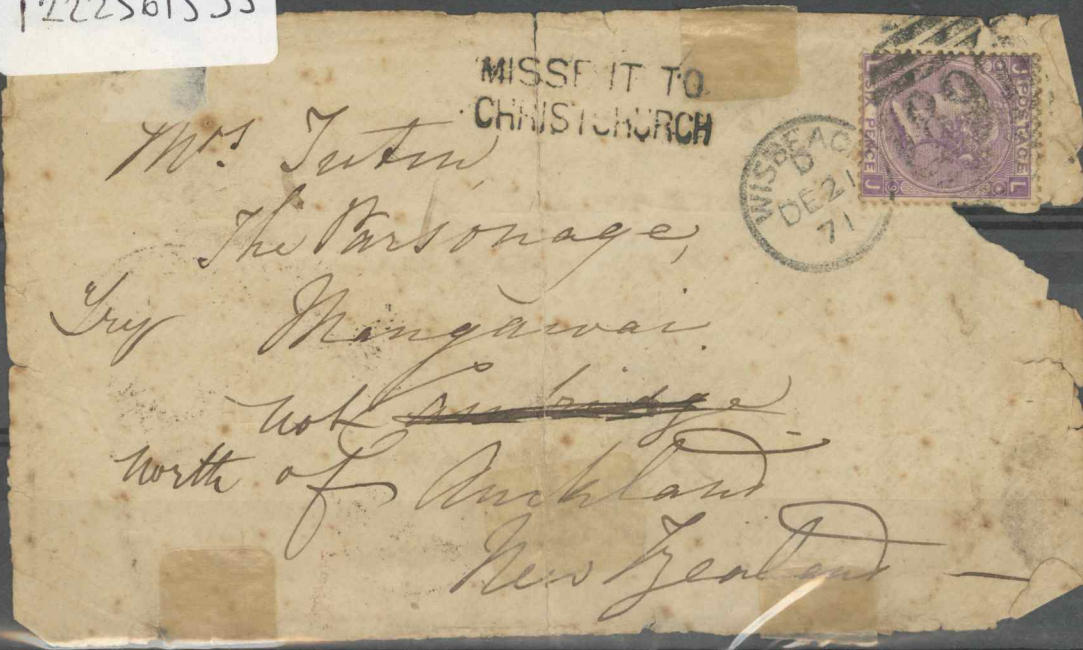


113



eBay

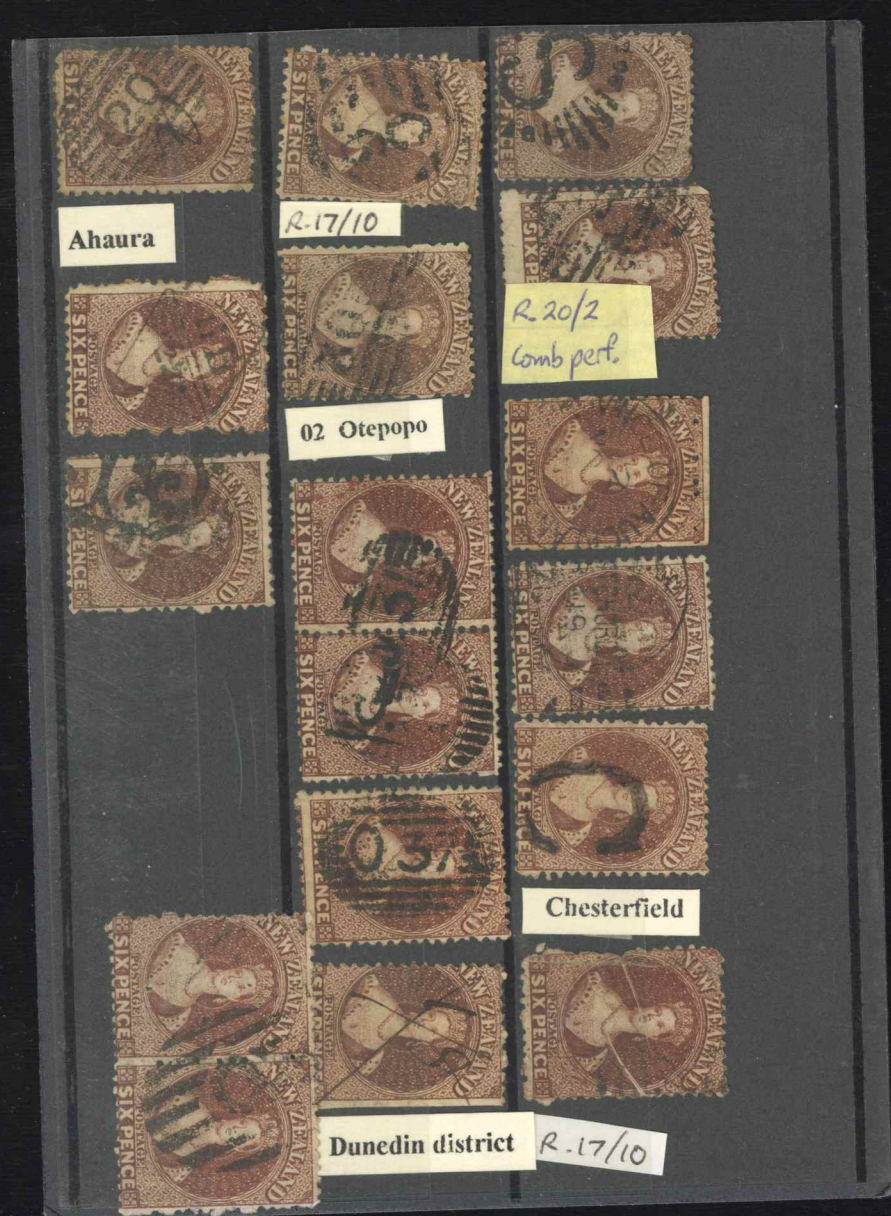
1222561535



113







Shipwreck Letter

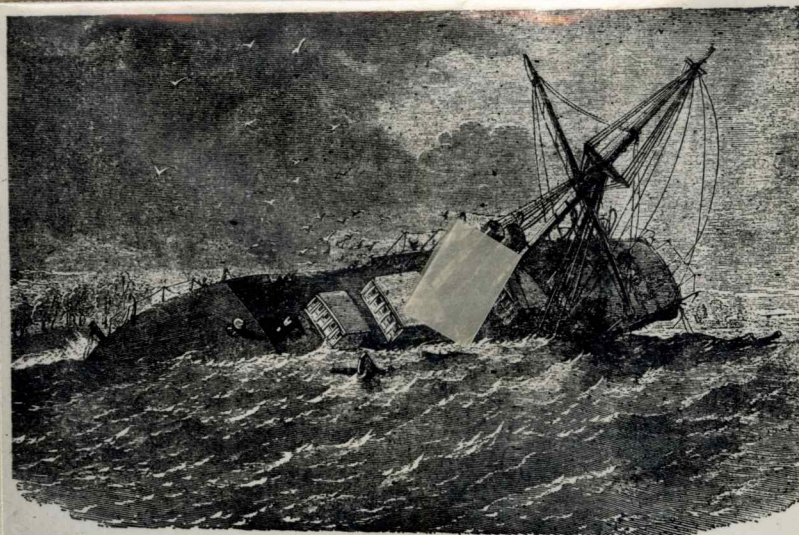
LYTTELTON
SP15
1862
NEW ZEALAND



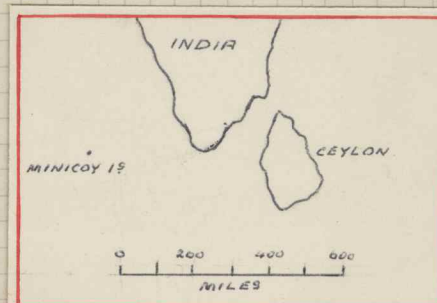
LONDON
AE
DE 31
62
PAID

Saved from the wreck of
the Colombo.

The "Colombo", a P. & O. steamer of 1,446 tons, was wrecked on Minicoy Is. in the Indian Ocean, on November 19th, 1862. The greater portion of the mail was recovered by divers, and, after careful drying, the letters were forwarded to their destinations. Those for London arriving either on December 27th or 31st, 1862. The salvage cachet is also known in red.



THE WRECK OF THE COLOMBO—1862.



**Engraving by Charles Henry Jeens
c. 1859**



negative engraved die of the Chalon Head
prepared for the Diamond Jubilee in 1897.

NEW ZEALAND

Re-Entries

Stamps printed by J. Davies on 'N.Z.'
watermarked Paper and Perforated 12½.

Matched Pairs



16.3 Faulty impression 2.4 mm. low. Upper frame line and some lines of the letters of 'NEW ZEALAND' duplicated and left shoulder line doubled. The deepest lines of engraving of the ribbon are doubled below the circle on the right as well as the circle and outer line of engine-turning at this place. Several spots of colour in the "postage" and value labels and in gutter, extending into the stamp below.

17.3. Double re-entry. Extrinsic re-entry. The evidence of the faulty impression of 16.3. Spots of colour extend down 1.25 mm. from top frame line and are most evident in the upper portions of the letters ZEAL.

17.3

Re-entry proper; Faulty impression 1 mm. low and .1 mm. to right. Faint doubling of the right vertical stroke of the N of NEW, of the curve of the D, of several lines of the face and necklace and of circle at right lower quadrant.

Forgeries



ANOTHER PROBLEM CAUSED BY THE MIS-ALIGNMENT OF THE IMPRESSIONS.

The mis-alignment of the impressions proved to be a handicap when perforating machines were introduced. The strip of six is a good example, while the single stamps show the after effects of the problems with the perforating machine.

