

DEPARTMENT OF AGRICULTURE
1873
PRINTED BY
CONTINENTAL BANK NOTE COMPANY



01



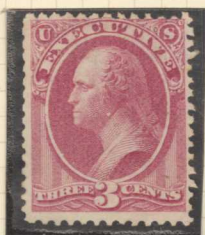
01



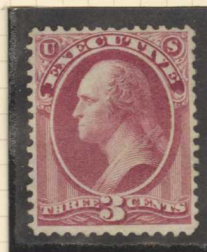
DEPARTMENT OF EXECUTIVE
1873
PRINTED BY
CONTINENTAL BANK NOTE COMPANY



010



CHARLIE



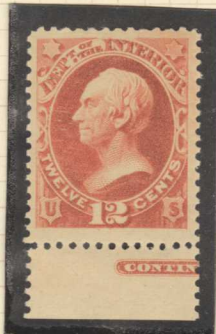
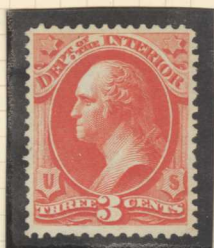
VIOLET ROSE



DEPARTMENT OF INTERIOR
1873
PRINTED BY
CONTINENTAL BANK NOTE COMPANY



015

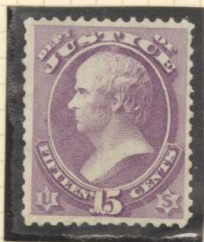
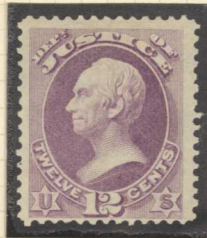
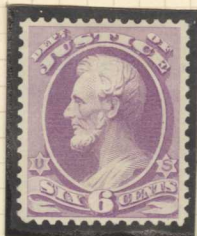


629

DEPARTMENT OF JUSTICE
1873
PRINTED BY
CONTINENTAL BANK NOTE COMPANY



025



034

DEPARTMENT OF NAVY
1873
PRINTED BY
CONTINENTAL BANK NOTE COMPANY



015



037a



037



045

DEPARTMENT OF POST OFFICE
1873
PRINTED BY
CONTINENTAL BANK NOTE COMPANY



047

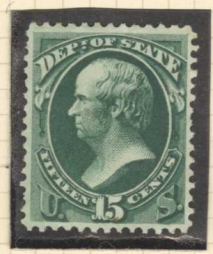


056

DEPARTMENT OF STATE
1873
PRINTED BY
CONTINENTAL BANK NOTE COMPANY



057



64

DEPARTMENT OF STATE
1873
PRINTED BY
CONTINENTAL BANK NOTE COMPANY



065

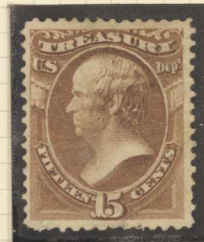
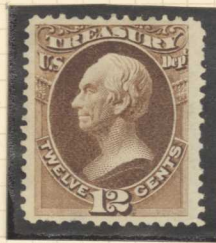


068

DEPARTMENT OF TREASURY
1873
PRINTED BY
CONTINENTAL BANK NOTE COMPANY



072

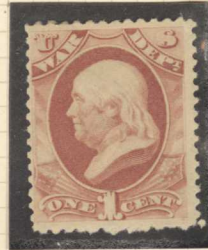


082

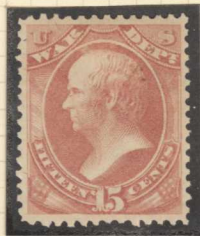
DEPARTMENT OF WAR
1873
PRINTED BY
CONTINENTAL BANK NOTE COMPANY



083



083



093

ISSUE OF 1879
SOFT POROUS PAPER
PRINTED BY
AMERICAN BANK NOTE COMPANY



096



097



097



098



099



0100



0101



0101



0102

ISSUE OF 1879
 SOFT POROUS PAPER
 PRINTED BY
 AMERICAN BANK NOTE COMPANY



0106



0107



0108



0109



0110



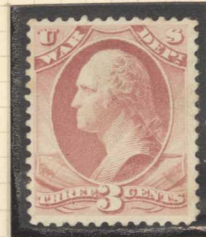
0111



0114



0115



0116



0117



0118



0119



0120

SPECIAL PRINTING
1875
CONTINENTAL BANK NOTE COMPANY



0475



0265



0355



0255



0105



0115



0125



0135



0145

SPECIAL PRINTING
1875
CONTINENTAL BANK NOTE COMPANY



019



025



035



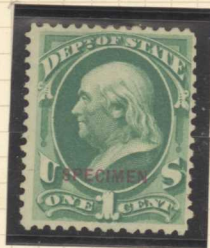
065



0105
0105



0155
0155



0375

SPECIAL PRINTING
CONTINENTAL 1881
~~AMERICAN~~ BANK NOTE COMPANY
OVERPRINTED "SP LSEMAN"
IN BLUE COLOR



610 XS



635 XS

PLATE PROOFS
CARDBOARD



068



030 P



040 P



021 P

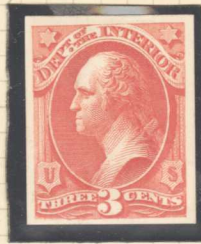


056 P

PLATE PROOFS
CARDBOARD



Q15P

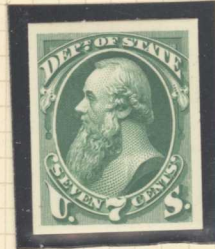


Q24P

PLATE PROOFS
CARDBOARD



057 P



071 P

FANCY CANCELLATIONS



NEGATIVE PURPLE STAR
075



WHEEL OF FORTUNE
089



SIX WEDGES
020



MALTESE CROSS
017



"IRON CROSS" 097



NEGATIVE "A"
079



POSITIVE "H"
086



GEOMETRIC
FT. LEVENWORTH, KS.
083 ~~083~~ 084



GEOMETRIC
WASHINGTON, DC.
037



POSITIVE "US"
086



RED CIRCULAR GRID
086



NUMERAL
PO. SUB-STATION
084



KICKING MULE
016



POSITIVE RED STAR
IN CIRCLE
091



POSITIVE STAR
IN CIRCLE 086



GRID
086



SHIELD
023



BLUE BULLSEYE
081



OPEN STAR
089



STAR IN CIRCLE
02



CLOVER LEAF
037



EIGHT WEDGES
020



FORT WINGATE
NEW MEXICO
014



POSITIVE "US"
089



MALTESE CROSS
079

CONTINENTAL BANK NOTE COMPANY



049



017



016



085



097



098

The Postmaster will please return this communication
if not called for in ten days.

Department of the Interior,
PENSION OFFICE.
OFFICIAL BUSINESS.



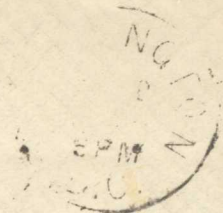
Wesley J. Butterfield,
East Corinth
Vt.

017

U. S. Patent Office.

OFFICIAL BUSINESS.

Return if not called for within 10 days.



Chief Clerk.

Hamilton E. Loring
30 Cortland St.
N. Y. City

018

United States Internal Revenue,

Collector's Office, District, Rhode Island.



*Pardon Hopkins
Lorn Clark
Providence R.I.*

1876

074