

Imperforate Vertically Variety



Imperf. Vertically Block



Imperf. Vertically Pair



Single Imperf. in Margin



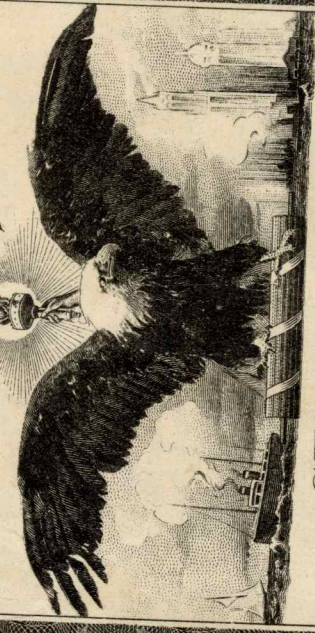
Block of Four - One hole only between each pair of stamps.



Perf 11 WS2  
Scott Spec. 1991 Error - 2. should be 5.

UNITED STATES OF AMERICA  
WAR-SAVINGS CERTIFICATE

THE TORCH OF LIBERTY



CERTIFICATE

This certifies that, subject to the terms and conditions printed herein, the owner named on the back hereof will be entitled to receive on January 1, 1923, in respect of each United States War-Savings Certificate Stamp of the Series of 1918 then affixed hereto, the amount indicated thereon as then payable or, at his option, will be entitled to receive at any earlier date in respect of each such Stamp then affixed hereto, the lesser amount indicated in the Table printed hereon.

January 2, 1918

W. G. McQuinn  
Secretary of the Treasury

U.S.C. FORM 1



NATIONAL DEFENSE ISSUE - SCOTT #901

Imperforate Vertically Variety



Imperf. Vertically Block



Imperf. Vertically Pair



Block of Four - Lower pair imperf.  
Upper pair one hole.

NATIONAL DEFENSE ISSUE - SCOTT #900

Imperforate Vertically Variety



Imperf. Vertically Block  
Left Pane



Imperf. Vertically Block  
Right Pane



*unused  
used*

Used Imperf. Vertically Pair



Block of Four - Upper pair imperf.  
Lower pair part perf.



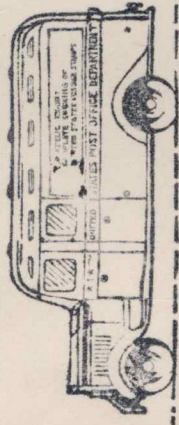
PHILATELIC TRUCK SOUVENIR SHEET

Issued by the United States Post Office Department in 1941.



Given to visitors to the Philatelic Truck which toured many cities with an outstanding display of stamps issued by the United States Post Office Department.

POST OFFICE DEPARTMENT  
PHILATELIC EXHIBIT



MAILED ON DISPLAY CAR



*A.K. Spindel*  
*408 Poplar St.*  
*Tulsa*  
*Okla.*

Cover with special cachet used on mail from the Philatelic Truck.

NATIONAL DEFENSE ISSUE

SCOTT #901

Imperf. Vertically Varieties

Imperf. Pair

Pair Imperf. Except One Hole

Imperf. Block of Four

Imperf. Border





CRYSTAL SILICA COMPANY

P.O. Box 1280, Oceanside, California 92054



OCEANSIDE CA  
OCT 31 1969  
U.S. POSTAGE  
10

Civilian car struck collection box  
Mail damaged by accident & fire

Mr. & Mrs. Ralph Clark  
920 Wilson  
Norman, Oklahoma

OCEANSIDE CA  
NOV 11 11 A.M.  
1969

THE NORTH GIN

Mountain View, Oklahoma

Damaged by Fire  
May 17 1946

They tried to burn this one.

Iding, Oklahoma City, Oklahoma.

MOUNTAIN VIEW  
MAY 17 6:15 P.M.  
1946  
5 CENTS

#15

RETURN IN 5 DAYS TO  
M. O. HUCK PAINT CO., INC.  
BOX 13, STATION 6,  
JACKSONVILLE, FLORIDA

WASHINGTON, D.C. & HARRISONBURG, VA. P.O.  
FEB. 10  
TRIP 1  
1941



FIRST TRIP

# U429 2¢ - Albino Embossed only  
Plus 1¢ stamp (899) to make 3¢ rate

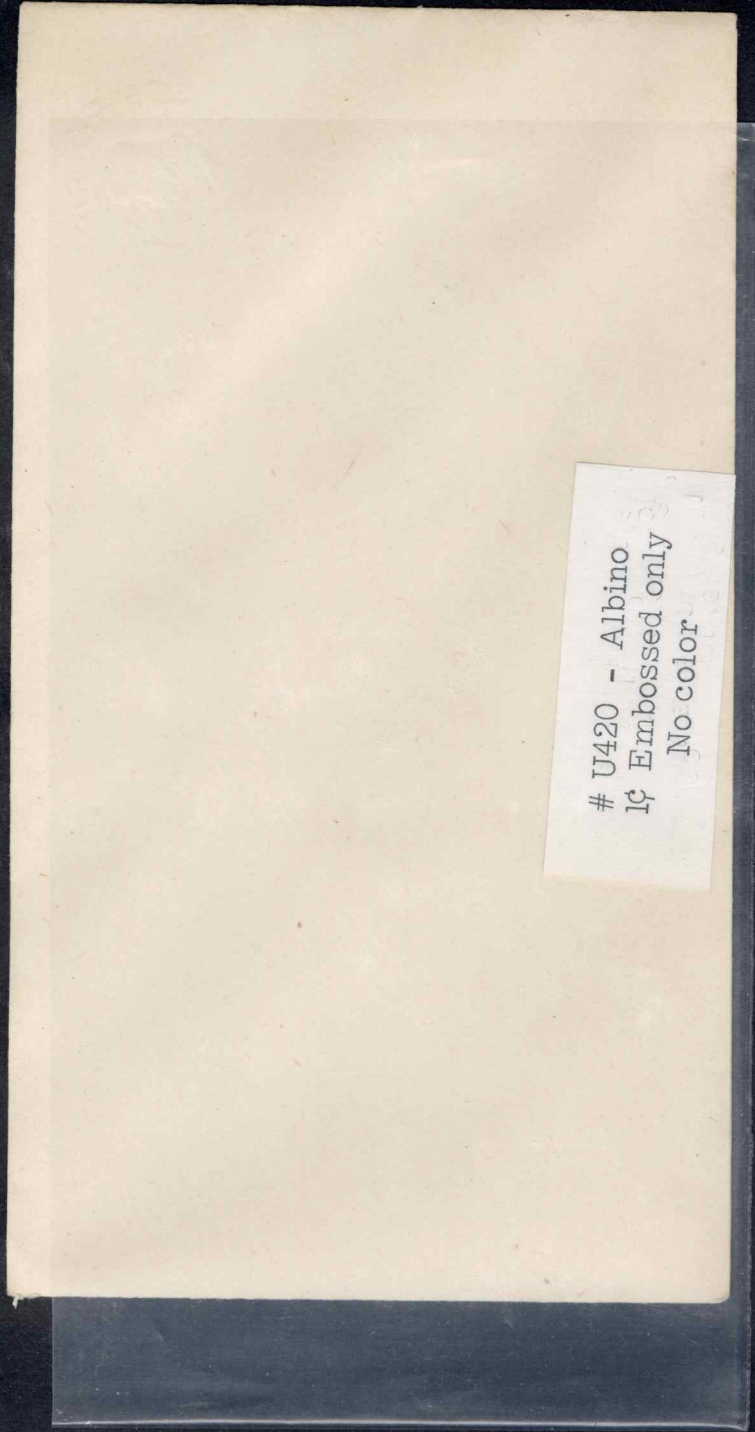
After.....days, return to

LAWTON, OKLA.

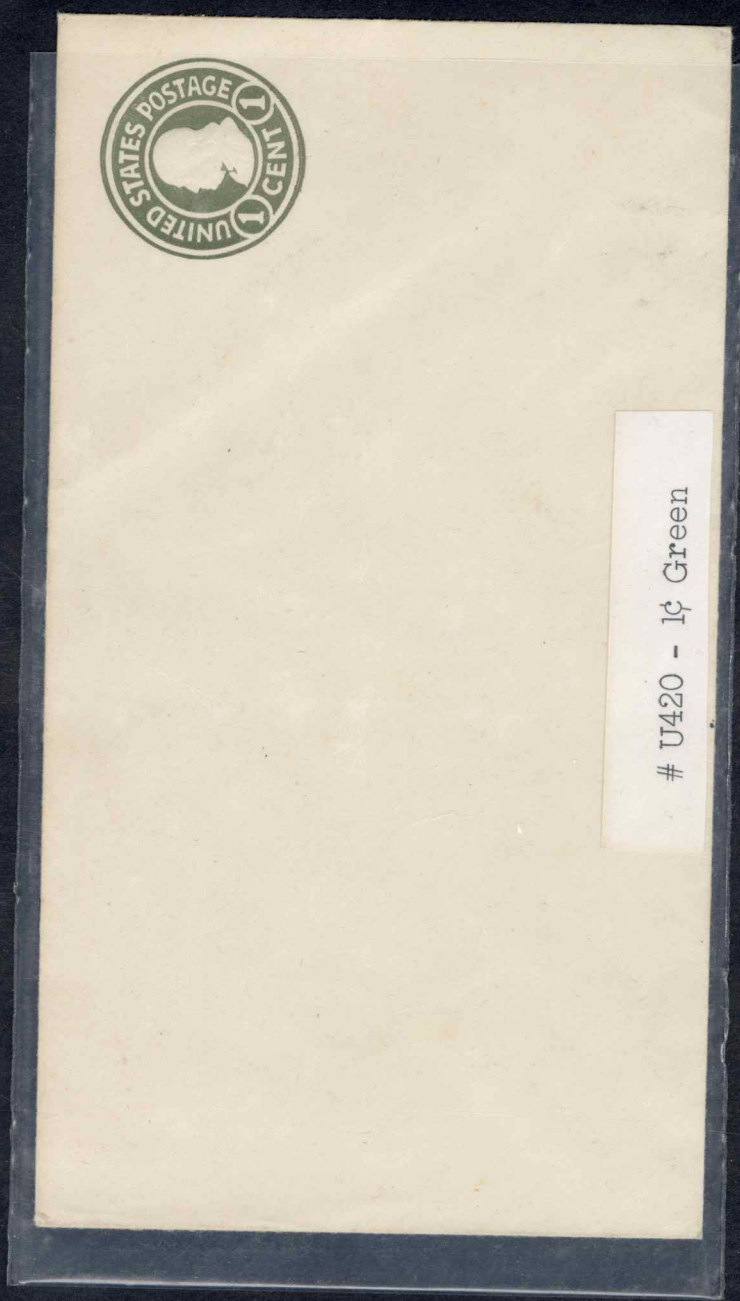


# U429 2¢ Carmine - This is a Carmine color. It should have been printed on the above Albino stamp.

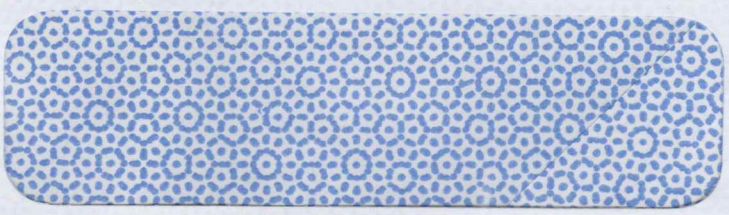
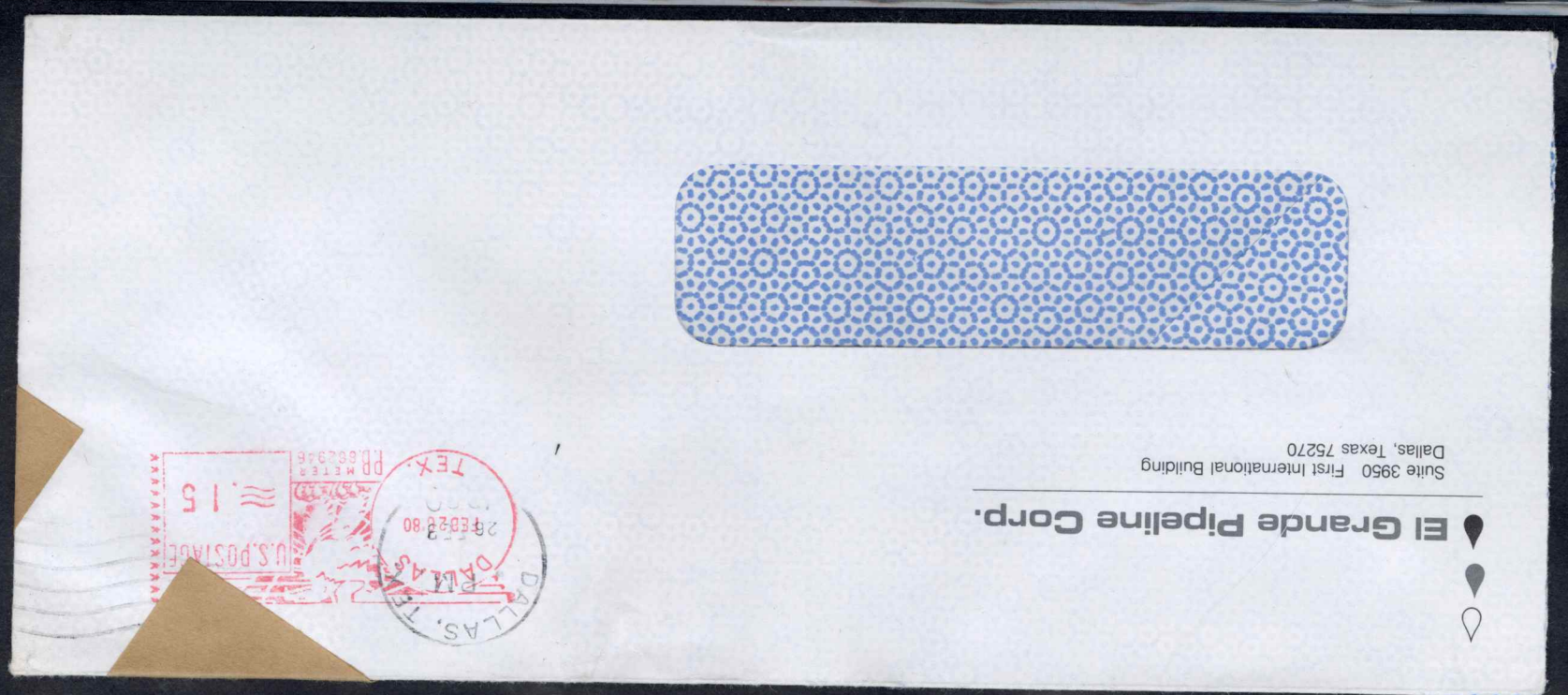




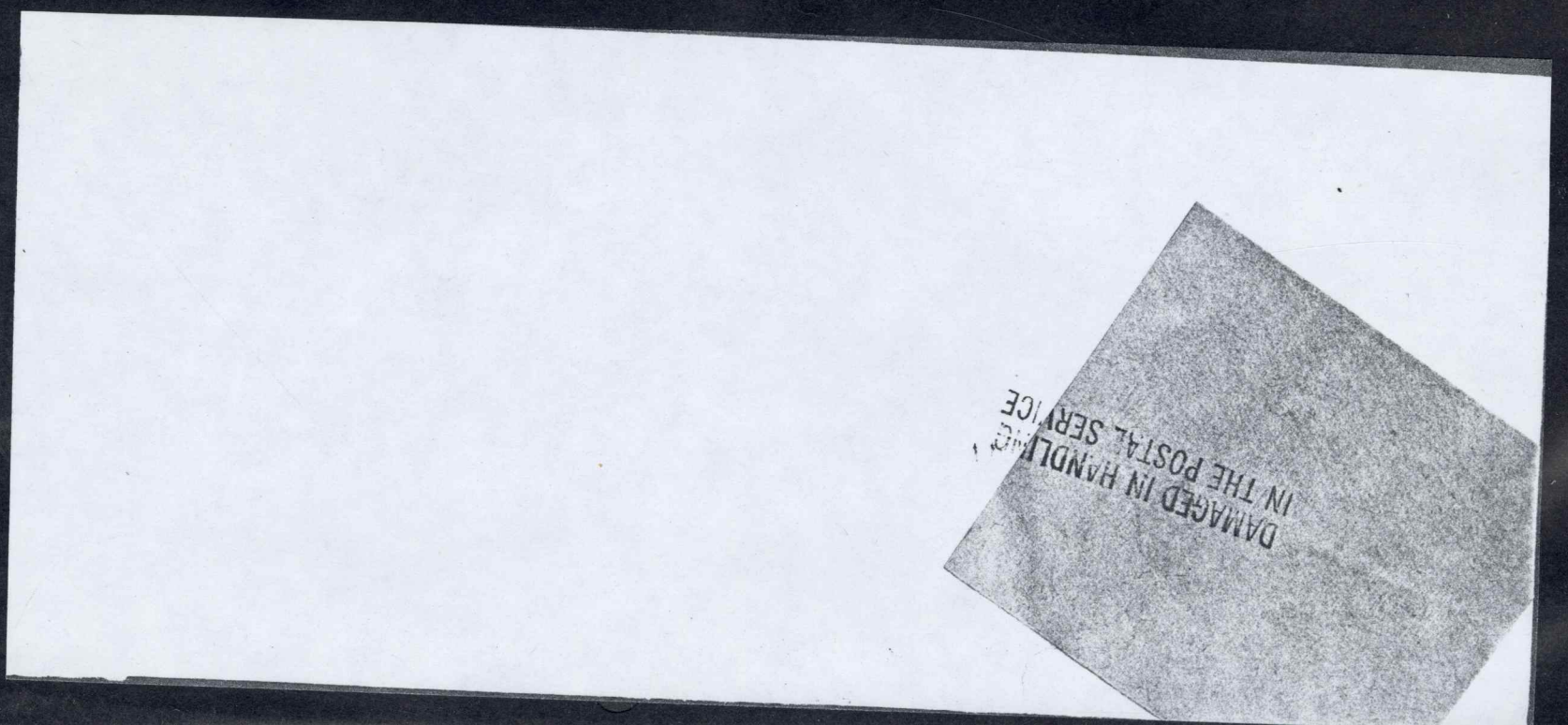
# U420 - Albino  
1¢ Embossed only  
No color



# U420 - 1¢ Green



El Grande Pipeline Corp.  
Suite 3950 First International Building  
Dallas, Texas 75270



DAMAGED IN HANDLING  
IN THE POSTAL SERVICE



# U436 3¢ Dark Violet - Regular envelope stamp  
Plus identical stamp cut from another envelope  
and added to make 6¢ rate. This is illegal.

First National Bank



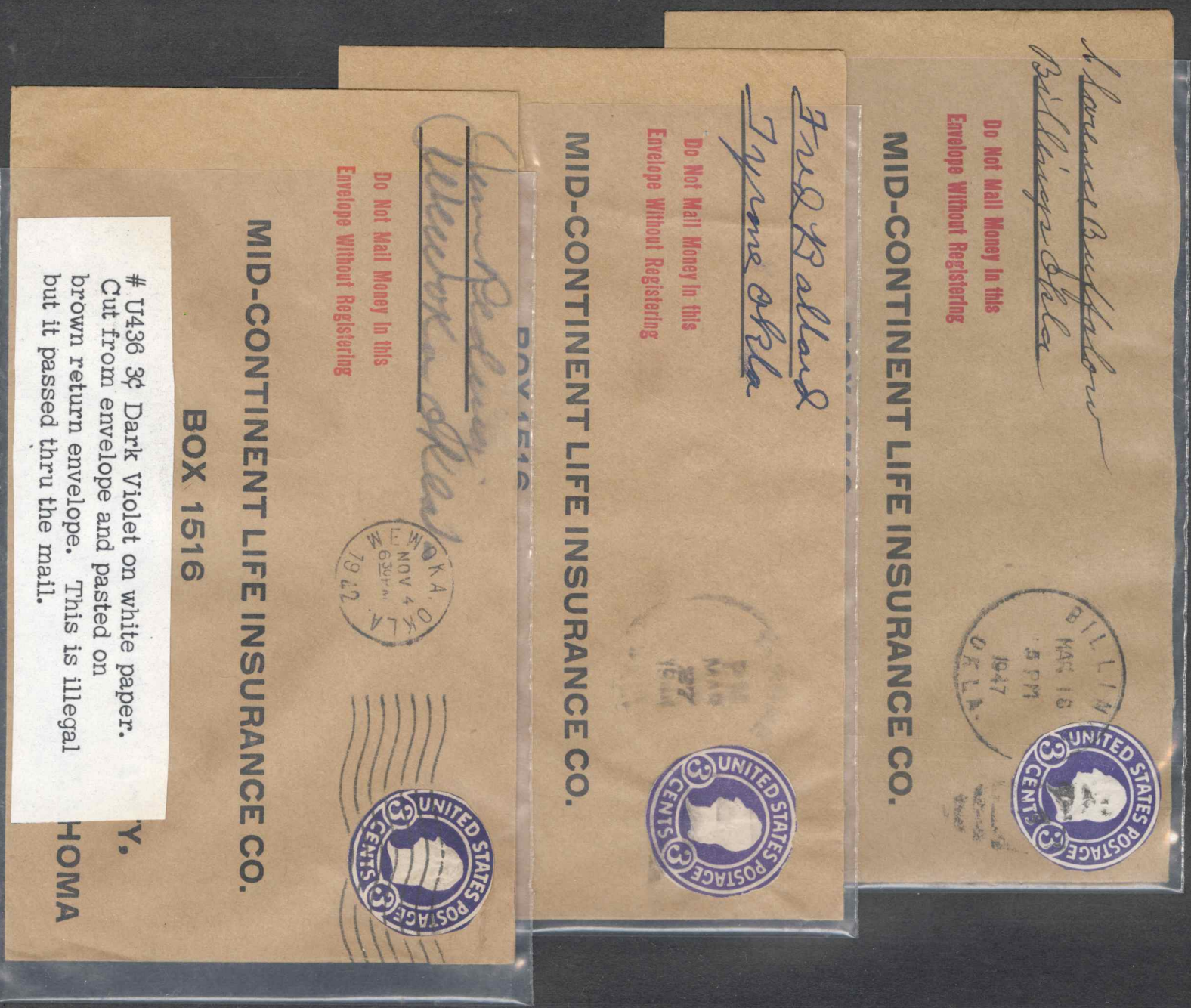
After 5 days, return to  
DENMAN FLOORS CO.,  
910 N. Hudson,  
OKLAHOMA CITY 3, OKLA.

# U436 3¢ dark violet  
Envelope folded inside out



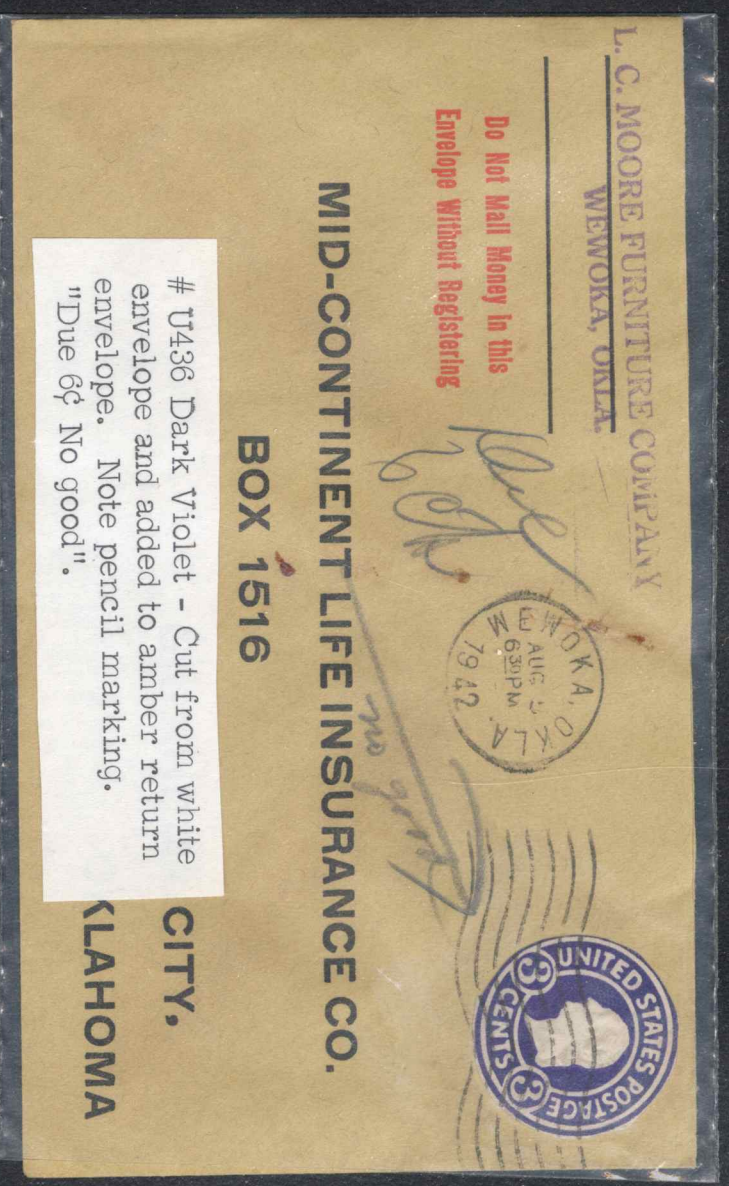
# U429 - Al bino  
2¢ Embossed only  
No color





# U436 3¢ Dark Violet on white paper.  
Cut from envelope and pasted on  
brown return envelope. This is illegal  
but it passed thru the mail.

Samsill 41298







COMMERCE BANK

Post Office Box 20428  
Oklahoma City, Oklah



UNITED STATES POST OFFICE  
OKLAHOMA CITY, OKLAHOMA 73125

In Reply Refer To  
511:TWheeland:ws

Dear Postal Customer:

We sincerely regret the damage your mail received during handling by the Postal Service and hope this incident will not seriously inconvenience you. We realize your mail is important to you and you have every right to expect it to be delivered in good condition.

Although every effort is made to prevent damage to the mail, occasionally this will occur because of the great volume handled and the rapid processing methods which must be employed to assure the most expeditious distribution possible.

We hope you understand and want to assure you we are constantly striving to improve our processing methods in order that even a rare occurrence can be eliminated.

Please accept our apologies.

Sincerely,

*Ann Ringgold*  
Procurement Clerk

Enclosure(s)

Do Not Mail Money in this  
Envelope Without Registering

MID-CONTINENT LIFE INSURANCE CO.

BOX 1516

*Ray E. Swater*  
*3 Fairview, Okla*

Do Not Mail Money in this  
Envelope Without Registering

MID-CONTINENT LIFE INSURANCE CO.

BOX 1516



Do Not Mail Money in this  
Envelope Without Registering

MID-CONTINENT LIFE INSURANCE CO.

BOX 1516

OKLAHOMA CITY,

OKLAHOMA

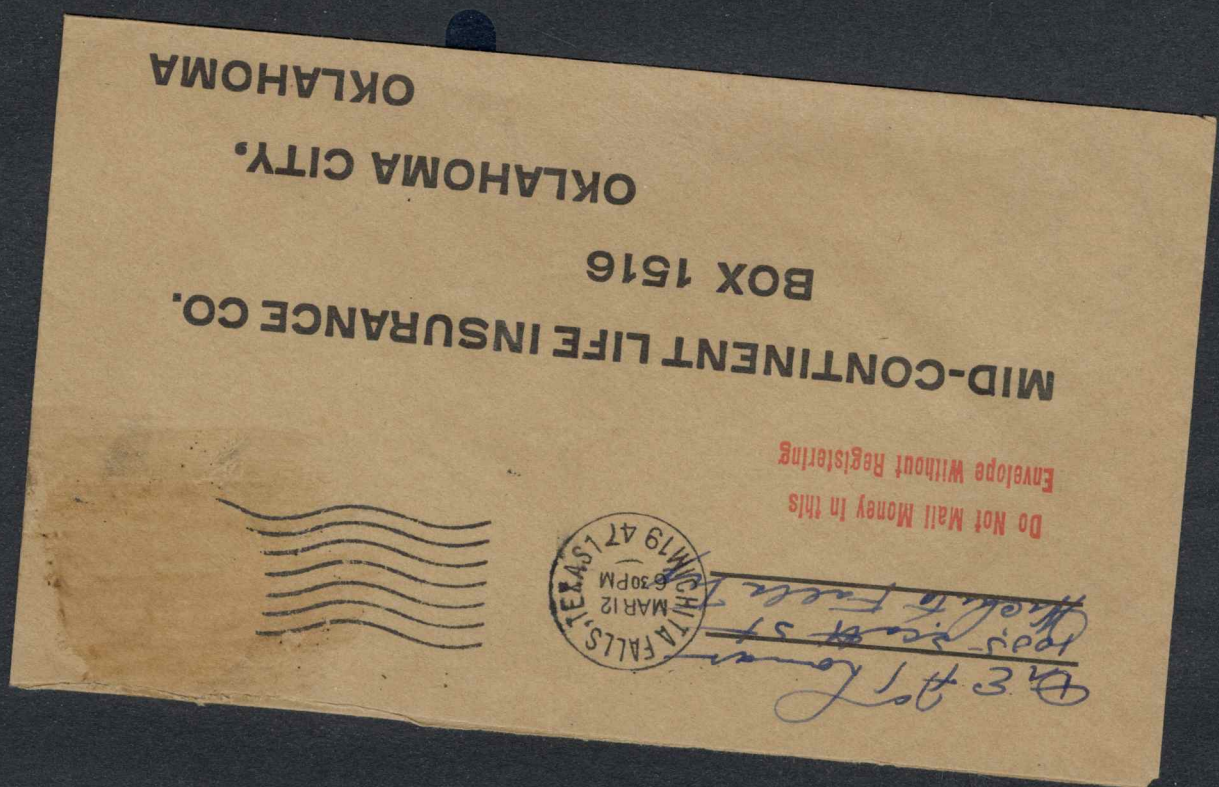
Post Office Efficiency!





MID-CONTINENT LIFE INSURANCE CO.  
BOX 1516  
OKLAHOMA CITY,  
OKLAHOMA

Do Not Mail Money in this  
Envelope without Registering



UNITED STATES POST OFFICE  
OKLAHOMA CITY, OKLAHOMA 73125

Dear Postal Customer:

We sincerely regret the damage your mail received during handling by the Postal Service and hope this incident will not seriously inconvenience you. We realize your mail is important to you and you have every right to expect it to be delivered in good condition.

Although every effort is made to prevent damage to the mail, occasionally this will occur because of the great volume handled and the rapid processing methods which must be employed to assure the most expeditious distribution possible.

We hope you understand and want to assure you we are constantly striving to improve our processing methods in order that even a rare occurrence can be eliminated.

Please accept our apologies.

Sincerely,

Postmaster

Enclosure (s)



Robert F. Pollard  
2737 Guilford Lane  
Oklahoma City, Oklahoma 73120

RETURN IN ENVELOPE  
Florida  
BLAINE COUNTY CLERK  
BOX 138  
WATONGA, OKLAHOMA 73122  
73172