

PRE-STAMP COVERS

5
L. M.
MILANO
Giacomo Tarodi
19^m Bart.^{co}
Genova

1829

6
MILANO
LUGLIO 4
L. M.
Bart. Tarodi Giacomo
Genova

1835

SARDINIA









INVERTED HEADS





Center blank

"e" instead of head

ESSAYS

1851-54



DOUBLE PRINT





Messa Sig. Direttore del giornale
Le Lettere per il popolo.
Firenze

#10



Sig.
Mozzi & Co.
Ferrara

#100



#10



DOI #11#



Messieurs
Mozzi & Co.
Ferrare



Respettissimo signor
Il signor Dotto. Fabio Serrani
Pontevede
di S. Pio alla bocca
c. 4140



Milano

By li-la agosto 1859
Sig. 4. 21. 1859



Sig.
Gioachino Piondo
Palermo



Sardinia

15
VIA MARE



Monsignore *Illmo & Revmo*
Monsig Janonio D' *Franco* *fernazai*
Udine

Al Egregio Sig. *Tuzignese* *Dovora*
Sig. *Ammini.* *ve* *Della* *Messa* *Vescovile*



P. Cremona.





1859

Madame Fanny Kuller
Neue Mainzer Strasse
Frankfurt. S. No. 7



#13c



BOLLO
FRANCO
C. QUARANTA

TORINO
14
LUGL
1859

PARIS
1859

ADRES & BUREAU

Messieurs
M. Bartorelli & C^{ie}
Lyon

BOLLO
FRANCO
C. POSTE. 40
C. QUARANTA

P.D.

Monsieur
Et = Péru ney =
rue de la bourse 33
Lyon



France



Messieurs A. Bonjoubal
Commissionnaires

Double frame line.



Non P.D.

Marieton

Agent de Change



24, Rue Imperiale

Lyon





Vatican City

POSTAL ISSUES



MADE IN U.S.A.

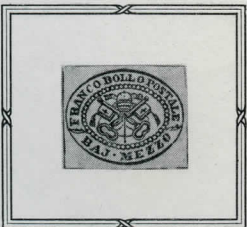
Roman States

1852

Imperforate

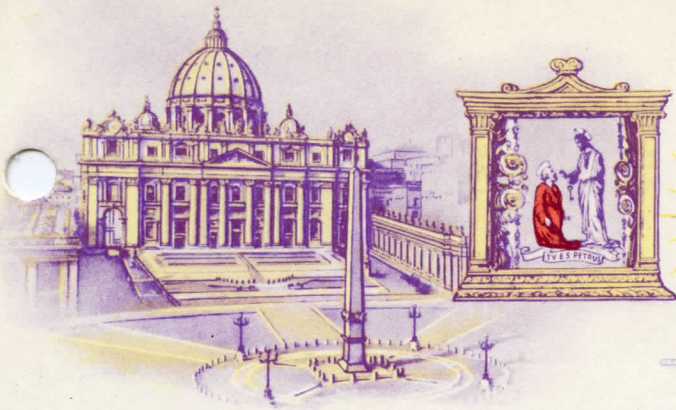
The issue of 1852 was printed on colored paper of varying thickness by the typography method. The stamps were printed by the Printing Office of the Apostolic Camera from engravings of the firm of Boublot and Decoppet.

The first eight values of this series was issued in sheets of one hundred divided into four panes of twenty-five stamps. They were placed on sale for the first time on January 1, 1852.



F 5-300

Whitefish



Vatican City

POSTAL ISSUES



MADE IN U.S.A.

Roman States

1852

Imperforate



Each Roman States stamp bears the Papal Tiara and Crossed Keys as its main design. Tradition claims that the tiara symbolizes the three roles of the Pope—lawgiver, judge and teacher. Another story passed through the ages states it represents the sovereign authority of the Pontiff over the three churches — militant, suffering and triumphant.

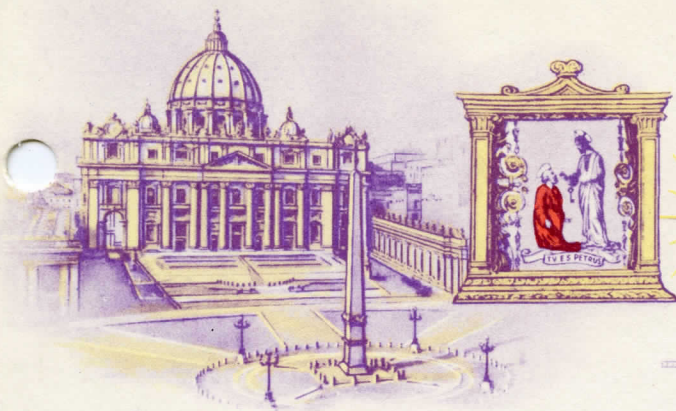


The Crossed Keys symbolize the authority of the Popes as successor of Saint Peter. This authority was originally given Saint Peter through the words of Christ, "To thee I will give the Keys to the Kingdom of Heaven."



F 8-300

Walters



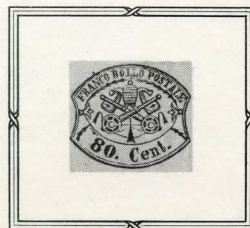
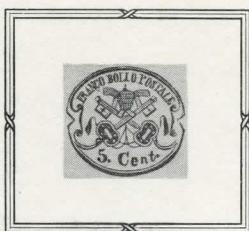
Vatican City

POSTAL ISSUES

Roman States

1867

Imperforate



On September 21, 1867, this set of seven stamps was placed on sale. The change in the monetary system to centesimi and lira made the stamps of this series necessary. This issue was printed on glazed surface colored paper by the typography method. The stamps were released in sheets composed of sixty-four stamps divided into panes of sixteen.

MADE IN U.S.A.

F B-300

Whitely





Vatican City

POSTAL ISSUES



MADE IN U.S.A.

F 5-300





Vatican City

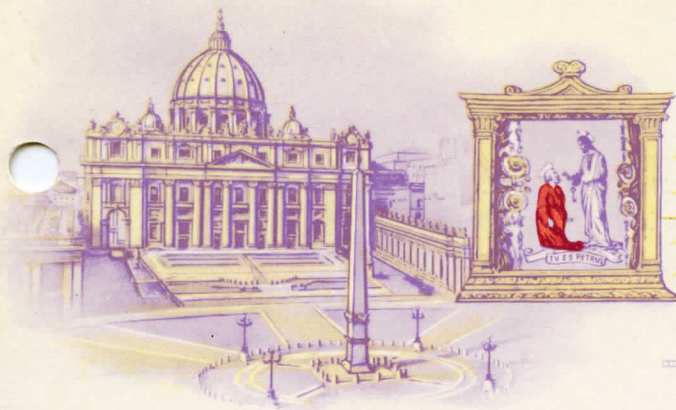
POSTAL ISSUES



MADE IN U.S.A.

FS-300

W. H. R. Co.



Vatican City

POSTAL ISSUES



MADE IN U.S.A.

F 8-300

Whitely



Vatican City

POSTAL ISSUES



MADE IN U.S.A.

FS-300

Handwritten signature



Vatican City

POSTAL ISSUES



MADE IN U.S.A.

FS-300

W. H. & A.



Vatican City

POSTAL ISSUES



MADE IN U.S.A.

F.S. 300



Vatican City

POSTAL ISSUES



MADE IN U.S.A.

F 8-100

Walter



Vatican City

POSTAL ISSUES



MADE IN U.S.A.

F.S. 300

Walden



Vatican City

POSTAL ISSUES

Part 13



MADE IN U.S.A.

F 8-300

Walters





MACERATA

all' Umo
Sig. Settimio Siviacci
Via Malpaso n. 11.

Roma



Signor
Luigi Nepoti
Napoli



FRANCO
BOLLO POSTALE
BAJ. 5

POSTA CENTRALE
ROMA

Sig. C. Forquet & L. Giusto
Napoli.

POSTA CENTRALE
ROMA

POSTA CENTRALE
ROMA

BAJ. 5

Sig.ⁿⁱ C. Forquet & L. Giusto
Napoli.

G. CECCHI
ROMA

Made in Germany



Sig. Costantino Bucci

Civitavecchia



S. M. S. S. S.

S. P. Pantanello Bucci



*Master Woodbury
Cantieri di Roma*



S. M. S. S. S.

*Sig. Costantino Bucci
Civitavecchia*





L. PELIGOT
ROME



Signor

Cost. Bucci

Civitavecchia



VENELE PANTANELLA
ROMA



Al Sig. Costantino Bucci

Civitavecchia

ccchia



Al Signore

Sig. Costantino Buui

Civita Vecchia

*Sig. Costa
Civita*



Al Signore

Sig. Costantino Buui

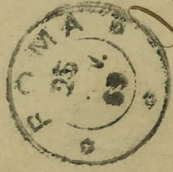
Civita Vecchia

*Al Signore
Sig. Costantino Buui*

Sig. Costa



Signor



Signor

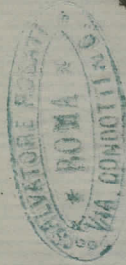
Costantino Bucca



Fig. Costantino Bucca

Spedizionario

Civitatevecchia



Al. Signore

Fig. Costantino Bucca

Civitatevecchia



C. Bucca

Civitatevecchia



SEMPRE
ROMA
VIA CONDOTTI 6



ROMA
FEB
1869

Signore

Constantino Bucci



SEMPRE
ROMA
VIA CONDOTTI 6

ROMA
FEB
1869

M. Squore

Fig. Costantino Bucci

Civita Nuova



ROMA
FEB
1869

Fig. Costantino Bucci



SEMPRE
ROMA
VIA CONDOTTI 6



SEMPRE
ROMA
VIA CONDOTTI 6

ROMA
FEB
1869

Fig. Costantino Bucci

Civitavecchia