

THE FOREIGN SERVICE  
OF THE  
UNITED STATES OF AMERICA

AMERICAN CONSULATE  
MANILA, PHILIPPINE ISLANDS

TO BE FORWARDED BY  
AIR FROM SINGAPORE

VIA AIR MAIL



OFFICIAL CORRESPONDENCE  
*Paul Skuntz*  
AMERICAN CONSUL  
Manila, P. I.

AIR MAIL  
(SINGAPORE)  
VIA "CLIPPER"  
GEPASSEERD

Courtland Christiani, Esquire,  
American Vice Consul,  
Surabaya, Java.



VIA AIR MAIL

NOV. 12, '41

40



F14-23a  
Manila-Singapore, May 9-10, 1941  
Circular Official Cachet, Green ? qty



F14-28 San Francisco-Shanghai, June 3-6, 1947  
Purple Cachet, ? pieces



F14-29 Honolulu-Shanghai, June 4-6, 1947  
Blue Cachet, ? pieces

F14-40



F14-40F



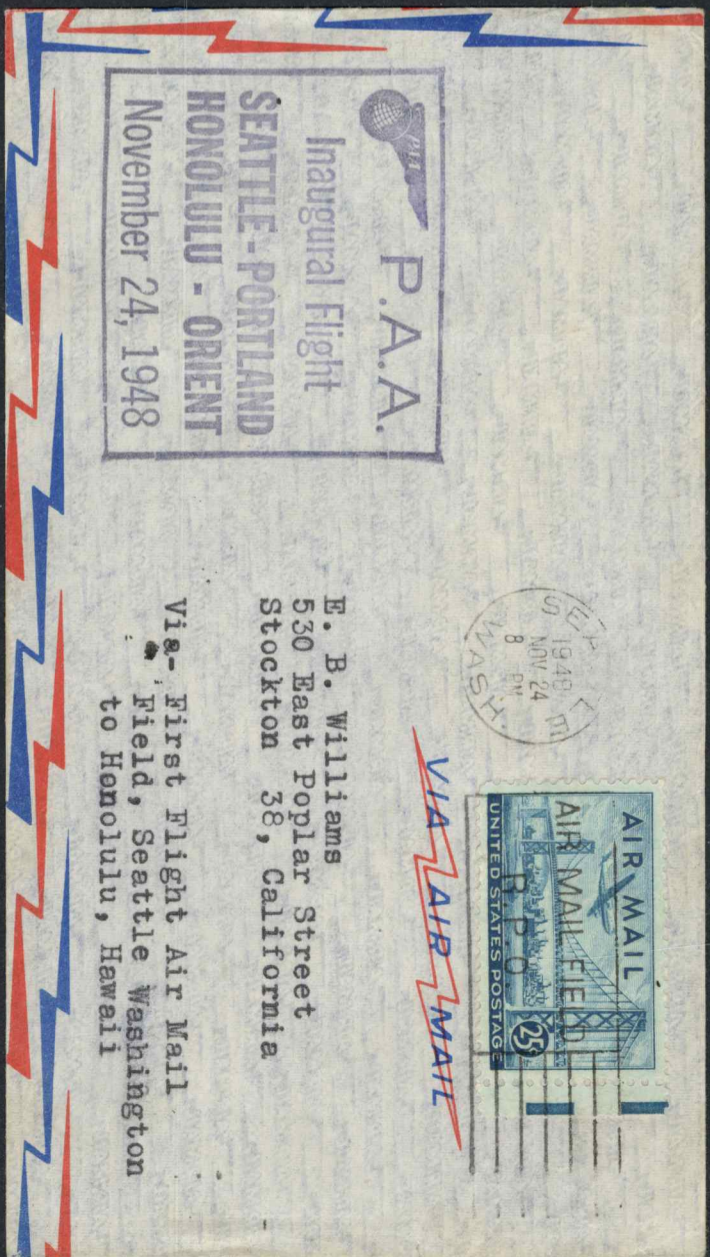
MADE IN SWEDEN BY B. JAGNER AB



F 18-80



F 14-60 Fa



F 14-45



S.F. to WAKE  
F14-75F  
ONLY 158  
PIECES \$25



MADE IN SWEDEN BY E. HAGNER AB



HONOLULU  
to WAKE  
F14-76  
only 383  
Pieces \$12



John J. Smith  
% Postmaster  
Wake Island

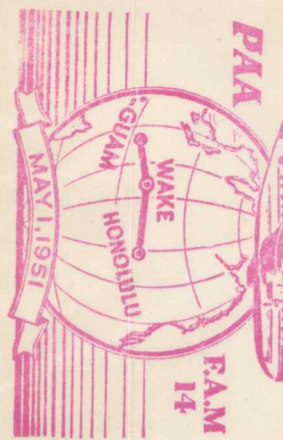
F14-78a



ORVILLE M HEWITT  
Colonel USA Ret'd  
6 East Forest Road  
Biltmore Forest  
Asheville No Car



FIRST AIR MAIL SERVICE  
WAKE



24261

Miss "Honey" Kastl  
465 Douglass Street  
San Francisco, 14, Calif.

F14-79a  
WAKE to GUAM  
\$7.50

GUAM to WAKE  
F14-79  
ONLY 229  
Pieces \$20



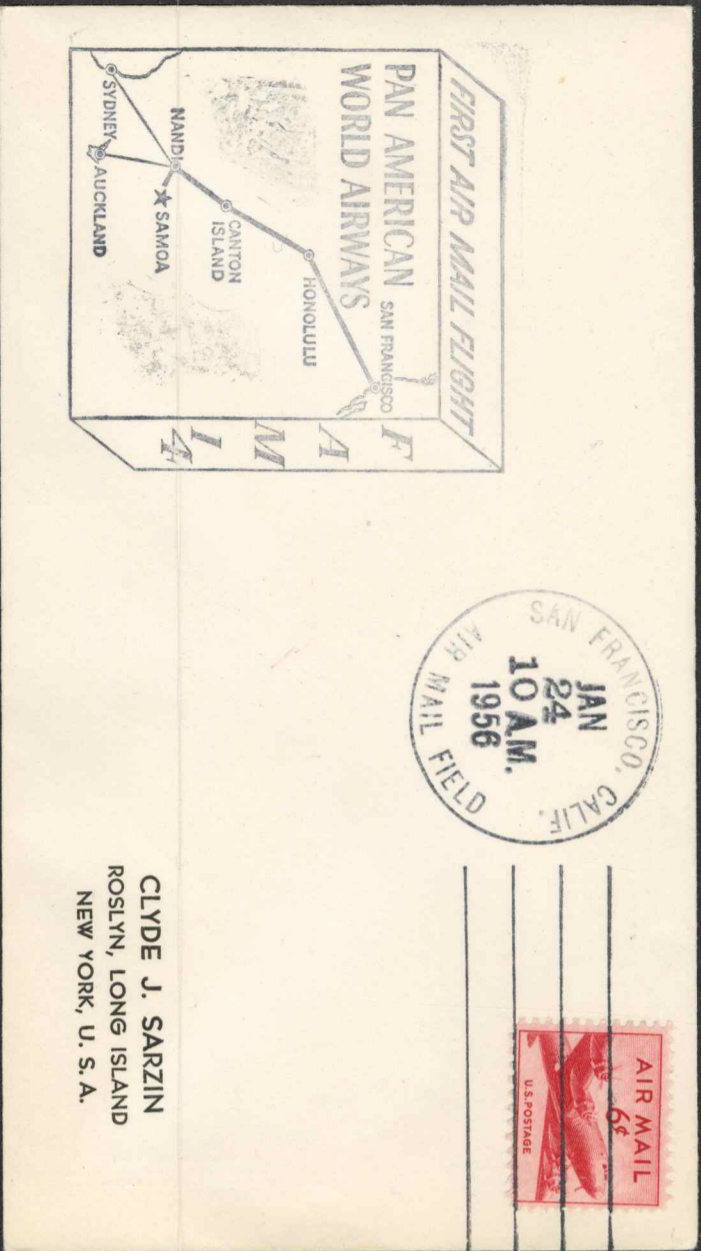
John J. Smith  
% Postmaster  
Wake Island







F14-105 F



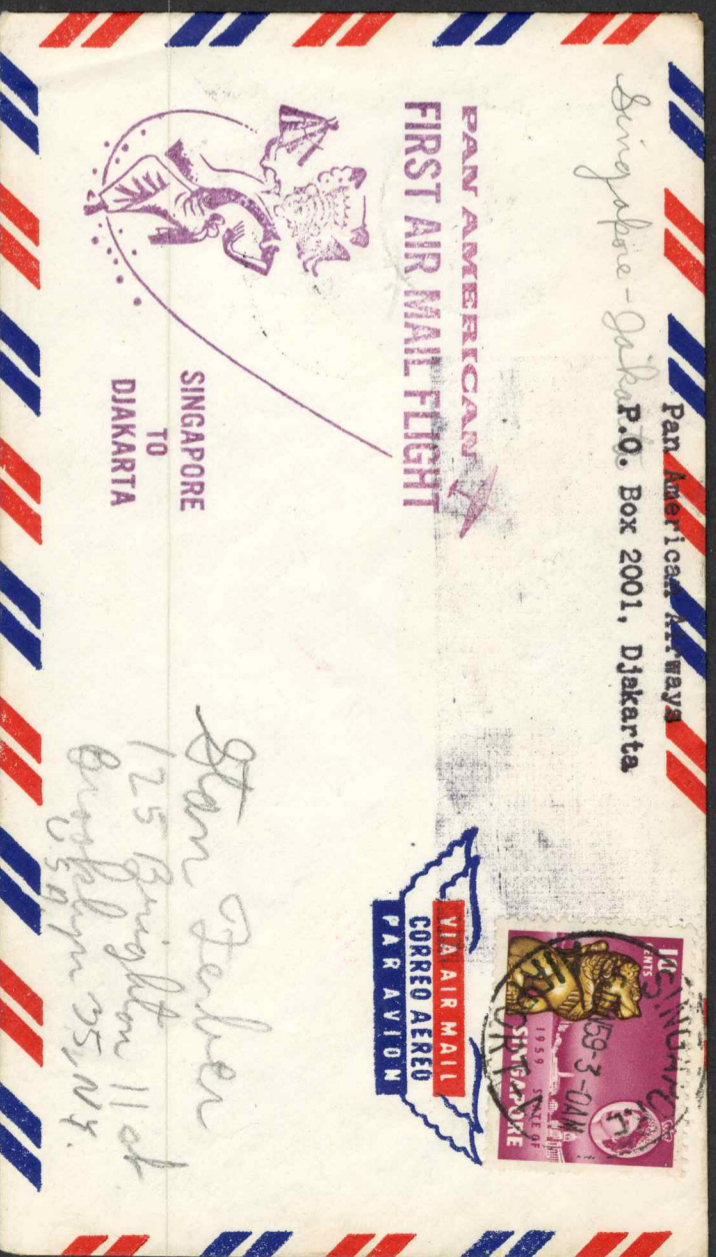
F14-107 a



F14-130



F14-131



MADE IN SWEDEN BY B. HAGNER AB





MADE IN ENGLAND — HÄGNER — MADE IN ENGLAND — HÄGNER — MADE IN ENGLAND — HÄGNER — MADE IN SWEDEN BY B. HÄGNER AB — MADE IN SWEDEN BY B. HÄGNER AB — MADE IN SWEDEN BY B. HÄGNER AB



1230 Historical Flights related to FAM 14 Flights  
San Francisco-Hawaii, April 16-17, 1935



To FROM  
Pan American Airways, Inc.,  
San Francisco, Cal.

From TOSid Rosenblatt  
2104 East 19th St  
Brooklyn, N. Y.



Tussell Cross  
Box number TW0  
Miami, Florida  
U. S. America

AAMS # 1228

USS NITRO

cover

(500 carried)

Lt. J. G. Johnson

(Later Admiral)

Mar 8, 1935

*J. G. Johnson*



T.O. #1228  
WAKE IS. #85





1230a Historical Flights related to FAM 14 Flights  
Hawaii-San Francisco, April 22-23, 1935



FROM  
Pan American Airways, Inc.  
Honolulu, T. H.

TO  
Col. L. G. Blackman  
Honolulu, Hawaii



1230b Historical Flights related to FAM 14 Flights  
San Francisco-Hawaii-San Francisco, April 16-23, 1935



FROM  
Pan American Airways, Inc.  
HONOLULU, H. T., U. S. A.

TO  
Mr. C. B. Eilenberger  
1109 Connecticut Avenue  
Washington, D. C.



1243c Historical Flights related to FAM 14 Flights  
San Francisco-Guam-San Francisco, October 5-24, 1935



Mr. J. J. Rice,  
Division Manager,  
Pan American Airways, Inc.,  
Rio de Janeiro, Brazil.  
Via San Francisco & Guam.



1243 Historical Flights related to FAM 14 Flights  
San Francisco - Guam, October 5-13, 1935



M. E. Miller,  
Box 125,  
Honolulu,  
Hawaii.

VIA SAN FRANCISCO, CALIF. AND GUAM  
VIA SAN FRANCISCO.







**ALAMEDA-HONOLULU-MANILA-MACAO-HONG KONG**  
 Via Pan-American Airways, October 14, 1936

Mr. Amon G. Carter,  
 Hong Kong Hotel,  
 Hong Kong, China.



21474



#46  
 Crampon, Oct. 14, 1936 - Press Flight Philippine Clipper, SF to Hong Kong w/ Pan Am President Juan T. Tripe Aboard. Later this same month, paying passenger service was inaugurated on the route. On the 10/14 flight, those aboard were guests of Pan Am.

T.O. 1292 (to S.F.)  
 SCARCE  
 LUHANGAREI  
 DISPATCH 440.

AIR MAIL.

**NEW ZEALAND PLIGHT**  
**1st OFFICIAL AIR MAIL**  
 DECEMBER, 1937.

Part  
 American Airways  
 NEW ZEALAND  
 to



BY AIR MAIL  
 PAR AVION

*to H. Rice  
 with good plimors.  
 Singapore, S. S.*

1292a  
 Historical flights related to FAM 14 flights  
 Auckland - Hawaii, (19307 flown), Dec 28, 37 -  
 Jan 3, 1938.

**FIRST OFFICIAL TRANS-PACIFIC AIR MAIL**

**NEW ZEALAND - U.S.A.**  
**FIRST AIR MAIL**  
**DECEMBER, 1937.**

**BY AIR MAIL**  
**PAR AVION**

The Dominien Stamp Co.,  
 P.O. Box 52,  
 Gore,  
 NEW ZEALAND.

**AUCKLAND—HONOLULU**



1292b  
Historical Flights related to FAM 14 Flights  
Auckland - San Francisco, (? flown) Dec 28, 37 -  
Jan 6, 1938.



1292c  
Historical Flights related to FAM 14 Flights  
Wellington - Pago, (5887 flown), Dec. 28, 37 -  
Jan 1, 1938.



F14-1  
San Francisco-Manila, November 22-29, 1935  
Green Cachet, 44,346 pieces  
November 22, 1935 is also a First Day Cover, C-20



F14-1  
San Francisco-Manila, November 22-29, 1935  
Green Cachet, 44,346 pieces  
November 22, 1935 is also a First Day Cover, C-20

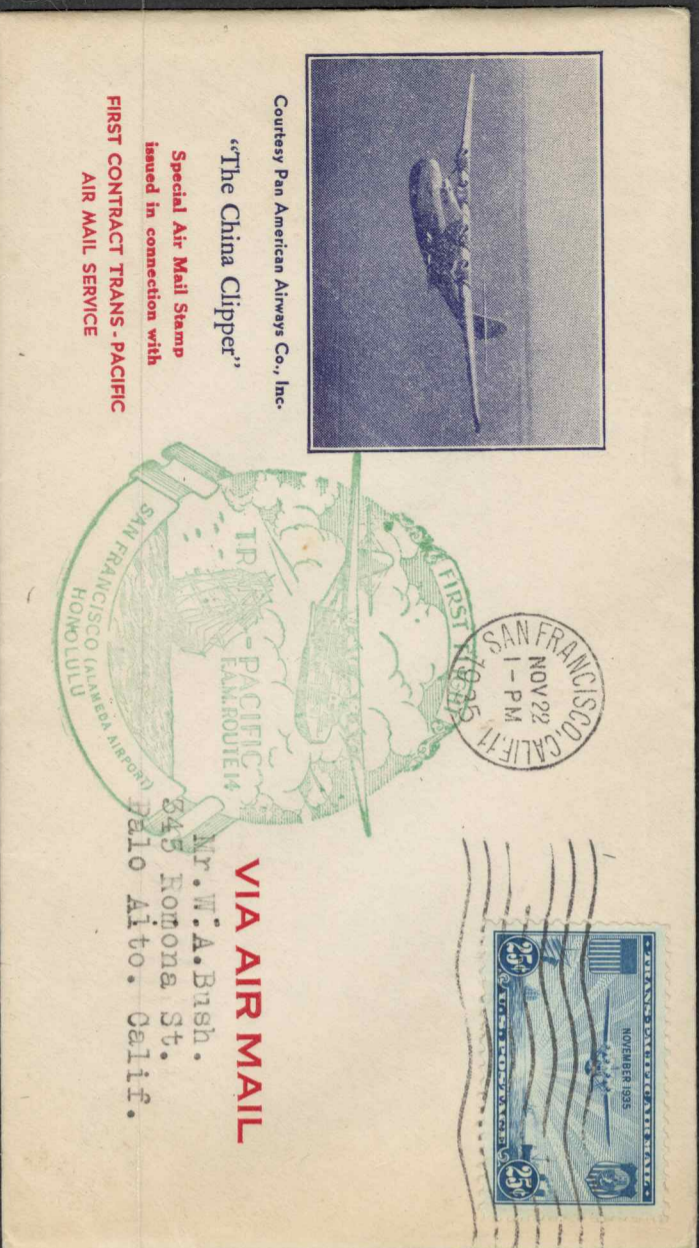




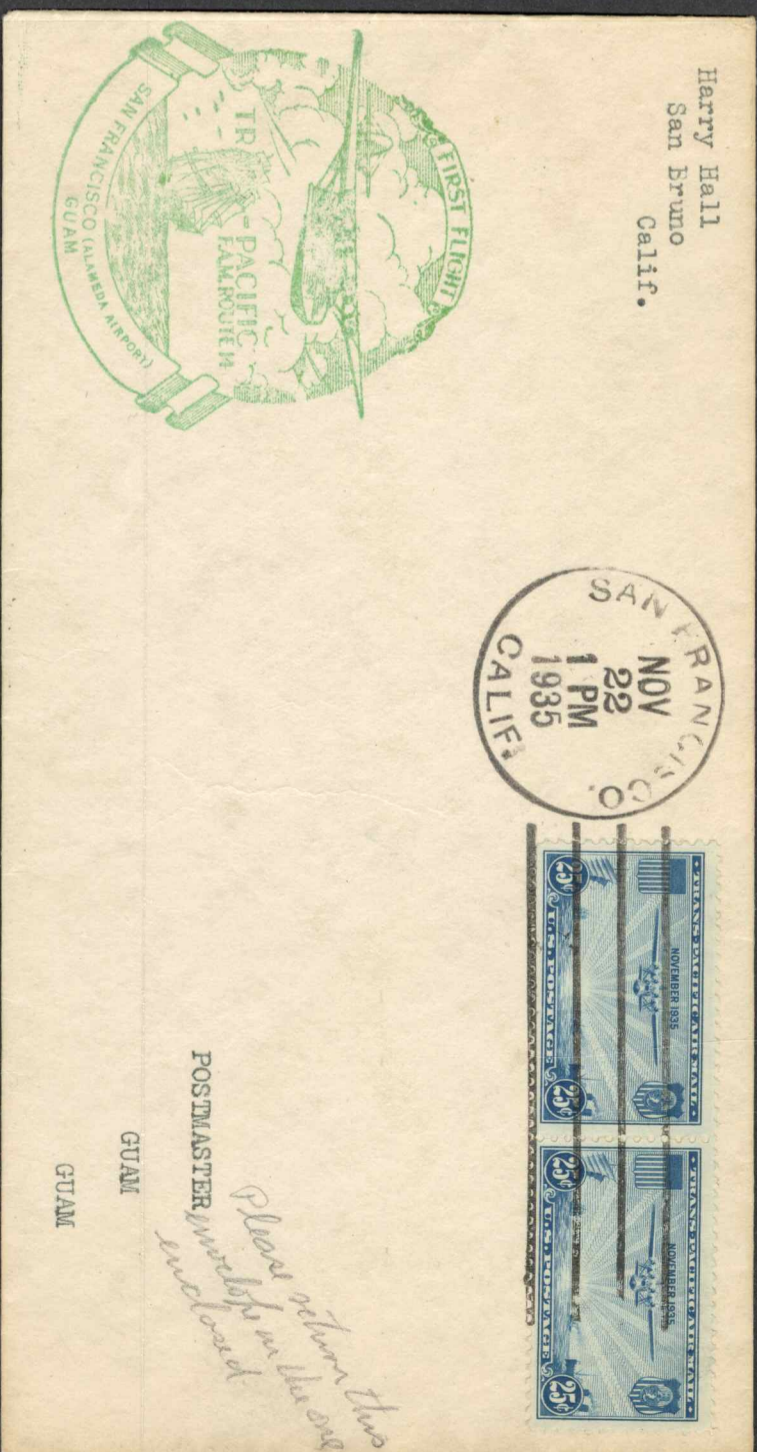
F14-1 San Francisco-Manila, November 22-29, 1935  
 Green Cachet, 44,346 pieces  
 November 22, 1935 is also a First Day Cover, C-20



F14-1a San Francisco-Honolulu, November 22-23, 1935  
 Green Cachet, 46,561 pieces



F14-1b San Francisco-Guam, November 22-27, 1935  
 Green Cachet, 19,959 pieces



F14-2 Honolulu-Manila, November 24-29, 1935  
 Magenta/Purple Cachet, 6,968 pieces



MADE IN SWEDEN BY P. HÄGNER AB



F14-1b

San Francisco-Guam, November 22-27, 1935  
Green Cachet, 19,959 pieces  
USPS covers carried for the Post to West 1st Flt.



F14-2a

Honolulu-Guam, November 24-27, 1935  
Magenta/Purple Cachet, 6,430 pieces  
Raley Cachet, the most rare of all.





F14-2a Honolulu-Guam, November 24-27, 1935  
Magenta/Purple Cachet, 6,430 pieces



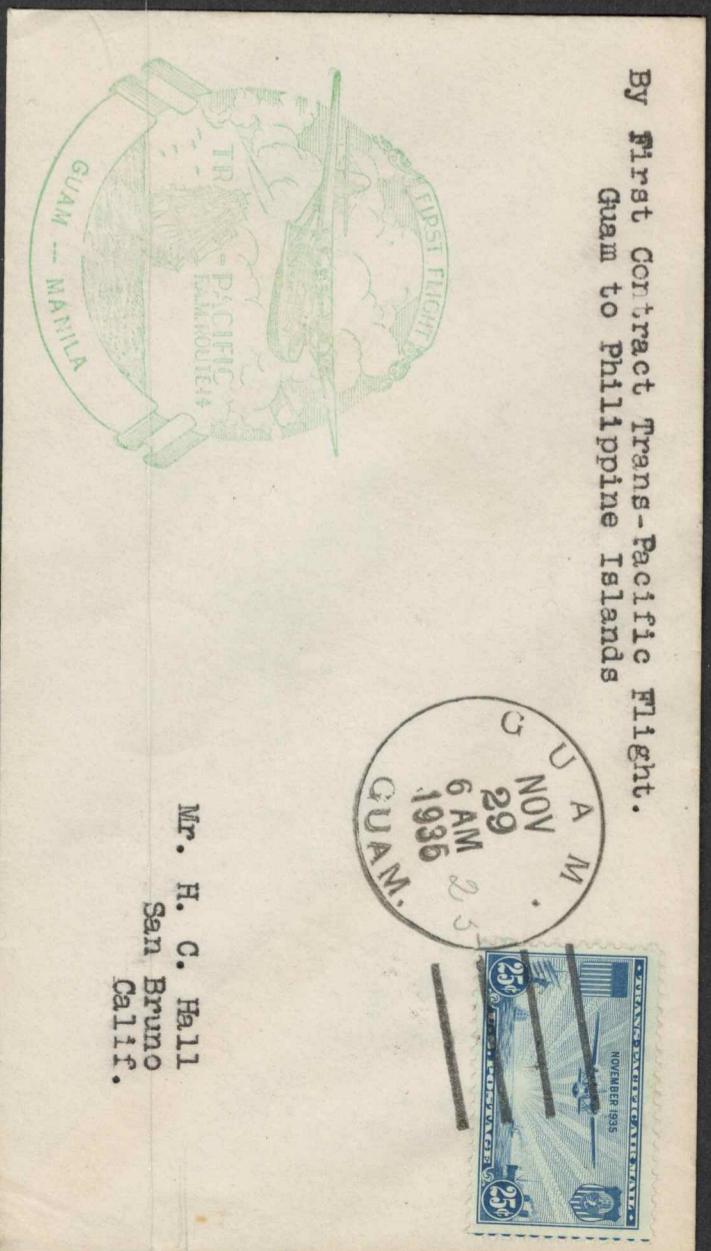
F14-3 Honolulu-San Francisco, December 5-6, 1935  
Magenta/Purple Cachet, 48,661 pieces



F14-4 Guam-Manila, November 29-29, 1935  
Green/Black Cachet, 5,700 pieces



F14-4 Guam-Manila, November 29-29, 2935  
Green/Black Cachet, 5,700 pieces



By First Contract Trans-Pacific Flight.  
Guam to Philippine Islands

Mr. H. C. Hall  
San Bruno  
Calif.



F14-4 Guam-Manila, November 29-29, 1935  
Green/Black Cachet, 5,700 pieces



F14-5 Guam-San Francisco, December 3-6, 1935  
Black Cachet, 6,476 pieces



F14-5 Guam-San Francisco, December 3-6, 1935  
Green Cachet, 6,476 pieces



F14-5a Guam-Honolulu, December 3-4, 1935  
Green/Black Cachet, 3,543 pieces



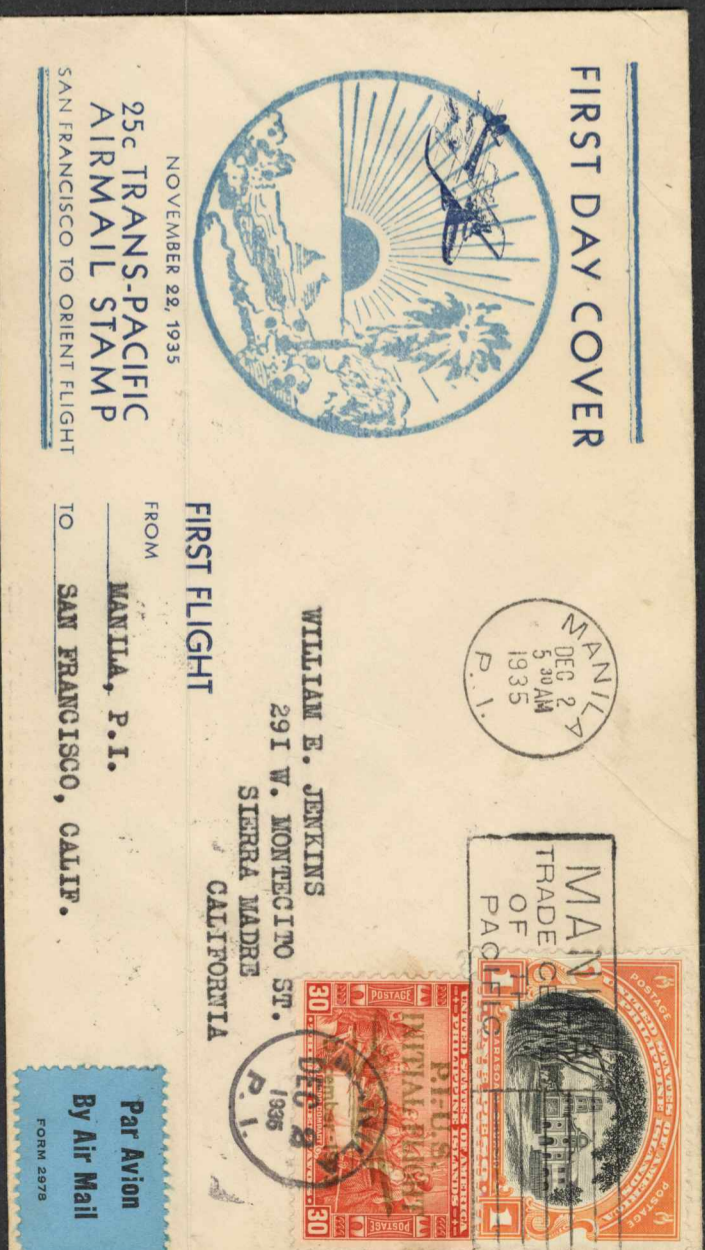


F14-5a Guam-Honolulu, December 3-4, 1935  
Green/Black Cachet, 3,543 pieces



F14-5a Guam-Honolulu, December 3-4, 1935  
Green/Black Cachet, 3,543 pieces

F14-6 Manila-San Francisco, December 2-6, 1935  
Black Cachet, 24,435 pieces



F14-6 Manila-San Francisco, December 2-6, 1935  
Black Cachet, 24,435 pieces



Mr. Harry Hall  
San Bruno  
Calif.



Dr. W. R. Todd  
UNIVERSITY OF OREGON  
MEDICAL SCHOOL  
PORTLAND  
NUTRITIONAL RESEARCH LABORATORY

Trans-Pacific Airmail  
First Day  
Philippines to United States

Dr. W. R. Todd  
Nutritional Research  
Laboratory  
U. of O. Medical School  
Portland, Oregon

Par Avion  
By Air Mail  
FORM 2976

Par Avion  
By Air Mail  
FORM 2976



F14-6a Manila-Guam, December 2-2, 1935  
Black Cachet, 4,808 pieces

F14-6b Manila-Honolulu, December 2-4, 1935  
Black Cachet, 4,273 pieces



F14-10 San Francisco-Hong Kong, April 21-28, 1937  
Blue Cachet, 31,377 pieces

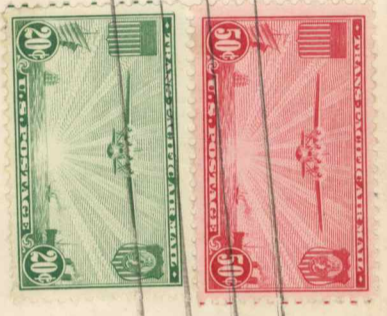
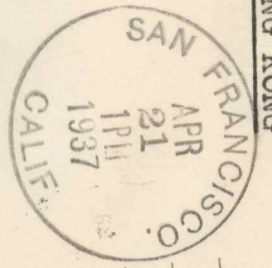
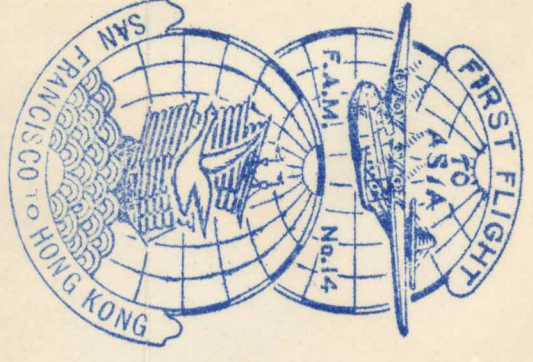
F14-10 San Francisco-Hong Kong, April 21-28, 1937  
Blue Cachet, 31,377 pieces





F14-10 San Francisco-Hong Kong, April 21-28, 1937  
Blue Cachet, 31,377 pieces

FIRST FLIGHT VIA PAN AMERICAN CLIPPER  
FAM 14 EXTENSION TO MACAO-HONG KONG  
FIRST FLIGHT SAN FRANCISCO-HONG KONG



Henry C. Hall,  
220 East Ave.  
San Bruno, Cal.

San Francisco to Hong Kong

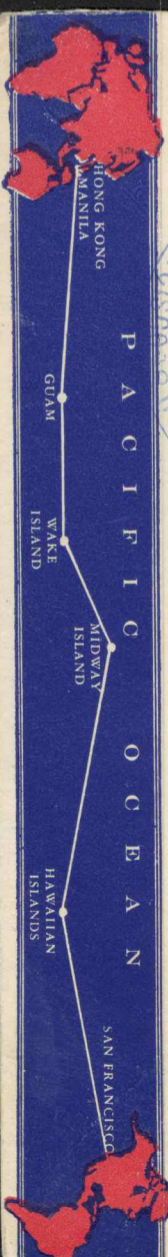
INAUGURATION  
of The U.S. AIR LINES  
PACIFIC SERVICE  
MAIL SERVICE  
to CHINA  
SAN FRANCISCO to HONG KONG

A. L. Webber  
c/o Barber Shop  
Merchandise Mart  
Chicago, Illinois

First Flight  
SAN FRANCISCO  
to HONG KONG



J. O. Marsh  
Cherry Street  
Rahway, N.J., U.S.A.



UNITED STATES  
TO  
MACAO

TRANS-PACIFIC AIR MAIL

MR. WM. H BRADFORD,  
695 HAXTUN AVENUE,  
ORANGE, NEW JERSEY.

MADE IN SWEDEN BY D. HANONER AB  
MADE IN SWEDEN BY D. HANONER AB  
MADE IN ENGLAND — HANONER — MADE IN ENGLAND — HANONER — MADE IN ENGLAND — HANONER — MADE IN ENGLAND — HANONER



F14-10a San Francisco-Macao, April 21-28, 1937  
Blue Cachet, 12,488 pieces



F14-10a San Francisco-Macao, April 21-28, 1937  
Blue Cachet, 12,488 pieces





F14-11 Honolulu-Hong Kong, April 23-28, 1937  
Magenta Cachet, 8,049 pieces



Henry C. Hall,  
220 East Ave.  
San Bruno, Cal.

F14-11a Honolulu-Macao, April 23-28, 1937  
Magenta Cachet, 5,853



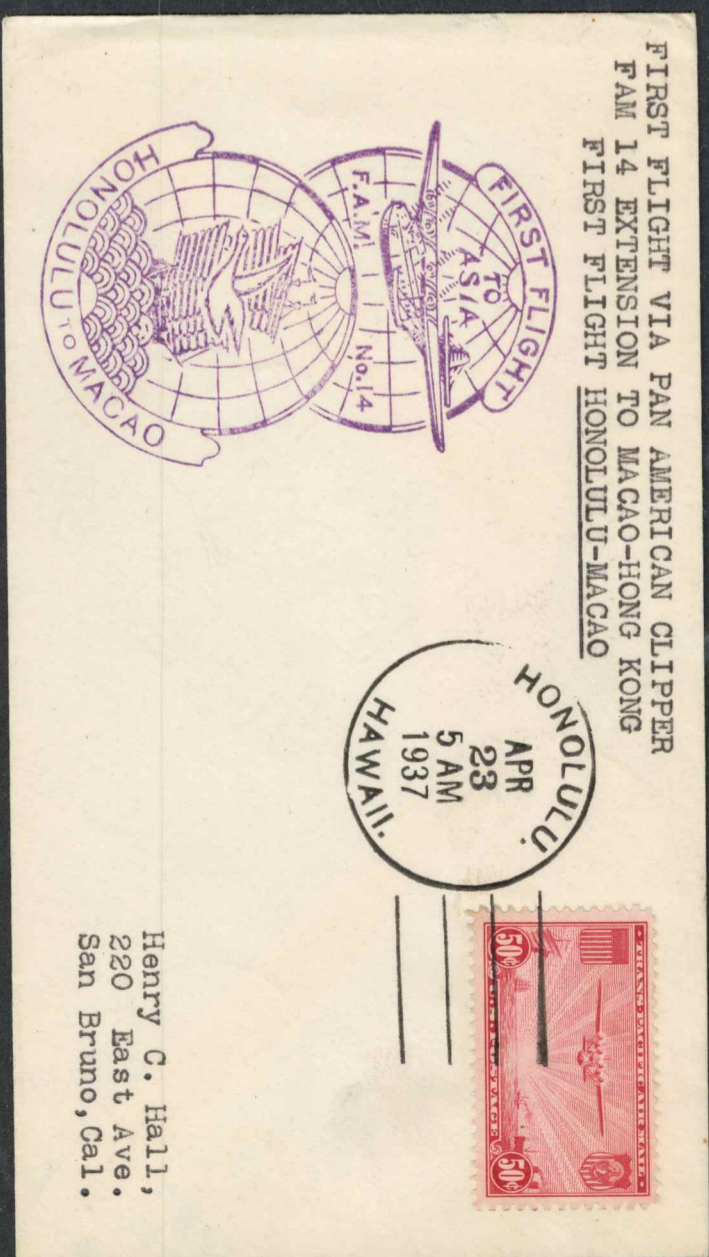
V. Feind  
280 So. 8th Street  
Newark, N.J., USA

F14-11a Honolulu-Macao, April 23-28, 1937  
Magenta Cachet, 5,853



Dr. M. Licheson  
First Hospital  
Sun Yet Sen University  
Canton, China  
Hawaii-Canton

F14-11a Honolulu-Macao, April 23-28, 1937  
Magenta Cachet, 5,853



Henry C. Hall,  
220 East Ave.  
San Bruno, Cal.



F14-xx Shanghai-San Francisco, April 26-May 4, 1937 (RARE)  
 Officially picked up in Hong Kong and on that leg of the flight becomes a F14-16. (see China note)



F14-xx Shanghai-Manila, April 26-29, 1937 (RARE)  
 Officially picked up in Hong Kong and on that leg of the flight becomes a F14-16a. (see China note)



F14-xx Shanghai-Guam, April 26-30, 1937 (RARE)  
 Officially picked up in Hong Kong and on that leg of the flight becomes a F14-16b. (see China note)



F14-XX Canton-Guam, April 26-30, 1937 (Rare)  
 Licheson Cachet, "R" # 6295





F14-xx Shanghai-Honolulu, April 26-May 2, 1937 (RARE)  
 Officially picked up in Hong Kong and on that leg of  
 the flight becomes a F14-16c. (see China note)



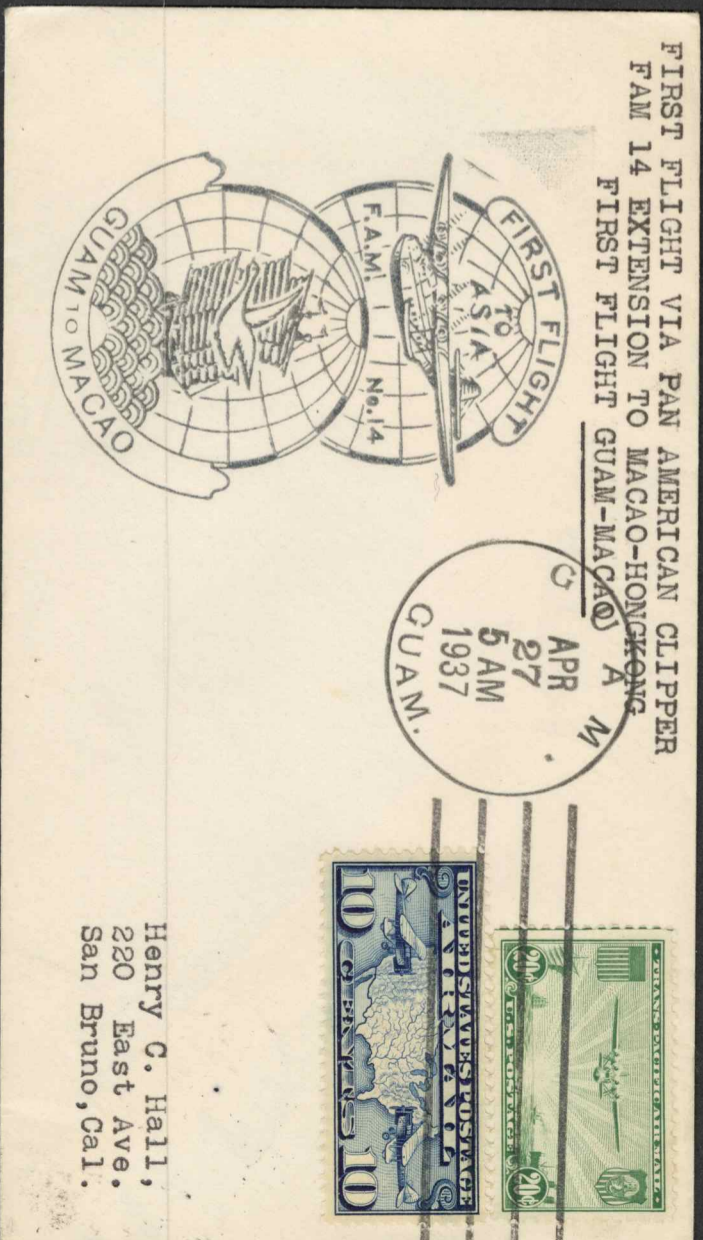
F14-XX Canton-Hawaii, April 26-May 2, 1937 (Rare)  
 Sage Letter, "R" # 5582



F14-12 Guam-Hong Kong, April 27-28, 1937  
 Black Cachet, 7,645 pieces



F14-12a Guam-Macao, April 27-28, 1937  
 Black Cachet, 7,023 pieces





F14-13 Manila-Hong Kong, April 28-28, 1937  
Purple Cachet, 15,576 pieces

FIRST FLIGHT VIA PAN AMERICAN CLIPPER  
FAM 14 EXTENSION TO MACAO-HONG KONG  
FIRST FLIGHT MANILA-HONG KONG



Henry C. Hall,  
220 East Ave.  
San Bruno, Cal.

F14-13a Manila-Macao, April 28-28, 1937  
Purple/Blue Cachet, 12,238 pieces

FIRST FLIGHT VIA PAN-AMERICAN CLIPPER  
FAM 14 EXTENSION TO MACAO-HONG KONG  
FIRST FLIGHT MANILA-MACAO



Henry C. Hall,  
220 East Ave.  
San Bruno, Cal.

F14-14 Macao-Hong Kong, April 28-28, 1937  
Purple Cachet, 9,547 pieces

FIRST FLIGHT VIA PAN AMERICAN CLIPPER  
FAM 14 EXTENSION TO MACAO-HONG KONG  
FIRST FLIGHT MACAO-HONG KONG



Henry C. Hall,  
200 East Ave.  
San Bruno, Cal.

FIRST THROUGH TRANS PACIFIC AIR MAIL FLIGHT  
HONGKONG—MACAO—U.S.A.  
BY PAN AMERICAN AIRWAYS "CLIPPER."



**MACAO to HONGKONG.**



K. M. WALSH ESQ.,  
3100, St. Paul Street,  
BALTIMORE, MD.,  
U. S. A.

COPYRIGHT RESERVED BY DAVILIS STAMP CO., HONGKONG.

















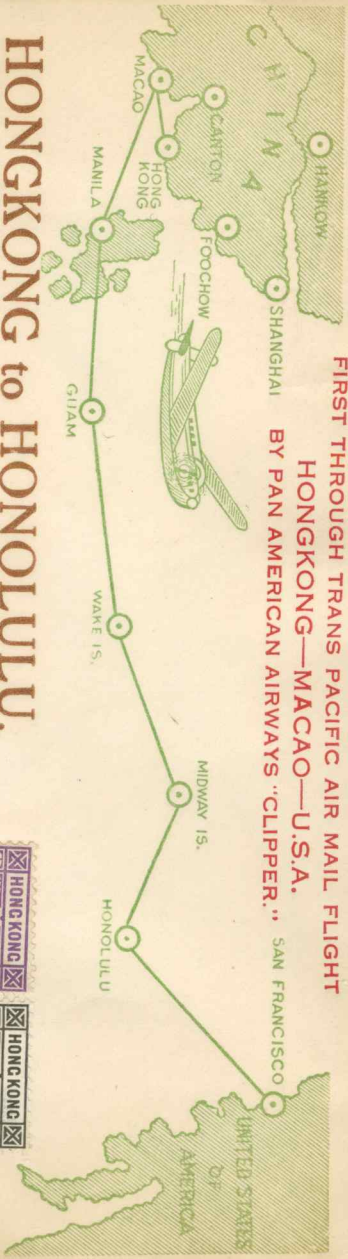










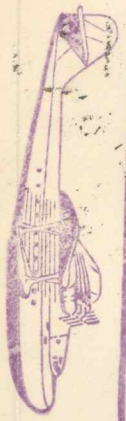


FIRST THROUGH TRANS PACIFIC AIR MAIL FLIGHT  
 HONGKONG—MACAO—U.S.A.  
 BY PAN AMERICAN AIRWAYS "CLIPPER." SAN FRANCISCO

**HONGKONG to HONOLULU.**

HONG KONG to HONOLULU

**BY AIR MAIL  
 PAR AVION**



RECEIVED-FIRST FLIGHT-F.A.M.14

COPYRIGHT RESERVED BY DAVIS STAMP CO., HONGKONG.



**K. M. WALSH ESQ.,**  
 3100, St. Paul Street,  
 BALTIMORE, MD.,  
 U. S. A.

Hong Kong To U. S.



Hold for First Clipper Flight

CUT IN WOOD BY TONNEL, GUNDEL.

HONG KONG to SAN FRANCISCO  
 HONG KONG to HONOLULU  
 HONG KONG to HONOLULU



By Air Mail - Trans-Pacific Route

Mr. Bill Weiss,  
 6752 Merrill Ave.,  
 Chicago, Illinois