

14B

14A



14C

14D



14E

14F



16A

16B

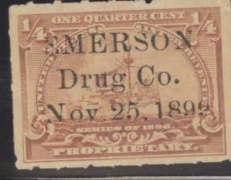
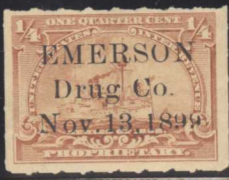


16C

16D



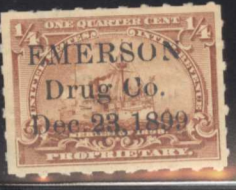
16E



16F



16G



#1



#2

23A



#4



#5

23B

23C

#3



#6



23D

23E

#7



#8

NOS. 12, 13, 14  
LEWIS MED. CO  
Ty 4a



#9



#10



#11



NOS. 15, 16, 17  
LEWIS MED. CO  
Ty 4b



47A

47B



48A



48B



48C

48D



8



48E

48F



14



48G

49A



49B

49C



60E



60D



60C



60B



60A



63A



63B



66A



66B



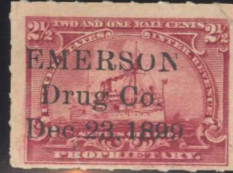
66C



67A



67B



67C



67D



67E



87A



87B



87C



87D



95



96A



96B



96C

96D



96E

103A



103B

103C



103D

103E



103F



103G



103H



103I

NOS 40-46  
FONT C



103J

NOS 47 &  
48  
FONT D



106A



106B



106C



106D



106E

