

POSTAL MEANS, RATES & MARKINGS

CARRIED BY MOUNTED RIDER
SINGLE "EXPRESS" RATE
EXPRESS MAIL



Charleston 12th September 1837

REGULATIONS FOR THE EXPRESS MAIL:

NO LETTERS WILL BE SENT BY THIS MAIL,
EXCEPT SUCH AS HAVE WRITTEN UPON THEM
THE WORDS "EXPRESS MAIL".

POSTAL MEANS, RATES & MARKINGS

CARRIED BY MOUNTED RIDER
SINGLE "EXPRESS" RATE
EXPRESS MAIL



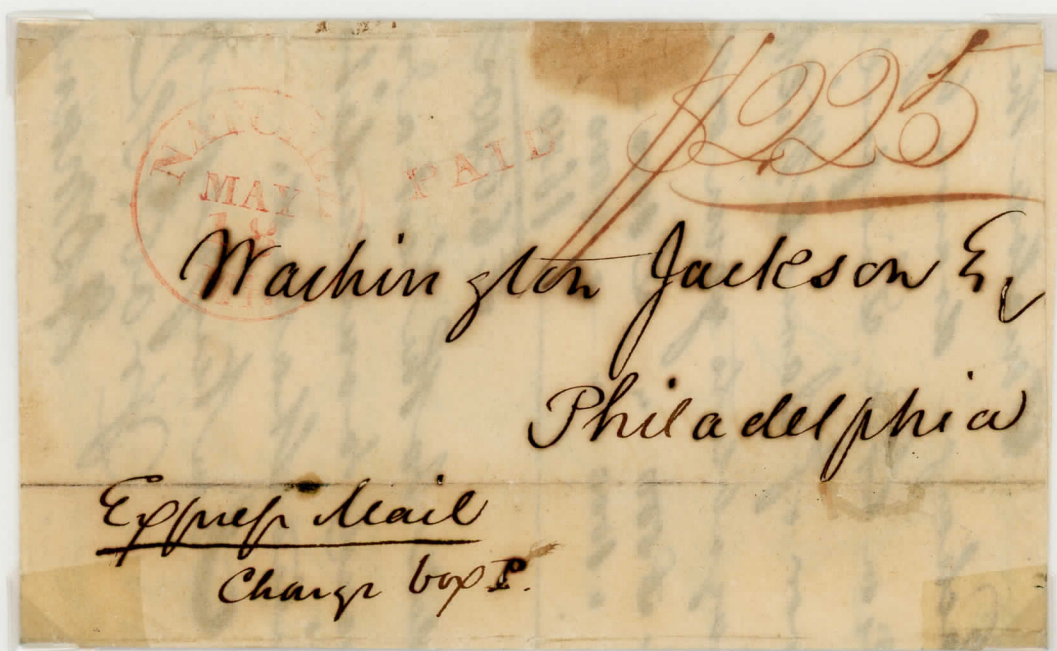
New York Nov. 15. 1837

BY EXPRESS MAIL FROM NEW YORK TO NEW ORLEANS
AND THEN BY RIVER BOAT ON TO VICKSBURG, MISS.

THE BULK OF THE NORTH TO SOUTH EXPRESS MAIL
WAS TO MOBILE, ALABAMA OR TO NEW ORLEANS.
EXPRESS MAIL TO VICKSBURG, MISSISSIPPI IS
QUITE SCARCE.

POSTAL MEANS, RATES & MARKINGS

CARRIED BY MOUNTED RIDER
TRIPLE "EXPRESS" RATE
EXPRESS MAIL



NATCHEZ, MISSISSIPPI, MAY 18, 1838
TRIPLE LETTER OVER 400 MILES \$2.25

THIS LETTER DID NOT ENTER THE EXPRESS UNTIL
MOBILE, ALABAMA. IT WAS EMPHASIZED IN THE
REGULATIONS THAT THE COMPLETE DISTANCE THAT A
LETTER TRAVELED, AND NOT THE DISTANCE OVER
AN EXPRESS ROUTE, WAS USED TO
COMPUTE THE RATE.

POSTAL MEANS, RATES & MARKINGS

CARRIED BY MOUNTED RIDER
SINGLE "EXPRESS" RATE
SAVANNAH, GA., EXPRESS MAIL



Savannah April 19 1831

THE CITIES ALONG THE SOUTHEASTERN COAST OF THE U.S.
FROM WHICH EXPRESS MAIL USEAGES HAVE BEEN RECORDED
ARE WILMINGTON, N.C., NEWBERN, N.C., CHARLESTON, S.
C., SAVANNAH, G.A. AND BRUNSWICK, GA.

POSTAL MEANS, RATES & MARKINGS

CARRIED BY MOUNTED RIDER
SINGLE "EXPRESS" RATE
EXPRESS MAIL

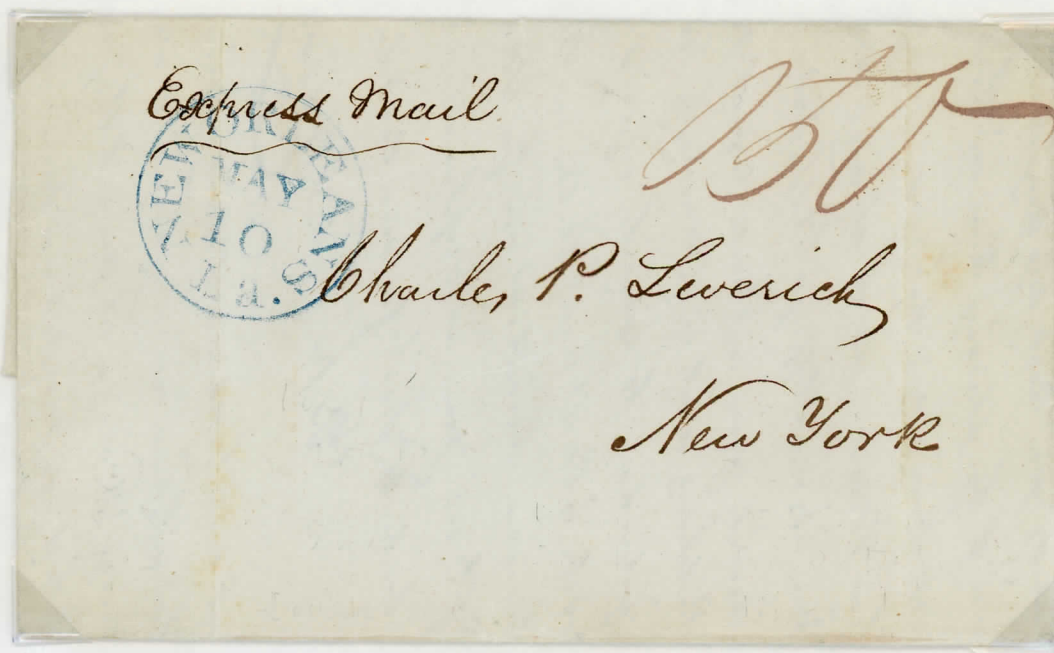


Charleston Dec^r 16. 1837

CHARLESTON, S.C., WAS THE ONLY CITY ON THE ATLANTIC SEABOARD WITH AN EXPRESS MAIL CONNECTION AS THE NEW YORK TO MOBILE ROUTE FOLLOWED AN INLAND COURSE. A BRANCH EXTENDED FROM COLUMBIA, S.C., TO CHARLESTON.

POSTAL MEANS, RATES & MARKINGS

CARRIED BY MOUNTED RIDER
DOUBLE "EXPRESS" RATE
EXPRESS MAIL



NEW ORLEANS, LA., MAY 10, 1837
NEW YORK, N.Y., MAY 19, 1837
DOUBLE LETTER OVER 400 MILES \$1,50

EXPRESS MAIL FROM NEW ORLEANS TO NEW YORK
CITY TRAVELED BY SHIP TO MOBILE WHERE
THE "PONY" TOOK OVER.

POSTAL MEANS, RATES & MARKINGS

CARRIED BY MOUNTED RIDER
RATED TRIPLE "EXPRESS" RATE
EXPRESS MAIL

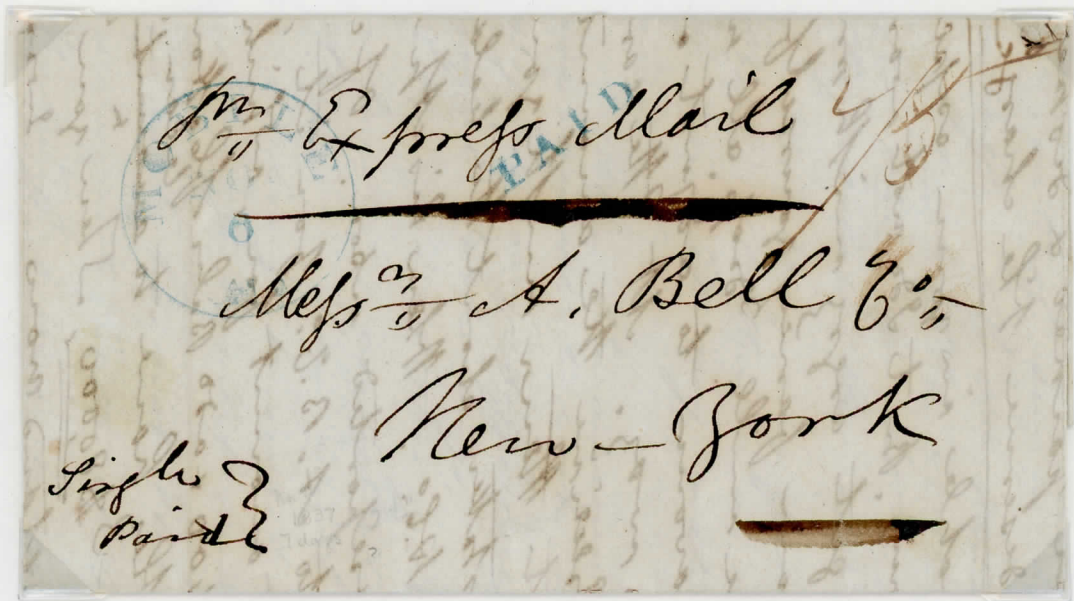


NEW ORLEANS, LA., JUL 2, 1837
NEW YORK, N.Y., JUL 10, 1837
TRIPLE LETTER OVER 400 MILES \$2.25

BY "PONY" FROM MOBILE TO NEW YORK CITY.
THE 164 MILES FROM NEW ORLEANS TO MOBILE BY SHIP
ADDED 1 FULL DAY TO THE TRANSIT TIME.

POSTAL MEANS, RATES & MARKINGS

CARRIED BY MOUNTED RIDER
SINGLE "EXPRESS" RATE
EXPRESS MAIL



MOBILE, ALABAMA, NOV 6, 1837
NEW YORK, N.Y. NOV 13, 1837

THE SCHEDULED TIME FOR ORDINARY MAIL WAS
12 DAYS, 23 HOURS FROM MOBILE TO NEW YORK.
THE EXPRESS MAIL SCHEDULE WAS 5 DAYS AND
23 HOURS FOR THE SAME SERVICE.

POSTAL MEANS, RATES & MARKINGS

CARRIED BY MOUNTED RIDER
QUADRUPLE "EXPRESS" RATE
EXPRESS MAIL



MOBILE, ALABAMA, APR 12, 1837
NEW YORK, N.Y., APR 19, 1837
QUADRUPLE LETTER OVER 400 MILES, \$3.00

IT WAS CLEARLY DEFINED IN THE ACT OF CONGRESS THAT
AUTHORIZED THE EXPRESS THAT TRIPLE THE ORDINARY
POSTAGE RATES WERE TO BE LEVELED ON THESE LETTERS.



Buy Sell My eBay Community Help

Site Map

All Categories Search Advanced Search

Categories Motors Stores Deals



Back to home page Listed in category: Stamps > United States > Covers > Postal History

Stampless Eastern Pony Express Scarce NY Origin & Rate

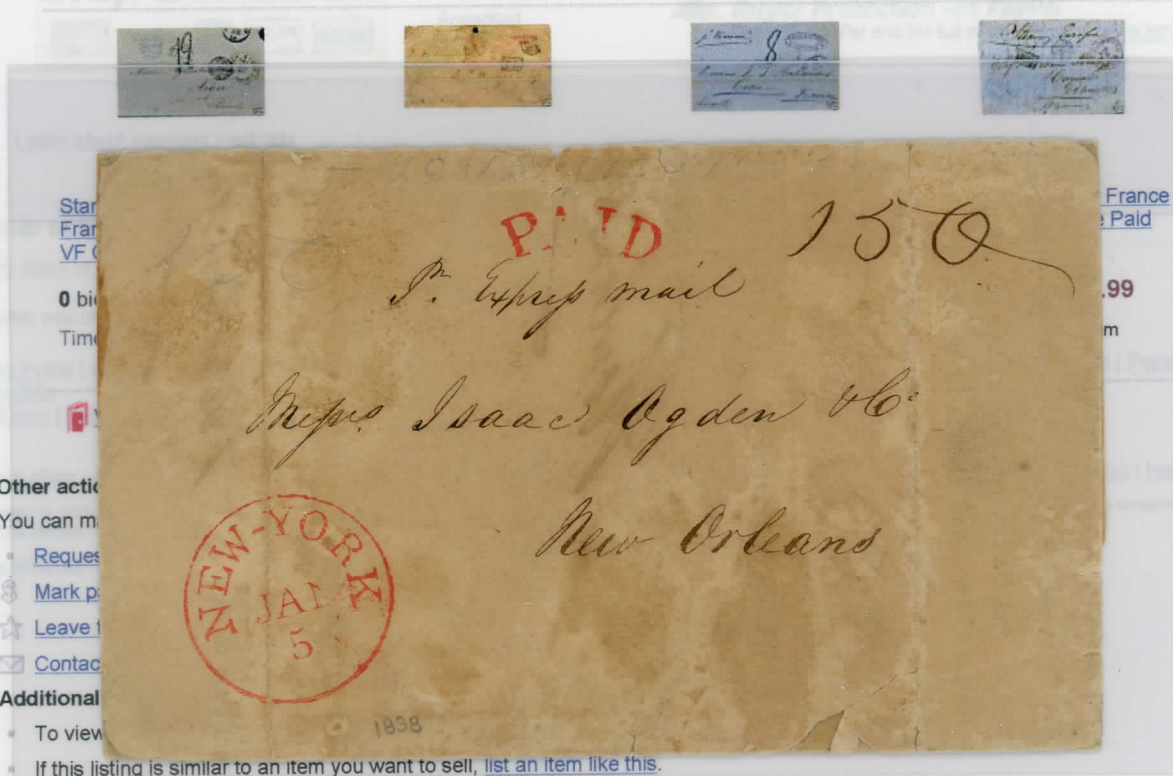
Item number: 300301657131

Congrats, you just bought this item.

Pay Now > or visit seller's store

Click the Pay Now button to confirm shipping, get the total price, and arrange payment through: PayPal.

Find more items from the same seller. Bid or Buy Now!



Other actions

You can manage this listing

Request a quote

Mark as favorite

Leave feedback

Contact seller

Additional actions

To view this item

If this listing is similar to an item you want to sell, [list an item like this](#).

You may [add this seller](#) to your Favorite Sellers in My eBay.



Winning bid: **US \$129.15**

Ended: **Mar-26-09 10:01:02 PDT**

Shipping: **US \$2.00**
US Postal Service First Class Mail®
Service to [United States](#) ([more services](#))

Ships to: **Worldwide**

Item location: **Columbus, OH, United States**

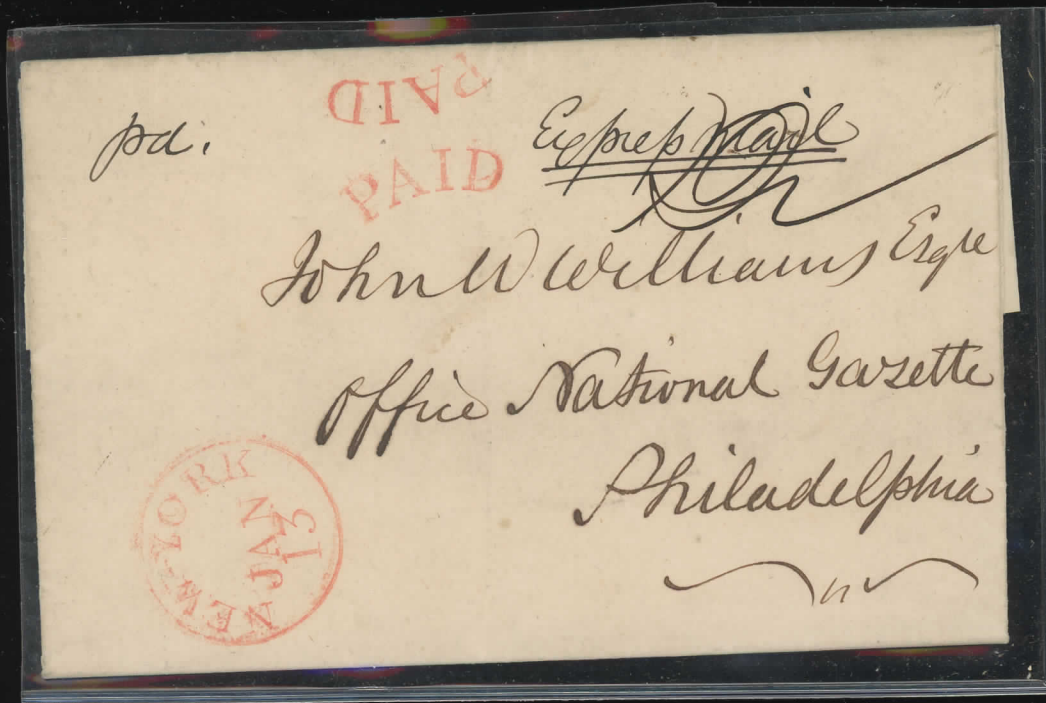
Meet the seller

Seller: [mikeemc](#) (1099 ★)

Feedback: **100 % Positive**

Member: since Aug-23-98 in United States

- See detailed feedback
- Ask seller a question
- Add to Favorite Sellers
- View seller's other items: [Store](#) | [List](#)
- Visit seller's Store: [mikeemc](#)



NYC-PHILA. EXPRESS MAIL
Because regular trains ran between NYC and Phila. there never was an express mail. This Jan. 12 1837 writer Sam Ward Jr. didn't know and tried to prepaid express mail as

noted in mspt. "express mail" and "pd" but did not pay the 37-1/2 as the express triple rate required as it was unnecessary. Thus a double struck red PAID and red 27mm NEW-YORK/JAN/13 and mspt. 12-1/2¢ single rate.