

There were two townmarks in use One a circular 28mm with Honolulu above, Hawaiian Islands below, both serified. The other was 35mm with Honolulu serified, but Hawaiian Islands non-serified, Both had day and month in centre, but no year. The first was struck in red, the second in red until about 1867, after that it occurs in black.

During the early years Mr Whitney the Postmaster arranged to keep on hand a supply of United States stamps, for the purpose of paying the United States portion of the postage.

TYPE 243
EARLY USE IN
COLLECT FOREIGN
MAIL 1857-73
1857 Red
1867 Black



Letters H I in solid circle used at Honolulu

16mm 1869



23mm 1872



18mm about 1883



HANDCUT H

1871-2

1st H-14
IR

Paid in double lined oval usually blue Iahaina



Registered

Postmarks

Grids

There are many types of handmade grids, mostly circular, but a few examples of both square and ovals grids are found.

Oval

Square



Circular



FISCAL

HAWAII

Circles cancellations



134 Honolulu
1871-75

HAWAII

Postmarks

II5 & II6

Target of 3 circles 21mm and centre pins, the two outer circles each divided into 4 segments. The pins punched pieces out of stamps and envelopes. After a year the device was altered by shortening the pins so that they printed as tiny circles.
Black, Honolulu 1876, altered 1877-94. Scarce in original state, common in altered.



Target of 3 circles each divided into many segments, 23mm, black. Honolulu 1876-83

II7



Grossroads
63
Fairly
Scarce

Island of Hawaii



PAPUHO



MAHUKONA



very scarce
Kawaihae
Group 1
244



238
Group 2
POST OFFICE

KAWAIHAE

1-HP-20
IRRR

Two types of Hilo Island of Hawaii



242
Group 3
Letter
22
with
Honolulu 16
on top



KAWAIHAE was the first point of land touched by the missionaries in 1820

THE HAWAIIAN ISLANDS
TOUCHED BY THE MISSIONARIES

Island of Hawaii



KAILUA



HILO



HILO

Scanned
9/16/3 235

HOLUOLOA



MAHUKONA



KEALAKEKUA



1896

Official stamps
Recess printed A.B.N.Co., N.Y.
Secretary L.A.Thurston
Department of Foreign Affairs.

P.12



Island of Hawaii



PAPAALOHA



1900 APR 13 1900 IRR

Island of Hawaii. Local post offices.



Source 291



WAIOHINA



PAPAALOHA



HILO



MAHUKONA



HILO

Island of Hawaii



KAWAIHAE



42
LAUPAHOEHOE



PAAULO



MAHUKONA



KAWAIHAE



KEALAKEKUA



LAUPAHOEHOE



MAHUKONA



KEALAKEKUA



PAAULO

Postmarks of the Island of Kauai.



KILAUEA



KOLOA



KOLOA



ELEELE



ELEELE



MAKAWELL



MAKAWELL

LIAUE



KOLOA



LIAUE



HONOLULU



KOLOA



Registered mark of Lihue on island of Kauai.

REGISTERED.



MR. TH

McBRYDE SUGAR CO.,

HONOLULU.



KEKAHA

Local
pink.



Mrs L. R. Walker
Honolulu

Island of Maui



WAILUKU



MAKAWAO

HAHAKUPOKE



KIPAHULU

Island of Oahu

Waialua



Honolulu 3 circles
broken into segments
Nov 17 P.M.



NAINAE



Mr. Thomas Rau Walker

Kulaokahua

WAIALUA

Island of Oahu.

Duplex marks of Honolulu nos 1 & 2.



Honolulu
H.S.



KAPUKAHA. KAMALO. KAUNAAKAKAI. PUKOO.



Only KEOMUKU

Paquebot marks



*The Grand Hotel
Trafalgar Square
London W.*

*Mrs. J. A. ...
Leicester Street
Southport,
England*

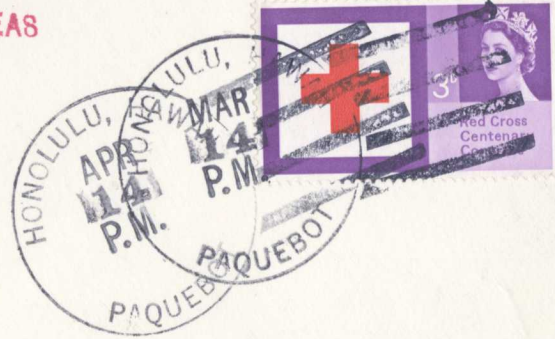
Ms. Jan 31/01

*SAINT-PAUL
HAWAIIAN ISLANDS POSTAGE
5*

*SAINT-PAUL
HAWAIIAN ISLANDS POSTAGE
5*



POSTED ON THE HIGH SEAS
R.M.S. "CARONIA"



*R. M. Hoshing &
Bridges House
Virginia Water
Surrey
ENGLAND*

(3)

Letter from Honolulu per S.S. Paul to San Francisco. with
paid Liverpool U.S. Packet. 1878.



STAMP
REMOVED

Interisland mail per S.S. Kinau

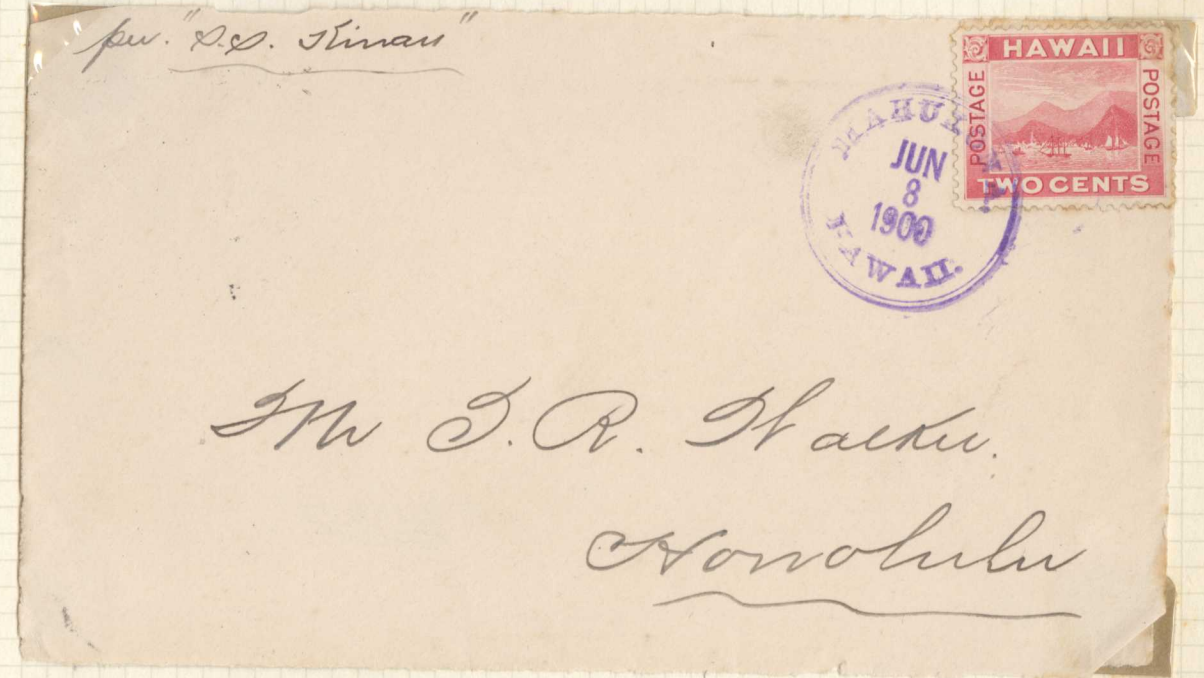


MAHUKONA

Honolulu to England. With San Francisco "SHIP"



STAMP
REMOVED

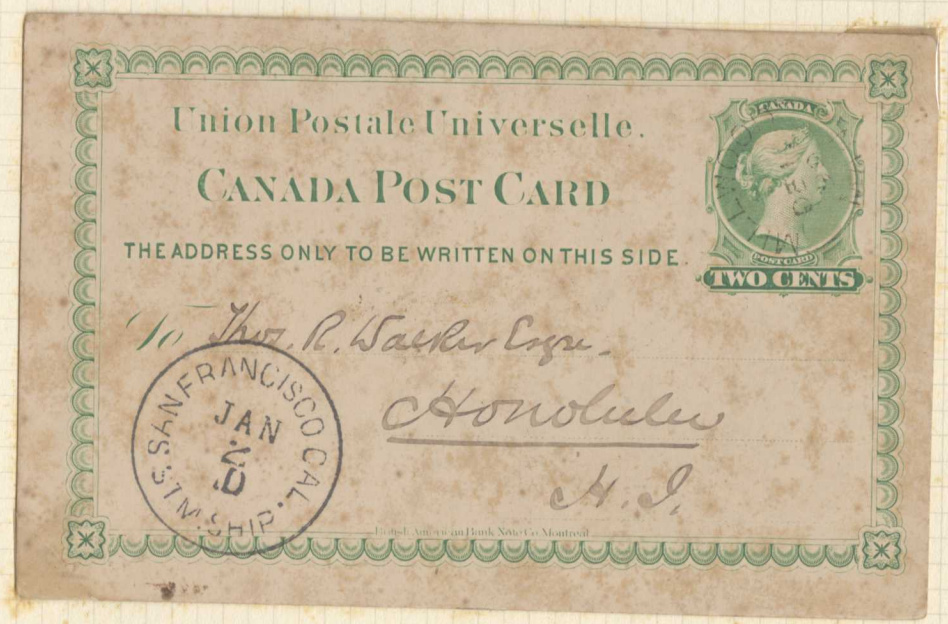


KOHALA

1892 Post card from Paauilo, Honolulu transit mark & San Francisco Stm Sh. in red.



Card from Canada to Honolulu, showing San Francisco Stm ship in black



Honolulu to England. San Francisco Aug 8th arrived Plymouth Aug 26th



1886 Engraved by an engraver in Little New St. London. for one Jefferys. In court the engraver pleaded innocence of any intent to help produce fake stamps; he thought it was a religious label. The designs measure 27 X 30 $\frac{1}{2}$ mm. values 2 & 5 dollars.

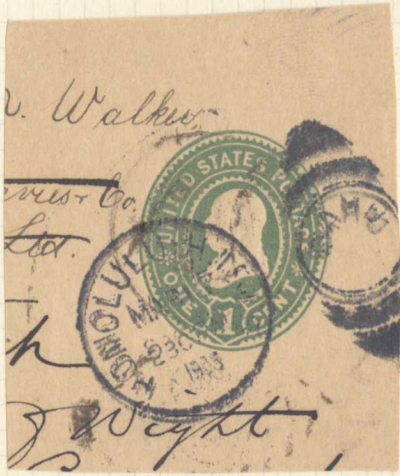


U.S.A. +stamps precancelled Hawaii





J R Walker -
per Ward.



M. F. PROSSER,
ATTORNEY AT LAW,
LIHUE, KAUAI, H. I.



Hon. T.R. Walker

British Consul

Honolulu, Oahu.