

Central Pacific Railway Post Office Clerk's CDS

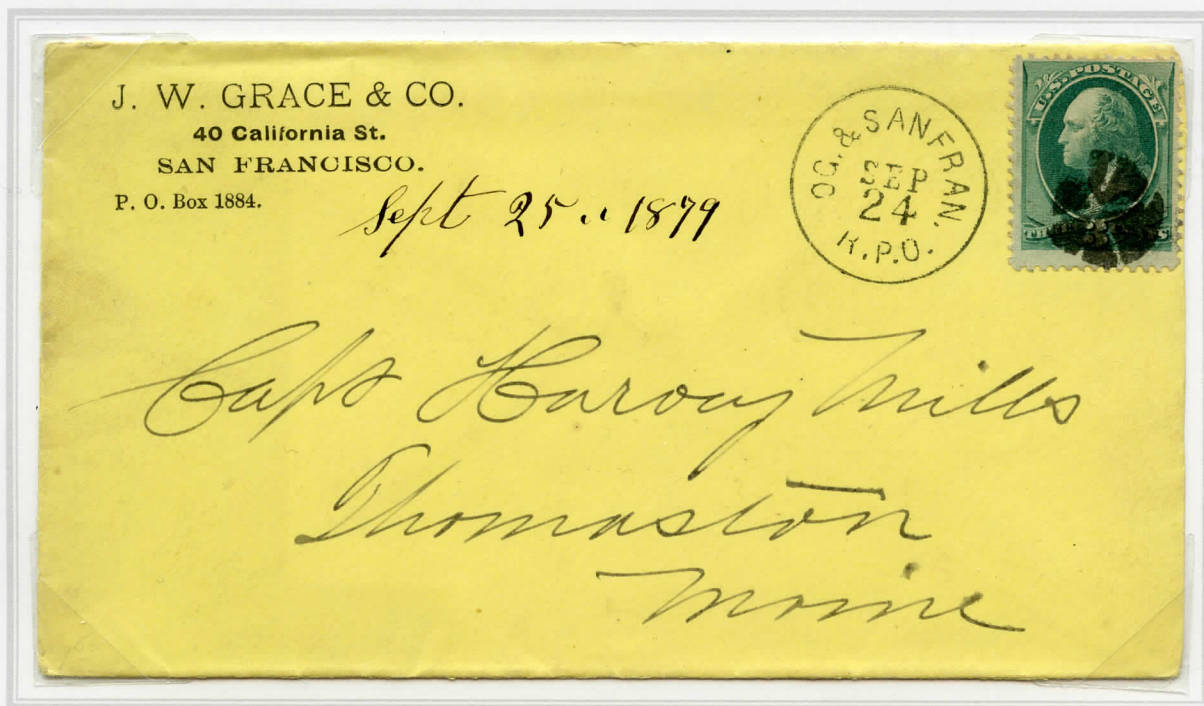
Central Pacific Railroad. Route 46001 of 877½ miles once daily. Contract value \$204,458 a year.

Central Pacific Railroad. Route 46001 of 884½ miles once daily. Contract value \$317,131 a year.



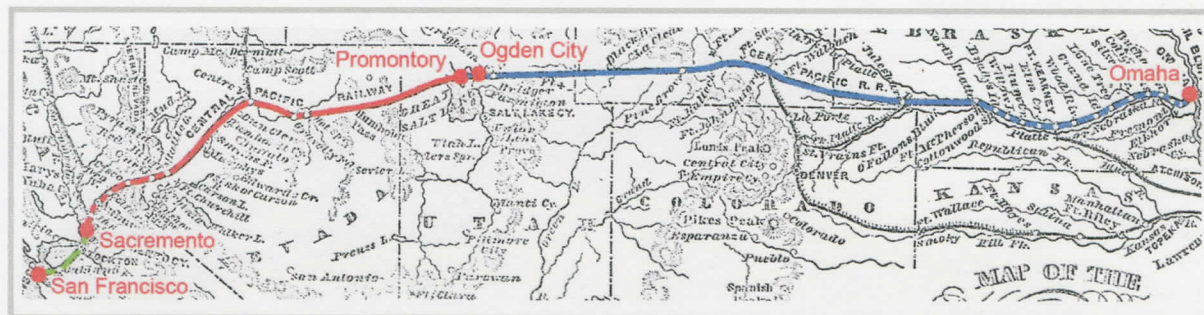
CENT PACIFIC R.R.
DEC / 17

Envelope file noted
"Nov 3^d 1875" carried
west on Route 46001 to
Sacramento.



OG. & SAN FRAN. R.P.O. / SEP / 24

Corner card envelope put onto Route 46001 at San Francisco on September 24th 1879 to receive the RPO clerk's CDS for his San Francisco to Ogden portion of the route east.



Map by Appleton of 1869 Key — Central Pacific R.R. — Union Pacific R.R.

The Union Pacific Connection Via Omaha to Chicago

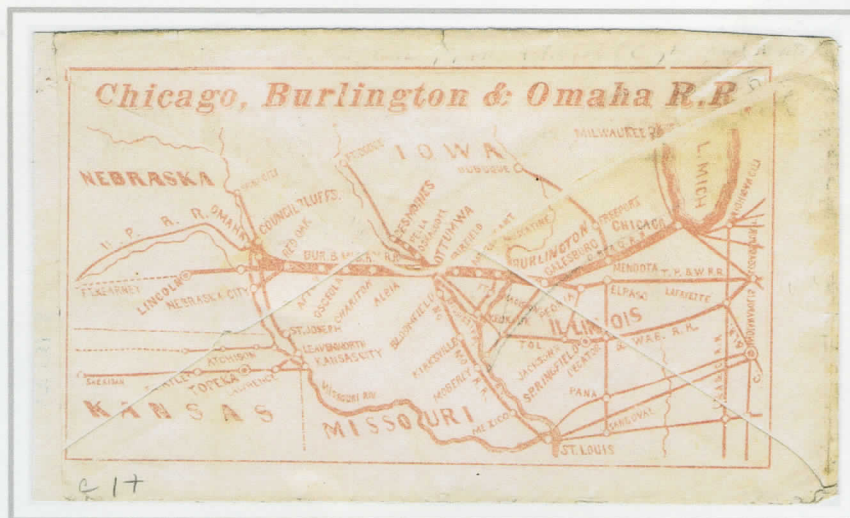
Mid West rail road companies were quick to pick up the advantages of their connection with those roads going west from the Missouri River. The advertising envelope of the Chicago, Burlington & Omaha with a through route to the Union Pacific at Omaha is an illustration of this.

The envelope, although lacking any arrival date information, was probably bagged for the through route by rail road to Omaha for transfer at Council Bluffs for Chicago and the east.



Corner card envelope posted on May 7th 1870 at San Francisco addressed to Emery Post Office, Virginia and franked with the 3 cent 1869 pictorial issue.

Bagged for Chicago and carried east on Route 14870 of the California Pacific, Route 14834 of the Central Pacific and 14451 of the Union Pacific Rail Roads to Omaha.



Reproduction of the reverse of the envelope reduced to 75% showing the route of the Chicago, Burlington & Omaha Rail Road between Chicago and Omaha.

Butterfields Overland Mail Before May 1869

The first overland mail contract from San Francisco to St. Louis of 2,800 miles commenced in September 1858 with Butterfields Overland Mail Co at \$600,000 a year. The schedule gave 24 days for the journey.



Per Overland Mail, via Los Angeles

Corner card envelope instructing carriage via Butterfield's contract. A number of printers produced these with a steam train image promoting a speedier service by railroad.

Total transit between Napa and Denary, IL was 34 days.

One of three example from this Napa City printer known.

Central Pacific Railroad Route Agent's CDS

Central Pacific Railroad. Route 14834 of 742½ miles twice daily. Contract value \$193,125 a year.



CENT PACIFIC R.R. / DEC / 17

Nesbitt Die 26 envelope carried on Route 14834 eastward to Promontory on December 17th 1869. Transferred to the Union Pacific R.R. for Ogden, St. Joseph and the east.

If not delivered within 10 days, to be returned to

Caro Mr. Buyer
and Dec. 26/69

PAID
Wells Fargo & Co.
OVER OUR CALIFORNIA AND COAST ROUTES



Genl J. W. Demer
Washington
D. C.



Mrs. Anna L. Grover

Denver

P.O. Box # 94.

Colorado