



MANILA No. 2  
SEP 30 1942  
PHILIPPINES

MANILA  
SEP 30  
1942  
12 30PM  
P. I.

POST  
YOUR MAIL  
EARLY



RETURNED TO SENDER FOR  
POSTAGE DUE 3  
POSTAGE PAID

大日本憲兵隊  
検閲済  
Manila Police

Mr. Severino N. Luna  
120 San Marcelino, Manila

FABRICA, OCC. NEGROS  
OCT 20  
1130AM  
1944  
PHILIPPINES



軍事郵便



敵國  
收容  
所  
長  
印

Dr. Gilbert S. Perez  
Department of Instructions  
Manila

きかは便郵

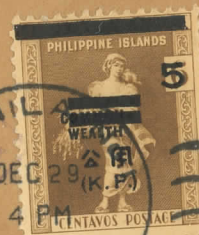
Republic of the Philippines  
COMMONWEALTH OF THE PHILIPPINES  
MINISTRY OF EDUCATION  
DEPARTMENT OF HEALTH AND PUBLIC WELFARE

**BUREAU OF HEALTH**  
MANILA

OFFICIAL MAIL

SAN LAZARO HOSPITAL

Dr. José Albert  
Head, Dept. of Pediatrics  
Phil. Gen. Hospital  
Manila



K.P.Nash QM3C 873-47-79  
U.S.S.L.C.I.228 F.P.O.  
San Francisco, Calif.



K.P.Nash QM3C 873-47-79

U.S.S.L.C.I.228

F.P.O.San Francisco, Calif.

OFFERED BY

NO. 100



Handwritten Japanese text: 黒田大郎 (Kuroda Daichiro)

Handwritten Japanese text: 少島派遣 (Shoima-haishen)

軍事郵便 (Military Mail)



Handwritten Japanese text: 櫻井 (Sakurai)



雄偉 (Yūei)

たがは便郵 (Military Mail)

JAPANESE P.O.W. in PHILIPPINES

DEC. 1945 5 SA. RATE  
To. I-10612 SOUTHERN No. 12 ARMY HOSPITAL  
FIVE OCCUPATION CENTER.

Handwritten Japanese text: 比良山 (Hirayama)



軍事郵便 (Military Mail)

海關檢 (Customs Check)

Handwritten Japanese text: 櫻井 (Sakurai)

敬啟者 (Respected Sir/Madam)

たがは便郵 (Military Mail)

Handwritten Japanese text: 櫻井 (Sakurai)



軍事郵便



平野隊

比島派遣隊九八五部隊

西田 技

まがは便郵

JAPAN WWII Military postcard PHILIPPINES used

See scans of front & reverse. Japanese Military Gunji Yubin card sent from the HITO dispatch, NATSU 9852 force, HIRANO party to Japan. Passed by Military Censor marked. small fault.



檳城縣真壁郡長屋町在  
傳正寄 尹忠



まがは便郵



尹忠 様

気付 西村隊

比島派遣隊一五九七部隊

bacco Rev



郵便 郵便

三 四 打

比島派遣隊九八五部隊

海兵名司 掃

まがは便郵

JAPANESE SOLDIERS card w.w.II.

Return address

PHILIPPINES EXPEDITIONARY FORCE  
UNIT 9850

To Japan, time cond. v. scarce R40

郵便 郵便



昭和八年九月廿日

和久田 哲 拜

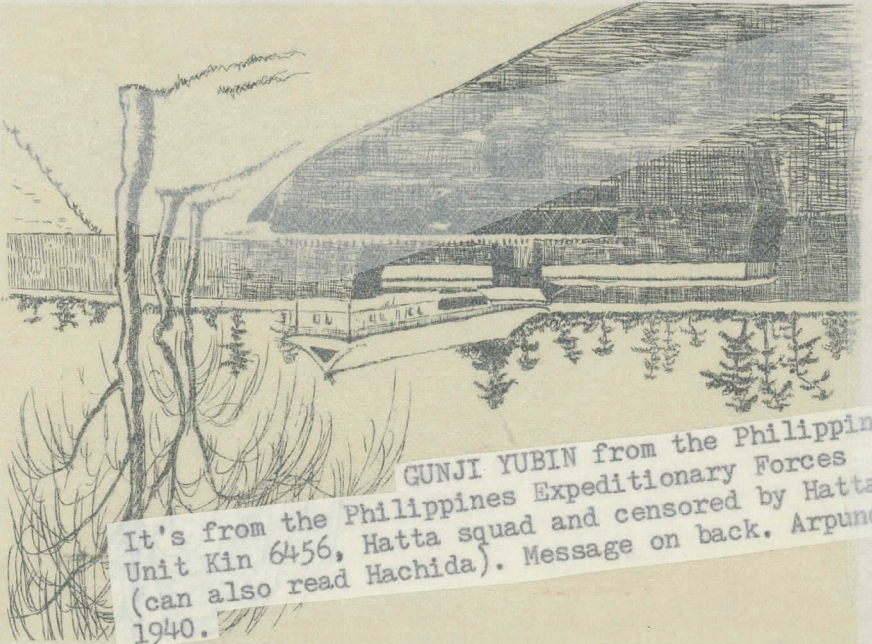
比島遺囑六六部隊佐藤隊

内田 公雄 様

きかは郵便

静岡県濱石川  
雄踏町洋布見の山

静 岡 県 濱 石 川



雄 踏 町 洋 布 見 の 山

GUNJI YUBIN from the Philippines.  
It's from the Philippines Expeditionary Forces  
Unit Kin 6456, Hatta squad and censored by Hatta  
(can also read Hachida). Message on back. Arpund  
1940.

きかは郵便

日本 静岡県志那郡身村小

坂本正巳 殿

比島遺囑六六部隊佐藤隊

坂本 卓平



軍事郵便



RETURN AFTER FIVE DAYS TO  
SEARS, ROEBUCK AND CO.  
217 WEST BROUGHTON ST.,  
SAVANNAH, GA.

E10932

FORWARD - Address Changed  
By Official Orders



RETURNED TO SENDER  
SERVICE SUSPENDED.  
NOT IN 3D EDITIONS OR  
JUN 21 1942



PLUM

c/o POSTMASTER,  
San Francisco, California