

P.O. Box 4547
Danbury, CT 06813

PHONE: 203-792-3862

FAX: 203-798-7902

E-MAIL: info@nutmegstamp.com

WEB: www.nutmegstamp.com

GM

A Greg Manning Company

AA890L

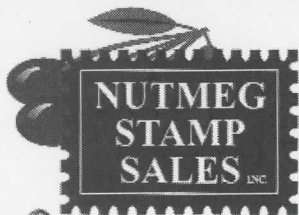
947887

28

114-02060-002060

DL
10836 Louisiana © D6 EF, 1880, "LAW STAMP", perf
12, 2 dollar 50 cent maroon, punch cnl, w/ partial imprint
"AMERICAN BANK NOTE" at top (color PH)...\$50





P.O. Box 4547
Danbury, CT 06813

PHONE: 203-792-3862

FAX: 203-798-7902

E-MAIL: info@nutmegstamp.com

WEB: www.nutmegstamp.com

nrz

AA890M

947944

34

114-02060-002060

10858 Maryland © D5b EF, nib perfs, 1937,
"RECORDATION TAX", perf 11-3/4, 2 dollar orange
brown shade, h/s cnls ...\$60

GM

A Greg Manning Company





P.O. Box 4547
Danbury, CT 06813

PHONE: 203-792-3862

FAX: 203-798-7902

E-MAIL: info@nutmegstamp.com

WEB: www.nutmegstamp.com

AA890M

909822

34

148-02060-002060

B5
53107

Minnesota © B5 VF, 1934 "FERMENTED LIQUOR / MORE THAN 3.3%" 25-cent black on yellow large 70mm x 52mm decal surfaced stamp w/ perforin cnl reading "P. B. Co. /-2-10-34", imperf, Schmahll-Arundel sigs, very scarce and fragile beer stamp fine used condition, only 2 in Hubbard Collection of which this is the finest example (PH)...\$60





**NUTMEG
STAMP
SALES**

P.O. Box 4547
Danbury, CT 06813

PHONE: 203-792-3862

FAX: 203-798-7902

E-MAIL: info@nutmegstamp.com

WEB: www.nutmegstamp.com

AA890M

909867

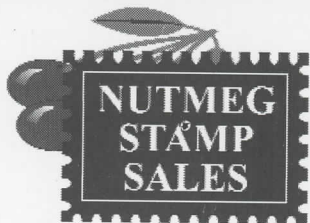
100-02060-

23996

Minnesota © B29var VF, unlisted var w/ color lines on reverse, 1934-36

"FERMENTED MALT BEVERAGE / OVER 3.2%" .14516 black on salmon pink w/ vertical background lines of color on front and reverse sides of decal surface case stamp and w/ diagonal printed cml reading "CANCELLED / No. 24" in large bold black print, perf 12, Schmahl-Ardundel sigs, very scarce stamp in exceptionally nice used condition w/ a great printed cml, only 2 in Hubbard Collection of which this is the finest example (PH)...\$50





P.O. Box 4547
Danbury, CT 06813

PHONE: 203-792-3862

FAX: 203-798-7902

E-MAIL: info@nutmegstamp.com



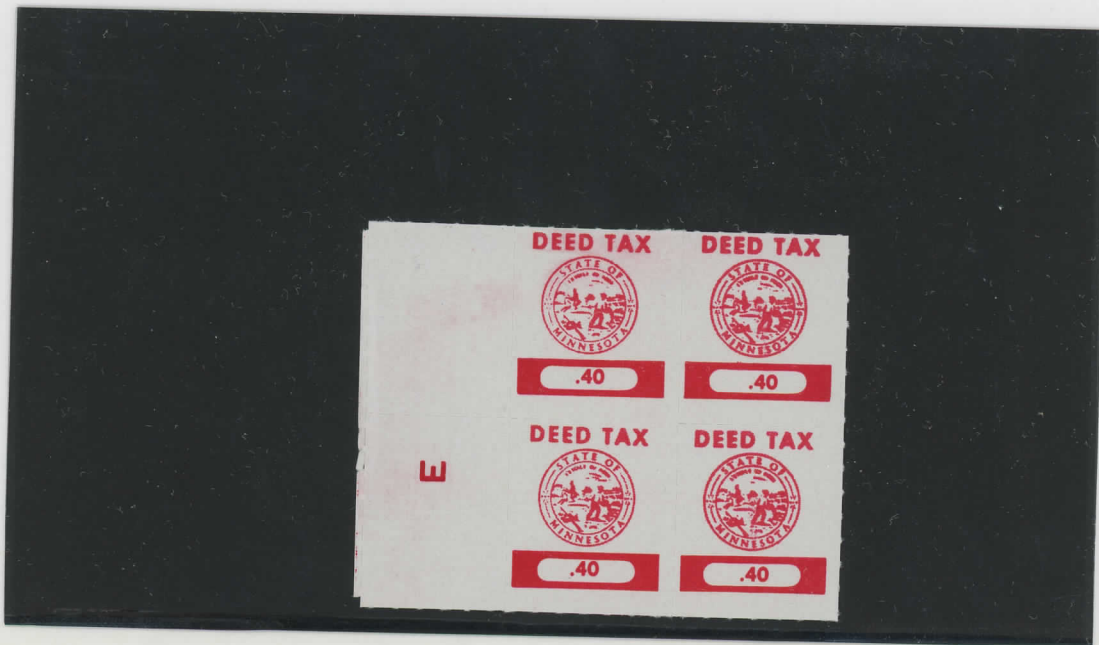
WEB: www.nutmegstamp.com

AA890M

945590

114-02060-002060

10909 *Minnesota a ★★ D46var VF, NH, 1980? "DEED TAX", .40 red w/ "fat zeros" and w/ state seal in center and value in panel below in blk/4 w/ intact L selvedge containing red letter "E" and ghost sheet numbers (no inking and only on inner ed numerical impression), roul 6-1/2, nice MNH example of interesting printing var (PH)...\$75*





**NUTMEG
STAMP
SALES**

P.O. Box 4547
Danbury, CT 06813

PHONE: 203-792-3862

FAX: 203-798-7902

E-MAIL: info@nutmegstamp.com

WEB: www.nutmegstamp.com



AA890M

946212

29

114-02060-002060

11044 *Montana* ★★ **PB1-PB3** VF, NH, 1947, "USE TAX STAMP", group of three stamps incl 3 cent carmine (PB1), 15 cent blue (PB2), and 30 cent green (PB3), all on yellowish paper, perf 12-1/2, pristine uncommon MNH low value first issue punchboard stamps, difficult to find in this condition (PH)...\$46





P.O. Box 4547
Danbury, CT 06813

PHONE: 203-792-3862

FAX: 203-798-7902

E-MAIL: info@nutmegstamp.com

WEB: www.nutmegstamp.com

AA890M

946222

26

114-02060-002060

11051 *Montana* ★★ **PB8** VF, NH, 1947, "USE TAX
STAMP", \$7.50 black on yellowish paper, perf 12-1/2, scarce
and pristine MNH stamp (PH)...\$50

GM

A Greg Manning Company





**NUTMEG
STAMP
SALES**

P.O. Box 4547
Danbury, CT 06813

PHONE: 203-792-3862

FAX: 203-798-7902

E-MAIL: info@nutmegstamp.com

WEB: www.nutmegstamp.com



AA890M

946232

44

114-02063-002060

11056 *Montana* ★★ **PB10** VF, NH, 1947, "USE TAX
STAMP", \$30 blue on yellowish paper, perf 12-1'2, very
scarce stamp in pristine MNH condition (**PH**)...\$75





P.O. Box 4547
Danbury, CT 06813

PHONE: 203-792-3862

FAX: 203-798-7902

E-MAIL: info@nutmegstamp.com

WEB: www.nutmegstamp.com



AA890M

946237 50

114-02060-002060

11062 *Montana* ★★ PB17 VF, NH, 1948, "USE TAX STAMP", \$3
black and royal blue decal on plain cream card, hor black roul 6-1/4, very scarce
decal in pristine unused condition, all examples of this issue are seldom seen
(PH)...\$90

GM A Greg Manning Company





P.O. Box 4547
Danbury, CT 06813

PHONE: 203-792-3862

FAX: 203-798-7902

E-MAIL: info@nutmegstamp.com

WEB: www.nutmegstamp.com

AA890N

879817

40

148-02060-002060

54517 New York © D24 1917, Tax on
Investments \$4 brown, cr, embossed cnl, rare, EF
(PH)...\$65

An Escala Group Company





**NUTMEG
STAMP
SALES**

P.O. Box 4547
Danbury, CT 06813

PHONE: 203-792-3862

FAX: 203-798-7902

E-MAIL: info@nutmegstamp.com

WEB: www.nutmegstamp.com

AA8900

946202

114-02060-002060

11161 *Oklahoma* © D25 VF, 1978, "DOCUMENTARY", large \$20 red
w/ black value and thin, short serial numbers w/ blue h/s cnl of county clerk,
hyphen-hole 6-3/4, attractive and uncommon used elusive high value second
issue documentary stamp, best available example (PH)...\$44





P.O. Box 4547
Danbury, CT 06813

PHONE: 203-792-3862

FAX: 203-798-7902

E-MAIL: info@nutmegstamp.com

WEB: www.nutmegstamp.com

AA890P

906225

60

148-02060-002060

55110 *Pennsylvania* © B-1/2A VF, minor fts, unlisted private
provisional beer tax, 1933 fancy diecut bottle neck label reading "PENNA.
BEVERAGE/ TAX PAID 1/2 CENT/ MAY 11th. 1933" printed blue on white,
rare, only 2 in Hubbard collection (PH)...\$110

PENNA. BEVERAGE
TAX PAID ½ CENT
MAY 11TH, 1933



P.O. Box 4547
Danbury, CT 06813

PHONE: 203-792-3862

FAX: 203-798-7902

E-MAIL: info@nutmegstamp.com

WEB: www.nutmegstamp.com

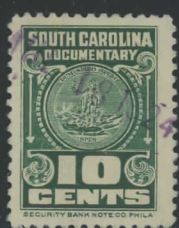
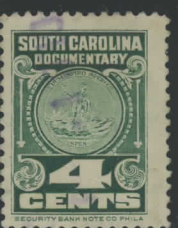
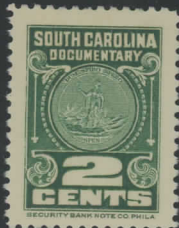
GM A Greg Manning Company

AA890S

945732 12

114-02060-002060

11374 South Carolina © D13-D16 VF, 1924, "DOCUMENTARY", group of four stamps incl 2 cent green (D13), 4 cent green (D14), 10 cent green (D15), and \$1 brown all w/ imprint of "Security Bank Note Co., Phila." perf 12, nice used examples of scarce examples of the entire second documentary issue, **only one \$1 and two 4 cent stamps in Hubbard Collection (PH)**...\$50






P.O. Box 4547
 Danbury, CT 06813
PHONE: 203-792-3862
FAX: 203-798-7902
E-MAIL: info@nutmegstamp.com
WEB: www.nutmegstamp.com

LL

AA890W 879900 150 148-02060-002060

56177 West Virginia S  ★★ Seed Collection 1947-81, SE1/SE29
 plus unlisted, Approximately 1,100 stamps incl 33 diff, duplication, mostly NH,
 singles, blks of 16 and panes of 25 and 100, as good a group as you'll find,
 Fine-VF (PH)...\$250

An Escala Group Company





**NUTMEG
STAMP
SALES**

P.O. Box 4547
Danbury, CT 06813

PHONE: 203-792-3862

FAX: 203-798-7902

E-MAIL: info@nutmegstamp.com

WEB: www.nutmegstamp.com

AA890W

906758

124-02060-002060

6175 *26* Wisconsin © B14 VF, 1933 \$1 brown w/ perfin cancel reading "W. B. L. CO. / 11-15-34," perf 12-1/2, Robert K. Henry sig, very scarce and attractive stamp, only 1 in the Hubbard collection (PH)...\$60

