

UNITED STATES



71



clear, good lg
& margin, but two
pinholes



7



9



N# 213



N# 213



20



24



24



N# 26



36 B



x 38
Tiny thin in
lower margin



65



65



71



17



73



73



114



76



88



112



NC 113



no gum 113



114



115



116



116



117



117



114



119



117



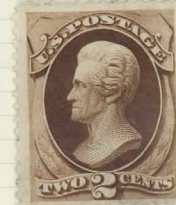
120



121



145



156

N# 157



158



N# 159



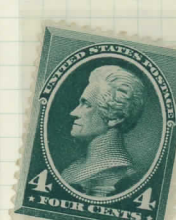
183



206



209



N# 211



148

INTERNATIONAL PHILATELIC EXHIBITION, OCT. 16TH TO 23RD 1926
18770



18770

18770

NEW

YORK

18770

N.Y.

U.S.A.

NH 630

NH C13

NH C14

NH C15



Hinged

Hinged

Hinged

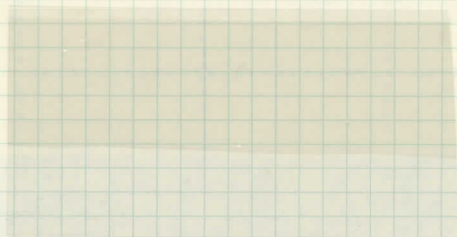
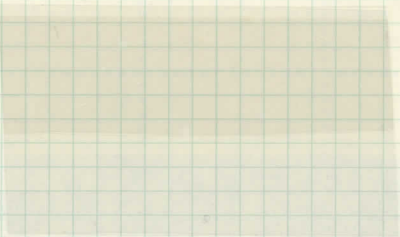
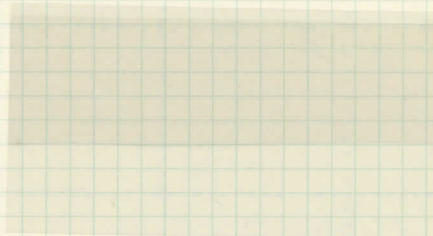


C10a



750

C13-15 1930 Graf Zeppelin
full set, all original gum,
Five + Scott Certificates
17-3, 17-4, 17-45
Hinged



C1-C6 hinged



C21



C18 NH



C22

UNDER AUTHORITY OF JAMES A. FARLEY, POSTMASTER GENERAL AT A CENTURY OF PROGRESS

PRINTED BY THE TREASURY DEPARTMENT, BUREAU OF ENGRAVING AND PRINTING



IN COMPLIMENT TO THE AMERICAN PHILATELIC SOCIETY FOR ITS CONVENTION AND EXHIBITION

CHICAGO, ILLINOIS, AUGUST 1933. PLATE NO. 21159

730

UNDER AUTHORITY OF JAMES A. FARLEY, POSTMASTER GENERAL AT A CENTURY OF PROGRESS

PRINTED BY THE TREASURY DEPARTMENT, BUREAU OF ENGRAVING AND PRINTING



IN COMPLIMENT TO THE AMERICAN PHILATELIC SOCIETY FOR ITS CONVENTION AND EXHIBITION

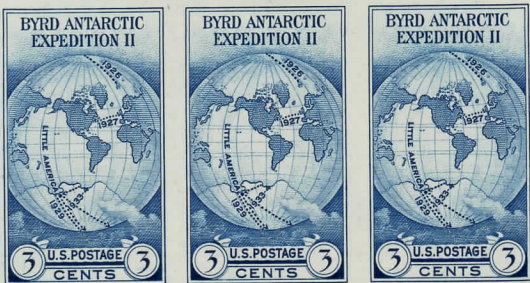
CHICAGO, ILLINOIS, AUGUST 1933. PLATE NO. 21146

731

Hinged on top

UNITED STATES

UNDER AUTHORITY OF
JAMES A. FARLEY, POSTMASTER GENERAL



PRINTED BY THE TREASURY DEPARTMENT,
BUREAU OF ENGRAVING AND PRINTING

IN COMPLIMENT TO THE
NATIONAL STAMP EXHIBITION OF 1934



NEW YORK, N.Y., FEBRUARY 10-18, 1934
PLATE NUMBER 21184

UNDER AUTHORITY OF
JAMES A. FARLEY, POSTMASTER GENERAL



PRINTED BY THE TREASURY DEPARTMENT,
BUREAU OF ENGRAVING AND PRINTING

IN COMPLIMENT TO THE
NATIONAL STAMP EXHIBITION OF 1934



NEW YORK, N.Y., FEBRUARY 10-18, 1934
PLATE NUMBER 21184

UNDER AUTHORITY OF
JAMES A. FARLEY, POSTMASTER GENERAL



PRINTED BY THE TREASURY DEPARTMENT,
BUREAU OF ENGRAVING AND PRINTING

IN COMPLIMENT TO THE TRANS-MISSISSIPPI
PHILATELIC EXHIBITION AND CONVENTION,



OMAHA, NEBRASKA, OCTOBER, 1934.
PLATE NUMBER 21341

UNDER AUTHORITY OF
JAMES A. FARLEY, POSTMASTER GENERAL,



PRINTED BY THE TREASURY DEPARTMENT,
BUREAU OF ENGRAVING AND PRINTING,

IN COMPLIMENT TO THE AMERICAN PHILATELIC SOCIETY,
FOR ITS CONVENTION AND EXHIBITION.

ATLANTIC CITY, NEW JERSEY, AUGUST 1934.
PLATE NUMBER 21303



113



114



115



116



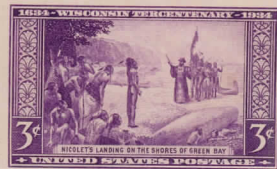
117



119

751

750



LATELIC SOCIETY F

PARTMENT, BUREAU



RITS CONVENTION A

THE TREASURY DE



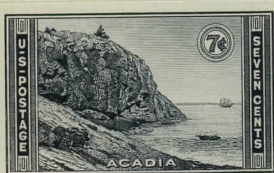
752

766a

767a



161



762



767



771



777



755



137



753



ATE NO. 21145

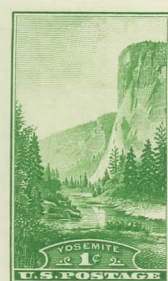
IS, AUGUST 1933. PL

ERIAL AT A CENTURY

EY, POSTMASTER GEI



753

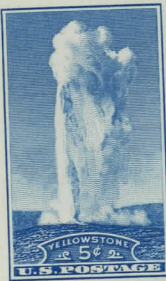


756

752

766a

767a



760



763



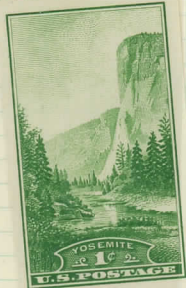
765



N.Y., FEBRUARY 1
ATE NUMBER 2118
DER AUTHORITY
RLEY, POSTMAST

EBRASKA, OCTOE
ATE NUMBER 213

DER AUTHORITY
RLEY, POSTMAST



7689

7679

THORITY OF
POSTMASTER GENERAL.

UNDER AUT
JAMES A. FARLEY, PC



UNITED STATES POSTAGE
THREE CENTS

IN COMPLIMENT
FOR ITS

DEPARTMENT,
D PRINTING.



UNITED STATES POSTAGE
THREE CENTS

7709

PRINTED BY
BUREAU OF



UNITED STATES POSTAGE
THREE CENTS

ATLANTIC CITY, NEW J
PLATE NUM



TRANS-MISSISSIPPI
ON AND CONVENTION.

PRINTED BY THE TRE
BUREAU OF ENGRA



Yosemite
U.S. POSTAGE

UNDER AUT
JAMES A. FARLEY, PC

ER, 1934.
41

OMAHA, N
PL

DEPARTMENT,
D PRINTING.



UNITED STATES POSTAGE
THREE CENTS

7709

7699



ENT TO THE
XHIBITION OF 1934

PRINTED BY THE TRE
BUREAU OF ENGRA



O-18, 1934
34

NEW YORK,
PL

7689

UNDER AUTHORITY OF
JAMES A. FARLEY, POSTMASTER GENERAL

PRINTED BY THE
TREASURY DEPARTMENT
BUREAU OF ENGRAVING AND PRINTING



IN COMPLIMENT TO THE
THIRD INTERNATIONAL PHILATELIC
EXHIBITION OF 1936

NEW YORK, N.Y., MAY 9-17, 1936
PLATE NUMBER 21558

778

UNITED STATES



PRINTED BY
AND EXHIBITION



PRINTED BY
AND EXHIBITION



PRINTED BY
AND EXHIBITION



OF PROGRESS
IN COMPLIMENT
D PRINTING

UNDER AUTHO
D PRINTING

OF PROGRESS
IN COMPLIMENT
D PRINTING

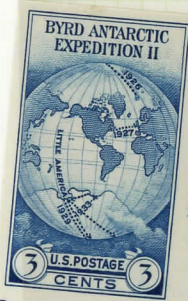
UNDER AUTHO
D PRINTING

OF PROGRESS
IN COMPLIMENT
D PRINTING

UNDER AUTHO
D PRINTING

766

767



PRINTED BY THE TRE
BUREAU OF ENGRA
XHIBITION OF 1934



IN COMPLI
VING AND PRINTING
NATIONAL STAMPE



PRINTED BY THE TRE
BUREAU OF ENGRA



O. 18, 1934
84
OF
ER GENERAL

NEW YORK,
PL
UND
JAMES A. FAR

NEW YORK,
PL
UND
JAMES A. FAR

OF
ER GENERAL
18, 1934
14

BER, 1934.



IN COMPLI
VING AND PRINTING
NATIONAL STAMPE



PRINTED BY THE TRE,
BUREAU OF ENGRA
ENT TO THE
XHIBITION OF 1934



IN COMPLIMENT TO THE
PHILATELIC EXPOSITIO



ASURY DEPARTMENT,
VING AND PRINTING



PHILATELIC SOCIETY,
XHIBITION,

PRINTED BY
BUREAU OF



PHILATELIC SOCIETY,
XHIBITION,

PRINTED BY
BUREAU OF



ERSEY, AUGUST 1934.
BER 21303

ATLANTIC CITY, NEW JE
PLATE NUME

ERSEY, AUGUST 1934.
BER 21303

ATLANTIC CITY, NEW
PLATE NU

HORITY OF
STMASTER GENERAL,

UNDER AUT
JAMES A. FARLEY, PC

HORITY OF
STMASTER GENERAL,

UNDER A
JAMES A. FARLEY,



IN COMPLIMENT
FOR ITS C

DEPARTMENT,
D PRINTING,



IN COMPLIMENT
FOR ITS C

DEPARTMENT,
D PRINTING,



770



757



758



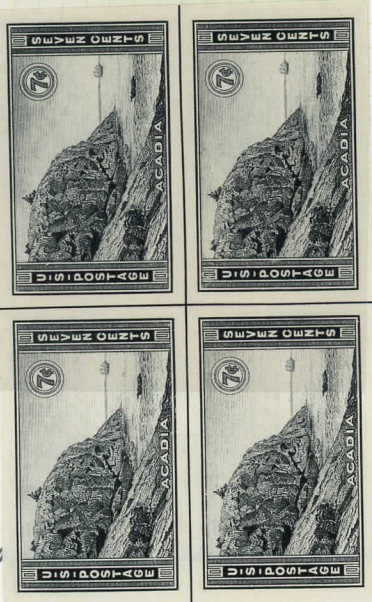
759



760



761



762

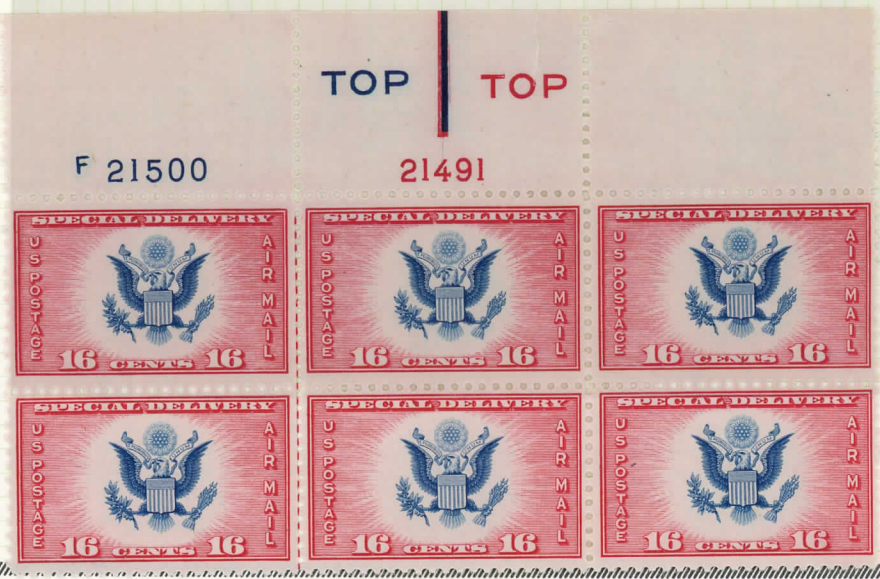


763



764

UNITED STATES



167

CE1

CE2

UNITED STATES

INTERNATIONAL PHILATELIC EXHIBITION, OCT. 16TH TO 23RD 1926
18774



18774

18774

NEW YORK 18774 N.Y. U.S.A.

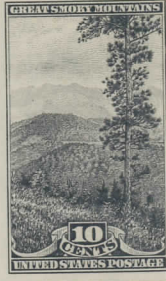
630 hinge mark on bottom

C13

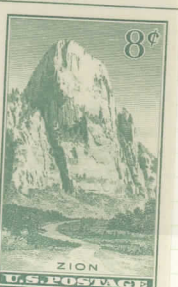
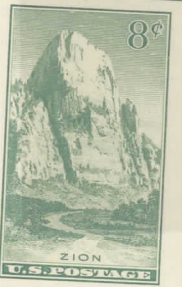
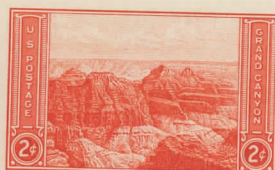
C14

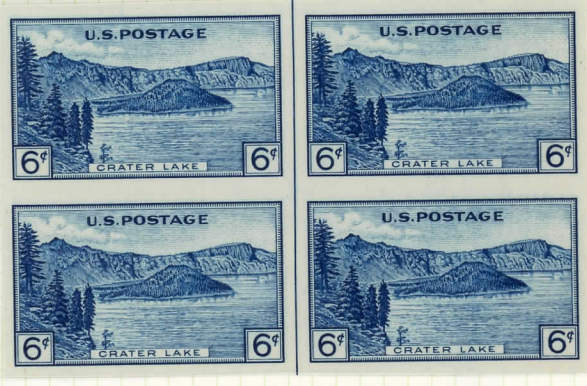
C15

UNITED STATES



756-765





722

606

604



605

721

602

610a

UNITED STATES



348 x



349 x



cut? 352 x



385



386 x



390



394



395



410



411



413



441



443



455



x cut? 446



490



492



493



495



496



497



486



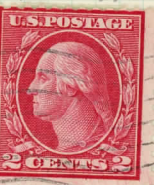
488



489



525



540



542



cancel 543



502



581



582



583



584



585



586



587



589



590



591



604



605



606



612



632



684



634



6359



636



637



638



639



640



641



642



692



x 693



694



695



696



697



698



699



700

UNITED STATES



701



653



18208



656



651



628



651



617



618



619



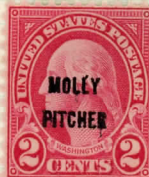
629



643



644



646



647



648



648



649



650



654



655



657



601



602



658



660



661



659



669



671



680



681



682



683



683



686



687



688



689



690



682



571



689



718



719



721



722



723



715

UNITED STATES



671



646



647



710



711



715



702



703



714



725



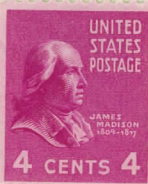
726



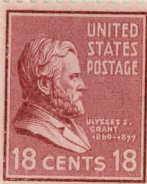
734



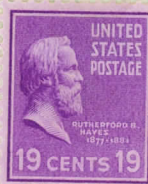
510



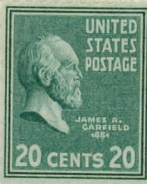
808



822



824



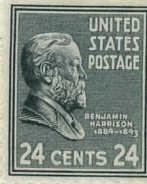
825



826



827



828



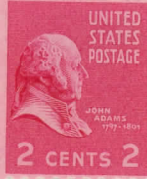
830



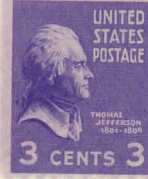
848



849



850



851



818



831



733



740



741



742



743



744



745



746



747



748



749



627



628



718



719



681



331



332



334



335



336



374



375



376



376



377



378



379



380



382



383



400A



406



414



416



417



418



425



498



501



504



506



507



508



509



511



512



513



514



515



516



481



482



527



536



538



530



541



542



543



546



548



549



550



597



598



599



601



602



603

UNITED STATES



408



cross 409



409



486



488



489



490



492



493



495



506



507



509



514



516



517



525



hinged 527



528



529



530



536



537



9426

547



549



550



576



577



15058

610



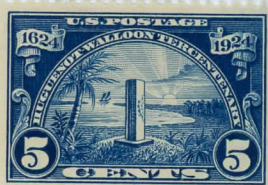
611



612



614



616



617-619



628



620



621



627



629



643



645

UNITED STATES



597



598



598



599



599



599L 7599



599A



600



600



601



601



602



602



603



603



604



605



606

UNITED STATES



331 331 332 335 337 338 340



341 343 343 343 344 347 348



375 376 377 378 379 380 381



382 383 383 384 385 385 385



385 388 oriented? 375 390 390 390 393 395



397-400A



401-404



center line 409

409 410 410 411 412

410

UNITED STATES



405



406



407



415



416



417



419



420



421



422



425



426



427



428



429



430



434



435



437



439



440



441



442



443



444



445



449



450



440



444



7806



463



464



465



466



469



470



470



471



471



472



472



473



474



hinged 475



476



476



479



480



481



486



488



489



490



490



492