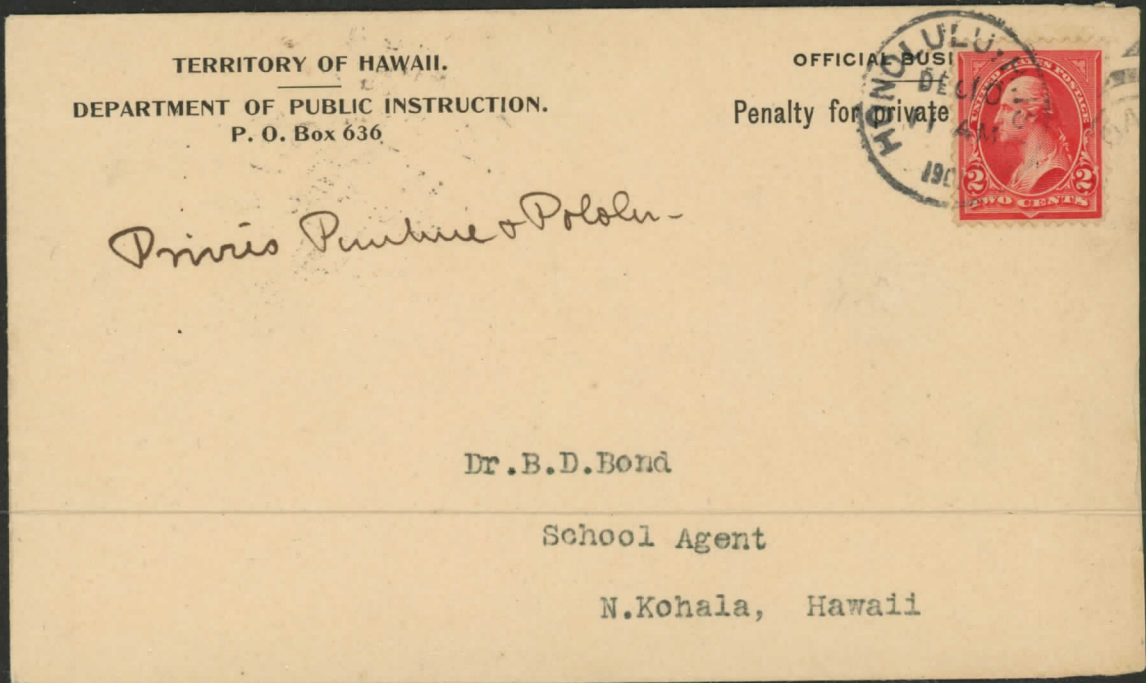


Official Business Envelope - Territory of Hawaii, Department of Public Instructions., P.O. Box 636

Addressed to Dr. B.D. Bond, N. Kohala, Hawaii with a U.S. #279B stamp and a black HONOLULU, H.I., DEC 10, 11AM, 1901, (MH# 234.02) cancel. The envelope is back stamped with a black KOHALA H.I. ISLES., REC'D., DEC 11, 12M, 1901, cancel.



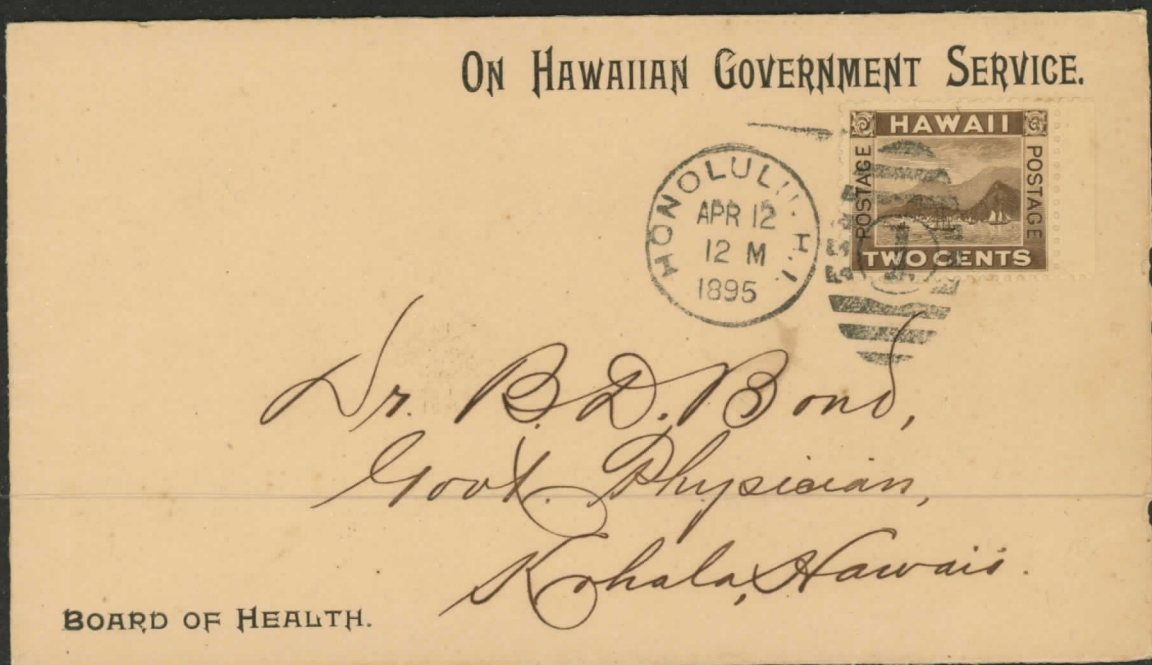
Small Registered Envelope (torn Flap and a Wax Seal).

Addressed to Miss F. M. Walcott, Hampton, Virginia, with a U.S. #283 Type II stamp. The stamp has an unknown Honolulu oval cancel. There is a purple Registration Cancel dated APR 29, 1902, HONOLULU, HAWAII, and a purple #1377 stamped on the envelope. The envelope is back stamped in Hampton, VA with a black single line circle dated MAY 13, 10 AM, 1902, PAID.



Board of Health - On Hawaiian Government Service Envelope

Addressed to Dr. Bond, Kohala, HI. with #75 stamp (sheet pos. 30) and a black cds.  
HONOLULU, HI (MH# 231.72), R-10, dtd. APR 12 1895, along with a #1 Duplex Killer. Reverse  
side has a partial purple kohala, HAWAII cds (MH# 282.013), R-3, dtd. APR 13, 1895.



UX2 Post Card

Cancellations:

- a. PAIA, MAUI, JUL 6 1883 (MH 282.013), black, R-6 plus #117 killer.
- b. 27 mm circular red SAN FRANCISCO, CAL., PD. ALL (Davey #413.34).
- c. HONOLULU, HAWAII, JUL 10, red MH# 235.12, R-7.

