

PIONEER PERIOD 1860-1870

the breadbasket for Colo with the (ty), small farms and ranches. Almost all adjacent to the Arkansas River.

*Pueblo Co Territory
Jarrett 209
1869-70
E Scott 158*

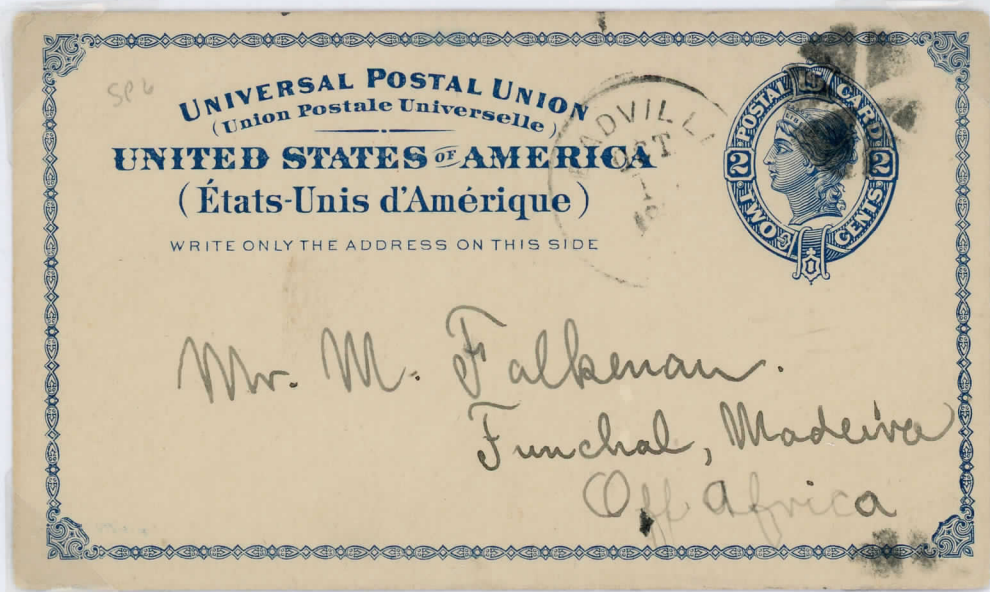


PUEBLO, C. TY. (Pueblo Colorado Territory) Jarrett 209, usage 1869-70 with Scott 158 and target killer. Scar: VERY RARE



PUEBLO, COLO. (Territorial) Jarrett 210 on U-82 with Scott 158 for added postage, usage 1874-76 with diamond grid cancel. Scar: RARE

Leadville, Lake County
July 2, 1877 to Current



Leadville Colo, October 12, 1880

This Post Mark is the later than currently shown in the Encyclopedia. This usage of post card UX6 is also an unusual usage. This is listed in the Bill Bauer in the "Colorado Postal Encyclopedia" in Lake County as Type 5 CI 10P 27.0 Handstamp Cork, Smudge used Sep 13, 1879 to Oct 12 1880. This foreign usage to Maderira Island and Funchal the capital is a very scarce usage and may be unique. It contains a London Transit mark on the reverse.

Established April 1, 1867

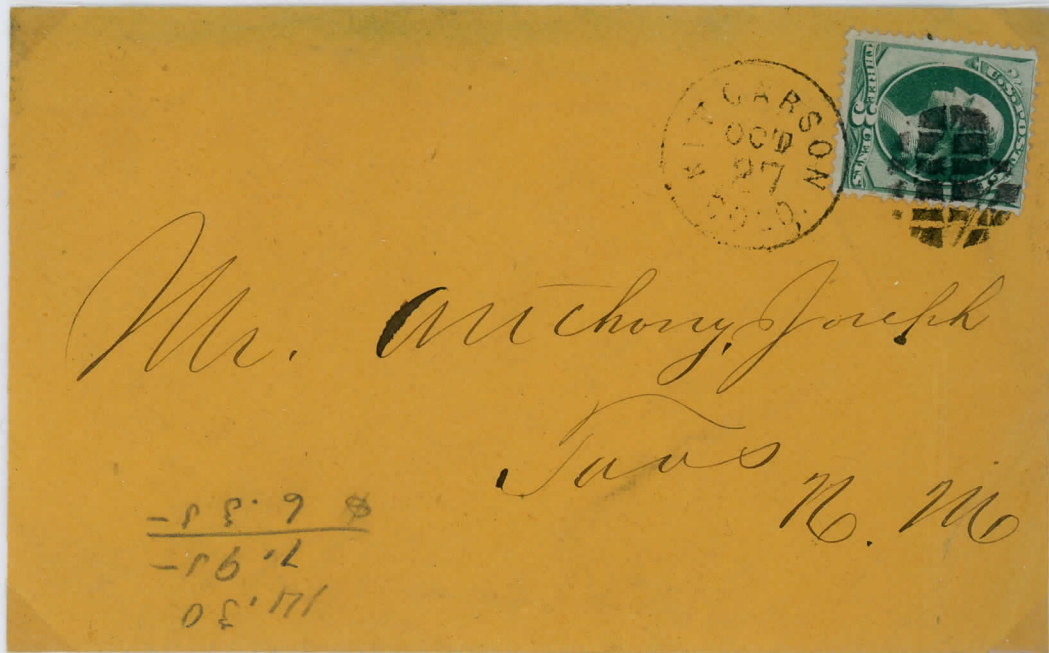


SAGUACHE COL.
March 17, 1875

Known use : August 9, 1873
August 8, 1877

Kit Carson, Cheyenne County
December 29, 1869 to Current

Kit Carson Oct 27 1873



The location was a major intersection of stage and wagon roads, and cattle trails to Denver, Pueblo, and several other settlements in the Arkansas River Valley. It was from Kit Carson that the Arkansas Valley Railroad began. It was built to Fort Lyons and was planned to continue on to Pueblo. However construction of the Atchison, Topeka, and Santa Fe Railroad preempted the Arkansas Valley Railroad and it was soon abandoned and dismantled. Kit Carson was not incorporated until July 13, 1931. This postmark is type 4 in the Bill Bauer "Colorado Postal Encyclopedia" CI 10P 25.0 CDS hand stamp with hobnail grid. It was used from April 5, 1873 to December 4, 1873. This cover is postmarked October 27, probably 1873 territorial.

TRINIDAD
LAS Animas (1862-DATE)
DCDS Red
MAR 28, 1870
Territorial
Former Bauer
\$175.00

If not delivered within 10 days, to

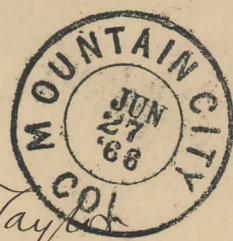


Mr. Antonio Joseph
Lucas
New Mexico



Mrs. Margaret Hasler
Danville, Va. Co
N.Y.

Mountain City COL
Gilpin (1860-1869) 3-5
6-27-1868 Territorial
Type 4 DCDS 4-Ring
Target
\$85.00



Mrs. Bayard Taylor,
Kennett Square,
Chester Co.
Pennsylvania.

Return to VIRGINIA MINING CO.,
ROSITA, Colorado,
If not delivered within 10 days.

ROSITA
DLV
30
1876
COLORADO

2-5



Mr Cuthbert Esq
Presh
Beverly
Barling Fox Co
New Jersey

Black Hawk Point
Gilpin (1862-1871) 5-5
8-15-1868 Territorial
Type 5
\$100.00



Francis Smith Esq
6 Broad St. Office 14-
~~Rockland Mass~~
New York

Spanish Bar
Clear Creek (1860-1865) 5-5
12-9-cu 1865
Territorial
\$100.00



Mrs J W Shackara
846 Ontario St
Philadelphia
Pa

1875