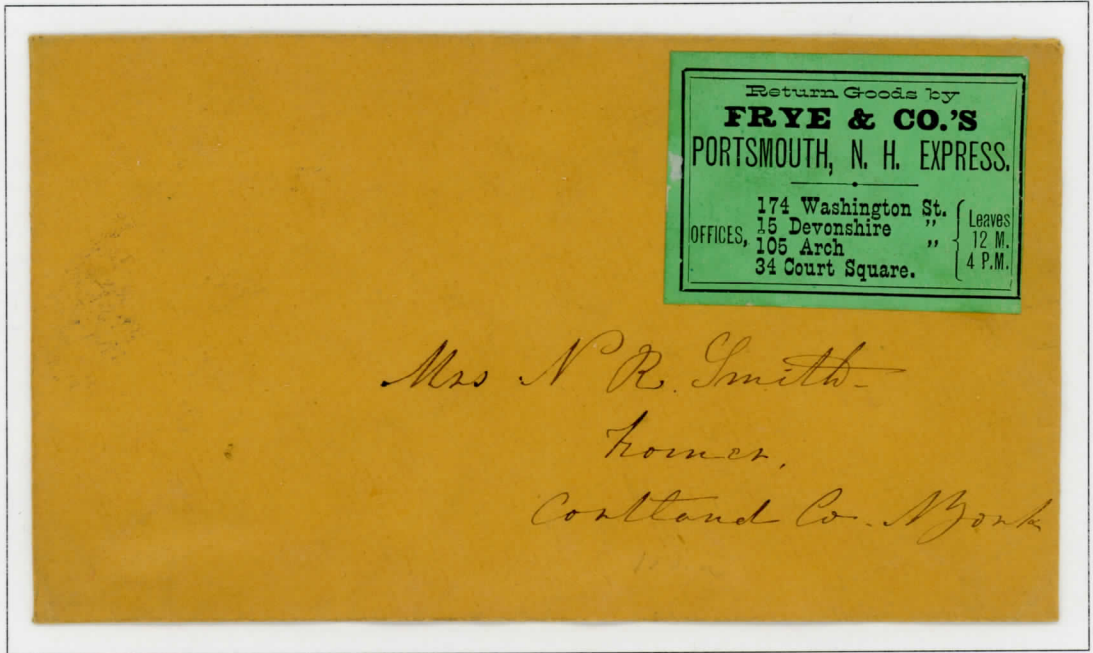


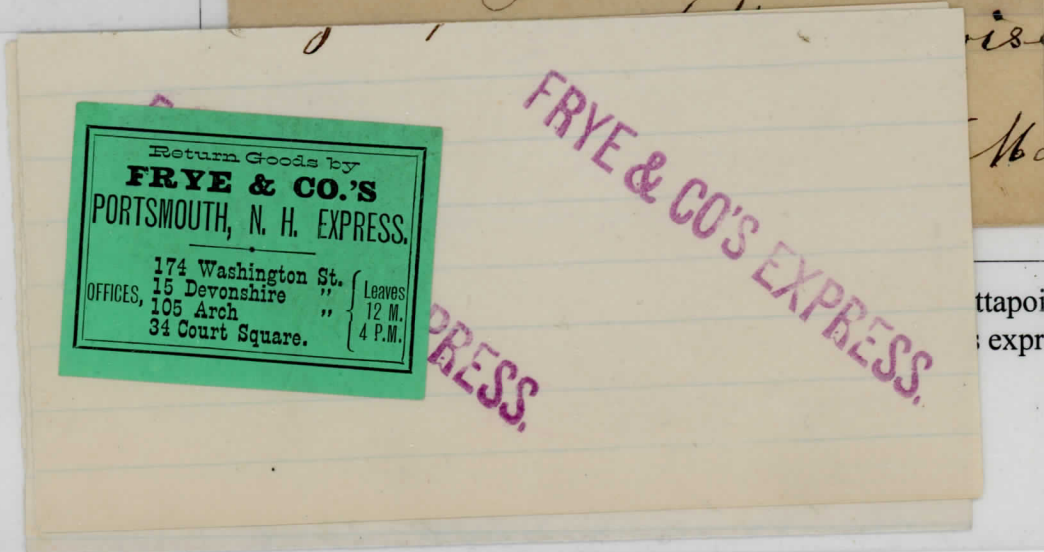
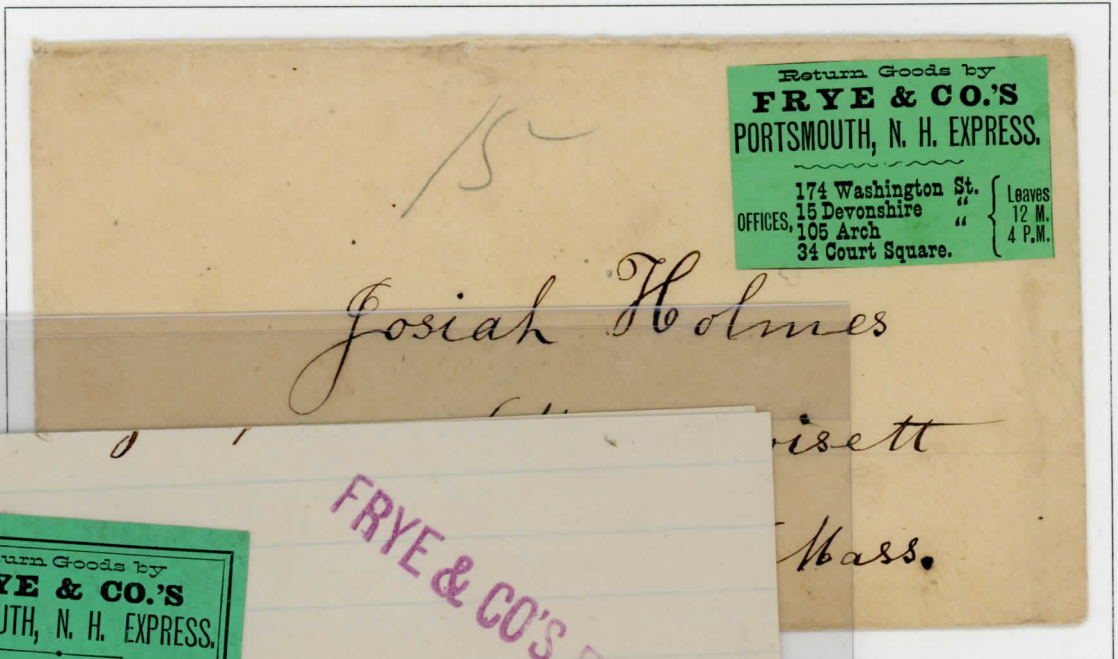
FRYE & COMPANY

Boston to Portsmouth NH

1880s



Town of origin and date unknown, railroad to Homer New York  
Green label with offices prepaes express charges



ttapoissett MA  
express charges

This Communication was  
sent with speed by the "Pa-  
cific Mail" at Adams' Ex-  
press and the "Telegraph Office."  
Letters, Circulars, &c., sent  
out promptly. A special  
messenger always ready. Your  
patronage is solicited.  
STANT & CO.

Mr Tucker  
W. House  
Phil<sup>da</sup>

**FORWARDED BY**  
**LIVINGSTON, HOWARD & Co's**  
**EXPRESS.**  
Pottsville, Opposite Pennsylvania Hall.  
Reading, Penn Street.  
Pottstown, H. A. Sellers & Co.  
Philade'phia, 43 South Third Street.

**FORWARDED**  
**BY THE**  
**HOWARD EXPRESS**  
**COMPANY,**  
**FROM**  
**Allentown, Pa.**

EXP 70

FORWARDED BY  
**HOWARD & CO'S**  
**EXPRESS.**  
FROM  
SCHUYLKILL HAVEN, Pa.  
HOWARD & CO. PHILADELPHIA

9 1/00-  
From S. H. Dale  
E. E. Phelps  
in this  
Patience  
Eastern Express Co.  
St. Louis, Mo.

FORWARDED BY  
**KINSLEY & CO'S**  
 New York, Philadelphia & Boston  
**EXPRESS.**  
 OFFICES.  
 NEW YORK, 72 Broadway & 13 New Street.  
 BOSTON, 11 and 13 State Street.  
 FALL RIVER, Maine Street, Mt. Hope Bldg.  
 NEWPORT, 190 Thames Street.  
 PHILADELPHIA, 341 Chestnut Street.  
 NANTUCKET, Massachusetts.

\$95.00  
*[Handwritten initials]*

*Isreal Griffith Esqr*  
*Baltimore*  
*Md*

(47) MONEY PACKAGE.  
 United States Express Co.  
 Hamilton & Cincinnati Rte.  
*A. Williams Mess.*

**U. S. & CANADA**  
**EXPRESS.**  
 FROM  
**OGDENSBURG, N. Y.**

*Ralph Lumber Esq*  
*Chattanooga*  
*N.Y.*

By Telegraph.

MERCHANTS LINE,

No. 23 Canal St. Providence.

*Mess. Orray Dept H*  
*Providence*



No.  
 Delivered free.

*Godfr. Pattison Co*  
*recd March 11/50*

FORWARDED BY THE

UNION

L

EXPRESS.

CRESTLINE, Ohio.  
COMPANY  
AMERICAN EXPRESS  
FORWARDED BY  
MONEY PACKAGE.

MONEY PACKAGE,  
FORWARDED BY THE  
UNION LINE  
EXPRESS,  
FROM  
CANTON, OHIO.

\$ 10 21 <sup>00</sup>/<sub>100</sub> Enclosed.

For John B. Wilson Esq

Columbia City

Whitely Co

Ind

From

Mr Johnny  
Canton O

\$584<sup>00</sup>

# MONEY PACKAGE

**MONEY PACKAGE.**  
(83) FORWARDED BY  
**American Merchants**  
UNION EXPRESS CO.  
FROM  
Beaver Dam, Wis

FORWARDED BY THE

## American M. U. Express Co.,

For *Noah Hallowell*

From *A Scott Dean*  
*Beaver Dam Wis*

*Rubicon*  
*Wis*

Collect ~~4~~

*Charles W Connolly Esq*

*45 Water Street*

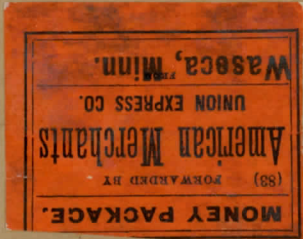
*City W B*

**VIRGIL & CO.'S  
EXPRESS.**  
  
FROM  
**BURLINGTON.**

\$ 208 <sup>65</sup> -

# MONEY PACKAGE

FORWARDED BY THE



## American M. U. Express Co.,

*Silas Hubbell*

FOR

*Mrs Samuel H Buck*

From *E G Wood*

*McGregor*

*Waseca Minn*

*Iowa*

American Merchants Union Express vermilion label affixed in Waseca MN for delivery to Iowa.

790

*Nils Exp Paid*



*Miss Addie York  
11 Ashland St  
Boston  
Mass*

*BOOKLET  
125*

791

*157*



*Mrs Morant  
Benjamin & Vaughn's  
Malden Mass  
Express*

*BOOKLET  
150*



*Mr Geo. Worcester,  
Andover,  
Mass.*

*\$50.00*

*Messrs. G. F. Hartung & Co.  
No. 518 Broadway,  
Opposite St. Nicholas Hotel,  
New York.*

*05W660  
100*





2439

# Quit-Claim Deed.

Estate.....

From *Francis E. Sevier*

To *A. M. Mace*

Dated..... 1874

**WESTONS,  
Plymouth & Boston  
EXPRESS;**

PLYMOUTH SS. July 22, 1874

RECEIVED AT 8.45 A.M. AND RECORDED  
in PLYMOUTH COUNTY REGISTRY OF  
DEEDS, BOOK 407 PAGE 249

At TEST: *Mrs S. Danforth* REG.

Hull - Plymouth. 65

July 22, 1874 at 8.45 a.m.

2

# Quit-Claim Deed.

Estate *J. W. Chapman*

From *John Dew*

To *Anne H. Currier*

Dated *March 31<sup>st</sup> 1873*

Salem April 10, 1873, ... 7 m. before 3 P.M.  
Rec. and ent. with Exec Deeds,  
Southern District, Book 878 leaf 159

*Wm. Ephraim Brown Reg.*

*Loretto*

*C. O. C. 80*

*John Dew*

**SAVORY & Co.'s  
SALEM & BOSTON  
EXPRESS.**  
32 COURT SQUARE. BOSTON  
7 WASHINGTON STREET. SALEM

Bill 2458 for Collection

On A.M. Seal

United States and Canada  
**EXPRESS**  
CHENEY, FISKE & CO.,  
PROPRIETORS.

Raymondville  
N.Y.

Wm.  
Kenna, W. Kinner  
Cyclopaedia

Return stamp in this



# Adams Express Company

## WESTERN DIVISION.

435  
FORWARDED  
BY THE  
Adams Express Co.  
FROM  
SULLIVAN, IND.

\$1141

For W<sup>m</sup> A. Knowlton Esq<sup>r</sup>

From J. M. Kenna

Rockford

Sullivan, Ind 9 Feb 7 1866

Illinois 40.00

FRONT ONLY

# ADAMS EXPRESS COMPANY,

No. 320 CHESTNUT STREET,  
PHILADELPHIA.

EXPRESS FORWARDERS.

COLLECT ON DELIVERY OF GOODS.

\$ 21.03

On Brown & Messer

Newark N.J.

C. O. D.

For Cornelius Baker

Philadelphia, Oct 20 1860.

## INSTRUCTIONS.

Return proceeds in this envelope, securely sealed with wax, by first Express.

The directions of the SHIPPER are, not to allow the Package accompanying this C. O. D. to be opened, or any part of its contents delivered, until the Bill is paid in full.

Endeavor to collect in funds most desirable for the Shipper. Return the identical money received.

If the Package is not delivered, the Shipper will be liable for the same.

If the Package is delivered, the Shipper will be liable for the same.

When the Package is delivered, the Shipper will be liable for the same.

When the Package is delivered, the Shipper will be liable for the same.

When the Package is delivered, the Shipper will be liable for the same.

When the Package is delivered, the Shipper will be liable for the same.

When the Package is delivered, the Shipper will be liable for the same.

When the Package is delivered, the Shipper will be liable for the same.

When the Package is delivered, the Shipper will be liable for the same.

When the Package is delivered, the Shipper will be liable for the same.

When the Package is delivered, the Shipper will be liable for the same.

When the Package is delivered, the Shipper will be liable for the same.

FORWARDED BY  
**NEW JERSEY EXPRESS CO.**  
FROM  
**NEWARK.**

PRINCIPAL OFFICES:  
Jersey City Ferry Building, Foot of Cortlandt St.  
442 Broadway, Adams Ex. Co's Office,  
NEW YORK.

162 MARKET STREET, NEWARK,  
ELIZABETH, TRENTON,  
RAHWAY, BRISTOL,  
N. BRUNSWICK, BORDENTOWN,  
PRINCETON, BURLINGTON,  
and 320 Chestnut St., Philadelphia.

J. C. Beale, Stationer, 19 Nassau St., N. Y.

**GEORGE & CO'S LAWRENCE EXPRESS**

**Lawrence to Boston**

**1854, 1862**

Lawrence MA  
17 Feb 1854,  
George & Co.  
"Railroad Exchange"  
vermilion label pays  
express charges,  
"By Putney &  
George Express"

Railroad to Boston

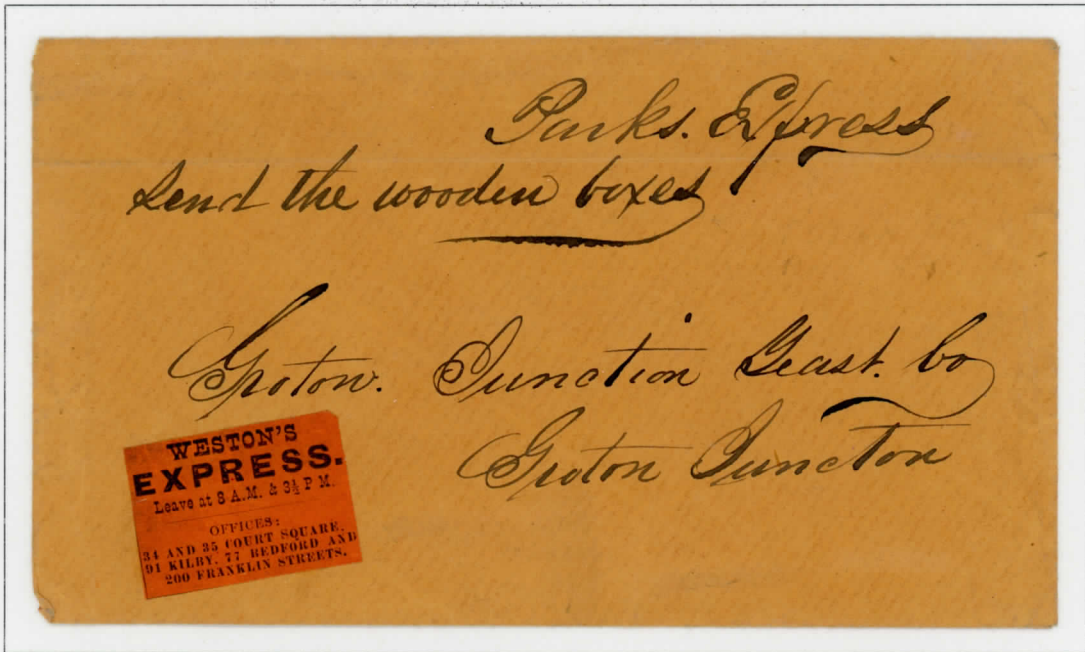


Invoice for goods

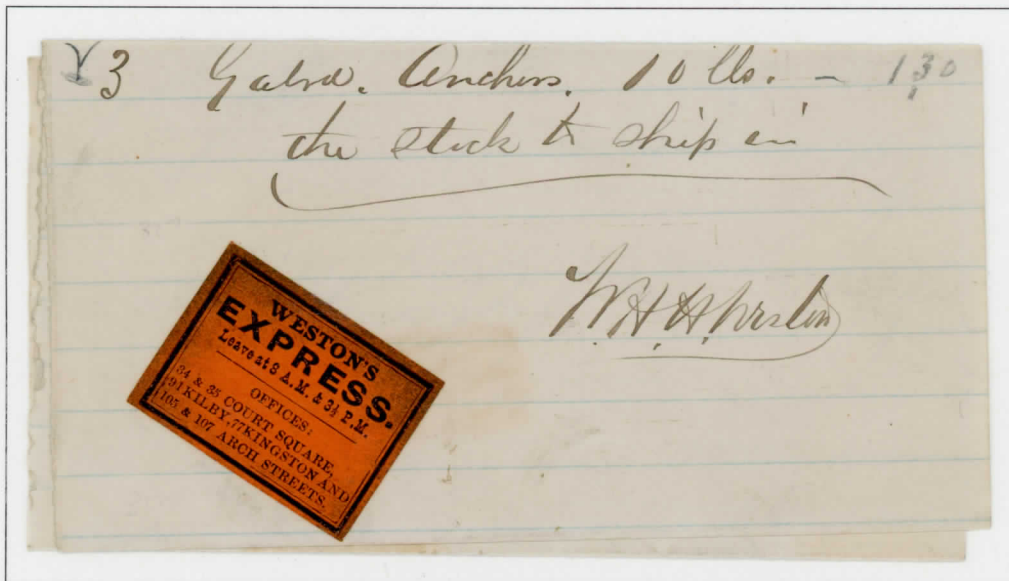
WESTON'S EXPRESS

Boston to Plymouth

1870s - 1880s



Boston MA (undated), railroad to Groton Junction MA  
Vermilion label for prepayment of express charges



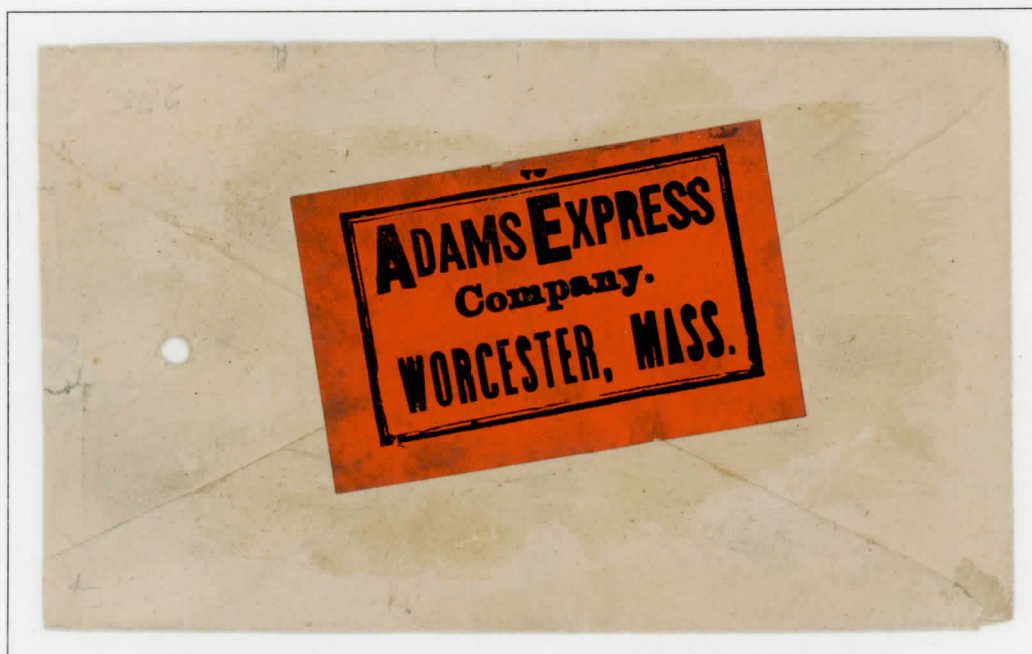
Plymouth MA invoice, 2 May 1883, railroad to Boston  
Vermilion invoice (different than above) prepays express charges for goods

## ADAMS EXPRESS "TREE"

Adams Express Company

Worcester, Mass. – Circa 1860

Many eastern expresses were closely inter-related. Some were formed by merger of several companies. These "trees" will be shown together.



Vermilion label applied at back to seal envelope  
Worcester Massachusetts to Putnam Connecticut (address on other side) by railroad  
Enclosed invoice for goods so no government postage required  
Not in violation of law prohibiting private letter expresses

Alvin Adams began an independent mail company in opposition to William Harnden in 1840. His business expanded rapidly and, after passage of the July 1845 law, Adams Express became a railroad parcel express. In July 1854 Alvin Adams became president of Adams Express Co. after a merger of his company with Harnden & Co., Thompson & Co. and Kinsley & Co.

H. MATTHEWS'  
New-York, Oswego,  
Kingston & Toronto, (Ca.)  
EXPRESS.  
No. 10 Wall Street, New-York.

To the Hon<sup>ble</sup>  
E. Cooping  
President of  
Utica Schuetteady R Road  
Albany

Oswego New York, 31 December 1847, railroad to New York City  
Vermilion label, 6/ (75¢) express fee – only recorded Rice & Peck label

It is believed Matthews and Rice & Peck were forerunners of Fiske & Rice's Express.

Forwarded by  
CURRIER'S  
Gloucester and Boston  
EXPRESS,  
Office—27 Front Street  
Gloucester,  
5 Congress Sq., Boston.

*Carroll & Allen*

*W Messinger Esq  
Carroll & Allen  
Mass*

*Care of N & J Russell Boston*

Forwarded by  
CURRIER'S  
Gloucester and Boston  
EXPRESS.  
Offices—27 Front Street,  
Gloucester,  
5 Congress Sq., Boston.

*Walter Messinger Esq  
Carroll & Allen  
Mass*

*Care of N & J Russell Boston*

*Miss  
Walter Messinger Esq  
Boston  
Mass*

Winchester & Co.'s  
GLOUCESTER  
EXPRESS,  
32 Court Square.  
No other Office in Boston.





Miss A. P. Kent  
Cipelli Co. Youngs  
Ohio

ADX-L142 Martinsville, O.

on Adams Express Co. cover to Marion, Ind. F faults  
include tear in label

087986

\$45.00



To Adams Express

PA

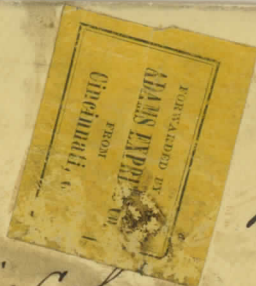
Mr J. Solis Cohen

415 Marshall St

Philadelphia

\$2.90 enclosed }

Pa



2/15  
Nov 7/59

36

# Warranty Deed.

Estate in *Amusing*

From *Saml A. J. Plummer*

To *John Carick*

Dated *May 21<sup>st</sup>* 1881

*John Steed*

ESSEX REG. OF DEEDS & DISTRICT  
 RECEIVED FOR RECORD  
 10.45  
 MAY 23 1881  
 BOOK 1058  
 LEAF 128

*2 MS. 42*

RETURN BY  
SAVORY & CO.  
ALLEN STREET.

*Carick*

**ROLLINS'**  
 West Newbury, Groveland and  
 South Groveland  
**EXPRESS**  
 AND FREIGHT LINE.  
 Office, 91 Kilby St., - Boston.