

PLATE 4



8-9-10R4 21 SINGLE/PAIR \$5000  
Type II  
Double Transfer 10R4



85L4  
IIIa  
475-



53-54R4  
Type IIIa 1050-



66R4 OK  
Type III  
PFC

275-

49L4  
Close to Type Ic (?)

23R4



56L4  
Type IIIA



52R4  
Ty IIIA 475-



98L4  
Type Ia  
\$10,000



67R4 OK  
Type III 1500-  
Horiz line on  
Shoulder



21L4  
Type IIIA 475-



65L4  
Ty IIIA 475-



RAS994  
Lot 1121  
PFC

79R4



71R4  
IIIa  
475-



63L4  
IIIa  
475-



50R4  
IIIa  
475-



69L4  
III  
1500



48R4  
IIIa/III  
475-

30R4  
IIIa/III  
475-



Plate 4  
Top Row

1-6L4  
Ty II  
Largest Imperf  
Top Row Multiple

1L

2L  
CVR

3L  
CVR

4L

5L

1L4



2L

4L

3L4  
II 1250-

5L4  
II 1250-

6L  
Stamp

7L

8L

9L

10L

5L4



9L4  
II  
1250-



1R

2R

3R

5R



1R4  
II 1250-



2R  
II  
1250-

4R  
II  
1250-



5R  
II  
1250-

1R4  
II 1250-

6R



7R  
II  
1250-

8R  
CVR

9R  
CVR



DT  
10R II  
1300-



6R

7R  
cat \$4000

8R

\$17,050



PLATE 4



88L4  
IIIa  
475-



74L4  
IIIa  
475-



50L4  
Unused  
III/IIIa



37L4 v  
IIIa  
475-



64L4 v  
TYPE III  
1500-



29R4  
TYPE IIIA  
match Neinken mat  
475-



71L4  
TYPE IIIA  
250-



52L4  
TYPE IIIA  
475-



18R4 v  
TYPE IIIA  
475-



76R4 No  
TYPE IIIA  
39L4  
250-



69R4  
Type IIIA  
Shoulder Scratch  
475-

79-80L4  
Type IIIA

Early Use

82R4  
TYPE IC

69R4  
TYPE IIIA

Imprint  
\$2900

70R4  
TYPE II



25R4  
Type III  
1500-



25R4  
Type III  
1500-



78R4  
TYPE III  
1500-



62L4  
TYPE III  
1500-



72L4  
Type IIIA  
475-

1991006  
Lot 1087

41L4  
Almost Ic



41L4  
IIIa  
475-

PLATE 4

475



76L4 IIIa  
475-



85R4 II/IIIa



12R4 IIIa  
475-



II/IIIa



42-43L4 IIIa  
1050-



43L4  
IIIa  
475-



33L4  
II/IIIa  
475-



32R4  
IIIa  
475-



59R4  
IIIa/III  
475-

59R4

77R4

6,000

34 35 36 37  
44 45 46 47  
54 55 56 57

R4

RAS 989-70

II/IIIa  
58R4

III/IIIa 475-  
58R4



57R4  
IIIa  
475-

81R4 (Ic)  
Shouldn't curl  
3500-

32L4

57L4 IIIa 475-  
84R4

IIIa pair



III 68R4  
1500-

68R4 III \$1500-



RAS 1006  
Lot 949  
PSE

59L4



87R4  
IIIa

88R4  
IIIa

68R4

85-86L4  
Painted

34L4  
IV III  
1500-



13L4

14L4

RAS 1016  
lot 954

75R4

1050-

IIIa \$1050- IIIa

#12,425





THE PHILATELIC FOUNDATION

270 MADISON AVENUE  
NEW YORK, N.Y. 10016

No 0144050

3/07/85

EXPERT COMMITTEE

We have examined the enclosed item submitted by the applicant described as follows:

Country: UNITED STATES OF AMERICA

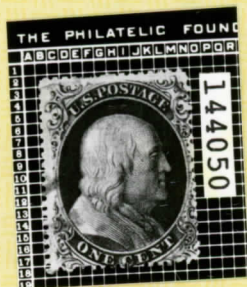
Cat. No.	Issue	Denom	Color
21	1857	1¢	blue

Scott's unless otherwise specified.

USED  
POSITION 66R4

OF WHICH A PHOTOGRAPH IS ATTACHED AND  
ARE OF THE OPINION THAT:

IT IS GENUINE \* \* \* \* \*



For The Expert Committee  
*William Fox*  
Chairman

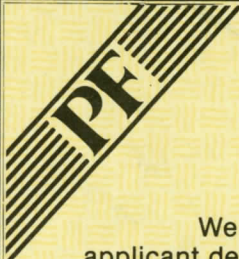
submitted by WILLIAM FOX AUCTIONS INC

THE PHILATELIC FOUNDATION

270 MADISON AVENUE  
NEW YORK, N.Y. 10016

EXPERT COMMITTEE

No. 0144056  
3/08/85



We have examined the enclosed item submitted by the applicant described as follows:

Country: UNITED STATES OF AMERICA

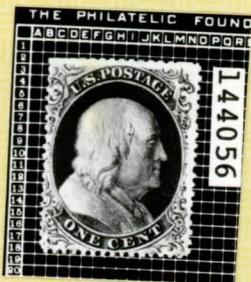
<u>Cat. No.</u>	<u>Issue</u>	<u>Denom</u>	<u>Color</u>
21	1857	1¢	blue

Scott's unless otherwise specified.

USED  
POSITION 78R4

OF WHICH A PHOTOGRAPH IS ATTACHED AND  
ARE OF THE OPINION THAT:

IT IS A GENUINE SCOTT 22, TYPE IIIA WITH A FADED  
MANUSCRIPT CANCELLATION \* \* \* \* \*



*[Signature]*  
For The Expert Committee  
Chairman

submitted by WILLIAM FOX AUCTIONS INC



THE PHILATELIC FOUNDATION

270 MADISON AVENUE  
NEW YORK, N.Y. 10016

No 0144055  
3/07/85

EXPERT COMMITTEE

We have examined the enclosed item submitted by the applicant described as follows:

Country: UNITED STATES OF AMERICA

<u>Cat. No.</u>	<u>Issue</u>	<u>Denom</u>	<u>Color</u>
21	1857	1¢	blue

Scott's unless otherwise specified.

USED  
POSITION 26L4

OF WHICH A PHOTOGRAPH IS ATTACHED AND  
ARE OF THE OPINION THAT:

IT IS GENUINE EXTENSIVELY REPAIRED \* \* \* \* \*



For The Expert Committee  
*[Signature]*  
Chairman

submitted by

WILLIAM FOX AUCTIONS INC