

Plate 2 imperforate

LEFT PANE

T 1L DT	T 2	T 3
A 11	A	A
B 21	B	B
A 31	A	A



140-

2L



55-



12L

460 as hand stamp



460-



140-



140-

d.t. \$210 each

PLATE 2



89R2 89R2 89R2



48R2 Dbl Trf 165
48R2 Double Transfer 165
48R2 Double Transfer 165



RAS 994-1141
89R2 DT
89R2 Double Transfer
89R2 Dbl Trf
89R2 Dbl Trf
300-
89R2 Dbl Trf



53-
813151
9th Row?

49R2

68-69R2

150-
1L2
"Dropped Relief"
→ MSE



19L2



40L2

58R2
Double Trf.
165-

42L2
85L2

27-
76R2

28R2



94R2



41L2



11R2



11R2



42L2

76R2



67R2



4L2

4L2



4L2
St. Louis lot

76L2



93R2
DT

31L2



31L2

PLATE 2



70R2



40R2



40R2



40R2



40R2
Imprint

55L2

↑
61R2

Early Usage
July 27, 1957
Bellevue
32R2?

88L2

19L2

57-67-77R2



22L2



22L2

75R2

29-30R2

80R2

58L2

9L2

23R2

65L2

92L2

82R2



54R2



8R2



16R2

55L2?

3L2

81R2

81R2



9L2

65R2

67L2



48L2

49L2
D.T.



49L2
D.T.



49L2
D.T.



36L2
PFC



49R2



58R2



87R2



38L2



57R2 (?)



76L2
curl



65L2



65L2



94L2



94L2

93L2



97L2



46R2
D.T.



63L2



39L2



24R2

25R2



74L2

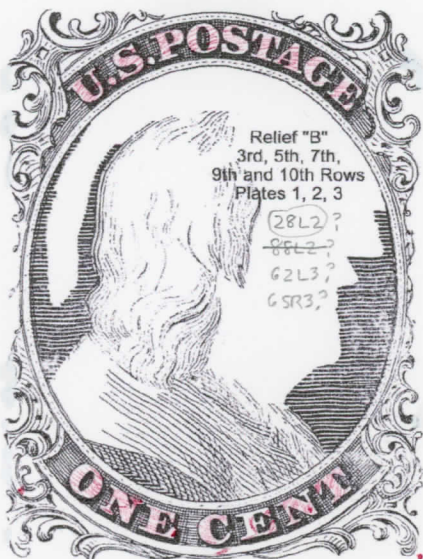
on
plate

956



24R2

74L2



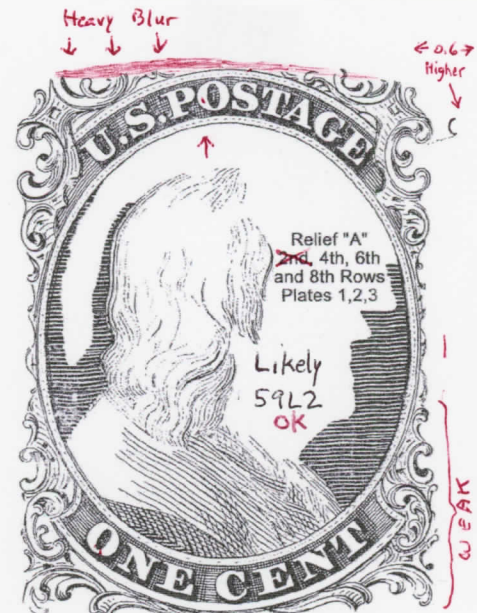
Relief "B"
3rd, 5th, 7th,
9th and 10th Rows
Plates 1, 2, 3

28L2?
88L2?
62L3?
65R3?

Short ornaments

55R2
RAS 998-351
not 35R2

55R2
(A015)
not 71R2



Heavy Blur

↓ ↓ ↓

← 0.67

Higher

Relief "A"
2nd, 4th, 6th
and 8th Rows
Plates 1, 2, 3

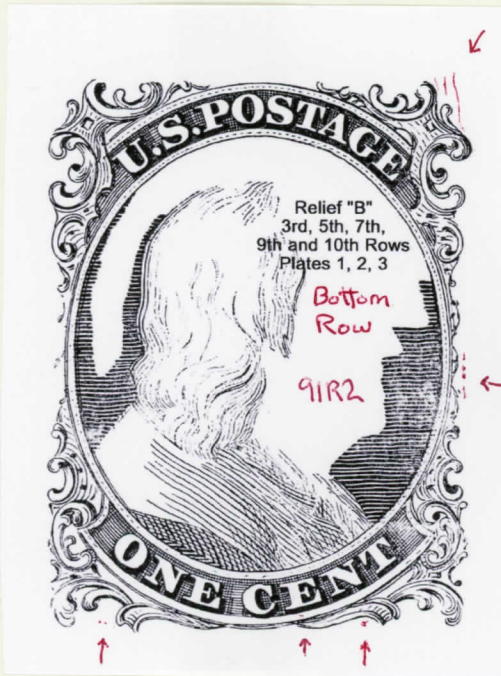
Likely
59L2
OK

WEAK

28L2 ?

59L2

RAS 994-1020

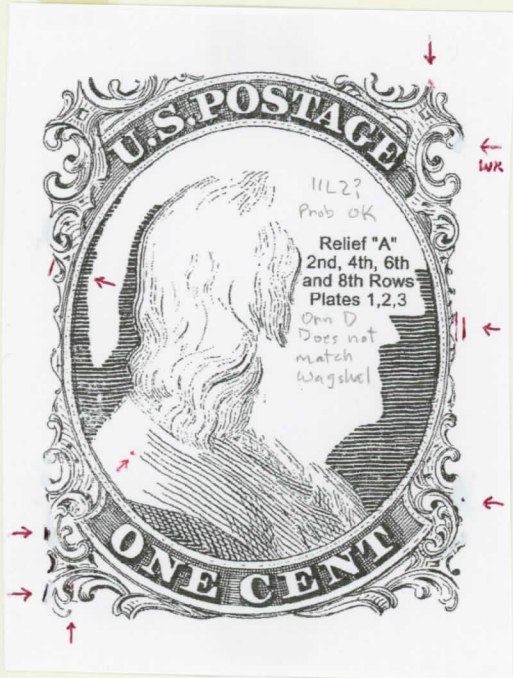


91R2

87R2

87-88R2

Neuken plated as 81-82R3
" mats for 81-82R3 drawn
from this pair.



86-87R2

50R2

50R2

msf

11L2

92R2

91R2

87R2

NJS

11L2



89L2



86L2

100L2

100L2

JAP scan has
orn D mark
as does Neuken mat



86L2

87L2

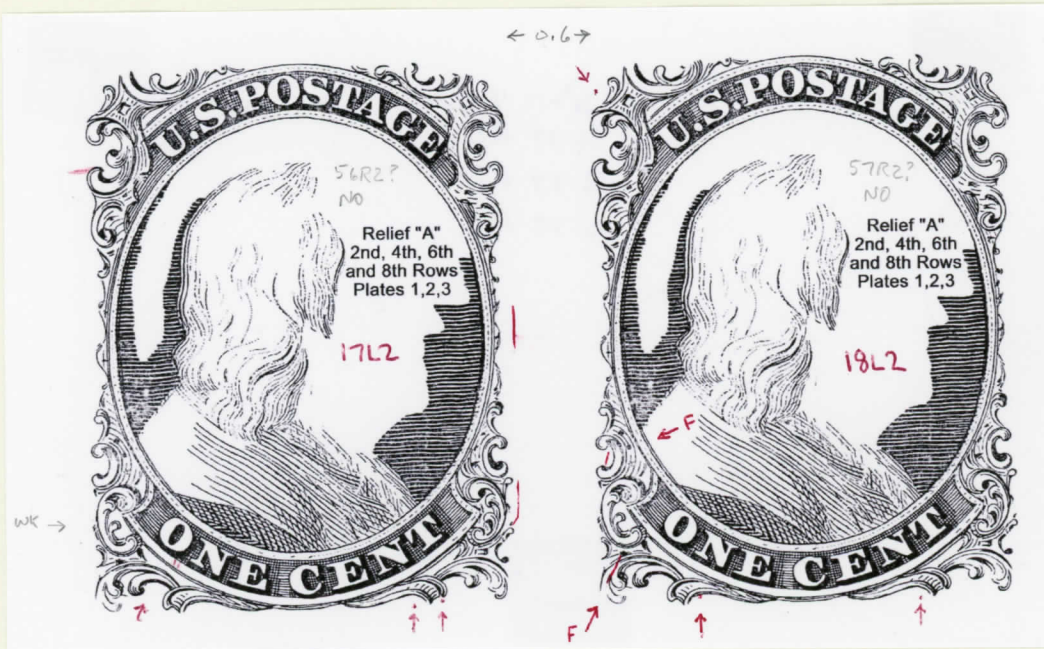


86L2



86L2

51R2



match
PSE scan
7/25/09

Plated as 56-57R2 but does not look right.
56R2 has DT UR corner

Could not find on P. 2
12/18/10
17-18L2
5/16/11

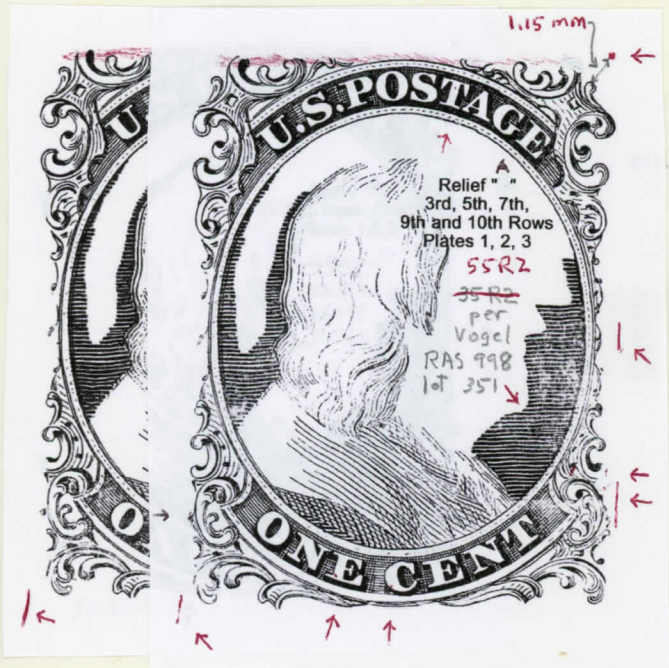
74L2

80L2

5L2

5-6L2

→ MSF



29R2
RAS 994
LOT 1054



78R2
RAS 994
LOT 1054