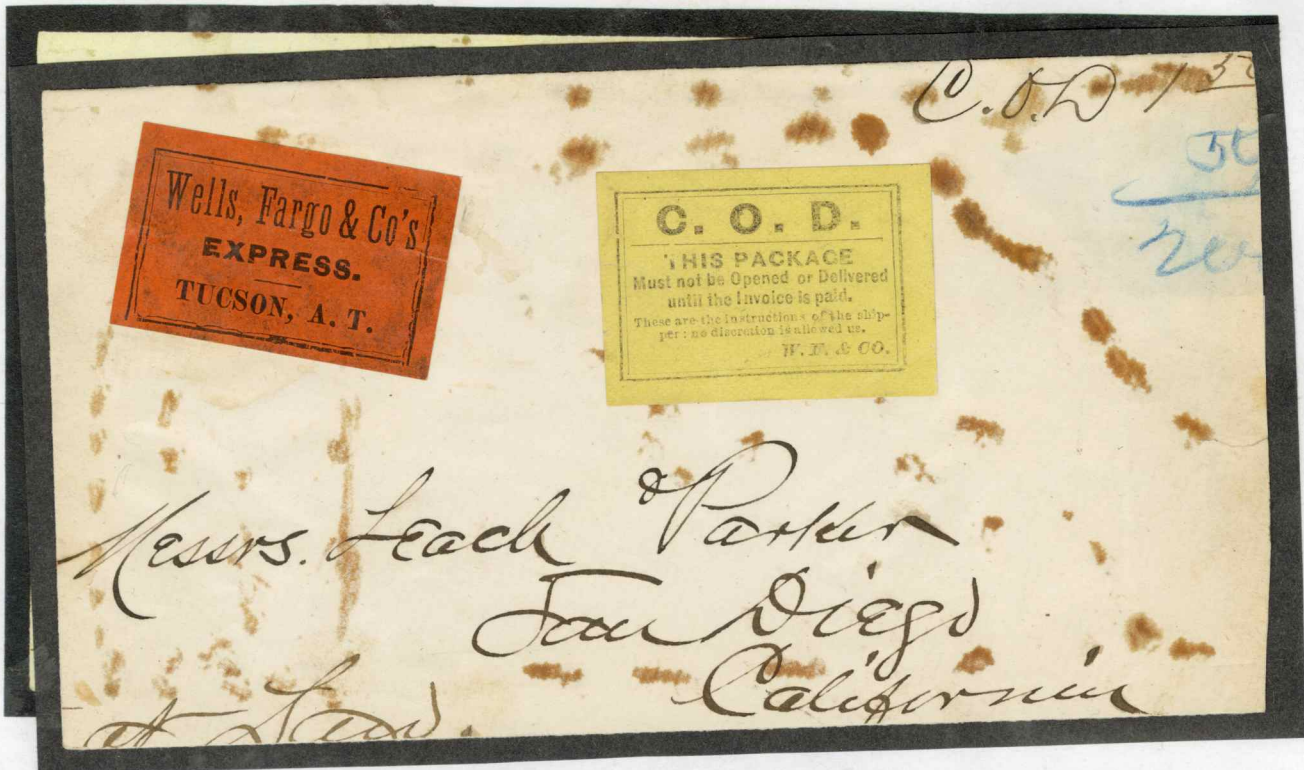


250-

WELLS, FARGO & CO.



TUCSON. CUT DOWN LARGE ENVELOPE CARRYING LEGAL PAPERS.
 C. O. D. CHARGE AT \$ 1.50 PLUS \$.50 EXPRESS CHARGE TO SAN DIEGO.

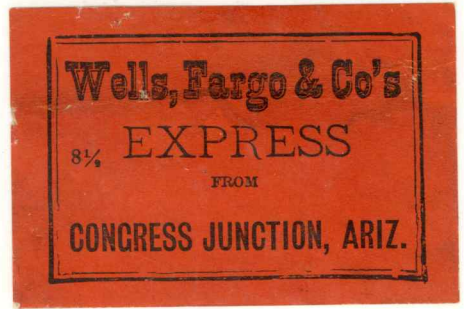
90-



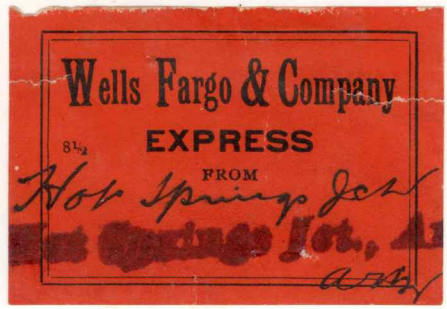
80.- each 320.

WELLS, FARGO & Co.

EXPRESS LABELS WERE ATTACHED TO LARGE MONEY OR LEGAL ENVELOPES OR ONTO WRAPPERS OF PACKAGES, FREIGHT, ETC.



CONGRESS JUNCTION, YAVAPAI COUNTY, WELLS, FARGO AGENTS 1898 to 1912



HOT SPRINGS JUNCTION, MARICOPA COUNTY, WELLS, FARGO AGENTS 1898 to 1910



MAYER, YAVAPAI COUNTY, WELLS, FARGO AGENTS 1899 to 1912