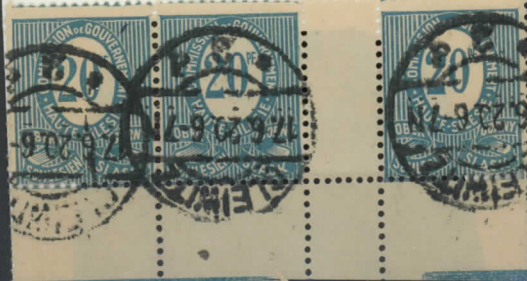


Altschalkowitz [G]

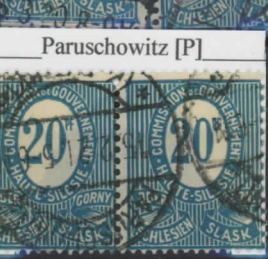
Cross-gutter strip  
Gleiwitz [G]

Vert.  
gutter  
block



Vert.  
gutter  
pair

Mi.  
6bZs  
Hor.  
sheet  
margin  
pair



[Breslau]-  
Myslowitz  
Bahnpost



Mis-  
perfed



Vert.  
gutter  
pair



Mi. 6cl  
H over  
ON in  
COM-  
MIS-  
SION



Fi./  
Mi.  
7a

Fi./  
Mi.  
7b



Shifted ovpts.



Offset



Type III and Type II in vertical gutter strip



Sans serif Pf.



Gleitwitz [G]

Type IV Serifed Pf. 11c



Shifted ovpts.



Type IV and Type I in vertical gutter pair



Offset



Overprint Error in 2<sup>nd</sup> Surcharge [Ovpt. on 5a-5b] Type I 10



Shifted ovpts.



Type II Serifed Pf. 10a



Sans serif Pf.

Type III Serifed Pf. 10b



Shifted ovpt.



Sans serif Pf.



Type IV Serifed Pf. 10c



Shifted ovpt.



Wronin [G]

Zaborze [P]



Antonienhütte [P]



Katscher [G]

Parcel  
post  
cancels



With  
18

Perfin  
A.B.



Sauerwitz [G]



Hor.  
gutter  
block of 6

Antonienhütte [P]

Beuthen [G]

Carlsruhe O/S [G]

Eichtrachthütte [P]

25



Gleiwitz [G]

Guttentag [G]

Hindenburg [G]

Imielin [P]



Kattowitz [P]

Landsberg O/S [G]

Nikolai [P]



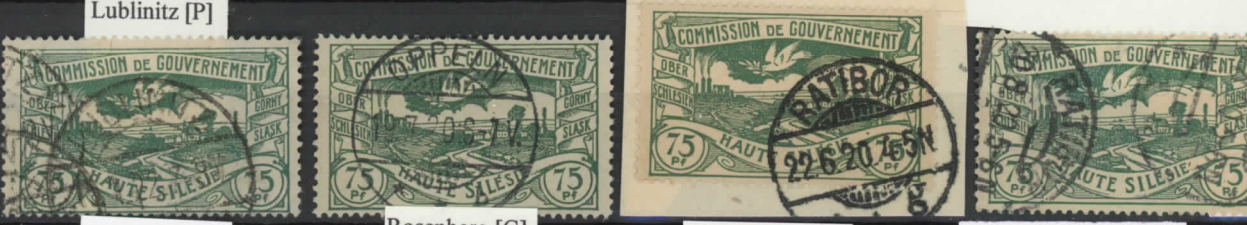
Ratibor [G]

Schoppnitz [P]

Sohrau [P]



26



27



Czernitz [P]



Friedrichsgrätz [G]



Haatsch [CZ]



Hindenburg [G]



Hohndorf [G]



Hochkretscham [G]



Imielin [P]



Jellowa [G]



Kasimir [G]



Kattowitz [P]



Keltsch [G]



Königshütte [P]



Konstadt [G]



Kornowatz [P]



Koschentin [P]



Kreuzenort [G]



Lendzin [P]



Lubie [G]



Lubschau [P]



Miedzna Grzawa [P]



Poppelau  
(Oppeln) [G]



Proskau [G]



Ratibor [G]



Roschkowitz [G]



Rösnitz [G]



Rudy-Piekar [P]



Rudzinitz [G]



Sandowitz [G]



Simmenau [G]



Tichau [P]



Tworog [G]



Walzen [G]





Plebiscite  
Surcharges  
Mar. 20, 1921  
[Ovpts. on  
18-28]  
32-42



40a  
Blue-  
green  
RARE



Fake ovpts:  
lower curve  
of 9 is open  
and does not  
touch the  
upper curve



Fake  
inv.  
ovpt.



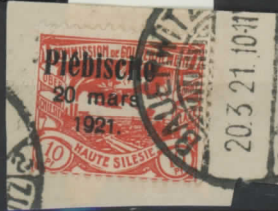
Fake  
"missing"  
ovpt."





Bauerwitz [P]

32



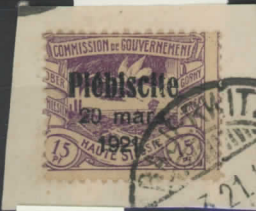
Shifted ovpt.



Hindenburg [G]

Bauerwitz [P]

33



Lenschütz [G]

Rybnik [P]



Badewitz [G]

34

Friedens-  
hütte [P]

Kreuzburg [G]

Ovpts.  
shifted



35

Rybnik [P]

Inv.  
ovpt.



36

Friedens-  
hütte [P]

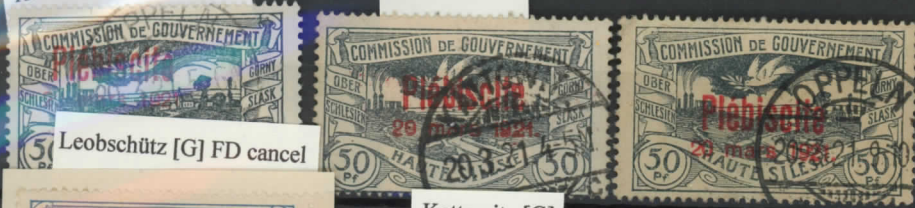
37



38

Kattowitz [P] FD cancel

Kattowitz [G]



Leobschütz [G] FD cancel

39

Kattowitz [G]



40

Kattowitz [P] FD cancel



41

Kattowitz [P] FD cancel



42

Kattowitz [P] FD cancel

Leobschütz [G] FD cancel



Green Post  
3rd Insurrection  
Speculative Issue  
May 1921  
Perforate  
[5355 issued]



Imperf.  
[5355  
issued]



6th Official  
May 1921  
[Ovpt. on  
Germany  
09]  
046





Used



Rybnik [P]

[ ]-  
Leobschütz-  
Gogolin  
Bahnpost [NL]

Leob-  
schütz [G]

Gleiwitz [G]

Beuthen [G]

Vars.



Parcel  
post  
cancel



Large  
type:  
Fake?



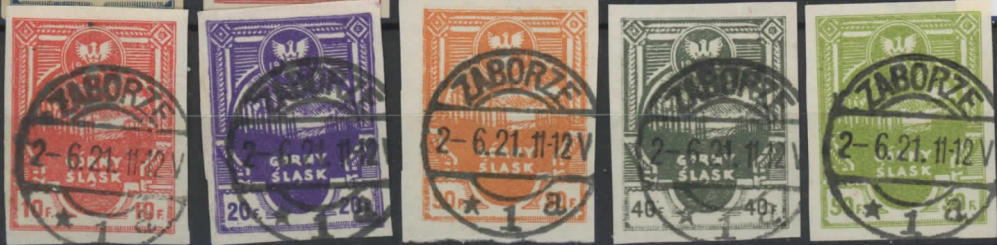
Korfanty  
Insurrection  
Issue  
June 14, 1921  
Mi. I-VII



Smudged  
left side



Imperf.,  
Cancelled  
Zaborze [P]





Priv.  
perf.



Perf.  
cancelled  
Schop-  
pinitz [P]



7<sup>th</sup> Official  
Sept. 1921  
[Ovpt. on  
Germany  
O11]  
O48



**POLAND**  
 Issue for Upper Silesia  
 June 18, 1922-April 12, 1923

1<sup>st</sup> Issue  
 June 19, 1922  
 [Fi. May 29]  
 170-175



Königshütte  
 [Krolewska-Huta]

170



Königshütte  
 [Krolewska-Huta]

171



Shades



172



Looks like  
 Bielkowice  
 but that city,  
 Bilkivtsi, is  
 in Ukraine.

Königshütte  
 [Krolewska-Huta]

Krolewska-  
 Huta  
 [Königshütte]

Chebzie  
 [Morgenroth]

Cieszyn  
 [Teschen]

Georgenberg  
 [Miasteczko  
 Śląskie]

Loslau  
 [Wodzisław  
 Śląskie]

Pawonków  
 [Pawonkau]

Strzlee  
 [Gross  
 Strehlitz]

Świętoch-  
 lowice  
 [Schwien-  
 tochlowitz]

173



Bogut-  
 schütz  
 [Bogocice]

Chebzie  
 [Morgenroth]

Königshütte  
 [Krolewska-Huta]



Gummed  
 on both  
 sides



Shades



*Red fruit*



Königshütte  
[Krolewska-Huta]

Königshütte  
[Krolewska-Huta]

Kattowitz  
[Katowice]

Gleiwitz  
[Gliwice]

Świerklaniec  
[Neudeck]

Königshütte  
[Krolewska-Huta]

10,00

174



Shades



Katowice  
[Kattowitz]

Königshütte  
[Krolewska-Huta]

Königshütte  
[Krolewska-Huta]

175



7, 50

15,00



Shades



Thick wove paper  
171, 173  
vars.



171

173

Later Issue?  
July 1922  
176-180,  
182



Baranowitz  
[Baranowice]

Kattowitz  
[Katowice]

Katowice  
[Kattowitz]

Königshütte  
[Krolewska-Huta]

Wirek  
[Antonienhütte]

176



Shades



177



Katowice  
[Kattowitz]

Krolewska-Huta  
[Königshütte]



Gleiwitz  
[Gliwice]

Shades



Katowice  
[Kattowitz]



Königshütte  
[Krolewska-Huta]

178



Königshütte  
[Krolewska-Huta]



Krolewska-Huta  
[Königshütte]



Loslau  
[Wodzisław  
Śląskie]



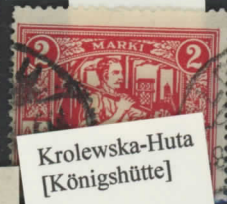
Wirek  
[Antonienhütte]



Georgenberg  
[Miasteczko Śląskie]



Königshütte  
[Krolewska-Huta]



Krolewska-Huta  
[Königshütte]



Myslowitz  
[Myslowice]



Shade

Rybnik  
[Rybnik]

179



Świętochłowice  
[Schwientochlowitz]



Tarnowitz  
[Tarnoskie Góry]



Tarnoskie Góry  
[Tarnowitz]



Zawodzie  
[Zawada]



Kattowitz  
[Katowice]



Krolewska-Huta  
[Königshütte]



Myslowitz  
[Myslowice]

Radzionka  
[Radzionków]

180



Świętochłowice  
[Schwientochlowitz]



[182]  
SCARCE

Reissue  
Pelure  
N.d.  
Perf. 12.5  
176, 179-185  
vars.

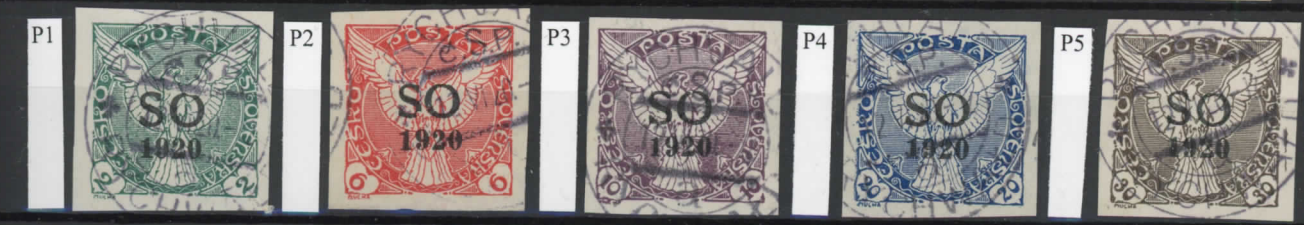


[4 Mk.]  
SCARCE





Newspaper  
Overprints  
1920  
[Ovpts. on  
P1, 3-6]  
P1-P5



Polish Sector  
April 15, 1920

Fenig Overprints  
[Ovpts. on 82-84, 86-87]  
41-45  
Type I:  
2.7mm between lines  
Thin white paper





Newspaper  
Overprints  
1920  
[Ovpts. on  
P1, 3-6]  
P1-P5



Polish Sector  
April 15, 1920

Fenig Overprints  
[Ovpts. on 82-84, 86-87]  
41-45  
Type I:  
2.7mm between lines  
Thin white paper



Top left  
stamp  
with Fi.  
86 B1:  
Y for H  
at right

