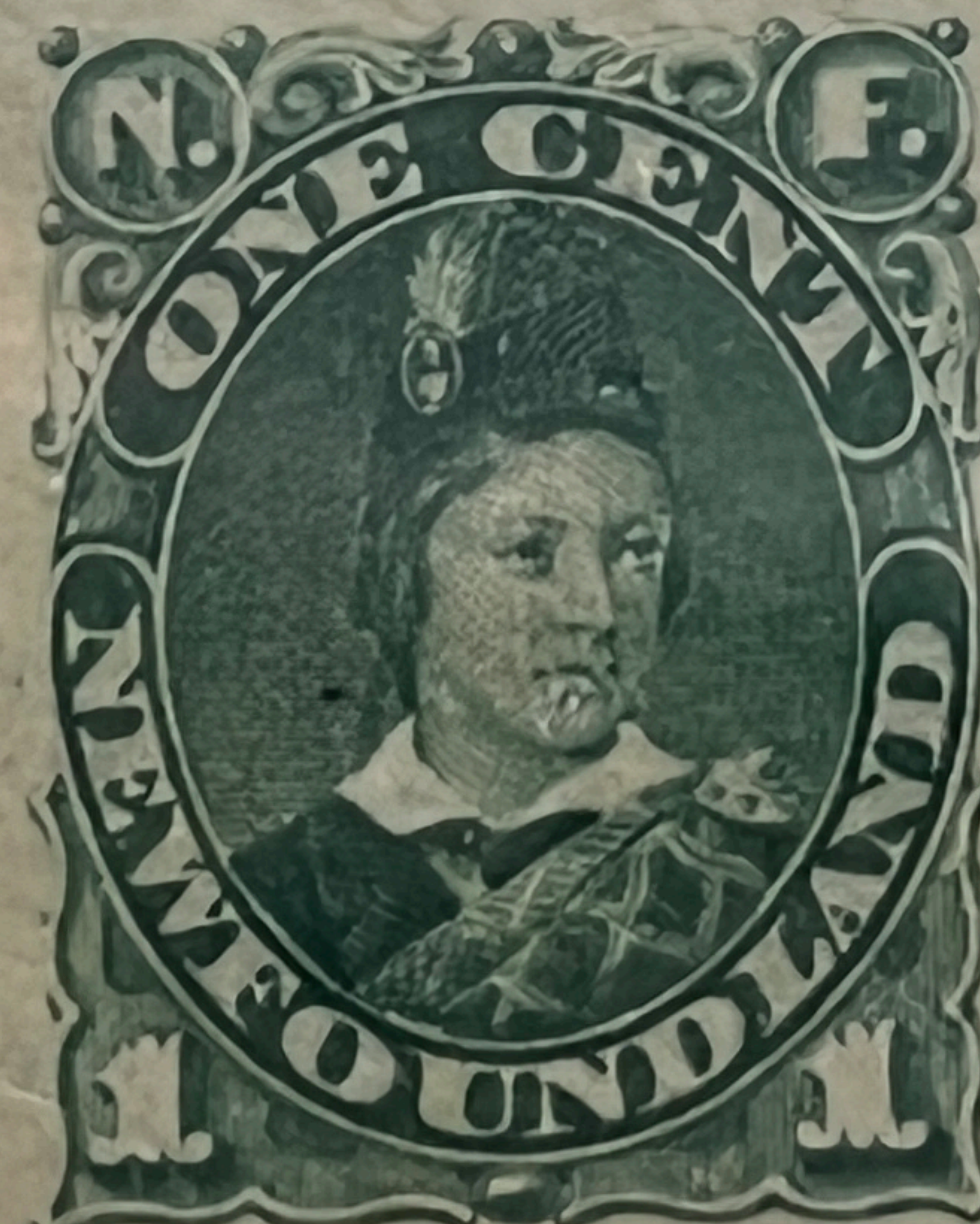
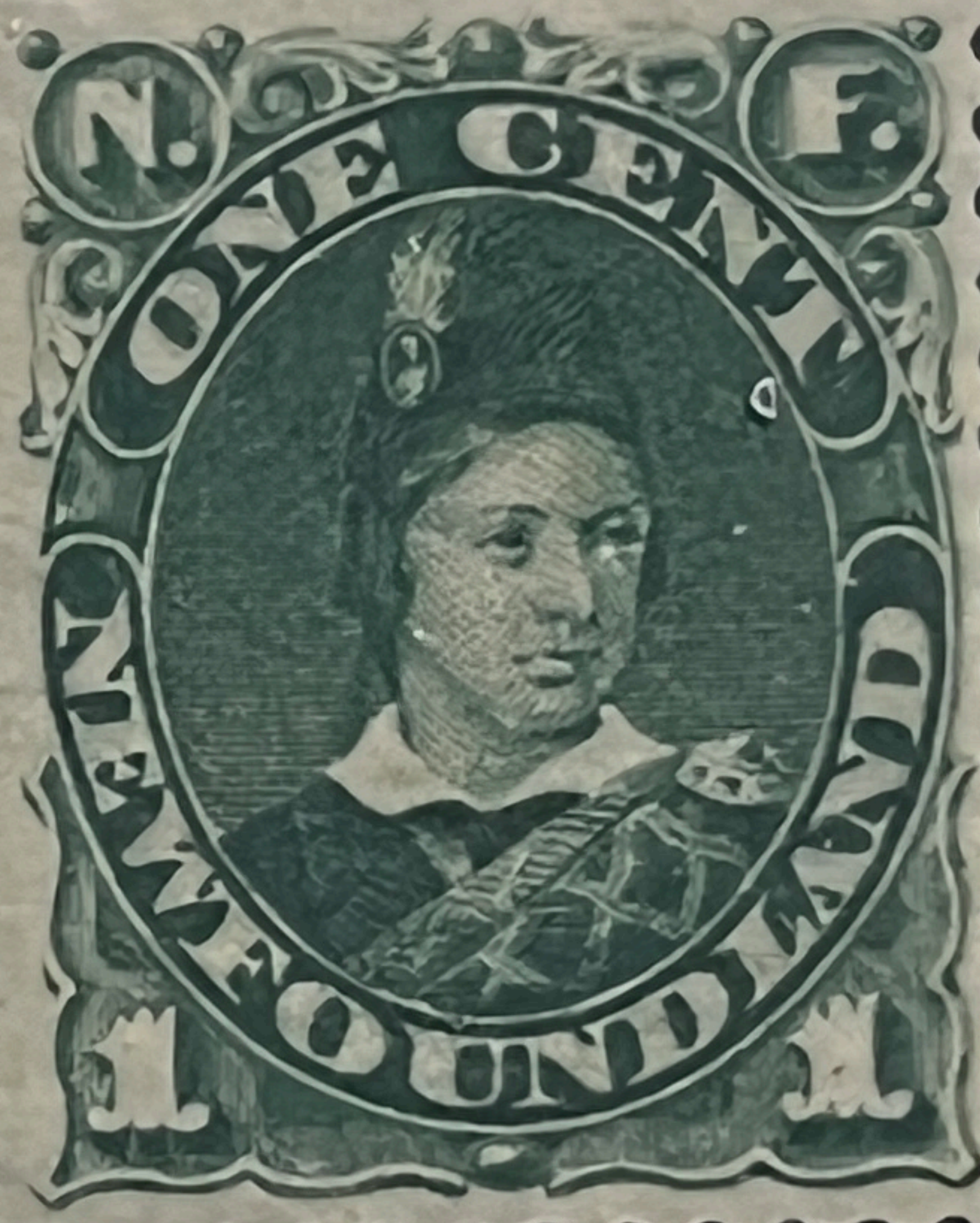
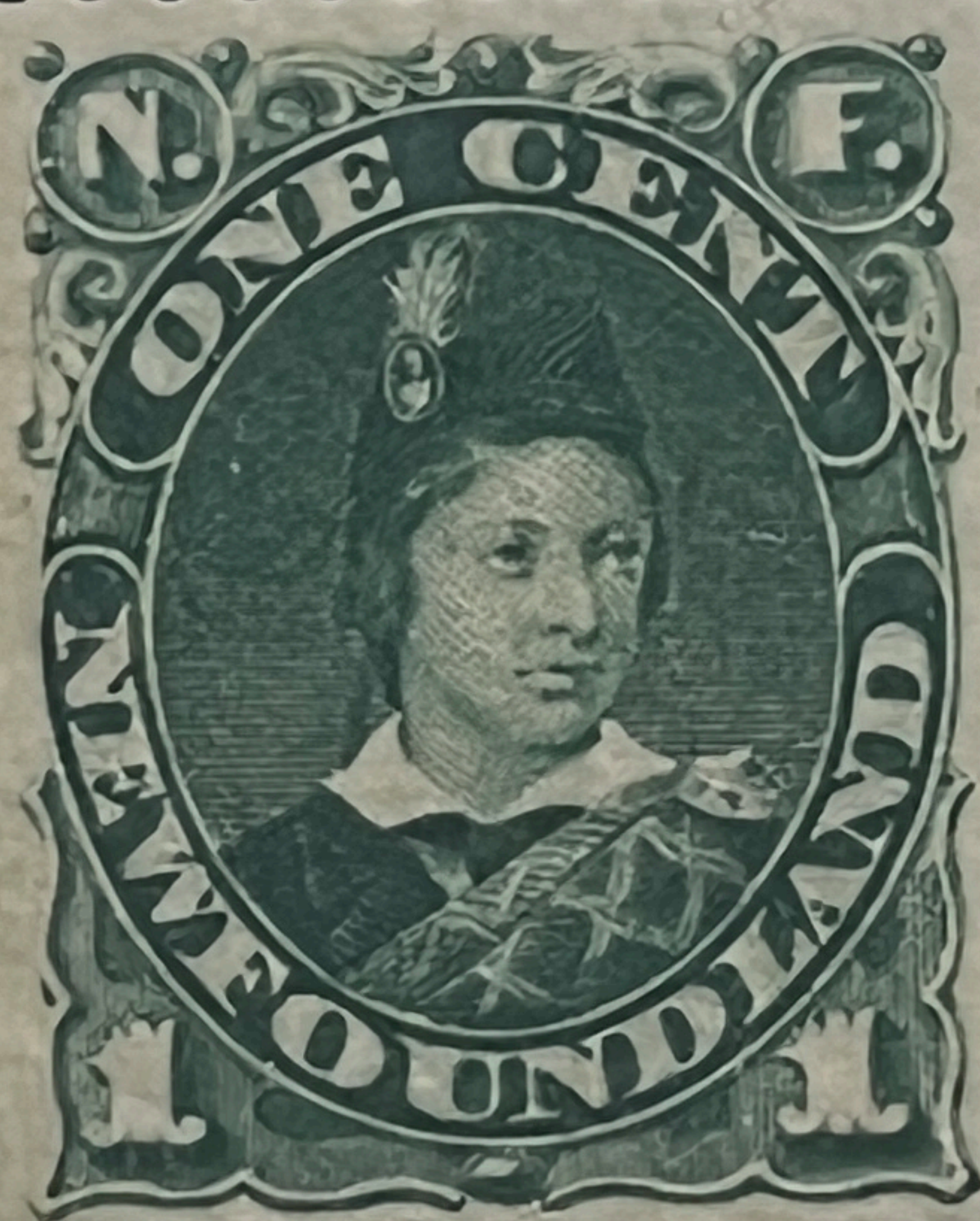


Schuyler Rumsey Auctions, Inc.

2601

Newfoundland, Mint Blocks, 1887-1900
Sale No. 101, April 21-24, 2022. Item 2601

British American Bank Note Co Montreal



3

5





nd 5-cent
stamp C

2000 edition listed the two at a

1897 RO

#80 a. c
the New
on block

Tr in Sc to

OWNER
ZLOS
BUM
T

2303

GM
le in
many

1377

The Cuttyhunk Shipwreck of 1908

In April 1908, the American Bank Note Co. of New York shipped a consignment of the 2c Red and the 5c Blue (Scott#82 and #85) on board the SS SYLVIA destined for St. John's. The ship, however, was wrecked en route and the Red's & Blue's were washed ashore on the Island of Cuttyhunk, Mass. The Newfoundland Post Office immediately sent officials to recover the stamps but some gum soaked or ungummed sheets later came on the market. In Sept, 1908 the Post Office issued another 2c stamp (Scott#86) probably to protect itself against the loss of revenue through the sale of the missing shipwrecked stock.



NO
PRICE

1923-24 PICTORIAL ISSUE

There are 14 different values in this set. The first 17 blocks are comb-perforated, including shades of the 2, 6 and 11¢. The balance (with 4 shades of the 2¢) are line-perforated, with one duplicated block of the 20¢. The line-perforated 24¢ has separated into two NH pairs.



LN 11203 (100)

210
SEE NEXT PAGE



14.2x
14.2

14.2x
14

14.2x
14.2

LIVE

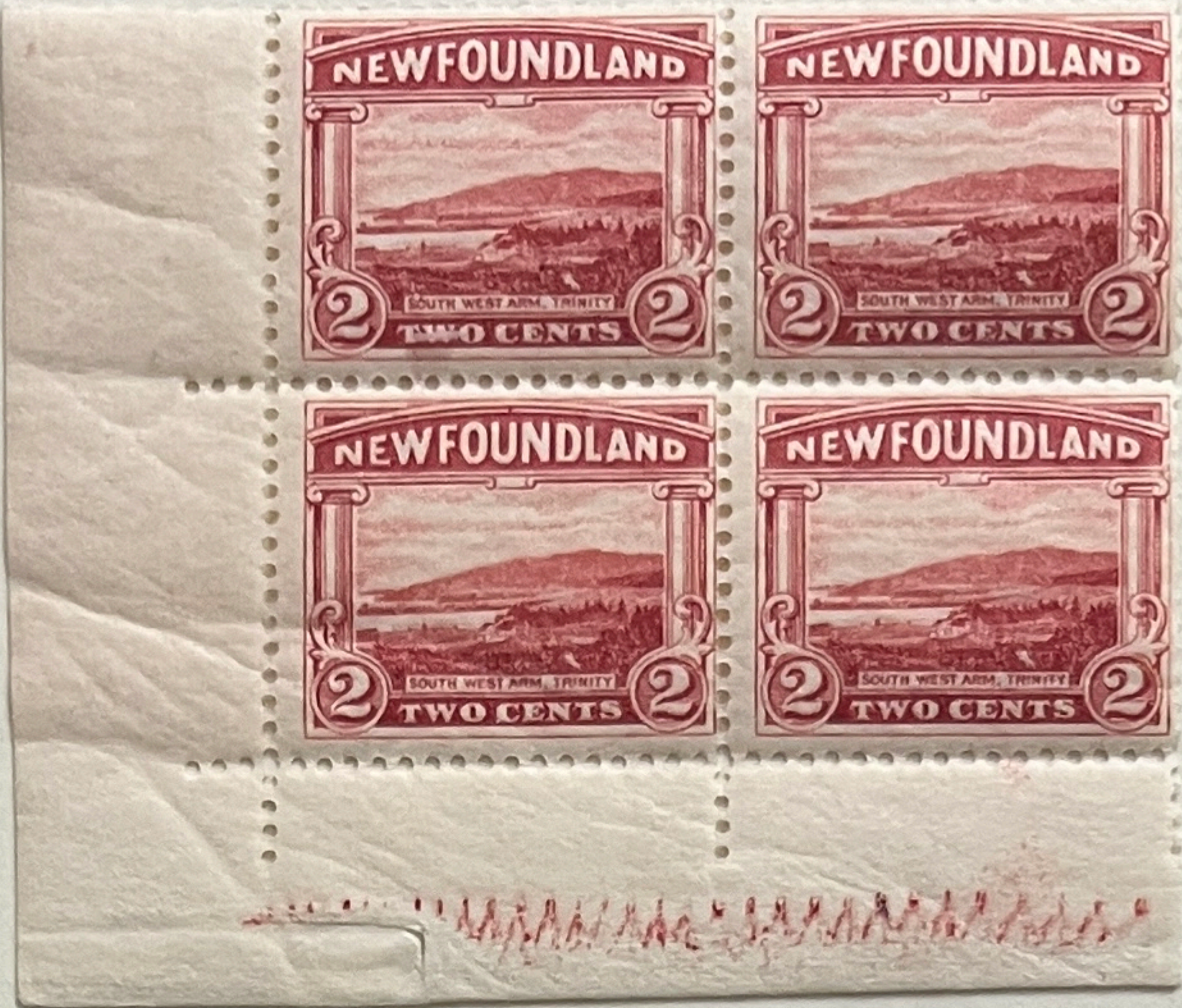
u

218 32

14x
14.2

14x
14.2

14.2
x14



14.2 x
14.2
← BRIGHT BLUE



14.2 x
← 14.2



Comp
d.18.

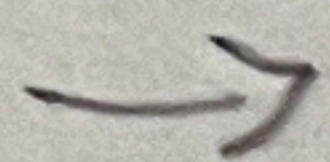
live
dup

duplicate →

AL 242



128 14 exhibit





duplicate

145-159

9 940
329
978 587

1929 PUBLICITY ISSUE
Re-engraved



20

200

20

23

242

1931 PUBLICITY ISSUE

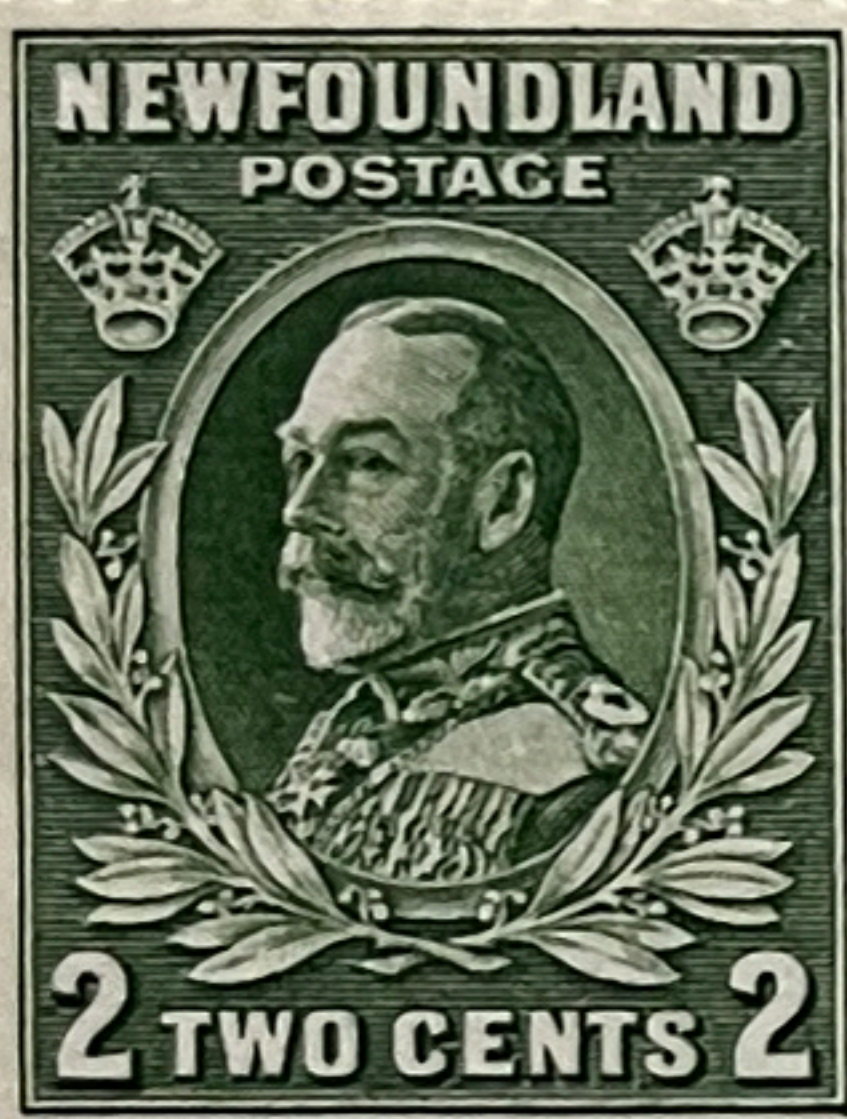
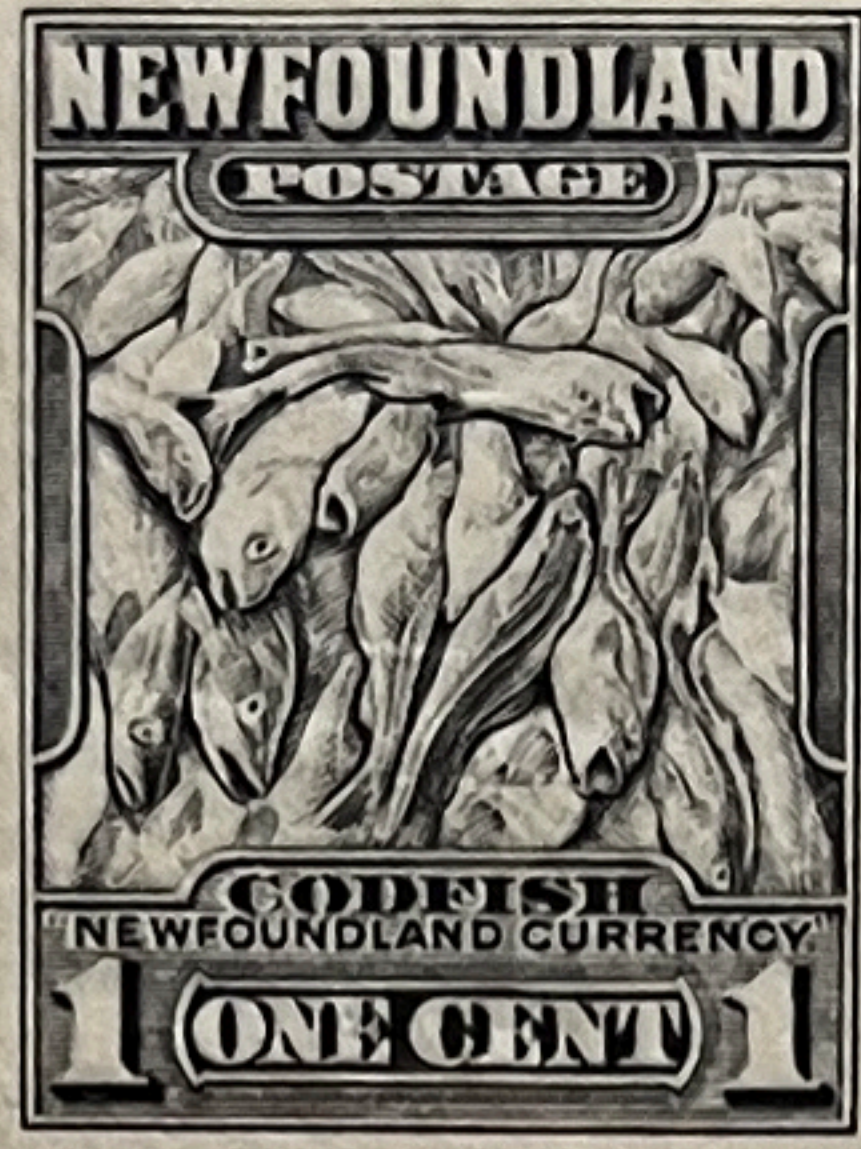
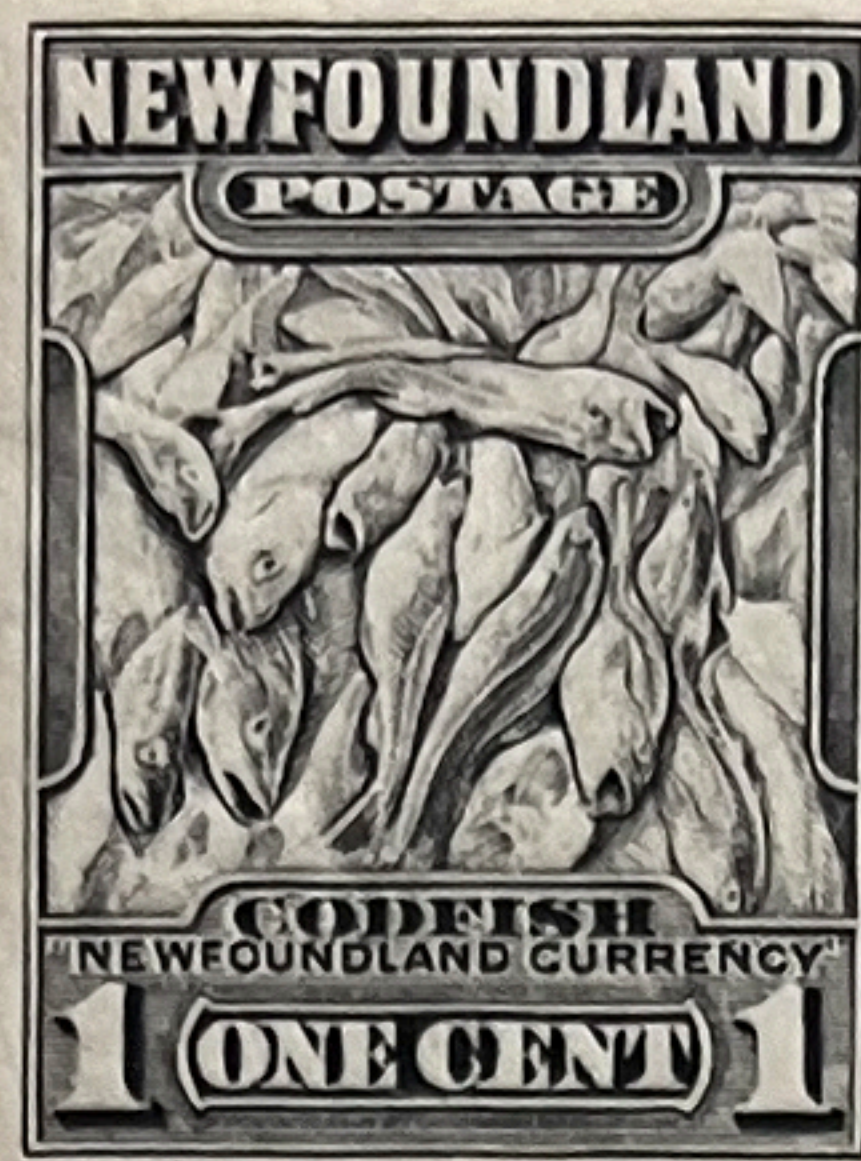
Re-engraved and Watermarked



2+2



THIS SET NA



ALL
NH



CCMB

NH

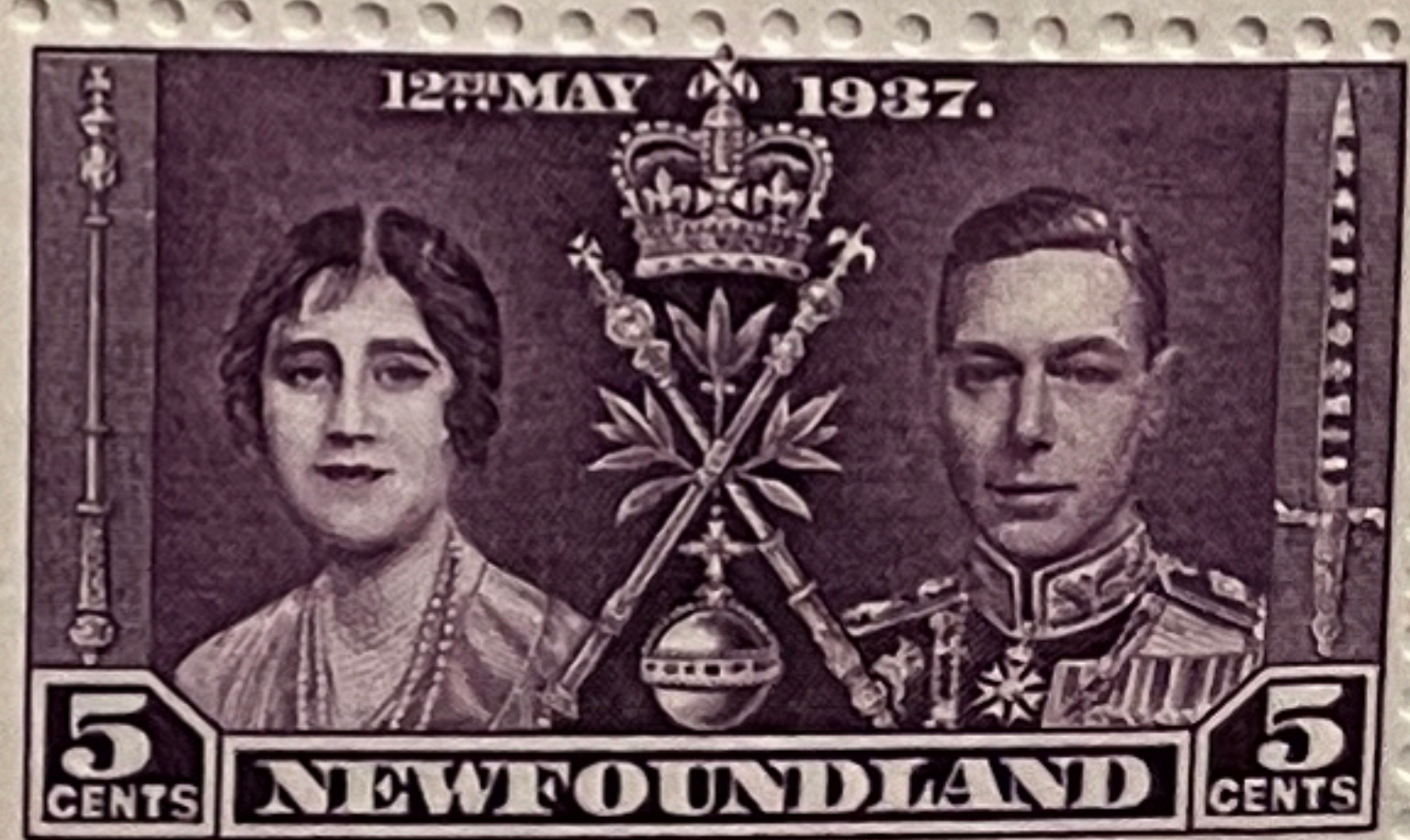


COMB

NH



ALL DIT



ALL NZ

200

14.1 x 14.1
+
13.7 x 13.7



14.1 x 14.1

14.1 x 14.1

14.1 x 14.1

154



VARIETY OF THE 1929 SURCHARGE – SCOTT 160, NSSC 164
AND 164A

On three positions of the setting, the “C” of “CENTS” is below the “T” of
“THREE”. The lower right is Position #23.



VARIETIES OF THE 1939 SURCHARGES

Newfoundland Specialized Stamp Catalogue:

#236a, 2 cent without serif (lower right)

#237a CENTL for CENTS, (lower left)



LINE

ALL PA



12

SET #102

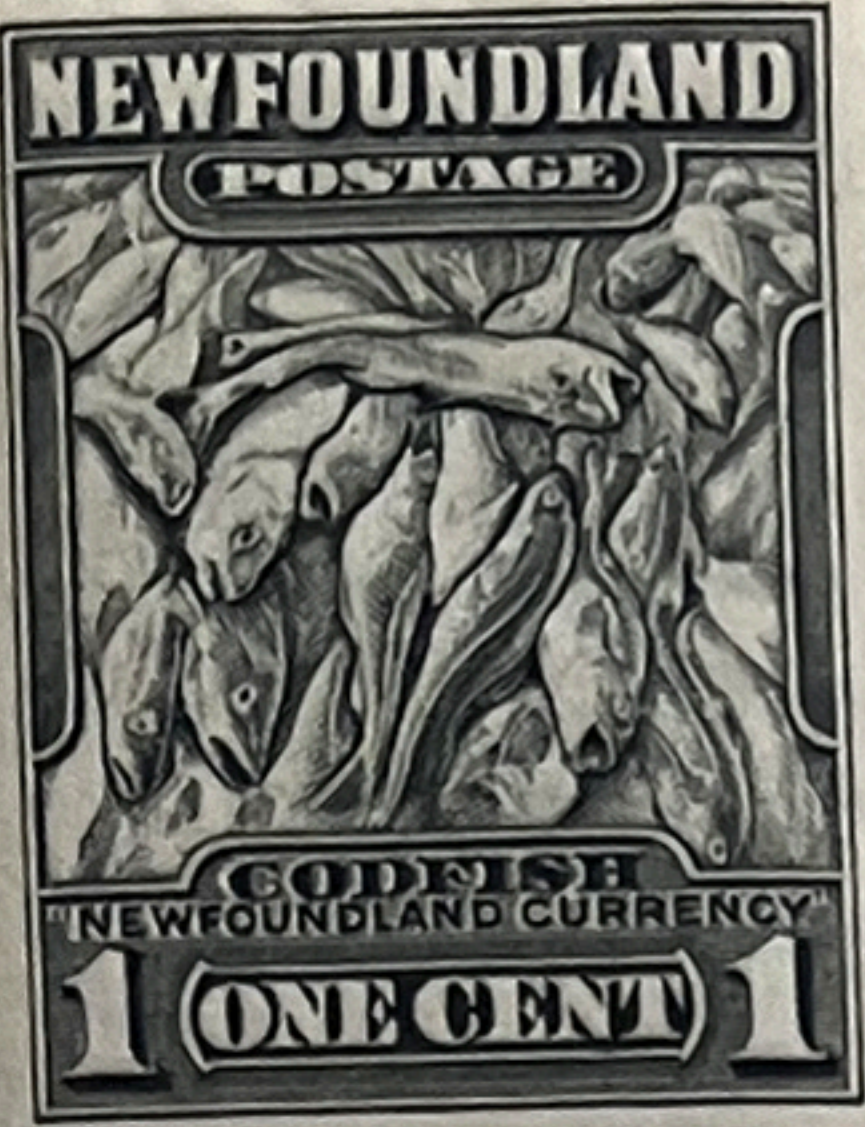


MSR-922

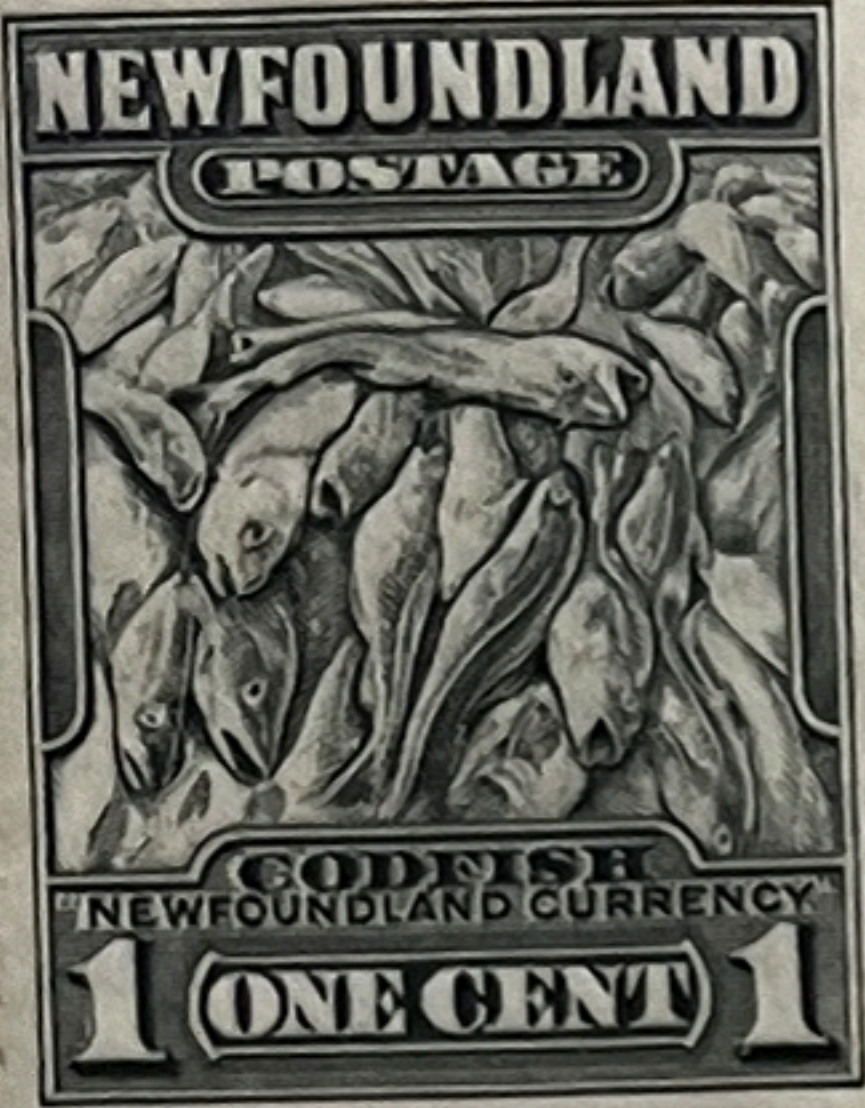
410

OWNER
ZLOS
BUM
2412
GM
de in
many

pk



43966



43965

43967



41789



41794

41796



ALL N.H.

10.3 x 10.3

10.3 x 10.3

10.4 x 10.3

NEWFOUNDLAND POSTAGE DUES

1939: J1-J6 + J5i.
J3 is perf 10.3 x 10.3.
J4 is perf 10 x 10.



J5i
UNITRADE



1949: The Last Issues
Of Newfoundland,
J1a-J4a + J7.



SCOTT'S 697
TOTAL SETS
EXTRA SHADE 5¢