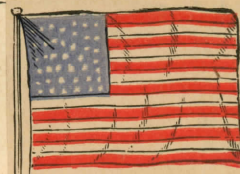


UNITED STATES

GENERAL ISSUES, POSTAGE STAMPS.





United States.

1847.

5 c. BROWN.	10 c. BLACK.	Re-engraved by the Govern- ment in 1875. 5 c. BROWN.	10 c. BLACK.
No. 1.	No. 2.	No. 3.	No. 4.

1851-56.

		5 c. BROWN.	10 c. GREEN.	12 c. BLACK.	24 c. LILAC.
		No. 7.	No. 8.	No. 9.	No. 10.

1857.

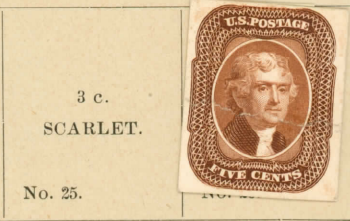
Same, unperforated with ornaments at bottom cut off. 1 c. BLUE.	Same, perforated. 1 c. BLUE.	Without the outer line, perforated. 3 c. RED.	With ornaments at bottom, perforated. 1 c. BLUE.	With outer line, perforated. 3 c. RED.	With ornaments complete. 5 c. BROWN.
No. 11.	No. 12.	No. 13.	No. 14.	No. 15.	No. 16.

1857-60.

With ornaments complete. 5 c. RED-BROWN.	Ornaments at top and bottom cut off. 5 c. BROWN.	10 c. GREEN.	12 c. BLACK.	24 c. LILAC.	30 c. ORANGE.
No. 17.	No. 18.	No. 19.	No. 20.	No. 21.	No. 22.

1860.

GOVERNMENT REPRINTS.



United States.

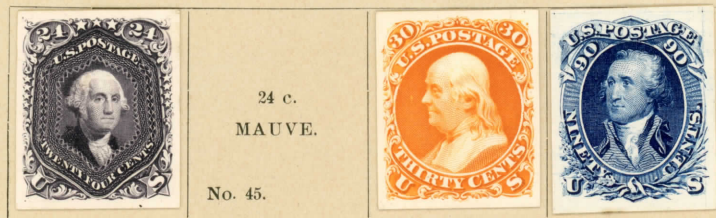
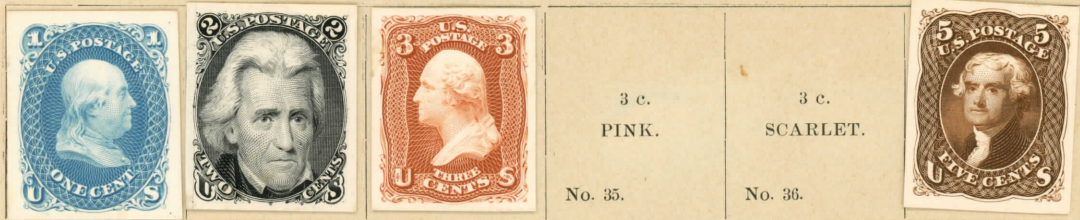
GOVERNMENT REPRINTS.



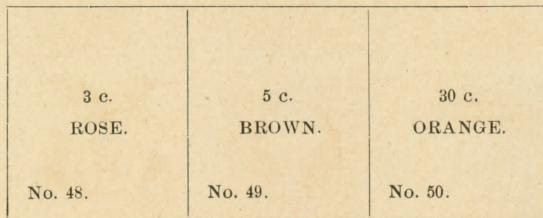
\$4254

UNITED STATES.

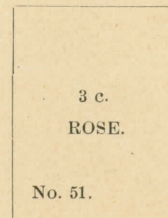
1861-66.



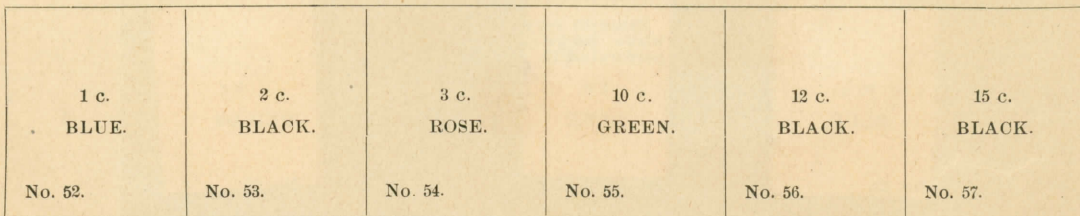
1867.
GRILLE, COVERING THE ENTIRE STAMP.



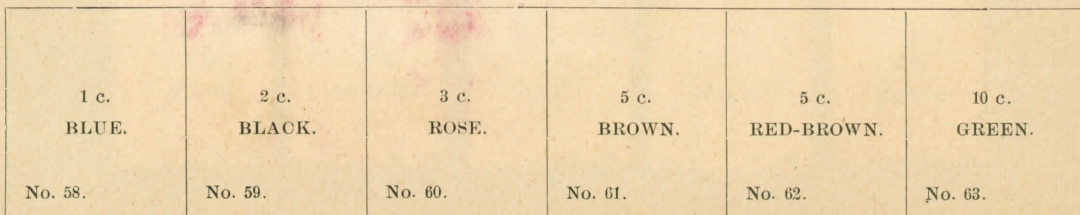
1868.
GRILLE, 12½x16 MM.



1868.
GRILLE 11x13 MM.



1868.
GRILLE, 9x13 MM.



UNITED STATES.

1868.

GRILLE 9x13 MM.

12 c. BLACK.	15 c. BLACK.	24 c. LILAC.	30 c. ORANGE.	90 c. BLUE.
No. 64.	No. 65.	No. 66.	No. 67.	No. 68.

GOVERNMENT RE-ISSUE UNGRILLED.

Without grille, on very white paper.					
1 c. BLUE.	2 c. BLACK.	3 c. BROWN-RED.	5 c. LIGHT BROWN.	10 c. GREEN.	12 c. BLACK.
No. 69.	No. 70.	No. 71.	No. 72.	No. 73.	No. 74.

15 c. BLACK.	24 c. DEEP VIOLET.	30 c. BROWNISH- ORANGE.	90 c. BLUE.
No. 75.	No. 76.	No. 77.	No. 78.

1869.

GRILLE 9x9 MM.

					
No. 79.	No. 80.	No. 81.	No. 82.	No. 83.	No. 84.

15 c. BROWN AND BLUE.			30 c. BLUE AND CARMINE.	90 c. BLACK AND CARMINE.
No. 85.	No. 86.	No. 87.	No. 88.	No. 89.

SAME, WITH CENTER INVERTED.

15 c. BROWN AND BLUE.	24 c. GREEN AND BLACK.		
No. 90.	No. 91.	No. 92.	No. 93.

\$1015-

UNITED STATES.

GOVERNMENT RE-ISSUE UNGRILLED.

1 c. BUFF. No. 94.	2 c. BROWN. No. 95.	3 c. BLUE. No. 96.	6 c. BLUE. No. 97.	10 c. YELLOW. No. 98.
--------------------------	---------------------------	--------------------------	--------------------------	-----------------------------

12 c. GREEN. No. 99.	15 c. BROWN AND BLUE. No. 100.	24 c. GREEN AND BLACK. No. 101.	30 c. BLUE AND CARMINE. No. 102.	90 c. BLACK AND CARMINE No. 103.
----------------------------	--------------------------------------	---------------------------------------	--	--

1870.

GRILLE 10x12½ MM.



GRILLE 8½x10½ MM.

1 c. ULTRAMARINE. No. 115.		7 c. VERMILION. No. 118.
	3 c. GREEN. No. 117.	

WITHOUT GRILLE.

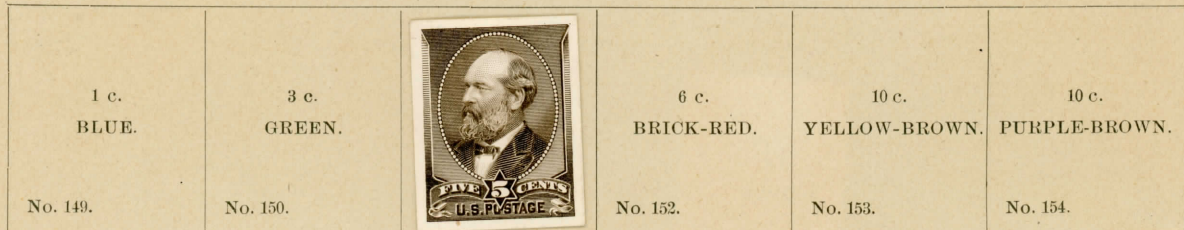
1 c. ULTRAMARINE. No. 119.	2 c. BROWN. No. 120.	3 c. GREEN. No. 121.	6 c. COCHINEAL-RED. No. 122.	7 c. VERMILION. No. 123.	10 c. CHOCOLATE. No. 124.
----------------------------------	----------------------------	----------------------------	------------------------------------	--------------------------------	---------------------------------

UNITED STATES.

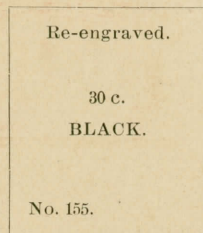
1875.



1882-86.
RE-ENGRAVED.



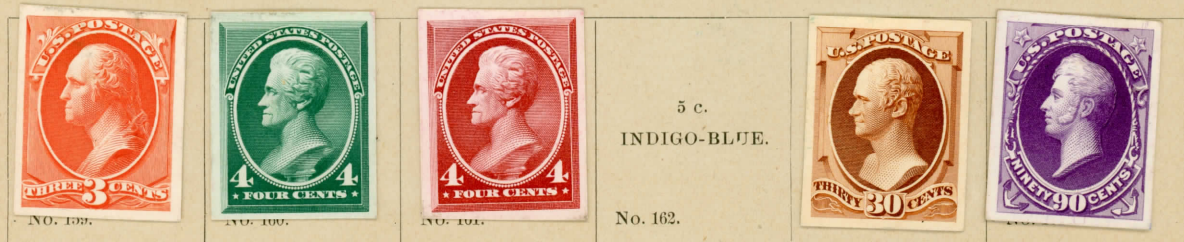
1886.



1883-87.



1883-88.

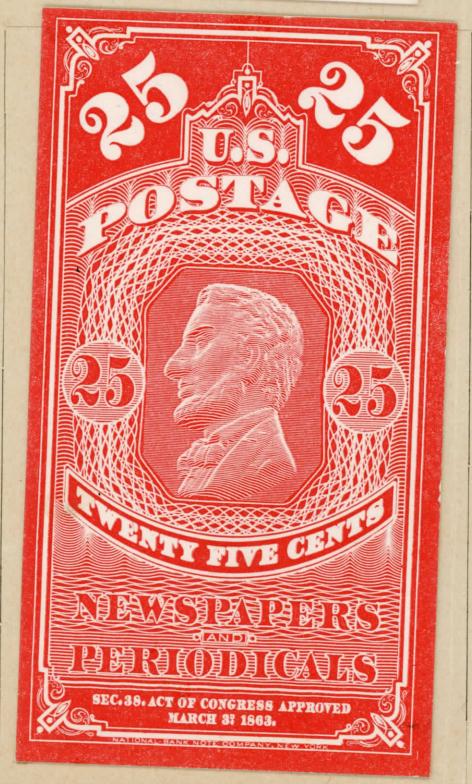
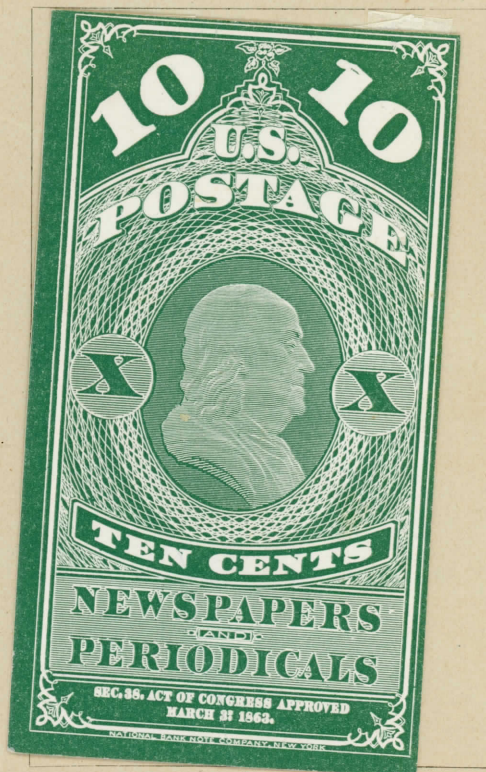
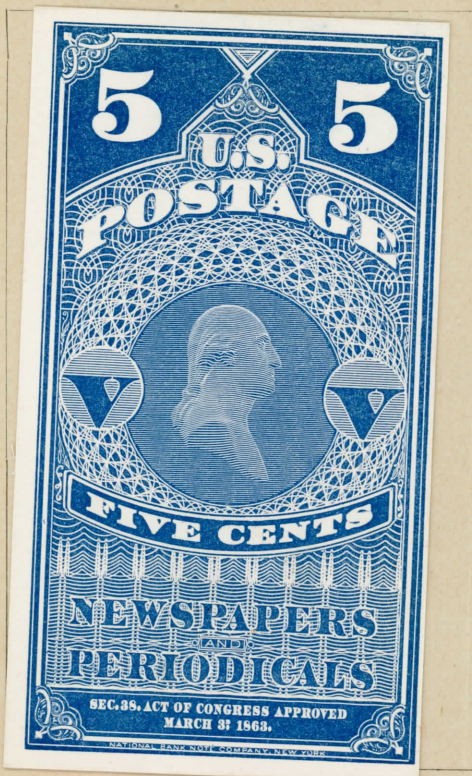


1890-92.



UNITED STATES.
NEWSPAPER STAMPS.

1865-67.



White Border.

5c.

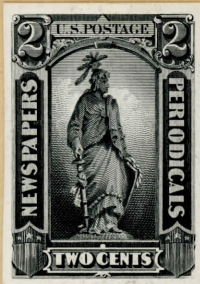
BLUE.

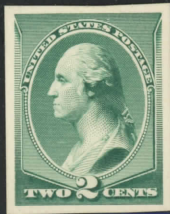
No. 403.

ISSUE

1874

NEWSPAPERS *and* PERIODICALS





UNITED STATES.
POSTAGE DUE STAMPS.

1894.



DEEP CLARET.

No. 925.



UNITED STATES.

OFFICIAL STAMPS.

1873.

DEPARTMENT OF AGRICULTURE.



EXECUTIVE DEPARTMENT.



DEPARTMENT OF THE INTERIOR.



DEPARTMENT OF JUSTICE.

1 c. PURPLE.	2 c. Same.	3 c. Same.	6 c. Same.
No. 1024.	No. 1025.	No. 1026.	No. 1027.

UNITED STATES.

1873.

DEPARTMENT OF JUSTICE.



NAVY DEPARTMENT.



POSTOFFICE DEPARTMENT.

1 c. BLACK	2 c. Same.	3 c. Same.	6 c. Same.
No. 1045.	No. 1046.	No. 1047.	No. 1048.

10 c. Same.	12 c. Same.	15 c. Same.	24 c. Same.	30 c. Same.	90 c. Same.
No. 1049.	No. 1047a.	No. 1048a.	No. 1049a.	No. 1050.	No. 1051.

POSTOFFICE SEAL STAMP.

1872.



Used for Packets of Registered Letters.
GREEN.

No. 1054.

UNITED STATES.

P. O. OFFICIALLY SEALED STAMPS.

1877.

Officially Sealed.
(Post Obitem.)
BROWN.

No. 1055.

1879.



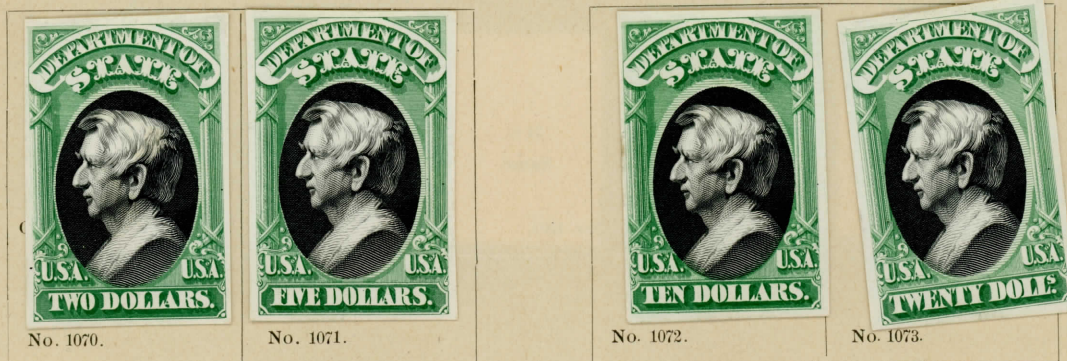
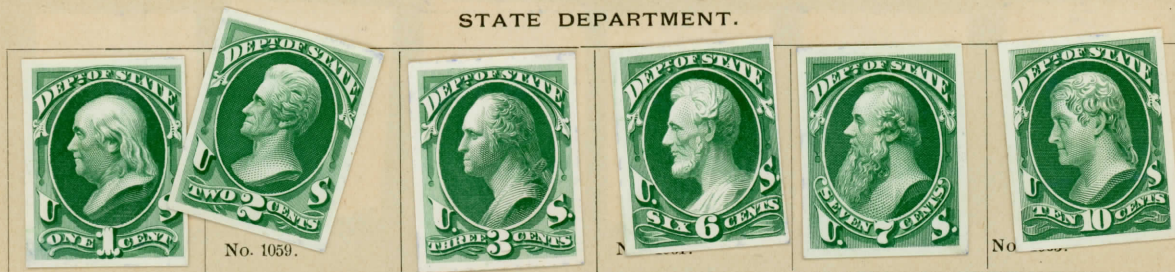
No. 1056.

1888.

Officially Sealed.
Lithographed.
PUCE.

No. 1057.

STATE DEPARTMENT.



UNITED STATES.

1873.

TREASURY DEPARTMENT.



WAR DEPARTMENT.



No. 710.

No. 711.

No. 712.

No. 713.

