

Original collector bought from  
Mandel for \$25 - 11/19/59  
These marked \* were in this group.

# KINGDOM OF HAWAII



1853  
ENGRAVED  
VERY THICK PAPER  
KING KAMEHAMEHA III



\* BLUE  
#5 - 400 - cost 70.00 \*



DARK RED  
#6 - 250 - cost 35.00 \*



MANUSCRIPT "5"  
#7 - 2250 - cost 900.00  
Bought mandel 8/28/72  
PPC # 38955

1857  
VERY THIN WHITE WOVE PAPER



# 8 - 225 - cost 50.00 \*



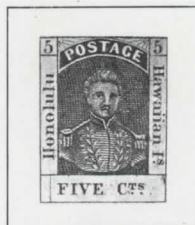
# KINGDOM OF HAWAII



1861  
BLuish WOVE PAPER



#9-100<sup>00</sup> Cat 18<sup>50</sup> \*



#8 Cat. 500 - Cost 325<sup>00</sup>  
LINE THROUGH STAMP AREN'T 11/10/77  
"HONOLULU" VERY FINE?  
SMALL THING?

1868  
REISSUE OF 1853  
ORDINARY WHITE WOVE PAPER



#10-12<sup>50</sup> Cat 5<sup>00</sup> \*



#11-150<sup>00</sup> Cat 37<sup>50</sup> \*



# NUMERALS



1859



2¢ Light Blue  
on Bluish-White

First Setting

#13 CAT 600 - COST 475 -  
SIEGEL - SEALED TEAR RIGHT  
IN MARGIN - BARELY  
EXTENDS TO INNER  
FRAME LINE



1¢ Light Blue  
on Bluish-White

Second Setting

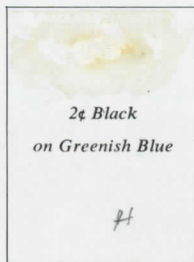
#12 - CAT 1400 - COST 1200 -  
STAMP PAGES PFC 45351  
VF - TINY TEAR IN MARGIN  
COST OF PFC 16.00  
PLATE 2A, I (POS 3)

1862

Third Setting



#16 - 300<sup>00</sup> lot 50<sup>00</sup> \*



2¢ Black  
on Greenish Blue

#14 - 1500 lot 390 -  
Bought November 10/3/93  
PFC # 43133

1863

Fourth Setting



#15 - 150<sup>00</sup> lot 2500 \*

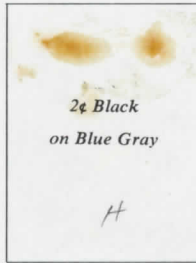


# NUMERALS



1864

Fifth Setting



#18 - 500 - Cat 295  
Bought 6/28/72 Mandel  
APS - # 9924



#17 CAT 2500 - Cat 2548<sup>35</sup>  
SIGEL LOT 5/16 Sale 466  
PLSB TY II POS. 2  
2 HUGE MARGINS VF - Superb



#20 - 250 - Cat 75  
Bought Mandel 10/10/72

Sixth Setting



#19 - 225 - Cat 3400 \*



# NUMERALS



1865  
LAID PAPER



Seventh Setting  
#24 - 95<sup>00</sup> Cent 10<sup>00</sup> \*



Eighth Setting  
#23 - 95<sup>00</sup> Cent 10<sup>00</sup> \*

1865  
WOVE PAPER



Ninth Setting  
#22 - 175<sup>00</sup> Cent 22<sup>50</sup> \*



Tenth Setting  
#26 - 100<sup>00</sup> Cent 12<sup>50</sup> \*



Eleventh Setting  
#25 - 120<sup>00</sup> Cent 17<sup>50</sup> \*

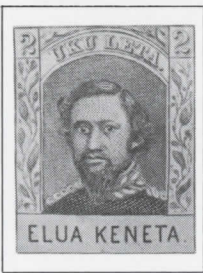
1866



Twelfth Setting  
#21 - 225<sup>00</sup> Cent 27<sup>50</sup> \*







# KING KAMEHAMEHA IV

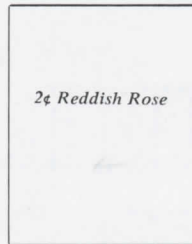


1861-63

HORIZONTALLY LAID PAPER



#27-75<sup>00</sup> Cat 16<sup>00</sup> \*



2¢ Reddish Rose

#27a

VERTICALLY LAID PAPER



#28 CAT 115<sup>00</sup>  
COST-85- SIEGEL  
06, F



#28a 100<sup>00</sup> Cat 13<sup>00</sup> \*



#28a CAT 100<sup>00</sup>  
COST-50- SIEGEL  
MINT-F.  
SMALL THIN

1869

THIN WOVE PAPER



#29-35<sup>00</sup> Cat 16<sup>00</sup> \*

1886-89

YELLOWISH WOVE PAPER



#50-100<sup>00</sup> Cat 20<sup>00</sup>



#51-17<sup>50</sup> Cat 3<sup>00</sup> \*

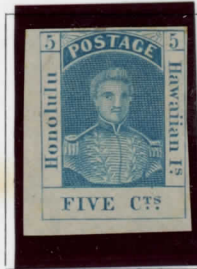


# OFFICIAL GOVERNMENT OVERPRINTS AND REPRINTS



## KAMEHAMEHA III

1889



10R-CAT 35 - COST 42<sup>00</sup>  
SIEGEL PART OG



11R-175 - COST 70<sup>00</sup>  
SIEGEL - VF OG  
ex Matthews (lot 604)

1868



NOTE!  
105-115a-115b  
CAT 325<sup>00</sup>  
COST 26<sup>00</sup>  
SIEGEL

#105 - SMALL THIN  
CAT 10



#115a VF  
CAT 11

REPRINTS OF 1889



#115b - VF  
CAT 25<sup>00</sup>



NOTE!  
10R-5 11R-5  
CAT 55 -  
COST 30 -  
SIEGEL

10R5 - OG - VF  
CAT 25<sup>00</sup>



11R5 - OG - VF CAT 50<sup>00</sup> 1889

1869



#295 - CAT 325<sup>00</sup>  
COST 42<sup>00</sup> SIEGEL  
VF

1886



515 R 505 CAT 40<sup>00</sup>  
COST 10<sup>00</sup>  
VF - OG UNUSED



515 - CAT 48 -  
COST 29<sup>00</sup> OG SIEGEL 2/29/75  
RR - CORNER MARGIN  
BLOCK



#51

# BANK NOTE ISSUES



1864-71



Princess  
Kamamalu

#30 - 4<sup>th</sup> lot 65¢ \*



King  
Kamehameha IV

#31 - 5<sup>th</sup> lot 90¢ \*



King  
Kamehameha V

#32 - 25<sup>th</sup> lot 11<sup>00</sup> \*  
#32 - und 10<sup>00</sup> lot 125¢ \*



King  
Kamehameha V

#33 - 8<sup>th</sup> lot 15¢ \*



Mataio  
Kekuanoa

#34 - 30<sup>th</sup> lot 35¢ \*

1875



King  
Kalakaua

#35 - 32<sup>nd</sup> lot 70¢ \*



Prince  
Leleiohoku

#36 - 25<sup>th</sup> lot 30¢ \*





# BANK NOTE ISSUES



1882



Princess  
Likelike

#37 - 2 <sup>25</sup> Cent 40¢ \*



King David  
Kalakaua

#38 - 40 <sup>00</sup> Cent 3 <sup>00</sup> \*



King  
Kamehameha V

#39 - 7 <sup>00</sup> Cent 1 <sup>50</sup> \*



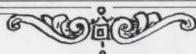
King David  
Kalakaua

#40 - 12 <sup>00</sup> Cent 1 <sup>25</sup> \*



Queen  
Kapiolani

#41 - 23 <sup>00</sup> - Cent 10 <sup>00</sup>  
#41 - 13 <sup>00</sup> - Cent 2 <sup>25</sup> \*



# BANK NOTE ISSUES



1883



Princess  
Likelike

#42 - 1.25 lot 304 \*



King David  
Kalakaua

#45 - 12.00 lot 175 \*



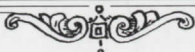
Prince William  
Leleiohoku

#46 - 25.00 lot 275 \*



Kamehameha I

#47 - 35.00 lot 353 \*



# BANK NOTE ISSUES



1883



King William  
Lunalilo

#48 - 72<sup>00</sup> lot 10<sup>00</sup> \*



Queen  
Emma

#49 - 85<sup>00</sup> lot 35<sup>00</sup>



#49-42<sup>00</sup> lot 8<sup>00</sup> \*

1884



King  
Kalakaua

#44 - 8<sup>00</sup> lot 15<sup>00</sup> \*

1886



King  
Kalakaua

#43 - 2<sup>00</sup> lot 65<sup>00</sup> \*

1890



Queen  
Liliuokalani

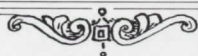
#52 - 2<sup>00</sup> lot 40<sup>00</sup> \*

1891



King  
Kamehameha V

#50 C - 35<sup>00</sup> lot 32<sup>00</sup> \*





# Provisional GOVT. 1893



## ISSUES OF 1864 TO 1891 RED OVERPRINT



Princess  
Kamamalu  
*#53 - 2.00 Cost 50¢ \**



Princess  
Likelike  
*#54 - 2.00 Cost 50¢ \**



Princess  
Likelike  
*#55 - 80¢ Cost 20¢*



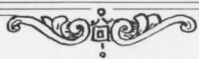
King  
Kalakaua  
*#56 - 2.25 Cost 75¢ \**



Queen  
Liliuokalani  
*(2) #57 - 75¢ - Cost 15¢ \**



Kamehameha V  
*#58 - 3.50 Cost 70¢ \**





PROVISIONAL GOVT.

1893



Kamehameha V

#59 - 2<sup>00</sup> Cost 70¢ \*

#64 CAT 45 - COST 42.50  
SIGEL - VF. NO GUM



Kamehameha V

#60 - 5<sup>00</sup> Cost 75¢ \*



King  
Kalakaua

#61 - 3<sup>50</sup> Cost 85¢ \*



Prince  
Leleiohoku

#62 - 3<sup>50</sup> Cost 75¢ \*



Prince  
Leleiohoku

#63 - 60<sup>00</sup> Cost 7<sup>00</sup> \*



Statue of  
Kamehameha I

#64 - 11<sup>00</sup> Cost 1<sup>50</sup> \*



# PROVISIONAL GOVT.

1893



## ISSUES OF 1864-1891 BLACK OVERPRINT



#65 - 20<sup>00</sup> Cent 6<sup>00</sup> \*



#66 - 80<sup>00</sup> Cent 15<sup>00</sup> \*



#67 - 5<sup>00</sup> Cent 1<sup>00</sup> \*



#68 - 3<sup>00</sup> Cent 1<sup>00</sup> \*



#69 - 125<sup>00</sup> Cent 15<sup>00</sup> \*



#70 - 8<sup>00</sup> Cent 1<sup>25</sup> \*



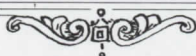
#71 - 10<sup>00</sup> Cent 1<sup>45</sup> \*



#72 - 22<sup>00</sup> Cent 2<sup>75</sup> \*



#73 - 42<sup>50</sup> Cent 7<sup>00</sup> \*





# REPUBLIC OF HAWAII



1894



Coat of Arms

#74-1<sup>00</sup> Cent 15¢ \*  
#74 Used 75¢



View of Honolulu

#75 1<sup>25</sup> Cent 75¢  
#75 Used 50¢ \*



"Flying Goose" Flaw

75a CAT 45¢ VARIATION  
60ST-60<sup>00</sup> SIEBEL  
08-F



Statue of Kamehameha I

#76-2<sup>35</sup> Cent 65¢ \*



Star and Palms

#77-2<sup>25</sup> Cent 80¢ \*



Sanford B. Dole

#79-7<sup>00</sup> Cent 1<sup>25</sup> \*



"S.S. Arawa"

#78-4<sup>25</sup> Cent 75¢ \*



# REPUBLIC OF HAWAII



1899

## CHANGE IN COLORS



Coat of Arms

#80 - 1<sup>st</sup> cont 254 \*



View of Honolulu

#81 - 7<sup>th</sup> cont 55 \*  
#81 - Used 60 \*



"Flying Goose" Flaw

#81 VARIATION CAT 40 \*\*  
COST 60<sup>th</sup> SIEGEL  
OG-F



#647 - 2<sup>nd</sup> \* #648 - 7<sup>th</sup> \*  
Pair cont 259 \*



Statue of  
Kamehameha I

#82 - 2<sup>nd</sup> cont 259  
#82 Used 150 \*







OFFICIAL  
STAMPS



1896



01-900 Cat 348 \*



02-900 Cat 349 \*



03-900 Cat 350 \*



04-900 Cat 302 \*



05-900 Cat 353 \*



06-900 Cat 354 \*





# REVENUES



1887 - 1894  
ROULETTED



R2-CAT 50<sup>00</sup>  
SIEGEL 2"



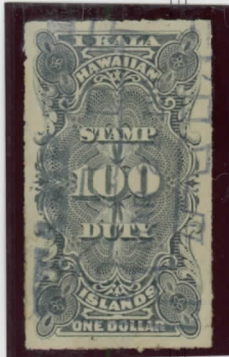
R1-4<sup>00</sup> Cat 1<sup>00</sup>



R2-CAT 50<sup>00</sup>  
COST-165 APPELBAUM



R3-2<sup>50</sup> Cat 3<sup>00</sup>



R3-CAT - 2<sup>75</sup>  
SIEGEL 5Z



10<sup>00</sup> SIEGEL  
Z"



R4-CAT 10<sup>00</sup> SIEGEL  
1 x Z"



R5-20<sup>00</sup> Cat 10<sup>00</sup>



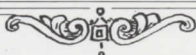
R6-CAT 120 - COST 105<sup>00</sup>  
SIEGEL  
VF



R-7-5<sup>00</sup> Cat 3<sup>75</sup>



R-8-15<sup>00</sup> Cat 12<sup>50</sup>







# REVENUES



1894 - 1913  
PERFORATED



R9-CAT-5000-06-VF  
COST-35- SIEGEL  
LIGHT GREASE



R10-CAT 5000 06-VF  
COST 50.00 SIEGEL

"Not Liable  
To Duty"  
Dark Lilac

R13 ?



R11-400 Cost 3.00



R12 CAT 20 Cost 15.00

THIS STAMP IS  
ROULETTED  
"TERRITORY OF  
HAWAII"



R13 - Cost 5.00  
CAT 5-



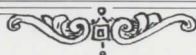
R14-CAT 12.50 Cost 5.00



R15 - Cost 7.50  
CAT 12.50



R16 - 8.50





R1-CAT1600 SIEGEL "Z" F-VF

R3-CAT1100 SIEGEL "Z"-F-VF-"Z"

NOTE! R1-R2-R3-R4-R5

MARKED "Z" - CAT 37.00 COST 28-





# LOCAL PARCEL POST STAMPS OF THE KAHULUI R.R.



1894

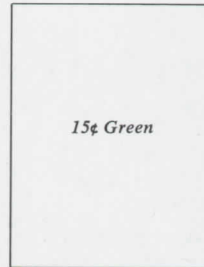
AMERICAN BANK NOTE PRINTING



RR1 - Cost 22.50  
151



RR2 - Cost 5  
152

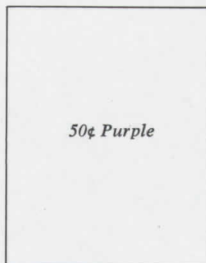


15¢ Green

RR3

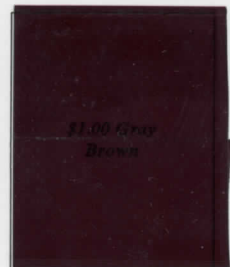


RR4 - Cost 6.50  
154



50¢ Purple

RR5



18¢ Brown

RR6 - Cost 50  
156

