

UNITED STATES POSTAGE

FIRST REGULAR ISSUE

1847

ISSUES FROM HERE TO 1894 ARE ON UNWATERMARKED PAPER



#1 Benjamin Franklin



#2 George Washington



#3



#4

The first general issue of United States postage stamps was authorized by the Act of Congress, March 3, 1847. The Act read, in part, as follows: "... that to facilitate the transportation of letters by mail, the Postmaster-General be authorized to prepare postage stamps, which, when attached to any letter or packet, shall be evidence of prepayment of the postage chargeable on such letter . . ." The Act took effect July 1, 1847 and from that date on the use of any postage stamps not authorized by the Postmaster-General became illegal.

ISSUES OF 1851-57

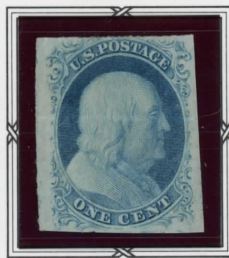
Imperf.



Benjamin Franklin



Benjamin Franklin



Benjamin Franklin



Benjamin Franklin

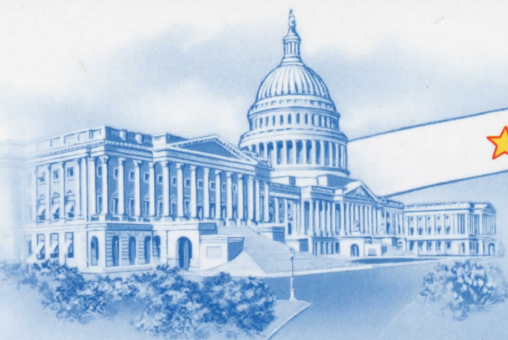


Benjamin Franklin

Population growth and expansion of the postal service called for additional denominations of postage stamps. A contract was awarded to Toppan, Carpenter, Casilear & Co. to produce a new series 1c, 3c, 5c, 10c and 12c stamps. There are six major varieties of 1c stamps . . . variations to be found in the ornamental scrolls and in the panels for "U.S. Postage" and "One Cent." The stamps were all imperforate.



Benjamin Franklin



UNITED

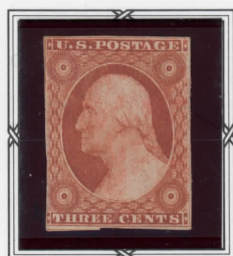
STATES



POSTAGE



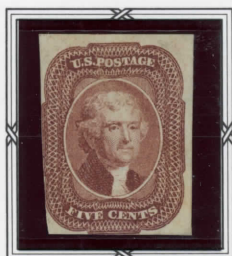
ISSUES OF 1851-57



Washington



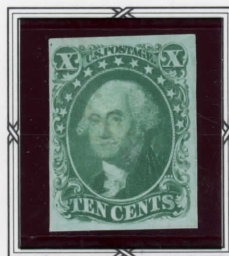
Washington



Thomas Jefferson



Washington



Washington

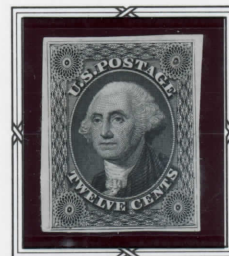


Washington

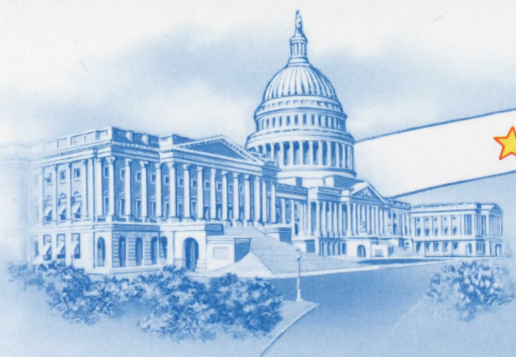


Washington

The 3c stamps feature an outer frame line at top and bottom. There are four varieties of the 10c denomination . . . the first shows the lower ornaments almost complete, the second shows the design complete at the top, but at the bottom the ornaments are broken. The third variety shows all the outer lines at the top broken away, but appears the same as the second one at the bottom. In the fourth variety there appears to be recuts at the top or bottom and in some cases in both places.



Washington



★ UNITED STATES ★
★ POSTAGE ★

SERIES OF 1857-61

Perf. 15



Benjamin Franklin



Franklin

The introduction of stamps in imperforate form was not a very practical method and there was soon need for stamps with perforations to speed up the handling of the revenue end of the business. This series, perforate 15, was introduced in 1857. The engraving was contracted to Toppan, Carpenter & Company. In 1860 additional denominations of 24c, 30c and 90c were added to the series.



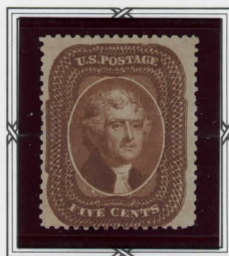
Franklin



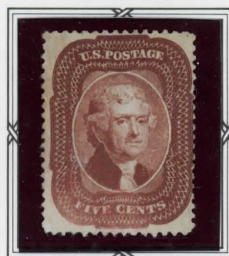
George Washington



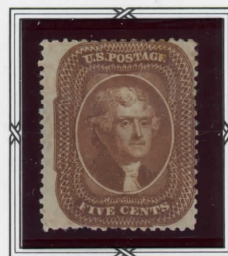
George Washington



Thomas Jefferson



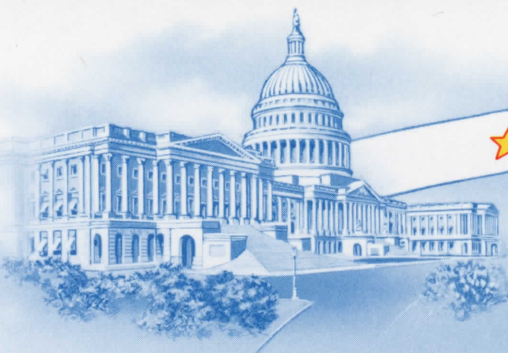
Thomas Jefferson



MADE IN U.S.A.

S-220

Whitely



UNITED

STATES



POSTAGE



SERIES OF 1857-61

Perf. 15



Washington



Washington



Washington

While this series consisted of only eight denominations, there were seven varieties of the 1c, two varieties of the 3c, six varieties of the 5c and five varieties of the 10c. Some are color varieties; others are varieties of the border ornamentations.



Washington



Washington



Washington



Franklin

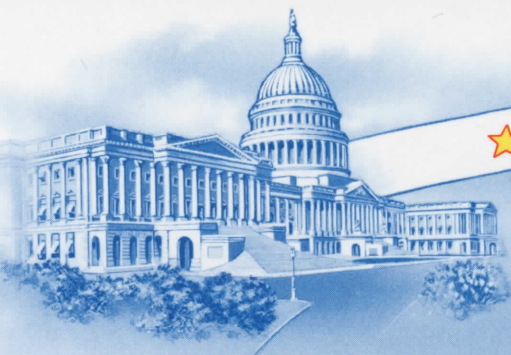


Washington

MADE IN U.S.A.

8-220

Walter



★ UNITED STATES ★
★ POSTAGE ★

ISSUES OF 1861-62

Perf. 12 — SECOND DESIGNS



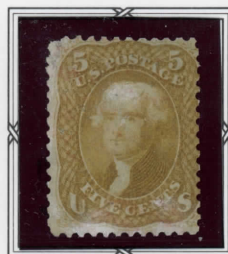
Franklin



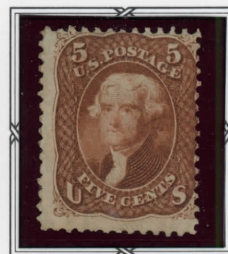
Washington



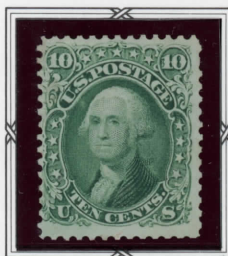
Washington



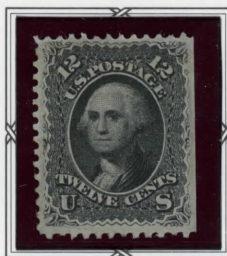
Thomas Jefferson



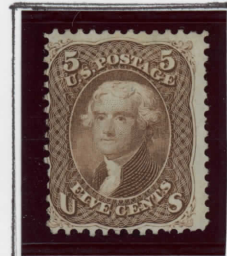
Jefferson



Washington



Washington



Washington

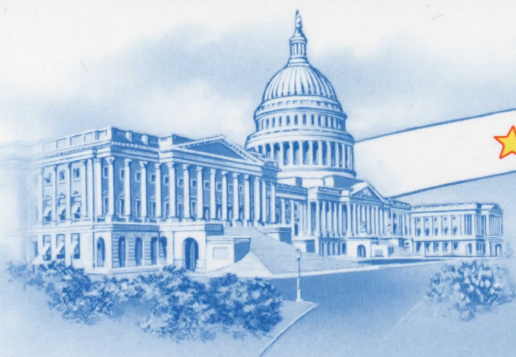


Franklin



Washington

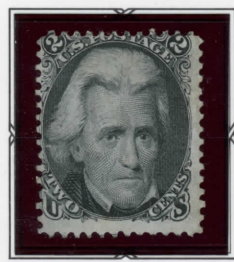
The contract for the manufacture of postage stamps having expired on June 10, 1861, a new one was entered into with the National Bank Note Company of New York, upon terms very advantageous to the Department, which resulted in an annual savings of more than thirty percent in the cost of the stamps. In order to prevent the fraudulent use of the large quantity of stamps remaining unaccounted for, in the hands of postmasters in the disloyal states, it was deemed advisable to change the designs and color of those manufactured under the new contract. Distribution of the new stamps was begun August 15, 1861.



★ UNITED STATES ★
★ POSTAGE ★

ISSUES OF 1861-66

Perf. 12



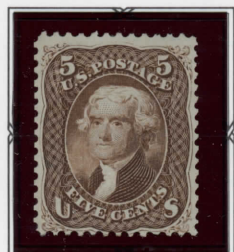
Andrew Jackson



George Washington



Thomas Jefferson



Thomas Jefferson



Abraham Lincoln



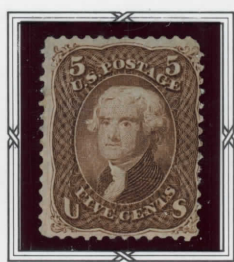
George Washington

ISSUES OF 1867

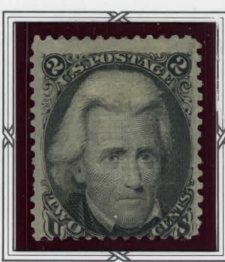
GRILL WITH POINTS UP



Washington



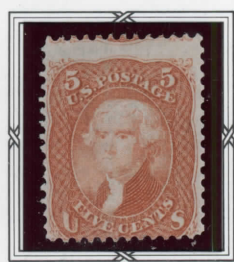
Jefferson



Jackson

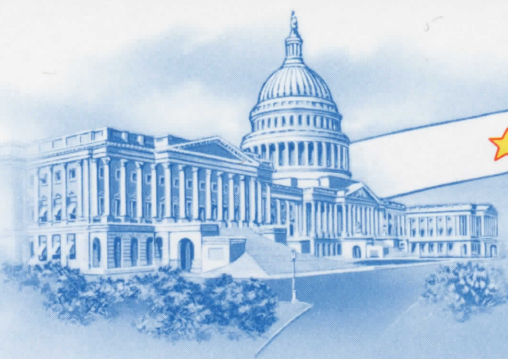


Washington



Jefferson

The issues from 1867 to 1870 bear a grill or embossing. The purpose was to break the tiny fibres of the paper to permit the ink of the cancellation to soak in and make it impossible to wash the cancellations. There are many sizes of grills found on the stamps. Some bear grills covering the entire stamp as is the case with numbers 56 to 58. Number 59 comes with grill about 18 x 15 mm. while number 60 measures about 13 x 16 mm.



UNITED

STATES



POSTAGE

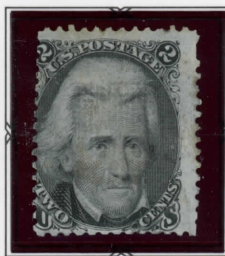


ISSUES OF 1867

Grill about 9 x 13 mm.



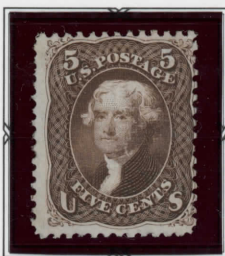
Benjamin Franklin



Andrew Jackson



George Washington



Thomas Jefferson



George Washington



George Washington



Abraham Lincoln



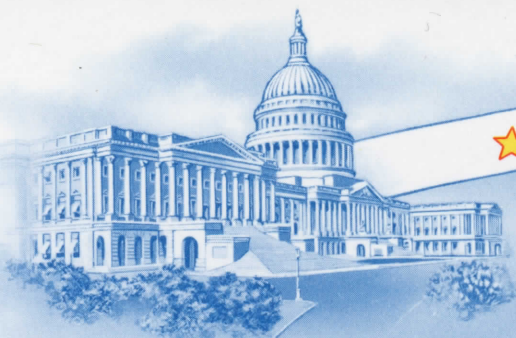
George Washington



Benjamin Franklin



George Washington



UNITED

STATES



POSTAGE



ISSUES OF 1869

Grill measuring $9\frac{1}{2} \times 9\frac{1}{2}$ mm.



Benjamin Franklin



Post Horse and Rider



Locomotive



George Washington



Shield and Eagle



S. S. Adriatic



Landing of Columbus



Landing of Columbus



Declaration of Independence

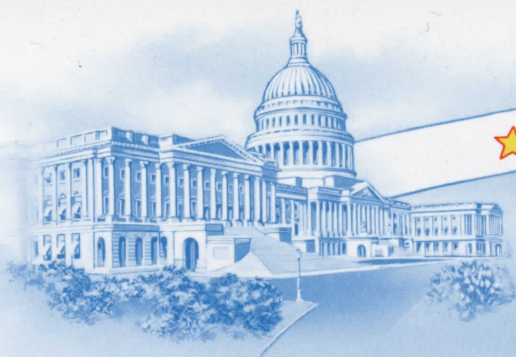


Shield, Eagle and Flags



Abraham Lincoln

Beginning in March, 1869, a new pictorial series of postage stamps was released. While some class it as a commemorative issue because of the subject matter, it was a regular issue replacing the previous one then in use. There were two varieties of the 15c denomination . . . the first one, released April 2, 1869, shows the picture unframed. The second version, released May 23, 1869, shows the picture framed. The series was engraved by the National Bank Note Company.



★ UNITED STATES ★
★ POSTAGE ★

REISSUES OF 1869
GOVERNMENT REPRINTS
ISSUES OF 1869

Produced by the NATIONAL BANK NOTE COMPANY — Perf. 12

1875



Benjamin Franklin



Post Horse and Rider



Locomotive



George Washington
Grill



Shield and Eagle

Special Printings of the 1869 Pictorial Issue were prepared by the National Bank Note Company without grill, perforated 12 and on hard white paper with crackly gum.



S. S. Adriatic



Landing of Columbus



Declaration of Independence



Shield, Eagle and Flags



Abraham Lincoln

ISSUE
OF
1880



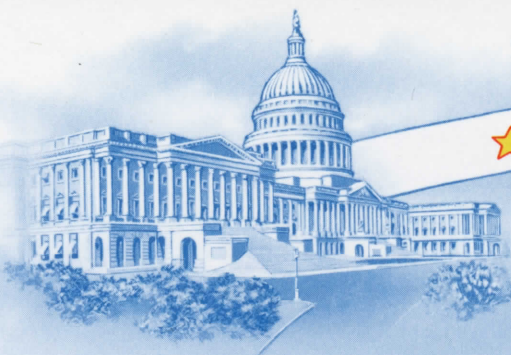
Benjamin Franklin

The 1c buff stamp of the 1869 pictorial series—in the re-issue printings—was also produced by the American Bank Note Company, without grill and on soft porous paper.

MADE IN U.S.A.

S-220

Whitely



UNITED

STATES



POSTAGE



ISSUES OF 1870-71

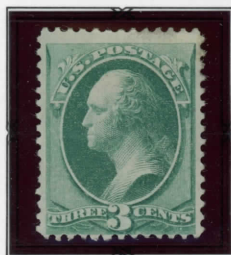
Perf. 12 — With Grill



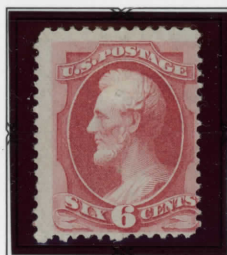
Benjamin Franklin



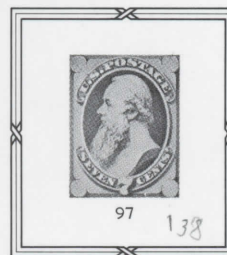
Andrew Jackson



George Washington



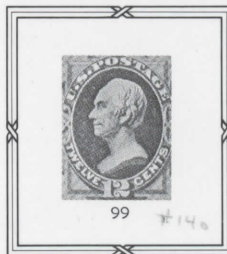
Abraham Lincoln



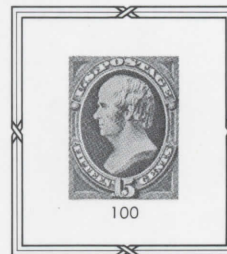
Edwin M. Stanton



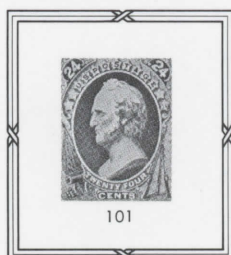
Thomas Jefferson



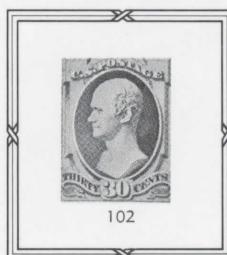
Henry Clay



Daniel Webster



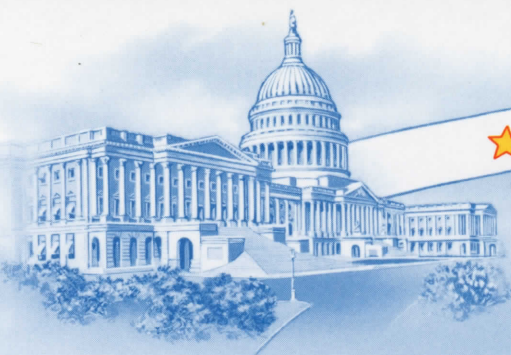
General Winfield Scott



Alexander Hamilton



Commodore O. H. Perry



UNITED

STATES

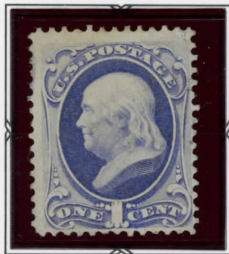


POSTAGE



ISSUES OF 1870-71

Perf. 12 — Without Grill



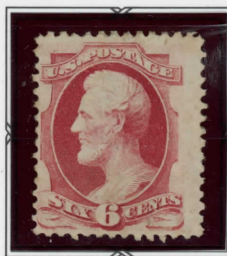
Benjamin Franklin



Andrew Jackson



George Washington



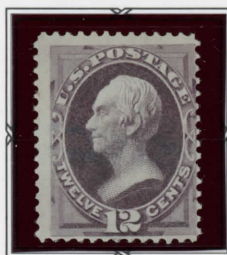
Abraham Lincoln



Edwin M. Stanton



Thomas Jefferson



Henry Clay



Daniel Webster



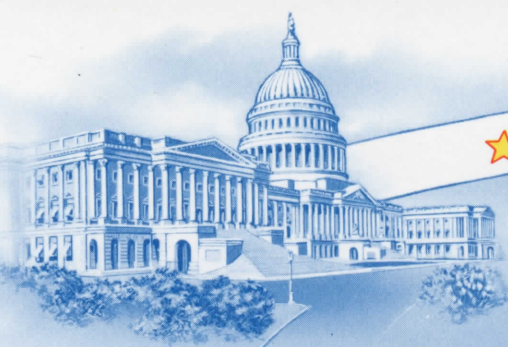
General Winfield Scott



Alexander Hamilton



Commodore O. H. Perry



UNITED

STATES

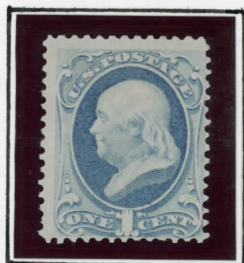


POSTAGE



SERIES OF 1873

Printed by the Continental Bank Note Company
Perf. 12 with Secret Marks



Benjamin Franklin



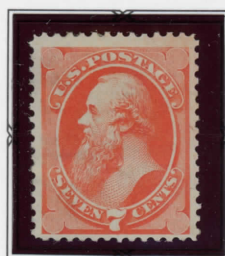
Andrew Jackson



George Washington



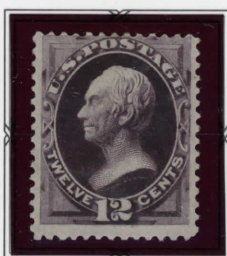
Abraham Lincoln



Edwin M. Stanton



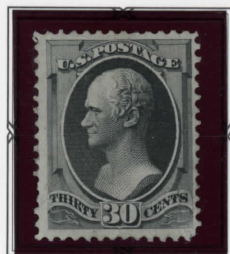
Thomas Jefferson



Henry Clay



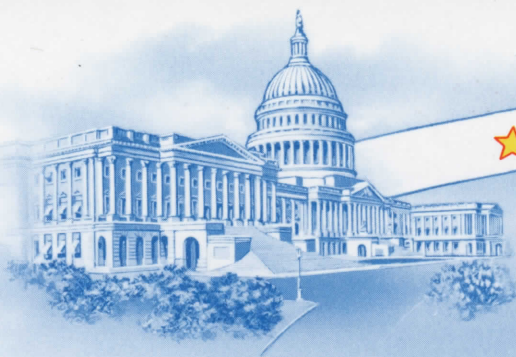
Daniel Webster



Alexander Hamilton



Commodore O. H. Perry



★ UNITED STATES ★
★ POSTAGE ★

ISSUES OF 1875



Andrew Jackson



Zachary Taylor

ISSUES OF 1879

Same as 1870-75 Issues — Soft Porous Paper



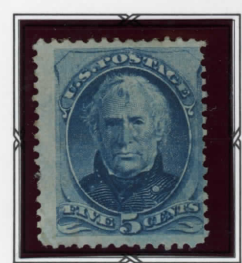
Benjamin Franklin



Andrew Jackson



George Washington



Zachary Taylor



Abraham Lincoln



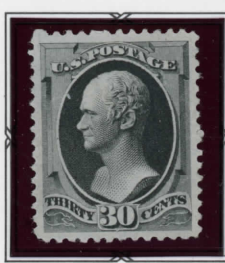
Thomas Jefferson



Thomas Jefferson



Daniel Webster



Alexander Hamilton



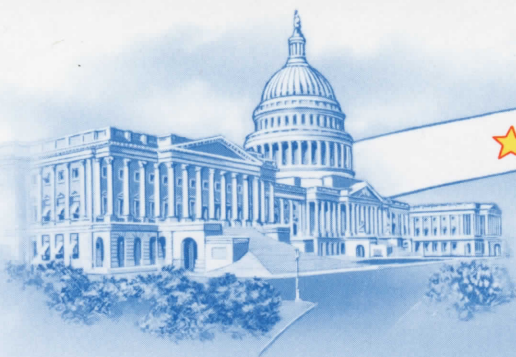
Commodore O. H. Perry

MADE IN U.S.A.

S-220

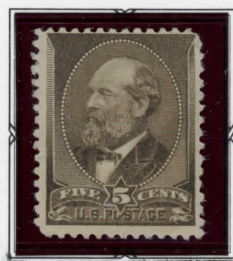
Webster

The business of Continental Bank Note Company was taken over by the American Bank Note Company on February 4, 1879 and along with it came stamp printing contracts held by Continental. American Bank Note printings were generally on soft paper.



★ UNITED STATES ★
★ POSTAGE ★

ISSUE OF 1882



James A. Garfield

SERIES OF 1873 RE-ENGRAVED

Printed by the American Bank Note Company — Perf. 12

1881-82



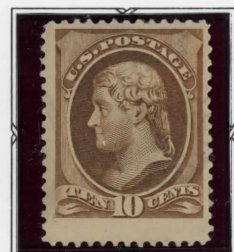
Benjamin Franklin



George Washington



Abraham Lincoln



Thomas Jefferson

1883



George Washington

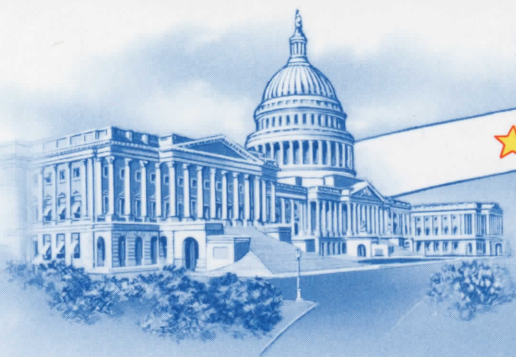


Andrew Jackson

MADE IN U.S.A.

S-220

Walter



★ UNITED STATES ★
★ POSTAGE ★

MADE IN U.S.A.

1883

Soft Porous Paper



George Washington



Andrew Jackson

ISSUES OF 1887

Printed by the American Bank Note Company

Perf. 12



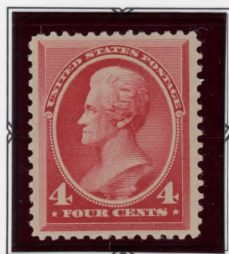
Benjamin Franklin



George Washington



George Washington



Andrew Jackson



James A. Garfield

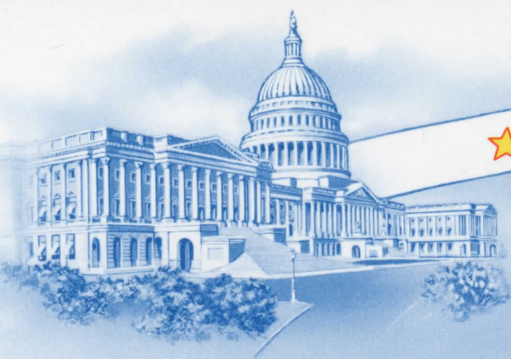


Alexander Hamilton



Commodore O. H. Perry

While this group was issued over a period of six years, we have placed them together on the one page as one series.



UNITED

STATES



POSTAGE



MADE IN U.S.A.

SERIES OF 1890-93

Printed by the American Bank Note Company



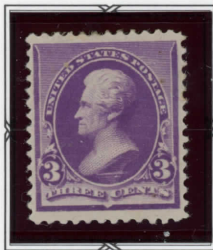
Benjamin Franklin



George Washington



George Washington



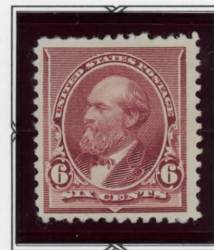
Andrew Jackson



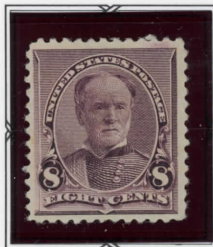
Abraham Lincoln



Ulysses S. Grant



James A. Garfield



William T. Sherman



Daniel Webster



Henry Clay

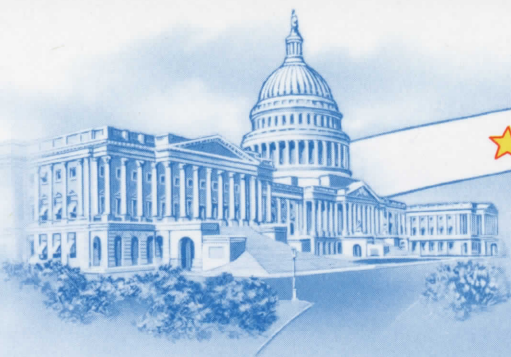


Thomas Jefferson



Commodore O. H. Perry

The series of 1890 was the first to be prepared in the smaller size which was to become the standard size for many years to come. Note that the 1890 series is without triangles in the upper corners. The next change in designs came when the Bureau of Engraving and Printing began printing the stamps.



UNITED

STATES



POSTAGE



SERIES OF 1894

Bureau of Engraving and Printing Issues



Benjamin Franklin



Benjamin Franklin



George Washington



George Washington



Washington



Washington



Washington



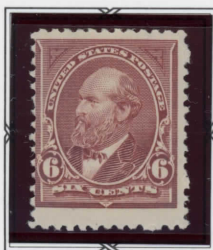
Andrew Jackson



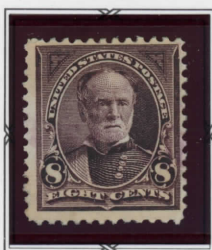
Abraham Lincoln



Ulysses S. Grant



James A. Garfield



William T. Sherman



Daniel Webster



Henry Clay



Thomas Jefferson



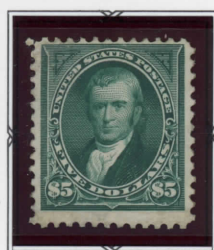
Commodore O. H. Perry



Commodore O. H. Perry

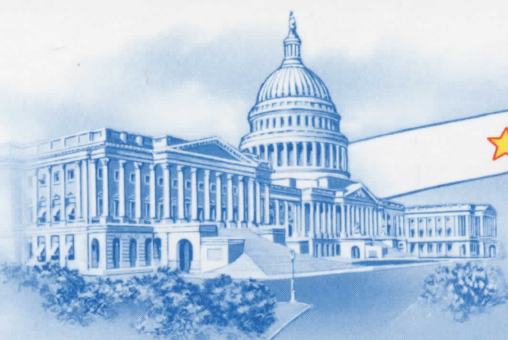


James Madison



John Marshall

The issue of 1894 was the first series of postage stamps to be printed at the Bureau of Printing and Engraving. The general designs of the 1890 series were retained, but triangles were added to the corners of the stamps to make it easy to distinguish the work of the Bureau.



UNITED

STATES



POSTAGE



SERIES OF 1895

Watermarked in DOUBLE-LINED Capitals — USPS



Franklin



Washington



Washington



Washington



Andrew Jackson



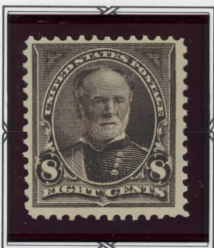
Abraham Lincoln



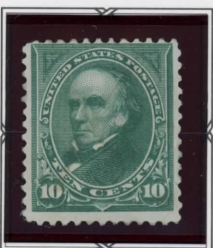
Ulysses S. Grant



James A. Garfield



William T. Sherman



Daniel Webster



Henry Clay



Thomas Jefferson



Perry



Perry

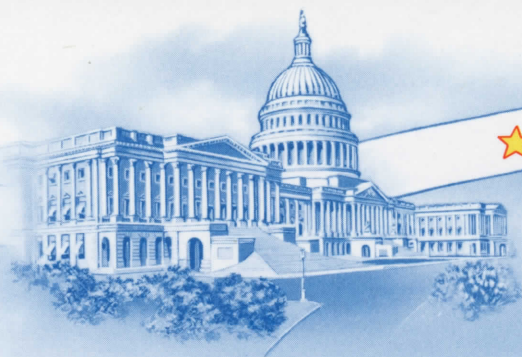


James Madison



John Marshall

In 1895 the Bureau of Printing and Engraving decided to print our stamps on watermarked paper. The watermark consists of Roman style double outlined capital letters — U S P S. This stands for UNITED STATES POSTAL SERVICE and the letters appear 90 times on a sheet of 100 stamps. The change to watermarked paper was brought about to further protect our stamps from forgery.



UNITED

STATES



POSTAGE



MADE IN U.S.A.

ISSUES OF 1898

Watermarked in DOUBLE-LINED Capitals — USPS



Franklin



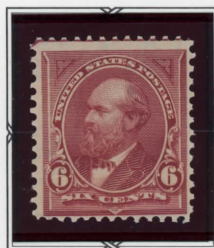
George Washington



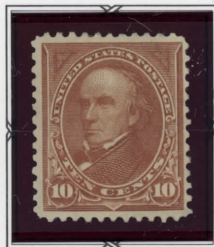
Abraham Lincoln



Ulysses S. Grant



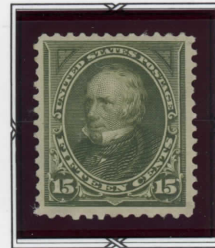
James A. Garfield



Daniel Webster



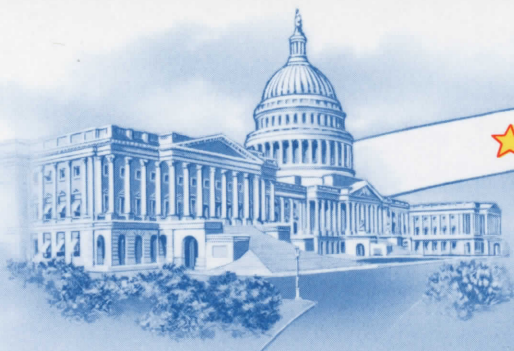
Daniel Webster



Henry Clay

S-230

Whitely



★ UNITED STATES ★
★ POSTAGE ★

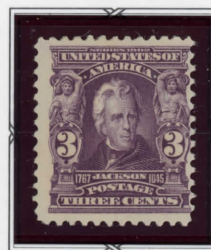
SERIES OF 1902-03



Benjamin Franklin



George Washington



Andrew Jackson



Ulysses S. Grant



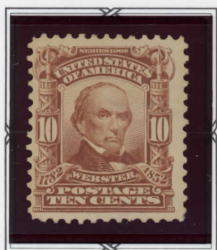
Abraham Lincoln



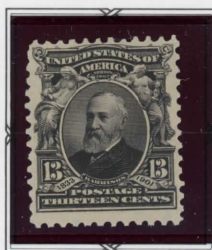
James A. Garfield



Martha Washington



Daniel Webster



Benjamin Harrison



Henry Clay



Thomas Jefferson



David G. Farragut



James Madison

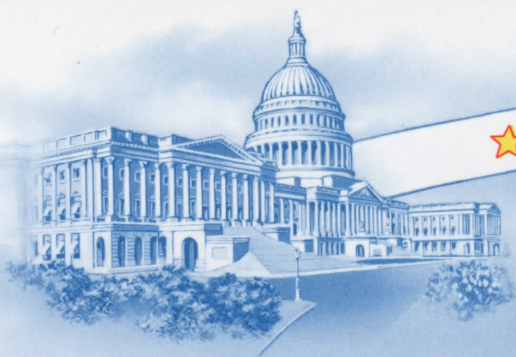


John Marshall



George Washington

This series of postage stamps, known as the 1902 series, was issued to replace the series of 1894. After the new 2c stamp was issued it was decided that a more artistic design could be made, and the Bureau of Engraving and Printing was requested to prepare one. This improved design was first issued to post offices on November 12, 1903. To add historic and educational interest to the series, the name of the person whose portrait is presented appears on each stamp, and the years of birth and death.



★ UNITED STATES ★
★ POSTAGE ★

SERIES OF 1902

Imperf.

1906



Benjamin Franklin

1906



George Washington

1908



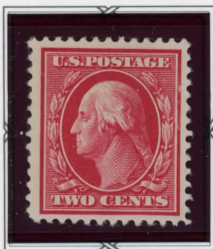
Abraham Lincoln

SERIES OF 1908-09

Perf. 12 – Watermarked in DOUBLE-LINED Capitals – USPS



Benjamin Franklin



George Washington



George Washington



George Washington



George Washington



George Washington



George Washington

For the sake of uniformity and artistic effect, the head of Washington (a profile from Houdon's bust) was adopted as the subject of all the denominations except the one cent, which bears the head of Franklin (the first Postmaster General).



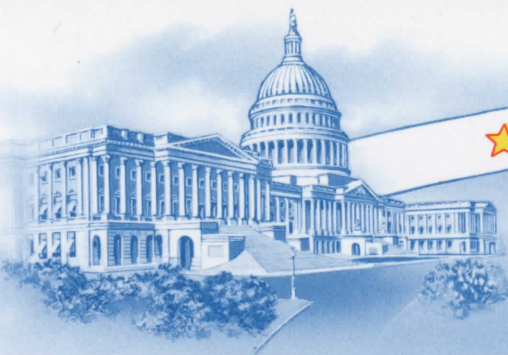
George Washington



MADE IN U.S.A.

8-220

339



★ UNITED STATES ★
★ POSTAGE ★



Benjamin Franklin

SERIES OF
1908-09

DOUBLE LINE
Watermark



George Washington



345



George Washington



Franklin



Washington

1908-10
COIL
STAMPS

Perf. 12



Washington



Washington

SPECIAL DELIVERY

1902

1908

1911

DOUBLE LINE
Watermark



Messenger Boy on Bicycle

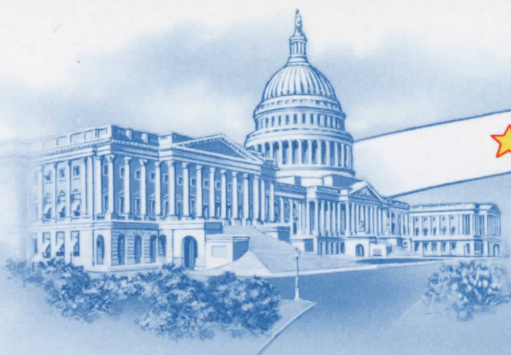


Winged Hat of Mercury



Messenger Boy on Bicycle

SINGLE LINE
Watermark



★ UNITED STATES ★
★ POSTAGE ★

SERIES OF 1909

Perf. 12 Vertical



Benjamin Franklin



George Washington



George Washington



356 10c

Bluish Paper



Benjamin Franklin



George Washington



George Washington



George Washington



George Washington

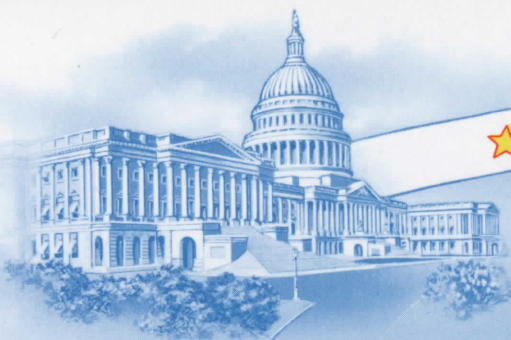


George Washington



D/L

Bluish Paper, used in production of this group of ten stamps, was made of thirty-five percent rag stock instead of all wood pulp. The bluish paper can be detected on the face of the stamps as well as on the backs. The issue was a very limited one.



UNITED

STATES



POSTAGE



SERIES OF 1910-11

Watermarked in SINGLE LINE Capitals — USPS

Perf. 12



Benjamin Franklin



George Washington



George Washington



George Washington

During the year 1910, about November 1st, the Bureau of Engraving and Printing began using paper watermarked with single-lined letters — USPS.



George Washington



IMPERFORATE



Benjamin Franklin



George Washington

Perf. 12 Vertically



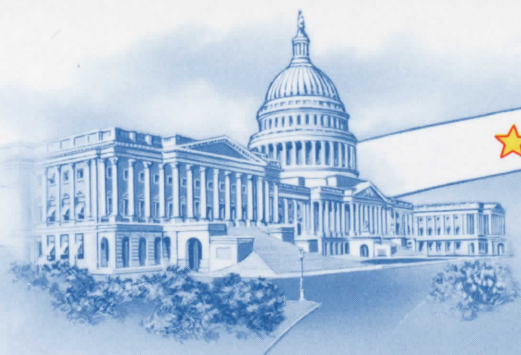
Benjamin Franklin



George Washington



George Washington



UNITED

STATES



POSTAGE



Perf. 12 Horizontally

SERIES OF 1910

Perf. 8½ Horizontally



Benjamin Franklin



George Washington

Watermarked
SINGLE LINE



Benjamin Franklin



George Washington

385

391

SERIES OF 1910-13

Perf. 8½ Vertically



Benjamin Franklin



George Washington

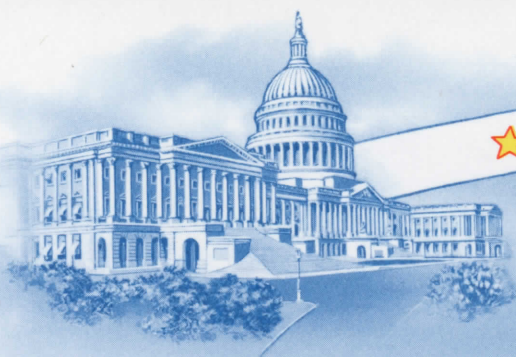


394



George Washington





UNITED

STATES

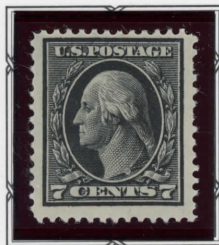


POSTAGE



ISSUES OF 1912-14

Watermarked in SINGLE LINE - Perf. 12



George Washington

The discontinuance of distinctive parcel post stamps made it necessary to issue five new denominations of ordinary stamps to take their place. In this group, the seven cent stamp bears the head of Washington in profile, from Houdon's bust, looking to the left.

IMPERFORATE



George Washington



George Washington

Perf. 8½



George Washington



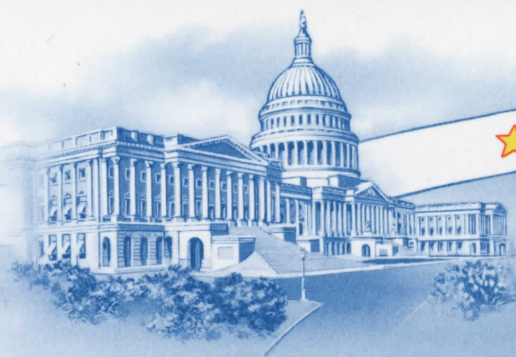
George Washington



George Washington



George Washington



★ UNITED STATES ★
★ POSTAGE ★

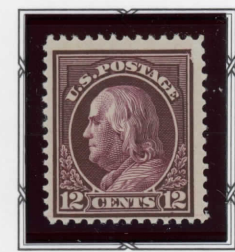
ISSUES OF 1912-14

Watermarked in SINGLE LINE - Perf. 12



Benjamin Franklin

This new group of stamps, released in January and February 1912, featured more distinguishing colors for the benefit of postal workers sorting the mails. There was too much similarity in the various denominations of the previous series.



Benjamin Franklin



Benjamin Franklin

Benjamin Franklin

Watermarked in DOUBLE-LINE Capitals — USPS
1912



Benjamin Franklin

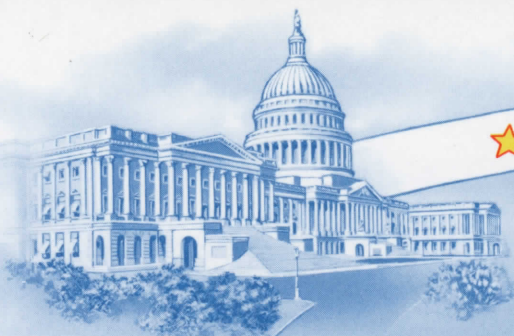


Benjamin Franklin

MADE IN U.S.A.

9-220

Whitely



★ UNITED STATES ★
★ POSTAGE ★

ISSUES OF 1914-15

Watermarked in SINGLE LINE Capitals — USPS — Perf. 10



George Washington

George Washington



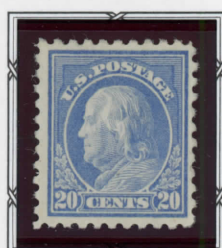
George Washington

George Washington

George Washington

Benjamin Franklin

Benjamin Franklin



Benjamin Franklin



Benjamin Franklin

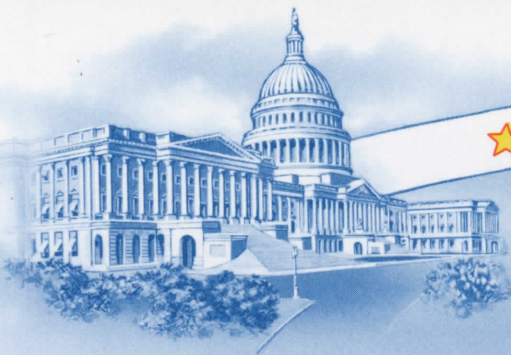
REGISTRATION
1911



American Eagle



Benjamin Franklin



★ UNITED STATES ★
★ POSTAGE ★

ISSUES OF 1914
SINGLE-LINE WATERMARK USPS — PERF. 10



George Washington



George Washington



USE R409



USE R445
403



USE R416
346

George Washington

446



SPECIAL DELIVERY STAMPS

1916

1914



SINGLE-LINE WATERMARK — PERF. 10



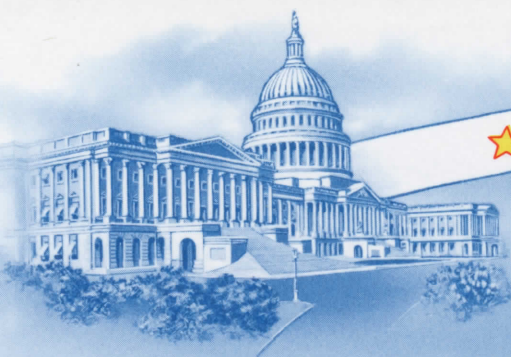
Messenger on Bicycle

UNWATERMARKED — PERF. 10

1917



UNWATERMARKED — PERF. 11



UNITED

STATES



POSTAGE



COIL STAMPS

1914-16

Rotary Press Printing — Perf. 10



452



George Washington 454

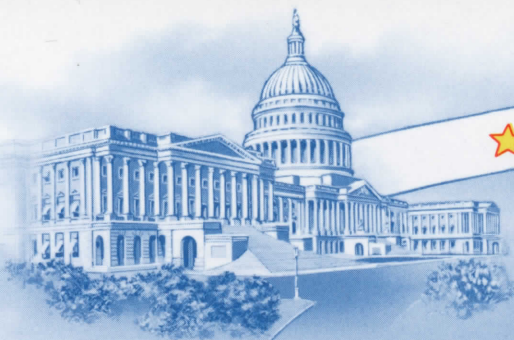


Between the years 1910 and 1920, there were many plate varieties issued on the 2c and 3c stamps with the head of George Washington. For a description of these varieties consult a good specialized catalog of United States stamps. Spaces for the more important variations are provided in this album.



457





UNITED

STATES



POSTAGE



MADE IN U.S.A.

DOUBLE-LINE WATERMARK

PERF. 10
1915



Benjamin Franklin

SINGLE-LINE WATERMARK

IMPERFORATE

1914



George Washington

SINGLE-LINE WATERMARK

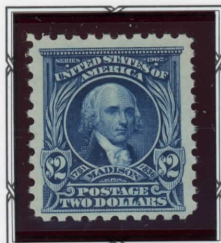
PERF. 11
1915



George Washington

UNWATERMARKED PAPER — Perf. 10

1917



James Madison



John Marshall

1916-17

UNWATERMARKED — IMPERFORATE



Washington



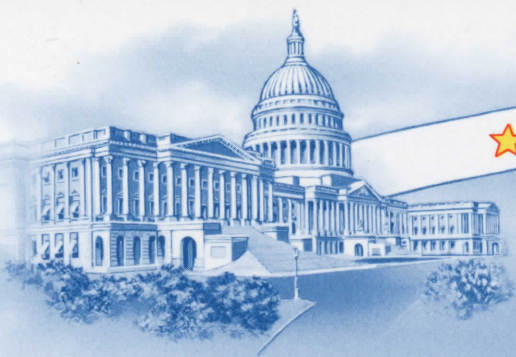
Washington



Washington



8364



★ UNITED STATES ★
★ POSTAGE ★

SERIES OF 1916-17

FLAT PLATE PRINTINGS — PERF. 10
Unwatermarked



George Washington



George Washington

George Washington



Benjamin Franklin

Benjamin Franklin

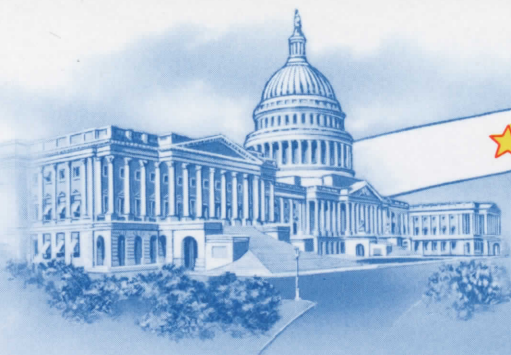


Benjamin Franklin

MADE IN U.S.A.

8-220

W. H. & A. S.



UNITED

STATES



POSTAGE



SERIES OF 1917-19

Rotary Press Coil Stamps — Perf. 10



Washington

Washington



Washington

Washington



Washington

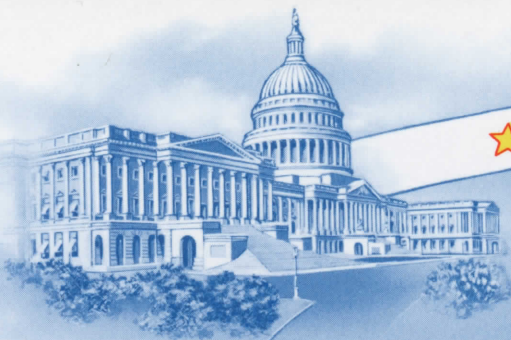
493



Washington



497



UNITED

STATES



POSTAGE



SERIES OF 1917-19

FLAT PLATE PRINTINGS — PERF. 11

Unwatermarked



George Washington



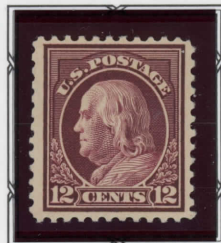
George Washington

George Washington

George Washington

George Washington

Benjamin Franklin



Benjamin Franklin

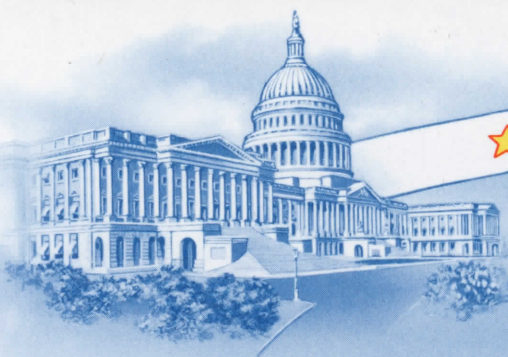


Benjamin Franklin

MADE IN U.S.A.

6-220

W.H. & S.



UNITED

STATES



POSTAGE



DOUBLE-LINE WATERMARK — PERF. 11

1917



George Washington

UNWATERMARKED — PERF. 11

1918



Benjamin Franklin



Benjamin Franklin

OFFSET PRINTINGS OF 1918-20

Unwatermarked — Perf. 11



Washington



Washington



Washington



Washington



1919
Perf. 12½

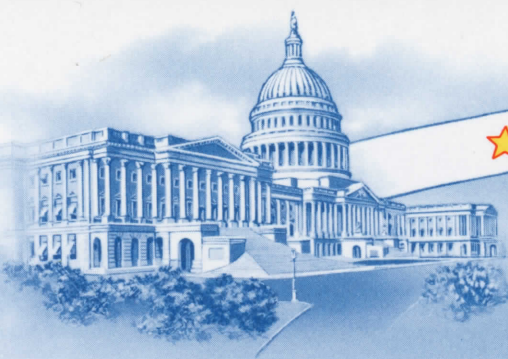


Washington

MADE IN U.S.A.

5-220

Whitely



★ UNITED STATES ★
★ POSTAGE ★

OFFSET PRINTINGS OF 1918-20

IMPERFORATE



531



George Washington



532



534



George Washington



X



George Washington

535

ISSUES OF 1919

Unwatermarked — Rotary Press Printing — Perf. 11 x 10

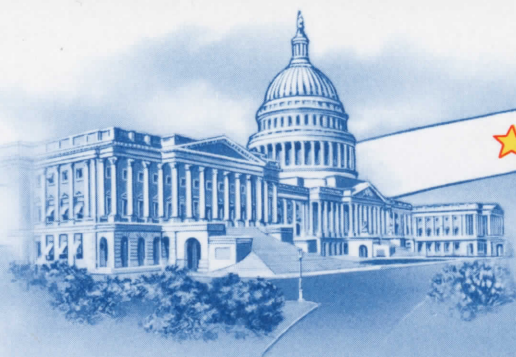


George Washington



George Washington





★ UNITED STATES ★
★ POSTAGE ★

Perf. 10 x 11
Unwatermarked — Rotary Press
1920



Washington

Perf. 10
Unwatermarked — Rotary Press
1921



Washington

Rotary Press Printing — Perf. 11
1921



Washington



1920



Flat Plate Printing
Perf. 11

Franklin

SPECIAL DELIVERY STAMPS

1922



Motorcycle Delivery

1925



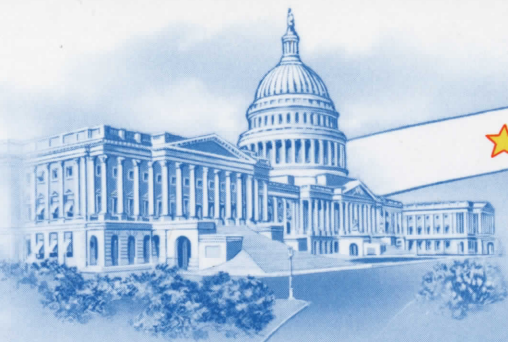
Motorcycle Delivery

1925



Post Office Truck

Flat Plate Printings — Perf. 11



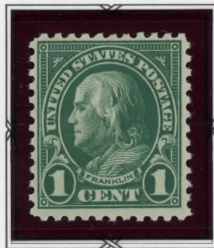
★ UNITED STATES ★
★ POSTAGE ★

REGULAR ISSUE OF 1922-25

Flat Plate Printing — Perf. 11



Nathan Hale



Benjamin Franklin



Warren G. Harding



George Washington



Abraham Lincoln



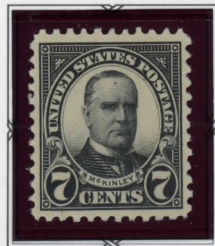
Martha Washington



Theodore Roosevelt



James A. Garfield



William McKinley



Ulysses S. Grant



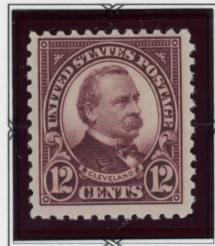
Thomas Jefferson



James Monroe



Rutherford B. Hayes



Grover Cleveland



American Indian



Golden Gate



Niagara Falls



Statue of Liberty



American Buffalo



Arlington Amphitheater



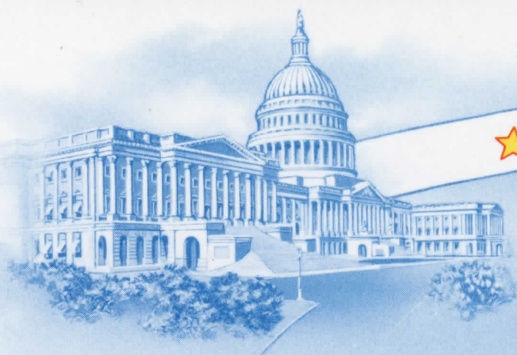
Lincoln Memorial



U. S. Capitol



"America"



UNITED

STATES



POSTAGE



COIL STAMPS

1923-29



Benjamin Franklin



Warren G. Harding



George Washington



George Washington



Abraham Lincoln



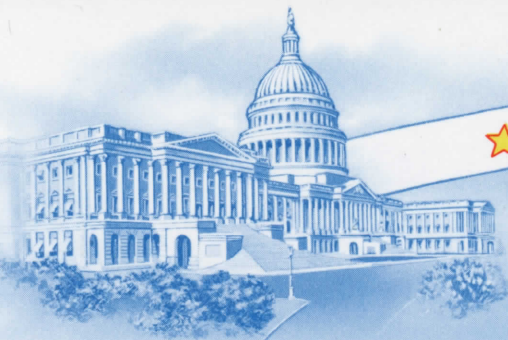
Martha Washington



Theodore Roosevelt



James Monroe



UNITED

STATES



POSTAGE



KANSAS OVERPRINTS

1929



Benjamin Franklin



Warren G. Harding

REGULAR ISSUES OF 1926-27
OVERPRINTED "KANS."



George Washington



Abraham Lincoln



Martha Washington



Theodore Roosevelt



James A. Garfield



William McKinley



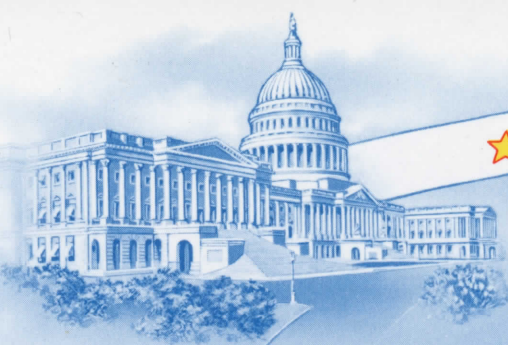
Ulysses S. Grant



Thomas Jefferson



James Monroe



UNITED

STATES



POSTAGE



NEBRASKA OVERPRINTS

1929



Benjamin Franklin



Warren G. Harding

REGULAR ISSUES OF 1926-27
OVERPRINTED "NEBR."



George Washington



Abraham Lincoln



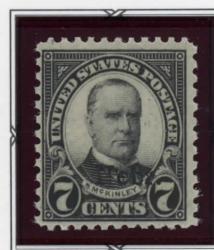
Martha Washington



Theodore Roosevelt



James A. Garfield



William McKinley



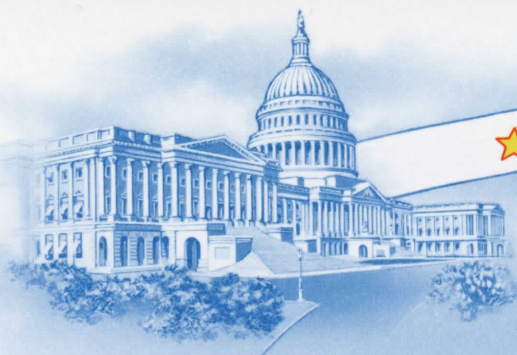
Ulysses S. Grant



Thomas Jefferson



James Monroe



UNITED

STATES



POSTAGE



SPECIAL DELIVERY

1885

Special Delivery service was begun by an Act of Congress on March 5, 1885, and put into operation on October 1, 1885. The Act limited the service to free delivery offices and others with a population of 4,000 or more. The stamp for this service is, therefore, inscribed, "SECURES IMMEDIATE DELIVERY AT A SPECIAL DELIVERY OFFICE."



Messenger Running

1888



Messenger Running

The Act of August 4, 1886 made the stamps and service available at all post offices and upon any article of mailable matter. This stamp, released September 6, 1888, bears a changed inscription that reads, "SECURES IMMEDIATE DELIVERY AT ANY POST OFFICE."

1893



Messenger Running

From January 24, 1893, until January 5, 1894, the special delivery stamp was printed in orange and the printing in that color continued until May 19, 1894, when the stock on hand was exhausted. This stamp is known as the Columbian Exposition Issue.

1894



Messenger Running

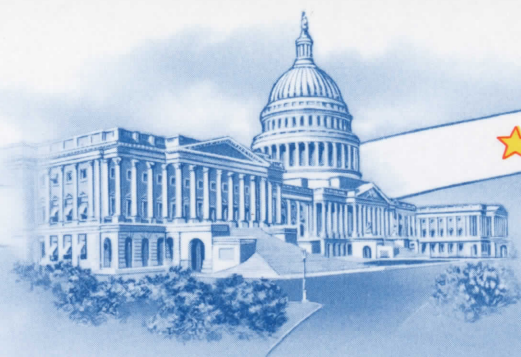
On October 10, 1894 the special delivery stamp was again printed in blue, but by the Bureau of Engraving and Printing. The design was the same as one issued September 6, 1888, but a line appears under "TEN" and "CENTS".

1895



Messenger Running

In 1895, the Bureau switched to the use of double-line watermarked paper. This is the only difference between this stamp and the one issued in 1894.



UNITED

STATES



POSTAGE



PARCEL POST ISSUES

1912-13



Clerk



City Carrier



Railway Postal Clerk



Rural Carrier



Mail Train



Steamship and Mail Tender



Automobile Service



Aeroplane Carrying Mail



Manufacturing



Dairying

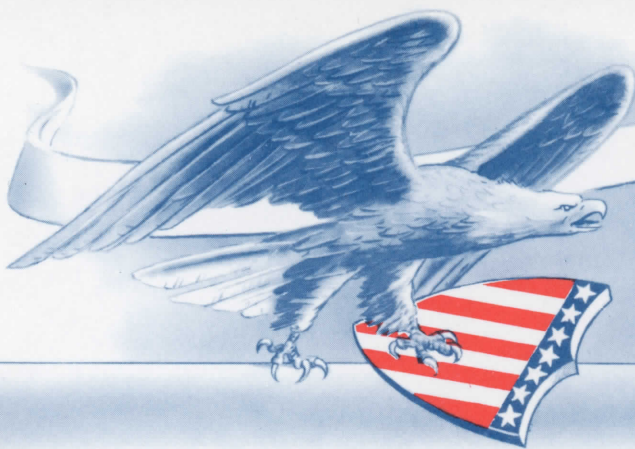


Harvesting



Fruit Growing

Under the provisions of the act of Congress approved August 24, 1912, the Department prepared a set of twelve parcel post stamps and five parcel post-postage due stamps of distinctive designs. The designs were prepared in 3 groups of 4 stamps each, the working personnel of the Postal Service being represented by the first group, the transportation of the mail by the second group, and the manufacturing and agricultural interests of the country by the third group. The stamps were first placed on sale January 1, 1913 with the inauguration of the parcel post law.



★ UNITED
STATES
COMMEMORATIVES

COLUMBIAN ISSUES

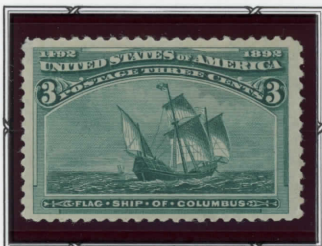
1893



Columbus in sight of land



Landing of Columbus



Flagship of Columbus



Fleet of Columbus



Columbus soliciting aid from Isabella



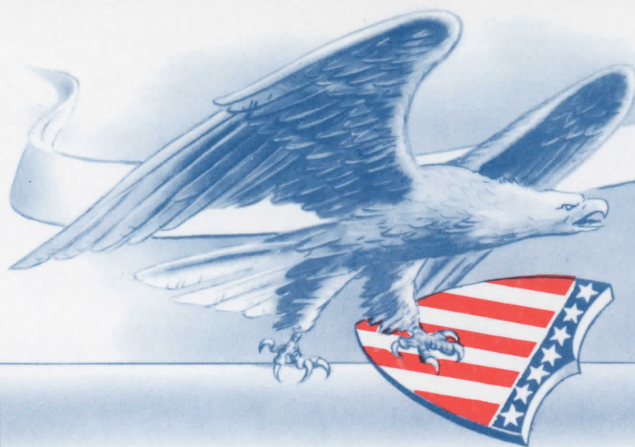
Columbus welcomed at Barcelona



Columbus restored to favor



Columbus presenting natives



COLUMBIAN SERIES

1893



Columbus announcing his discovery



Columbus at La Rabida



Recall of Columbus



Isabella pledging her jewels



Columbus in chains



Columbus describing third voyage

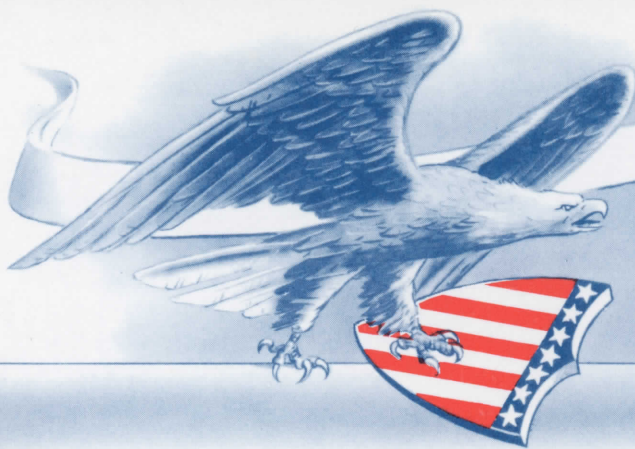


Isabella - Columbus



Columbus

The Columbian Series was issued in 1893 to commemorate the 400th anniversary of the discovery of America by Christopher Columbus. The set consists of sixteen stamps, each bearing a design depicting various important scenes in this epochal event. This issue was placed on sale in January, 1893, except the 8c value, which appeared in March of 1893. Scenes making up this group were taken from prominent works of art in existence throughout the world.



TRANS-MISSISSIPPI EXPOSITION SERIES

1898



Marquette on the Mississippi



Farming in the West



Indian Hunting Buffalo



Fremont on Rocky Mountains



Troops Guarding Train



Hardships of Emigration



Western Mining Prospector

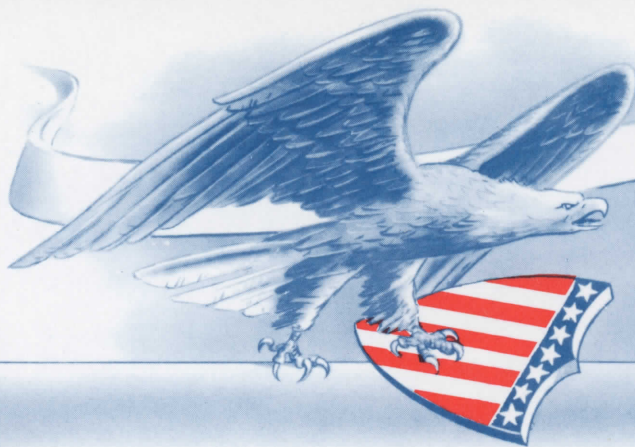


Western Cattle in Storm



Mississippi River Bridge

This set of nine stamps was issued to commemorate the opening of the Trans-Mississippi and International Exposition at Omaha, Nebraska. The various scenes portrayed on the stamps were taken from art reproductions depicting the progress of the "Golden West." The Series was placed on sale June 10, 1898, and discontinued on December 31st of the same year.



PAN AMERICAN EXPOSITION SERIES

1901



Fast Lake Navigation



Fast Express



Automobile



Bridge at Niagara Falls



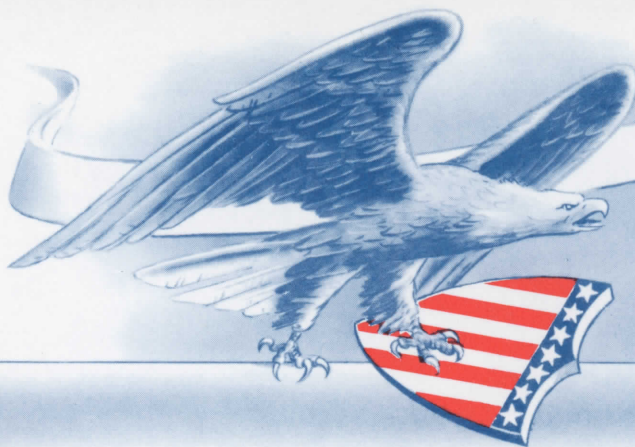
Canal Locks at Sault Ste. Marie



Fast Ocean Navigation

Coinciding with the opening and closing of the Pan American Exposition at Buffalo, N. Y., this set was placed on sale May 1, 1901, at Post Offices throughout the country and withdrawn from sale October 31, 1901. The stamps were issued to commemorate and publicize the exposition which had for its theme, "To illustrate the progress of the New World during the 19th Century."

Pictures on the stamps are reproductions from current means of transportation.



LOUISIANA PURCHASE EXPOSITION SERIES

1904



Robert R. Livingston



Thomas Jefferson



James Monroe



William McKinley



Map of Louisiana Purchase

Issued to commemorate and publicize the World's Fair, St. Louis, 1904 the purpose of which was to celebrate the 100th anniversary of the purchase of the Louisiana Territory from France. The stamps, in a set of five, were placed on sale May 1, 1904, to December 1, 1904, and honored those connected with its purchase, as well as a map of the territory.

JAMESTOWN EXPOSITION SERIES

1907



Captain John Smith

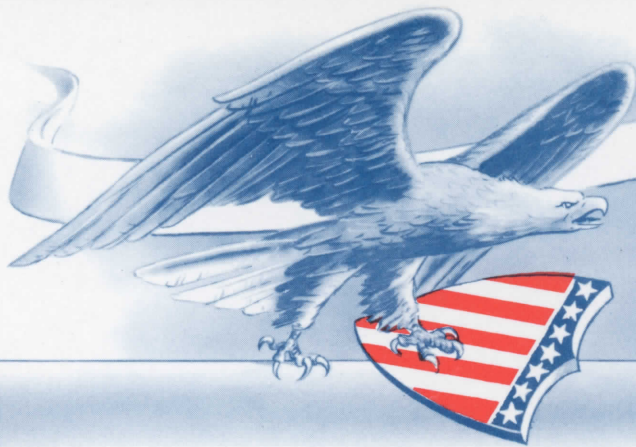


Founding of Jamestown



Pocahontas

The Jamestown Exposition stamps were issued to commemorate the tercentennial of the Founding of Jamestown and consisted of three stamps. The Exposition was held at Hampton Roads, Va., in 1907, and the stamps were placed on sale April 25th of the same year. Portraits of the principals involved in the career of the Jamestown plantation appear on the stamp.



LINCOLN MEMORIAL ISSUE

1909



Lincoln

Authorized by a joint resolution of Congress, the Postmaster General issued a 2¢ stamp commemorating the 100th anniversary of the birth of Abraham Lincoln. Date of first sale was February 12, 1909. A bust from St. Gauden's statue of Lincoln appears on the stamp.

ALASKA-YUKON-PACIFIC EXPOSITION ISSUE



William H. Seward

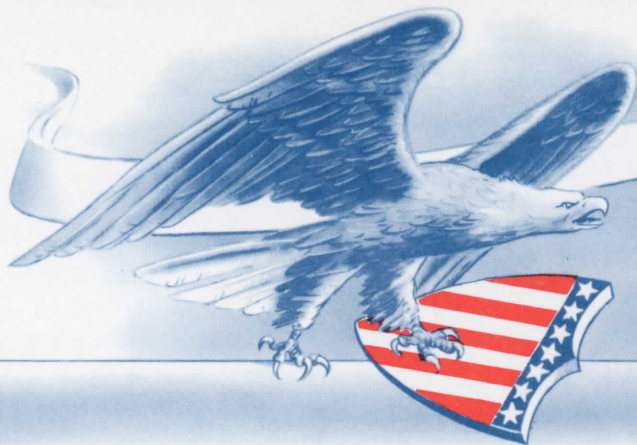
To commemorate the development of the Alaska-Yukon-Pacific Territory, a 2¢ stamp was placed on sale at Seattle, Washington, June 1, 1909. A portrait of William H. Seward, Secretary of State, who negotiated the purchase of Alaska from Russia in 1867, appears on this stamp.

HUDSON FULTON CELEBRATION ISSUE



The Clermont and Half Moon

Celebrating the tercentenary of the discovery of the Hudson River and the centennial of its first navigation by steam, this stamp was first placed on sale September 25, 1909. The central design shows the progress from canoe to steam on the Hudson River.



UNITED STATES COMMEMORATIVES

PANAMA-PACIFIC EXPOSITION SERIES

1912-13



PERFORATED
12



Balboa

Panama Canal



Golden Gate



Discovery of San Francisco Bay



1915

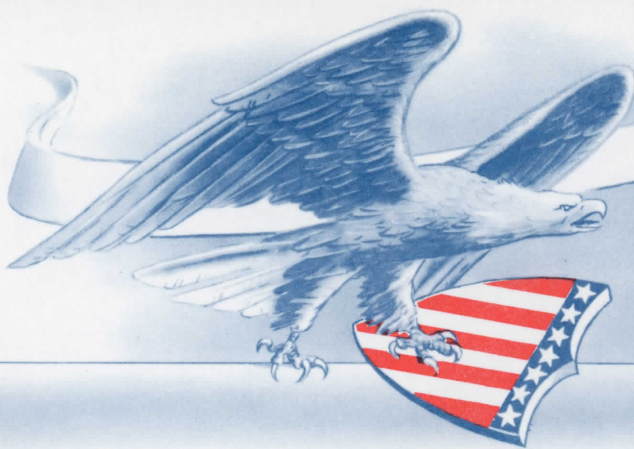


PERFORATED
10



These were first placed on sale perforated 12 at San Francisco, California, in 1912-1913, commemorating the opening of the Panama Canal and the discovery of the Pacific by Balboa in 1513. They were also intended to advertise the Panama Pacific Exposition. Due to the adoption of the 10 gauge late in 1914, the stamps were re-issued in 1915 perforated 10.





UNITED STATES
COMMEMORATIVES

BATTLE OF WHITE PLAINS

1926

INTERNATIONAL PHILATELIC EXHIBIT ON OCT. 16TH TO 23RD 1926
18771

18771

18771

NEW

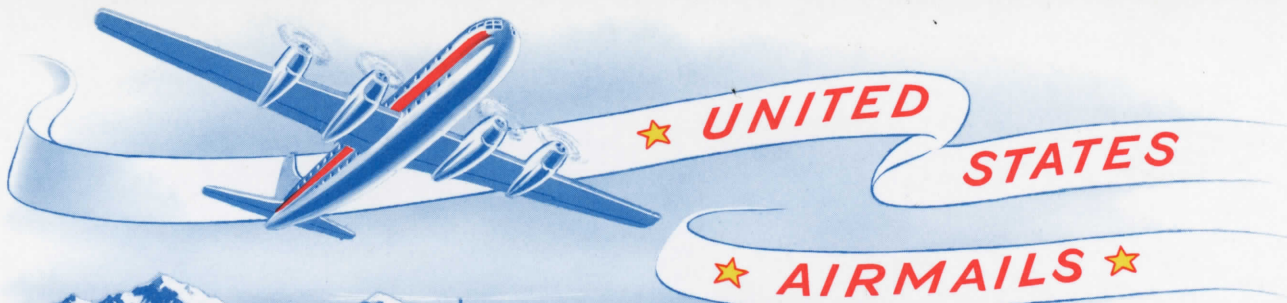
YORK

18771

N.Y.

U.S.A.

To commemorate the International Philatelic Exhibition in New York City (October 16-23, 1926), the Post Office Department issued the 2c White Plains stamp in souvenir sheet form. Each sheet included 25 stamps with an appropriate inscription in the top margin. This souvenir sheet was issued on October 18, 1926, the same day as the regular sheet variety.



FIRST AIR MAIL SERIES

1918



Early Mail Plane



Early Mail Plane



Early Mail Plane

In May 1918, an Act of Congress placed mail carrying by plane on an officially scheduled basis with the postage rate set at 24c. The first air mail stamp was released on May 13, 1918 in connection with the inauguration of air mail service from New York to Washington, D.C. The denomination was 24c and it was this stamp that created the famous inverted airplane error. The 16c denomination was first placed on sale July 11th followed by the 6c on December 10th.

SECOND AIR MAIL SERIES

1923



Propeller



Emblem of Mail Service



Early Biplane

Released primarily for use in the new night flying service between New York and San Francisco, the 1923 air mails were placed on sale in Washington during August. The 8c denomination on the 15th, the 16c on the 17th and the 24c on the 21st. New reduced rates were put into effect on a three-zone basis at 8c per ounce per zone, with each zone approximately 1,000 miles in length across the country.



MAP AIR MAILS

1926-27



Map of the United States



Map of the United States



Map of the United States

By 1925, air mail under government sponsorship became well established and as an aid to civilian aviation Congress decided to place the service on a contract basis with private flying interests. New rates were established . . . 10c per ounce up to 1,000 miles, 15c up to 1,500 miles and 20c beyond this mileage. For the new air rates three stamps were prepared and released during 1926-27 with one common design, a relief map of the United States.

LINDBERGH

1927



Spirit of St. Louis

Aviation was growing fast by 1927 with many attempts being made to cross the Atlantic non-stop. First to succeed was Charles A. Lindbergh who flew his "Spirit of St. Louis" from New York to Paris in May. This stamp, commemorating the crossing, was released June 18, 1927.

BEACON

1928



Airways Beacon

This stamp, engraved in red and blue, features the beacon light on Sherman Hill in the Rocky Mountains and a mail plane in flight. It was first placed on sale July 25, 1928 . . . the 5c Air Mail rate becoming effective on August 1st.



GRAF ZEPPELIN PAN-AMERICAN FLIGHT

1930



Graf Zeppelin over Ocean



Graf Zeppelin between Continents



Graf Zeppelin over Globe

Great interest in the mail carrying flights of the Graf Zeppelin prompted the Post Office Department to issue this set of three stamps in connection with the Europe-Pan American Flight. This was one of the more important flights of the great German airship which carried it from Germany to South America, thence to Lakehurst and back to Germany in a huge triangle. The stamps were placed on sale April 19, 1930 at Washington, D. C. and at selected post offices in the forty-eight states on April 21st.



WINGED GLOBE AIR MAILS

1930

FLAT PRESS



Winged Globe Emblem

1931

ROTARY PRESS



Winged Globe Emblem

1932



Winged Globe Emblem

1934



Winged Globe Emblem

General acceptance of this faster method of mail service resulted in a heavy demand for air mail stamps. This caused the discontinuance of the more cumbersome bicolor issue in favor of the speedier printed one color design. The issues above picture the insignia of an air mail pilot. The 5c violet appeared flat plate process perforation 11 on February 10, 1930 and by rotary press perforation 10½ x 11 on August 19, 1931. The same design was issued in an 8c olive green color on September 26, 1932 to conform with the new air rate. The 6c orange, also for a rate change, appeared July 1, 1934. Both these values were produced by rotary press, perforation 10½ x 11.

GRAF ZEPPELIN CENTURY OF PROGRESS FLIGHT

1933



Graf Zeppelin between Friedrichshafen and Chicago

Germany sent the Airship Graf Zeppelin as her messenger of good will to the CENTURY OF PROGRESS EXPOSITION in Chicago the Fall of 1933. The ship carried special souvenir letters for which the 50c stamp was issued on October 2, 1933.



TRANSPACIFIC

1937



China Clipper

1935



China Clipper

1937



China Clipper

For the inauguration of Pan American Clipper service to the Philippine Islands, a special 25c stamp was released on November 22, 1935. Almost two years later, on February 15, 1937, the 20c and 50c denominations were released in conjunction with the extension of the service to the China mainland.

TRANSATLANTIC

1939



Winged Globe

Similar in design to the "Winged Globe" air mails of the early 30's, this 30c denomination was issued for the establishment of Trans-Atlantic air mail service from the United States to Europe. It was first placed on sale in New York City May 16, 1939, eve of the inauguration of the new route.

AIR SPECIAL DELIVERY

1934



Great Seal of the United States

The first combination adhesive to prepay two distinct types of service, this stamp . . . 6c air mail and 10c special delivery . . . was first placed on sale at the American Air Mail Society Convention in Chicago, August 30, 1934.

1936



Great Seal of the United States

Similar in design to the issue released in 1934, this stamp, printed in two colors of red and blue, was placed on sale at Washington, D.C. February 10, 1936. The color improvement was to make air mail special delivery mail more distinguishable to those working the mails in our nation's post offices.

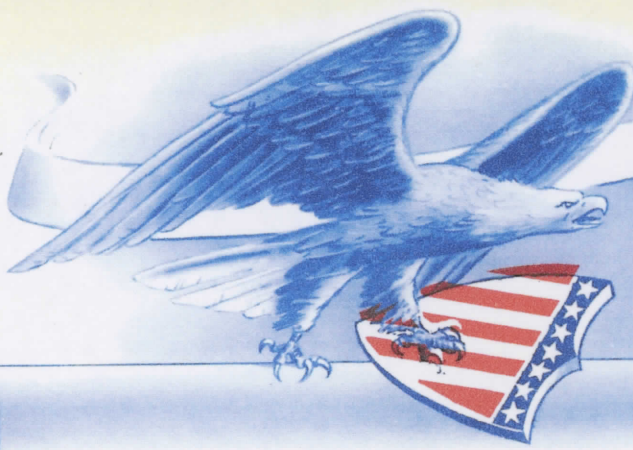
AMERICAN EAGLE

1938



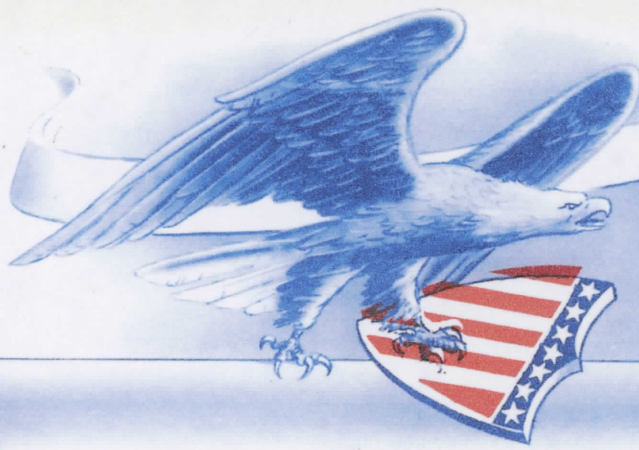
American Eagle

As part of the celebration of National Air Mail Week and for greater efficiency in recognizing air mail matter from ordinary mail, this stamp was released on May 14, 1938. St. Petersburg, Fla., where the first air passenger flight was made, and Dayton, Ohio, home of the Wright Brothers, were the official first day cities.

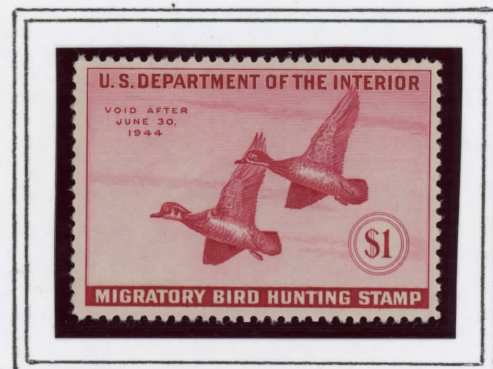


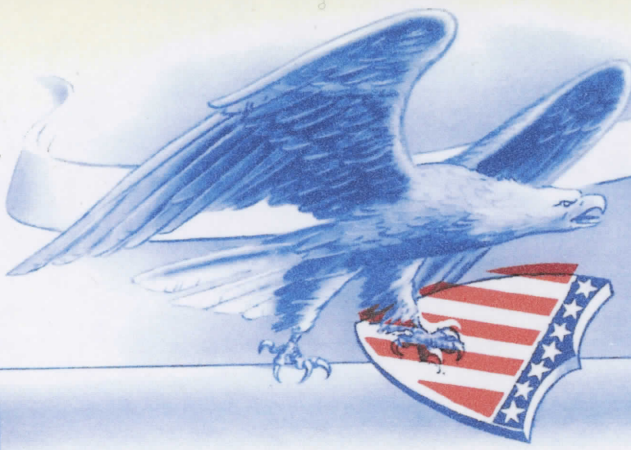
UNITED STATES
COMMEMORATIVES





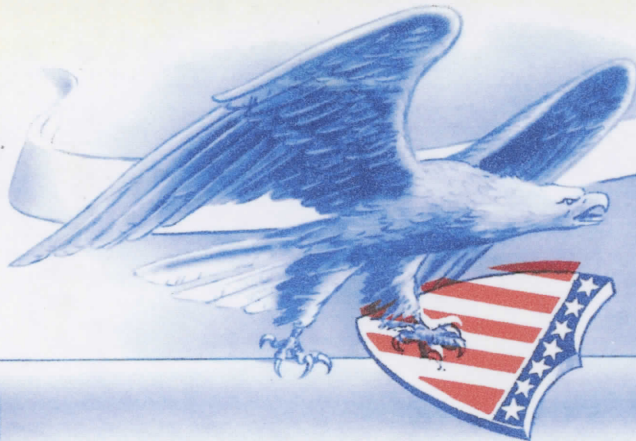
UNITED STATES
COMMEMORATIVES





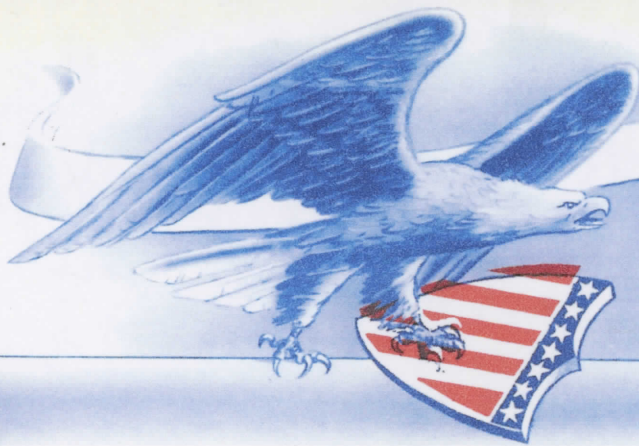
UNITED STATES
COMMEMORATIVES



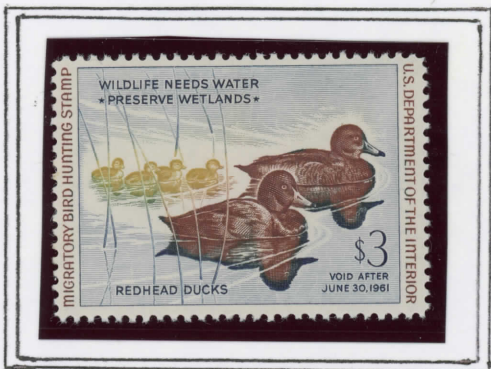


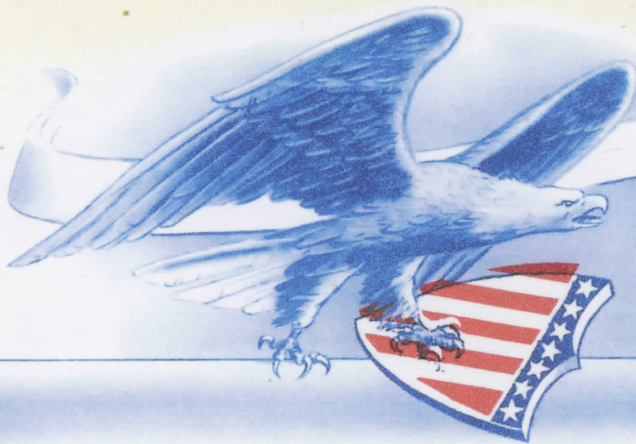
UNITED STATES
COMMEMORATIVES





UNITED STATES
COMMEMORATIVES

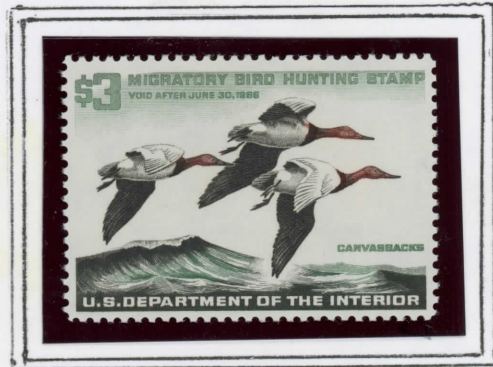




UNITED STATES
COMMEMORATIVES



31



34



36