

REVENUE

Second Issue

1871

Perforated



REVENUE

Second Issue

1871



\$1.30
BLUE
AND BLACK

(R119)
\$22.00



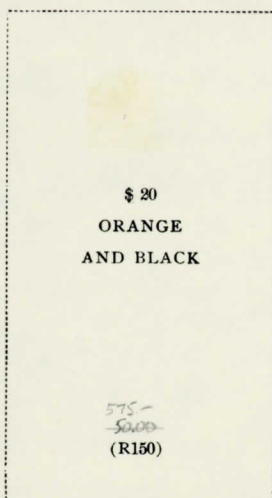
\$1.60
BLUE
AND BLACK

(R121)
\$31.00



REVENUE

Third Issue
1871-72



250-

Error of Color

50-

400-

\$ 20
ORANGE
AND BLACK

575-
5000
(R150)

600-

Error of Color 600

DOUBLE TRANSFER 3mm South

POSITION 57



57
D.T.

58



56

57
D.T.



56

57
D.T.



MF

KL

DT?



Scratch
70



69

Scratch
70



Scratch
70



↑
Scratch



22

23
D.T.



23
D.T.



24



Late



Late



MF

Double Transfer
Position 23

620 each

32

93

34



D.T.
Pos 32



D.T.
Pos 32



D.T.
Pos 32



D.T.
Pos 32



DT
Pos 32



DT
Pos 32



DT
Pos 32



DT
Pos 32



DT
Pos 32



DT
Pos 57



DT
Pos 57



DT
Pos 57



DT
Pos 57

Pos 42
KL6
DT

← same →

← same →

← same →

← same →

42



D.T.
Pos 42

Double Transfer
Pos 42

Pos 41

D.T.
Pos 42

54



Pos 54

← same →

← same →



Pos 44



D.T.
KL3
Pos 44



Pos 44

← same →

KL2
Top Row
← same →
23,9,10



Pos 45



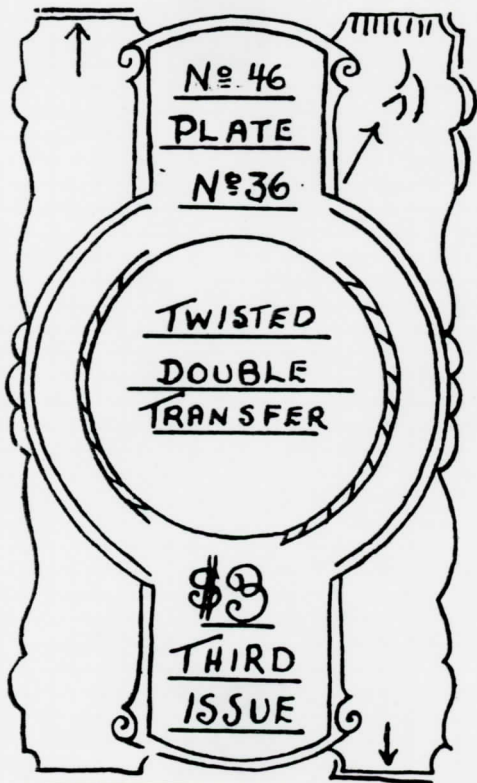
D.T.
KL1
Pos 45



DT
Pos 1



DT
Pos 1

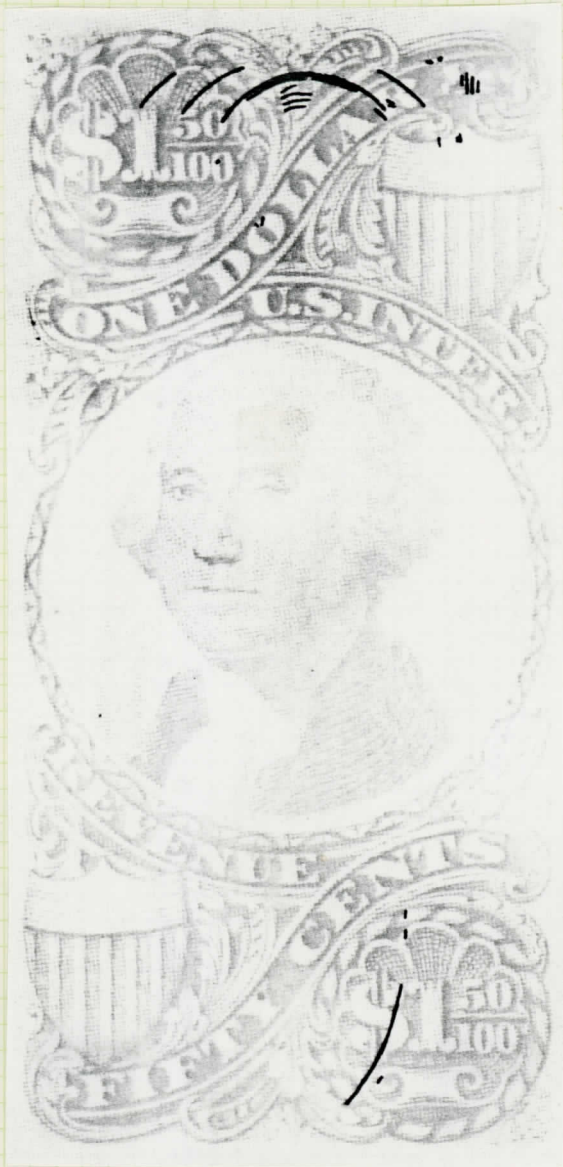


D.T. Position 46

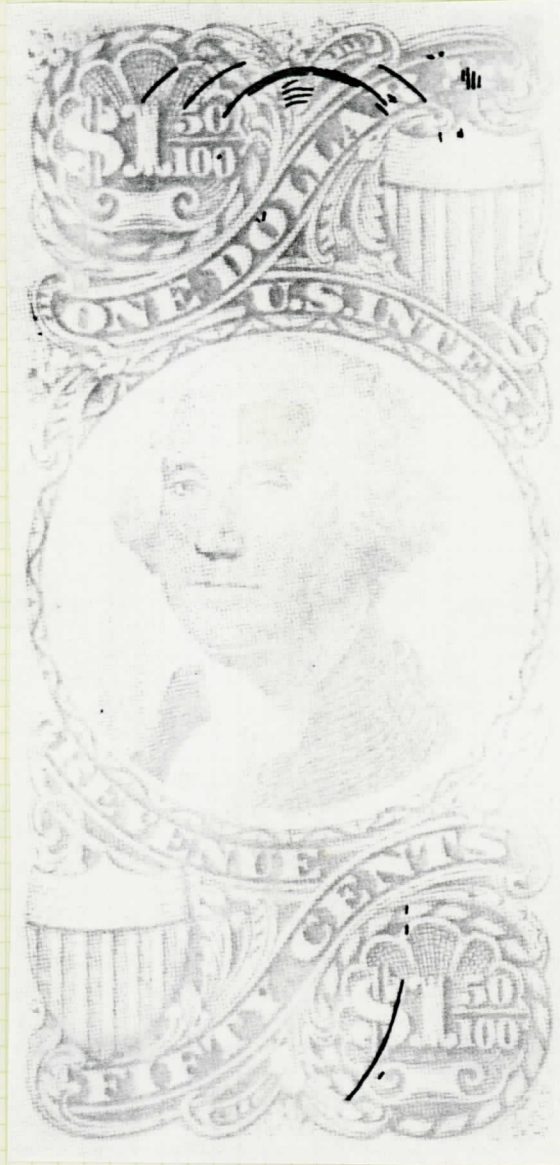
1	2	3	4	5	6	7	8	9	10	11	12
13											24
25											36
37							→		D.T. 46		48
49											60
61	62	63	64	65	66	67	68	69	70	71	72

PLATE #36

Design of \$1.00 Stamp on
the \$1.50 Stamp.



FOREIGN TRANSFER
Design of \$1.00 Stamp on
the \$1.50 Stamp.



cat \$750.00
each