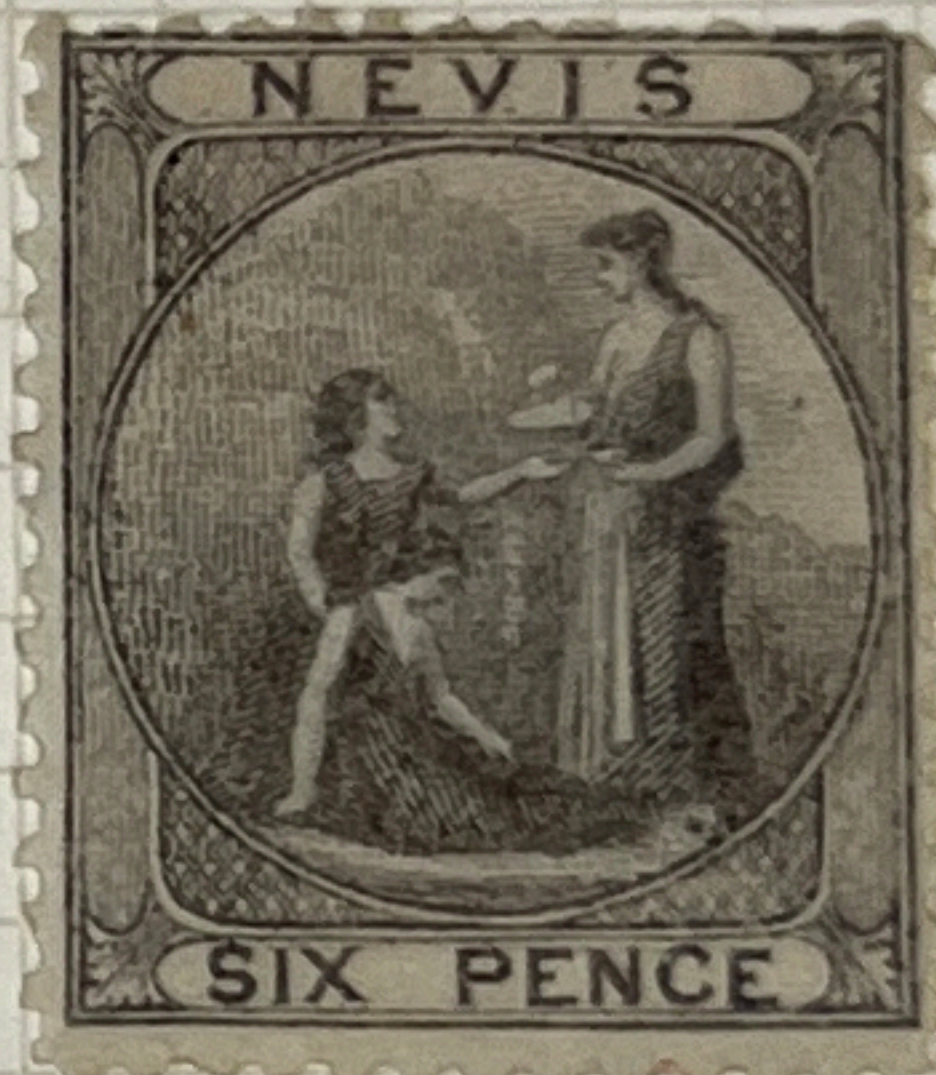


BLUISH PAPER

1861



GRAYISH PAPER



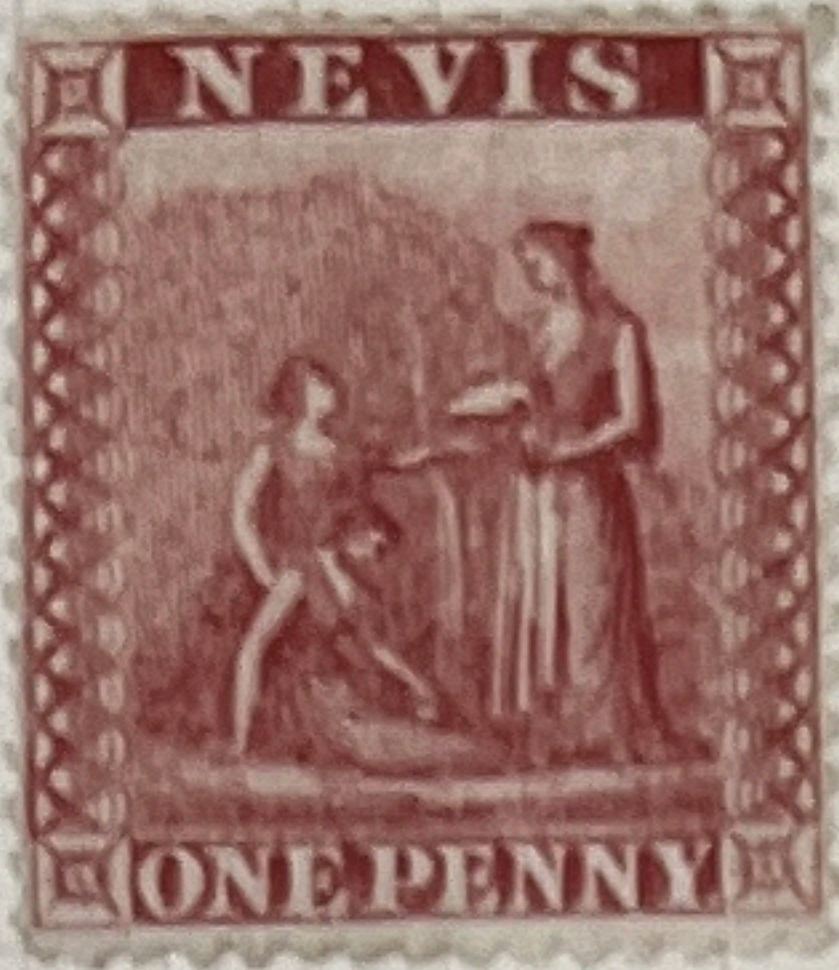
TE PAPER

1867

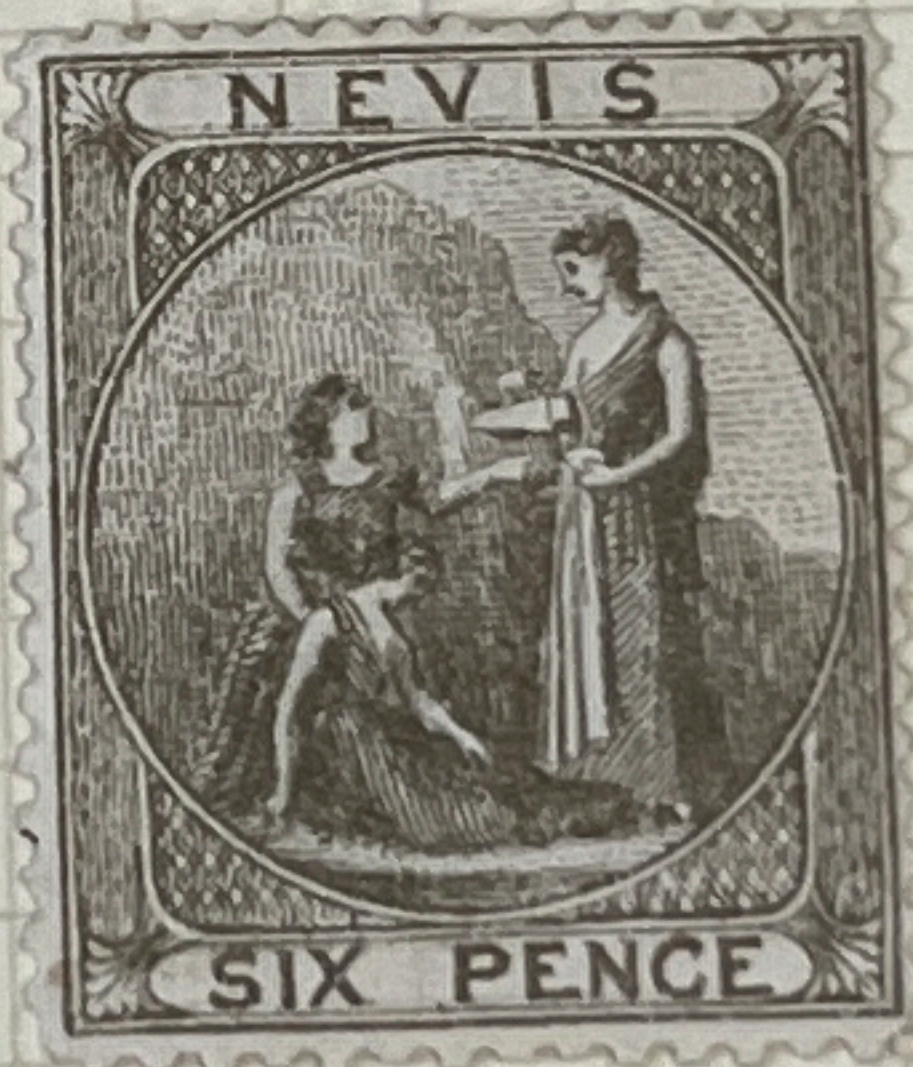


LITHOGRAPHED

1876



RETOUCHED



PERF 11 1/2



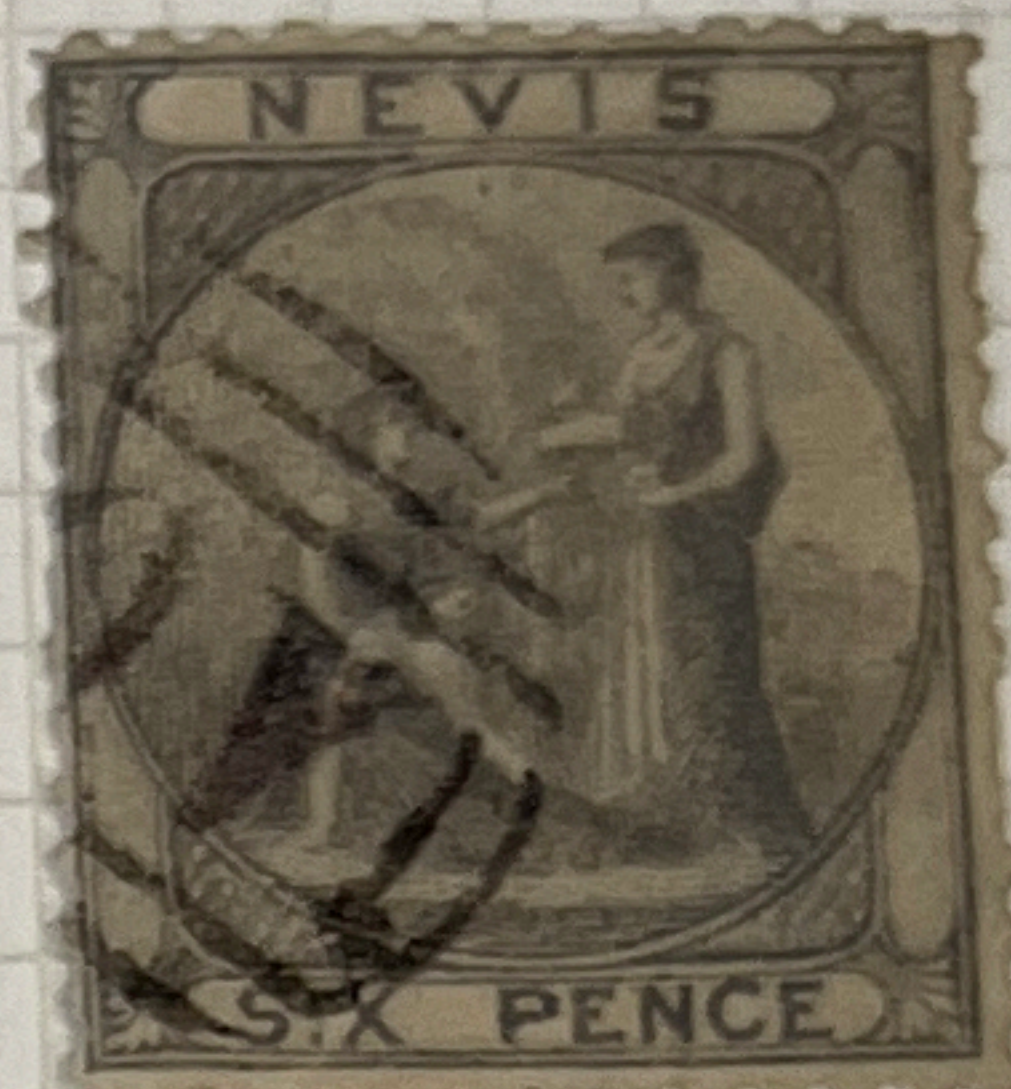
SH PAPER

1861



SH PAPER

5



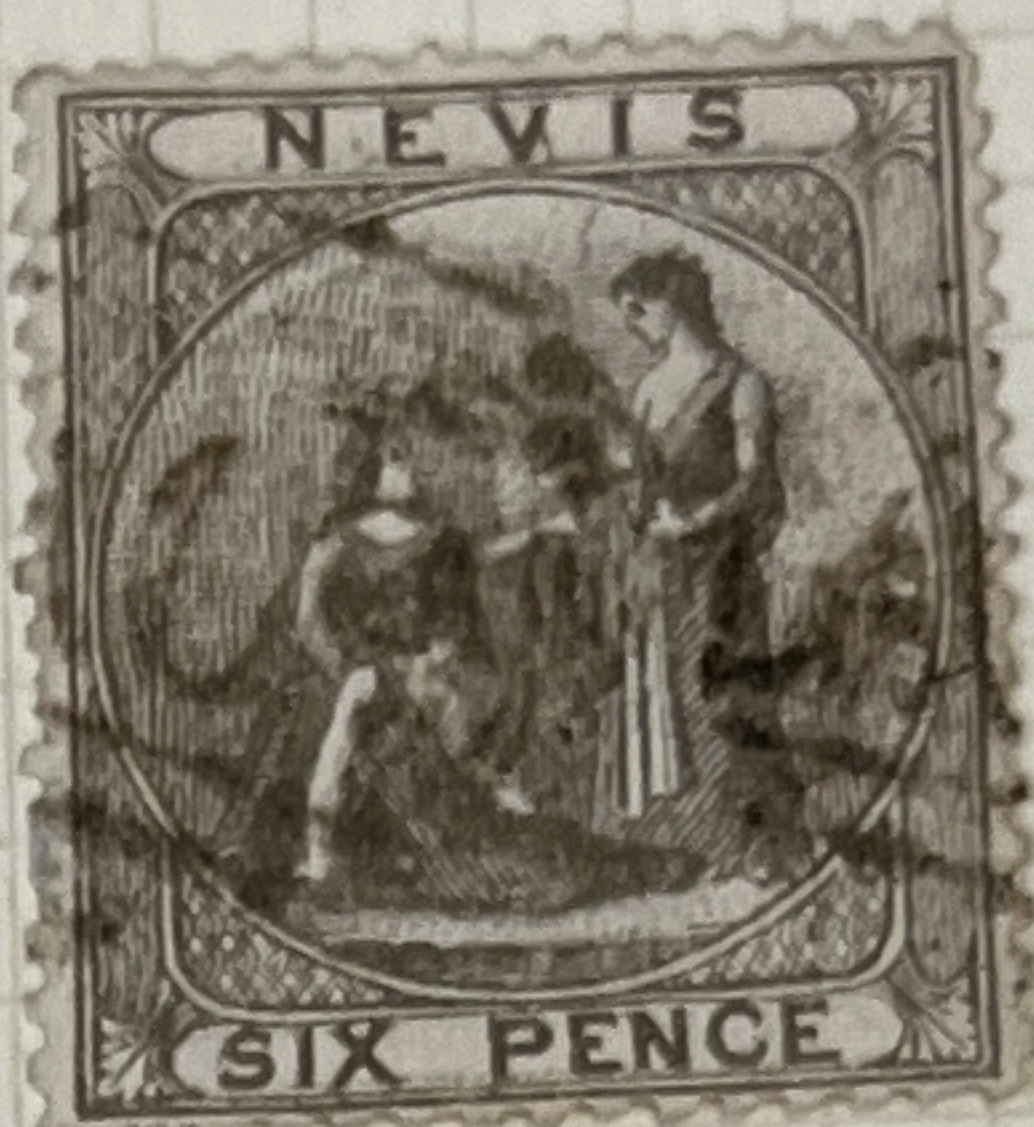
PER

1867



GRAPHED

1876



PROOF



CALS

1882



1876

RECONSTRUCTED SHEET



NO 15-15A

1879-80



1882



CROWN CC

1879-80



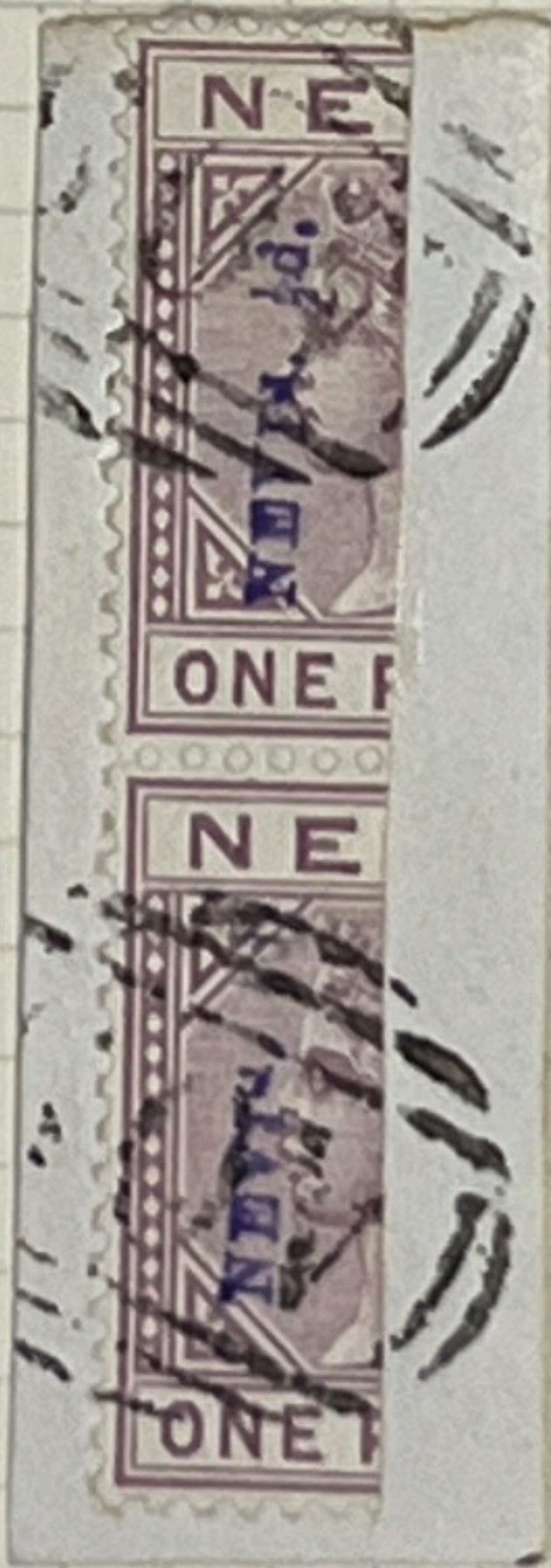
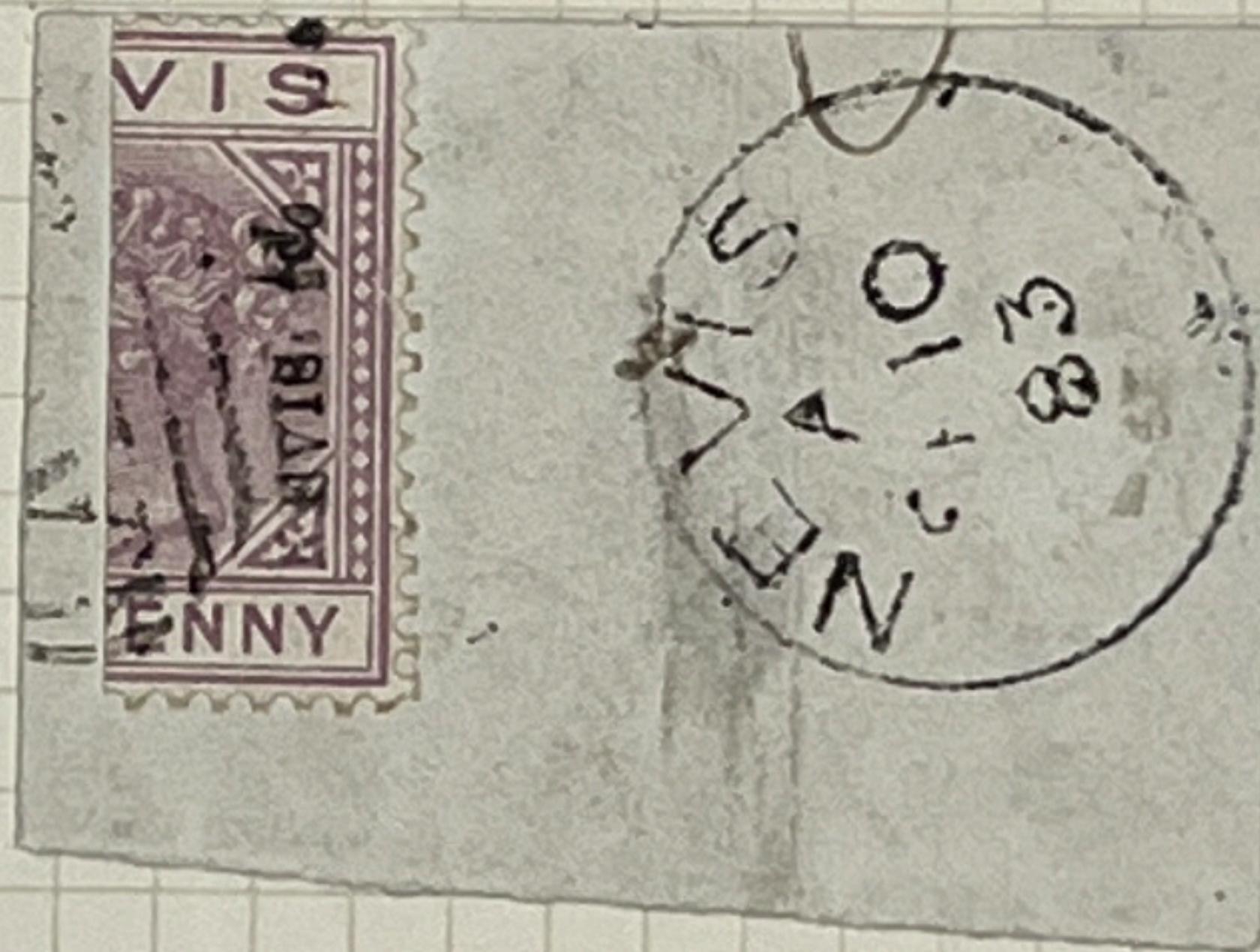
20

CROWN CA

1882



1883



DOUBLE
SURCH.

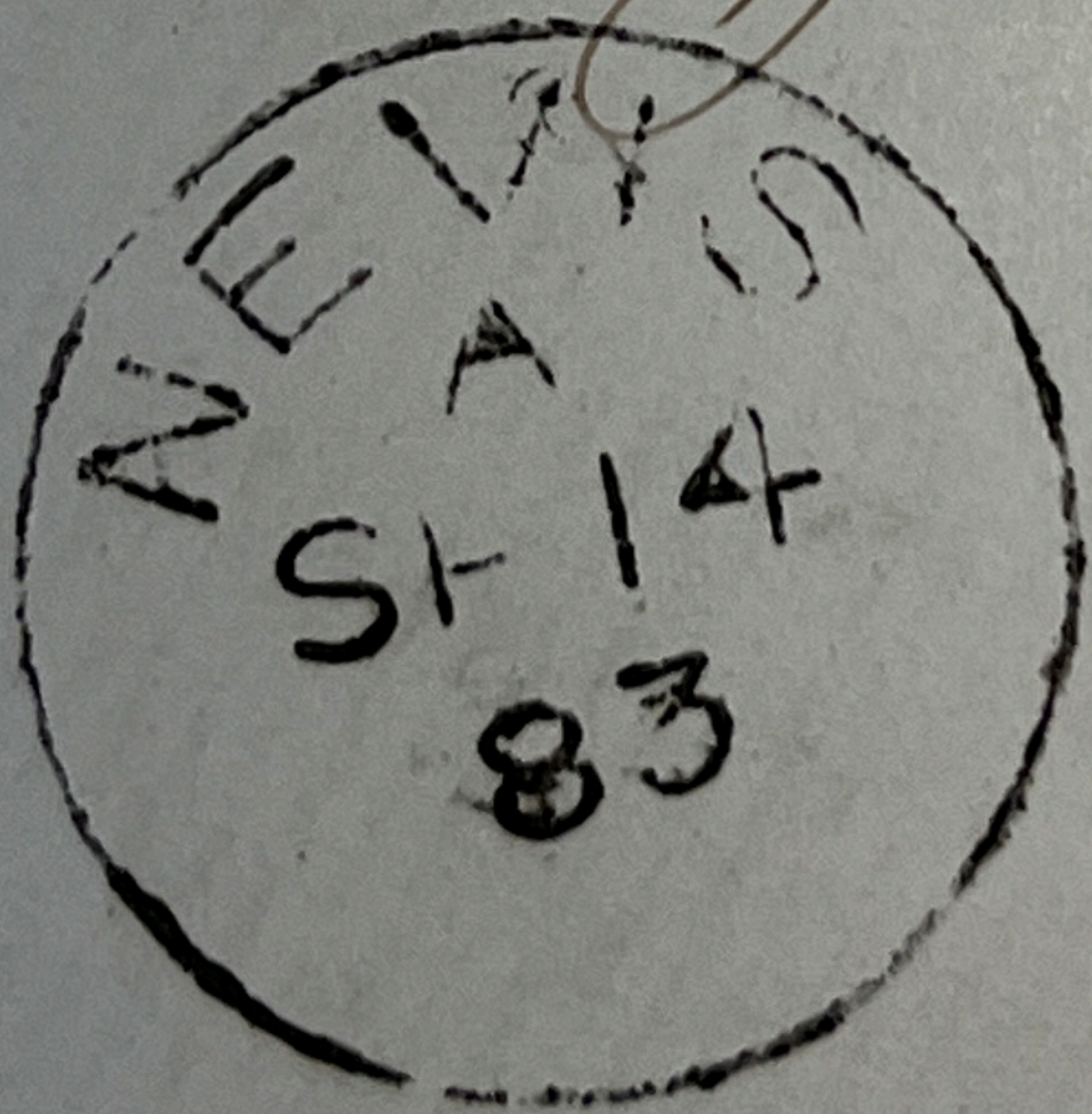
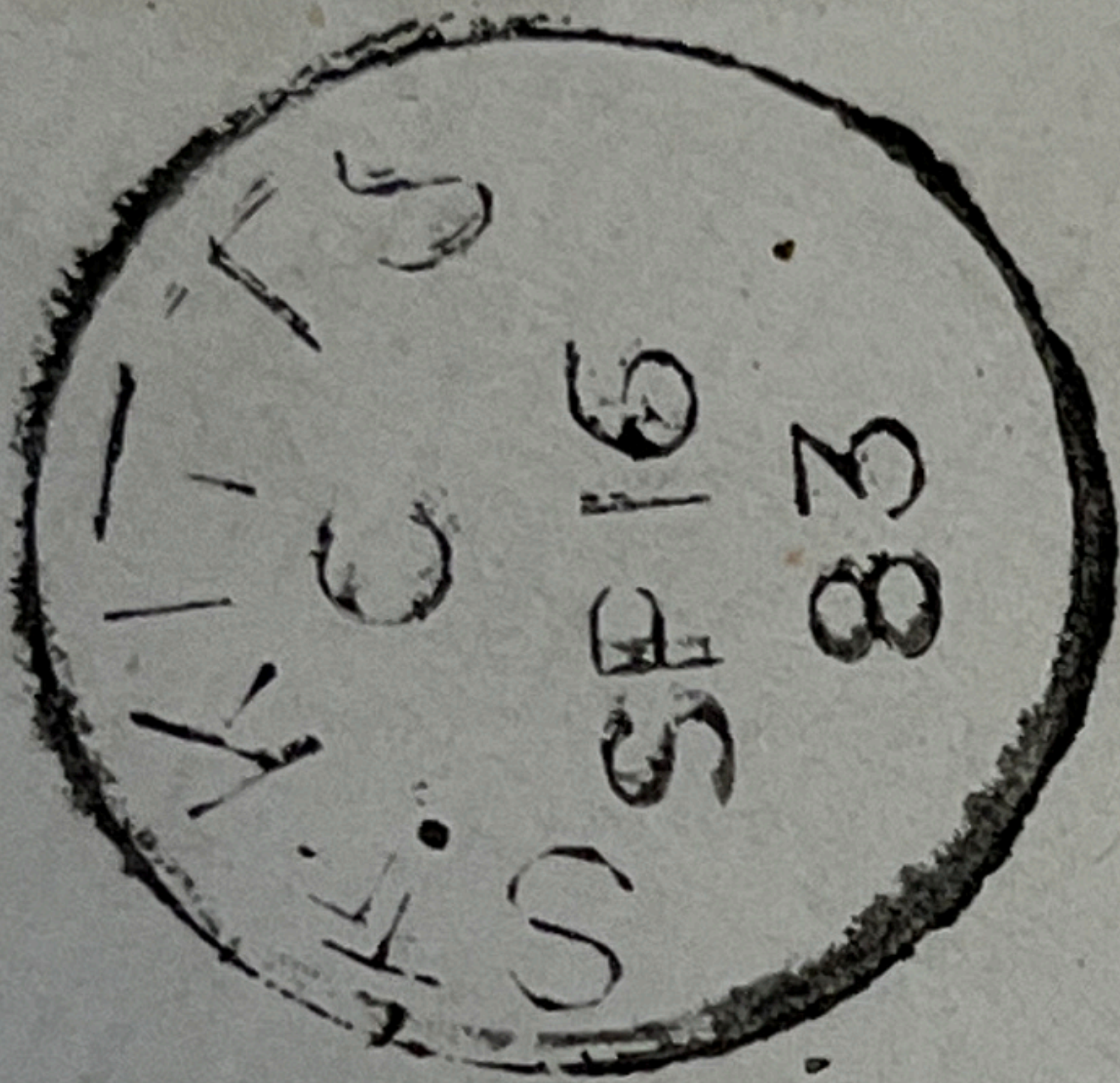
#32

1883-90





1883



*P. J. Bridg
Co. Am
St.*