

BR. COLUMBIA 1860 Cat. Price 450.- Our Price 150.-
#2a* tear at bottom



NEW BRUNSWICK #1 sm fits CAT 575- PR. 185-



NEW BRUNSWICK #1 VFsm fits CAT. 575.00 \$220-



NEW BRUNSWICK #1 sm fits CAT 575.00 200-



NEW BRUNSWICK #1 sm fits 3MMGN CAT 575.- PRICE 180



NEW BRUNSWICK sm fits #1 2MMGN CAT 575- 180-



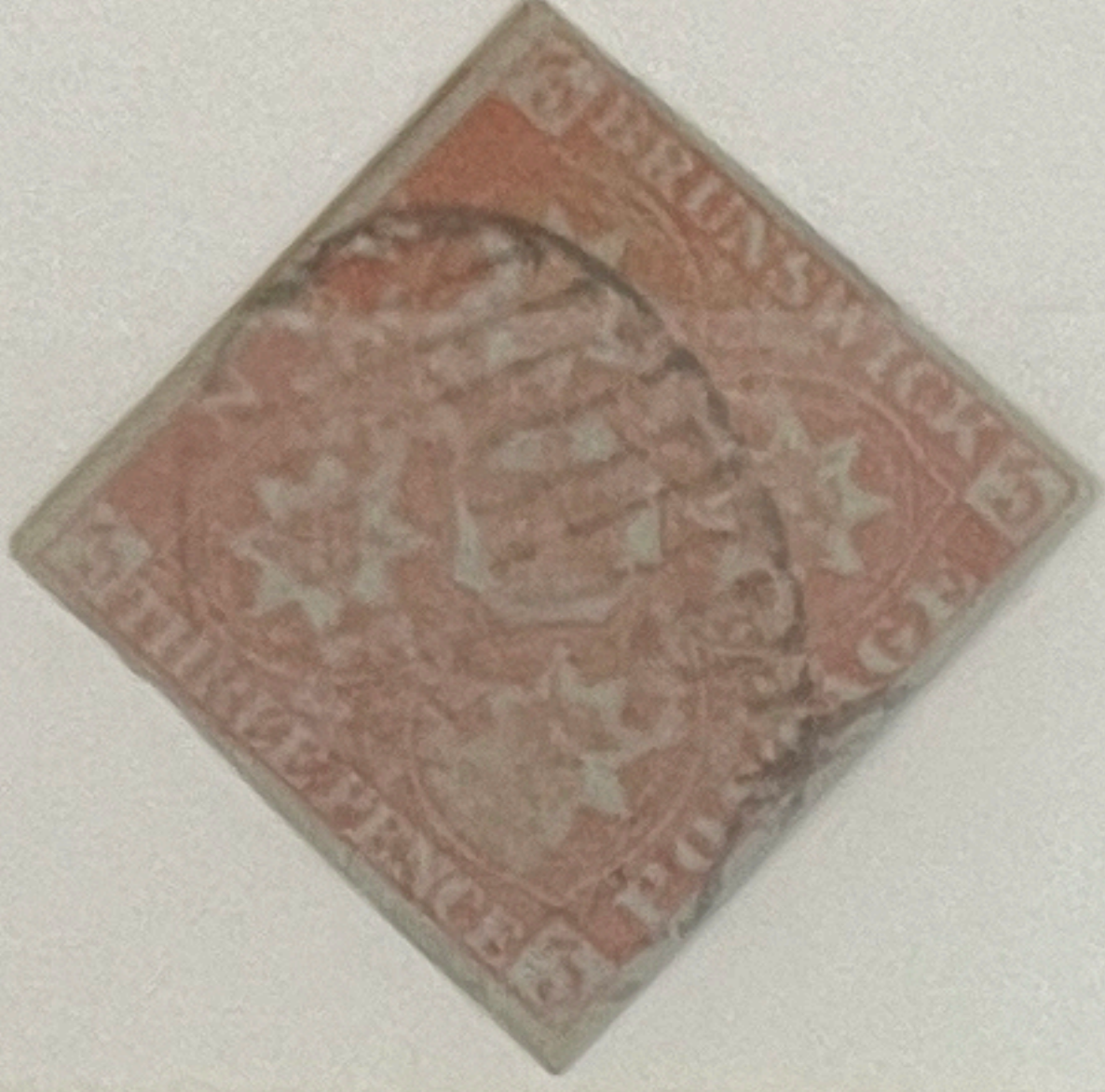
NEW BRUNSWICK
#1a VFapp sm fits cat 675.00

250-



NEW BRUNSWICK 1851
#1a thin VFapp cat. 675.00

180-



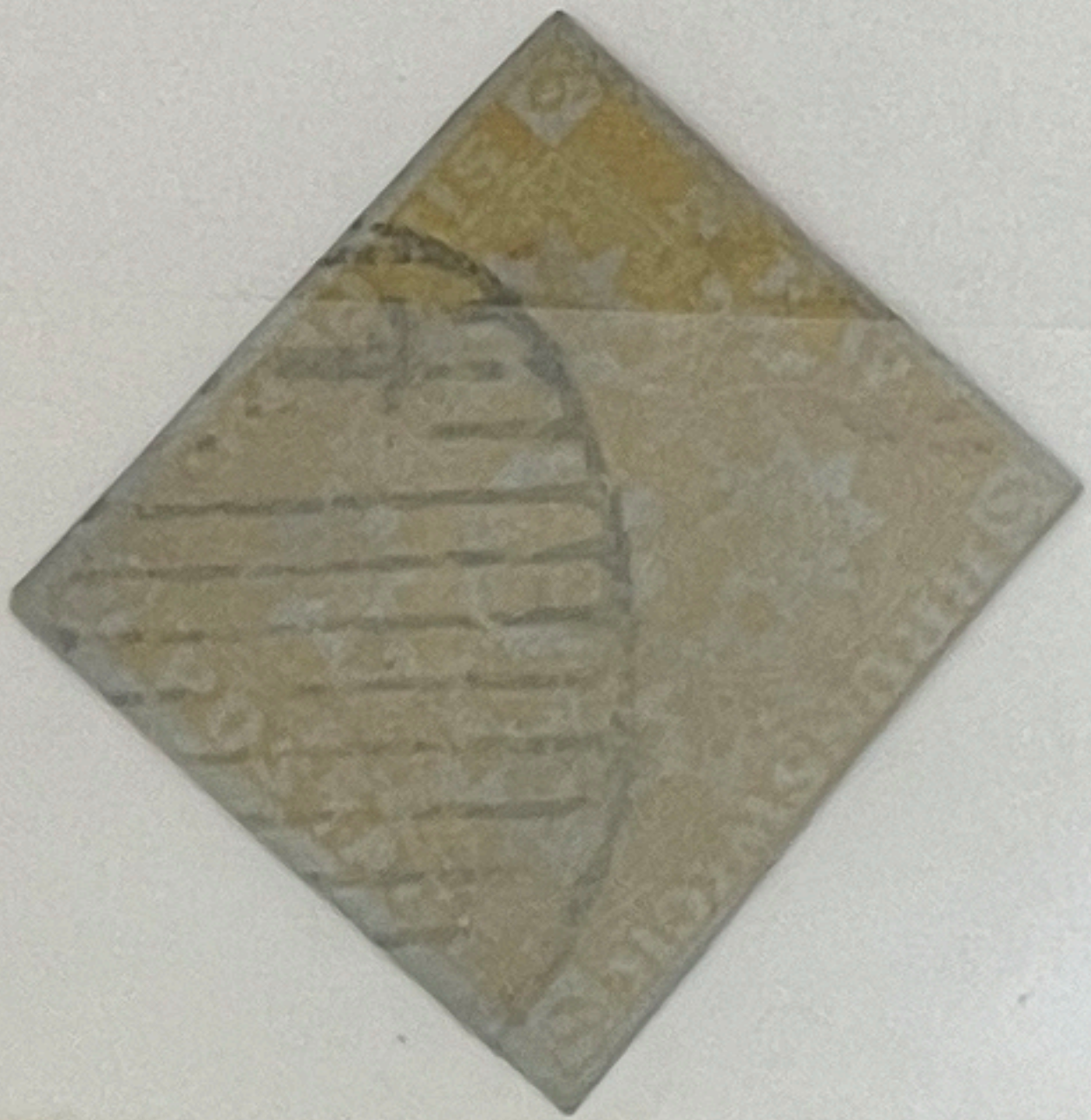
NEW BRUNSWICK
1a. Fapp sm cat. 625.00

145-



NEW BRUNSWICK
2c sm fits cat 1,280.00

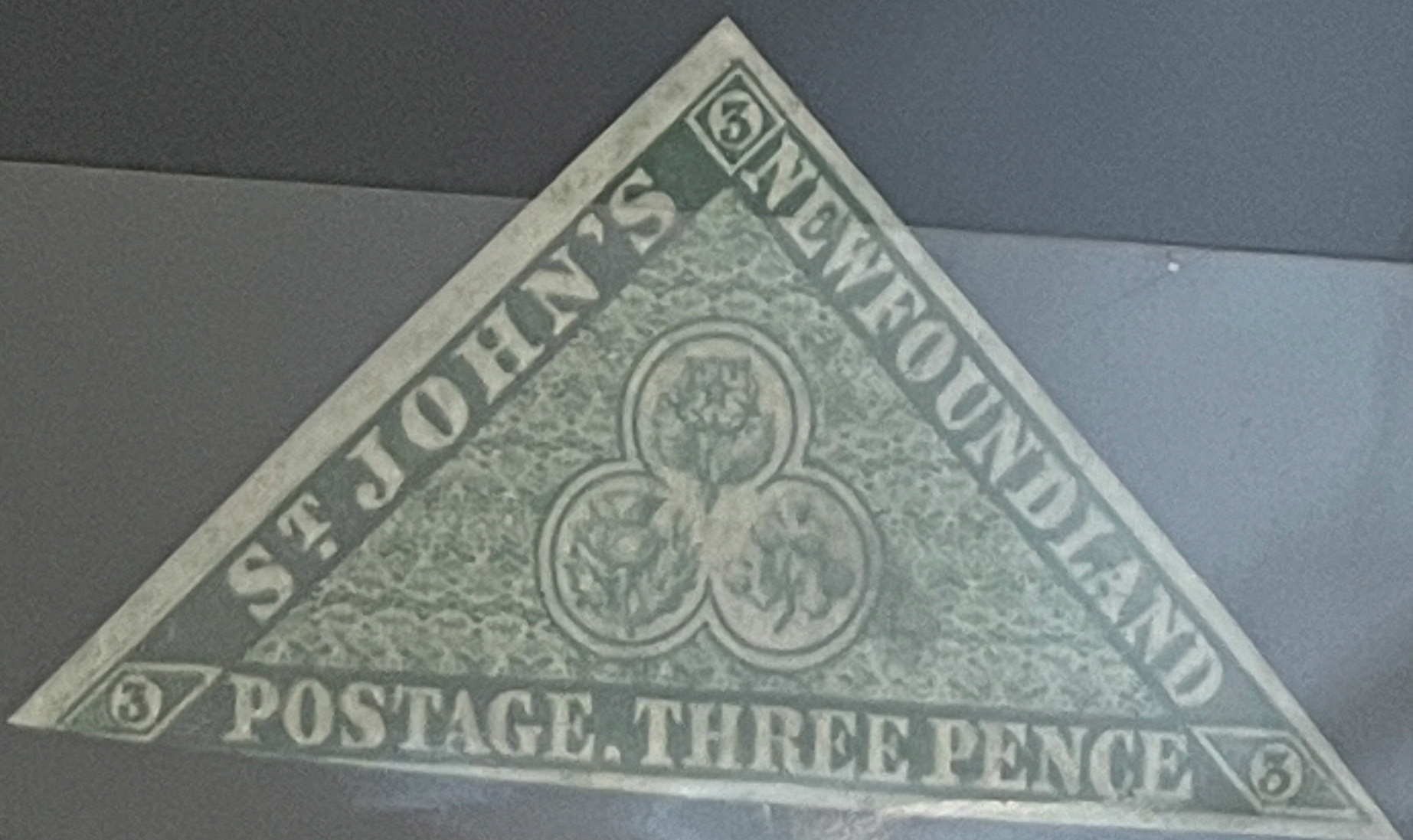
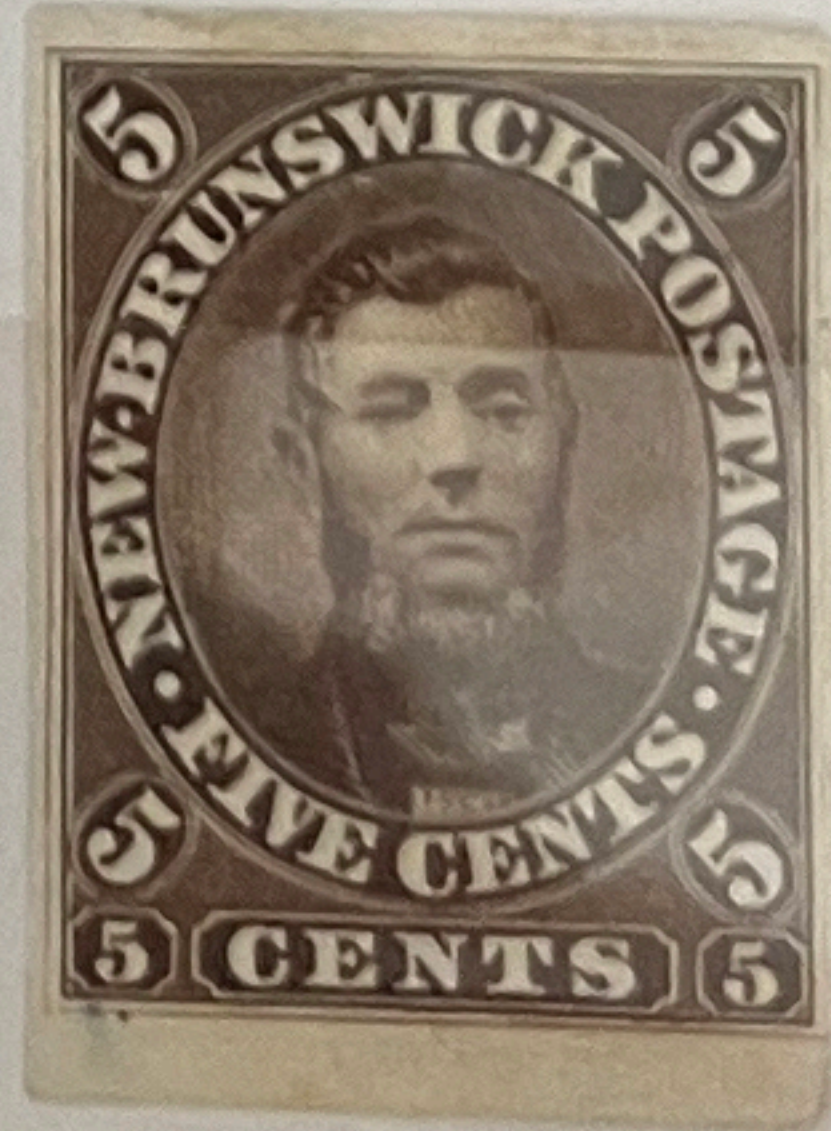
400-



NEW BRUNSWICK
5 INDIA PROOF Jockey Ham E 400- 200-

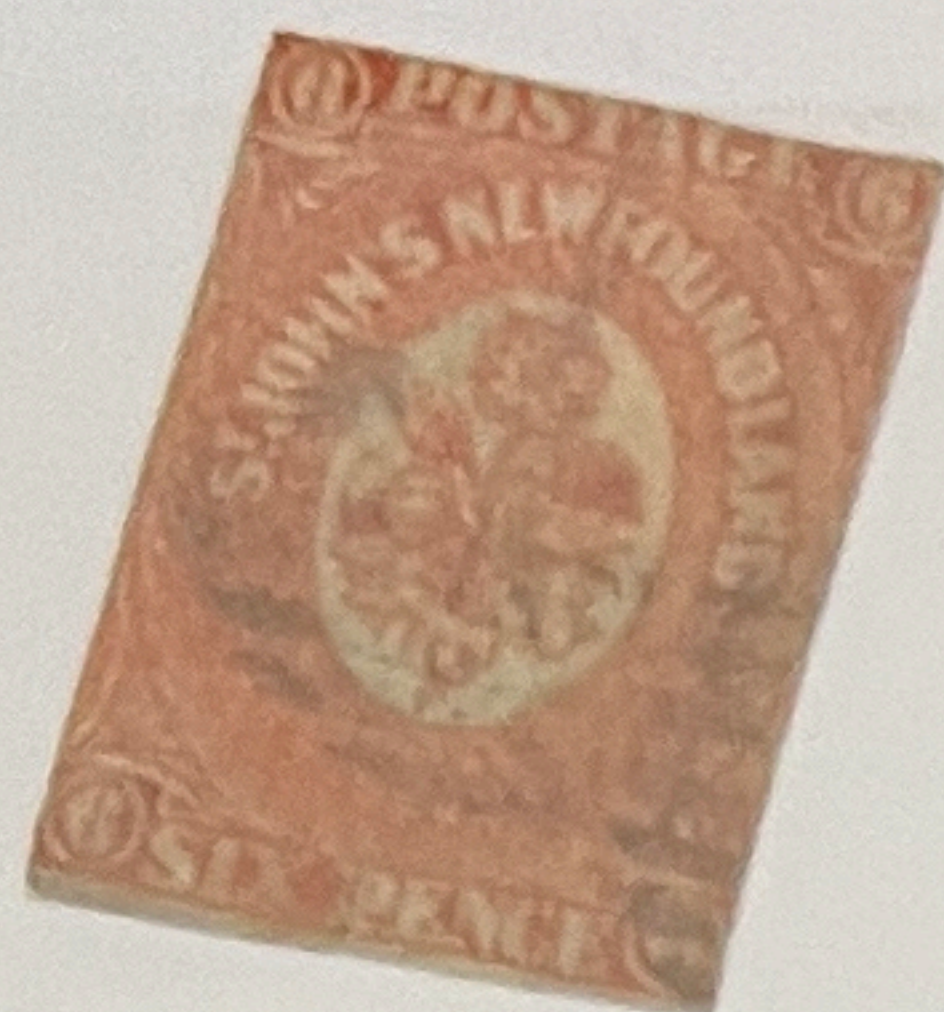
NEW
3 # sm. thin

800- Price 260-



Style No. GK 102BK

NEWF. cut close
#13 sm fits
Cat. Price 1,100 Our Price 350-

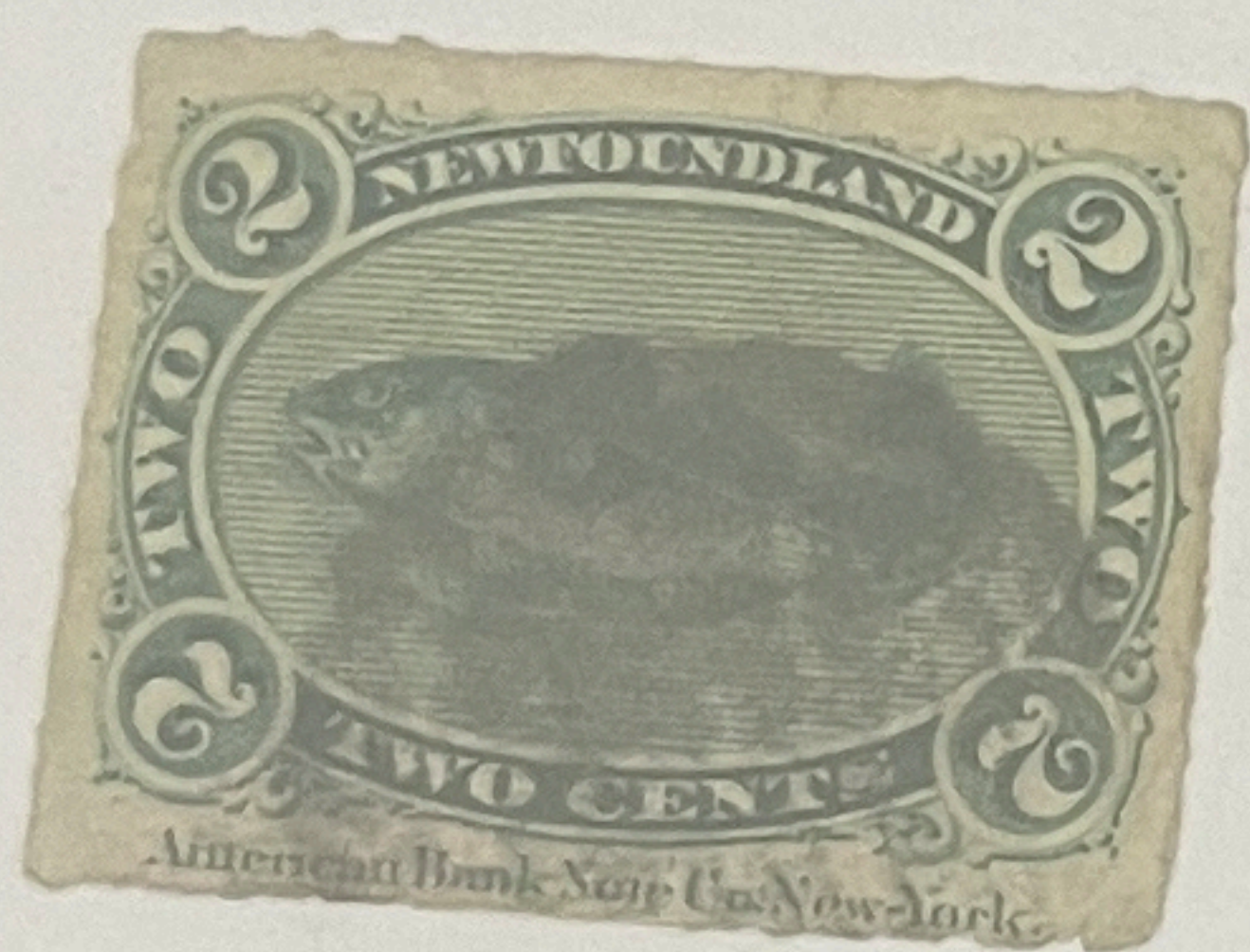


NEWF.
25 SOME TRIMMING
Cat. Price ~~600~~ 600 Our Price 135.00



102

NEWF. 'captured'
38 sm sm inscription 52.50 Price 75-



Style No. GK 102a

NEWFOUNDLAND
53 sm sm
Cat. Price 350 Our Price 120-



102

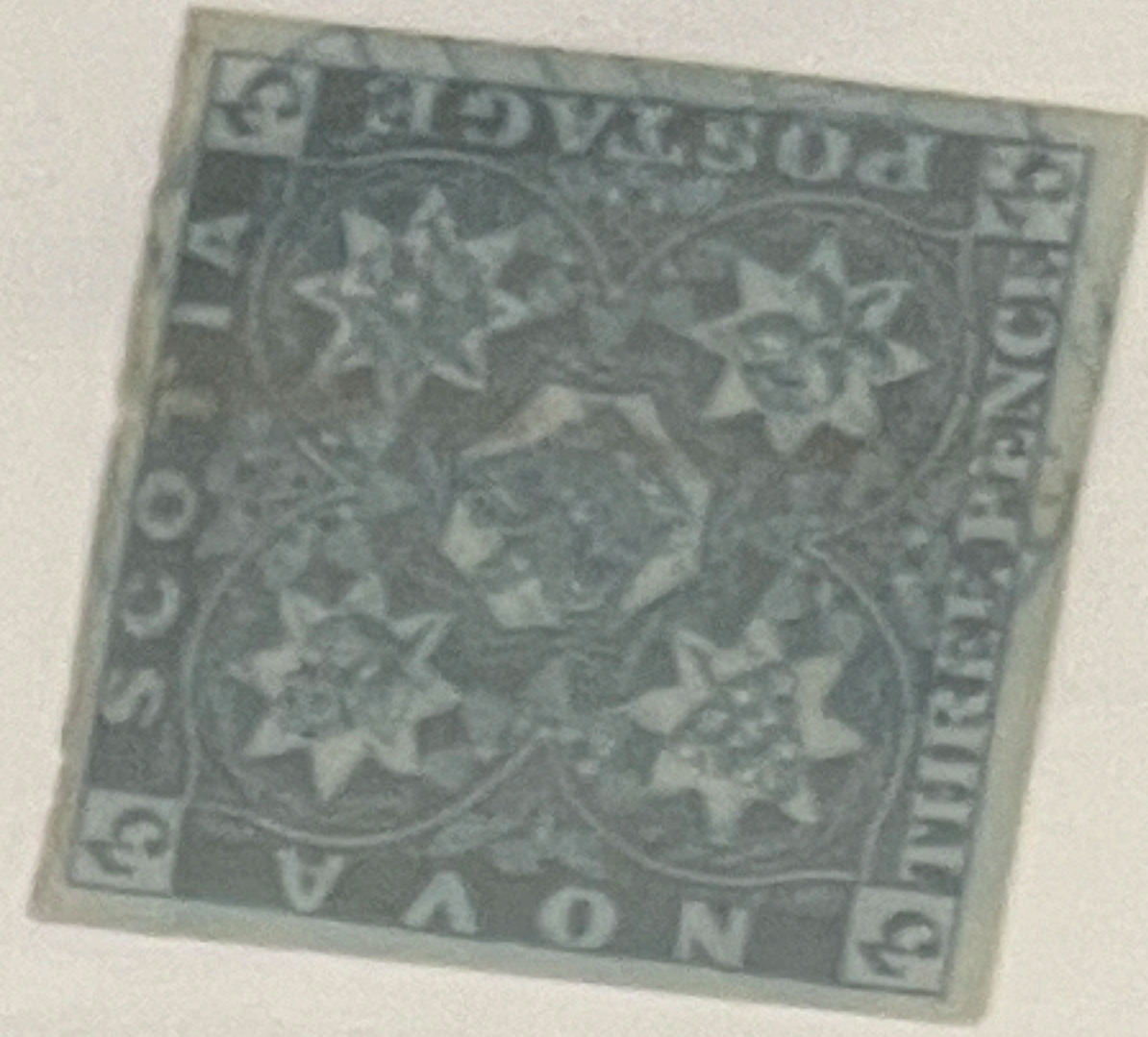
NOVA SCOTIA sm seal tear
Appears * (2500-) counted 525 Price 200-
ASQ



Style No. GK 102BK

NOVA SCOTIA
2^o 2 HALVES
REPAIRED DOWRY

Cat. Price 250- Our Price 80-



102

NOVA SCOTIA
2 others Cat. 250- 80-



NOVA SCOTIA
2^o cut in sm flt Cat. 250- 72.00-



NOVA SCOTIA
2^o sm flt 240- Price 80.-



NOVA SCOTIA
3 cut close, flt 300.00 560-



Style No. GK 102a

NOVA SCOTIA
3 few 1+9
TEARS, FAULTS, NO GUM
(AT 2,250)
PR. 450-



NOVA SCOTIA
3 nice Apr sm things
300- Price 90-



le No. GK 102BK

NOVA SCOTIA sw fls
4 3 MARGINS/CLOSE
CAT 850.00
PR. 200



P.E.I. 1861
#1 NO GUM/TNDS/RARE
CAT. 1,100
PR. \$150-

P.E.I. 1861
#1 BAD FAULTS
Cat. Price 300-
Our Price 30-



P.E.I. 1861
#2 BAD FAULTS

Cat. Price 750.- Our Price 95.-



P.E.I.
2 @ on piece fits

750 - Price 190 -



Style No. GK 102BK

P.E.I. 1861
#3 BAD FAULTS

Cat. Price 1,200.- Our Price 120.-



102

CAT \$750.00 PRICE \$190-
MMD LEFT WIDE MARGIN 19 RARE



P.E.I. 1861 VG ONLY CAT 1,200
3 USED PERF PLAYS, RARE

PR. ~~580~~
450-

100 Our Price 180 -



102