

2nd Issue - Forerunners

Butler & Carpenter, printers of the first issue of revenue stamps, were instructed on 3 Oct 1867 to, "submit new stamp models each one to have for its vignette the coat of arms of a state of the Union".

The "Boston Book" records nine models including



\$ 3-50 with the Arms of the State of Rhode Island.



Delaware

A \$ 25 value is not recorded.

The vignette is thought to contain the Arms of the State of Philadelphia.

? Turner #78 - 248 printed

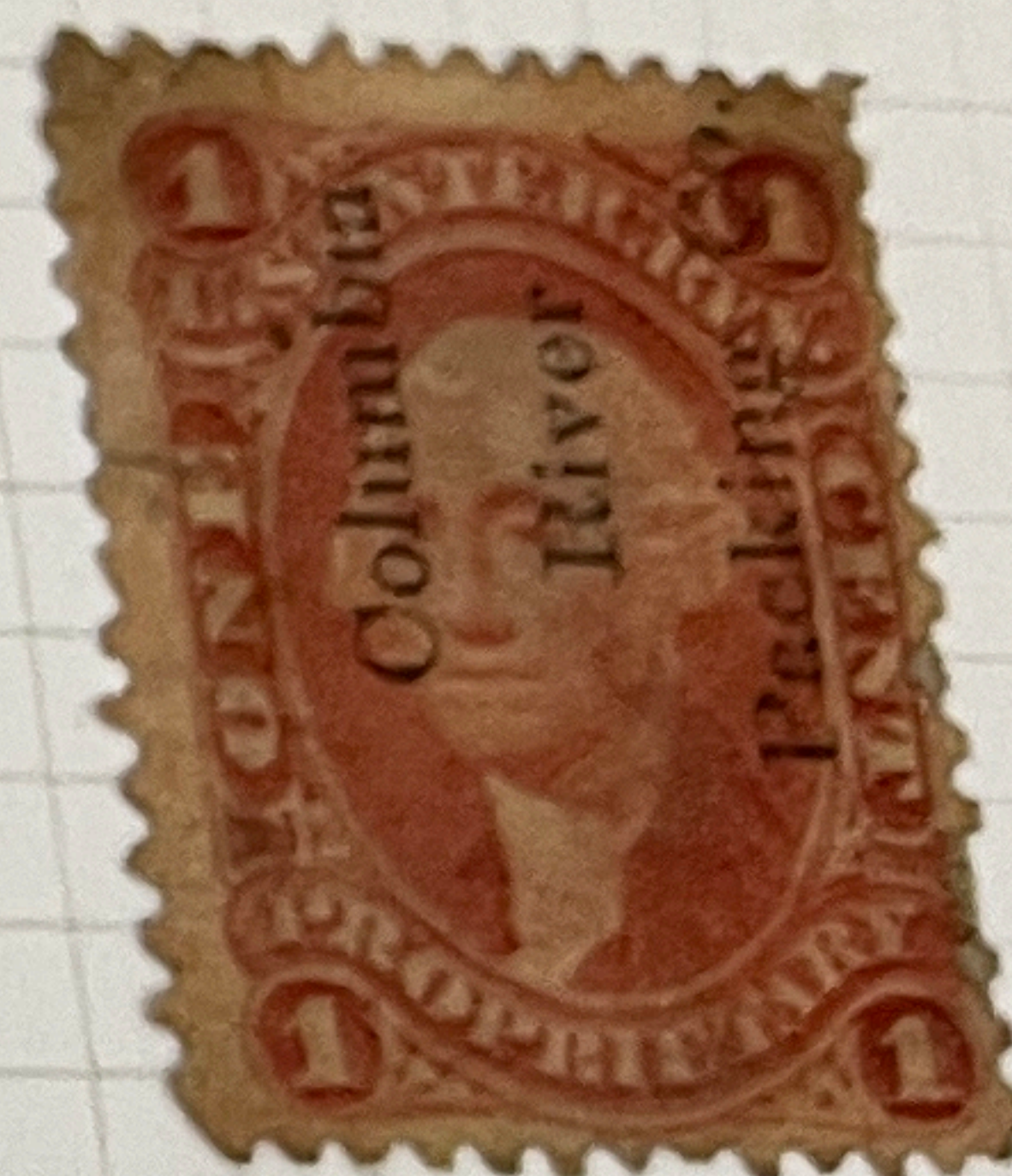
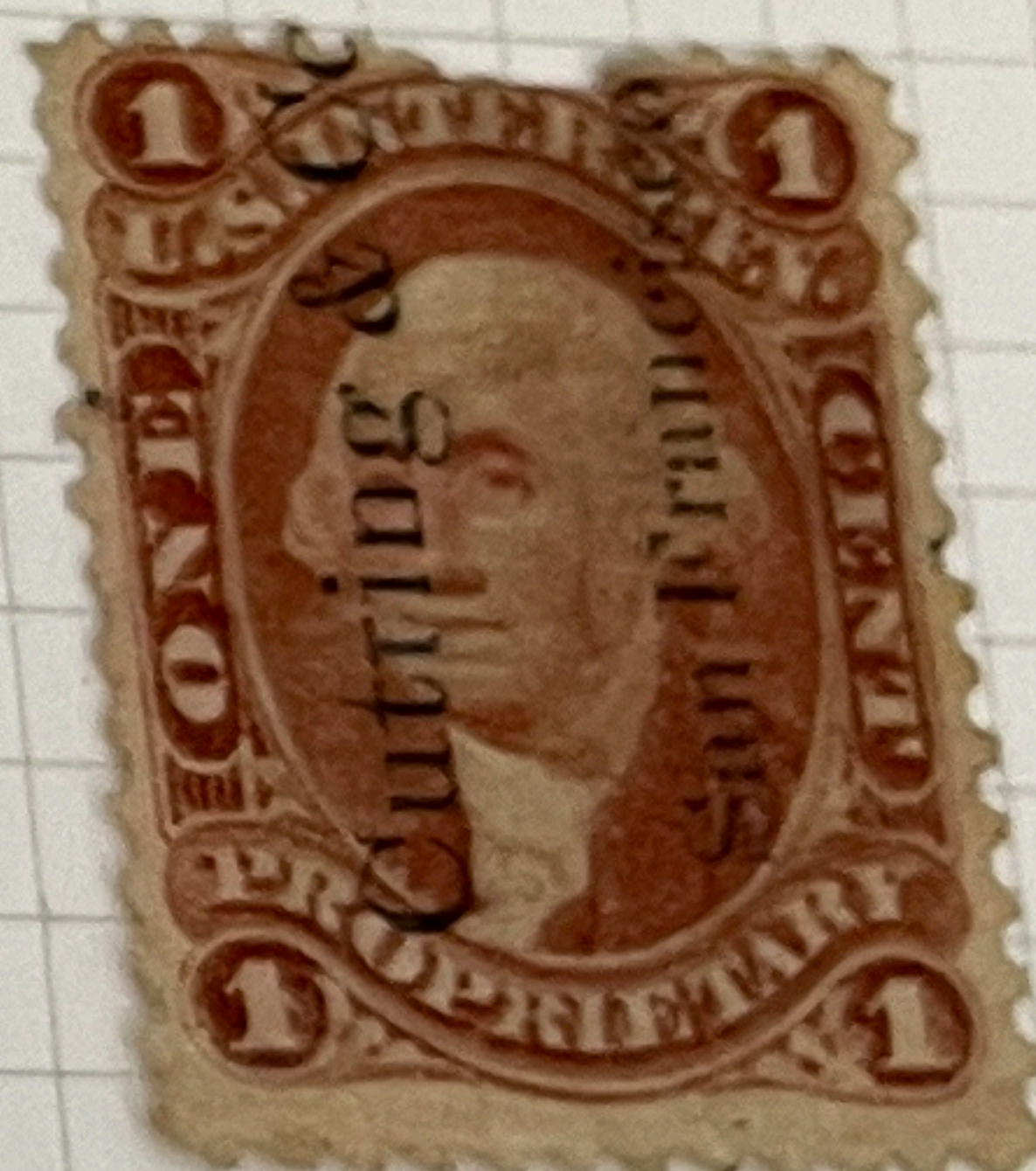
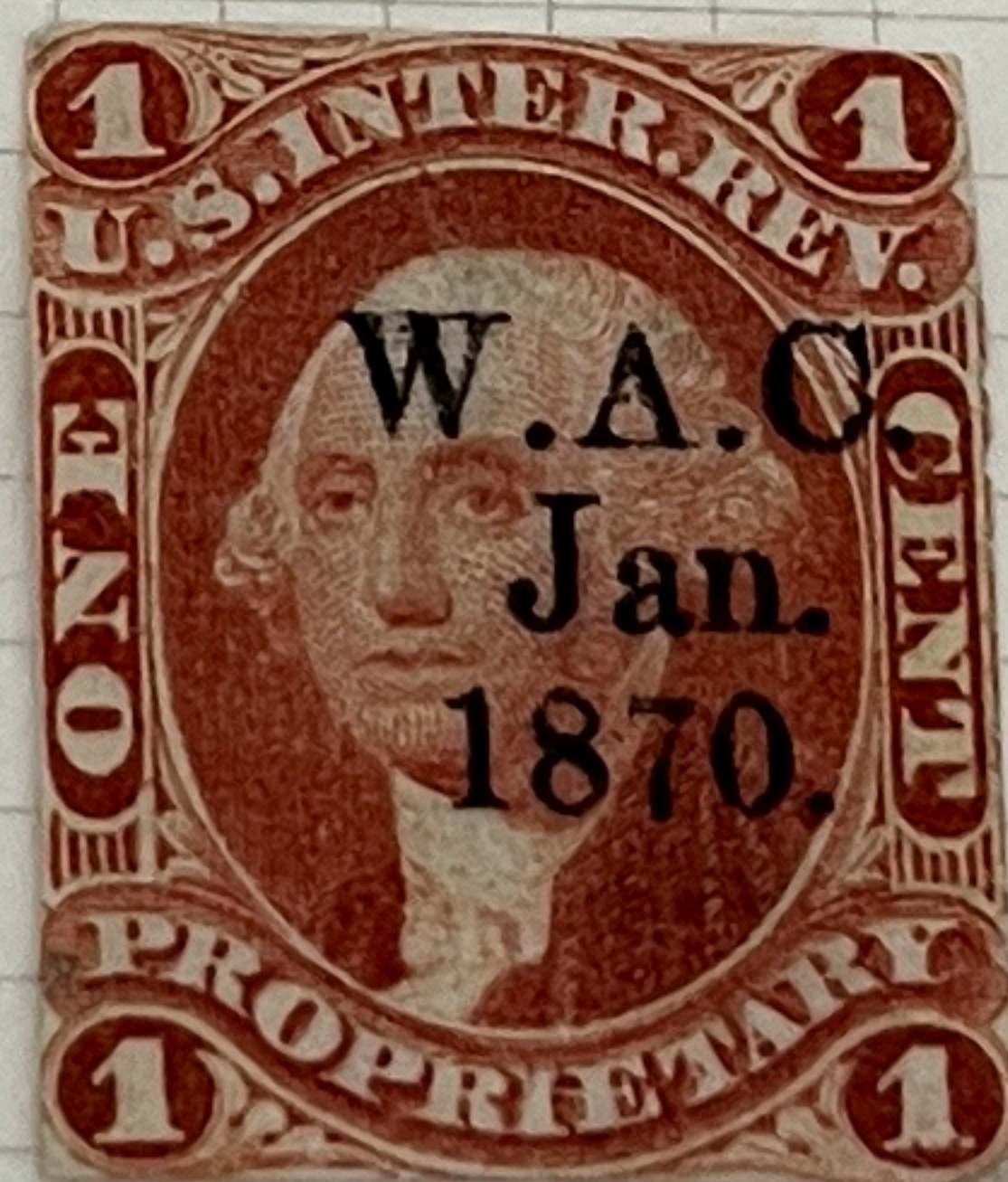
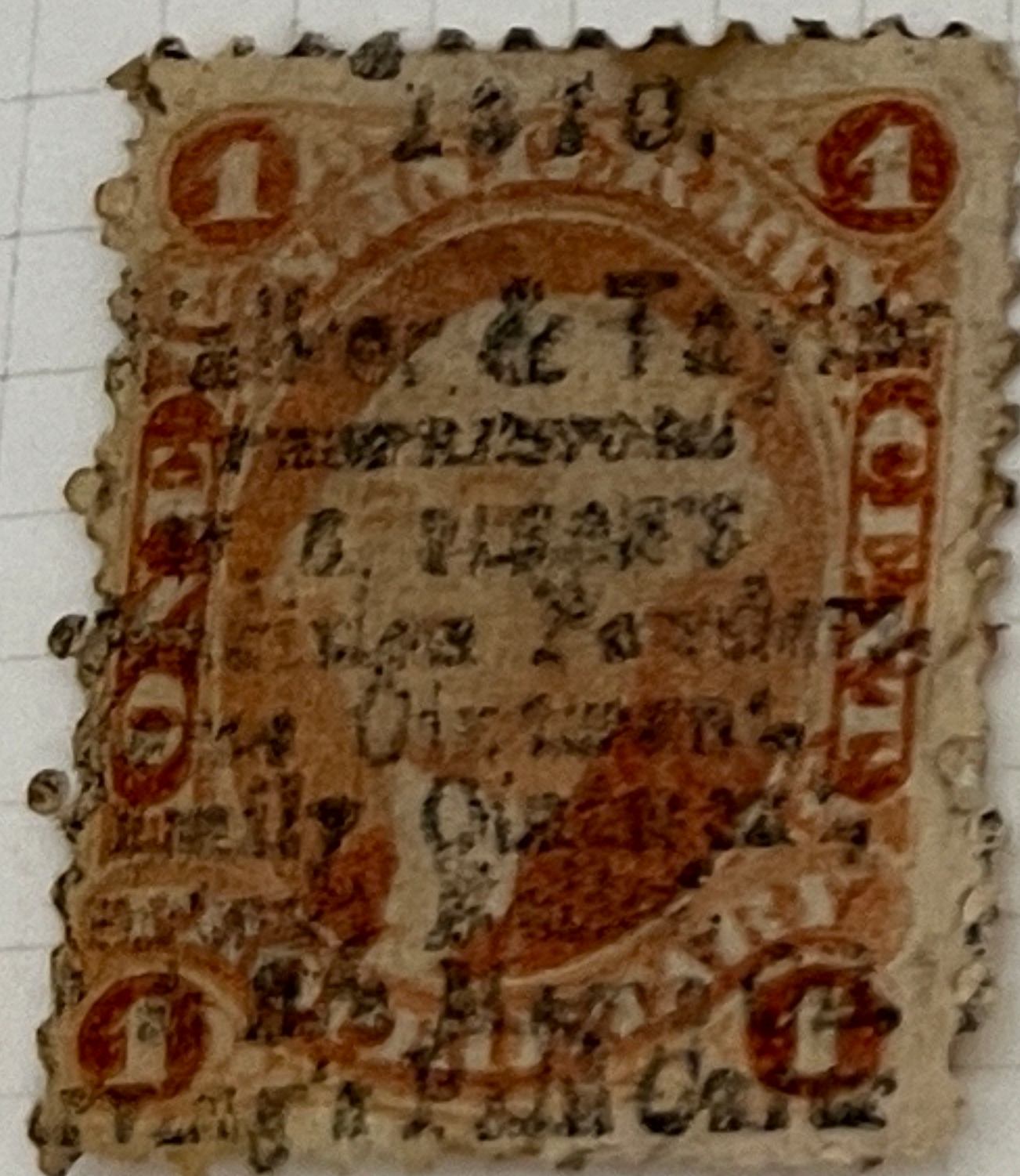
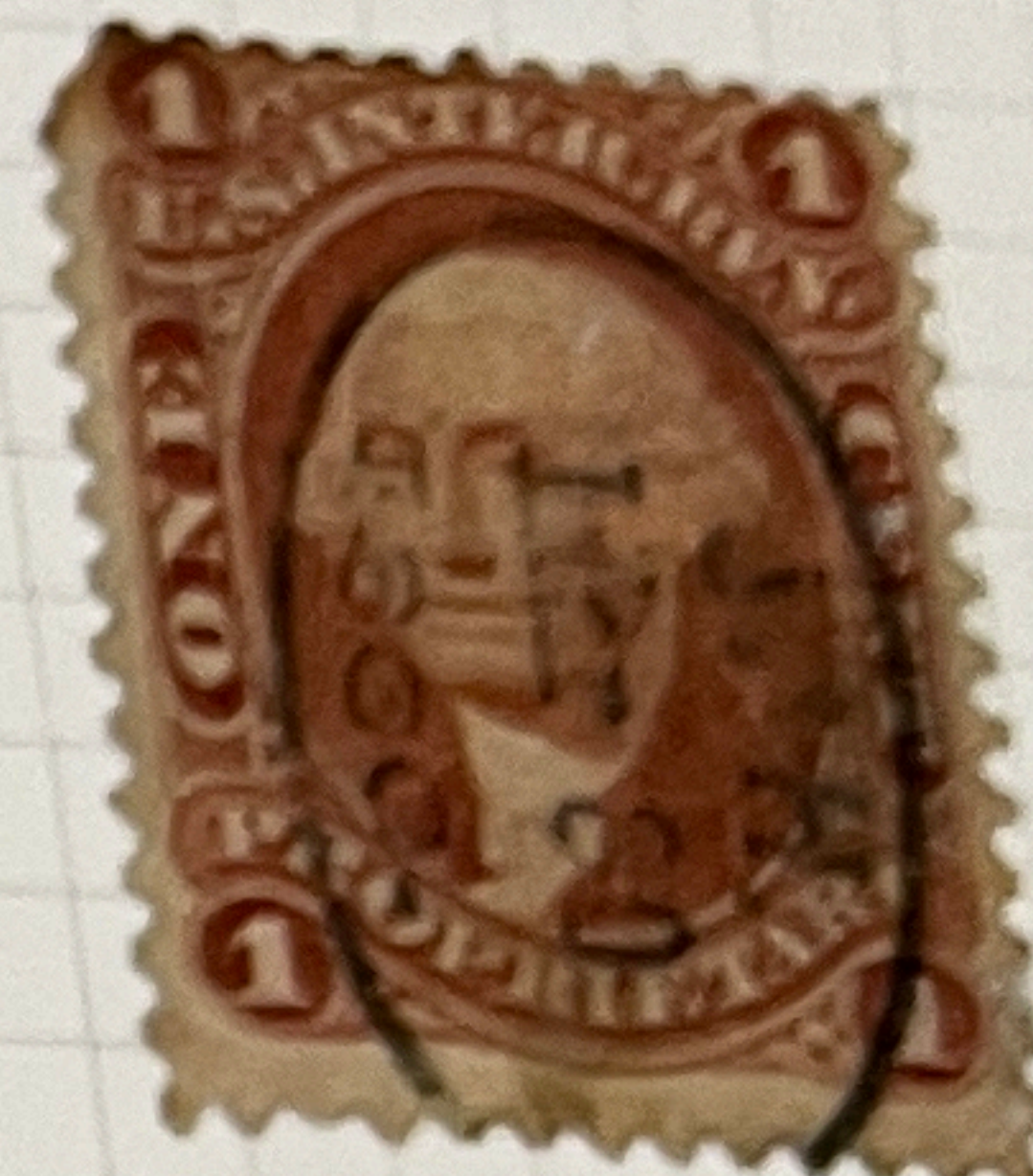
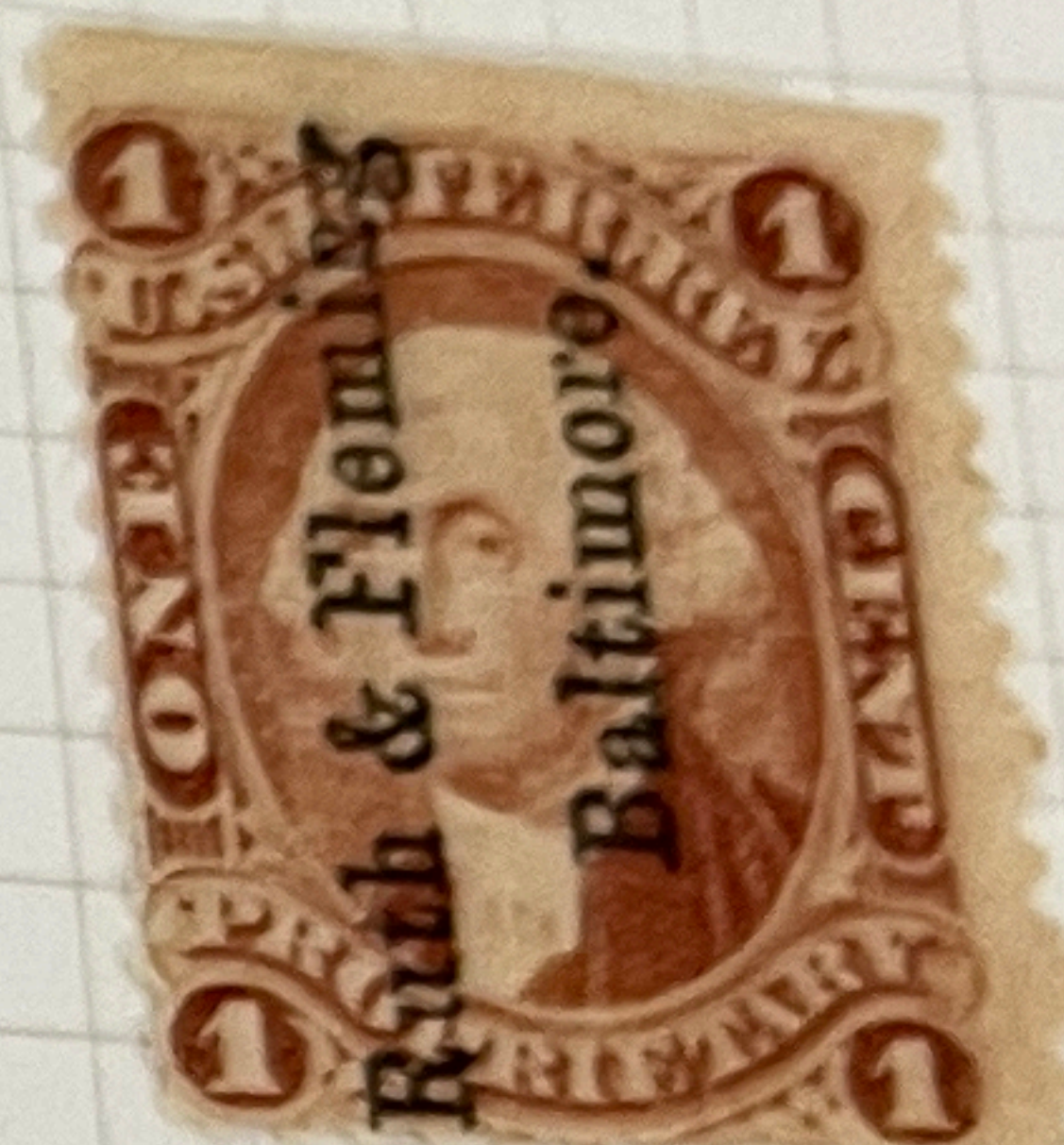
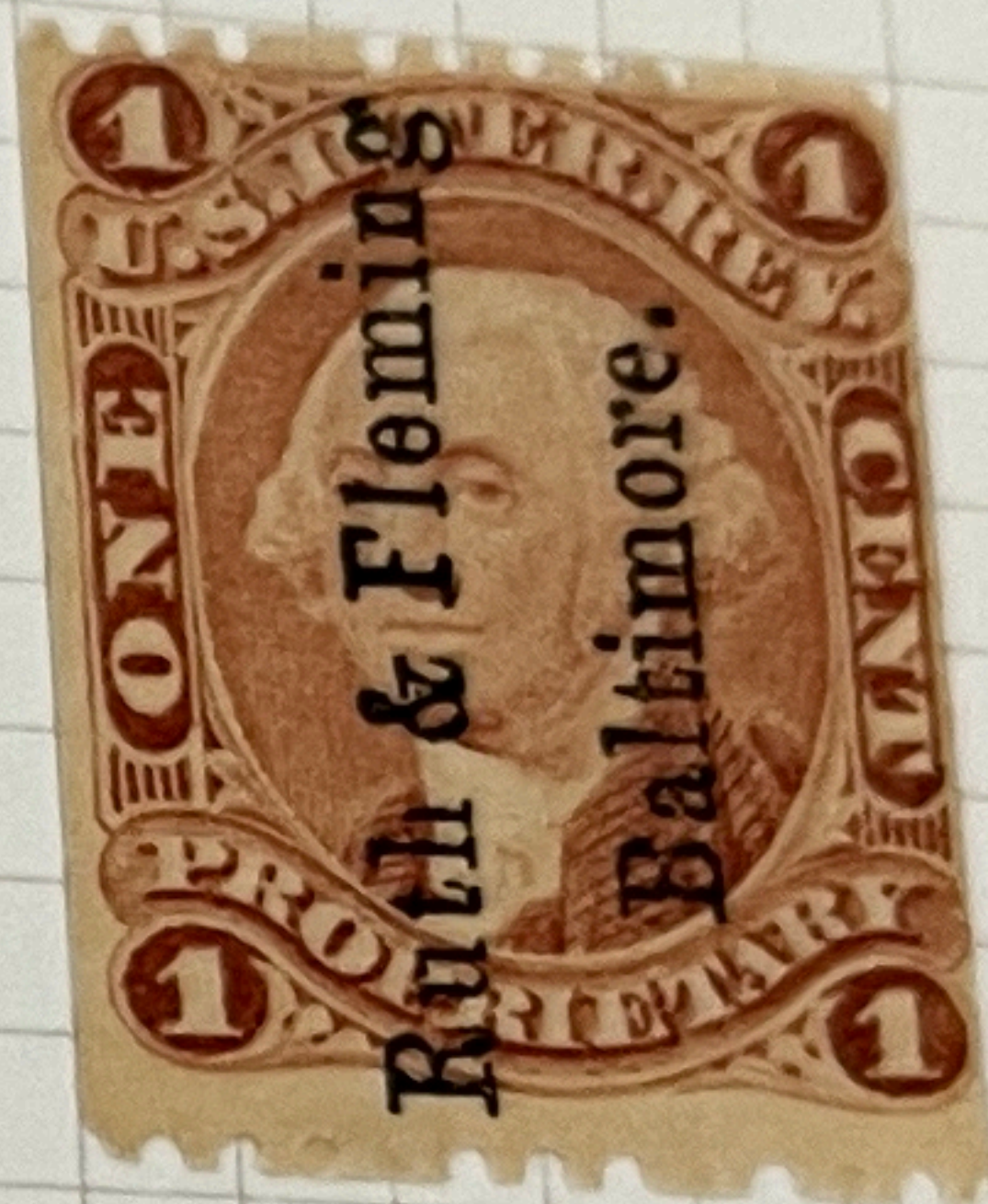
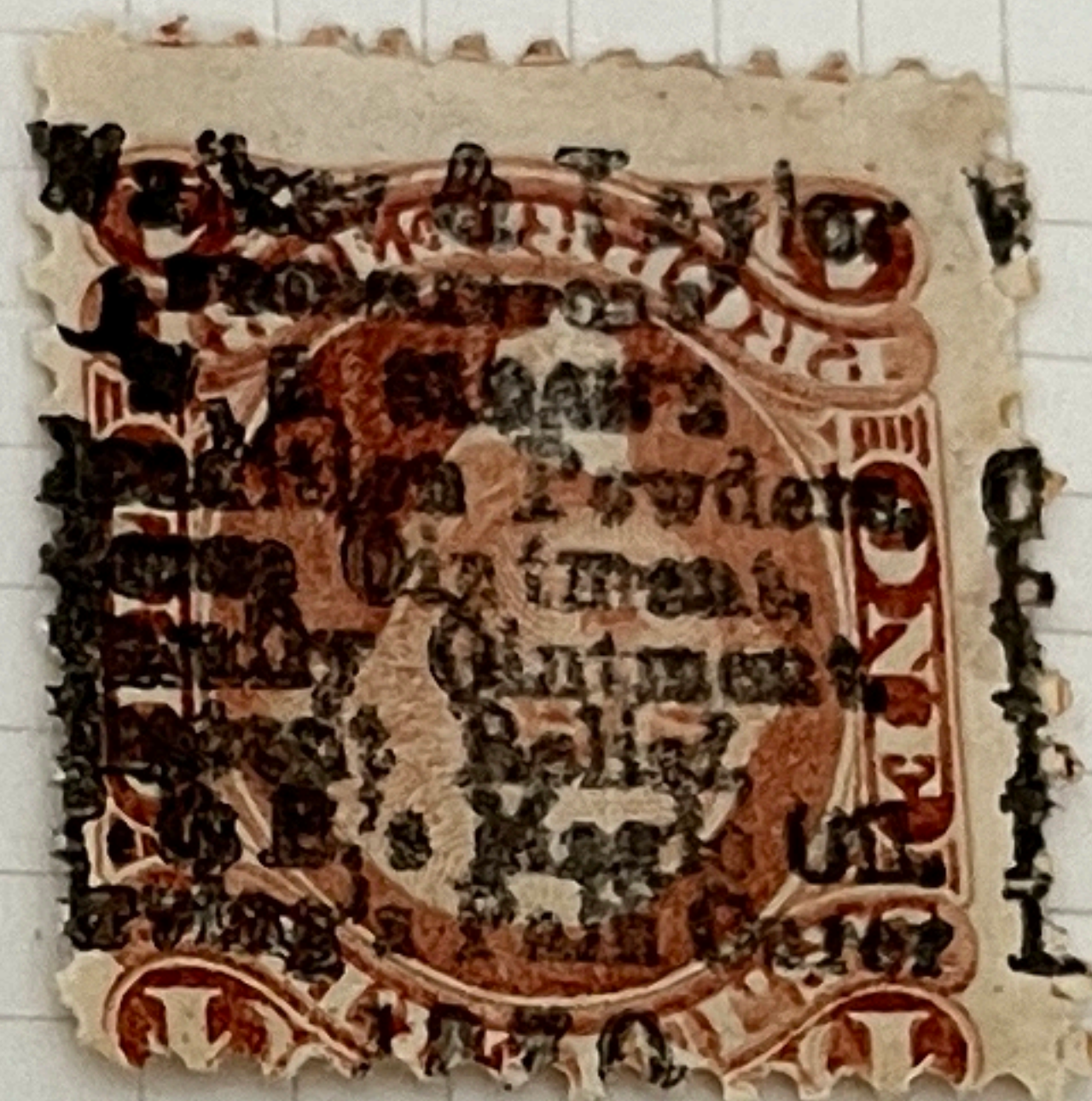
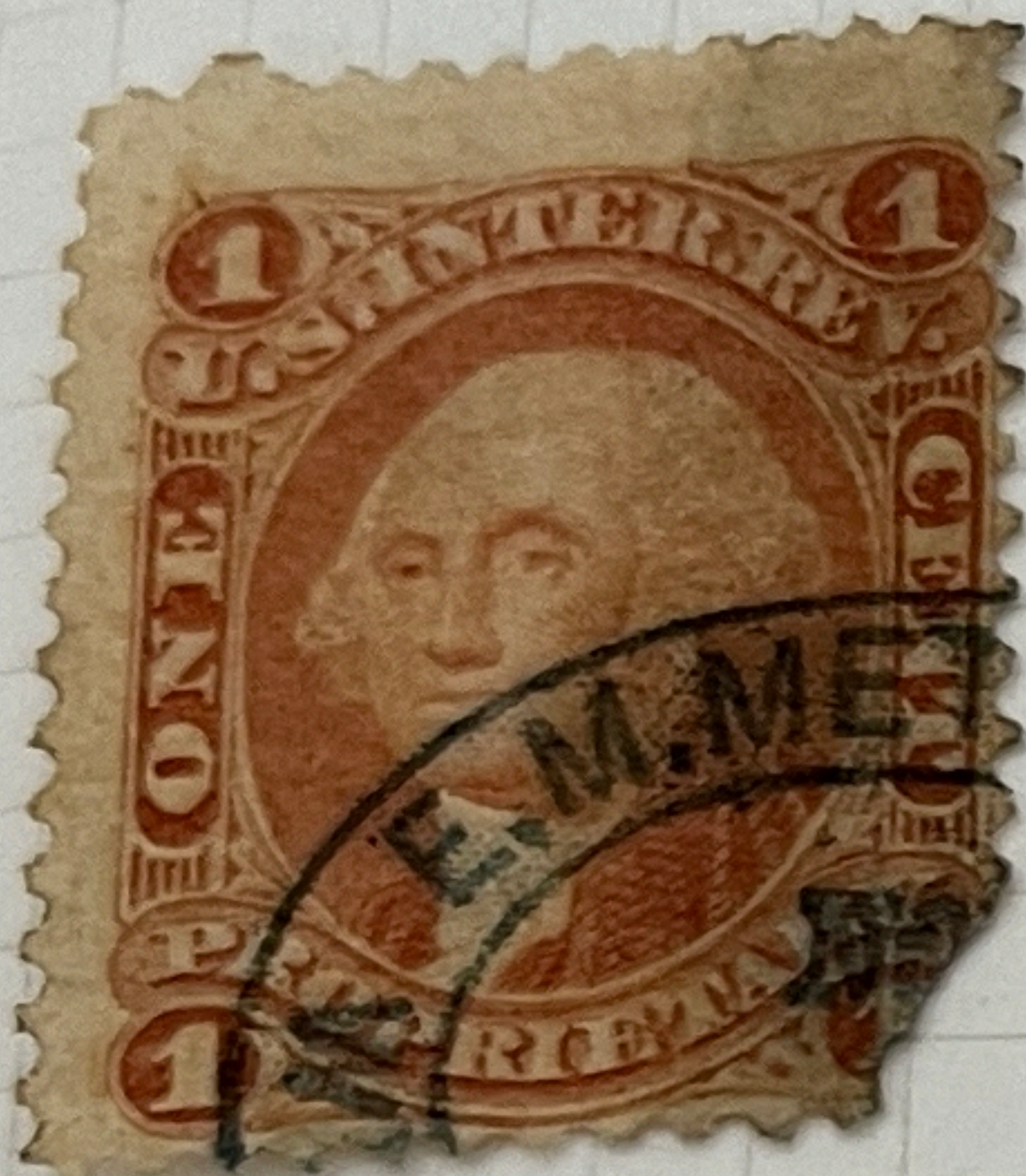
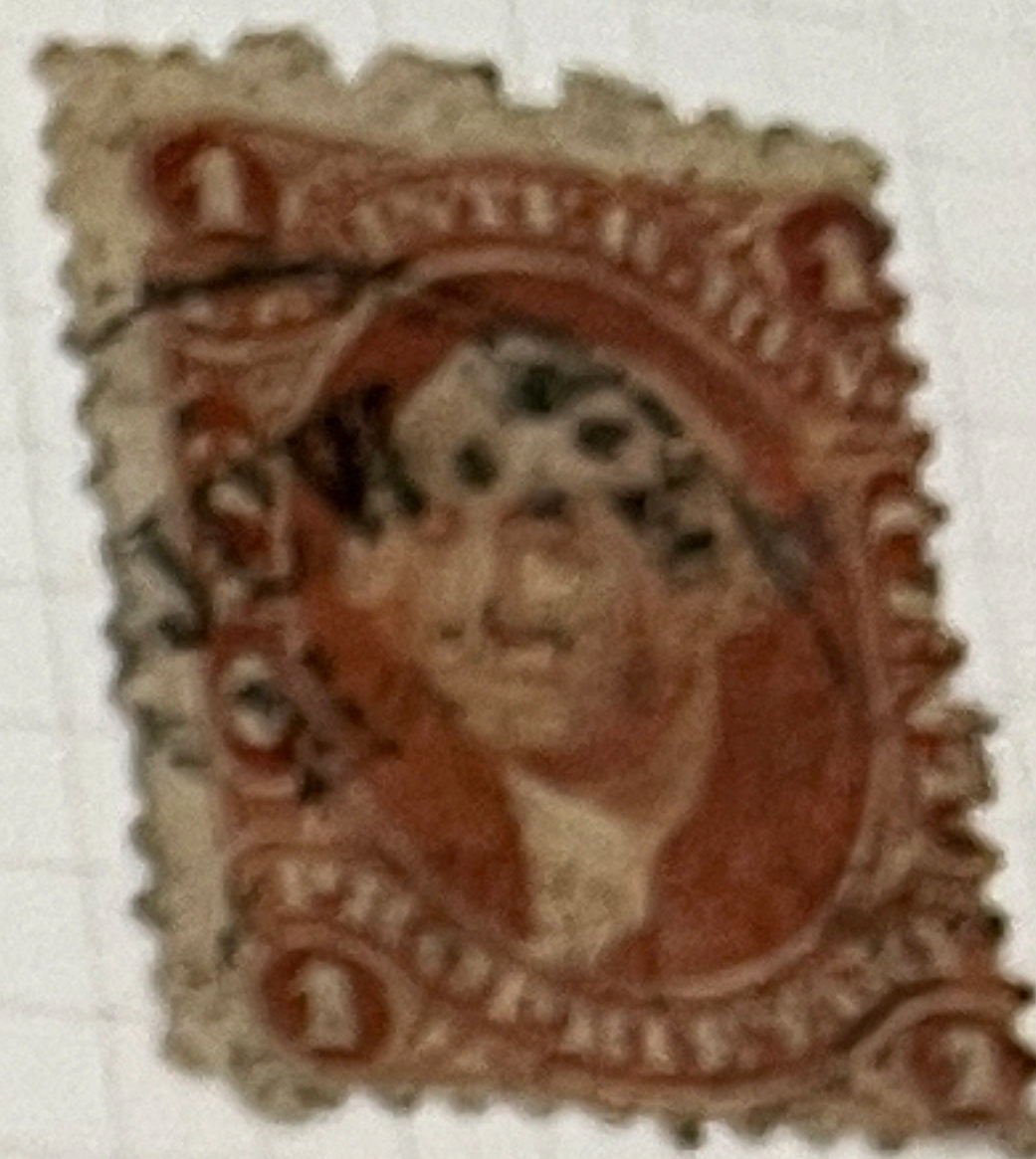
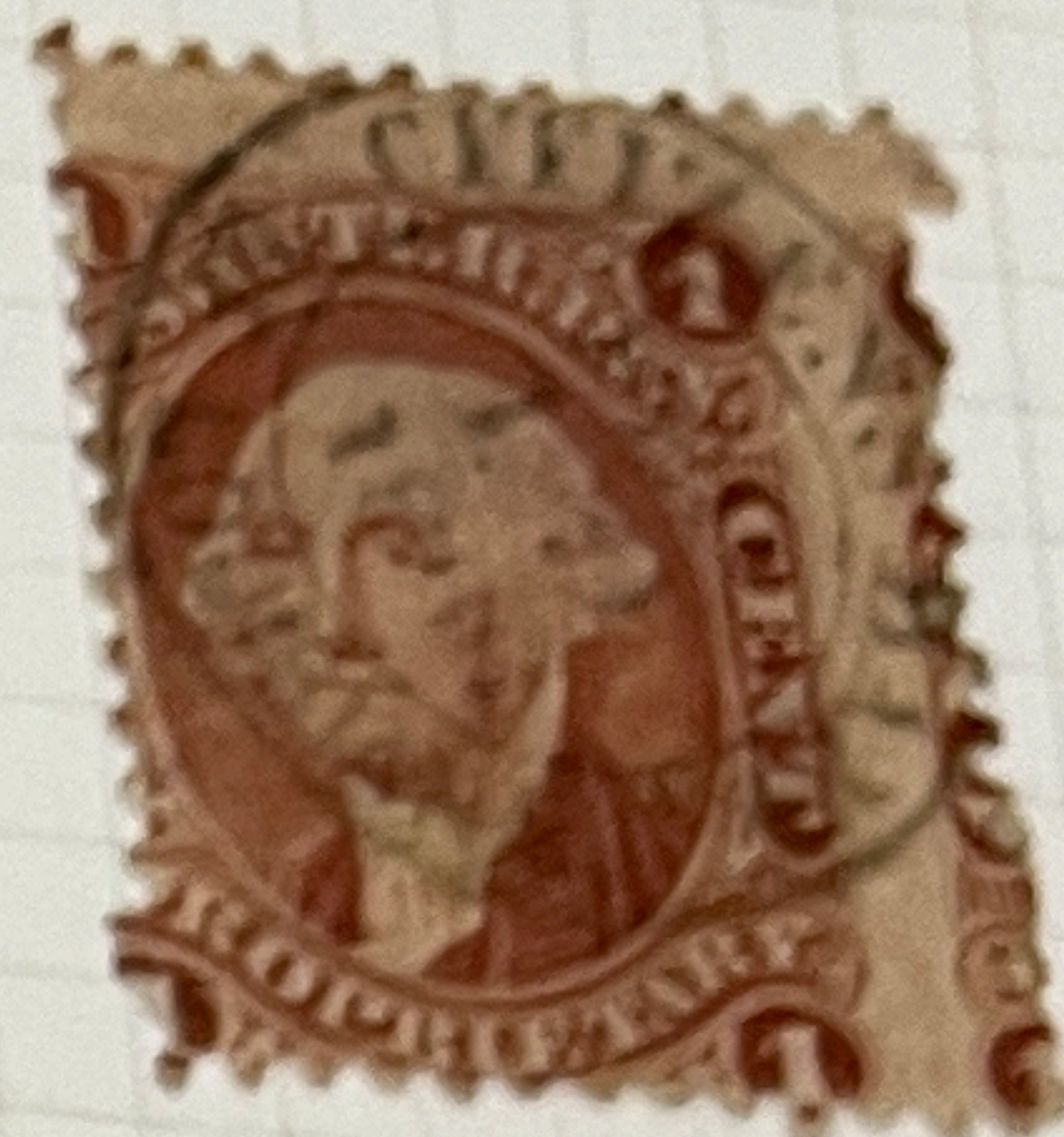


The designs of both these stamps are, as recorded, the same as the similar value in the 2nd series save that the head of Washington appears in the vignette.

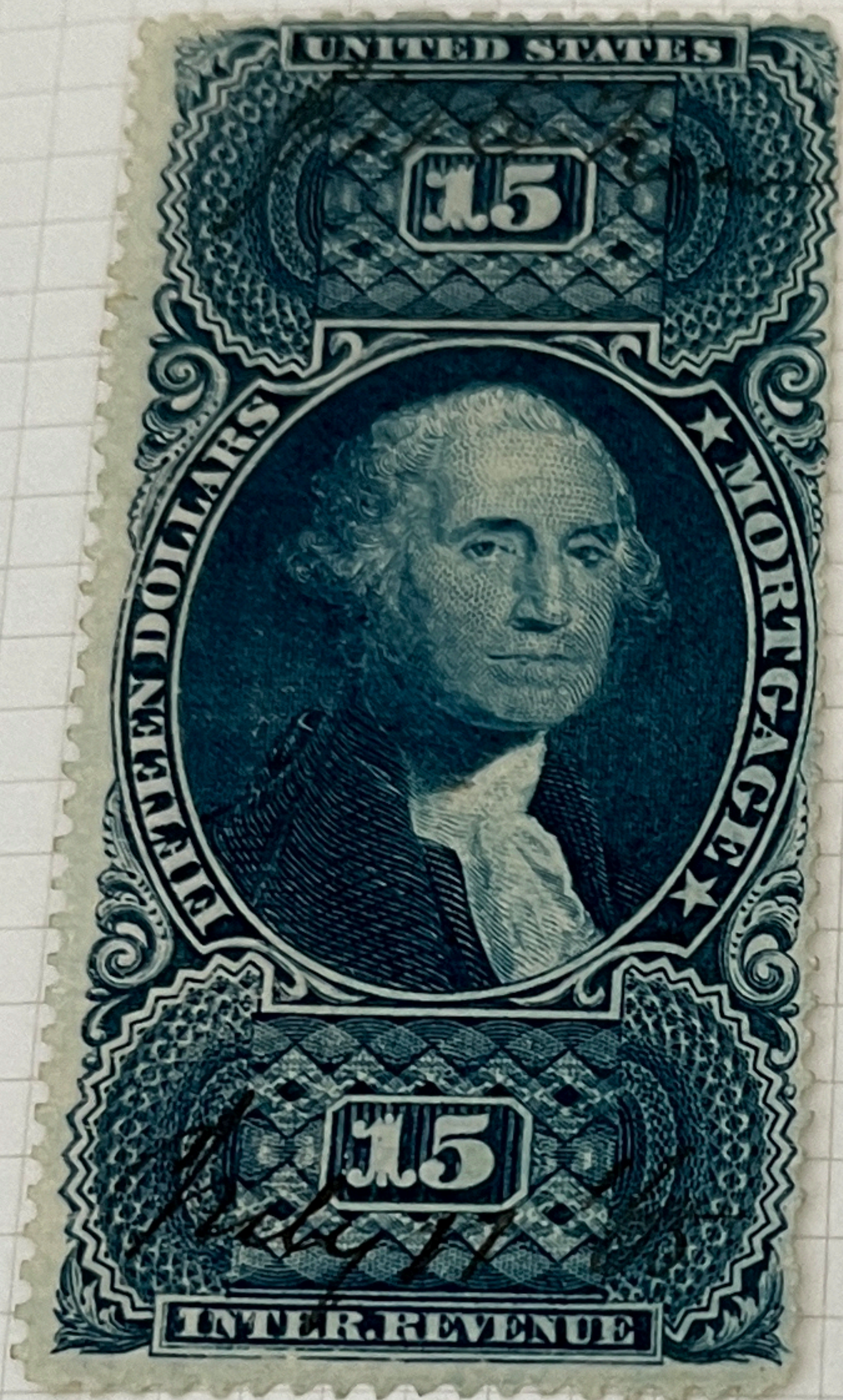
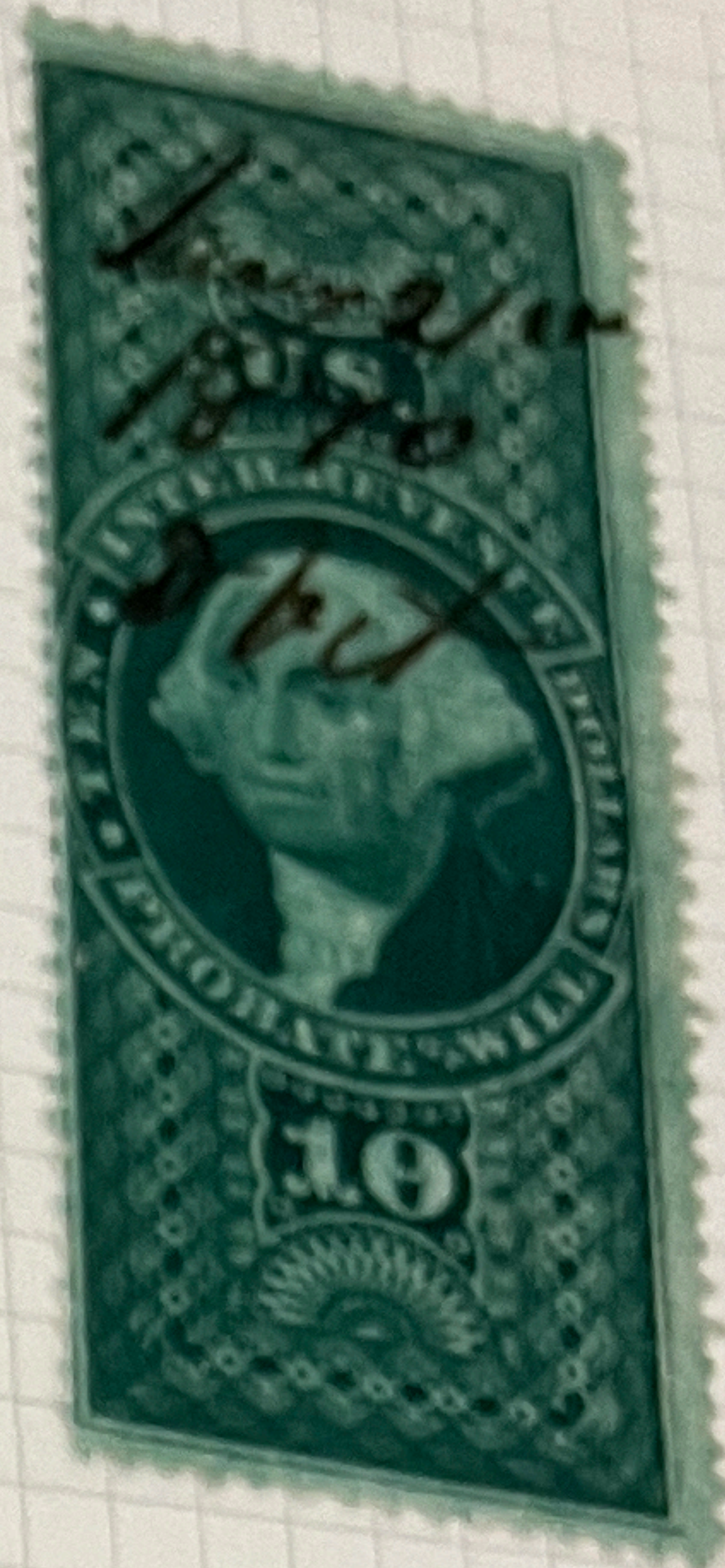
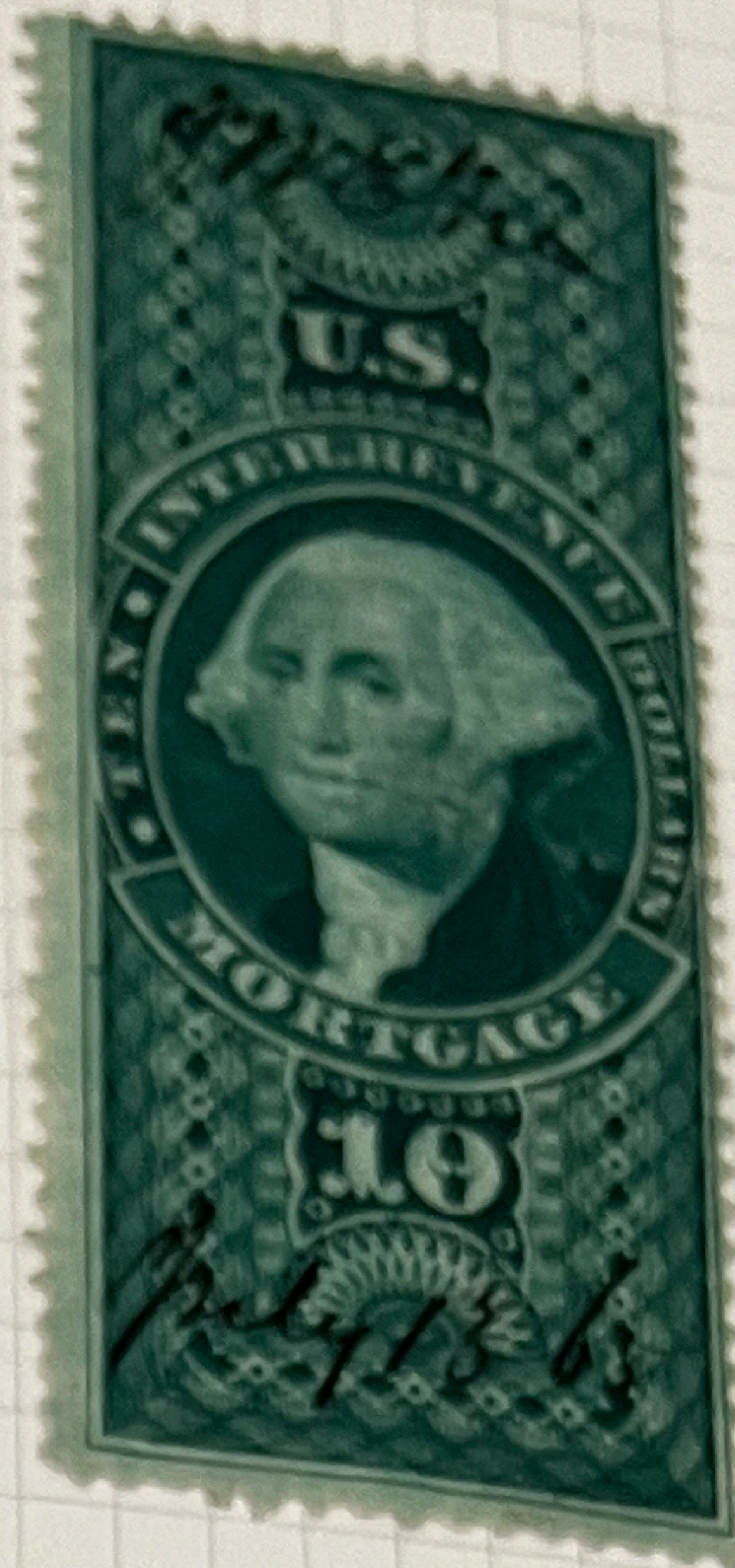
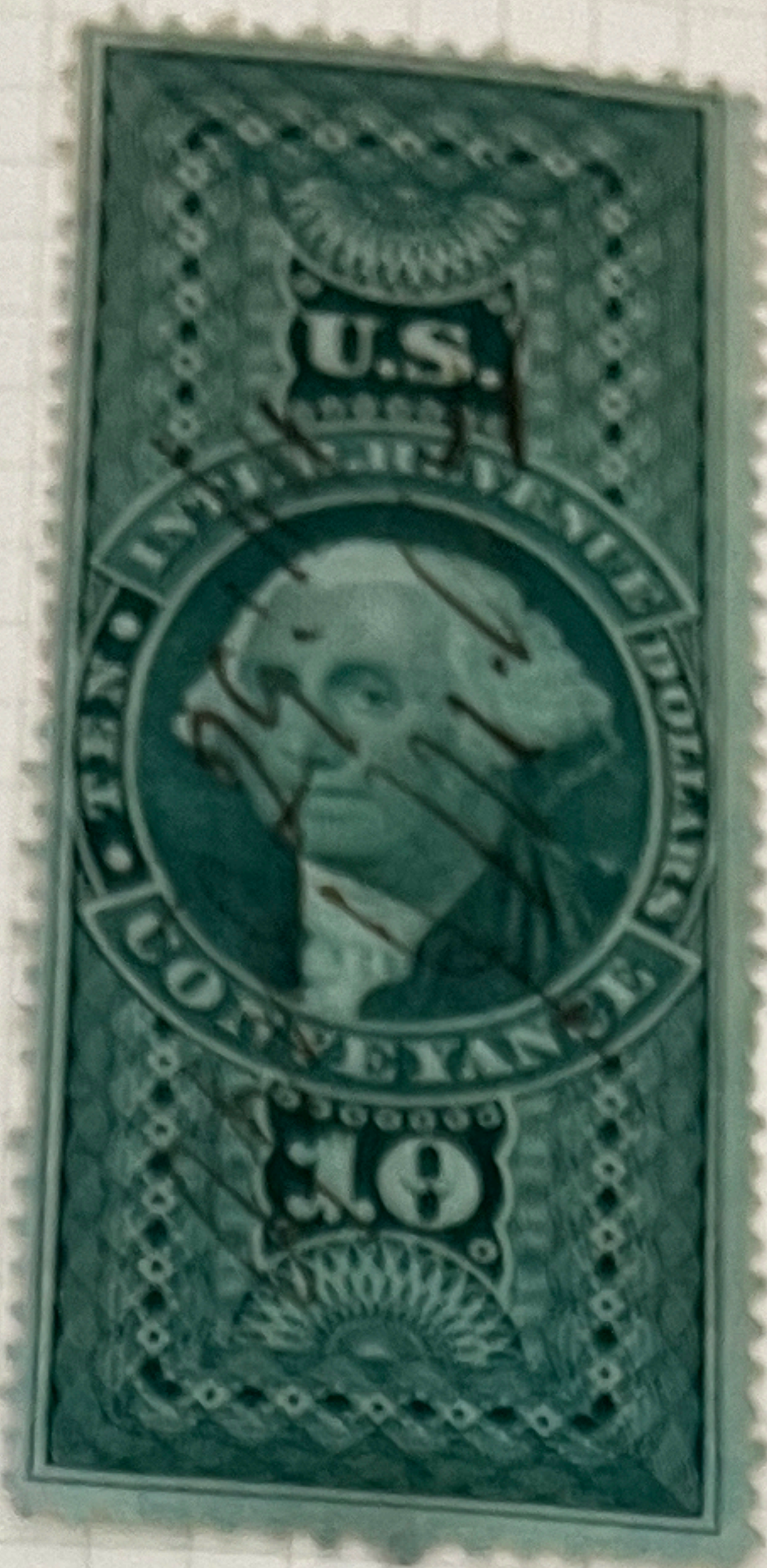
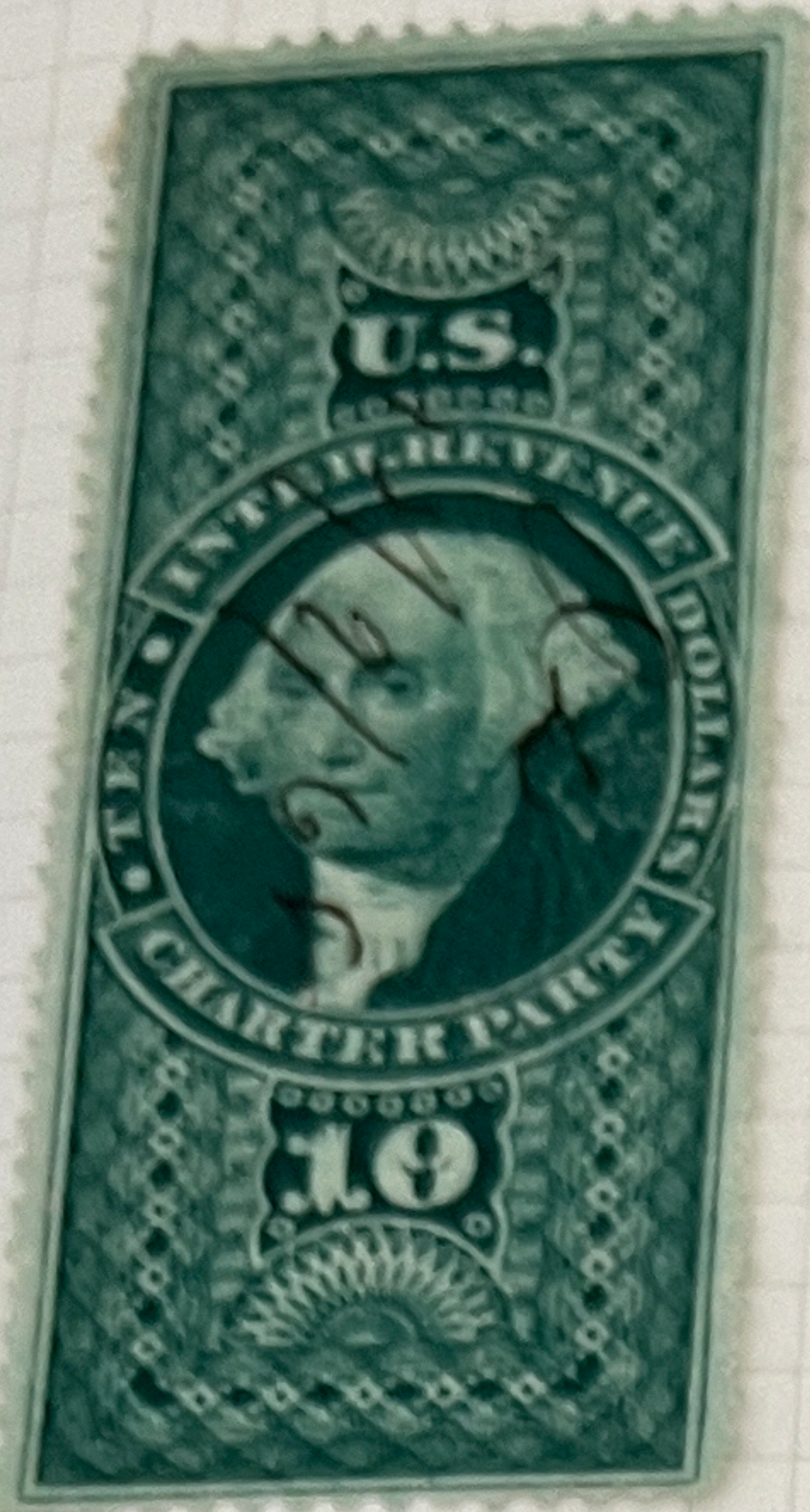
* An Historical Reference list of the Revenue Stamps of the United States. Boston P.S. 1899 - p 28. (any further information welcomed).



PROPRIETARY - PRECANCELED



MADE IN ENGLAND. S.G. LEAF No. 3833 (Faced) : No. 3831 (Unfaced)

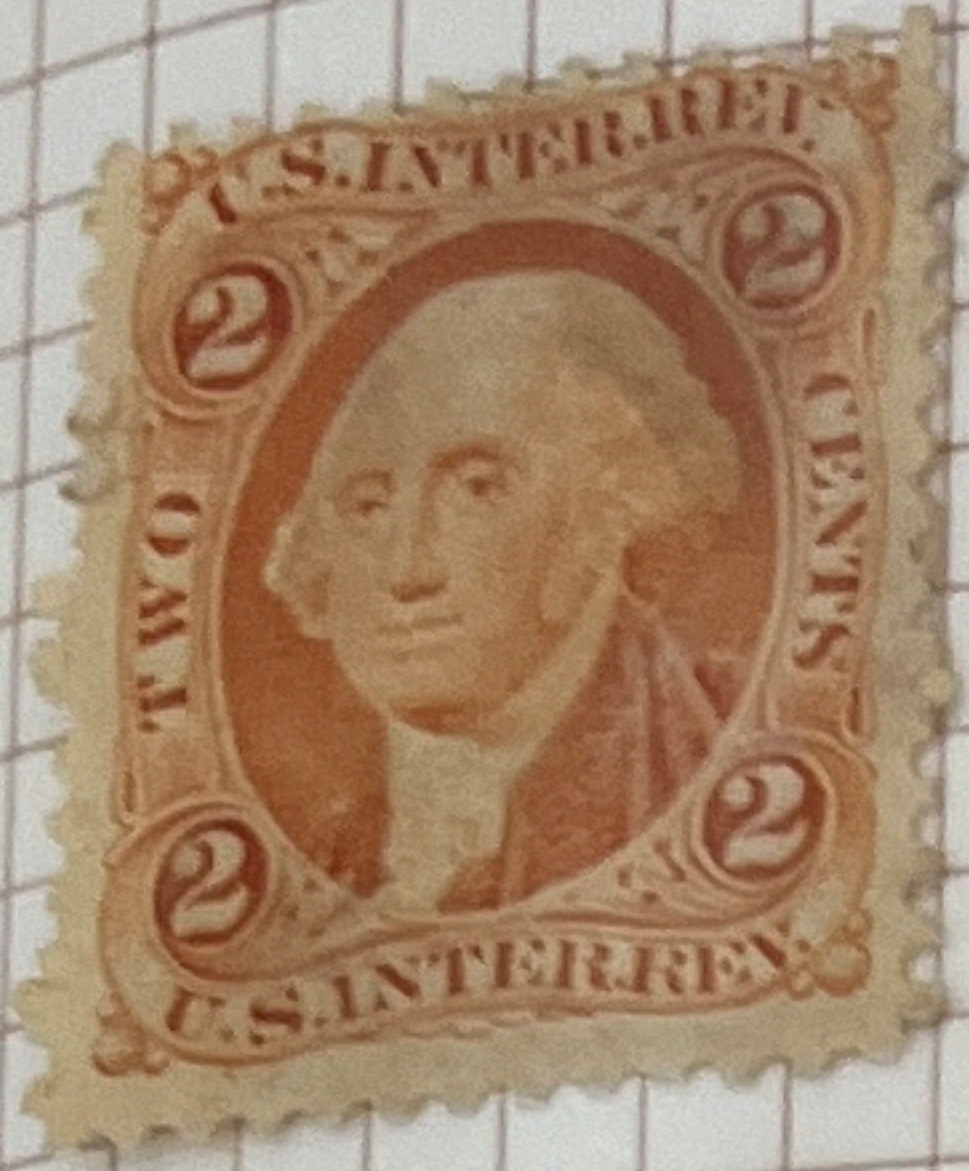


ax Robson howe 2000

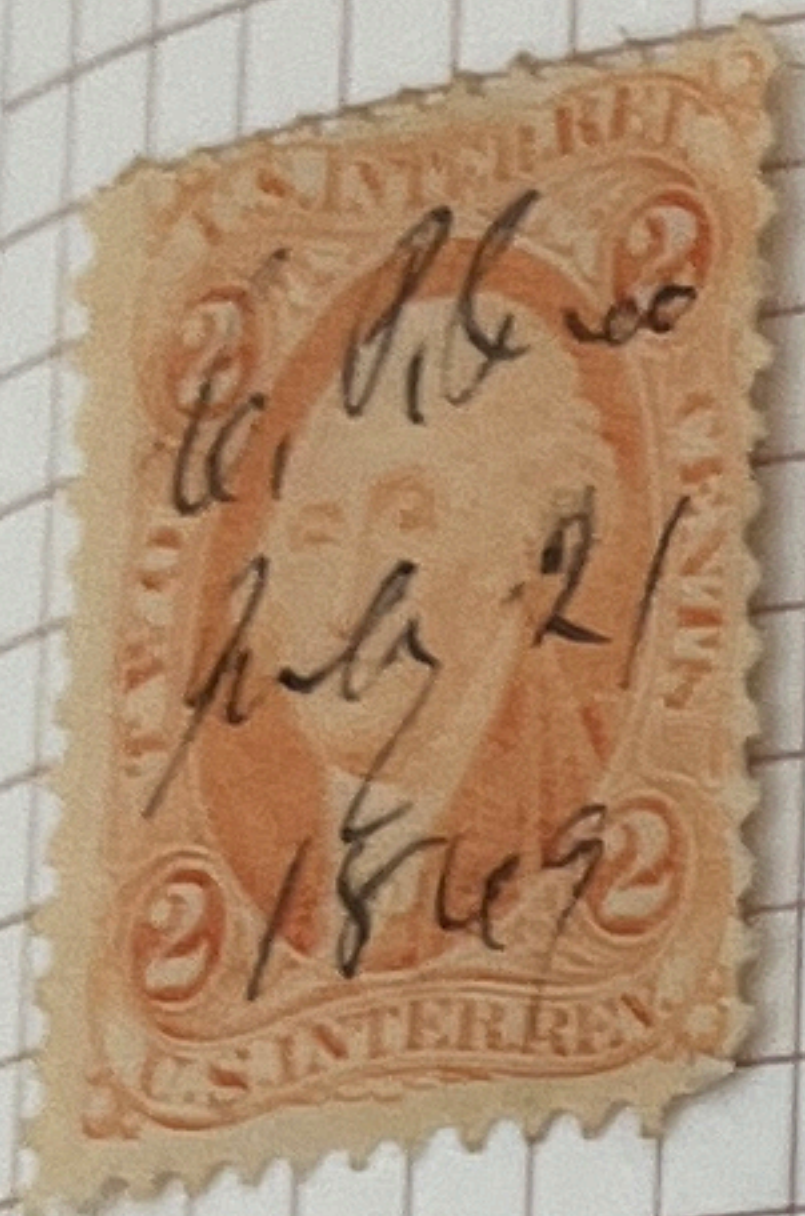
EXETER/PLYMOUTH LEAF No. 3833 (1864); No. 1931 (Lithum)
STANLEY GIBBONS PUBLICATIONS LTD. LONDON
MADE IN ENGLAND

UNITED STATES INLAND REVENUE, after 25 December 1862 all stamps could be used indiscriminately (except for taxes on proprietary items).

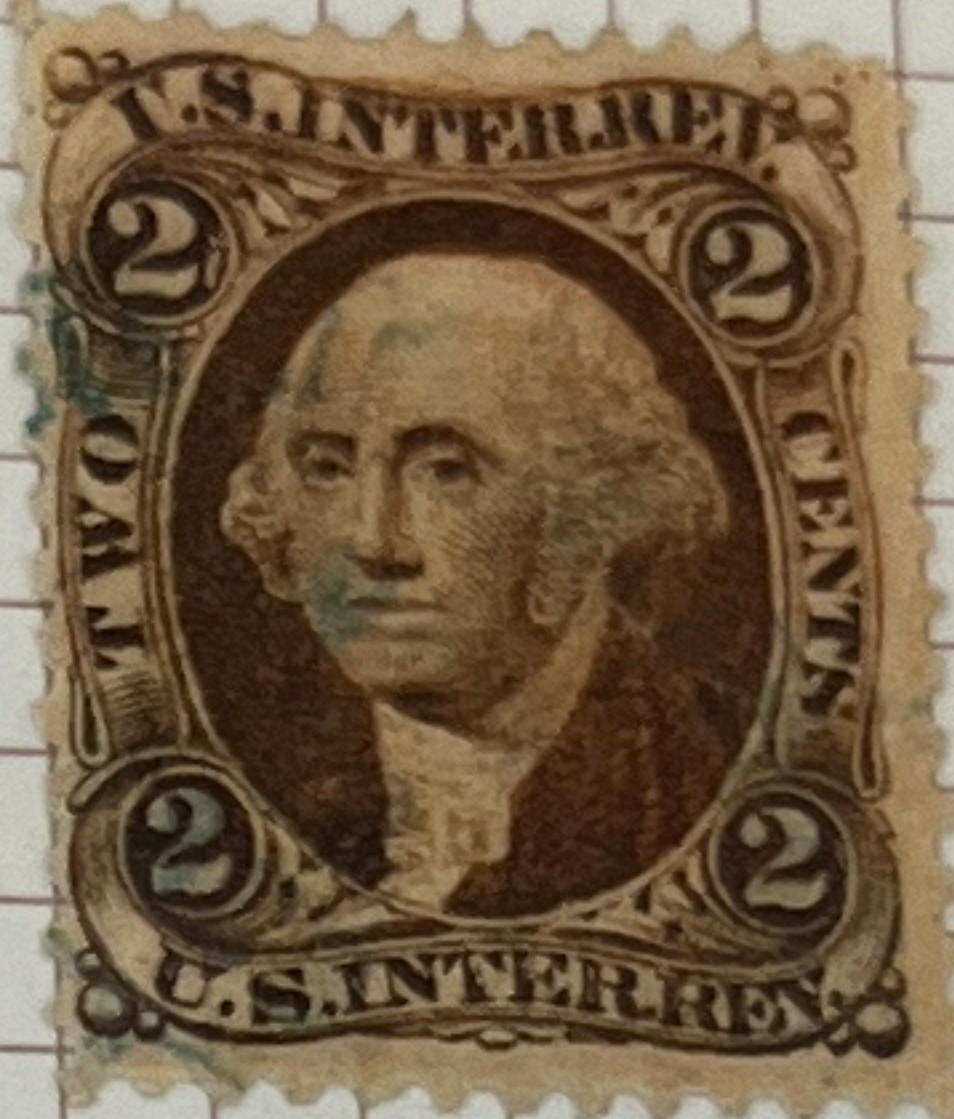
First printed Oct 1864, total issued 456,724,925 - 4 shades



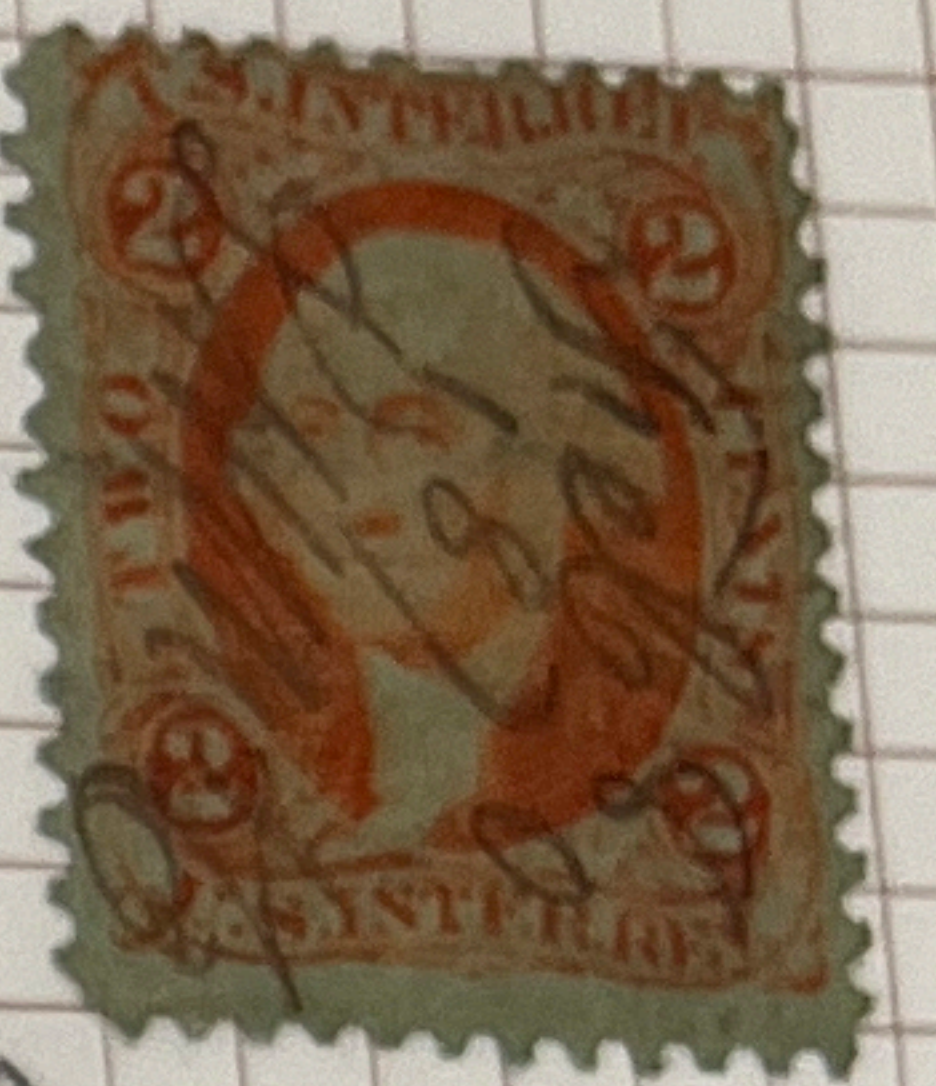
chemicals?



to have legal effect, earlier documents required stamping



known to exist on experimental green paper, usually dated '66

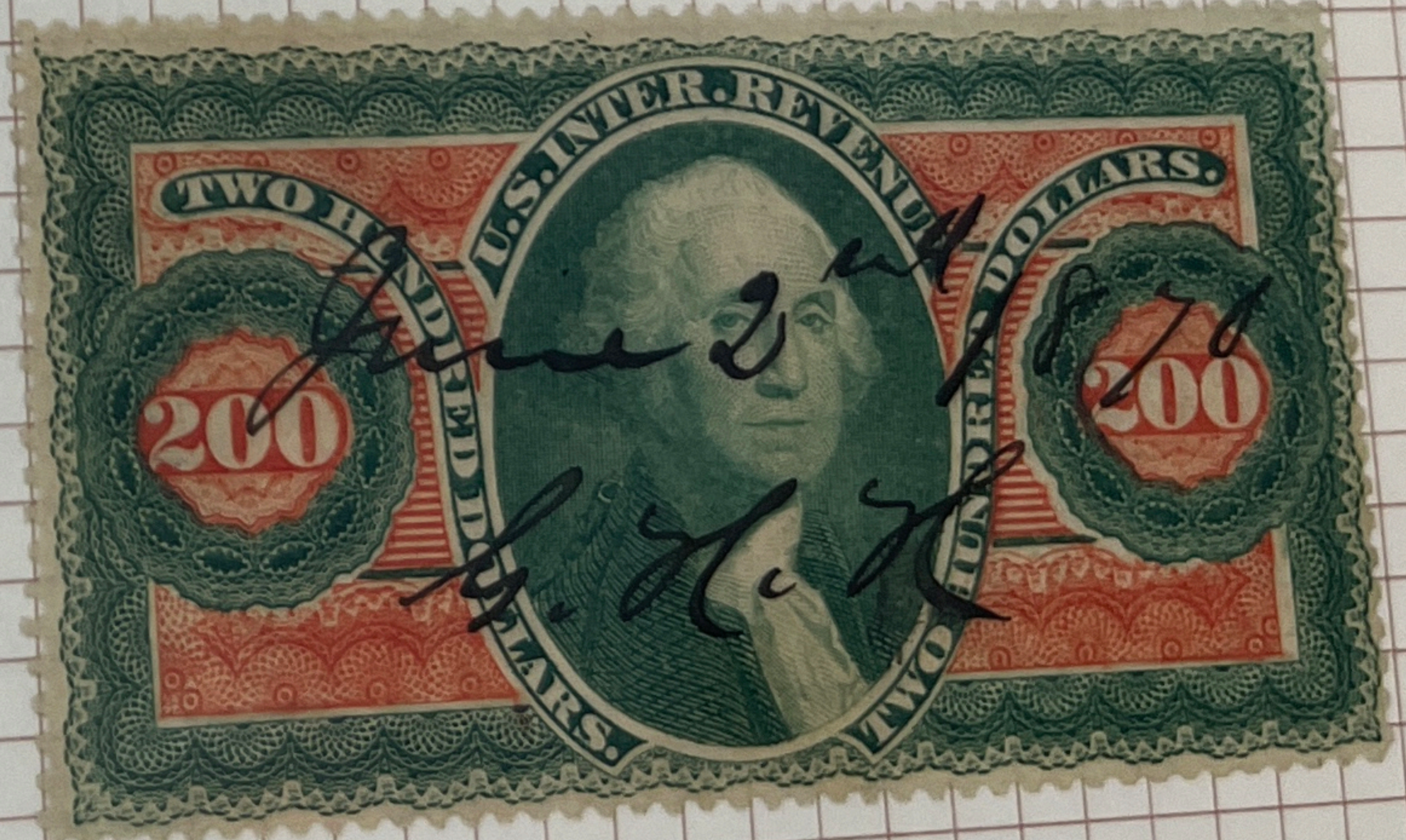
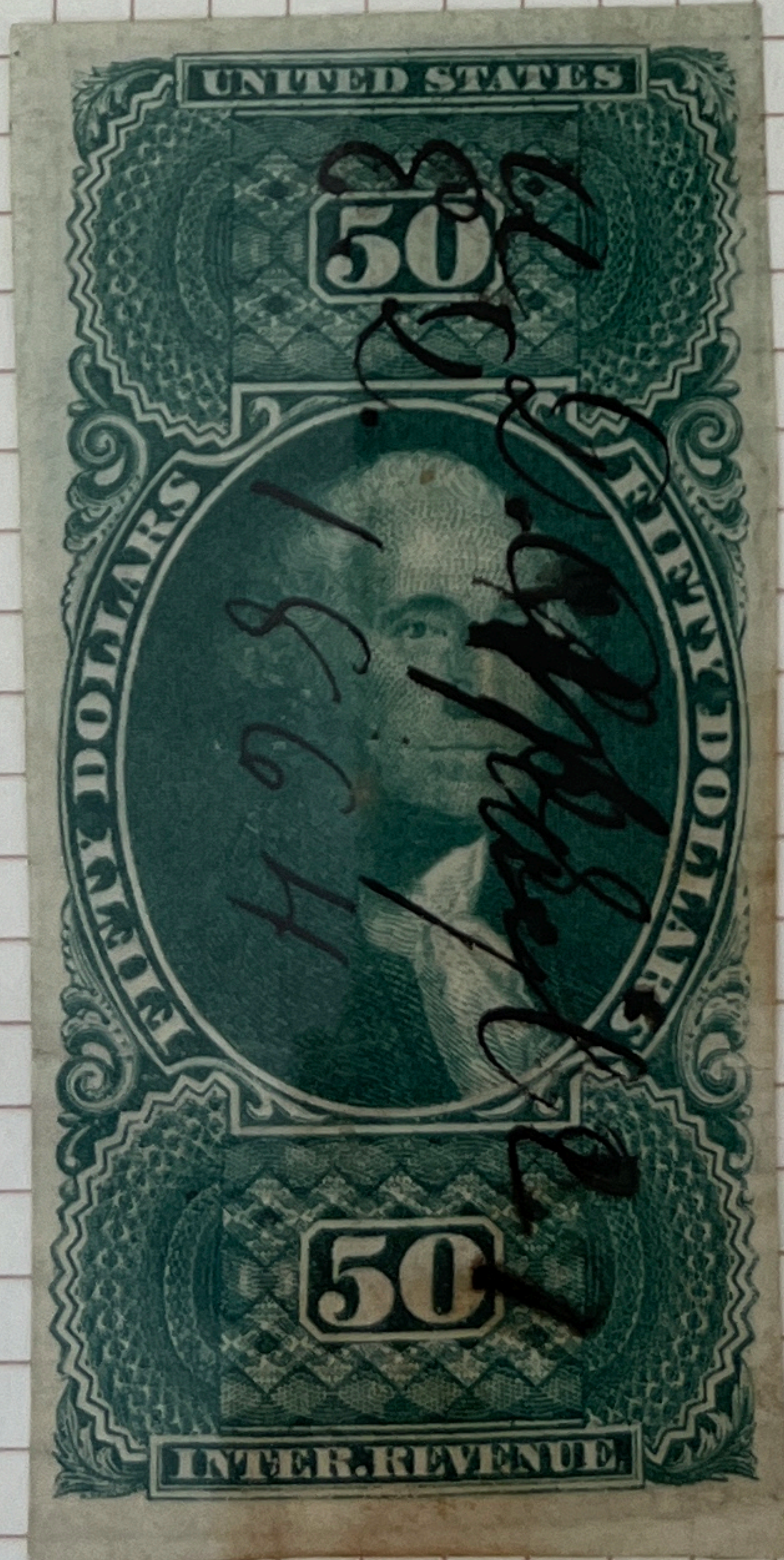


Rise \$2250-



First printed May 1863
Total issued 24,946, 4 shades

First printed July 1864
Total issued 6,556, 2 shades



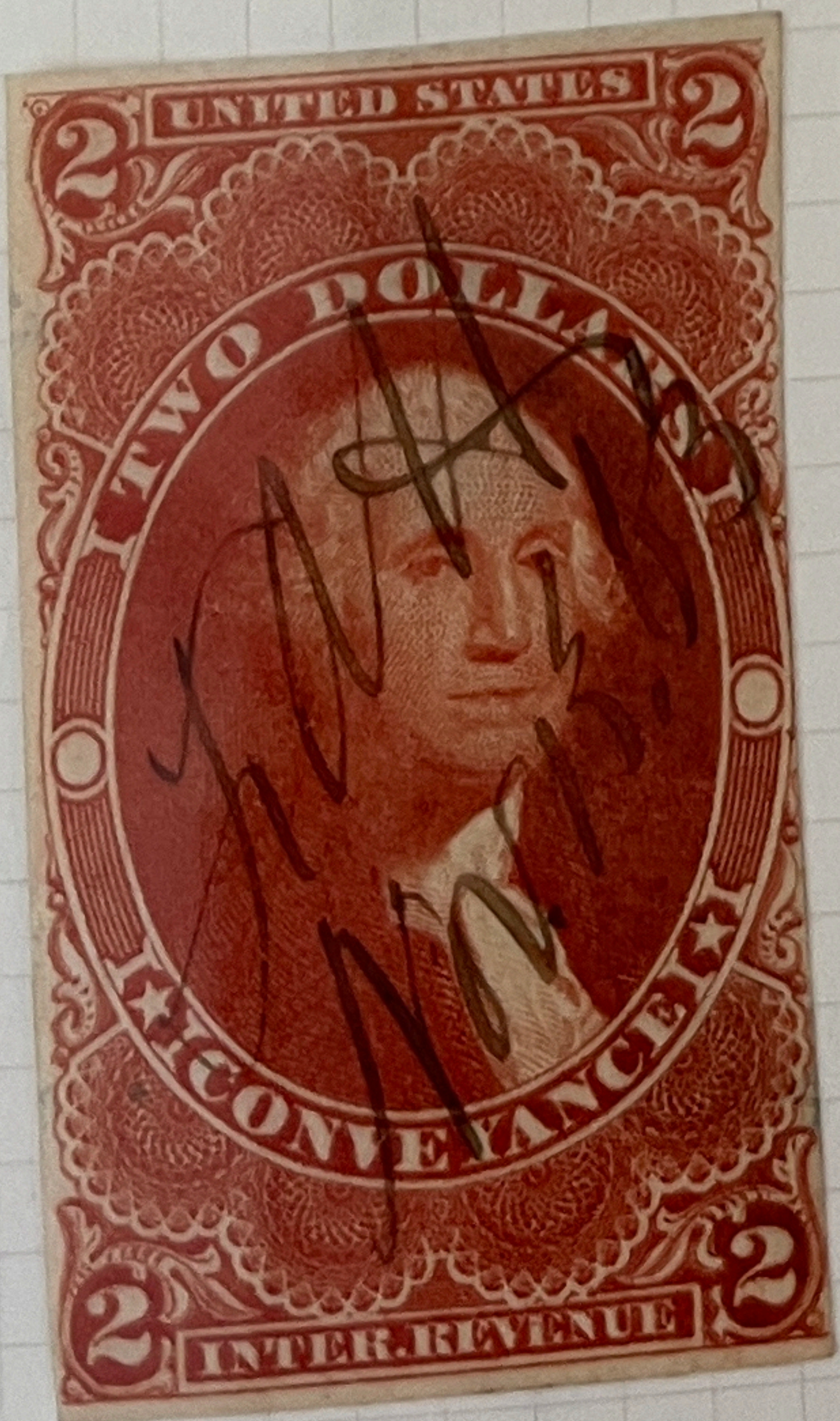
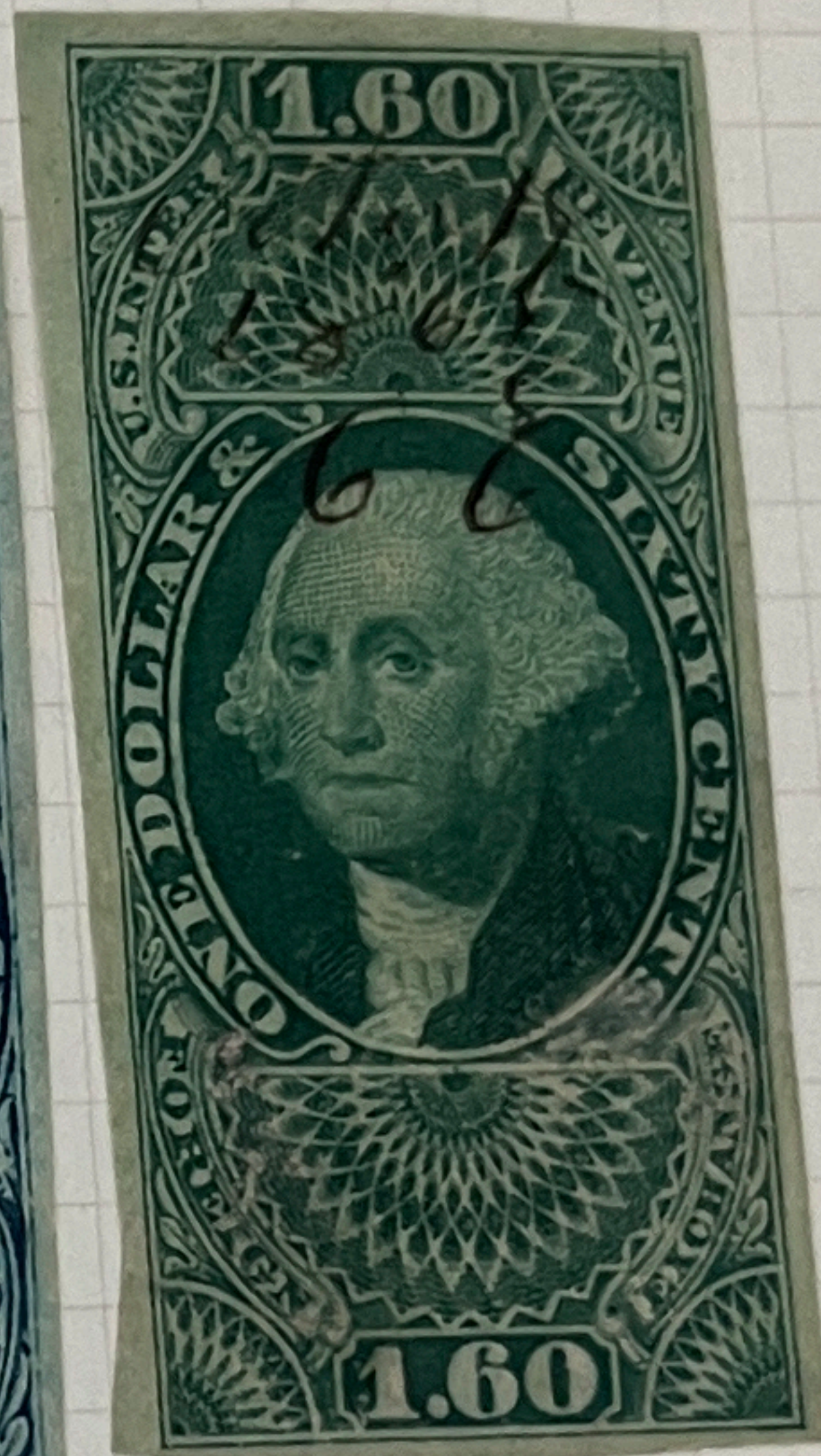
R102C

R101C

superf quantities

unknown

R101a



Beer tax \$1 per barrel

1870



REA 16 violet security lines



REA 16a yellow security lines



REA 17 if yellow lines then a ord

Beer tax \$1 per barrel
 Bacchus serves the first fermented brew to Man
 Green silk paper, plate letters & position numbers
 [1990 census quantities]

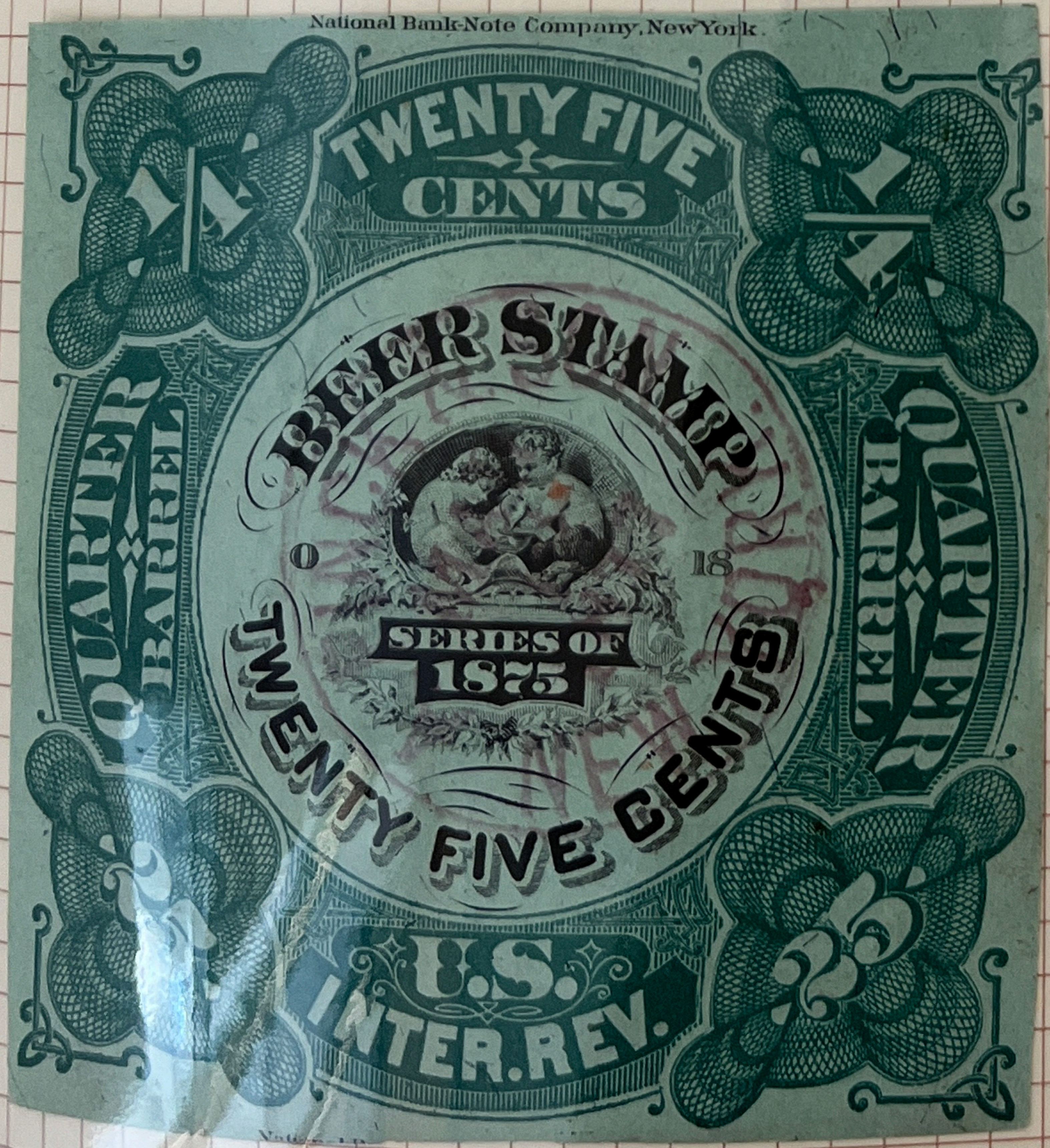
1875



REA 30 [583]



REA 31 [249]



REA 32 [867]

Benton



REA 39c shades work, plate letter & position number

