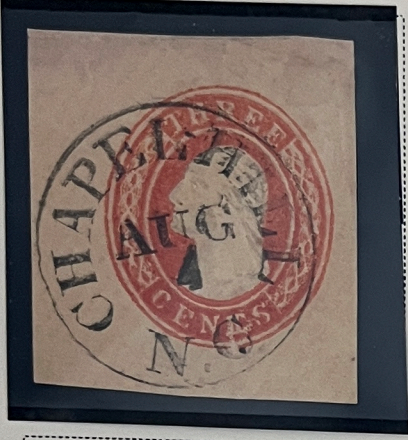
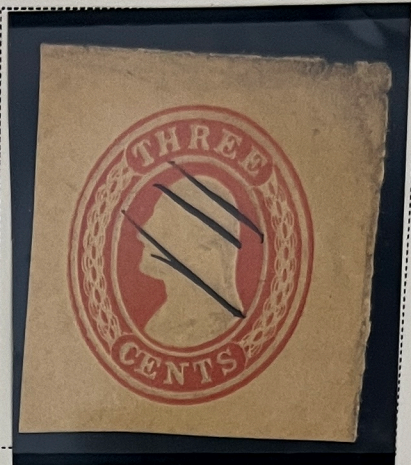
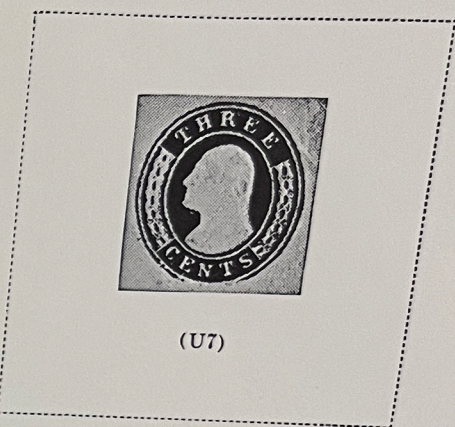


ENVELOPES

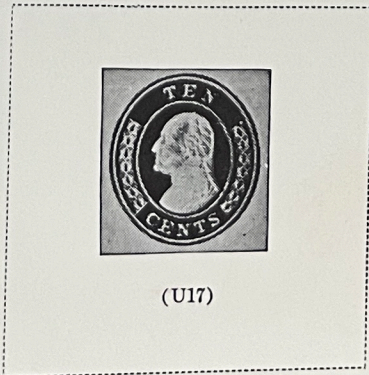
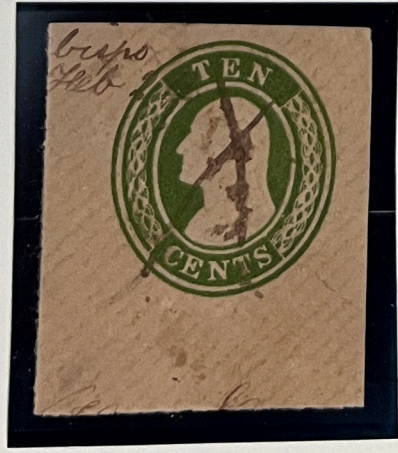
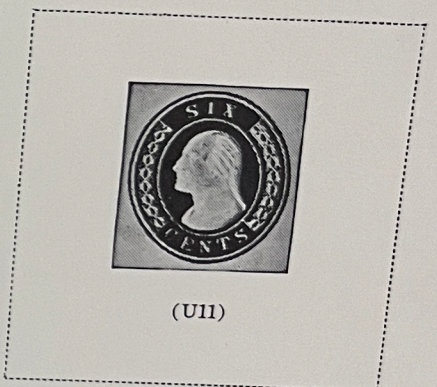
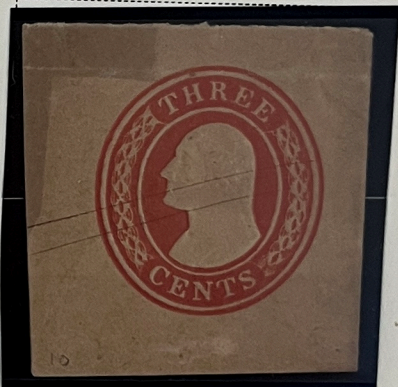
1853-55



Die 3
3 C
RED
ON BUFF
(U6)



Die 4
3 C
RED
ON BUFF
(U8)



Die 2
10 C
GREEN
ON BUFF
(U18)

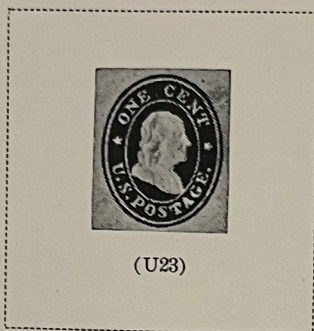
ENVELOPES

1860-61

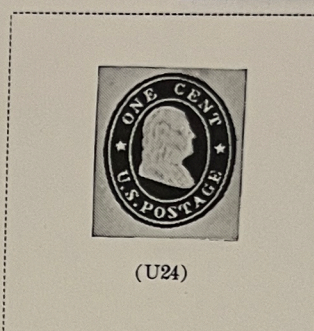


1 C
BLUE
ON ORANGE

(W22)



(U23)



(U24)

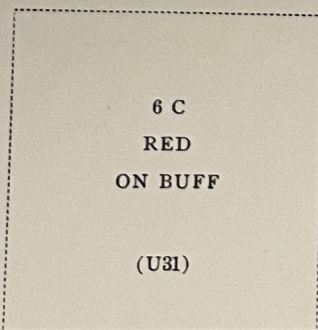
1 C
BLUE
ON MANILA

(W25)



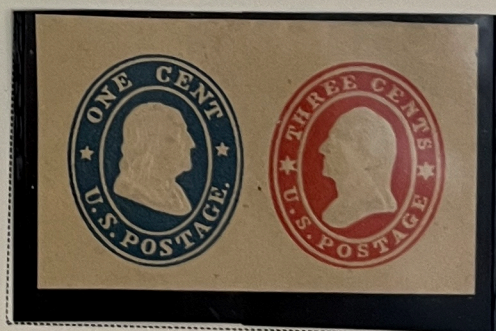
6 C
RED
ON WHITE

(U30)



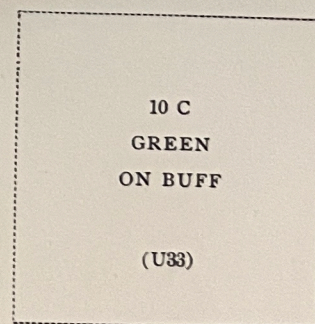
6 C
RED
ON BUFF

(U31)



10 C
GREEN
ON WHITE

(U32)

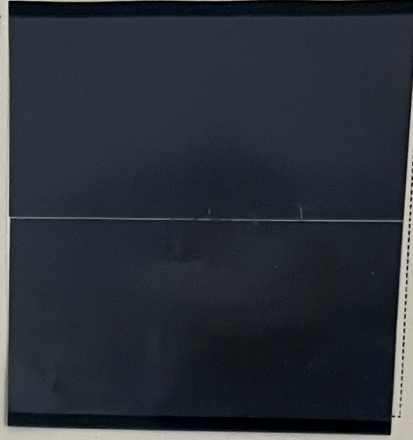
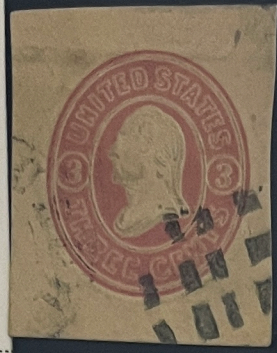
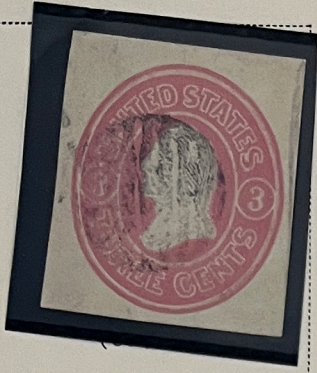


10 C
GREEN
ON BUFF

(U33)

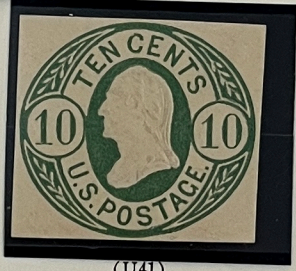
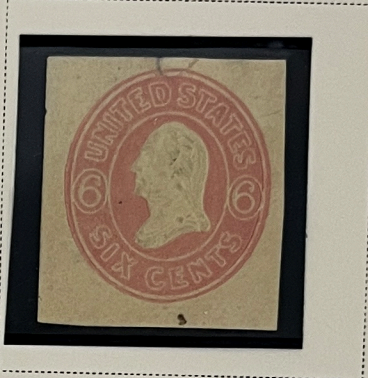
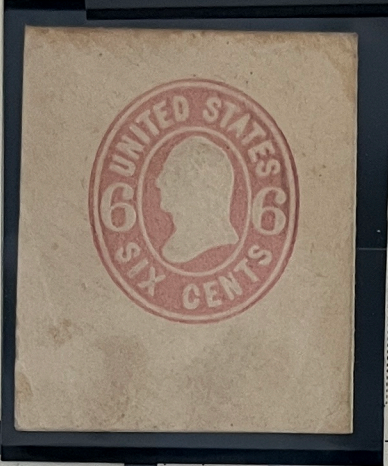
ENVELOPES

1861

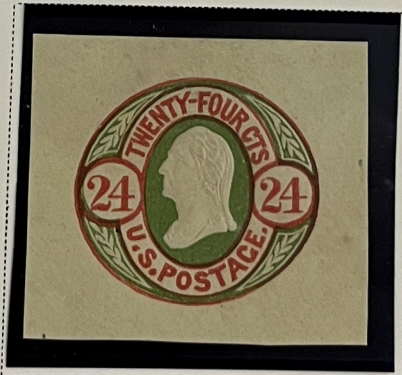


3 C
PINK
ON ORANGE

(U37)



(U41)



1863-64



Die 1
2 C
BLACK ON
DARK MANILA

(W47)



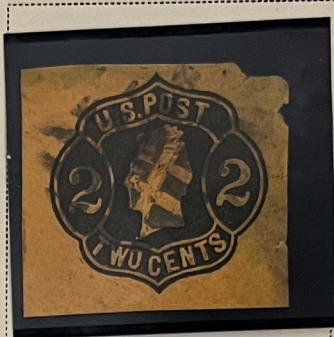
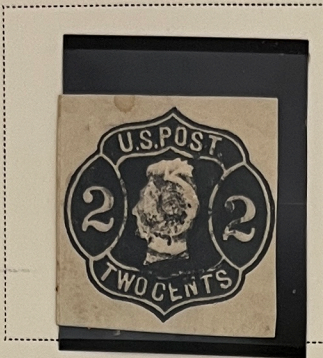
(U45)

Die 2
2 C
BLACK
ON ORANGE

(U49)

ENVELOPES

1863-64



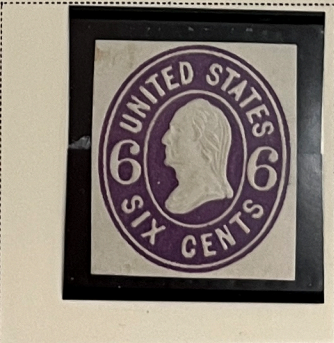
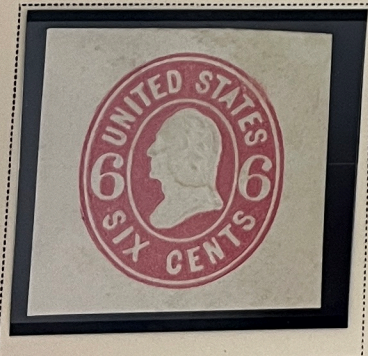
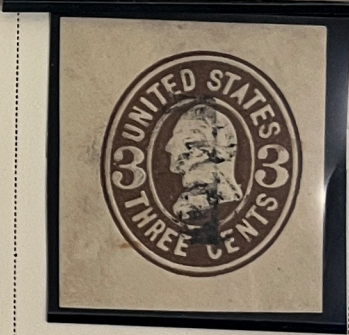
Die 4

2 C
BLACK
ON BUFF

(W66)

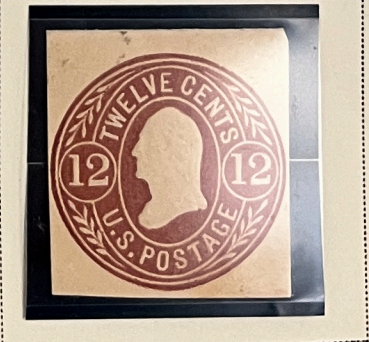


1864-65



9 C
ORANGE
ON BUFF

(U67)

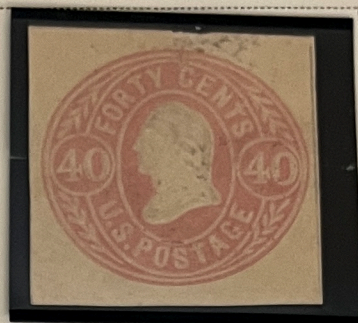
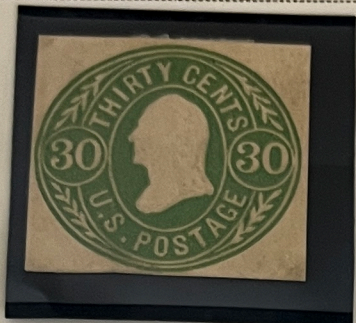
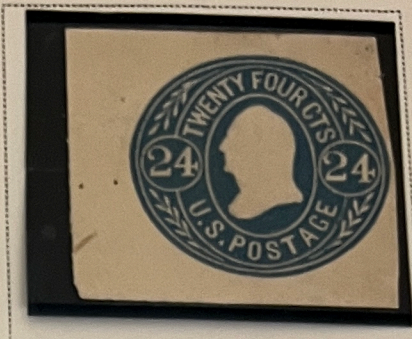
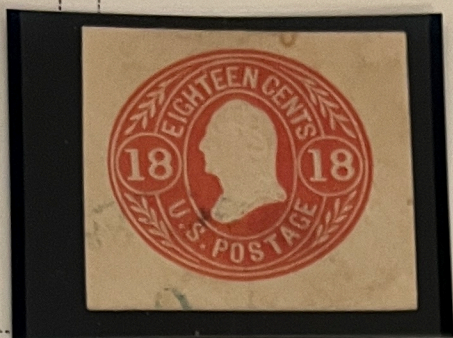


ENVELOPES

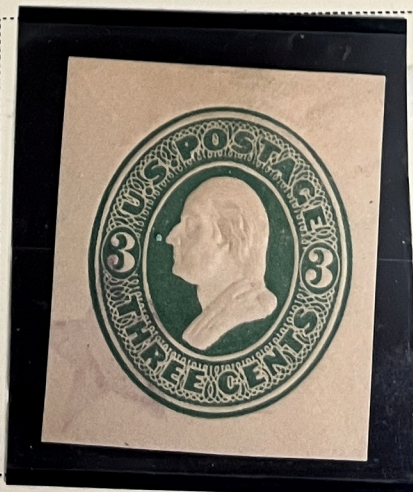
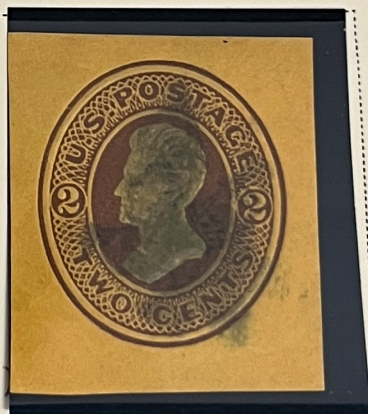
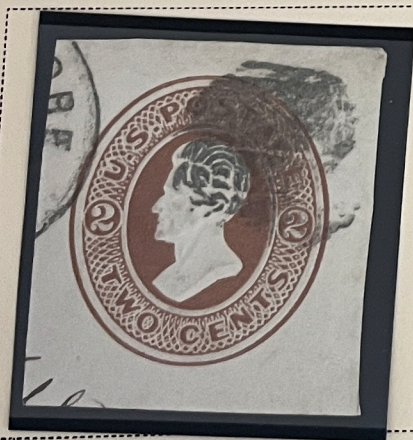
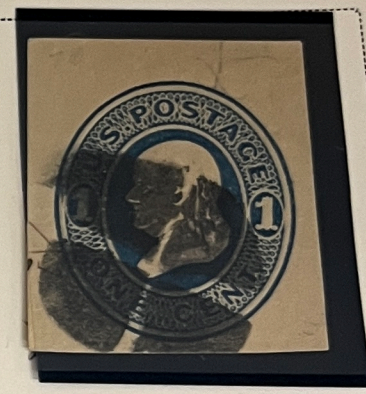
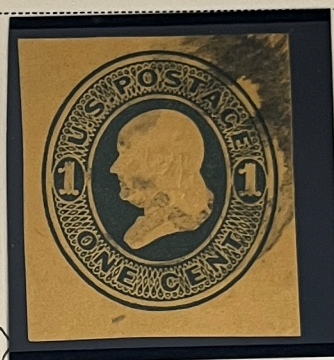
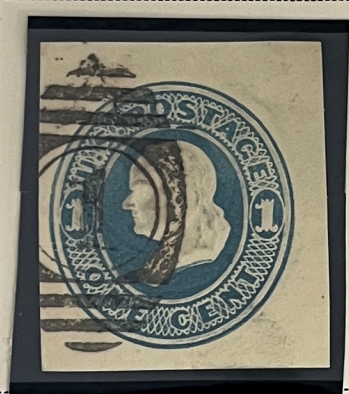
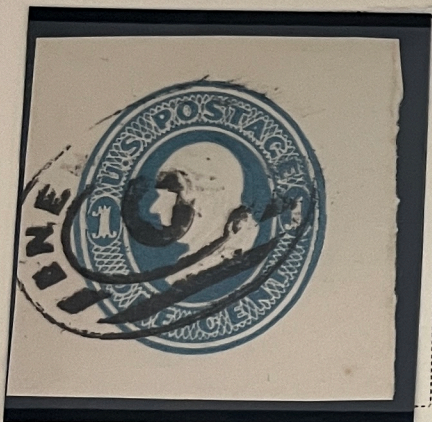
1865

Same
12 C
RED BROWN
ON BUFF

(U69)

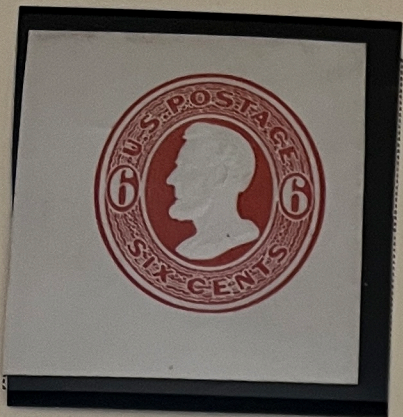


1870-71



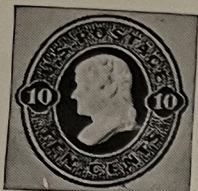
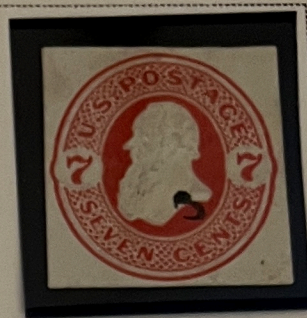
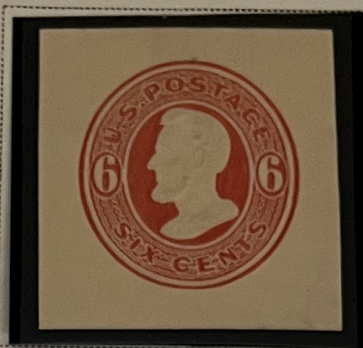
ENVELOPES

1870-71



6 C
DARK RED
ON AMBER

(U86)

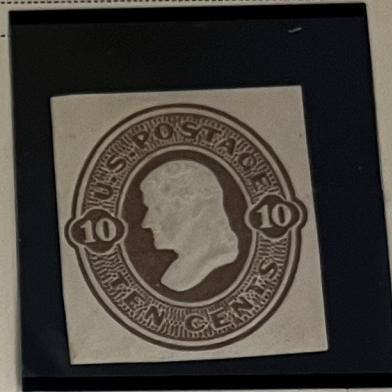


10 C
OLIVE BLACK
ON AMBER

(U89)

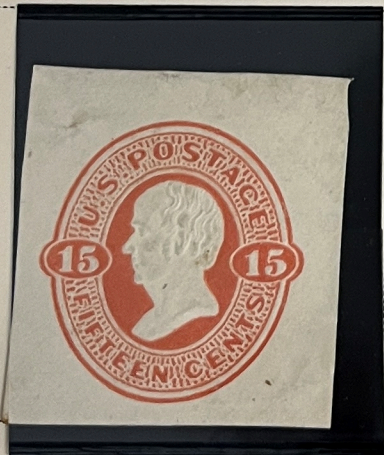
10 C
BROWN
ON WHITE

(U91)



12 C
PLUM
ON CREAM

(U95)

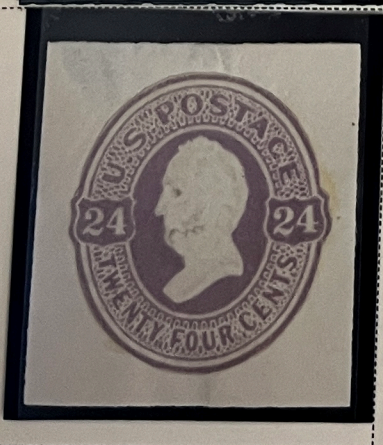


15 C
RED ORANGE
ON AMBER

(U97)

15 C
RED ORANGE
ON CREAM

(U98)



24 C
PURPLE
ON AMBER

(U100)

24 C
PURPLE
ON CREAM

(U101)