

BAHAMAS

British colony. Area: (total) about 5400 sq mi; (excluding unimportant islets & rocks) about 4400 sq mi; Pop: 98,489 ('55); Cap: Nassau, on principal island New Providence.
12 pence = 1 shilling; 20 shillings = 1 pound (£).

ISSUES OF 1859-1903

No watermark,

No wmk, rough perf 14-16



1

2

3

4

5 6 7

No wmk, perf 13



8

9

10

Watermark , perf 12½

Watermark , perf 14



11

12

13

14a?

15

16

18

19

Watermark , perf 12½

Watermark , perf 14



18a

24

25

20

21

22

26

Watermark



27

28

29

30

23

31


32

Watermark




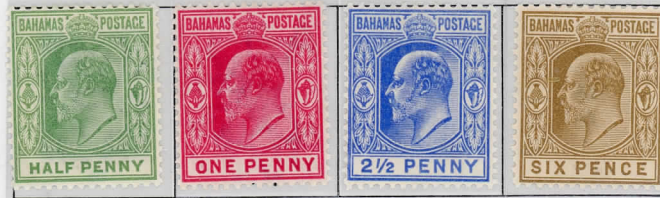
BAHAMAS


ISSUES OF 1902-19

Watermark 




Watermark 



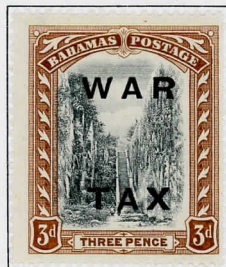
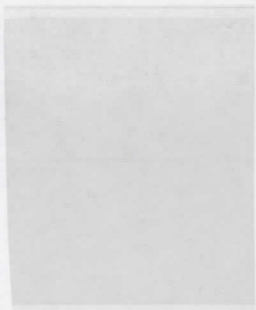
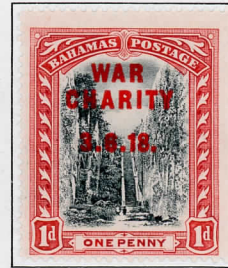
Watermark 



Watermark 




BAHAMAS
ISSUES OF 1916-19




MR56
NH

BAHAMAS
ISSUES OF 1920-37



Watermark 



Watermark 



BAHAMAS

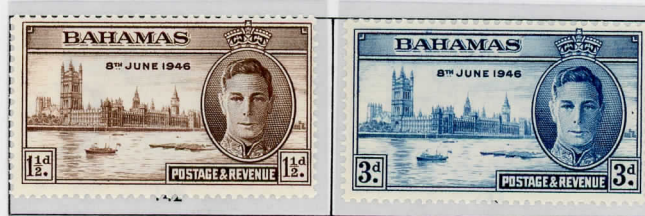
ISSUES OF 1931-52



BAHAMAS
ISSUES OF 1937-48



Scott 129



BAHAMAS

ISSUES OF 1948-49

