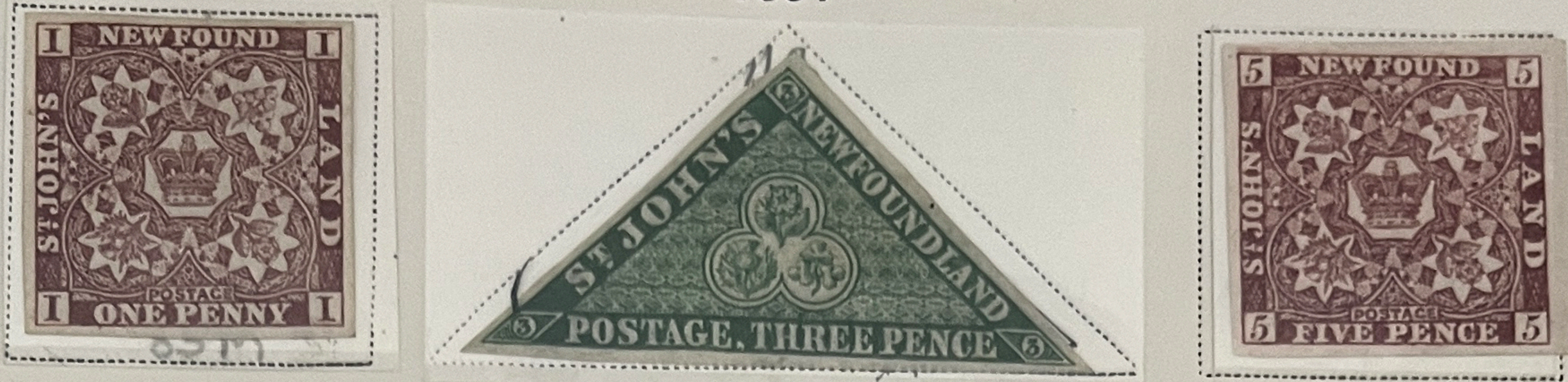


# NEW FOUNDLAND

GOVERNMENT—British colony since 1713. AREA—42,734 square miles. POPULATION—252,836. CAPITAL—St. John's, with 32,292 inhabitants.  
 STANDARD COIN—Same as in Great Britain, and 1 dollar=100 cents.

1857



1860

<p>11</p> <p>Same</p> <p>2 P</p> <p>ORANGE</p> <p>325.00 M</p>	<p>12A</p> <p>5P VIOLET 13 RW</p> <p>100 M 5P</p> <p>ORANGE</p> <p>1000 U.</p>	<p>13</p> <p>6 P</p> <p>ORANGE</p> <p>800 U</p>	<p>SOUVENIR ITEM</p> <p>6½ P</p> <p>ORANGE</p> <p>PROOF</p> <p>10,500?</p>	<p>HURZ OR VERT LAID PAPERS</p> <p>ORANGE</p> <p>PROOF</p> <p>10,500 THE PR.?</p>	<p>15</p> <p>Same</p> <p>Laid Paper</p> <p>1 S</p> <p>ORANGE</p> <p>10,000 U.</p>
--	--	---	--	---	---

1862



1863



1866-73



# NEW FOUNDLAND

1866-73



37 1876-79



41 1880



1887



1890-94



NEW FOUNDLAND

1896



1897



1897



1897

1898-99



# NEWFOUNDLAND

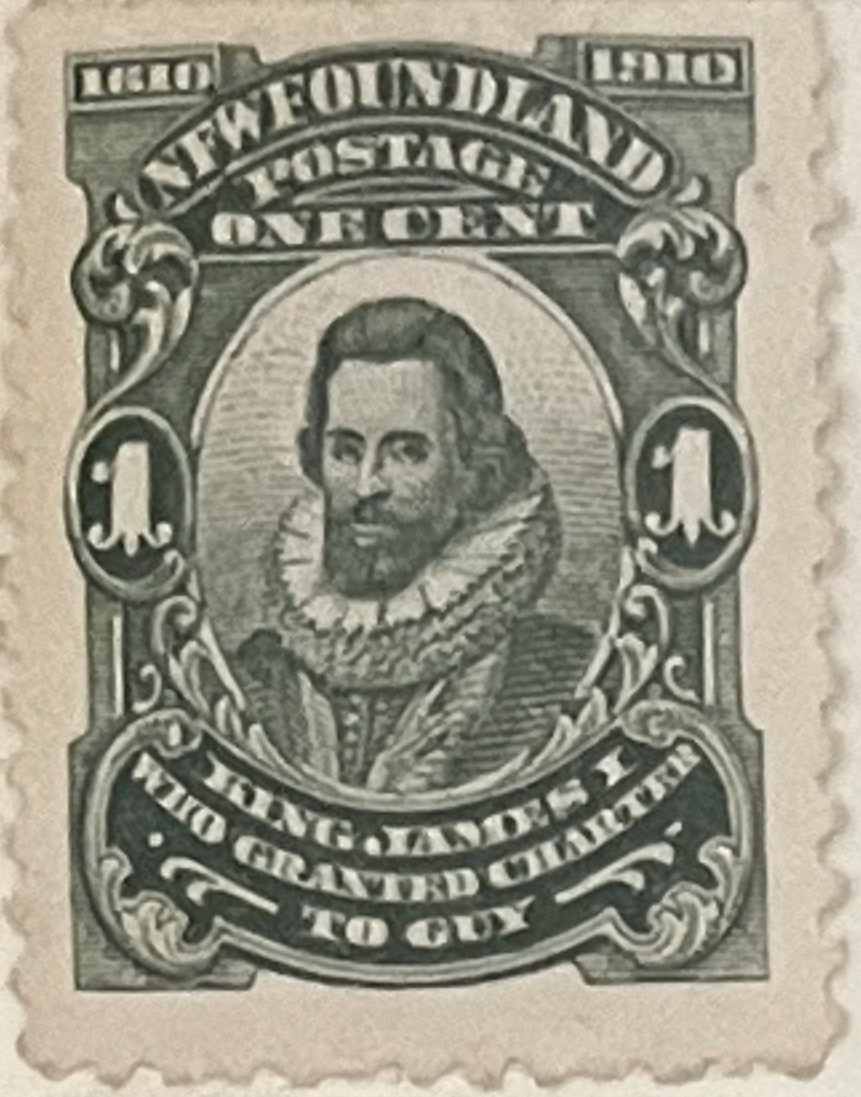
Unwatermarked

ERROR  
NEW FOR NEW

ERROR  
LINE THRU 'FOU'  
OPEN 'O' IN '1910'

1901

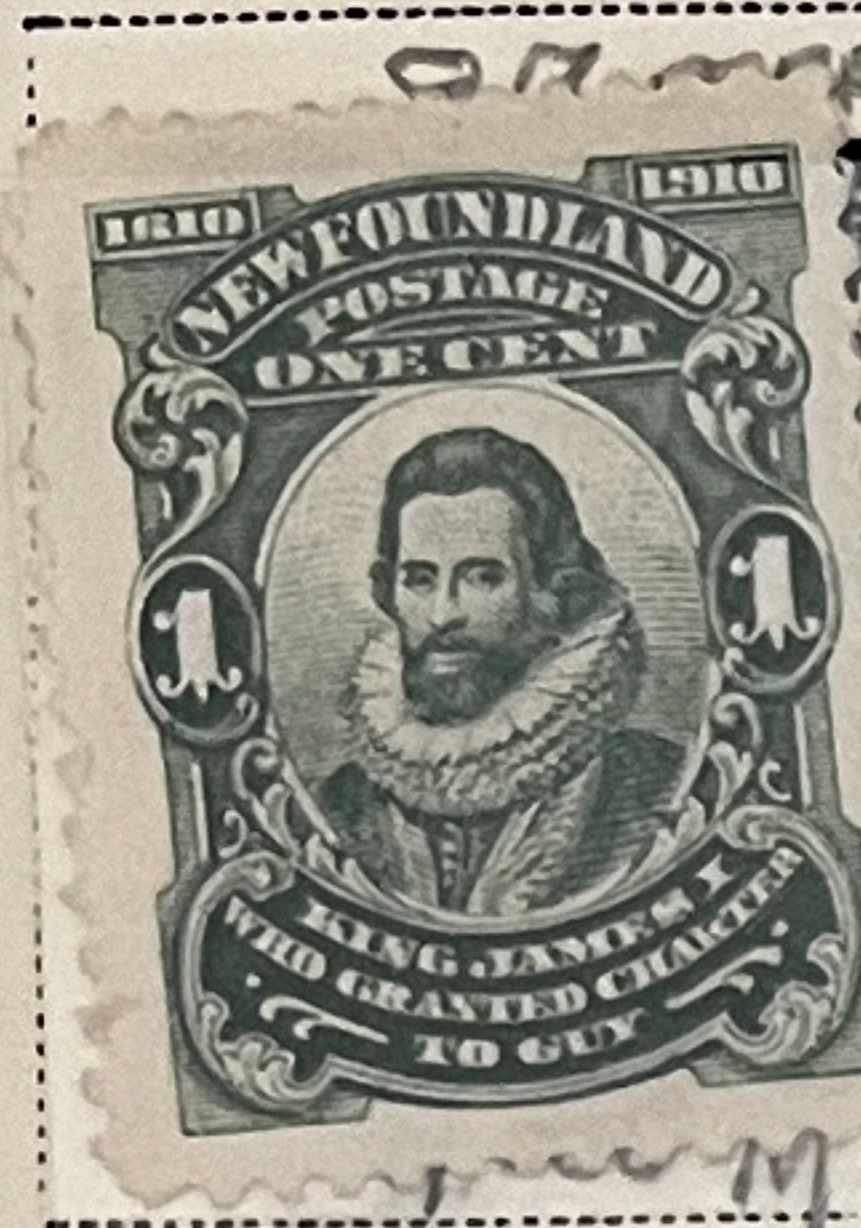
1908



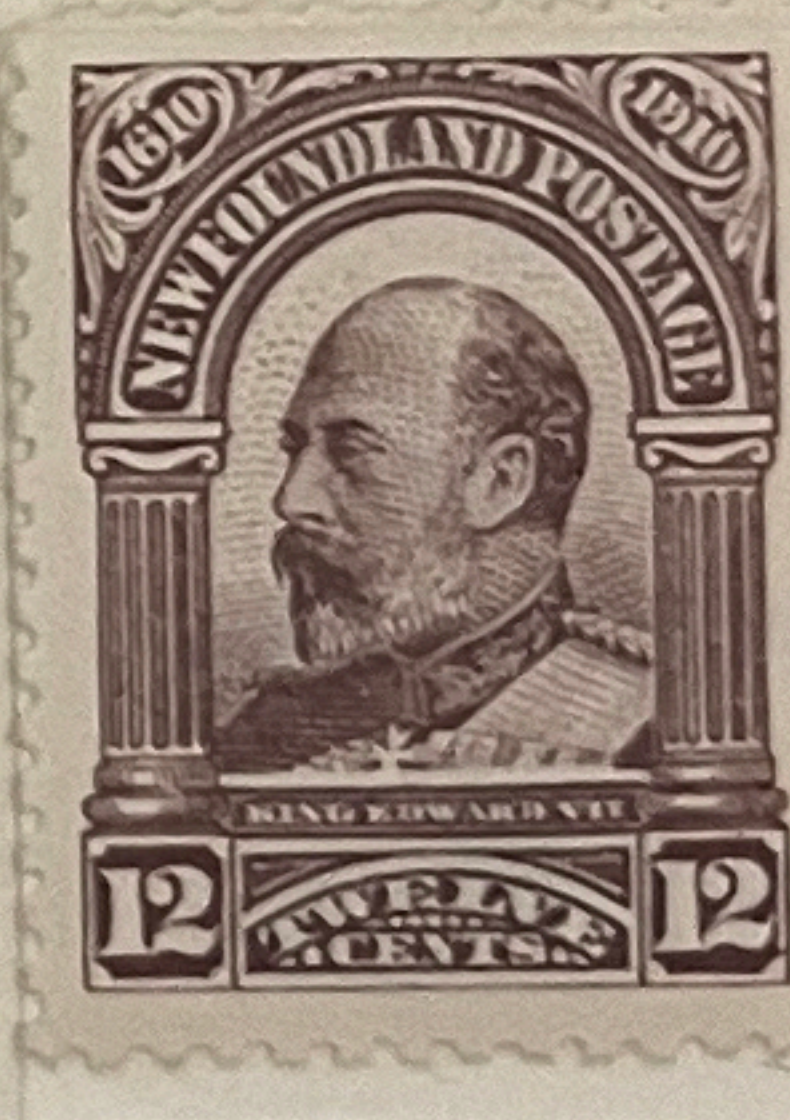
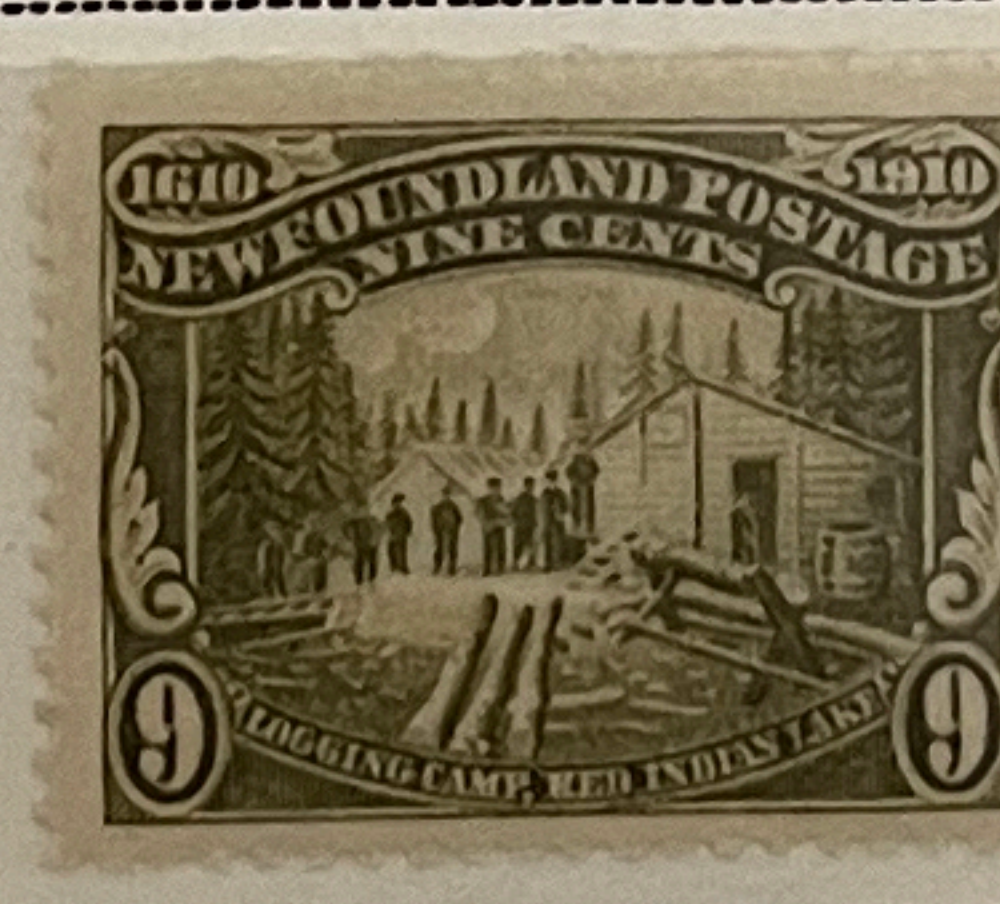
87 50.00 M

87 VALUE ?

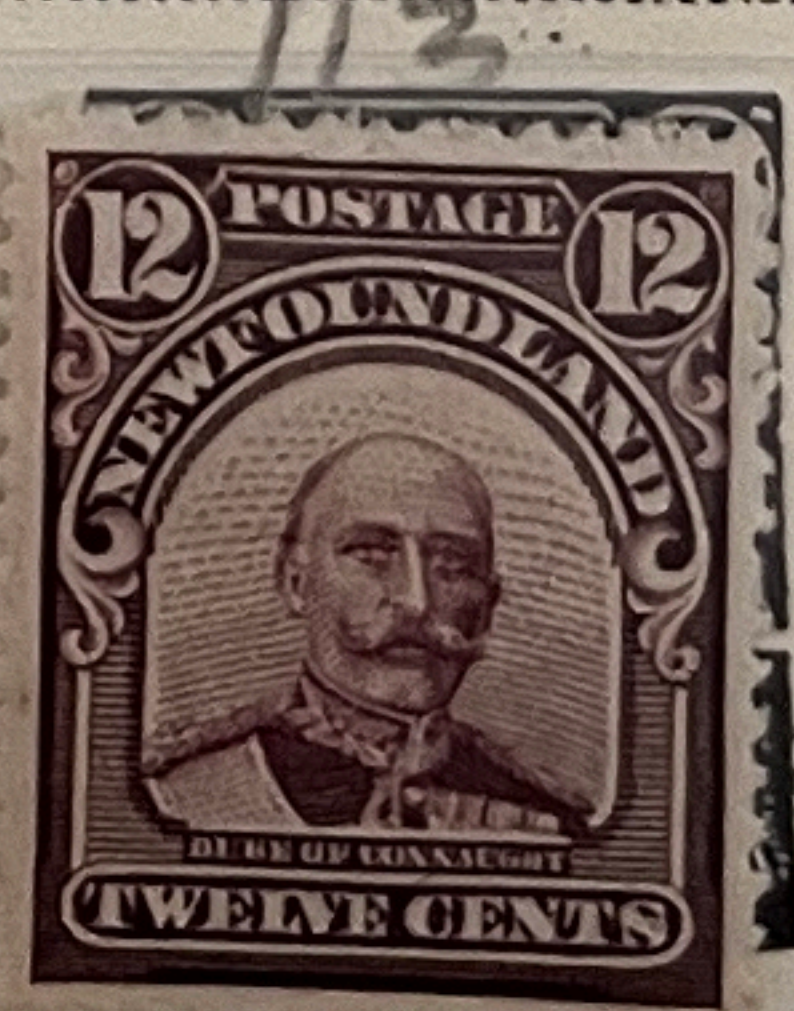
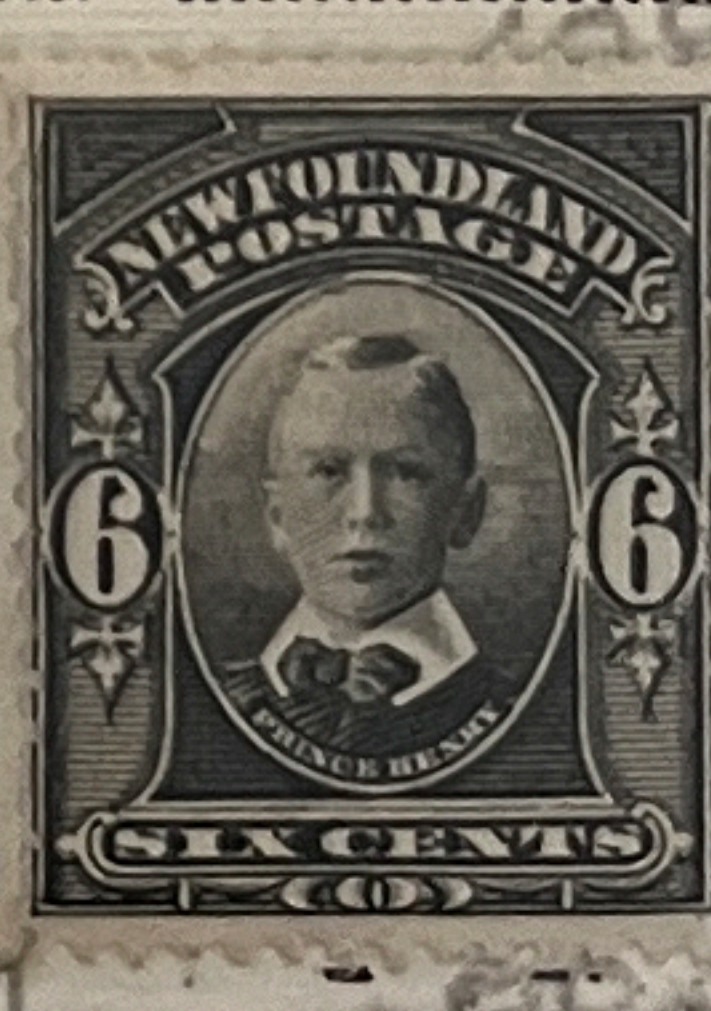
1910



1911



1911



65-

A Vintage Reproduction Page 20th Century 1901 - 1920

# NEWFOUNDLAND

Unwatermarked

1920



1923-24

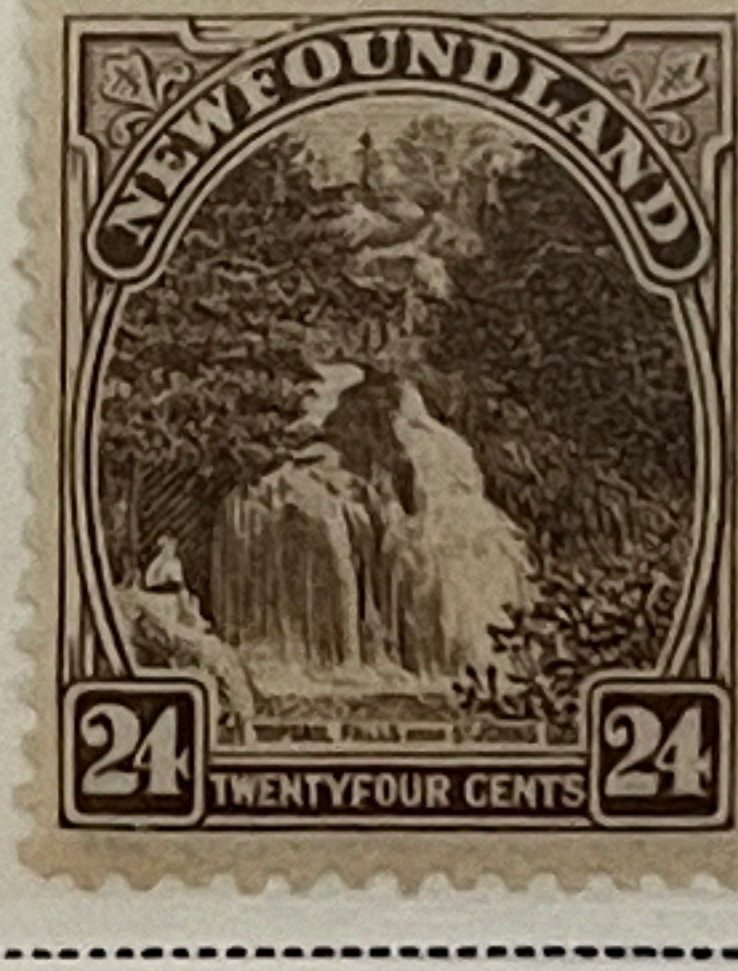


132

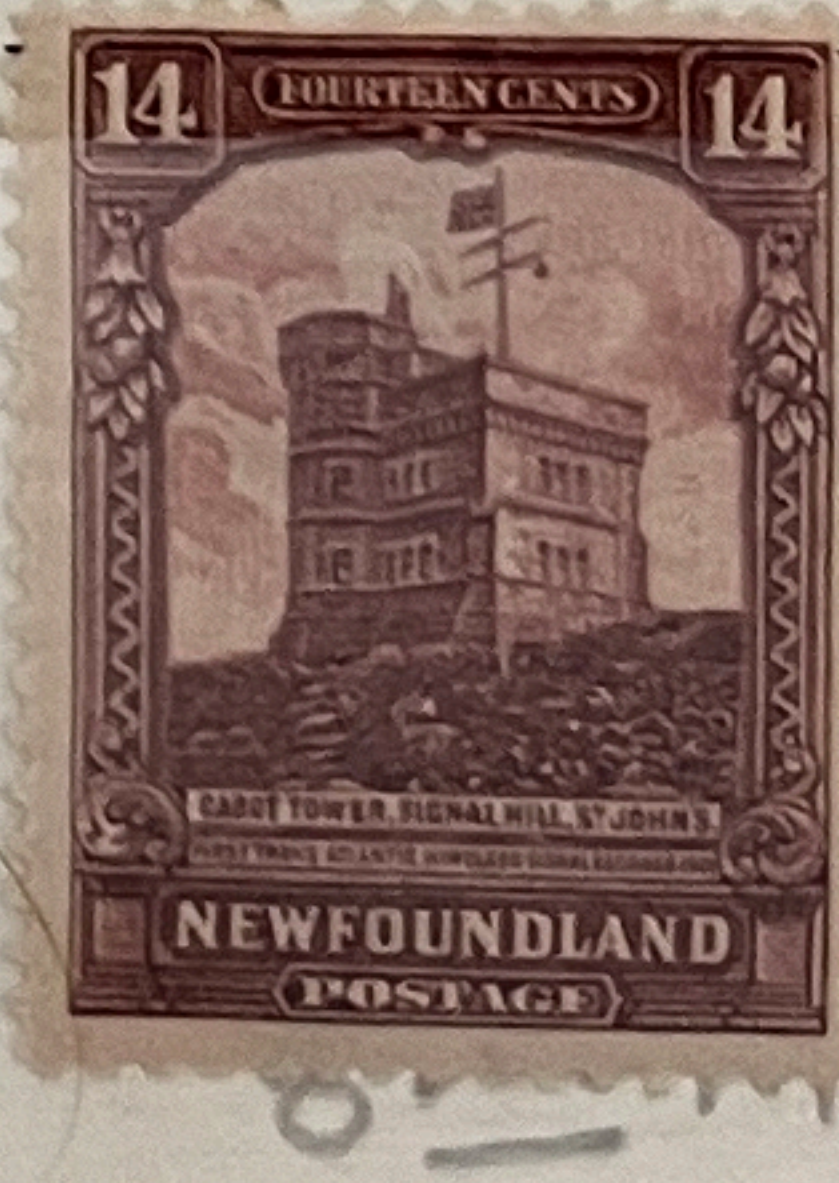
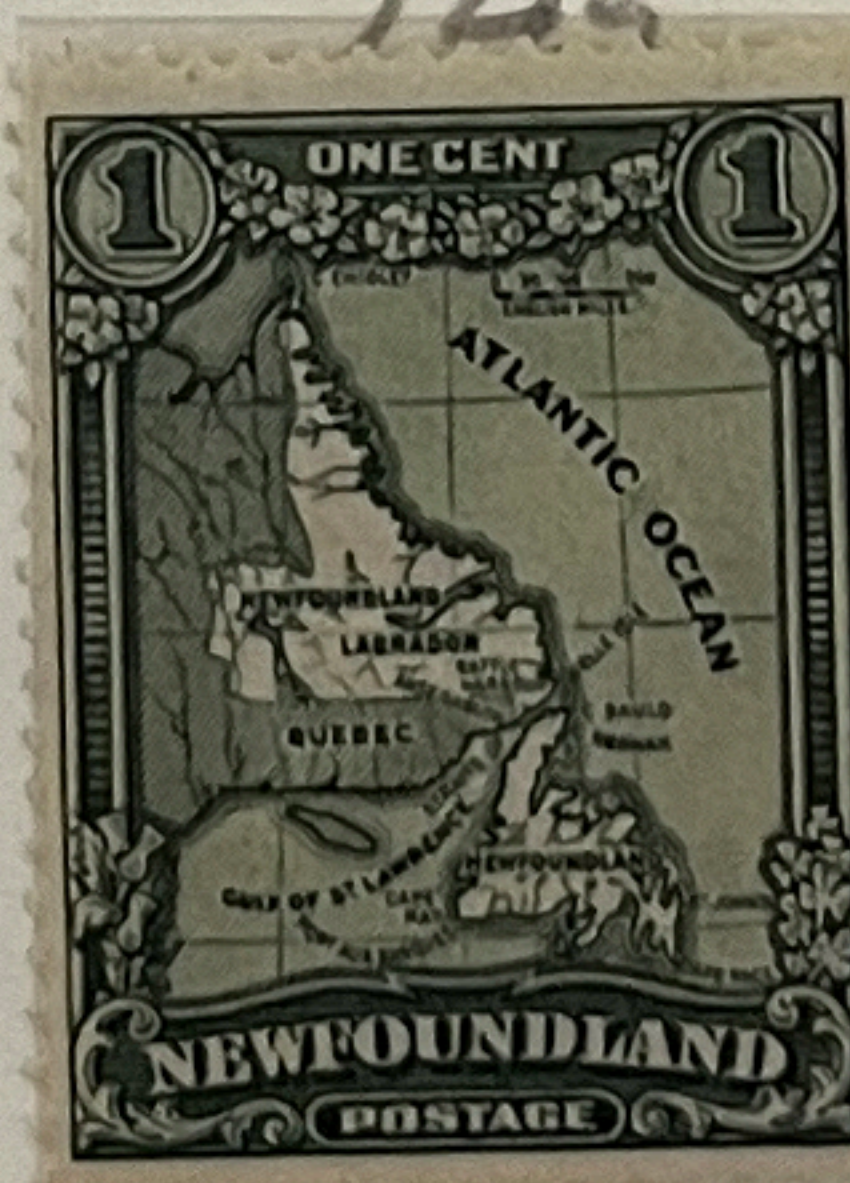
132a

CARMINE

LILAC ROSE



1928



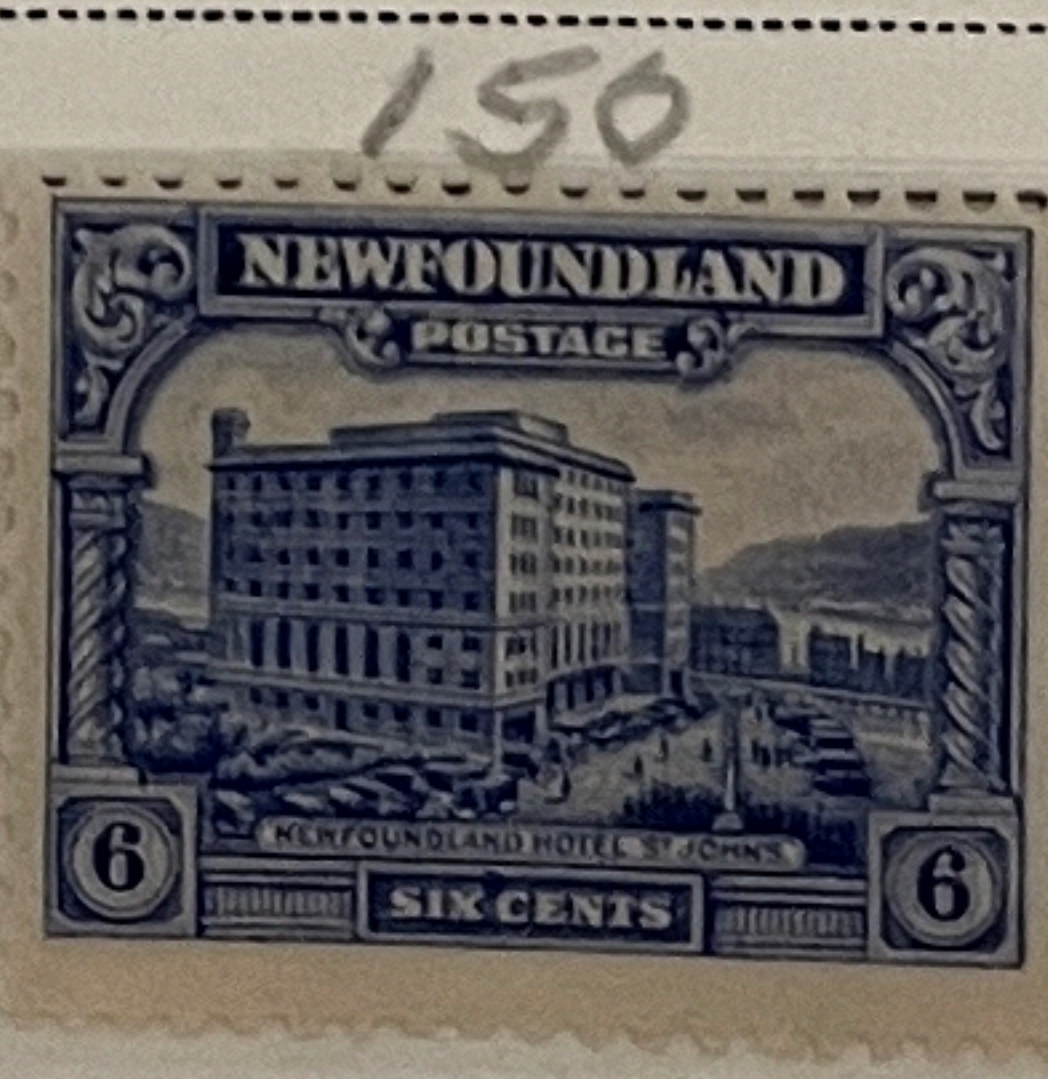
146



147



149



150



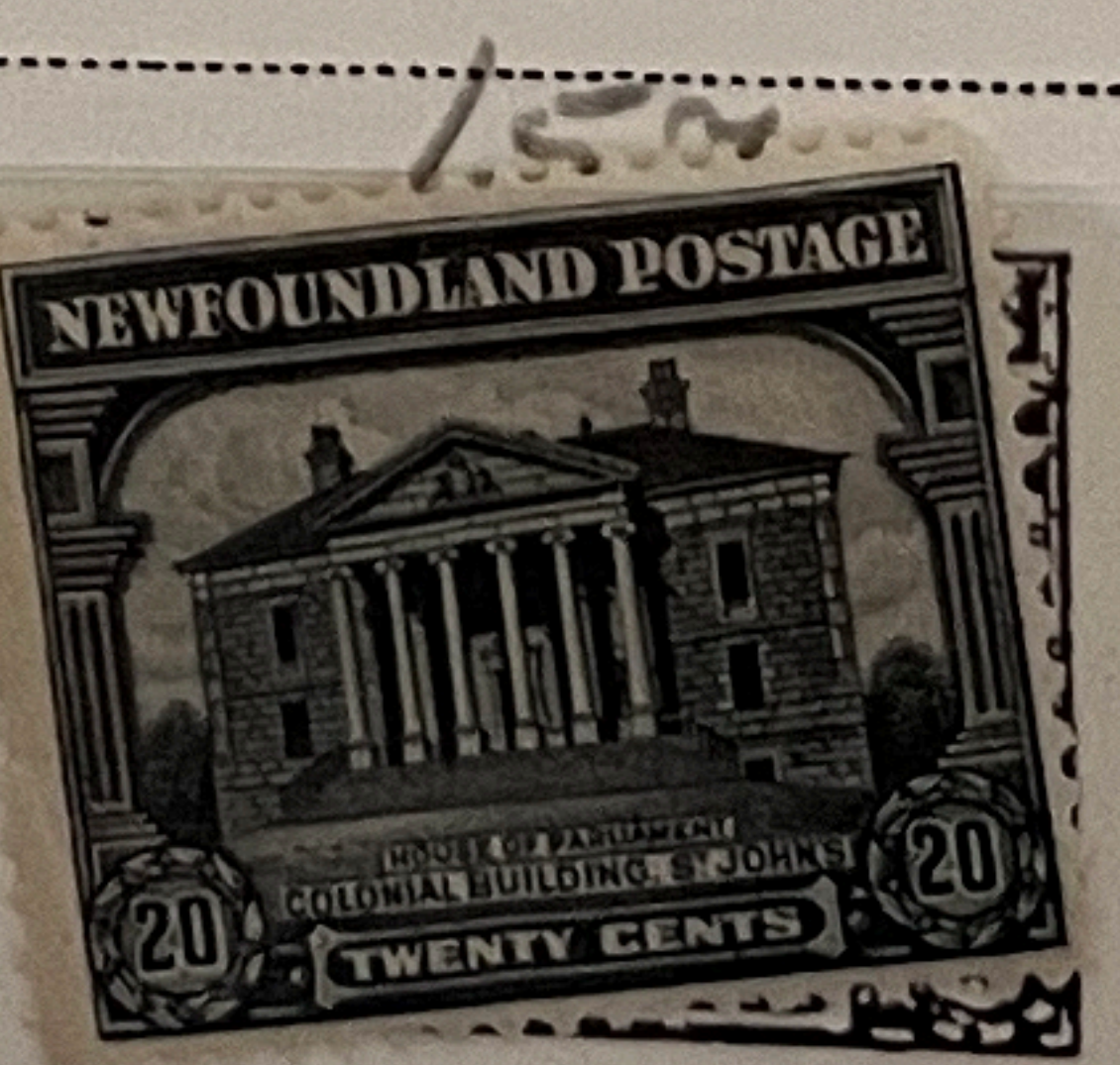
151



153



156



157



158



# NEWFOUNDLAND

AIR POST STAMPS  
Watermarked Coat of Arms

1933

