

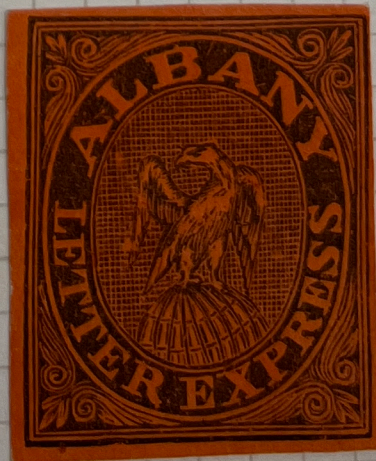
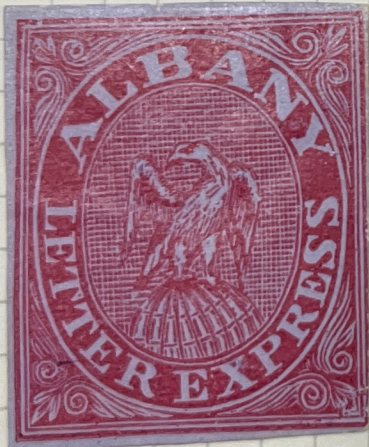


LILLIPUT
ALBUM

ALBANY

Capital of New York State.

S. Allan Taylor's bogus issue, using the Zoyd's City Express eagle and Pomeroy's Letter Express frame.





Lathrop's Bank Express.

(i) Printed in black on coloured paper.



(ii) Printed in black on surface coloured paper.



BARKER'S CITY POST

Genuine local post in Boston for which stamps were never issued by its proprietor.

S. Allen Taylor used the name for one of his bogus issues.



BRADWAY'S
DISPATCH

Bogus S. Allan Taylor issues, using the name of the Millville local post in New Jersey.

Type 1 - narrow figures.

White paper.



Coloured papers.



Coloured through



Defective "A"



Comma in right panel

Wave paper



Laid paper

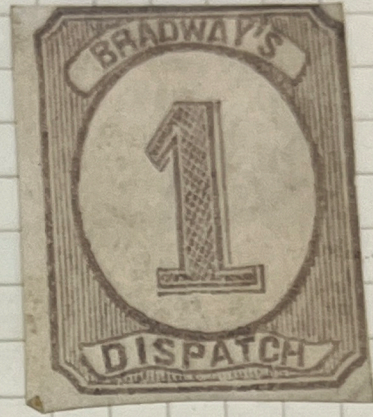


2 white spots at right.



Type 2. - wider figures.

White paper.

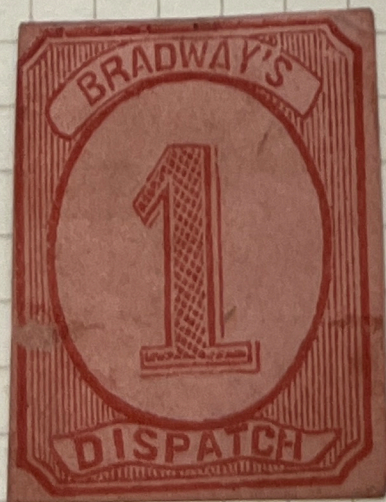


?
changing

Surface coloured paper.



Coloured through paper



GUNN'S Despatch

3000 S. Allen Taylor issue.

1864.

Wave



Coloured
through

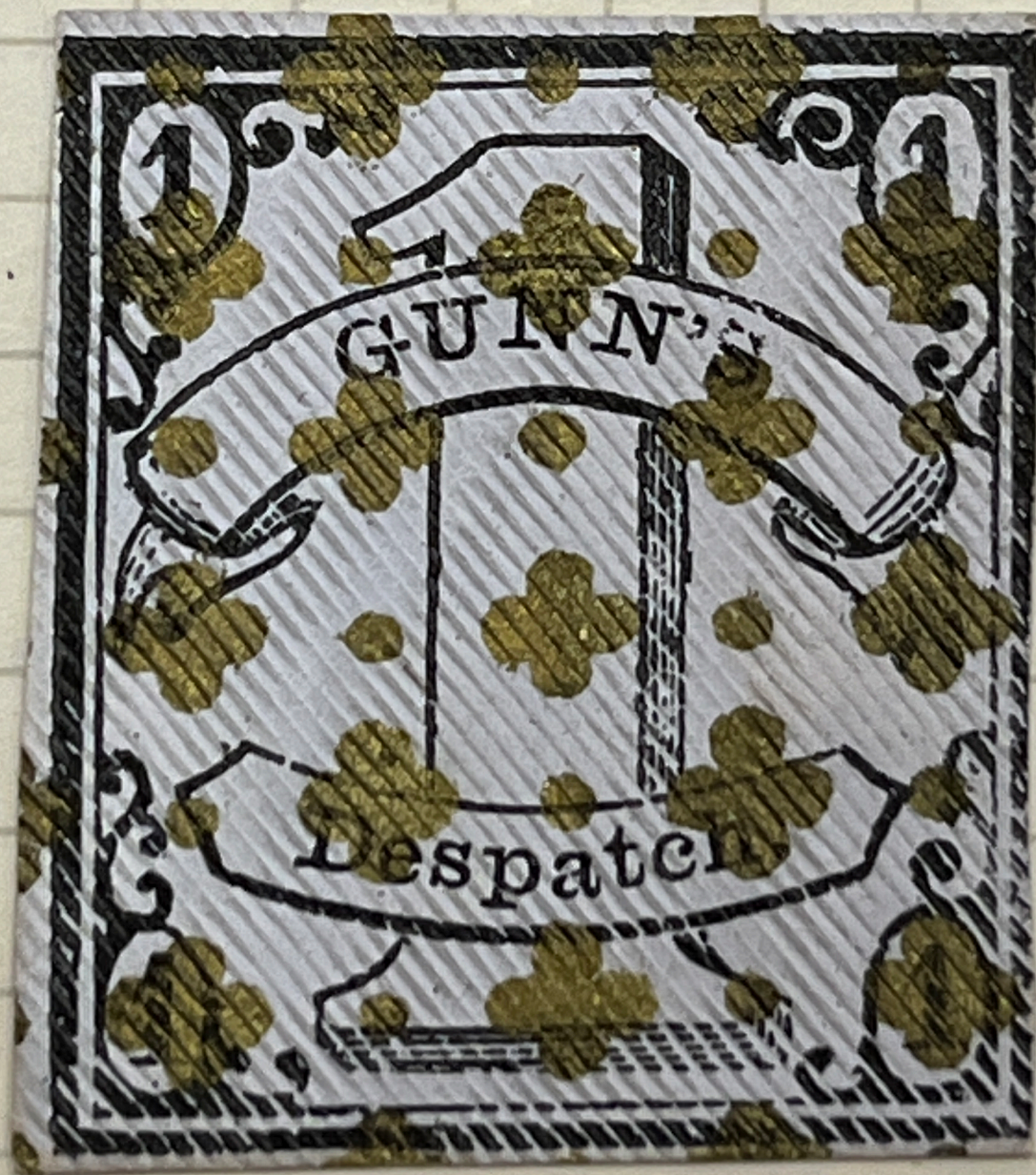


The frame of this design was used again for the Kingman's
City Pool issue.

Moire paper



design was used again for





GUNN'S

Despatch.

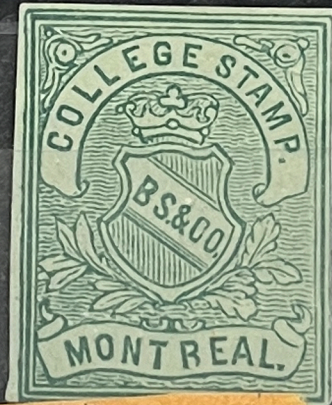
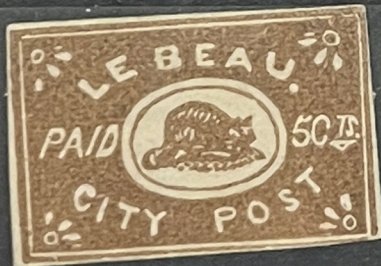
1

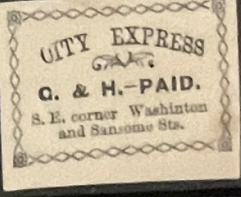
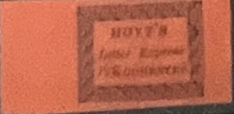
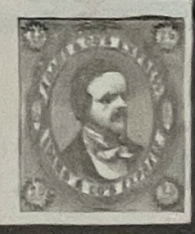
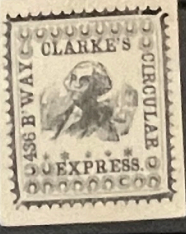
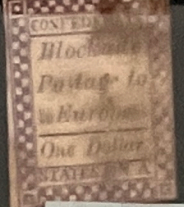
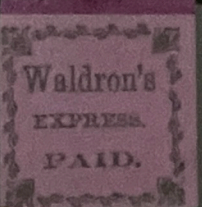
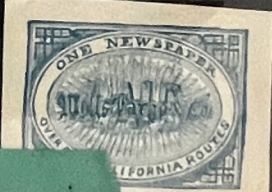
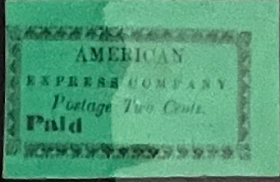
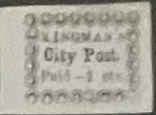
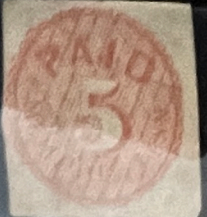
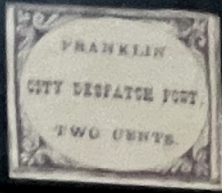
1

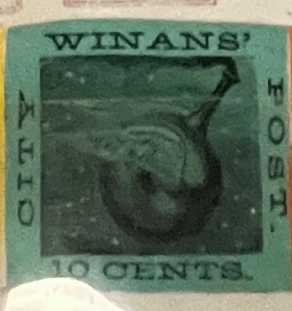
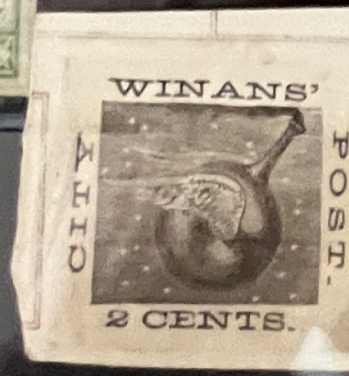
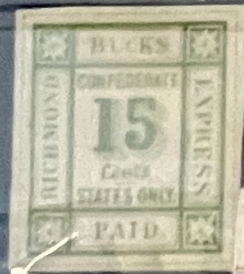
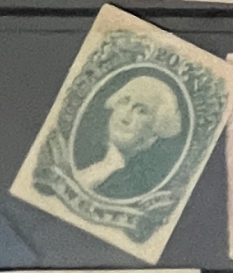
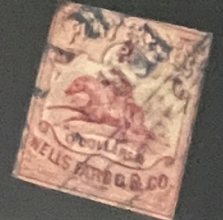
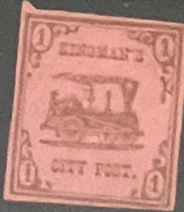
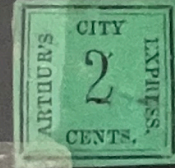
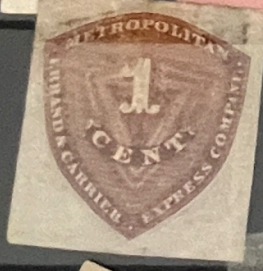
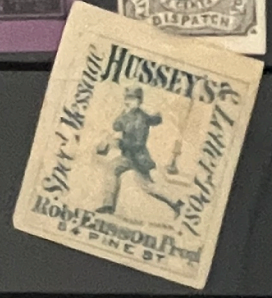
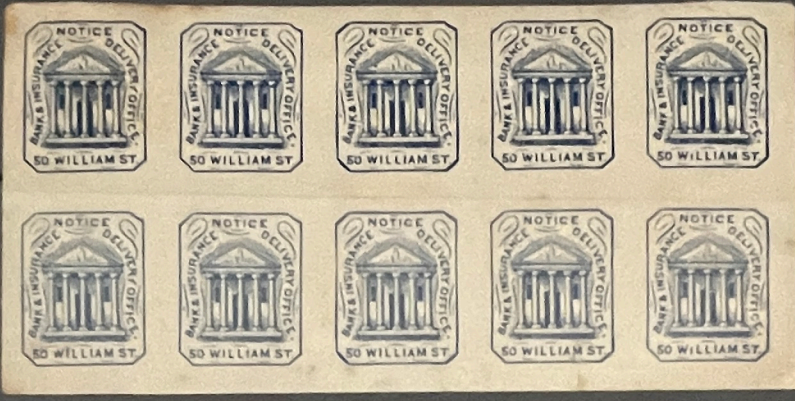
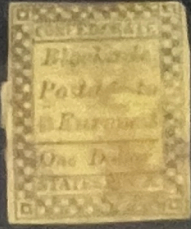
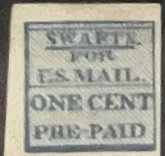
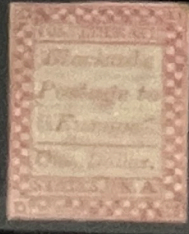
1

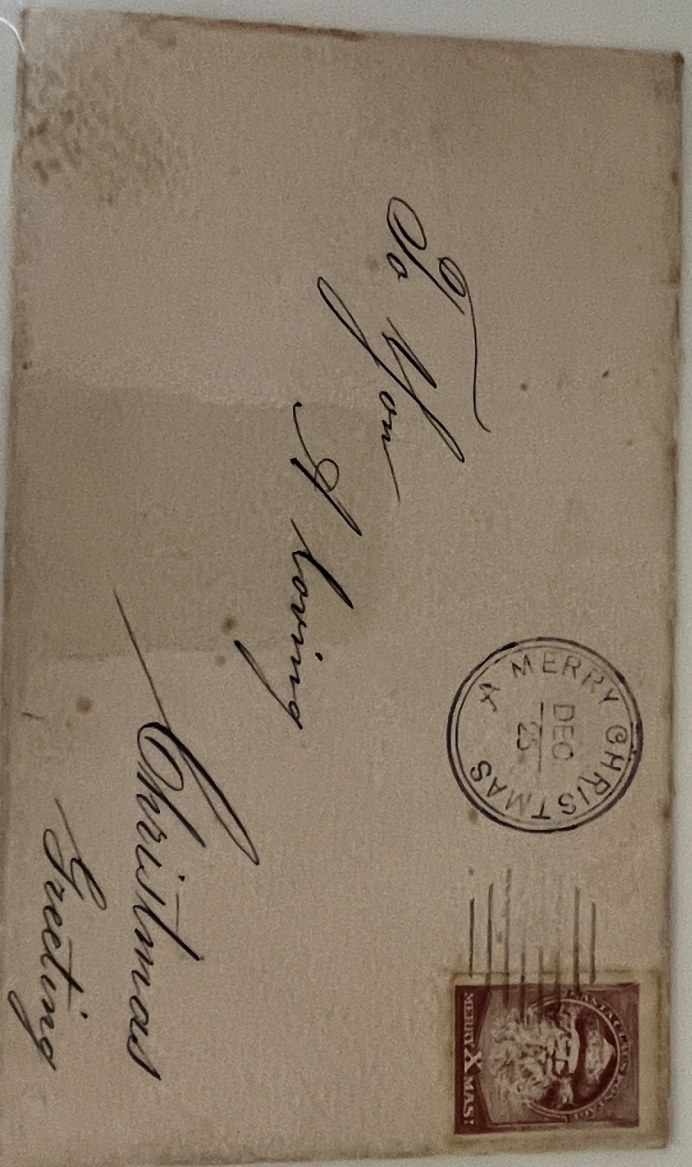
1

For One Newspaper Only.
**GRAND TRUNK
RAILWAY.**
No. _____
To be called for by Con-
signee at the Station on
the G. Trunk Railway to
which it is addressed.









"Santa Claus Postage" and "St. Valentine Postage" stamps were used during the 1880-1890's on Greeting Cards sold in stationery shops.

PHANTOMS OF PHILATELY



