

NORTH WEST PACIFIC ISLANDS

LOCATION — Group of islands in the West Pacific Ocean including a part of New Guinea and adjacent islands of the Bismarck Archipelago

GOVT. — Australian military government

AREA — 96,160 sq. mi.

POP. — 636,563

Stamps of Australia were overprinted for use in the former German possessions of Nauru and German New Guinea which Australian troops had

captured. Following the League of Nations' decision which placed these territories under mandate to Australia, these provisional issues were discontinued. See German New Guinea, New Britain, Nauru and New Guinea.

AUSTRALIA / New Guinea NEW GUINEA

Stamps of Germany and later of GERMAN NEW GUINEA were used in New Guinea from 1888 until 1914.

During the interim period between the "G.R.I." surcharges and the "N.W. PACIFIC ISLANDS" overprints, stamps of AUSTRALIA perforated "OS" were utilised.

DESIGN A1

Die I — The inside frameline has a break at left, even with the top of the letters of the denomination.

Die II — The frameline does not show a break.

Die IV — As Die III, with a break in the top outside frameline above the "ST" of "AUSTRALIA." The upper right inside frameline has an incomplete corner.

Dies are only indicated when there are more than one for any denomination.

Stamps of Australia overprinted

N. W. PACIFIC ISLANDS.	N. W. PACIFIC ISLANDS.	N. W. PACIFIC ISLANDS.
(a)	(b)	(c)
	(6)	

12 Pence = 1 Shilling
20 Shillings = 1 Pound

1915-16. Stamps of Australia optd in black as T 6 (a), (b) or (c).

(i) T 5a. W 5 of Australia. P 14¼×14 (4 Jan-15 Mar 1915).		
65	½d. green.....	2.75
	a. Bright green.....	3.00
67	1d. pale rose (Die I) (4.1).....	7.00
	a. Dull red.....	7.00
	b. Carmine-red.....	7.00



65
Type
6B



65
a
Type
6-c



67
Type
c



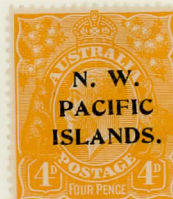
67a
Type
c



67
b
Type
A

70	4d. yellow-orange	4.00
	a. <i>Pale orange-yellow</i>	19.00
	b. <i>Chrome-yellow</i>	£250
72	5d. brown (P 14¼ (line))	2.25
	(ii) T 1. W 2 of Australia. P 12 (4 Jan 1915–March 1916).	
73	2d. grey (Die I)	19.00
74	2½d. indigo (Die II) (4.1.15)	2.75

68-
69
none



70



70a



70
b
1e

71
none



72



73



74

75
none

76	3d. yellow-olive (Die I)	21.00
	c. <i>Greenish olive</i>	£190
78	6d. ultramarine (Die II)	95.00
79	9d. violet (Die II)	48.00
81	1s. green (Die II)	50.00
83	5s. grey and yellow (Die II) (3.16)	£1700
84	10s. grey and pink (Die II) (12.15)	£120



76c

77
none



78



79



81



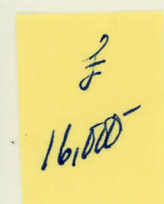
84

(iii) T 1. W 5 of Australia. P 12 (Oct 1915–July 1916).

86	2d. grey (Die I).....	18.00
87	2½d. indigo (Die II) (7.16)	£16000
88	6d. ultramarine (Die II)	10.00
89	9d. violet (Die II) (12.15).....	16.00
90	1s. emerald (Die II) (12.15)	11.00
91	2s. brown (Die II) (12.15)	95.00
92	5s. grey and yellow (Die II) (12.15)....	70.00



86



87



88



89



90



91

(iv) T 1. W 6 of Australia. P 12 (Dec 1915–1916).

94	2d. grey (Die I).....	6.00
96	3d. yellow-olive (Die I)	5.50
	a. Die II.....	85.00
97	2s. brown (Die II) (8.16)	35.00
99	£1 chocolate and dull blue (Die II) (8.16).....	£250

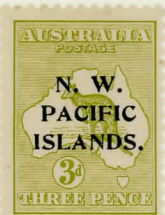


92



94

95
NONE



96



96a



97

One Penny
(10)

N. W.
PACIFIC
ISLANDS.
(11)

1918 (23 May). Nos. 72 and 81 surch locally with T 10.

100	1d. on 5d. brown.....	90.00
101	1d. on 1s. green.....	90.00

Types 6 (a), (b), (c) occur on these stamps also.



100



101

1918-23. Stamps of Australia optd with T 11 ("P" of "PACIFIC" over space between "I" and "S" of "ISLANDS").

(i) **T 5a. W 5** of Australia. P 14¼×14.

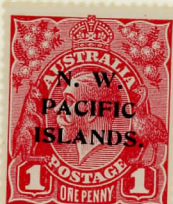
102	½d. green.....	1.50
103	1d. carmine-red (Die I).....	3.75
	b. Die II.....	£110
104	4d. yellow-orange (1919).....	3.25
105	5d. brown (1919).....	3.75



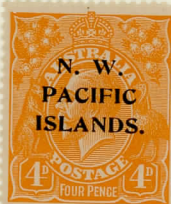
102



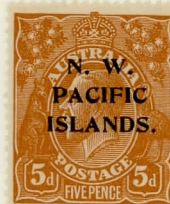
103



103
b



104



105

(ii) **T 1. W 6** of Australia. P 12.

106	2d. grey (Die I) (1919).....	7.00
	a. Die II.....	11.00
107	2½d. indigo (Die II) (1919).....	5.00
	b. Blue (1920).....	8.00
109	3d. greenish olive (Die I) (1919).....	23.00
	a. Die II.....	60.00



106



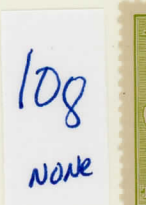
106
a



107



107
b



108
none



109



109
a

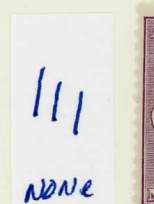
110	6d. ultramarine (Die II) (1919).....	4.50
	a. Greyish ultramarine (1922).....	42.00
112	9d. violet (Die IIB) (1919).....	9.00



110



110a



111
none



112

113	1s. emerald (Die II)	6.50
	<i>a. Pale blue-green</i>	14.00
115	2s. brown (Die II) (1919)	21.00
116	5s. grey and yellow (Die II) (1919).....	60.00
117	10s. grey and bright pink (Die II) (1919).....	£150
118	£1 bistre-brown and grey-blue (Die II) (1922).....	£2750

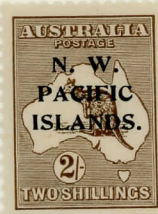


113



113_a

114
none



115



116



117



119

- 119 (iii) **T 5a. W 6a.** of Australia (Mult Crown A). P 14.
1/2d. green (1919)..... 2.75

(iv) **T 5a. W 5** of Australia. *Colour changes and new value.*

120	1d. violet (<i>shades</i>) (1922)	2.00
121	2d. orange (1921)	8.00
122	2d. rose-scarlet (1922)	9.50
123	4d. violet (1922).....	20.00
124	4d. ultramarine (1922)	11.00



120



121



122



123



124



Stamps of Australia Overprinted — a

Type a: "P" of "PACIFIC" above "S" of "ISLANDS."

There are two varieties of the letter "S" in the Type "a" overprint. These occur in three combinations: a, both normal "S"; b, 1st "S" with small head and long bottom stroke, 2nd "S" normal; c, both "S" with small head and long bottom stroke.